

The background of the slide is a repeating pattern of stylized green leaves and branches on a white background. A dark green rectangular box is centered on the slide, containing the main title and subtitle. A smaller, lighter green rectangular box is positioned above the main title.

HUB AND SPOKE FOR KONA

Alternate Locations under Consideration Spring 2020

Kona Service Area: this map and inserts show where today's routes travel



Kona Commercial Area Detail



Location and Features of Hubs

- Should be in a central location, close to business and schools and shops
- One to five acres, with utility connections
- Features can include:
 - > Multiple shelters and benches
 - > Multiple Pull outs for the buses to wait and load
 - > Proper signage and lighting
 - > Places for passengers to be dropped off
 - > Locations for taxi or Uber/Lyft type pick ups
 - > Possibly park and ride spaces (these can be in separate location)
 - > Possibly bathrooms

Summary of Alternative Locations Identified

Site Name	Size	T.M.K.	Zoning	Ownership
SITE 1 Old Airport	14 acres	7-5-005:083	ML-20	State of Hawaii
SITE 2 Back of Kona Commons (near Ross Dress for Less)	865.80 acres	7-4-008:002	A-5a; MCX-20; OPEN;	Lili'uokalani Trust Estate
SITE 3 Back of KTA Super Store	3.98 acres	7-4-015:014	CV-10	Lili'uokalani Trust Estate
SITE 4 Back of West Hawai'i Today building	3.15 acres	7-5-005:089	CV-10	Lanikai Properties LLC Tony Hawai'i Kona LLC - Lessee
SITE 5 Park-and-Ride lot near King Kamehameha Hotel	4.36 acres; 0.48 acres	7-5-005:062; 7-5-005:066	V-.75	HKK Hawai'i LLC Breit Kona Property Owner LLC - Lessee

Alternative Locations Previously Identified

Site Name	Size	T.M.K.	Zoning	Ownership
SITE 6 Between Kuakini Hwy and Likana Ln; across from Olohi Rd	0.30 acres; 0.14 acres; 0.01 acres; 0.28 acres; 0.11 acres; 0.51 acres; 0.08 acres; 0.03 acres	7-5-006:035; 7-5-006:005; 7-5-006:045; 7-5-006:008; 7-5-006:004; 7-5-006:003; 7-5-006:041; 7-5-006:036	V-.75	County of Hawai'i; County of Hawai'i; State of Hawai'i; County of Hawai'i; County of Hawai'i; County of Hawai'i; County of Hawai'i; State of Hawai'i
SITE 7 Within proposed Niumalu Marketplace development	19.55 acres	7-5-004:007	CG-20	Kona Owner LLC
SITE 8 Across from Niumalu Marketplace development; east of Henry St	4.06 acres	7-5-004:006	CG-20	Circadia Management LLC
SITE 9 (Former) K Mart	11.35 acres	7-4-020:011	CG-10	Lili'uokalani Trust Estate Troy Cmbs Property LLC - Lessee
SITE 10 Makalapua Project	865.8 acres; 14.76 acres; 1.19 acres; 1.45 acres; 1.54 acres; 3.32 acres	7-4-008:002; 7-4-025:015; 7-4-025:021; 7-4-025:005; 7-4-025:002; 7-4-025:001	A-5a, MCX-20, OPEN; MCX-20 (rest of parcels)	Lili'uokalani Trust Estate; Queen Lili'uokalani Trust; Queen Lili'uokalani Trust; Queen Lili'uokalani Trust; Queen Lili'uokalani Trust; Queen Lili'uokalani Trust
SITE 11 New road connector for sub-division at Keahole near Huggo's	1.172 acres; 4.31 acres; 0.18 acres	7-5-009:023; 7-5-009:021; 7-5-009:022	V-.75; RM-1; RM-1	KPC Villages LLC; B P Bishop Trust Estate JYZ Partners – Lessee; Cascavilla Land Equities LLC

Site 1- Old Airport

Owned by State of
Hawaii



Site 2 – Back of Kona Commons

Owned by Liliuokalani
Estate Trust



Site 3 – Back of KTA Super Store

Owned by
Liliuokalani Estate
Trust



Site 4 – Back of West Hawaii Today

Owned by Lanihau
Properties

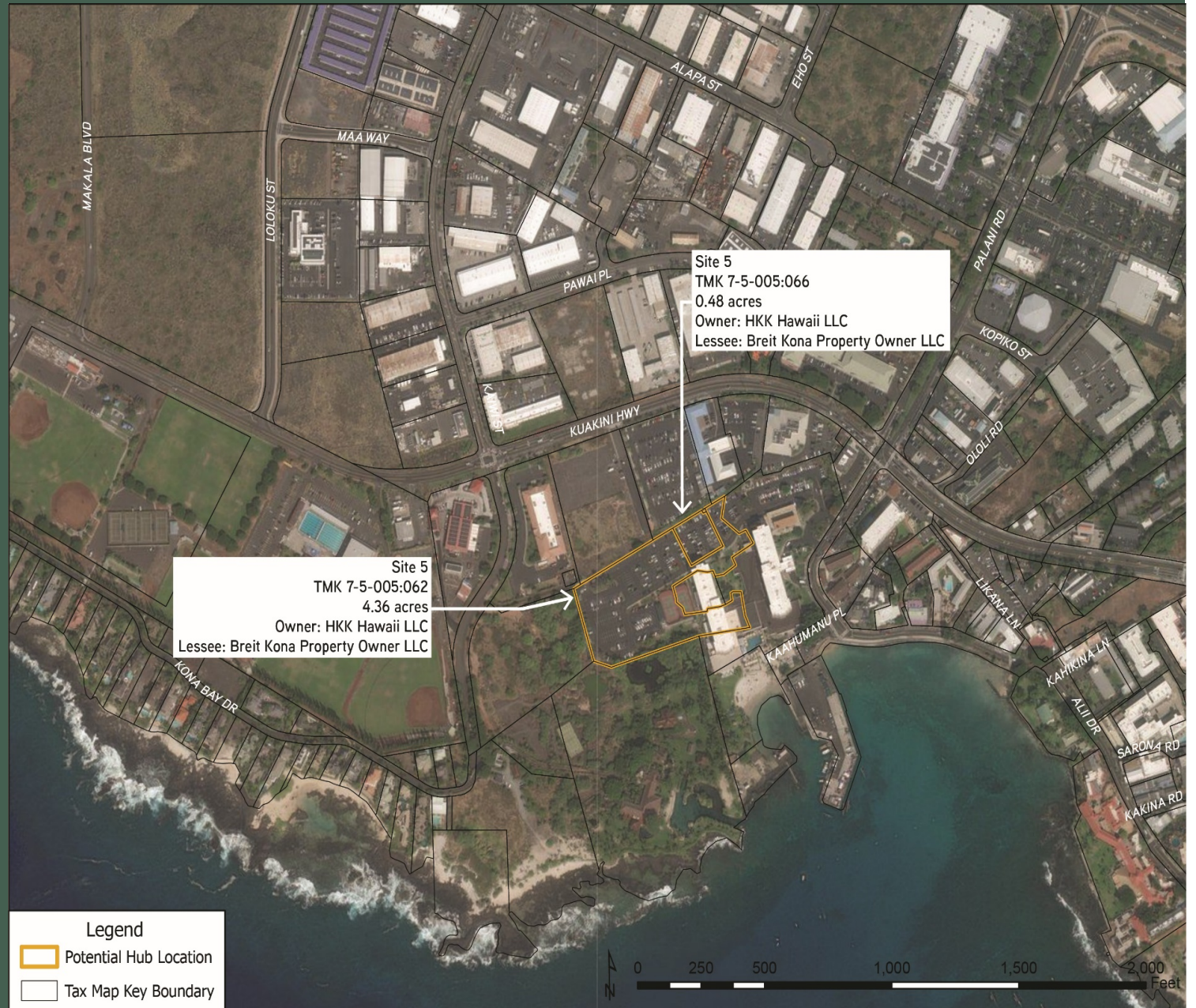
Tony Hawaii Kona LLC
(Lessee)



Site 5 – Park & Ride near Kamehameha Hotel

Owned by HHK Hawaii LLC

Breit Kona Property Owner LLC (Lessee)



Site 6 – Between Kuakini & Likana Lane

Owned by State of
Hawaii and County
of Hawaii



Site 7- Within Proposed Niumalu Mktplace

Owned by Kona
Owner LLC



Site 8 – Across Niumalu Mktplace, east of Henry

Owner Cicadia
Management LLC



Site 9 – Former K Mart

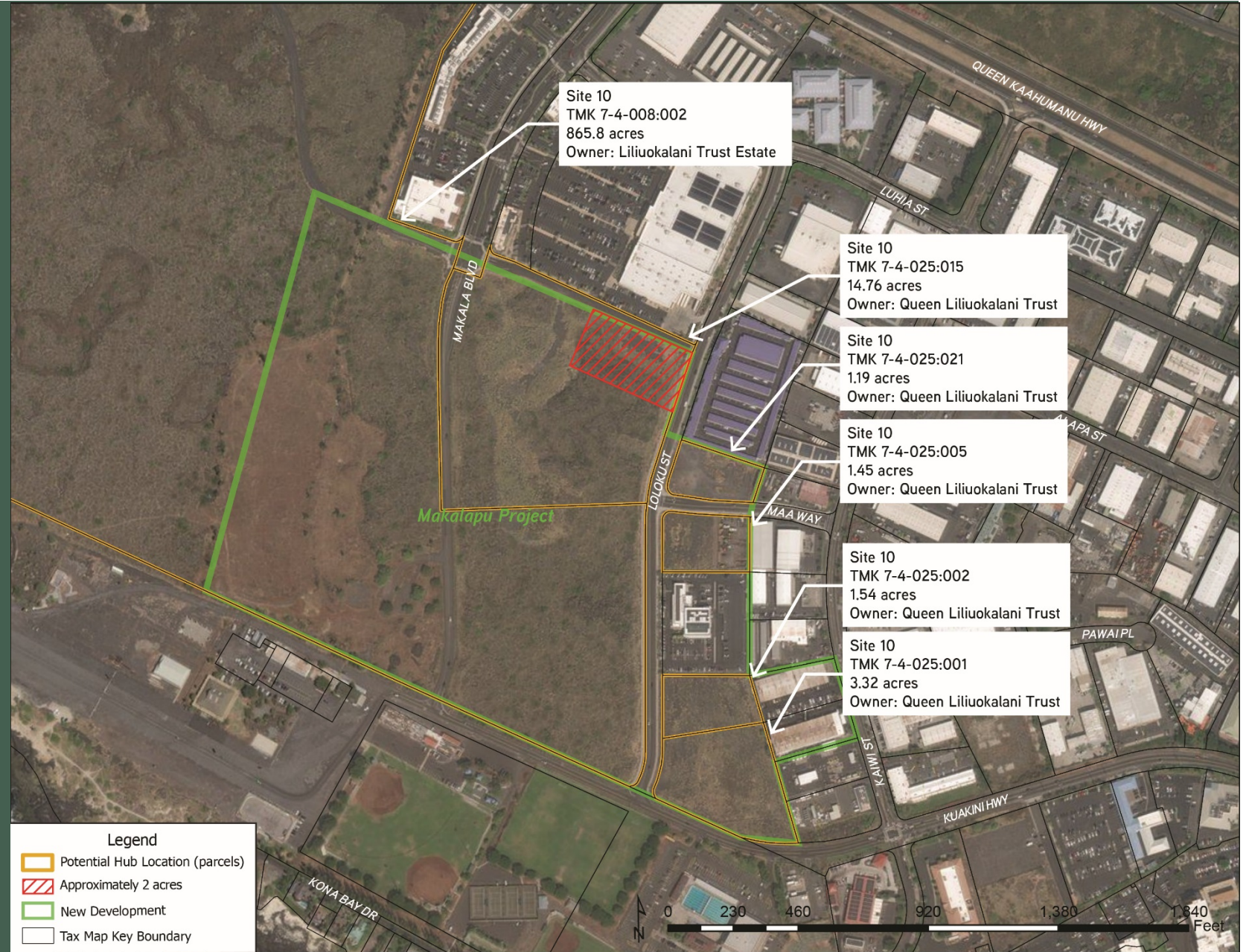
Owner Liliuokalani
Trust Estate

Troy Cmbs Property
LLC (lessee)



Site 10 – Makalapua Project

Owned by
Liliuokalani Estate
Trust



Site 11- New road connector for sub-division at Keahole near Huggo's

Owned by KPC Villages LLC; B P
Bishop Trust Estate; and
Cascavilla Land Equities.

JYZ Partners (Lessee)



What are your thoughts on each of the sites identified?

Go to the feedback tab and tell us.

We are currently seeking community input on **additional** locations to consider

In the feedback tab, share any sites you think might be a good location for the Kona Hub, and we will check them out.

Mahalo for your input

