

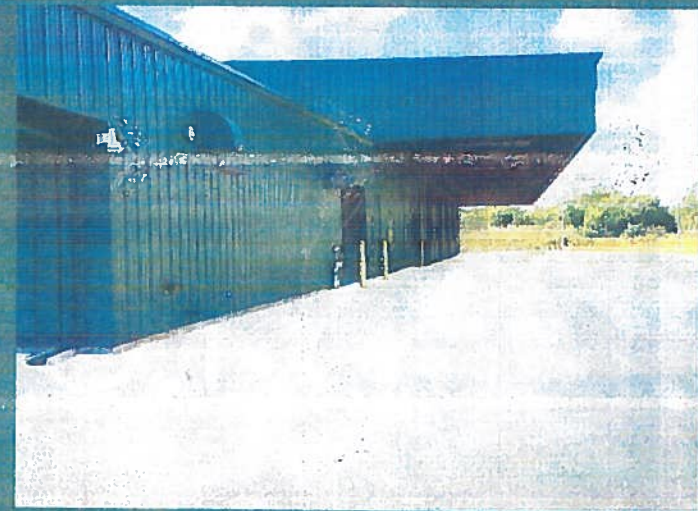


HUB AND SPOKE FOR PUNA

Information Session....July 31, 2019.... Puna Neighborhood Facility

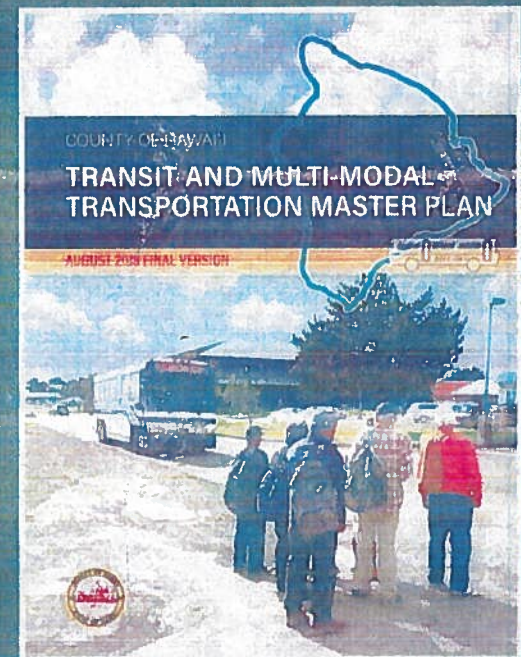
MTA is changing...

- Improving reliability
- Replacing old equipment
- Opened a new maintenance garage
- New Transit Administrator
- Added personnel
- Improving communications
- Improving service options



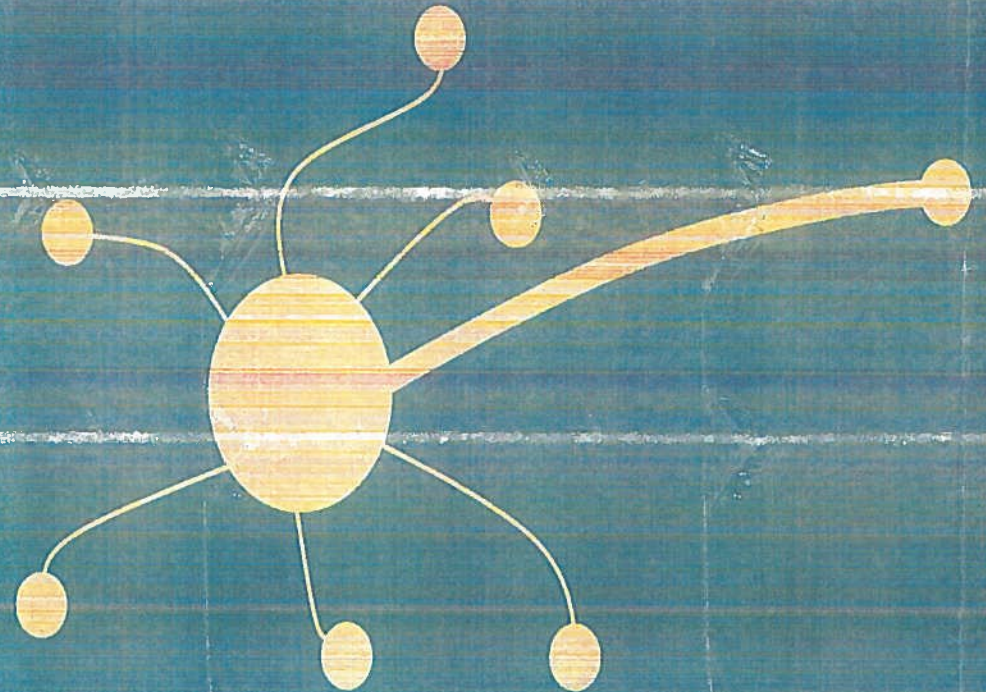
Plan for the future – Transit and Multi-Modal Master Plan

- Visions, Goals, Strategies
- Multi-Modal Program...includes ride sharing, bicycle mode, coordination with roadway programs, alternate fuel vehicles
- Transit Service Recommendations...includes Customer Service, Schedule Adherence, new types of service, and hub and spoke for each district
- Capital Program Recommendations... includes fleet, maintenance, bus stops and hubs, shelters and benches, park and ride, signage
- Capital and Financial Plans



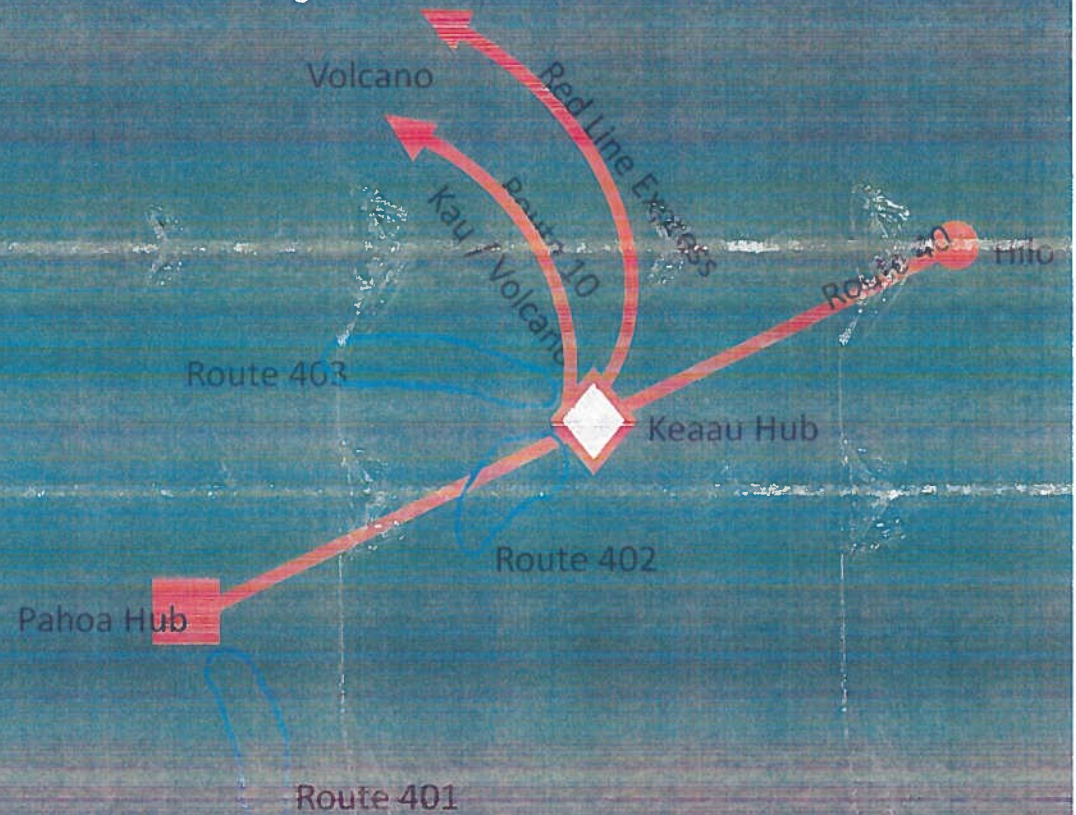
Hub and Spoke – what is it?

- This is a way of routing transportation through a central location, or hub
- Spokes are the routes going in and out of the hub
- By meeting up at the hub, passengers on the shorter routes (using smaller vehicles) can get off and transfer onto the longer routes (which use longer vehicles).
- This makes service more efficient than if the long routes had to stop everywhere.
- The concept has been in use among airlines since 2001.
- In the past ten to fifteen years, transit systems have been converting to hub and spoke.



What would be the major lines for Puna?

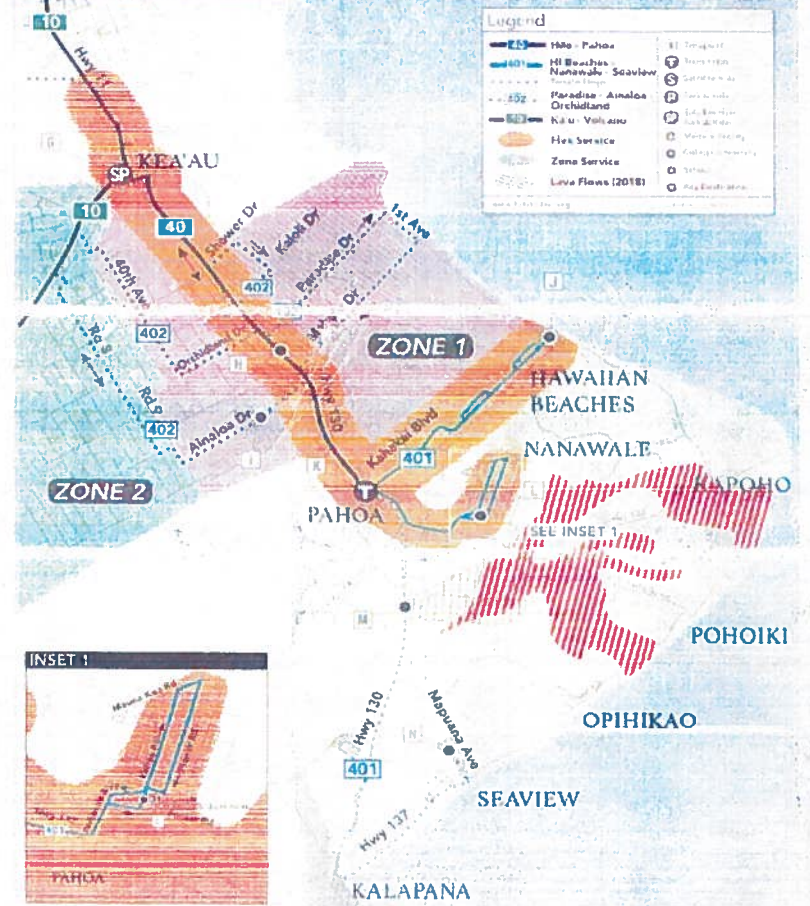
- Route 40 goes from Puna to Hilo
- Route 10 goes from Ka'u/Volcano to Kea'au and then on to Hilo
- Red Line Express (New) will go from Volcano to Hilo
- By not having to go into all the subdivisions, these lines can run more frequently, from eleven trips daily to fourteen or more



Route 401 – Hawaiian Beaches- Nanawale-Seaview

Figure 4-32. Route 101 Hawaiian Beaches, Nanawale, Kalapana

Hele On Bus Route - #401 - Hawaiian Beaches-Nanawale-Seaview

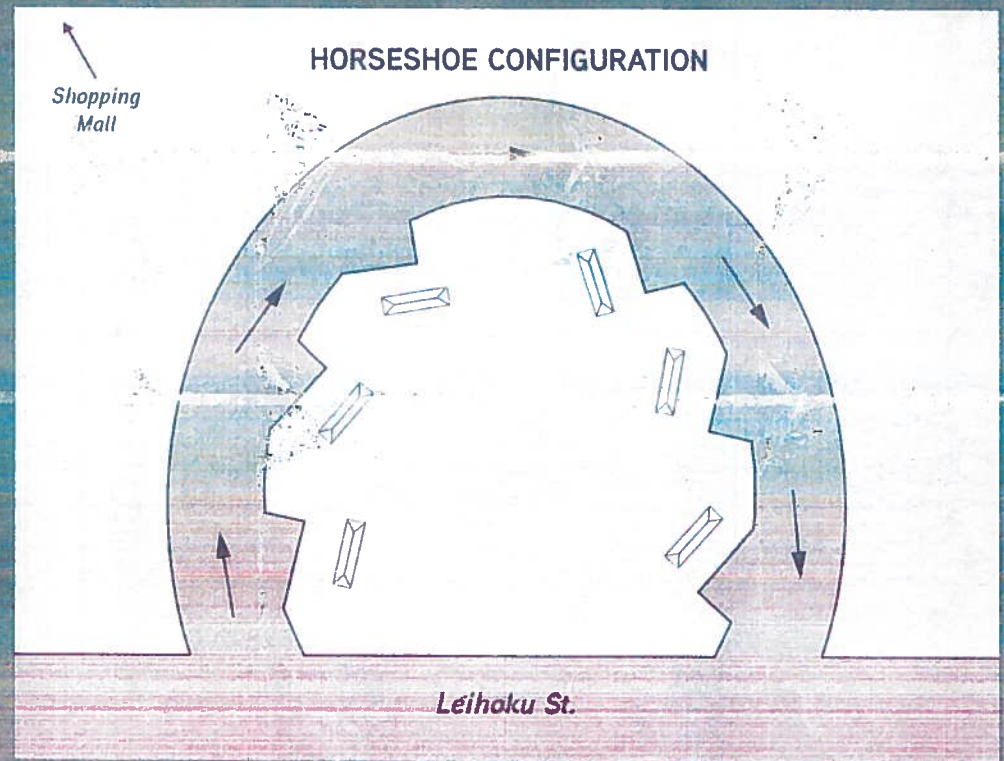


Location and Features of Hubs

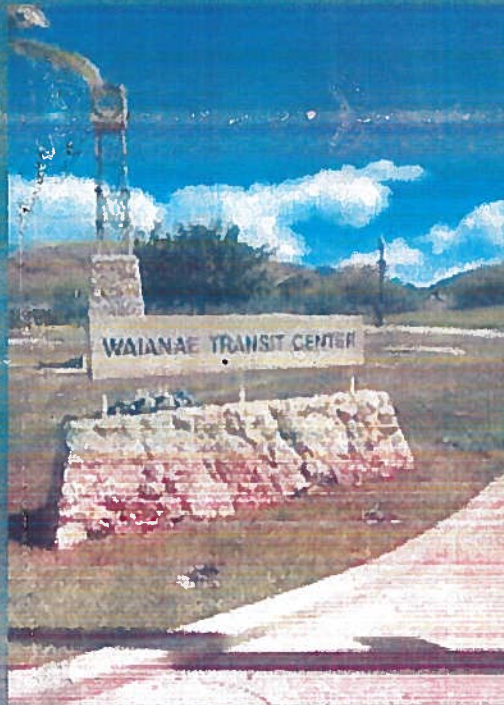
- Should be in a central location, close to business and schools and shops
- Features can include:
 - > Multiple shelters and benches
 - > Multiple Pull outs for the buses to wait and load
 - > Proper signage and lighting
 - > Places for passengers to be dropped off
 - > Locations for taxi or Uber/Lyft type pick ups
 - > Possibly park and ride spaces
 - > Possibly bathrooms

Example: Horseshoe Configuration – Wai‘anae Hub on Oahu

- Area: 62,200 sq. ft. (1.43 acres)
- Features: A roundabout transit facility with seven (7) shelter structures connected on Leihoku Street
- Number of Bus Lines Entering: 8
- Bathroom: 1 Portable Toilet and 1 ADA Portable Toilet

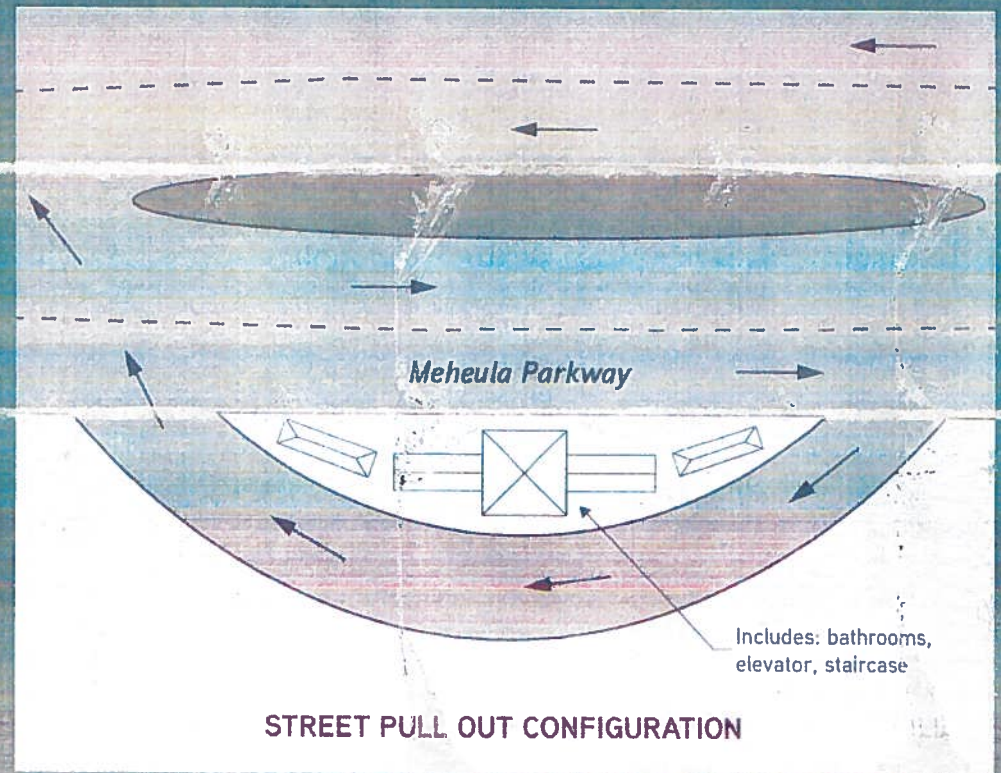
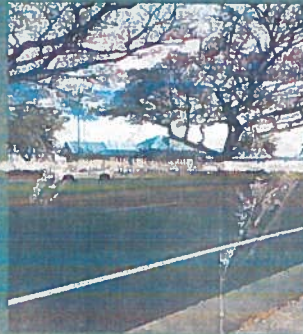


Features at Wai'anāe Hub



Example: Street Pass Through Hub – Mililani on Oahu

- Area: 37,000 sq. ft. (0.85 acre)
- Features: Two level structure with elevator and a community conference room facility. Bus patron parking is available on the lower level.
- Number of Bus Lines Entering: 9
- Bathroom: Yes (1 Male and 1 Female)



Features of Mililani Hub

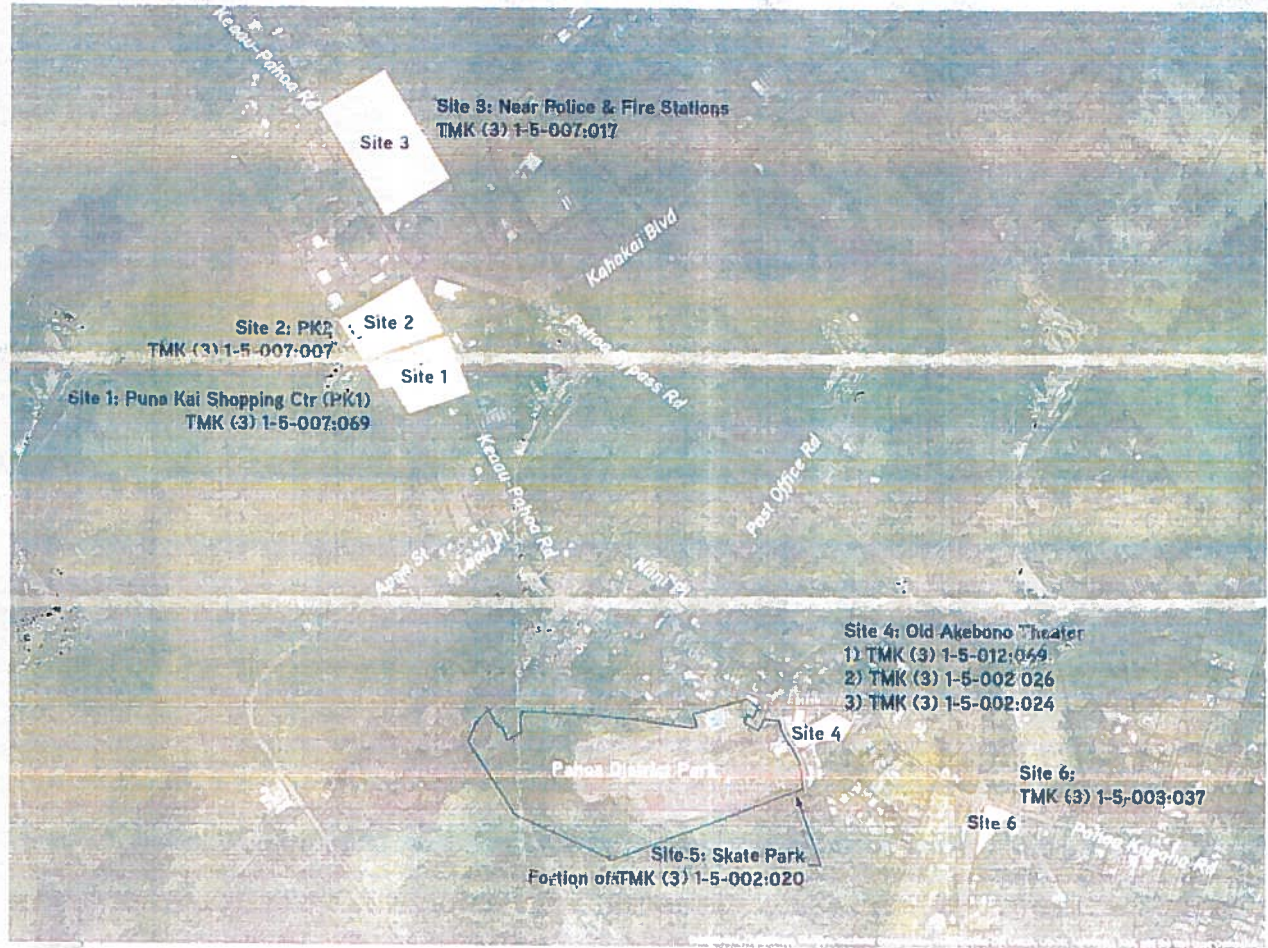


So what would be best for Pahoa?

- Where should it be located?
- What features should it have?

Six Alternative Locations Identified

Site Name	Size	T.M.K.	Zoning	Ownership
SITE 1 Puna Kai Shopping Center (PK 1)	9.9 acres 0.9 acres (road)	(3)1-5-07:069 (3)1-5-07:055	A-1a CV-18 (third)	Willow Plaza LLC (fee); Lessees for Puna Kai State
SITE 2 Puna Kai 2	9.4 acres	(3)1-5-07:007	A-1a	NHS, Inc
SITE 3 Near Police and Fire Stations	19.5 acres	(3)1-5-07:017	A-1a	State via EO to County
SITE 4 Across Pāhoa Community Center (Former Akebono Theater)	0.3 acres 0.6 acres 2.3 acres	(3)1-5-12:069 (3)1-5-02:026 (3)1-5-02:024	CV-10 RM-2	Akebono Properties LLC (fee) Akebono Town Center LLC (fee) Akebono Town Center LLC (fee)
SITE 5 Behind District Park, near pool, apartments, skate board park	7.1 acres	(3)1-5-02:020	A-1a	County of Hawaii
SITE 6 Intersection of Pāhoa Bypass Road and Pāhoa Kapoho Road	1.54 acres	(3)1-5-003:037	RS-10	Gilbert Aquinado Aquinado 4 LLC Co



Site 3: Near Police & Fire Stations
TMK (3) 1-5-007:017

Site 2: PK2
TMK (3) 1-5-007:007

Site 1: Puna Kai Shopping Ctr (PK1)
TMK (3) 1-5-007:069

Site 4: Old Akebono Theater
1) TMK (3) 1-5-012:049
2) TMK (3) 1-5-002:026
3) TMK (3) 1-5-002:024

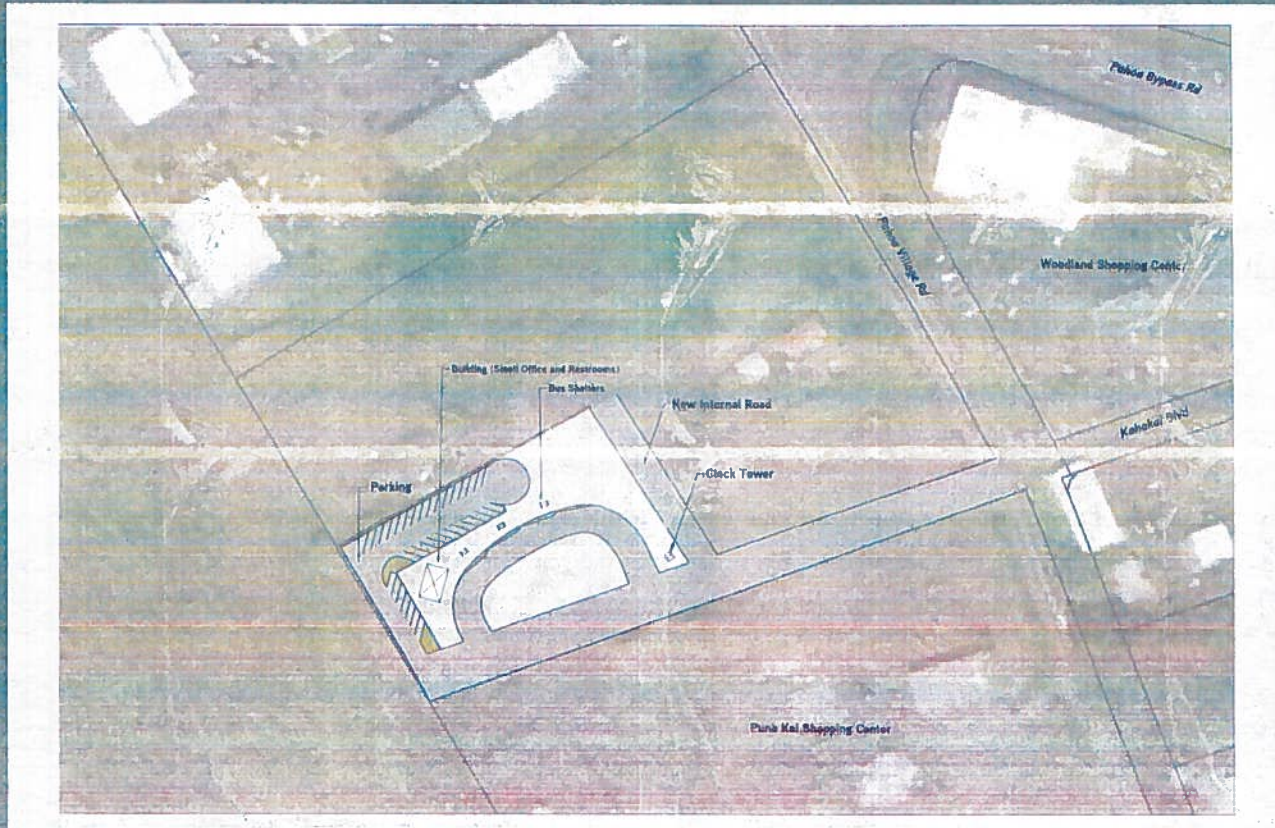
Site 5: Skate Park
Portion of TMK (3) 1-5-002:020

Site 6:
TMK (3) 1-5-003:037

Air Photo of Sites 1 and 2



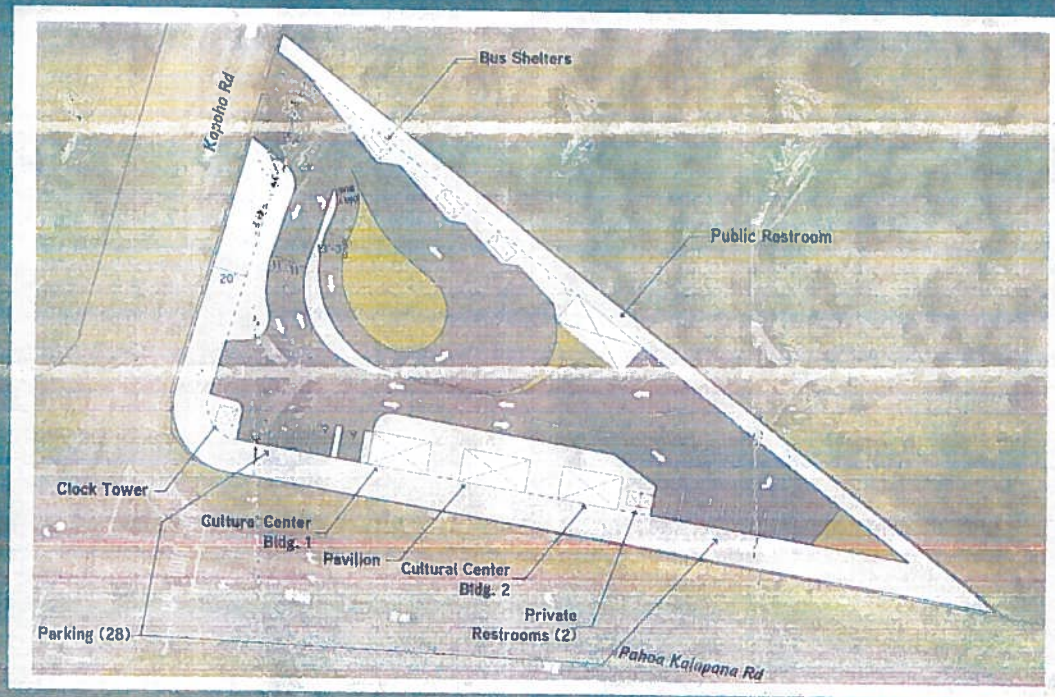
Example Hub Layout



Aerial Photo Site 6



Example 2: Hub Layout Site 6



Discussion

What are your thoughts?

Mahalo for your input

