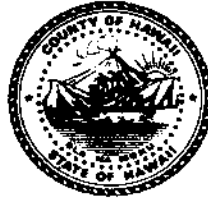


From the office of -
Council Member
District 3



Office: (808) 961-8396
Fax: (808) 961-8912
Email: sue.leeloy@hawaiicounty.gov

SUSAN L.K. LEE LOY
25 Aupuni Street, Hilo, Hawai'i 96720

MEMORANDUM

DATE: April 5, 2017
TO: Valerie T. Poindexter, Council Chair
and Members of the Hawai'i County Council
FROM: *f/l/lor* Sue Lee Loy, Council Member
SUBJECT: Re: Testimony from Luahiwa Namahoe.

2017 APR - 5 AM 9: 16
COUNTY CLERK
COUNTY OF HAWAII

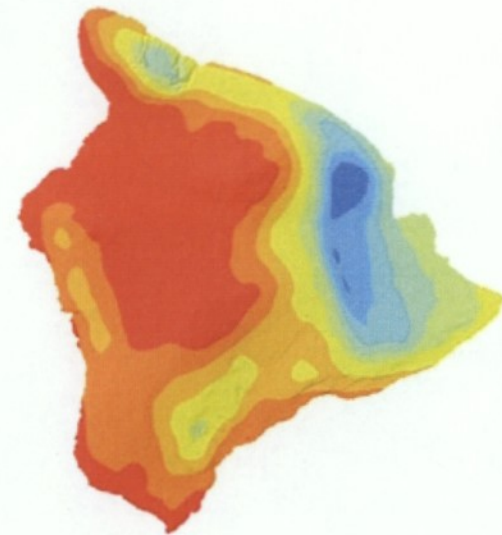
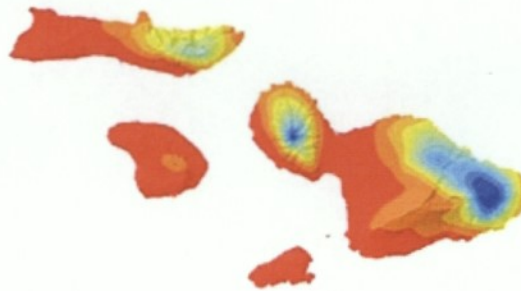
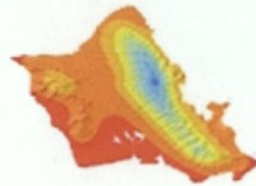
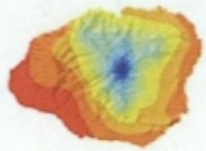
Attached for the Council's information are three maps submitted by Luahiwa Namahoe regarding her testimony on Resolution No. 101 and/or Resolution No. 135.

SLL:ps
Att.

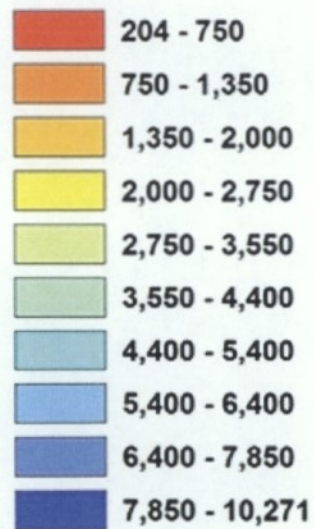
Comm. No. 140.4
Ref. To: P/Cou
Ref. Date: 4-5-17

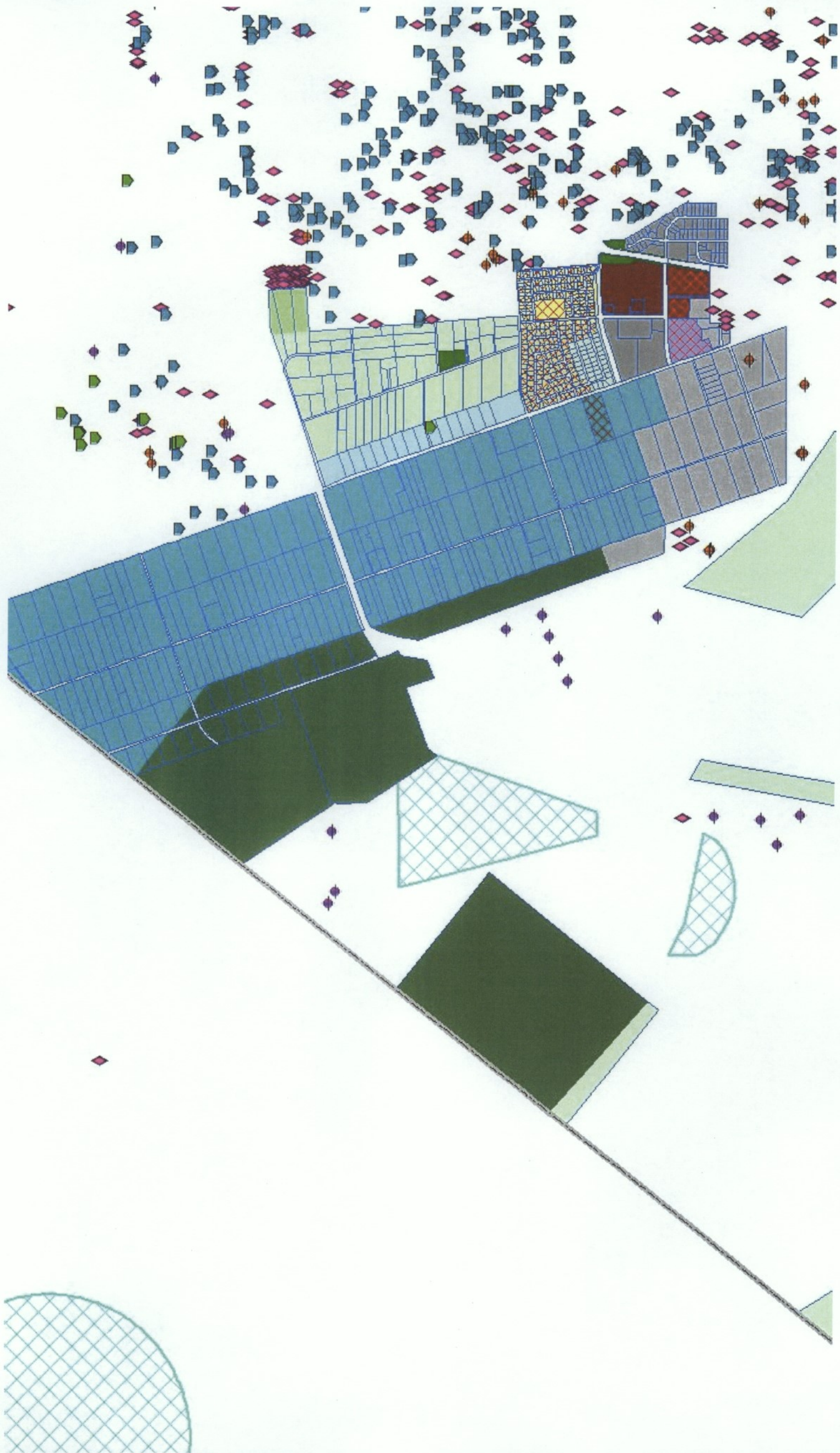
Mean Annual Rainfall State of Hawai'i

2013 Rainfall Atlas of Hawai'i
Department of Geography, University of Hawai'i at Mānoa



Annual Rainfall (mm)





Map of Hilo Hanakahi (Keaukaha, Waiakea Kai, Panaewa)



From Water Use and Development Plan Update, Chapter 3 Section 804 Northeast Mauna Loa Aquifer, (2010)

http://hawaiidws.org/7%20the%20water/wateruseplan/HWUDP%20Chapter%20804_Addendum%201.pdf