

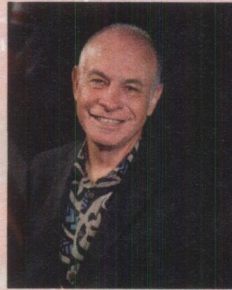
COUNTY OF HAWAI'I

Mitchell D. Roth
Mayor

Lee E. Lord
Managing Director

Robert H. Command
Deputy Managing Director

Office of the Mayor



MAYOR'S MESSAGE

Aloha and Konichiwa,

We are excited, honored, and humbled to celebrate our 60th Anniversary as Sister Cities.

Bound by more than our names, which are both known as "Big Island," we share much more in common. For instance, our commitment to global partnership has helped us thrive for more than half a century.

I can only imagine what it must have been like for Thomas K. "Lofty" Cook, the Chairman and Executive Officer of the Board of Supervisors of the County of Hawai'i, and Toyonosuke Fujii, the first Mayor of Oshima Island to enter into the first-ever Sister City agreement. Through their commitment and courage, our county has expanded our relationships globally – and it all started with Oshima.

As we begin to emerge from the COVID-19 pandemic, we will continue to rely on our partnership to bolster our economies and strengthen our communities through tourism, trade, and cultural exchange.

Our island will always be open to you and your residents, and we hope the same continues to be true for us.

Until then, we will anxiously await the return of travel so that we can come together to share ideas, talk about our struggles, and ultimately strengthen our relationship for decades to come.

From our "Big Island" to yours, Aloha and a hui hou – until we meet again – Sayonara.

Me ke aloha, with our aloha,

A handwritten signature in black ink that reads "Mitchell D. Roth". The signature is written in a cursive, flowing style.

MITCHELL D. ROTH
MAYOR