

# CHRISTINE FEINHOLZ, GISP

Senior Geospatial Analyst



Aloha Mr. Ewbank –

I am a 35-year Hawaii resident with over 25 years of experience in geospatial services. I have been a certified GIS Professional (GISP) for over ten years. I'm excited to offer locally-sourced GIS services to the Hawaii County Department of Information.

As a classically-trained geographer at the University of Hawaii, Hilo I have a unique understanding of the local geography and people of Hawaii island. I have a dedicated interest in assisting local government with the development of intra- and inter-agency geospatial services infrastructure to ensure that they have the information needed to get the job done with accuracy and efficiency.

I've included my resume with testimonials of my work and references. I am eager to talk more about working with your team, and I am available for immediate consultation.

Cheers,

*Christine Feinholz*

June 12, 2023



**OFFICE**

12-7241 Ki'i Nani St.  
Box 4756  
Pahoa, HI 96778

808.497.4671

[christinefeinholz@gmail.com](mailto:christinefeinholz@gmail.com)

# CHRISTINE FEINHOLZ, GISP

## Senior Geospatial Analyst

### EDUCATION

#### San Diego State University (1998-2000)

Coursework completed toward a Master's of Arts

GPA – 3.65

- Advanced remote sensing theory and methods
- Advanced GIS and geospatial programming

#### University of Hawai'i at Hilo (1994-1998)

Bachelor of Arts

GPA – 3.93

- Physical Geography
- Climate and Environment

### PUBLICATIONS

Noori, Lihla; Atkinson, Scott; Anders, E.; Parks, John; Giardina, Christian; Winter, Kawika; Mejia, Manuel; Feinholz, Christine; Mathews, Tiffany. (2018). How healthy is your ahupua'a? Community Watershed Snapshot Guidebook. Honolulu, HI: Hawai'i Conservation Alliance. 130 p.Hokulani

Levine, Arielle Sarah, and Christine Loftus Feinholz. "Participatory GIS to inform coral reef ecosystem management: Mapping human coastal and ocean uses in Hawaii." *Applied Geography* 59 (2015): 60-69.

### DEVELOPED DATA AND MAPS FOR PUBLICATIONS

Aikau, Hokulani K., Nahaku Kalei, and Bradley Wong. "He'eia Kūpuna Mapping Workshops." *At Home and in the Field*. University of Hawaii Press, 2015. 222-228.

Gombos, Meghan, et al. "Hawai'i coral reef strategy: priorities for management in the main Hawaiian islands 2010-2020." NOAA Pacific Services Center (2010).

Smultea, Mari A., Thomas A. Jefferson, and Ann M. Zoidis. "Rare Sightings of a Bryde's Whale (*Balaenoptera edeni*) and Sei Whales (*B. borealis*) (Cetacea: Balaenopteridae) Northeast of O'ahu, Hawai'i." *Pacific Science* 64.3 (2010): 449-457

Norris, T. F., Smultea, M. A., Zoidis, A. M., Rankin, S., Loftus, C., Oedekoven, (2005). A preliminary acoustic-visual survey of cetaceans in deep waters around Ni 'ihau, Kaula 'i, and O'ahu, Hawai 'i . February 2005. Prepared by Cetos Research Organization, Bar Harbor, Maine, under contract, (2057sa05-F).



### CONTACT

12-7241 Ki'i Nani St.

Box 4756

Pahoa, HI 96778

808.497.4671

[christinefeinholz@gmail.com](mailto:christinefeinholz@gmail.com)

### SKILLS

ArcGIS (Map and Pro)

ArcGIS Online ArcGIS

ArcGIS Spatial Analyst

Model Builder

SocialPinpoint

Adobe Illustrator

ERDAS

Microsoft Office Suite

Microsoft Access

Proposal/Grant Writing

Procurement

### CERTIFICATIONS

Certified GIS Professional

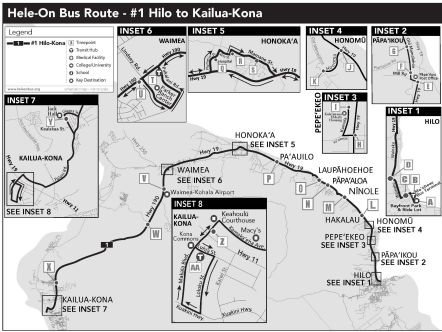
# CHRISTINE FEINHOZ, GISP

## SELECTED RELEVANT CONSULTING EXPERIENCE

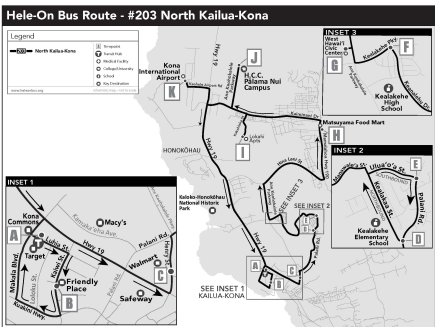
### Pacific Cartography

Senior Geospatial Analyst (2012 - 2022)

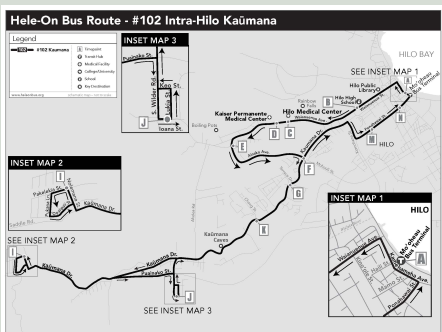
**Hawaii County Mass Transit Agency.** Design and develop bus route maps. Design and develop an island-wide transit brochure. Develop and update transit-related bus route GIS files.



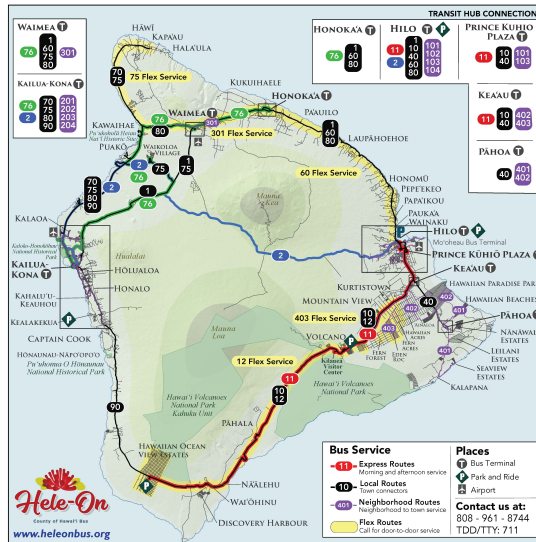
HeleOn Route 1



HeleOn Route 203



HeleOn Route 102

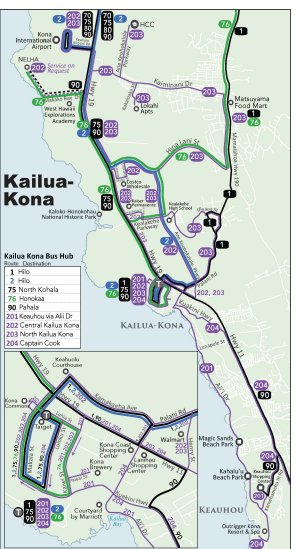
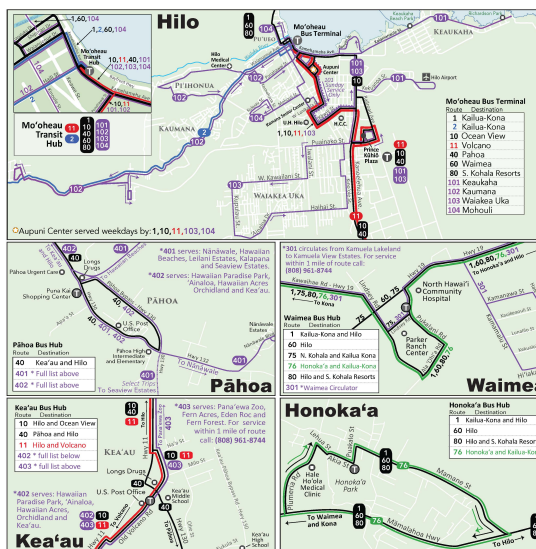


**Aloha & E Komo Mai**  
The friendly professionals at Hele-On welcome you! The County of Hawaii Mass Transit Agency is pleased to provide this bus service to you! We hope that you will "Take the Trip!" and enjoy the safety, convenience and service that Hele-On has to offer!

**Service Hours**  
Hele-On bus service is generally available Monday-Sunday between the hours of 3:15 a.m. and 2:00 a.m., depending on the route. Please see route timetables for details. Sunday schedules operate on County observed holidays which are: New Year's Day, Dr. Martin Luther King Jr. Day, Presidents Day, Prince Kuhio Day, Good Friday, Memorial Day, King Kamehameha Day, Independence Day, Statehood Day, Labor Day, Election Day, Veterans Day, Thanksgiving Day and Christmas Day. Pay close attention to which routes operate on Sundays and County observed holidays.



Telephone: (808) 961-8744  
TDD/TTY: 711  
[www.heleonbus.org](http://www.heleonbus.org)  
Effective Sunday, August 28, 2022



Hawaii County Transit Brochure

# CHRISTINE FEINHOLZ, GISP

## SELECTED RELEVANT CONSULTING EXPERIENCE

### Pacific Cartography

Senior Geospatial Analyst (2012 - 2022)

#### Hawaii Conservation Alliance (HCA) Watershed Health Web Mapping (2015-2016).

Design and develop a statewide interactive web map detailing watershed health based on a set criteria of variables to be used by conservation professionals. Design and develop watershed-based webmaps for three communities geared towards public use. This work resulted in a comprehensive manual to guide communities to assess the health of their watershed. The link to the guidebook is below:

<https://www.hawaiiconservation.org/wp-content/uploads/HCA-CWS-Guidebook-web.pdf>

#### Maui County Important Agricultural Lands (IAL) Mapping Project (2019-2022).

Map parcels eligible for IAL designation based on a suite of data including planning boundaries, USDA-NRCS soils data, aquifers, land cover and other relevant datasets. Obtained water-related data and information from various water-related agencies. Developed a matrix and map of aquifer data regarding forecast supply and demand from each island's Water Use Development Plan (WUDP) report.

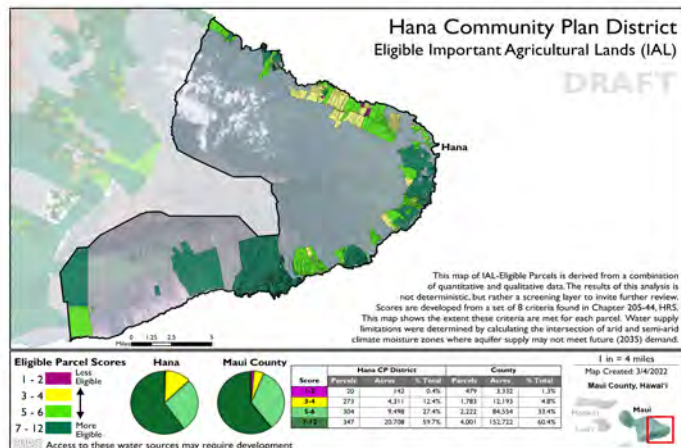
Developed a project website utilizing SocialPinpoint software to provide users with an interactive map to collect spatial comments, a survey and a project chat room.



HCA Watershed Health Interactive Map



Maui IAL Project Website



Hana Community Plan IAL-eligible Lands

## CHRISTINE FEINHOLZ, GISP

### SELECTED RELEVANT EMPLOYMENT EXPERIENCE

#### IMSG on contract to the NOAA Pacific Services Center

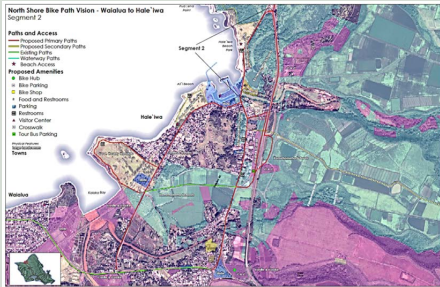
*Senior Geospatial Analyst (2006 – 2011)*

- Maintain, manage, and distribute geospatial data, imagery, and Lidar holdings for Hawaii and the US Pacific Territories.
- Coordinate GIS projects with other NOAA offices (NMFS, Sanctuaries, CRED)
- Coordinate and advise Hawaii State, County, and City jurisdictions on geospatial data acquisition, development, maintenance, deployment, and metadata authoring.
- Perform ground accuracy assessments and on-screen photo identification of land cover classes as part of the NOAA Coastal Change Analysis Program.
- Provide on-site and remote technical assistance to Pacific Island partners in Hawai'i, Guam, the CNMI, and American Samoa.
- Technical Advisor to the Hui O Ko'olaupoko "Ko'olaupoko Urban Sub-basin Action Plan."
- Technical Advisor to the "Hawai'i Coral Reef Strategy 2010-2020."
- Technical advisor to the Kako'o O'iwi He'eia Restoration Project where kupuna were interviewed to map historic land-use practices in the lo'i and fishpond.
- Create geospatial training modules to be deployed both by live trainers and online.
- Technical lead for the West Maui Coastal Uses Mapping community participatory workshops.
- Manage the design and development of the online Guam Resource and Environmental Assessment Tool. This tool provides parcel-level environmental resource reports to planners and resource managers.

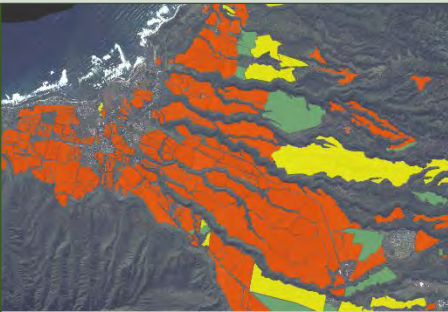
#### Weslin Consulting Services

*Geospatial Analyst (2002 – 2006)*

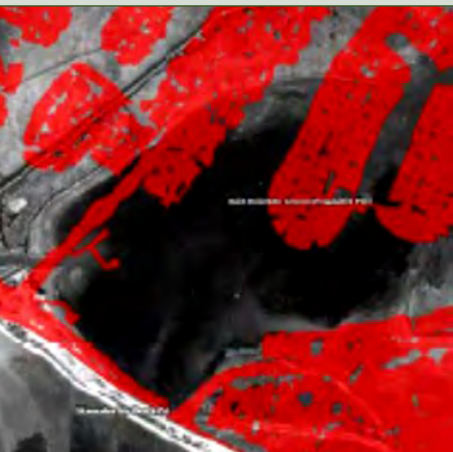
- Complete extensive and detailed Hawaii statewide demographic and land-use analysis using 2000 Census data in relation to public transportation. Created a custom GIS database for the OMPO for Environmental Justice compliance. Transportation network planning.



North Shore Bicycle Corridor Plan (2015)



Agriculture mapping on c'ahu. (2014)



Historical water data derived from 1927 aerial photographs compared to impervious surfaces in 2010, Hawai'i Kai, O'ahu. (2016)

# TESTIMONIALS AND REFERENCES

## CHRISTINE FEINHOLZ, GISP

### **John Parks**

*Former Federal Program Officer  
National Oceanic and Atmospheric Administration*

Ms. Feinholz is not only technically competent and highly effective in geospatial analysis, but also a pleasure to work with. Her services provided to the Nature Conservancy of Hawaii allowed our team of marine scientists to both identify the highest priority areas of coral reef habitat and also communicate spatial analysis results clearly and credibly through compelling and easily-understood maps.

In addition to being creative, intelligent, and technically gifted, Ms. Feinholz is able to communicate the complexities of geospatial analysis with partners and clients with simplicity and clarity, making her skills accessible and understood by all. Her outgoing and warm personality makes her approachable and enjoyable to work with. I strongly recommend the opportunity to work with Ms. Feinholz.

### **Joan Delos Santos**

*Former GIS Program Manager  
Hawai'i State Office of Planning*

[Review comments on the Maui County Important Agricultural Lands Mapping Project:](#) "I wanted to tell you want an excellent job I think you did on this project. Everything is so well documented, maps and supporting materials are so clear and easy to understand and use (in my opinion). The analysis seems to have been done in a logical and thoughtful manner. Really, really excellent work!"

## REFERENCES

### **Lihla Noori**

*Former Director Hawaii Conservation Alliance  
lihla.noori@gmail.com  
727-871-2172*

### **Jordan Hart**

*Former Director Maui County Planning Department  
Jordan.Hart@co.maui.hi.us  
808-270-7253*