

# County of Hawai'i

## Department of Information Technology

NOTICE TO PROVIDERS OF PROFESSIONAL SERVICES  
for fiscal year 2023-2024, beginning July 1, 2023

### Letter of Interest and Statements of Qualifications for DS.1) Computer Engineering (*GIS Mapping/Programming Services*)

Prepared for:  
Mr. Robert Ewbank  
Department of Information Technology  
County of Hawai'i  
25 Aupuni Street  
Hilo, Hawai'i 96720

June 30, 2023



*letter of interest*



111 S. King Street  
Suite 170  
Honolulu, HI 96813  
808.523.5866  
www.g70.design

June 30, 2023

Mr. Zendo Kern, Planning Director  
Planning Department  
County of Hawai'i  
101 Pauahi Street, Suite 3  
Hilo, HI 96720

**Subject: Statement of Qualifications & Letter of Interest  
Planning Department, County of Hawai'i for Fiscal Year 2023-2024**

Dear Mr. Kern:

G70 is pleased to express interest in providing professional services to the County of Hawai'i Planning Department for the Fiscal Year 2023-2024 in the following categories:

**PL.4) Community Planning** (Community Regional Plans, General Plan, Climate Adaptation)

Established in 1971, G70 is Hawai'i's largest full service multi-discipline design firm providing integrated services for sustainable development in architecture, civil engineering, planning and environment, geographic information systems, technology, and interior design. Our team brings a collective high level of talent unique in our approach and broad thinking from typical firms. G70's team will:

- ✓ **Create Value** – understanding our client, culture and community to design innovative solutions that deliver a successful project on time, and on budget.
- ✓ **Provide a “One Stop Shop” of Skilled Professionals** - collaborative and multidiscipline team of professionals including engineers, planners, architects, interior designers, information technologists, cultural specialists, software engineers, GIS technicians, graphic designers, asset managers, and communications personnel.
- ✓ **Be Culturally Relevant in Design and Project Management** – years of experience and involvement with the local culture, community and government agencies allow us to deliver successful projects.
- ✓ **Promote Sustainable Principles** – delivering solutions that consider the context of the project using a cross discipline, life cycle perspective to integrate and protect resources and the community.
- ✓ **Leverage Technology** – knowledge and ability to utilize technological tools to provide efficient and valued added service.

**1. The name of the firm or person, contact information including email address, the principal place of business, and location of all of its offices;**

Name of firm: Group 70 International dba G70  
Firm Address: 111 S. King Street, Suite 170  
Honolulu, HI 96813

Contact Person: Kāwika McKeague, AICP, Principal Planner  
Email Address: [kawikam@g70.design](mailto:kawikam@g70.design)  
Phone number: (808) 523-5866

**2. The age of the firm and its average number of employees over the past five years:**

G70 was founded in 1971. We have averaged 100 employees over the past five years and we currently have 107 employees.

**3. The education, training, and qualifications of the individual, or if a firm, its key employees in accordance with HRS 103D-304 and/or the professional and scientific occupation series contained in the United States Office of Personnel Managements' Qualifications Standards Handbook:**

Please see Resumes of Key Personnel

**4. A list of recent projects and the names of up to five clients who may be contacted, including at least two for whom services were rendered during the preceding year:**

- DHHL Pu'u 'Ōpae Kuleana Settlement Plan
- DHHL Anahola Settlement Plan
- KS Keauhou Bay Management Plan
- DOT, Hilo Harbor, Multiple Improvements
- Keaukaha Pana'ewa Farmers' Association Master Plan
- Hale Pohaku Mid-Elevation Facilities, Master Plan & EIS
- Hiluhilu/UH West Hawai'i, EIS & Permits
- Kea'au High School, Site Evaluation Study/EIS
- Kea'au II Elementary School, Site Evaluation Study/EIS
- NELHA Master Plan
- Hilo Judiciary Site Selection/EIS
- Kona Judiciary Complex, Site Selection/EIS
- Lā'īpa la Heights, EA & Permits
- Palamanui – A Hiluhilu Development, Master Plan, EIS
- UH Hilo Student Life & Events Center, Master Plan, EA
- Kamakana Villages at Keahuolu
- Kekaha Kai State Park Master Plan/EIS
- Keauhou Bay Master Plan
- Parker Ranch Master Plan
- Mauna Kea Master Plan/EIS
- Kawaihae Harbor EIS Improvements
- 'Ewa/Central Development Plan
- CNMI State Standard Mitigation Plan
- Lā'ie Community – Master Plan, EIS, Permits, and Wetland Studies
- Ko'olau Loa Sustainable Communities Plan
- Kamehameha Schools North Shore Plan
- Wailua Town Master Plan
- DHHL Kahikinui Regional Plan
- DHHL Waimea Nui Regional Community Development, EA
- Kalaeloa Harbor 2040 Master Plan/EIS

Client References		
Name	Organization	Phone Number
Mr. Steve Kelly	Kapolei Properties	(808) 674-6674
Mr. Barry Usagawa	City and County of Honolulu – Board of Water Supply	(808) 748-5900
Mr. Andrew Choy	Hawai'i State Department of Hawaiian Home Lands, Hawaiian Homes Commission, Planning Office	(808) 620-9279
Ms. Hilarie Alomar	Kamehameha Schools, Planning & Development Division	(808) 523-6223
Mr. Joseph Earing	Department of Accounting and General Services – Planning Branch	(808) 586-0486

**5. Any promotional or descriptive literature which the individual or firm desires to submit.**

We have provided supporting data for G70 to include:

- Company Profile
- Key Personnel Resumes
- Project Profiles

We appreciate your consideration of our firm for the above listed category. Should you have any questions, please contact me at (808) 523-5866 or by email at [kawikam@g70.design](mailto:kawikam@g70.design).

Sincerely,



Kāwika McKeague, AICP  
Po'o Lelehua (Planning Principal)

*company profile*

# about g70

## FULL SERVICE

Established in 1971, G70 is Hawai'i's largest full service multi-disciplined design firm providing integrated services for sustainable development in architecture, interior design, civil engineering, and planning & environmental services. We have specific expertise in design for resort communities, residential projects, educational and medical facilities, mixed-use commercial ventures, utilities and roadway infrastructures, and all phases of master planning for major land holdings.

## CREATING VALUE

Based in Honolulu, G70 is staffed with over 100 full-time professionals, including: licensed architects, interior designers, civil engineers, planners, technical specialists, and other support personnel. The firm is on the forefront of sustainable design practices with 33 LEED (Leadership in Energy and Environmental Design) accredited professionals in all areas of service.

## CULTURALLY RELEVANT

G70 is about stewardship. Our work begins with understanding our client, the host culture of each project, and the surrounding community. We work with communities to create designs that not only best serve the people, but also incorporate the cultural, historical and environmental aspects of the land.

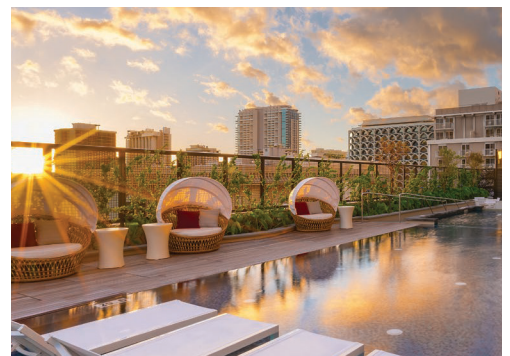
## SUSTAINABLE DESIGNS

Sustainable principles cross all disciplines in project development from planning to design, integrating land resource management and cultural heritage with cutting edge sustainable technology. G70 offers sustainable design methods and tools to plan, build, and monitor the utilities and infrastructure of a project site. We provide asset management resources to maintain, secure, and optimize operating costs for land owners and developers.

## TECHNOLOGY

G70 is progressive in its use and application of design software to enhance visualization and bring efficiency to the design process. Our current list of software being utilized is:

- Revit 2018, 2020
- Dynamo Revit
- AutoCad 2018, 2020
- SketchUp Pro 8
- Photoshop
- Illustrator
- InDesign
- Rhino 5 5
- BIM 360
- Google Earth Pro
- Grasshopper Arc GIS
- Lumion 6.0
- Civil 3D 2018, 2020
- Arc GIS
- Infracore
- Formlabs



# *G70 services*

## ARCHITECTURE

G70 designs architecture that represent the lifestyles of communities and respect the natural landscape surrounding each project. Our emphasis on cultural context, honoring traditional values, combined with contemporary innovation and planning of sustainable environments creates harmonious, memorable designs for our future.



## CIVIL ENGINEERING

Civil Engineering Consulting Services include the full range of services for a civil consulting firm. Our capabilities are broadened significantly with the overlapping services and abilities of G70, including Planning and Environmental Services, Land-Use Permitting, Architecture, Sustainable Development, GIS and Geospatial Services, and Asset Management.



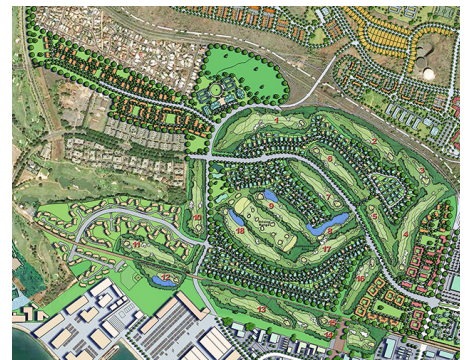
## INTERIOR DESIGN

We believe that interior spaces should have a timeless quality and compliment the architectural style of its environment. Our team includes architects specializing in interior design. We offer custom designed finishes, furniture and architectural elements that offer signature details to enhance our client's individual style.



## PLANNING & ENVIRONMENT

G70 provides comprehensive services to meet the challenges in the planning of communities, regions and the preservation of land resources. We engage the community in the process, assess the land, and prepare the necessary documents to expedite the due diligence process in a timely manner.



# sustainable design

## APPROACH

### HONOR & INTEGRATE

With a deep understanding of an area's culture, heritage, and history at the onset of the design process, G70 is able to create distinctive, award-winning environments, richly appealing, harmonious and increasing in value over time. This is the foundation of good planning and design.

### RESPECT & UNDERSTAND

We are committed to sustainable design principles, approaching each project with in-depth research of the site, to understand its environmental context, geological and topographical features, wind and solar characteristics, and historical and cultural background. We provide innovative GIS and 3D visualization to assist in planning, design and decision making.

### PLAN & MAINTAIN

G70 offers sustainable design methods and tools to plan, build, and monitor the utilities and infrastructure of a project site. With GIS capabilities and state-of-the-art software, we provide asset management resources to maintain, secure, and optimize operating costs for developers.

### LEAD FUTURE DESIGN

Our mission is to foresee a sustainable future now: to initiate, plan, design and build the best-in-class projects that demonstrate leadership in the global sustainability theater.



# sustainable design

## INNOVATION

### EXPERTISE

G70 is on the cutting edge of sustainable development, recognizing the importance and impact of built environments of all types and sizes on individual lives, whole communities, and the entire planet. The firm's resources include a growing number of in-house LEED AP architects, planners, and interior designers working strategically with our clients and partners.

### LEED SERVICES

- Pre-evaluation: identifying economically viable LEED compliance
- Certification: processing and documenting a project through design and construction
- Post-Certification: providing project asset management to ensure long term performance
- Water Efficiency Improvement Assessment
- Credit Products & Technologies Specification
- Credit Innovation & Design programming

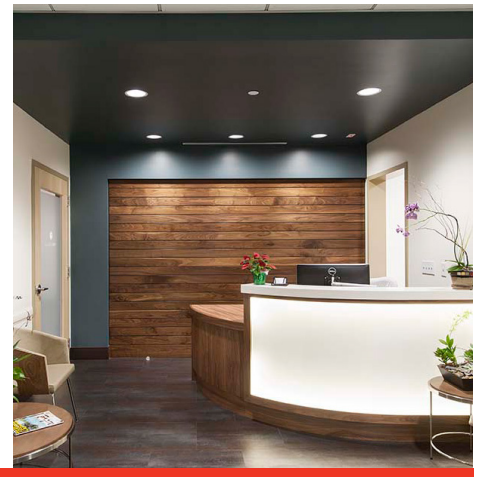
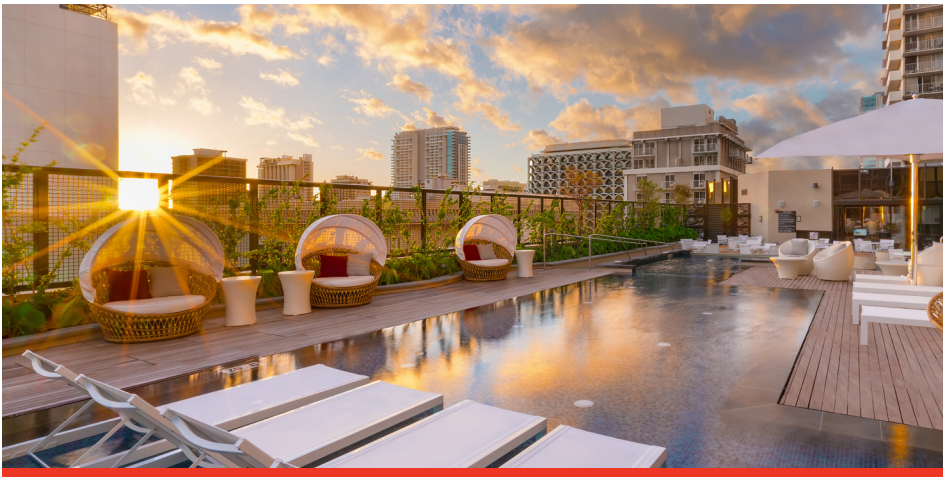
### ACCOUNTABILITY

Our Sustainable Development Division created a proprietary methodology to map specific LEED components such as potable water consumption, graywater utilization, energy consumption, carbon footprint, waste generation, and open space. Following certification, G70 will monitor the ongoing performance of LEED certified projects. This innovative process ensures that the LEED building performs as designed throughout its life.



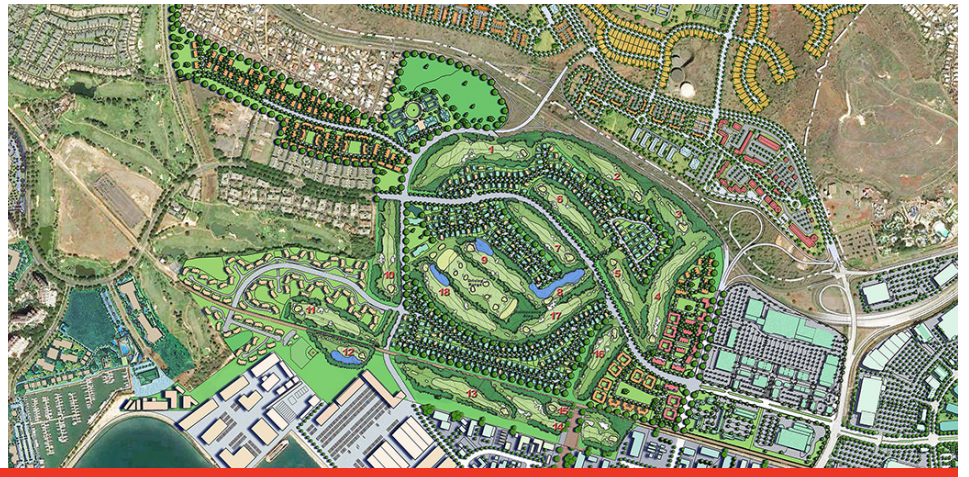
# select client list

- A & B Properties, Inc.
- Actus Lend Lease, LLC
- Aeko Hawai'i
- American Savings & Loan Association
- Amfac Corporation
- Armstrong Builders
- Azabu USA Corporation
- Bank of America
- Bank of Hawai'i
- BHP Gas Company
- Black River Energy, LLC
- Blackacre Institutional Capital Mgt, LLC
- Blackstone
- Brookfield Homes Hawai'i, Inc.
- California Institute of Technology
- Chaminagde University of Honolulu
- Chartres Lodging Group, LLC
- City and County of Honolulu
- CM&D International, Inc.
- Coconut Plantation Holdings, LLC
- Consuelo Foundation
- County of Hawai'i
- Daiei USA
- Department of Business, Economic Development & Tourism
- Department of Defense Education Activity (DoDEA)
- State Department of Transportation Airport Division
- State of Hawai'i Department of Hawaiian Home Lands (DHHL)
- State of Hawai'i Department of Land & Natural Resources (DLNR)
- Dole Foods, Incorporated
- Elleair Hawai'i, Inc.
- First Hawaiian Bank
- Forest City
- Flintridge Partners
- Gay & Robinson, Inc.
- Government of French Polynesia
- Grosvenor International
- Halekulani
- Haseko (Hawai'i), Inc.
- Hawai'i Baptist Academy
- Hawai'i Reserves, Inc.
- Hawai'i Pacific Health
- Hawaiian Electric Industries
- Hawaiian Telephone Company
- Hilton Worldwide
- Hilton Grand Vacation Club
- Hōkūli'a
- Honolulu Board of Water Supply
- Host Hotels and Resorts, Inc.
- Hunt Building Company, Ltd.
- Hyatt Vacation Ownership, Inc.
- 'Iolani School
- Iwasaki Group, Japan
- JRANSA
- Kaiser Permanente Hawai'i
- Kamehameha Schools
- Kāne'ohe Ranch Co. Ltd.
- Kapalua Land Company
- Kapolei Property Development, LLC
- Kaua'i County
- Kaua'i Economic Development Board
- Kaua'i Community Federal Credit Union
- Ke Kailani Development, LLC
- Kisco Senior Living
- Kona Heights, LLC
- Kuakini Medical Center
- Kualoa Ranch



# select client list

- Kuilima Development Company
- Kyo-ya Company, Ltd.
- Landmark Hotels
- Lockheed Martin
- Marianist Center of Hawai'i
- Marine Corps Forces, Pacific (MARFORPAC)
- Marriott Corporation
- Marriott Vacation Club International
- Maui County
- Maui County Employees Federal Credit Union
- Maui Land and Pineapple Co.
- Metropolitan Life Insurance Co.
- Monarch Group
- NAVFAC Pacific
- NEC Telenetwox, Ltd.
- Obayashi Hawai'i Corporation
- Oceanic Properties, Incorporated
- Oceanside Partners
- Otaka Corporation
- Outrigger Enterprises
- Pacific Resources, Incorporated
- PacMar, Incorporated
- Po'ipu Beach Villas, LLC.
- Princess Hotels International, Inc.
- PRM Realty, Inc.
- Prudential Real Estate
- Sentul City
- Shimizu Corporation
- Shin Yang Co., Malaysia
- Shipman Company
- Shiraishi Shokai, Okinawa
- Southern Pacific Communications
- Starwood Capital Group, LLC
- Systems International, Inc., Japan
- The Contemporary Museum
- The Estate of James Campbell
- The Queen Emma Foundation
- The Queen's Health Systems
- The Resort Group
- The Resort Partners
- The Salvation Army
- Theo H. Davies Properties, Inc.
- Tosei Shoji, Incorporated, Japan
- Tri-Mark Pacific Homes
- UH Institute of Astronomy
- University of Hawai'i
- University of Hawai'i Federal Credit Union
- University of the Nations
- US Army Corps of Engineers
- VMS Realty, Incorporated
- Victoria Ward Limited
- Wai'alae Country Club
- Woodridge Capital



# honors & awards

## Central Union Preschool & Kindergarten Phase I

- National Association of Industrial and Office Properties (NAIOP) Hawai'i Nonprofit Kūkulu Hale Award, 2013

## Department of Accounting and General Services No. 1 Capital Place Exterior Renovation (Hemmeter Building)

- Historic Hawai'i Foundation (HHF) Preservation Award, 2019

## Department of Hawaiian Home Lands Kaupuni Village

- American Institute of Architects (AIA) Mayor's Choice Award, 2011
- United States Green Building Council (USGBC) Outstanding Green Project Team Award, 2011
- American Planning Association (APA), Innovation In Planning: Best Practices for Sustainability Award, 2010

## G70 Interiors Office

- American Society of Interior Designers (ASID) Overall Grand Design Award, 2006
- American Society of Interior Designers (ASID) Commercial Design Award of Excellence, 2006
- American Society of Interior Designers (ASID) Green Sustainable Design Award of Excellence, 2006
- Building Industry of Hawai'i (BIA) Overall Grand Award, 2006
- Building Industry of Hawai'i (BIA) Built Green Grand Award, 2006
- National Association of Industrial and Office Properties (NAIOP) Hawai'i Renovation Kūkulu Hale Award, 2006

## G70 First & Second Floor Sustainable Renovations

- Historic Hawai'i Foundation (HPH) Preservation Commendation Award, 2010

## Guam USMC Installation Appearance Plan

- American Society of Landscape Architects (ASLA) Planning & Analysis Honor Award, 2012

## Hanauma Bay Nature Preserve

- American Planning Association (APA) Hawai'i Outstanding Planning Project, 2004
- American Institute of Architects (AIA) Honolulu Award of Merit, 2003
- National Association of Industrial and Office Properties (NAIOP) Hawai'i Award of Merit, 2003
- Building Industry of Hawai'i (BIA) Renaissance Award, 2003
- Hawai'i Tourism Authority (HTA) Keep it Hawai'i Kahili Award, 2003

## Hawai'i Baptist Academy

- American Institute of Architects (AIA) Honolulu Mayor's Choice Award, 2007
- Building Industry of Hawai'i (BIA) Grand Award Hawai'i BuiltGreen, 2007
- National Association of Industrial and Office Properties (NAIOP) Hawai'i Kūkulu Hale Award, 2007

## Hawai'i Baptist Academy High School - Phase I

- General Contractors Association (GCA) Award of Merit, 2014
- American Institute of Architects (AIA) Honolulu Merit Award, 2014



# honors & awards

## Hale Ola, Wailea

- American Society of Interior Designers (ASID) Award of Excellence, 2004

## Hale Pu'u, Wailea

- American Society of Interior Designers (ASID) Award of Excellence, 2004

## Harry and Jeanette Weinberg Ho'okupu Center

- International Interior Design Association (IIDA) Hawai'i Serve Award, 2019

## Hawai'i State Art Museum Sculpture Garden

- Historic Hawai'i Foundation (HPH) Preservation Honor Award, 2014
- American Institute of Architects (AIA) Honolulu Mayor's Choice Award, 2013
- National Association of Industrial and Office Properties (NAIOP) Hawai'i Public/Government Renovation Kūkulu Hale Award, 2013
- American Society of Landscape Architects (ASLA) Honolulu Award of Excellence, 2012

## Hilton Grand Waikikian

- American Resort Development Association (ARDA) ACE Project of Excellence Award, 2010
- Waikiki Improvement Association (WIA) Ho'owehiwehi Nui Award, 2009

## Hilton Hokulani Waikiki

- General Contractor Association (GCA) Award of Excellence - Building Construction, 2014

## Hilton Waikoloa Kings Land Phase I

- American Resort Development Association (ARDA) Award of Green Sustainability Program Within a Resort, 2012

## Hilton Waikoloa Kings Land Clubhouse

- American Society of Heating, Refrigerating & Air-Conditioning Engineers (ASHRAE) 1st Place, Region X, Technology Award, 2011

## Holo Holo Ku Residential Condominiums

- American Institute of Architects (AIA) Honolulu Mayor's Choice Award, 2004
- Building Industry of Hawai'i (BIA) New Residential Division Award, 2004

## HPU Waterfront Lots at Aloha Tower Marketplace

- National Association of Industrial and Office Properties (NAIOP) Hawai'i Renovation Kūkulu Hale Award, 2016

## Hyatt Centric Waikiki Beach

- National Association of Industrial and Office Properties (NAIOP) Hawai'i Renovation Kūkulu Hale Award, 2017

## 'Iolani School Phase I

- National Association of Industrial and Office Properties (NAIOP) Hawai'i New Project Kūkulu Hale Award, 2005
- Building Industry of Hawai'i (BIA) Grand Award, 2004
- American Society of Interior Designers (ASID) Design Awareness Award, 2004
- General Contractor Association (GCA) Award of Excellence, 2004
- Building Industry of Hawai'i (BIA) Renovation Project of the Year, 2002
- National Association of Industrial and Office Properties (NAIOP) Hawai'i New Project Kūkulu Hale Award, 2002



# honors & awards

## 'Iolani School K-1 Community

- American Institute of Architects (AIA) Honolulu Award of Merit, 2020
- American Institute of Architects (AIA) Honolulu People's Choice Award, 2020

## 'Iolani School Residence Hall

- American Institute of Architects (AIA) Honolulu Award of Merit, 2019
- General Contractors Association (GCA) of Hawaii Award of Excellence, 2020

## 'Iolani School Sullivan Center

- National Association of Industrial and Office Properties (NAIOP) Hawaii's New Project Green Building Kūkulu Hale Award, 2014
- General Contractor Association (GCA) Award of Excellence - Design-Build/Design-Assist Construction, 2014
- International Interior Design Association (IIDA) Hawaii's Award of Merit, 2014
- American Institute of Architects (AIA) Honolulu People's Choice Award, 2014

## Japengo - Hyatt Regency Resort & Spa

- Building Industry of Hawaii's (BIA) Renaissance Commercial Remodel Award, 2011

## Kailani at Ko Olina Housing

- Hawaiian Electric Company (HECO) Energy Efficiency Award, 2002
- Parade of Homes First Place Winner, 2002

## Kailua Community Planning

- American Planning Association (APA) Renovation Project of the Year, 2002



Kauna 'o'a Country Club

## Kalihi Valley Homes Phase I Renovation

- American Institute of Architects Pacific NW Region (AIA NW) Award of Merit, 2003
- American Institute of Architects (AIA) Honolulu Award of Merit, 2002
- Building Industry of Hawaii's (BIA) Renaissance Commercial Remodel Award, 2011
- National Association of Industrial and Office Properties (NAIOP) Hawaii's Renovation Project of the Year Kūkulu Hale Award, 2002

## Kamakana Villages at Keahuolu

- American Planning Association (APA) Outstanding Planning Award, 2011

## Kamehameha Schools Cultural Resource Management Plan

- American Planning Association (APA) Environmental / Preservation Award, 2013

## Kamehameha Schools Hale'iwa Store Lots

- National Association of Industrial and Office Properties (NAIOP) Hawaii's Renovation Kūkulu Hale Award, 2017
- American Council of Engineering Companies (ACEC) Hawaii's Engineering Honor Award, 2016
- American Planning Association (APA) Hawaii's Historic Preservation Award, 2015

## Kamehameha Schools Hawaii'i Campus

- National Association of Industrial and Office Properties (NAIOP) Hawaii's Non-profit Kūkulu Hale Award, 2009



Kamehameha Schools Cultural Resource Management Plan



Kamehameha Schools Hale'iwa Store Lots

# honors & awards

## Kamehameha Schools Maui Campus

- National Association of Industrial and Office Properties (NAIOP) Hawai'i National Planning Excellence Award for Innovation in Sustaining Places, 2011

## Kamehameha Schools North Shore O'ahu Master Plan

- American Planning Association (APA) National Planning Excellence Award for Innovation in Sustaining Places, 2011
- American Planning Association (APA) Outstanding Planning Award, 2008

## Kaua'i Community Federal Credit Union

- National Association of Industrial and Office Properties (NAIOP) Hawai'i New Non-Profit Project Award, 2012

## Kauna'oa Country Club

- Building Industry of Hawai'i (BIA) Grand Award New Commercial, 2007

## King Kamehameha Kona Beach Hotel

- National Association of Industrial and Office Properties (NAIOP) Hawai'i Renovation Kūkulu Hale Award, 2011
- American Society of Interior Designers (ASID) Award of Honor, 2010

## Koloa Landing Resort & Spa

- General Contractor Association (GCA) Award of Excellence - Building Construction, 2014

## Kuhio Park Terrace

- American Institute of Architects (AIA) Honolulu Mayor's Choice Award, 2010

## Laiopua 2020 Community Center

- American Planning Association (APA) Hawai'i Community-Based Planning Award, 2008



## Lyon Arboretum

- American Planning Association (APA) Hawai'i Preservation Award, 2006

## Maui Ocean Club Timeshare Conversion

- Hawai'i Green Business Award for Outstanding Efforts, 2012
- American Resort Development Association (ARDA) Gold Award, 2003

## Joan K. Mendel Kingergarden Classroom

- American Institute of Architects (AIA) Honolulu Award of Merit, 2019

## Nanea Clubhouse

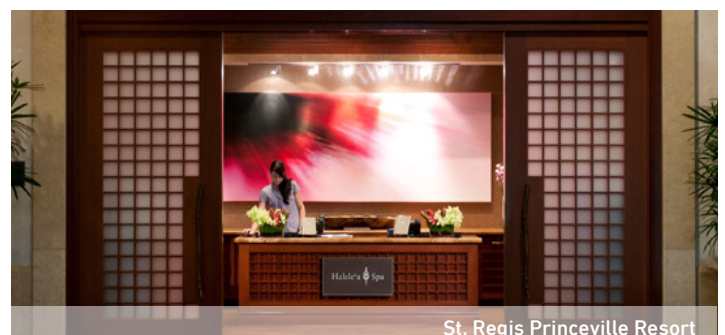
- American Institute of Architects Pacific NW Region (AIA NW) Design Citation Award, 2006
- Building Industry of Hawai'i (BIA) Overall Grand Award for New Commercial, 2006
- National Association of Industrial and Office Properties (NAIOP) Hawai'i Commercial Kūkulu Hale Award, 2006
- American Institute of Architects (AIA) Honolulu Design Award of Excellence, 2005
- Building Industry of Hawai'i (BIA) Division Award New Commercial, 2004

## Parker Ranch Center

- Hawai'i Tourism Authority (HTA) Keep it Hawai'i Award of Merit, 2003

## PBS Hawai'i

- National Association of Industrial and Office Properties (NAIOP) Hawai'i Non-Profit Kūkulu Hale Award, 2018



# honors & awards

## The Salvation Army KROC Center Hawai'i

- National Association of Industrial and Office Properties (NAIOP) Hawai'i New Commercial Kūkulu Hale Award, 2012
- American Society of Interior Designers (ASID) Institutional Award of Excellence, 2012

## St. Regis Princeville Resort

- Building Industry of Hawai'i (BIA) Overall Grand Award for Commercial Remodeling, 2010

## Standard State Mitigation Plan CNMI

- American Planning Association (APA) Hawai'i Current Topic Award Safe Growth, 2004

## Wooden Structures Repair Manual for Historic Facilities at Joint Base Pearl Harbor-Hickam for Commander, Navy Region Hawaii

- Historic Hawai'i Foundation (HHF) Preservation Commendation Award, 2017

## Concrete, Masonry, and Metal Structures Repair and Maintenance Manual for Historic Facilities at Joint Base Pearl Harbor-Hickam for Commander, Navy Region Hawaii

- Historic Hawai'i Foundation (HHF) Preservation Commendation Award, 2018

## U.S. Army Corps of Engineers, Honolulu District Consolidated Real Property Master Plan, Okinawa Area

- Building Industry of Hawai'i (BIA) Overall Grand Award for Commercial Remodeling, 2010

## U.S. Army Corps of Engineers, Honolulu District Consolidated Training and Medical Facility

- Building Industry of Hawai'i (BIA) Overall Grand Award for Commercial Remodeling, 2007

## University of Hawai'i - Center for Microbial Oceanography: Research and Education (C-More)

- American Institute of Architects (AIA) Honolulu Award of Merit, 2012
- American Society of Interior Designers (ASID) Institutional Award of Honor, 2012
- National Association of Industrial and Office Properties (NAIOP) Hawai'i New Commercial Kūkulu Hale Award, 2011
- National Concrete Masonry Association (NCMA), Award of Excellence - Commercial, 2011
- Masonry Institute of Hawai'i, (MIH) Outstanding Work Award, 2010

## Waialua Town Master Plan

- American Planning Association (APA) Hawai'i Hawai'i Community-Based Planning Award, 2005

## Wailea Beach Resort & Spa

- National Association of Industrial and Office Properties (NAIOP) Hawai'i Renovation Award - Commercial/Other Over 40,000 SF, 2019

## Ward Entertainment Center

- Building Industry of Hawai'i (BIA) Overall Grand Award, 2002
- National Association of Industrial and Office Properties (NAIOP) Hawai'i Project of the Year, 2002



# services overview

## Planning & Environment

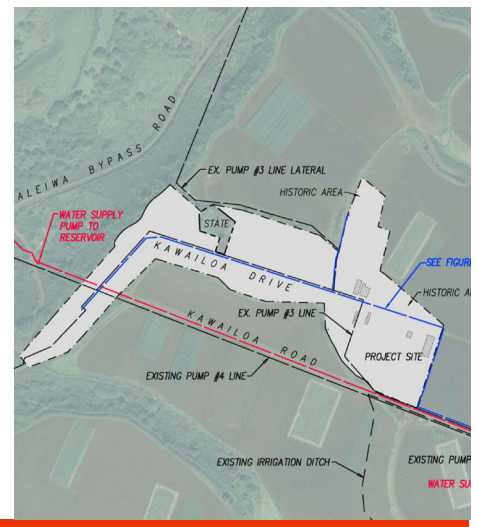
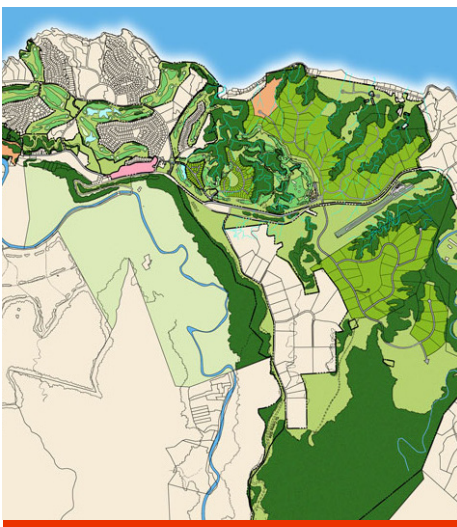
G70 provides a variety of services to meet the complex challenges of planning land resources and diverse communities with a sustainable future. Our extensive experience in all phases of the development process includes Master Planning, Community Building and Land Use Entitlements. We are staffed to manage large-scale Environmental and Physical Planning with architecture to create appealing, sustainable settings.

Our urban and environmental planners collaborate with in-house cultural experts, as well as solicit community input to incorporate historical and cultural elements in our planning process. Before proceeding with any project, we ensure that our environmental studies and land use plans are accepted by the community and the approving agencies.

G70 provides landowners and government agencies with the full range of land use permitting and entitlement services at both the State and County levels.

G70 planning services include:

- Community Master Plans
- Resort Master Plans
- Educational Campus Plans
- Regional, General and Specific Plans
- Urban Design Plan / Design Guidelines
- Park and Open Space Plans
- Community Involvement and Facilitation
- Feasibility Studies and Alternatives Analysis
- Development Constraints Analysis (regulatory, environmental, technical)
- Regional and Area-wide Land Use Planning
- Detailed Property and Site Assessments, and Due Diligence Reporting
- Environmental Assessments and Environmental Impact Statements
- Land Use Permits



# civil engineering

## Services Overview

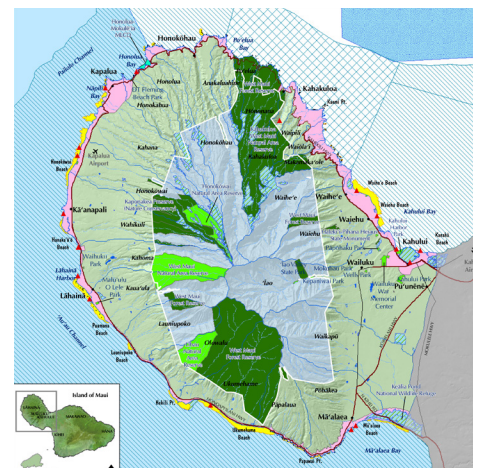
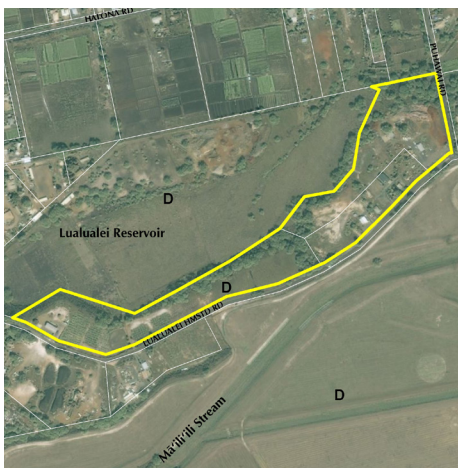
G70 is a full-service civil engineering practice. We provide services for a wide variety of project types serving the public and private sectors, including:

- Land Development
- Residential Site Development
- Commercial Site Development
- Energy Systems Development
- Industrial Site Development
- Resort/Hospitality Site Development
- Institutional/Educational Site Development
- Transportation
- Wastewater
- Water Supply and Distribution
- Utility Infrastructure
- Stormwater Management
- Sustainable Design

Civil Engineering Consulting Services include the full range of services for a civil consulting firm. Our capabilities are broadened significantly with the overlapping services and abilities of G70, including Planning and Environmental Services, Land-Use Permitting, Architecture, Sustainable Development, GIS and Geospatial Services, and Asset Management.

- Site Master Planning and Site Selection
- Infrastructure Master Planning
- Feasibility Studies and Due Diligence
- Preliminary Engineering Report (PER)
- Permitting – NPDES, UIC, Dept. of the Army, Water Quality Certification, SCAP
- Environmental Assessments (EA) and Environmental Impact Statements (EIS)
- Drainage and Water Quality
- Watershed and Ecosystem Management Planning
- Infrastructure Modeling
- Surface Modeling and Earthwork Analysis
- Geospatial Analysis and Mapping
- Construction Plans, Specifications and Cost Estimates
- Bid Proposals and Contract Documents
- Construction Administration and Observation
- Project Management
- Value Engineering
- Visualization Services
- Community Support and Public Involvement

G70 recognizes important trends in our industry and in our society, and we position ourselves and our company to take advantage of trends by adapting our services and abilities. We also anticipate the needs of our clients and provide services to add value to their projects by incorporating services that are synergistic or complementary to each other.



# planning

## GEOGRAPHICAL INFORMATION SYSTEM (GIS)

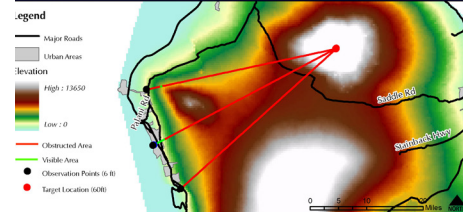
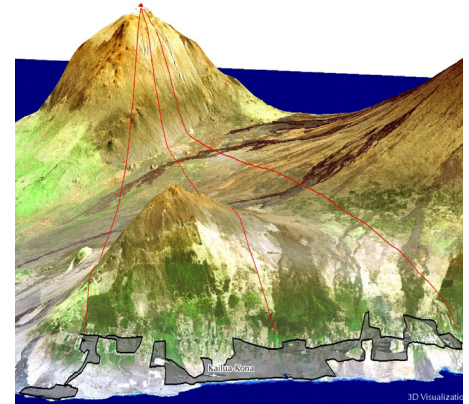
G70 utilizes GIS technology as an essential tool in a broad-range of architectural, planning, sustainable development, and asset management projects. Our experience applying GIS technology includes:

- Land Use Planning
- Military Planning
- Site Investigation/Analysis/Selection
- Entitlement Process
- Emergency Preparedness/Management
- Flood Hazard Mapping
- Environmental Planning/Management

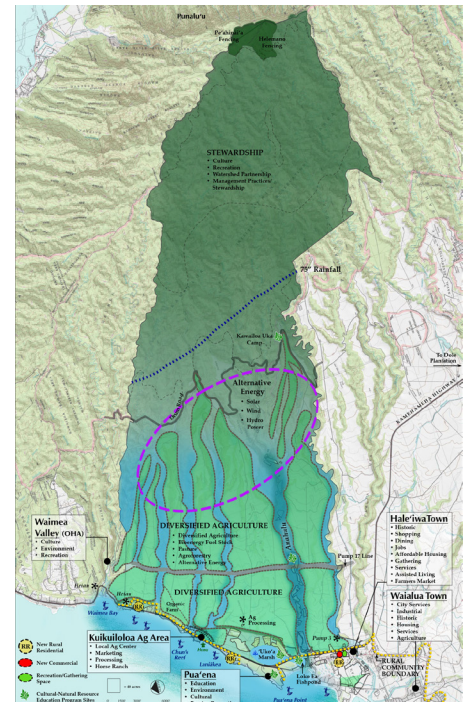
In addition, we provide GIS development for clients requiring needs assessments, requirements analysis, data collection and conversion, application development, geo-database design/creation, mapping, and data modeling and analysis.

At G70 we establish a clear project task that describes how GIS will be applied and support each project. Whether the task is to implement an interactive tool for accessing useful information through online maps or to conduct complex analysis of both geospatial and non-geospatial data, we deliver high quality GIS products to our clients.

Our GIS Services group consists of a multi-disciplinary team of GIS/Geospatial professionals, GIS-trained planners, GIS-trained architects, and GIS-trained graphic designers working across the company as an integrated technology team.



a Kea  
Sight from Kailua Kona



*resumes*

# MARK KĀWIKĀ MCKEAGUE

AICP  
Principal Planner  
Director of Cultural Planning



Kāwika's background, experience, and passion provides a unique and knowledgeable approach to land use planning and cultural resource management. Kāwika effectively administers and advocates a Native Hawaiian perspective in environmental and land use planning, and architectural design and space programming. He brings over 20 years of experience in facilitating local and national level planning efforts for private, public, and non-profit sector clients. His work includes the preparation of Master Plans, Cultural Resource Management Programs, Environmental Impact Studies, and facilitating community dialogue.

## SELECTED PROJECTS:

**Kamehameha Schools -  
He'eia Master Plan**

He'eia, O'ahu

**Kamehameha Schools -  
Cultural Resource Management Plan**

State of Hawai'i

**Kamehameha Schools - North Shore Plan**

Island of O'ahu

**Kamehameha Schools - Natural Resource  
Management Plan Update**

State of Hawai'i

**Kamehameha Schools - Keauhou Bay  
Management Plan**

Keauhou, Hawai'i

**Board of Water Supply - Ko'olau Loa  
Watershed Management Plan**

Windward O'ahu

**Board of Water Supply Hai'iku Stairs**

He'eia, O'ahu

**Office of Hawaiian Affairs - Strategic  
Management Framework for Kaka'ako  
Makai**

Honolulu, O'ahu

**Department of Hawaiian Home Lands &  
Papakōlea Community Development  
Corporation - Native Hawaiian Education  
Cultural Center & Kūpuna Assisted Living  
Center Master Plan**

Puowaina, O'ahu

**Department of Hawaiian Home Lands -  
Ho'olehua Veteran Center - EA, Master  
Plan, CRM**

Ho'olehua, Molokai

**Department of Hawaiian Home Lands -  
Moloka'i Island Plan**

Island of Moloka'i

**Department of Hawaiian Home Lands -  
Waimea Nui Master Plan**

Honolulu, O'ahu

**Department of Hawaiian Home Lands -  
Wai'anae Coast Emergency Access Road/  
Parallel Secondary Access Road**

Wai'anae, O'ahu

**Department of Hawaiian Home Lands -  
Pu'u Opae Special Area & Settlement Plan**

Kekaha, Kaua'i

**University of Hawai'i at Mānoa - Hawaii  
Institute of Marine Biology (Coconut  
Island), Master Plan, LRDP, EIS, CIA**

Kāne'ohe, O'ahu

**Pelekane Bay - EA, Ecological Restoration  
Assessment**

North Kohala, Hawai'i

**Kalaupapa Memorial**

Kalaupapa, Moloka'i

**Mokuhinia and Moku'ula -  
Cultural Landscape & Ecological  
Restoration Plan**

Lahaina, Maui

**Department of Emergency Management  
O'ahu Coastal Communities Evacuation  
Planing Phase I**

Island of O'ahu

**CNMI State Standard Mitigation Plan**

Commonwealth of the  
Northern Mariana Islands (CNMI)

## PROFESSIONAL REGISTRATIONS & ASSOCIATIONS:

American Institute of Certified Planners  
(AICP), Member

Society for Hawaiian Archeology, Member

American Planning Association (APA),  
Member

PA'I Foundation, Board Directors, 2001-  
2003; President, 2003-Present

O'ahu Island Burial Council, Chair;  
Vice-Chair; 'Ewa Moku Representative,  
2005-2012

Hulu Mamo Hawaiian Civic Club, 2012-2013

Native Hawaiian Chamber of Commerce,  
Member

Lambda Alpha International Aloha Chapter,  
Member

## EDUCATION:

NAGPRA, ARPA Application & Requirement  
National Preservation Institute

Hawai'i State Foundation on Culture and the  
Arts, Folk and Traditional Arts Apprentice  
Program

Cyril Lani Pahinui

Section 106: A Review for Experienced  
Practitioners

National Preservation Institute

Consultation and Protection of Native  
American Sacred Lands

National Preservation Institute

Master of Urban and Regional Planning  
University of Hawai'i at Mānoa, HI

Historic Preservation Graduate Certificate  
University of Hawai'i at Mānoa, HI

Identification & Management of Traditional  
Cultural Places

National Preservation Institute

B.A. Political Science

University of Hawai'i at Mānoa, HI

FEMA Certified HURRIPLAN Resilient  
Building Design Coursework

National Disaster Preparedness Training  
Center

## PROJECT HONORS & AWARDS:

Hawai'i Business Magazine - 20 for the Next  
20 Honoree, 2020

Omidyar Fellow, 2019-2020

APA Hawai'i Chapter - Kalaupapa Memorial  
Conceptual Design, Historic Preservation  
Award, 2018

# PAUL T. MATSUDA

P.E., LEED AP  
Principal  
Director of Civil Engineering



Paul Matsuda, P.E., LEED AP is a principal and the Director of Civil Engineering of G70. Paul has more than 20 years of civil engineering experience in a wide variety of site development, transportation and utility infrastructure projects throughout Hawai'i and the Pacific Northwest. He is responsible for management and delivery of the firm's engineering projects and is actively involved in design and project management for many of them. Paul received a Bachelor of Science degree in civil engineering from the University of Washington and is a licensed professional in Hawai'i, Oregon, and Washington.

## SELECTED PROJECTS:

**Department of Hawaiian Home Lands - Waimea Nui**  
Waimea, Hawai'i

**Department of Hawaiian Home Lands - Moloka'i Homesteads**  
Island of Moloka'i

**Department of Hawaiian Home Lands - Lualualei Homestead Subdivision Phase II**  
Lualualei, O'ahu

**Department of Hawaiian Home Lands - Lualualei Homestead Subdivision and Stream Study**  
Lualualei, O'ahu

**Department of Hawaiian Home Lands - Ka'u Water Master Plan**  
Ka'u, Hawai'i

**Department of Hawaiian Home Lands - Wong Farm Subdivision**  
Waimānalo, O'ahu

**Department of Hawaiian Home Lands - Kanakaloloa Cemetery**  
Island of Moloka'i

**Department of Hawaiian Home Lands - Moloka'i Homesteads - Construction Management**  
Island of Moloka'i

**Department of Hawaiian Home Lands - Moloka'i Homesteads - Drainage**  
Island of Moloka'i

**Office of Hawaiian Affairs - 4531 Kuamo'o Road Civil Infrastructure Assessment**  
Kapa'a, O'ahu

**Office of Hawaiian Affairs - Kaka'ako Makai Master Plan**  
Honolulu, O'ahu

**Kamehameha Schools - Palama Uka Camp Master Plan**  
North Shore, O'ahu

**Kamehameha Schools - Hale'iwa Store Lots**  
Hale'iwa, O'ahu

**Kamehameha Schools - Hale'iwa Rural Village Drainage Master Plan**  
Hale'iwa, O'ahu

**Kamehameha Schools - Kapaeloa Cultural Learning Project**  
Hale'iwa, O'ahu

**Kamehameha Schools - Kawaioloa Agribusiness Center Master Plan**  
Kawaioloa, O'ahu

**Kamehameha Schools - Kohou Infrastructure Evaluation**  
Honolulu, O'ahu

**Kamehameha Schools - Kohou Residential Alternatives Study**  
Honolulu, O'ahu

**City & County of Honolulu - Emergency Operations Center**  
Honolulu, O'ahu

## PROFESSIONAL REGISTRATIONS & ASSOCIATIONS:

State of Hawai'i – Professional Engineer (P.E.) Civil #10901

State of Oregon – Professional Engineer (P.E.) Civil #19,250

State of Washington – Professional Engineer (P.E.) Civil #35,943

U.S. Green Building Council (USGBC) - Leadership in Energy and Environmental Design Accredited Professional (LEED AP)

U.S. Green Building Council, Hawai'i Chapter

American Society of Civil Engineers (ASCEH), Member

American Council of Engineering Companies Hawai'i (ACECH), Member

American Water Works Association (AWWA), Member

## EDUCATION:

B.S. Civil Engineering  
University of Washington, WA

*\*Project Work Prior to G70*

# PAUL T. MATSUDA

P.E., LEED AP  
Principal  
Director of Civil Engineering

## SELECTED PROJECTS:

**City & County of Honolulu - Farrington Highway Widening**

Kapolei, O'ahu

**City & County of Honolulu - Honolulu Fire Department Regional Fire Training Center**

Honolulu, O'ahu

**City & County of Honolulu - Honolulu Fire Department Sustainability Study**

Honolulu, O'ahu

**City & County of Honolulu - Street Sign Inventory Database**

Honolulu, O'ahu

**City & County of Honolulu - NPDES Storm Water Public Education**

Honolulu, O'ahu

**County of Kaua'i - Impact Fee Needs Assessment**

Island of Kaua'i

**County of Maui - Wailuku Campus Master Plan**

Wailuku, Maui

**County of Maui - Kalana O Maui Campus Expansion - Phase 1A Office Building**

Wailuku, Maui

**County of Maui - Kalana O Maui Campus Expansion - Phase 1B Parking Structure and Office**

Wailuku, Maui

**Department of Transportation, Harbors Division - Kalaehoa Harbor Fuel Pier Development Plan**

Kalaehoa, O'ahu

**Department of Transportation, Harbors Division - Kalaehoa Harbors Environmental Impact Statement**

Kalaehoa, O'ahu

**Department of Transportation, Harbors Division - Commercial Harbors Civil Engineering Support, Phase 4**  
State of Hawai'i

- **Hilo Harbor Demolition of Quonset Hut, Reconnaissance Level Survey (HRS 6E), Phase 1 Environmental Site Assessment & Mitigation Plan**  
Hilo, Hawai'i Island
- **Hilo Harbor Demolition of Pier 2/3 Shed and Investigation of Sink Holes**  
Hilo, Hawai'i Island
- **Hilo Harbor Expansion of Radio Bay Yard**  
Hilo, Hawai'i Island
- **Hilo Harbor Exemption from Environmental Assessment (HRS 6E) for Demolition of Water Tank & Tower**  
Hilo, Hawai'i Island

**Department of Transportation, Harbors Division - Kalaehoa Harbor Fuel Pier Development Plan**

Kalaehoa, O'ahu

**Department of Transportation, Harbors Division - Kalaehoa Harbors Environmental Impact Statement**

Kalaehoa, O'ahu

**Department of Education - Kīhei High School Water Master Plan and Improvements**

Kīhei, Maui

**Department of Accounting & General Services - Hawai'i Film Studio Various Improvements Phases I & II**

Honolulu, O'ahu

**Department of Accounting & General Services - Kakūanaō'a Renovation**

Honolulu, O'ahu

**Kahuku Agricultural Subdivision**

Kahuku, O'ahu

**Kunia Solar Farm**

Waipahu, O'ahu

**Lunalilo Home Master Plan**

Honolulu, O'ahu

**University of Hawai'i at Manoa - Metcalf Water System Improvements**

Honolulu, O'ahu

**University of Hawai'i at Mānoa - Student Housing Study**

Honolulu, O'ahu

**University of Hawai'i at Mānoa - College of Education Master Plan**  
Honolulu, O'ahu

**University of Hawai'i at Mānoa - Richardson School of Law Outreach Center**

Honolulu, O'ahu

**University of Hawai'i at Mānoa - Webster Hall**

Honolulu, O'ahu

**Hoakalei Resort Master Plan**  
'Ewa, O'ahu

**Royal Kunia Phase II Due Diligence**  
Waipahu, O'ahu

**Hawai'i Pacific University - Aloha Tower Lofts**

Honolulu, O'ahu

**Salvation Army Residence Facilities - Land Use Permitting**  
Honolulu, O'ahu

*\*Project Work Prior to G70*

# STEPHANIE YING SAEPHAN

GISP  
GIS Manager



Ms. Saephan holds a Masters degree in Botany from the University of Hawai'i at Mānoa, and a Bachelor of Arts in Geography from Clark University. She has been working in the GIS field for over 20 years, providing GIS services, including web-based mapping applications, spatial analyses and modeling, training, and needs-assessment for various projects ranging from ecological/conservation to renewable energy and housing/mortgage studies in the research/ academic, government, and corporate environments. Prior to joining G70, Ms. Saephan headed the joint, Botany and the Pacific Cooperatives Studies Unit GIS research lab at UH Mānoa.

## PROFESSIONAL REGISTRATIONS & ASSOCIATIONS:

Certified Geographic Information  
Systems Professional (GISP)

## EDUCATION:

**Masters of Science in Botany**  
University of Hawai'i at Mānoa, HI

**Bachelor of Arts in Geography**  
Clark University, Worcester, MA

## SELECTED PROJECTS:

### O'ahu Coastal Communities Evacuation Planning

Island of O'ahu

### County of Kaua'i - Community Plan GIS

Island of Kaua'i

### City and County of Honolulu NPDES Storm Water Public Education Project

Island of O'ahu

### NAVFAC Hawai'i Natural Resources and Cultural Resources GIS

State of Hawai'i

### U.S. Army Corps of Engineers - West Maui Watershed Study

Island of Maui

### Interisland Cable Web Mapping Application\*

Islands of Lāna'i, Moloka'i, and O'ahu

### University of Hawai'i at Mānoa, School of Architecture - Building Information Modeling Project\*

Honolulu, O'ahu

### Biocomplexity of Avian Malaria on Hawai'i Island\*

Island of Hawai'i

### University of Hawai'i at Mānoa, Botany Dept. and Pacific Cooperative Studies Unit - 3D Modeling of Algal N<sub>15</sub> Plume (Nitrogen-enriched Effluent) Off the West Coast of Maui\*

Island of Maui

### GIS-Based Model to Aid Management of O'ahu's Wetlands\*

Island of O'ahu

### Joint Center for Housing Studies at Harvard University\*

United States

### U.S. Department of Housing and Urban Development Funded Project\*

United States

### Hilo Harbor Improvements - HRS 343 Compliance

Hilo, Hawai'i

*project profiles*

# City & County of Honolulu NPDES Storm Water Public Education Project

## ISLAND OF O'AHU

Development of a comprehensive, island-wide inventory of various industrial facilities using existing databases and tracking tools, mapping and GIS analyses of these facilities to help determine priority areas for annual inspection. Provide a comprehensive public education and outreach plan related the City and County of Honolulu's National Pollutant Discharge Elimination System (NPDES) Municipal Separate Storm Sewer System (MS4) permit. Work involves creating a comprehensive island-wide inventory of various industrial facilities using existing databases and tracking tools, and mapping and GIS analyses of these facilities to help determine priority areas for annual inspection. Additional work also includes using GIS in to assess various urbanized neighbors within 10-15 watersheds to evaluate for potential pollution sources and restoration opportunities in sub-watersheds.

### PROJECT FACTS

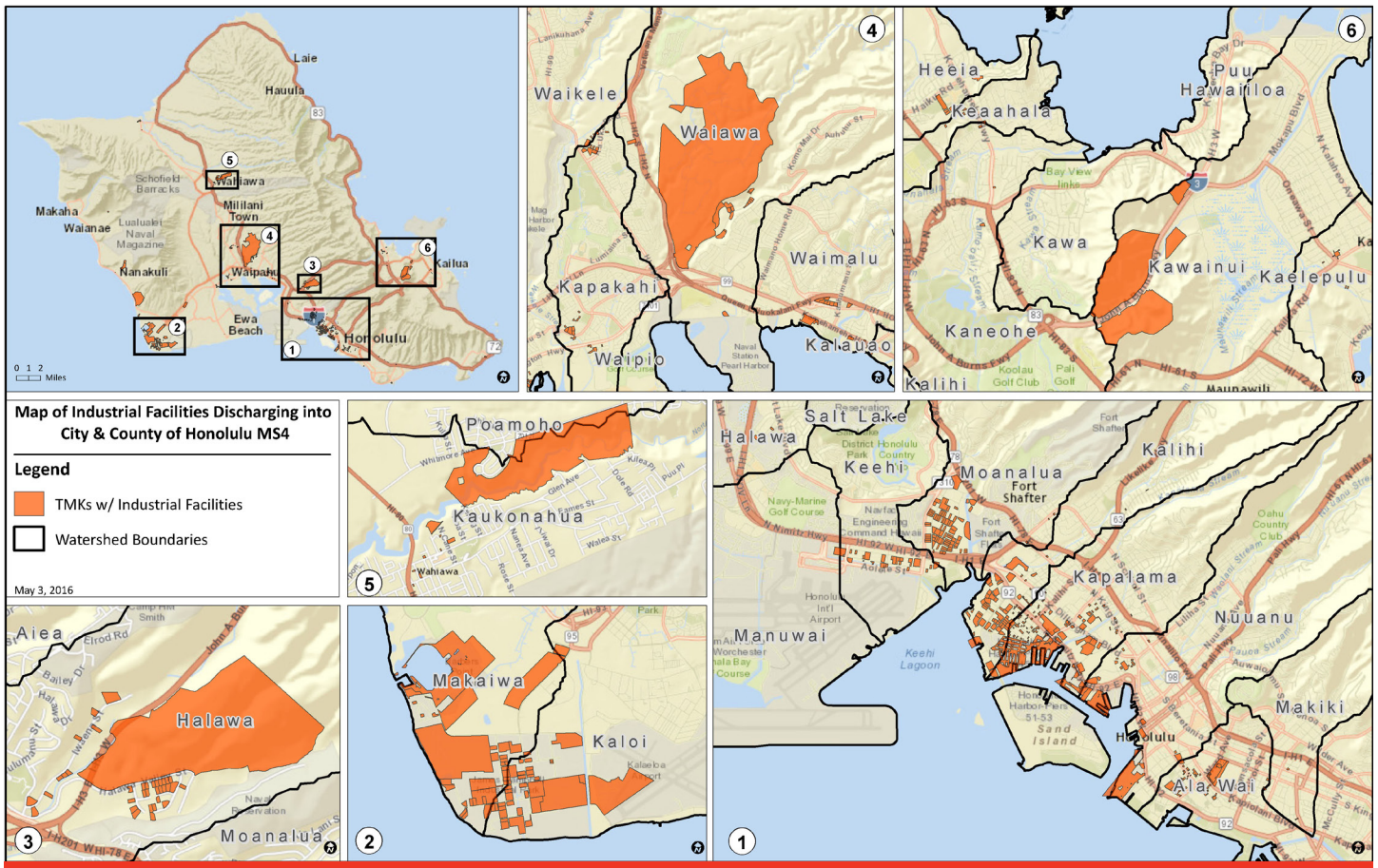
**Client:** City & County of Honolulu

### SERVICES PROVIDED

Industrial Facility Inventory Database

GIS Mapping & Analysis

Public Outreach Booklets & Flyers



# City & County of Honolulu O'ahu Coastal Communities Evacuation Planning

## ISLAND OF O'AHU

G7o teamed with Atkins and the Department of Emergency Management to identify refuge areas and develop evacuation route plans for use in the event of a tsunami warning notification for the City and County of Honolulu. Approximately three-quarters of the island's coastline is included in this project. In addition to working with community groups to identify potential shelters and understand local issues, G7o provided GIS expertise including data collection, GPS field verifications and mapping, and GIS-based refuge capacity analysis.

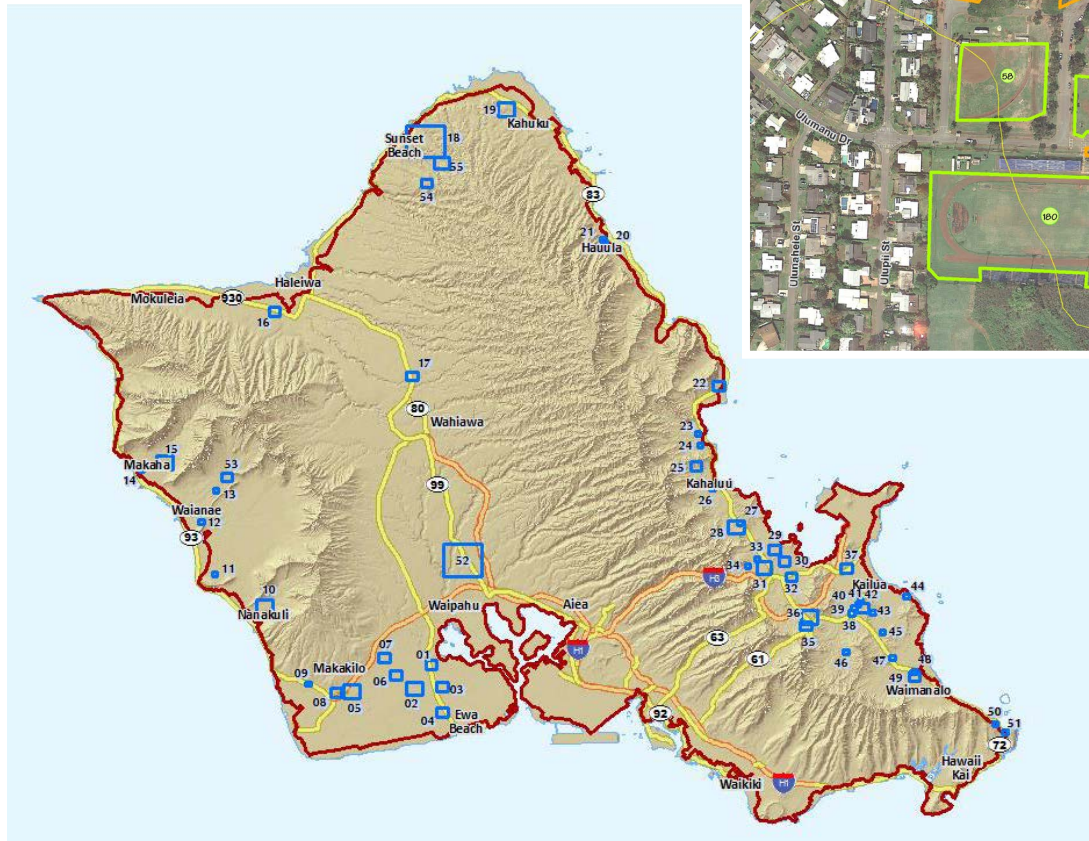
### PROJECT FACTS

**Client:** City & County of Honolulu  
Department of Emergency Management

### SERVICES PROVIDED

Planning & Environment

GIS Mapping & Analysis



# Department of Hawaiian Home Lands Anahola Regional Plan

## ANAHOLA, KAUA'I

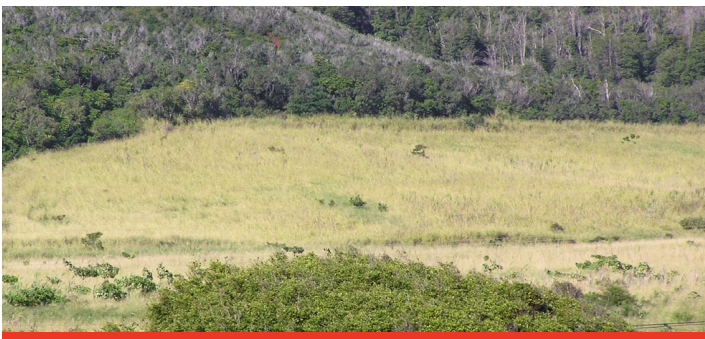
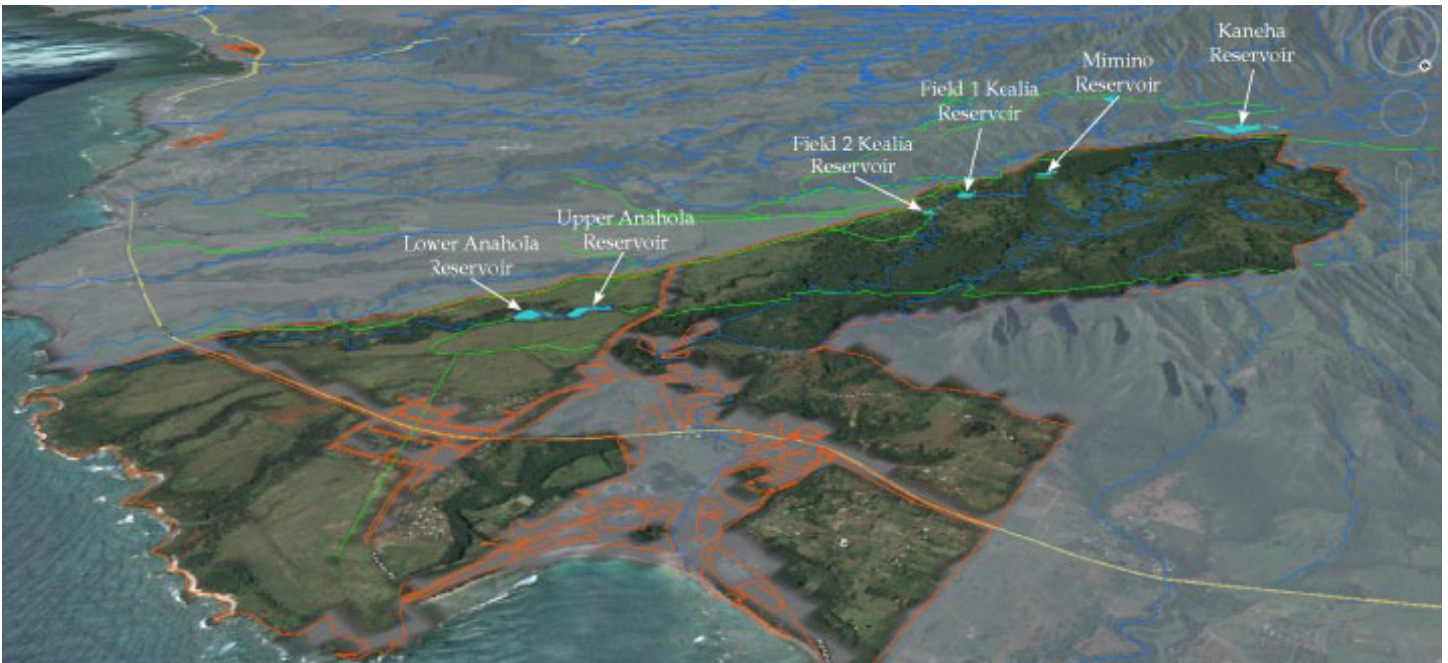
G70 provides integrated technical services for our clients which fully address their individual projects needs. One type of integration is using our Global Positioning Systems (GPS) equipment to collect data that will be used within a Geographic Information System (GIS). During the Regional Planning project for Anahola, Kaua'i the G70 Team completed a GPS data collection effort in conjunction with performing a visual field survey of the Makaha lands of the DHHL Anahola region. The data types collected were focused on unmapped roads, surface water resources, and significant community facilities and resources.

### PROJECTS FACTS

**Client:** Department of Hawaiian Home Lands

### SERVICES PROVIDED

Planning & Environment  
Community Facilitation  
Mixed-Use Planning



# Department of Hawaiian Home Lands Kahikinui Regional Plan

## KAHIKINUI, MAUI

The collection of geospatial data using Global Positioning Systems (GPS) is a key technical service we provide our clients through our Geographic Information Systems (GIS) department. GPS data collection and a regional planning field survey were conducted for the Department of Hawaiian Home Lands (DHHL) in Kahikinui, Maui. G7o collected multiple types of data using handheld GPS units, including unmapped primitive roads and jeep trails, culturally significant sites and archaeological resources, access gate locations, and important regional community locations. This data is processed into the project GIS which is used to perform analysis and produce maps for the Kahikinui Regional Plan.

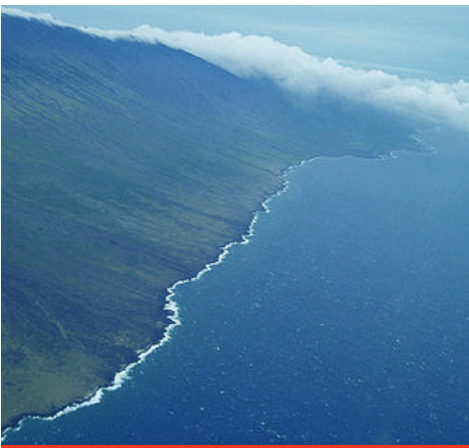
### PROJECT FACTS

**Client:** Department of Hawaiian Home Lands

**Completion:** July 2011

### SERVICES PROVIDED

Planning



# Department of Hawaiian Home Lands Kaua'i Island Plan

## KAUA'I, HAWAII

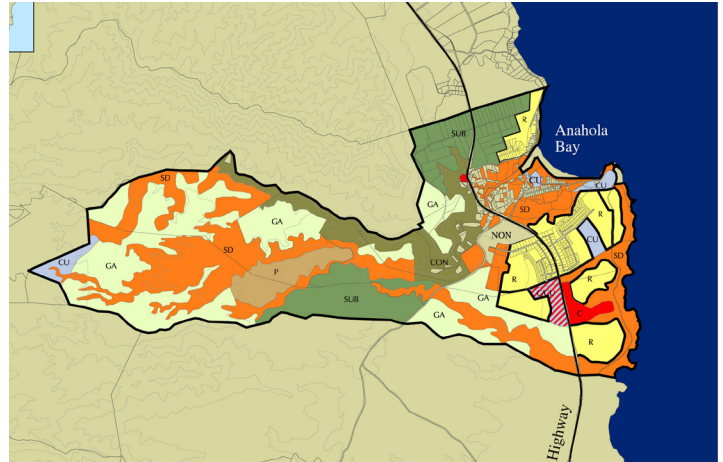
The Kaua'i Island Plan provides recommendations for the future use of 25,565 acres of land. The plan identified priority development areas and preliminary lotting schemes for residential homestead parcels. Work included the development of a Geographic Information System (GIS) tool that formulated a baseline of the environmental, cultural, and socioeconomic features of the land with scenarios for potential land uses. These alternative developments were presented and thoroughly discussed at a series of community meetings before finalizing the Master Plan.

### PROJECTS FACTS

**Client:** Department of Hawaiian Home Lands

### SERVICES PROVIDED

Planning & Environment



# Department of Hawaiian Home Lands Land Inventory

KAUA'I, HAWAII

Through our Geographic Information Systems (GIS) and Geospatial Technologies department we have developed a robust Land Inventory system using GIS for the Department of Hawaiian Home Lands (DHHL). The Land Inventory program at DHHL was established through the Department's Planning Program to supply the U.S. Census with updated land boundaries in a compatible GIS file format for 2010. Once this exercise is complete, the Land Inventory is expanding to include additional applications to support project and asset management activities across the over 200,000 plus acres that make-up DHHL current land holdings statewide.

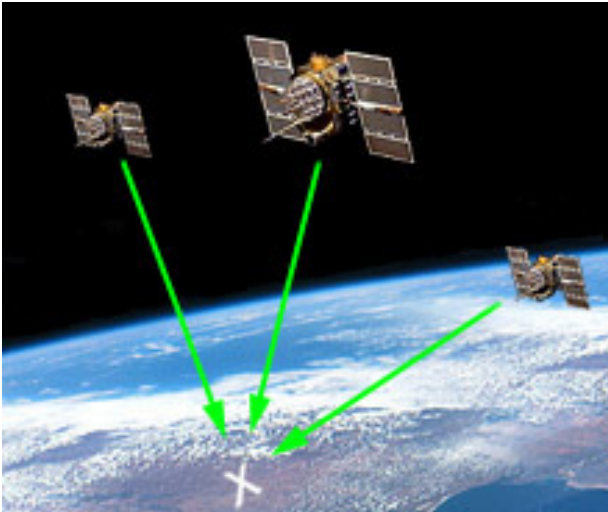
## PROJECTS FACTS

**Client:** Department of Hawaiian Home Lands

## SERVICES PROVIDED

Planning

GIS



# Department of Hawaiian Home Lands Moloka'i Island Plan

## MOLOKA'I, HAWAII

The Moloka'i Island Plan provides recommendations for the future use of 25,868 acres of land, indicating specific areas for prioritizing homestead development. The Master Plan was developed over a 10-month period of reviewing previous land studies and conducting surveys with beneficiaries for their input on lease, location preferences and desired community facilities. The information gathered was analyzed through a Geographic Information System (GIS). GIS formulates a baseline understanding of environmental, socioeconomic and cultural features of land parcels with alternative scenarios for potential land use. These alternatives were presented and thoroughly discussed at a series of community meetings before finalizing the Master Plan.

### PROJECTS FACTS

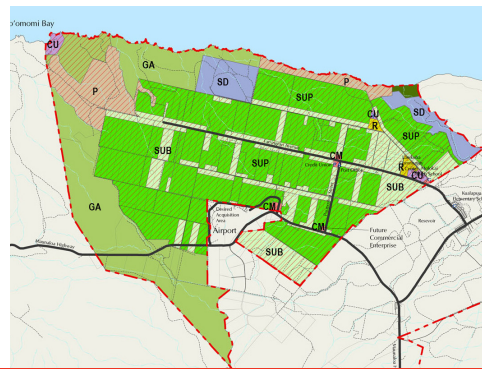
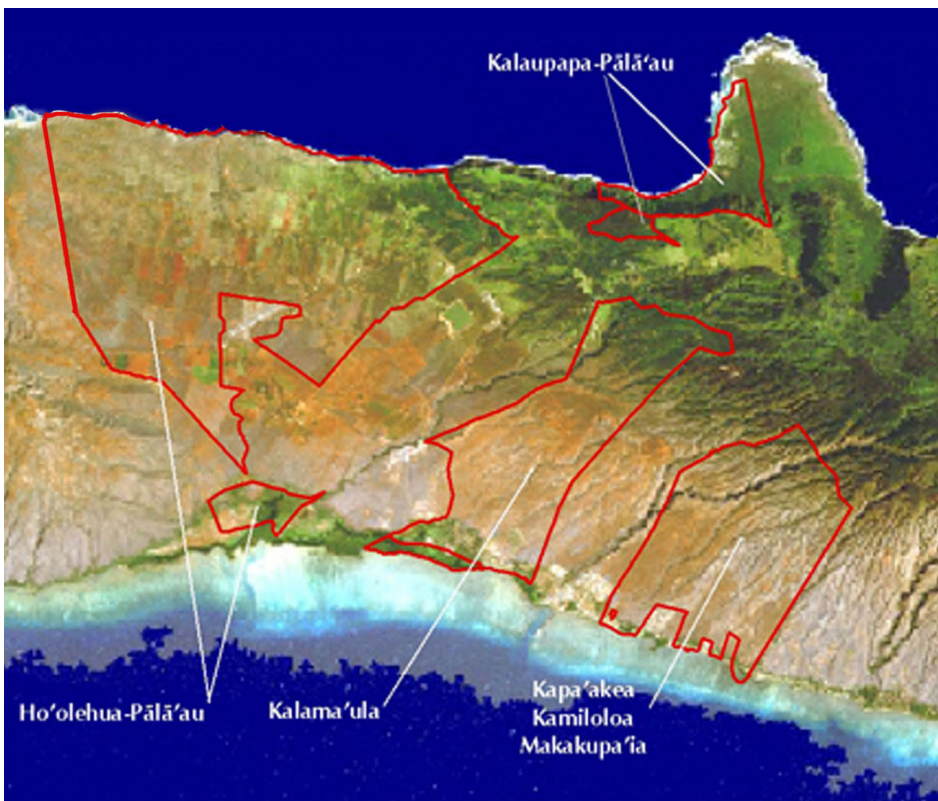
**Client:** Department of Hawaiian Home Lands

**Size:** 25,686 acres

### SERVICES PROVIDED

Planning & Environment

GIS



# Department of Transportation Airports Division Architectural Data Conversion Phases I, II, III

HONOLULU, O'AHU

G70 provided data services migrating GIS/CADD System from MicroStation to AutoCAD for Honolulu International Airport (HNL) Ground Floor Prototype, and created Internal & External and Consultants and Contractors CAD Guideline, coordinate migration process from Old Hawaiian Datum (OHD) to North American Datum 83 High Accuracy Reference Network (NAD83 HARN). Group 70 also provided integration into the Airports Division Geographical Information System (GIS).

## PROJECT FACTS

**Client:** State of Hawai'i Department of Transportation

## SERVICES PROVIDED

Architecture

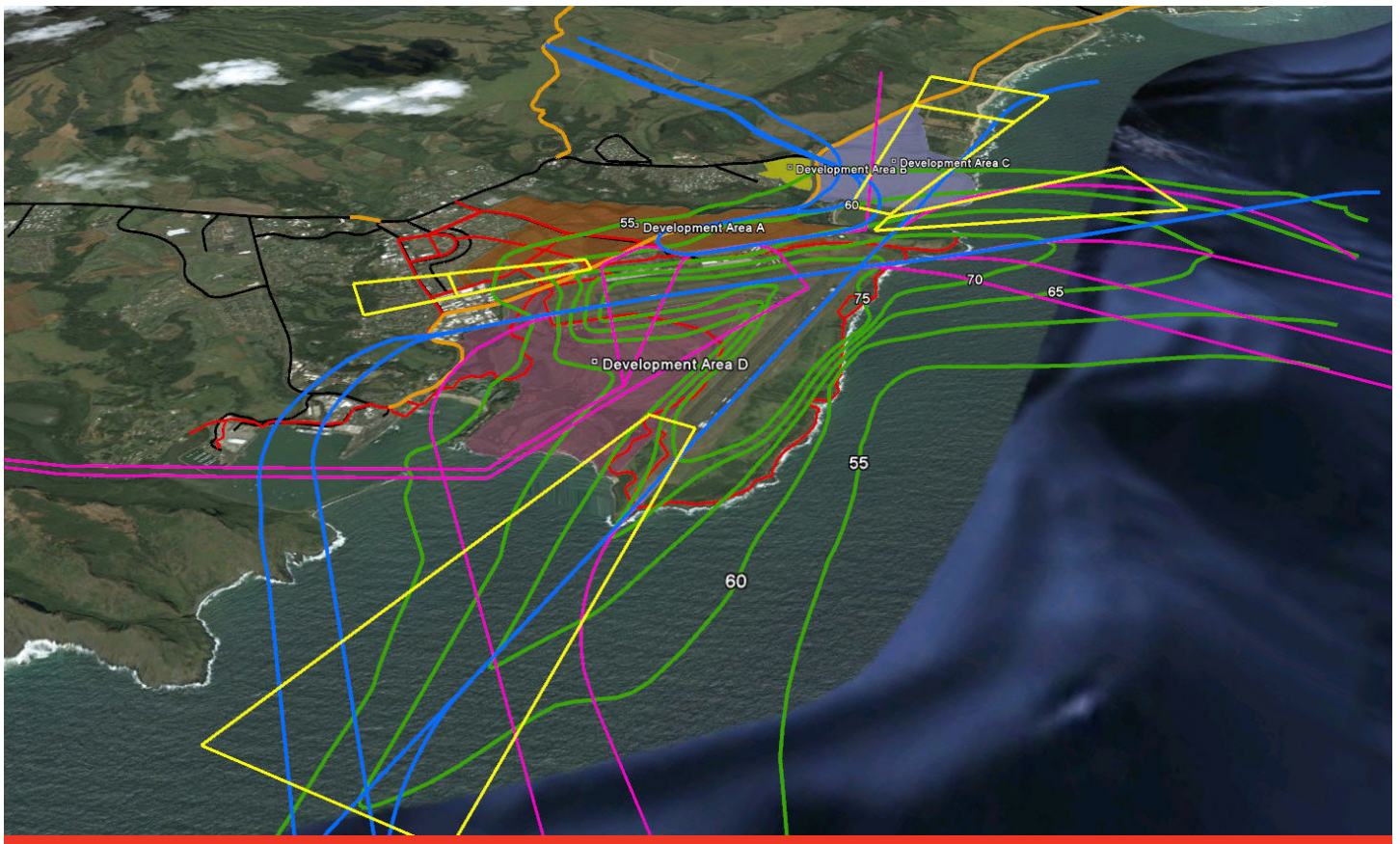
GIS



# State of Hawaii (DOT) Transportation Plan

## STATE OF HAWAII

G7o used Geographic Information Systems (GIS) and geospatial analysis to develop integrated planning scenarios for the Hawai'i Department of Transportation (DOT) State Transportation Plan. This geo-visualization depicts the project planning nexus between the Lihue, Kauai airport (LIH), the Nawiliwili Harbor, road improvement, and new development in the surrounding area. Data layers in analysis included future development areas, approach and departure flight tracks, airport noise contours, and state road improvement projects.



# NAVFAC Hawai'i Natural and Cultural Resources GIS

## O'AHU AND KAUA'I

G70's GIS team inventoried, reviewed, and captured cultural and natural resources data from studies conducted within the Commander Navy Region Hawaii Area of Responsibility (CNRH AOR). Three hundred twenty-one cultural and natural resources reports were inventoried and reviewed; a total of 2,050 natural resources features and 2,569 cultural resources features were captured in two geodatabases that are compliant with the Navy Geospatial Data Model 3.01 (NDM 3.01) metadata standard adapted from the Department of Defense's Spatial Data Standard for Facilities, Infrastructure, and Environment 3.0 (SDSFIE 3.0) geospatial database schema. Efforts included georeferencing and digitizing features from historical and contemporary surveys, establishment of workflow processes, training for archaeologists and natural resources specialists, and documentation of the workflow and training. With this tool, archaeologists and natural resources specialists will be able to access, via the Navy's GRX, all past studies and relevant findings that may impact a current proposal for use of a specific location.

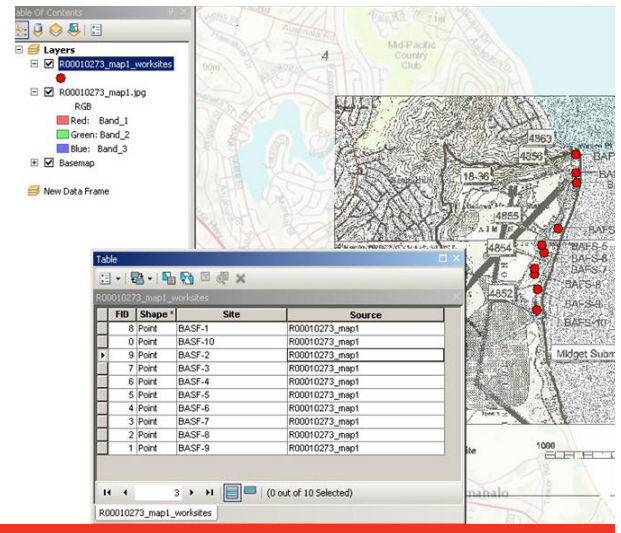
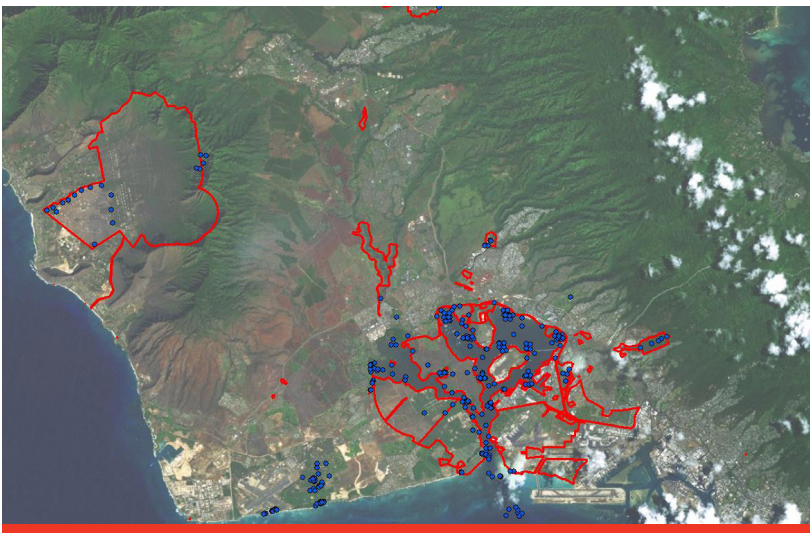
### PROJECT FACTS

**Client:** NAVFAC Hawai'i

### SERVICES PROVIDED

Planning & Environment

GIS Mapping & Analysis



# South Kona FEMA Flood Hazard Study

## KONA, HAWAI'I

G7o and its team of consultants prepared hydrologic and hydraulic models/calculations to identify the 10-, 25-, 50-, 100-, and 500- year flood plains and 100-yr floodway, within the flood hazard study area of the South Kona District. Using standardized GIS applications, flood hazard mapping was developed which the County of Hawai'i will use amend the Federal Emergency Management Agency's (FEMA) Flood Insurance Rate Maps. As part of this project LIDAR (Light Detection and Ranging) survey mapping was completed for tiled grids from the coastline to approximately elevation 3,600 feet mean sea level.

### PROJECT FACTS

**Client:** State of Hawai'i DLNR

### SERVICES PROVIDED

Planning  
GIS



# U.S. Army Corps of Engineers West Maui Watershed Study

## WEST MAUI, MAUI

Watershed plans were developed to in an effort to reduce pollutant impacts on West Maui's coral reefs. The *Kahana, Honokahua and Honolua Watersheds Characterization Report* identifies existing watershed conditions and the *Kahana, Honokahua and Honolua Watersheds Strategies and Implementation Report* recommends policies and management measures for the urban, agriculture and conservation areas of the three watersheds. The plans were developed with a multi-agency government team and the local West Maui Ridge to Reef Working Group.

### PROJECT FACTS

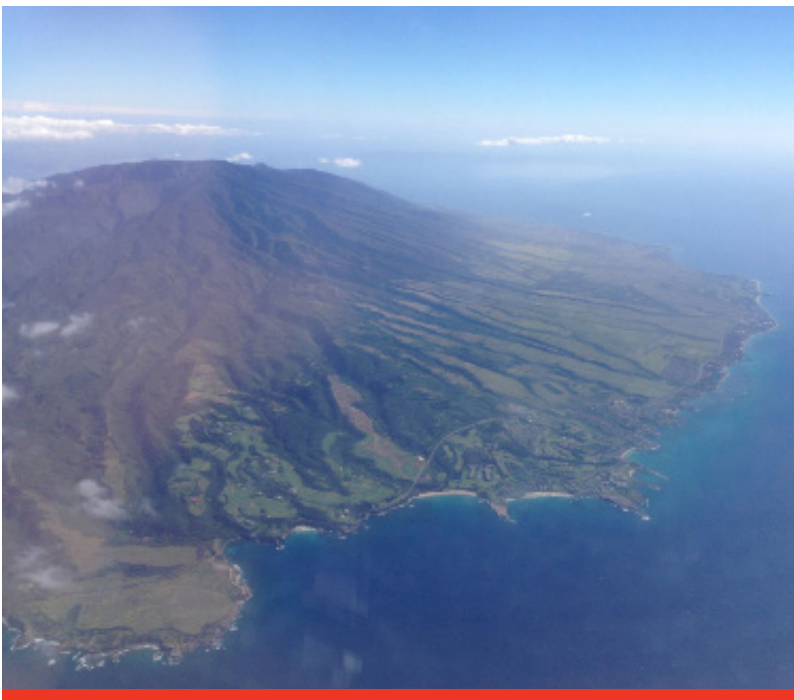
**Client:** U.S. Army Corps of Engineers

**Size:** 12,000 acres

### SERVICES PROVIDED

Watershed Management Planning

GIS Mapping & Analysis





111 S. King Street, Suite 170  
Honolulu, HI 96813  
808.523.5866  
[www.g70.design](http://www.g70.design)