

County of Hawai'i

Civil Defense

NOTICE TO PROVIDERS OF PROFESSIONAL SERVICES
for fiscal year 2023-2024, beginning July 1, 2023

**Letter of Interest and Statements of Qualifications for
CD.3) Safety Engineering/General Physical Science**
(Emergency Management)

Prepared for:
Mr. Talmadge Magno, Civil Defense Administrator
County of Hawai'i
920 Ululani Street
Hilo, Hawai'i 96720

June 30, 2023



letter of interest



111 S. King Street
Suite 170
Honolulu, HI 96813
808.523.5866
www.g70.design

June 30, 2023

Mr. Talmadge Magno, Administrator
Civil Defense
County of Hawai'i
920 Ululani Street
Hilo, HI 96720

**Subject: Statement of Qualifications & Letter of Interest
Civil Defense, County of Hawai'i for Fiscal Year 2023-2024**

Dear Mr. Magno:

G70 is pleased to express interest in providing professional services to the Civil Defense for the Fiscal Year 2023-2024 in the following categories:

CD.3) Safety Engineering / General Physical Science (Emergency Management)

Established in 1971, G70 is Hawai'i's largest full service multi-discipline design firm providing integrated services for sustainable development in architecture, civil engineering, planning and environment, geographic information systems, technology, and interior design. Our team brings a collective high level of talent unique in our approach and broad thinking from typical engineering firms. G70's team will:

- ✓ **Create Value** – understanding our client, culture and community to design innovative solutions that deliver a successful project on time, and on budget.
- ✓ **Provide a “One Stop Shop” of Skilled Professionals** - collaborative and multidiscipline team of professionals including engineers, planners, architects, interior designers, information technologists, cultural specialists, software engineers, GIS technicians, graphic designers, asset managers, and communications personnel.
- ✓ **Be Culturally Relevant in Design and Project Management** – years of experience and involvement with the local culture, community and government agencies allow us to deliver successful projects.
- ✓ **Promote Sustainable Principles** – delivering solutions that consider the context of the project using a cross discipline, life cycle perspective to integrate and protect resources and the community.
- ✓ **Leverage Technology** – knowledge and ability to utilize technological tools to provide efficient and valued added service.

1. The name of the firm or person, contact information including email address, the principal place of business, and location of all of its offices:

Name of firm: Group 70 International dba G70
Firm Address: 111 S. King Street, Suite 170
Honolulu, HI 96813

Contact Person: Mark Kāwika McKeague, AICP, Principal Planner
Email Address: kawikam@g70.design
Phone number: (808) 523-5866

2. The age of the firm and its average number of employees over the past five years:

G70 was founded in 1971. We have averaged 100 employees over the past five years and we currently have 107 employees.

3. The education, training, and qualifications of the individual, or if a firm, its key employees in accordance with HRS 103D-304 and/or the professional and scientific occupation series contained in the United States Office of Personnel Managements' Qualifications Standards Handbook:

Please see Resumes of Key Personnel

4. A list of recent projects and the names of up to five clients who may be contacted, including at least two for whom services were rendered during the preceding year:

- State of Hawai'i Department of Transportation CAD Migration
- CNMI State Standard Mitigation Plan
- DHHL Census Assistance and Land Inventory
- City & County Road Maintenance Software
- Hawai'i MRS Japan Civil Aviator Bureau
- Alapai Joint Traffic Management & Emergency Operations Center
- Chanta'an, Pongsona Post Storm Assessment
- City and County of Honolulu Oahu Coastal Evacuation Planning
- City and County of Honolulu Emergency Operations Center
- CNMI Emergency Operations Center

Client References		
Name	Organization	Phone Number
Ms. Catherine Taschner	City and County of Honolulu – Department of Land Management	(808) 768-4271
Mr. Andrew Choy	Hawai'i State Department of Hawaiian Home Lands, Hawaiian Homes Commission, Planning Office	(808) 620-9279
Mr. John R. Condrey	City and County of Honolulu - Facilities Division, Department of Design & Construction	(808) 768-8468
Mr. Milton Yoshimoto	U.S. Army Corps of Engineers	(808) 835-4004
Mr. Barry Usagawa	City and County of Honolulu, Honolulu Board of Water Supply	(808) 748-5900

5. Any promotional or descriptive literature which the individual or firm desires to submit.

We have provided supporting data for G70 to include:

- Company Profile
- Key Personnel Resumes
- Project Profiles

Civil Defense, County of Hawai'i
LOI and SOQ for Fiscal Year 2023-2024
June 30, 2023
Page 3 of 3

We appreciate your consideration of our firm for the above listed category. Should you have any questions, please contact me at (808) 523-5866 or by email at kawikam@g70.design.

Sincerely,

A handwritten signature in black ink, appearing to read 'Mark Kāwika McKeague', with a long horizontal flourish extending to the right.

Mark Kāwika McKeague, AICP
Principal Planner

company profile

about g70

FULL SERVICE

Established in 1971, G70 is Hawai'i's largest full service multi-disciplined design firm providing integrated services for sustainable development in architecture, interior design, civil engineering, and planning & environmental services. We have specific expertise in design for resort communities, residential projects, educational and medical facilities, mixed-use commercial ventures, utilities and roadway infrastructures, and all phases of master planning for major land holdings.

CREATING VALUE

Based in Honolulu, G70 is staffed with over 100 full-time professionals, including: licensed architects, interior designers, civil engineers, planners, technical specialists, and other support personnel. The firm is on the forefront of sustainable design practices with 33 LEED (Leadership in Energy and Environmental Design) accredited professionals in all areas of service.

CULTURALLY RELEVANT

G70 is about stewardship. Our work begins with understanding our client, the host culture of each project, and the surrounding community. We work with communities to create designs that not only best serve the people, but also incorporate the cultural, historical and environmental aspects of the land.

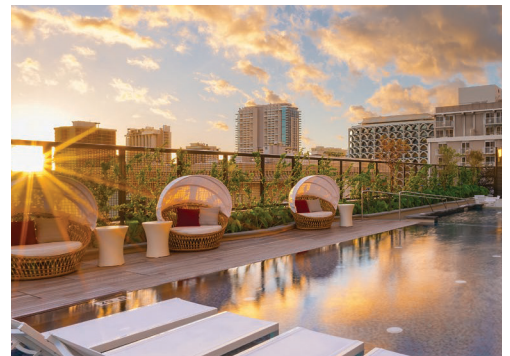
SUSTAINABLE DESIGNS

Sustainable principles cross all disciplines in project development from planning to design, integrating land resource management and cultural heritage with cutting edge sustainable technology. G70 offers sustainable design methods and tools to plan, build, and monitor the utilities and infrastructure of a project site. We provide asset management resources to maintain, secure, and optimize operating costs for land owners and developers.

TECHNOLOGY

G70 is progressive in its use and application of design software to enhance visualization and bring efficiency to the design process. Our current list of software being utilized is:

- Revit 2018, 2020
- Dynamo Revit
- AutoCad 2018, 2020
- SketchUp Pro 8
- Photoshop
- Illustrator
- InDesign
- Rhino 5 5
- BIM 360
- Google Earth Pro
- Grasshopper Arc GIS
- Lumion 6.0
- Civil 3D 2018, 2020
- Arc GIS
- Infracore
- Formlabs



G70 services

ARCHITECTURE

G70 designs architecture that represent the lifestyles of communities and respect the natural landscape surrounding each project. Our emphasis on cultural context, honoring traditional values, combined with contemporary innovation and planning of sustainable environments creates harmonious, memorable designs for our future.



CIVIL ENGINEERING

Civil Engineering Consulting Services include the full range of services for a civil consulting firm. Our capabilities are broadened significantly with the overlapping services and abilities of G70, including Planning and Environmental Services, Land-Use Permitting, Architecture, Sustainable Development, GIS and Geospatial Services, and Asset Management.



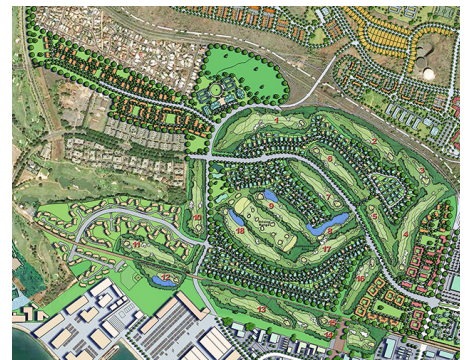
INTERIOR DESIGN

We believe that interior spaces should have a timeless quality and compliment the architectural style of its environment. Our team includes architects specializing in interior design. We offer custom designed finishes, furniture and architectural elements that offer signature details to enhance our client's individual style.



PLANNING & ENVIRONMENT

G70 provides comprehensive services to meet the challenges in the planning of communities, regions and the preservation of land resources. We engage the community in the process, assess the land, and prepare the necessary documents to expedite the due diligence process in a timely manner.



sustainable design

APPROACH

HONOR & INTEGRATE

With a deep understanding of an area's culture, heritage, and history at the onset of the design process, G70 is able to create distinctive, award-winning environments, richly appealing, harmonious and increasing in value over time. This is the foundation of good planning and design.

RESPECT & UNDERSTAND

We are committed to sustainable design principles, approaching each project with in-depth research of the site, to understand its environmental context, geological and topographical features, wind and solar characteristics, and historical and cultural background. We provide innovative GIS and 3D visualization to assist in planning, design and decision making.

PLAN & MAINTAIN

G70 offers sustainable design methods and tools to plan, build, and monitor the utilities and infrastructure of a project site. With GIS capabilities and state-of-the-art software, we provide asset management resources to maintain, secure, and optimize operating costs for developers.

LEAD FUTURE DESIGN

Our mission is to foresee a sustainable future now: to initiate, plan, design and build the best-in-class projects that demonstrate leadership in the global sustainability theater.



sustainable design

INNOVATION

EXPERTISE

G70 is on the cutting edge of sustainable development, recognizing the importance and impact of built environments of all types and sizes on individual lives, whole communities, and the entire planet. The firm's resources include a growing number of in-house LEED AP architects, planners, and interior designers working strategically with our clients and partners.

LEED SERVICES

- Pre-evaluation: identifying economically viable LEED compliance
- Certification: processing and documenting a project through design and construction
- Post-Certification: providing project asset management to ensure long term performance
- Water Efficiency Improvement Assessment
- Credit Products & Technologies Specification
- Credit Innovation & Design programming

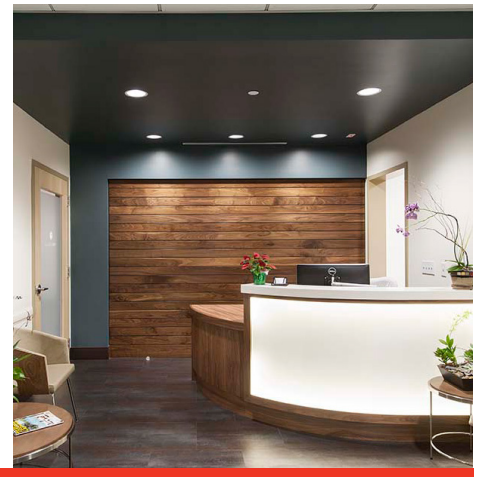
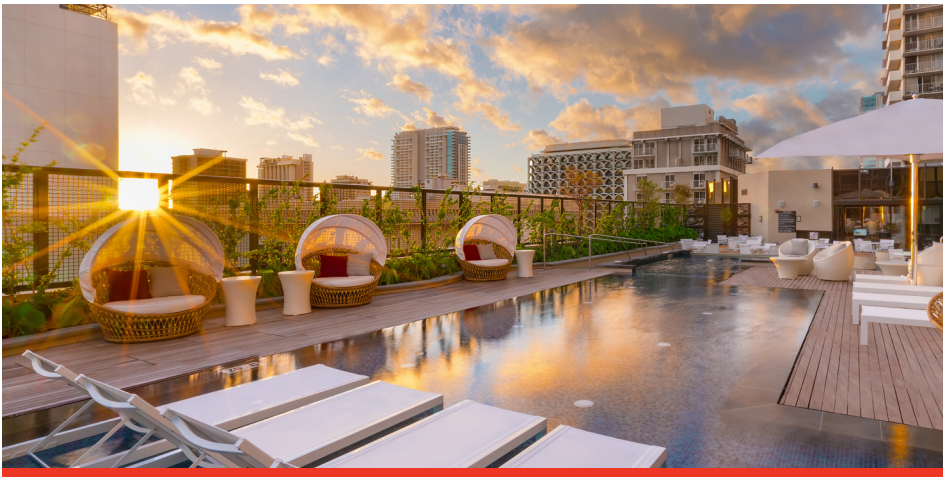
ACCOUNTABILITY

Our Sustainable Development Division created a proprietary methodology to map specific LEED components such as potable water consumption, graywater utilization, energy consumption, carbon footprint, waste generation, and open space. Following certification, G70 will monitor the ongoing performance of LEED certified projects. This innovative process ensures that the LEED building performs as designed throughout its life.



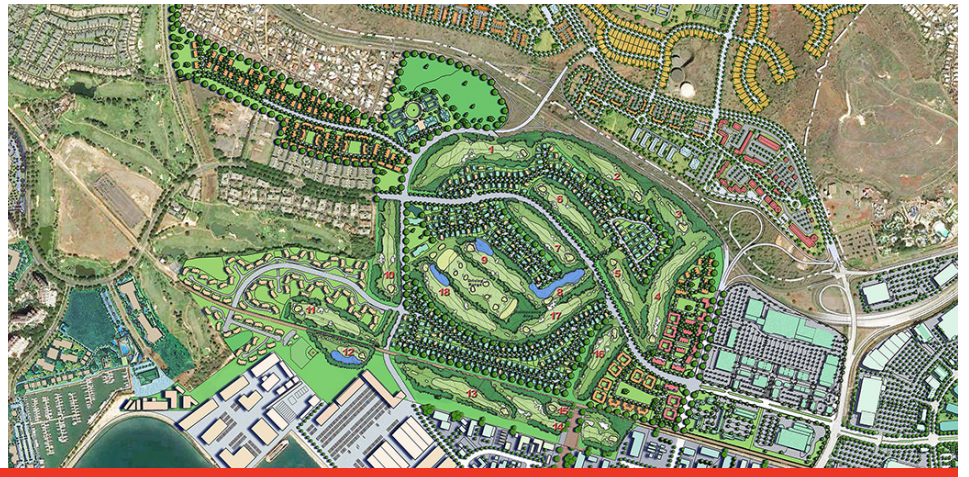
select client list

- A & B Properties, Inc.
- Actus Lend Lease, LLC
- Aeko Hawai'i
- American Savings & Loan Association
- Amfac Corporation
- Armstrong Builders
- Azabu USA Corporation
- Bank of America
- Bank of Hawai'i
- BHP Gas Company
- Black River Energy, LLC
- Blackacre Institutional Capital Mgt, LLC
- Blackstone
- Brookfield Homes Hawai'i, Inc.
- California Institute of Technology
- Chaminagde University of Honolulu
- Chartres Lodging Group, LLC
- City and County of Honolulu
- CM&D International, Inc.
- Coconut Plantation Holdings, LLC
- Consuelo Foundation
- County of Hawai'i
- Daiei USA
- Department of Business, Economic Development & Tourism
- Department of Defense Education Activity (DoDEA)
- State Department of Transportation Airport Division
- State of Hawai'i Department of Hawaiian Home Lands (DHHL)
- State of Hawai'i Department of Land & Natural Resources (DLNR)
- Dole Foods, Incorporated
- Elleair Hawai'i, Inc.
- First Hawaiian Bank
- Forest City
- Flintridge Partners
- Gay & Robinson, Inc.
- Government of French Polynesia
- Grosvenor International
- Halekulani
- Haseko (Hawai'i), Inc.
- Hawai'i Baptist Academy
- Hawai'i Reserves, Inc.
- Hawai'i Pacific Health
- Hawaiian Electric Industries
- Hawaiian Telephone Company
- Hilton Worldwide
- Hilton Grand Vacation Club
- Hōkūli'a
- Honolulu Board of Water Supply
- Host Hotels and Resorts, Inc.
- Hunt Building Company, Ltd.
- Hyatt Vacation Ownership, Inc.
- 'Iolani School
- Iwasaki Group, Japan
- JRANSA
- Kaiser Permanente Hawai'i
- Kamehameha Schools
- Kāne'ohe Ranch Co. Ltd.
- Kapalua Land Company
- Kapolei Property Development, LLC
- Kaua'i County
- Kaua'i Economic Development Board
- Kaua'i Community Federal Credit Union
- Ke Kailani Development, LLC
- Kisco Senior Living
- Kona Heights, LLC
- Kuakini Medical Center
- Kualoa Ranch



select client list

- Kuilima Development Company
- Kyo-ya Company, Ltd.
- Landmark Hotels
- Lockheed Martin
- Marianist Center of Hawai'i
- Marine Corps Forces, Pacific (MARFORPAC)
- Marriott Corporation
- Marriott Vacation Club International
- Maui County
- Maui County Employees Federal Credit Union
- Maui Land and Pineapple Co.
- Metropolitan Life Insurance Co.
- Monarch Group
- NAVFAC Pacific
- NEC Telenetwox, Ltd.
- Obayashi Hawai'i Corporation
- Oceanic Properties, Incorporated
- Oceanside Partners
- Otaka Corporation
- Outrigger Enterprises
- Pacific Resources, Incorporated
- PacMar, Incorporated
- Po'ipu Beach Villas, LLC.
- Princess Hotels International, Inc.
- PRM Realty, Inc.
- Prudential Real Estate
- Sentul City
- Shimizu Corporation
- Shin Yang Co., Malaysia
- Shipman Company
- Shiraishi Shokai, Okinawa
- Southern Pacific Communications
- Starwood Capital Group, LLC
- Systems International, Inc., Japan
- The Contemporary Museum
- The Estate of James Campbell
- The Queen Emma Foundation
- The Queen's Health Systems
- The Resort Group
- The Resort Partners
- The Salvation Army
- Theo H. Davies Properties, Inc.
- Tosei Shoji, Incorporated, Japan
- Tri-Mark Pacific Homes
- UH Institute of Astronomy
- University of Hawai'i
- University of Hawai'i Federal Credit Union
- University of the Nations
- US Army Corps of Engineers
- VMS Realty, Incorporated
- Victoria Ward Limited
- Wai'alae Country Club
- Woodridge Capital



honors & awards

Central Union Preschool & Kindergarten Phase I

- National Association of Industrial and Office Properties (NAIOP) Hawai'i Nonprofit Kūkulu Hale Award, 2013

Department of Accounting and General Services No. 1 Capital Place Exterior Renovation (Hemmeter Building)

- Historic Hawai'i Foundation (HHF) Preservation Award, 2019

Department of Hawaiian Home Lands Kaupuni Village

- American Institute of Architects (AIA) Mayor's Choice Award, 2011
- United States Green Building Council (USGBC) Outstanding Green Project Team Award, 2011
- American Planning Association (APA), Innovation In Planning: Best Practices for Sustainability Award, 2010

G70 Interiors Office

- American Society of Interior Designers (ASID) Overall Grand Design Award, 2006
- American Society of Interior Designers (ASID) Commercial Design Award of Excellence, 2006
- American Society of Interior Designers (ASID) Green Sustainable Design Award of Excellence, 2006
- Building Industry of Hawai'i (BIA) Overall Grand Award, 2006
- Building Industry of Hawai'i (BIA) Built Green Grand Award, 2006
- National Association of Industrial and Office Properties (NAIOP) Hawai'i Renovation Kūkulu Hale Award, 2006

G70 First & Second Floor Sustainable Renovations

- Historic Hawai'i Foundation (HPH) Preservation Commendation Award, 2010

Guam USMC Installation Appearance Plan

- American Society of Landscape Architects (ASLA) Planning & Analysis Honor Award, 2012

Hanauma Bay Nature Preserve

- American Planning Association (APA) Hawai'i Outstanding Planning Project, 2004
- American Institute of Architects (AIA) Honolulu Award of Merit, 2003
- National Association of Industrial and Office Properties (NAIOP) Hawai'i Award of Merit, 2003
- Building Industry of Hawai'i (BIA) Renaissance Award, 2003
- Hawai'i Tourism Authority (HTA) Keep it Hawai'i Kahili Award, 2003

Hawai'i Baptist Academy

- American Institute of Architects (AIA) Honolulu Mayor's Choice Award, 2007
- Building Industry of Hawai'i (BIA) Grand Award Hawai'i BuiltGreen, 2007
- National Association of Industrial and Office Properties (NAIOP) Hawai'i Kūkulu Hale Award, 2007

Hawai'i Baptist Academy High School - Phase I

- General Contractors Association (GCA) Award of Merit, 2014
- American Institute of Architects (AIA) Honolulu Merit Award, 2014



honors & awards

Hale Ola, Wailea

- American Society of Interior Designers (ASID) Award of Excellence, 2004

Hale Pu'u, Wailea

- American Society of Interior Designers (ASID) Award of Excellence, 2004

Harry and Jeanette Weinberg Ho'okupu Center

- International Interior Design Association (IIDA) Hawai'i Serve Award, 2019

Hawai'i State Art Museum Sculpture Garden

- Historic Hawai'i Foundation (HPH) Preservation Honor Award, 2014
- American Institute of Architects (AIA) Honolulu Mayor's Choice Award, 2013
- National Association of Industrial and Office Properties (NAIOP) Hawai'i Public/Government Renovation Kūkulu Hale Award, 2013
- American Society of Landscape Architects (ASLA) Honolulu Award of Excellence, 2012

Hilton Grand Waikikian

- American Resort Development Association (ARDA) ACE Project of Excellence Award, 2010
- Waikiki Improvement Association (WIA) Ho'owehiwehi Nui Award, 2009

Hilton Hokulani Waikiki

- General Contractor Association (GCA) Award of Excellence - Building Construction, 2014

Hilton Waikoloa Kings Land Phase I

- American Resort Development Association (ARDA) Award of Green Sustainability Program Within a Resort, 2012

Hilton Waikoloa Kings Land Clubhouse

- American Society of Heating, Refrigerating & Air-Conditioning Engineers (ASHRAE) 1st Place, Region X, Technology Award, 2011

Holo Holo Ku Residential Condominiums

- American Institute of Architects (AIA) Honolulu Mayor's Choice Award, 2004
- Building Industry of Hawai'i (BIA) New Residential Division Award, 2004

HPU Waterfront Lots at Aloha Tower Marketplace

- National Association of Industrial and Office Properties (NAIOP) Hawai'i Renovation Kūkulu Hale Award, 2016

Hyatt Centric Waikiki Beach

- National Association of Industrial and Office Properties (NAIOP) Hawai'i Renovation Kūkulu Hale Award, 2017

'Iolani School Phase I

- National Association of Industrial and Office Properties (NAIOP) Hawai'i New Project Kūkulu Hale Award, 2005
- Building Industry of Hawai'i (BIA) Grand Award, 2004
- American Society of Interior Designers (ASID) Design Awareness Award, 2004
- General Contractor Association (GCA) Award of Excellence, 2004
- Building Industry of Hawai'i (BIA) Renovation Project of the Year, 2002
- National Association of Industrial and Office Properties (NAIOP) Hawai'i New Project Kūkulu Hale Award, 2002



honors & awards

'Iolani School K-1 Community

- American Institute of Architects (AIA) Honolulu Award of Merit, 2020
- American Institute of Architects (AIA) Honolulu People's Choice Award, 2020

'Iolani School Residence Hall

- American Institute of Architects (AIA) Honolulu Award of Merit, 2019
- General Contractors Association (GCA) of Hawaii Award of Excellence, 2020

'Iolani School Sullivan Center

- National Association of Industrial and Office Properties (NAIOP) Hawaii's New Project Green Building Kūkulu Hale Award, 2014
- General Contractor Association (GCA) Award of Excellence - Design-Build/Design-Assist Construction, 2014
- International Interior Design Association (IIDA) Hawaii's Award of Merit, 2014
- American Institute of Architects (AIA) Honolulu People's Choice Award, 2014

Japengo - Hyatt Regency Resort & Spa

- Building Industry of Hawaii's (BIA) Renaissance Commercial Remodel Award, 2011

Kailani at Ko Olina Housing

- Hawaiian Electric Company (HECO) Energy Efficiency Award, 2002
- Parade of Homes First Place Winner, 2002

Kailua Community Planning

- American Planning Association (APA) Renovation Project of the Year, 2002



Kalihi Valley Homes Phase I Renovation

- American Institute of Architects Pacific NW Region (AIA NW) Award of Merit, 2003
- American Institute of Architects (AIA) Honolulu Award of Merit, 2002
- Building Industry of Hawaii's (BIA) Renaissance Commercial Remodel Award, 2011
- National Association of Industrial and Office Properties (NAIOP) Hawaii's Renovation Project of the Year Kūkulu Hale Award, 2002

Kamakana Villages at Keahuolu

- American Planning Association (APA) Outstanding Planning Award, 2011

Kamehameha Schools Cultural Resource Management Plan

- American Planning Association (APA) Environmental / Preservation Award, 2013

Kamehameha Schools Hale'iwa Store Lots

- National Association of Industrial and Office Properties (NAIOP) Hawaii's Renovation Kūkulu Hale Award, 2017
- American Council of Engineering Companies (ACEC) Hawaii's Engineering Honor Award, 2016
- American Planning Association (APA) Hawaii's Historic Preservation Award, 2015

Kamehameha Schools Hawaii'i Campus

- National Association of Industrial and Office Properties (NAIOP) Hawaii's Non-profit Kūkulu Hale Award, 2009



honors & awards

Kamehameha Schools Maui Campus

- National Association of Industrial and Office Properties (NAIOP) Hawai'i National Planning Excellence Award for Innovation in Sustaining Places, 2011

Kamehameha Schools North Shore O'ahu Master Plan

- American Planning Association (APA) National Planning Excellence Award for Innovation in Sustaining Places, 2011
- American Planning Association (APA) Outstanding Planning Award, 2008

Kaua'i Community Federal Credit Union

- National Association of Industrial and Office Properties (NAIOP) Hawai'i New Non-Profit Project Award, 2012

Kauna'oa Country Club

- Building Industry of Hawai'i (BIA) Grand Award New Commercial, 2007

King Kamehameha Kona Beach Hotel

- National Association of Industrial and Office Properties (NAIOP) Hawai'i Renovation Kūkulu Hale Award, 2011
- American Society of Interior Designers (ASID) Award of Honor, 2010

Koloa Landing Resort & Spa

- General Contractor Association (GCA) Award of Excellence - Building Construction, 2014

Kuhio Park Terrace

- American Institute of Architects (AIA) Honolulu Mayor's Choice Award, 2010

Laiopua 2020 Community Center

- American Planning Association (APA) Hawai'i Community-Based Planning Award, 2008



Lyon Arboretum

- American Planning Association (APA) Hawai'i Preservation Award, 2006

Maui Ocean Club Timeshare Conversion

- Hawai'i Green Business Award for Outstanding Efforts, 2012
- American Resort Development Association (ARDA) Gold Award, 2003

Joan K. Mendel Kingergarden Classroom

- American Institute of Architects (AIA) Honolulu Award of Merit, 2019

Nanea Clubhouse

- American Institute of Architects Pacific NW Region (AIA NW) Design Citation Award, 2006
- Building Industry of Hawai'i (BIA) Overall Grand Award for New Commercial, 2006
- National Association of Industrial and Office Properties (NAIOP) Hawai'i Commercial Kūkulu Hale Award, 2006
- American Institute of Architects (AIA) Honolulu Design Award of Excellence, 2005
- Building Industry of Hawai'i (BIA) Division Award New Commercial, 2004

Parker Ranch Center

- Hawai'i Tourism Authority (HTA) Keep it Hawai'i Award of Merit, 2003

PBS Hawai'i

- National Association of Industrial and Office Properties (NAIOP) Hawai'i Non-Profit Kūkulu Hale Award, 2018



honors & awards

The Salvation Army KROC Center Hawai'i

- National Association of Industrial and Office Properties (NAIOP) Hawai'i New Commercial Kūkulu Hale Award, 2012
- American Society of Interior Designers (ASID) Institutional Award of Excellence, 2012

St. Regis Princeville Resort

- Building Industry of Hawai'i (BIA) Overall Grand Award for Commercial Remodeling, 2010

Standard State Mitigation Plan CNMI

- American Planning Association (APA) Hawai'i Current Topic Award Safe Growth, 2004

Wooden Structures Repair Manual for Historic Facilities at Joint Base Pearl Harbor-Hickam for Commander, Navy Region Hawaii

- Historic Hawai'i Foundation (HHF) Preservation Commendation Award, 2017

Concrete, Masonry, and Metal Structures Repair and Maintenance Manual for Historic Facilities at Joint Base Pearl Harbor-Hickam for Commander, Navy Region Hawaii

- Historic Hawai'i Foundation (HHF) Preservation Commendation Award, 2018

U.S. Army Corps of Engineers, Honolulu District Consolidated Real Property Master Plan, Okinawa Area

- Building Industry of Hawai'i (BIA) Overall Grand Award for Commercial Remodeling, 2010

U.S. Army Corps of Engineers, Honolulu District Consolidated Training and Medical Facility

- Building Industry of Hawai'i (BIA) Overall Grand Award for Commercial Remodeling, 2007

University of Hawai'i - Center for Microbial Oceanography: Research and Education (C-More)

- American Institute of Architects (AIA) Honolulu Award of Merit, 2012
- American Society of Interior Designers (ASID) Institutional Award of Honor, 2012
- National Association of Industrial and Office Properties (NAIOP) Hawai'i New Commercial Kūkulu Hale Award, 2011
- National Concrete Masonry Association (NCMA), Award of Excellence - Commercial, 2011
- Masonry Institute of Hawai'i, (MIH) Outstanding Work Award, 2010

Waialua Town Master Plan

- American Planning Association (APA) Hawai'i Hawai'i Community-Based Planning Award, 2005

Wailea Beach Resort & Spa

- National Association of Industrial and Office Properties (NAIOP) Hawai'i Renovation Award - Commercial/Other Over 40,000 SF, 2019

Ward Entertainment Center

- Building Industry of Hawai'i (BIA) Overall Grand Award, 2002
- National Association of Industrial and Office Properties (NAIOP) Hawai'i Project of the Year, 2002



civil engineering

Services Overview

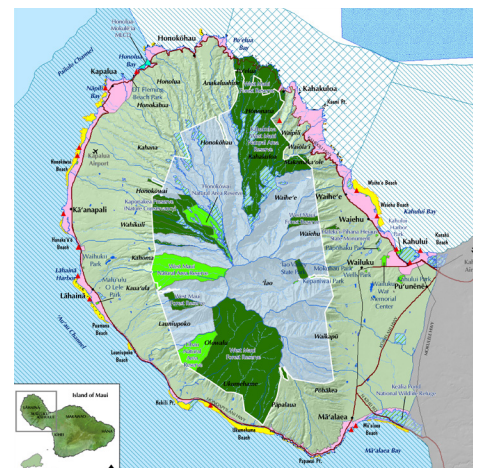
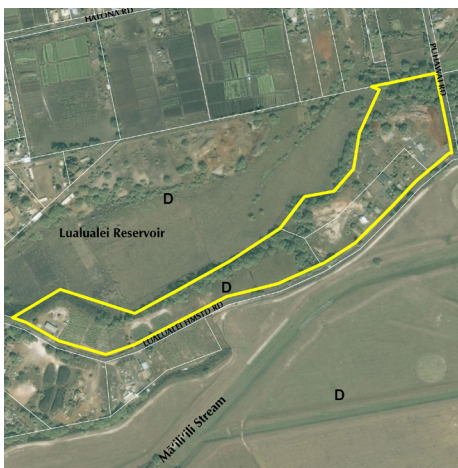
G70 is a full-service civil engineering practice. We provide services for a wide variety of project types serving the public and private sectors, including:

- Land Development
- Residential Site Development
- Commercial Site Development
- Energy Systems Development
- Industrial Site Development
- Resort/Hospitality Site Development
- Institutional/Educational Site Development
- Transportation
- Wastewater
- Water Supply and Distribution
- Utility Infrastructure
- Stormwater Management
- Sustainable Design

Civil Engineering Consulting Services include the full range of services for a civil consulting firm. Our capabilities are broadened significantly with the overlapping services and abilities of G70, including Planning and Environmental Services, Land-Use Permitting, Architecture, Sustainable Development, GIS and Geospatial Services, and Asset Management.

- Site Master Planning and Site Selection
- Infrastructure Master Planning
- Feasibility Studies and Due Diligence
- Preliminary Engineering Report (PER)
- Permitting – NPDES, UIC, Dept. of the Army, Water Quality Certification, SCAP
- Environmental Assessments (EA) and Environmental Impact Statements (EIS)
- Drainage and Water Quality
- Watershed and Ecosystem Management Planning
- Infrastructure Modeling
- Surface Modeling and Earthwork Analysis
- Geospatial Analysis and Mapping
- Construction Plans, Specifications and Cost Estimates
- Bid Proposals and Contract Documents
- Construction Administration and Observation
- Project Management
- Value Engineering
- Visualization Services
- Community Support and Public Involvement

G70 recognizes important trends in our industry and in our society, and we position ourselves and our company to take advantage of trends by adapting our services and abilities. We also anticipate the needs of our clients and provide services to add value to their projects by incorporating services that are synergistic or complementary to each other.



planning

GEOGRAPHICAL INFORMATION SYSTEM (GIS)

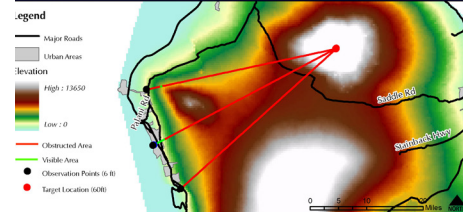
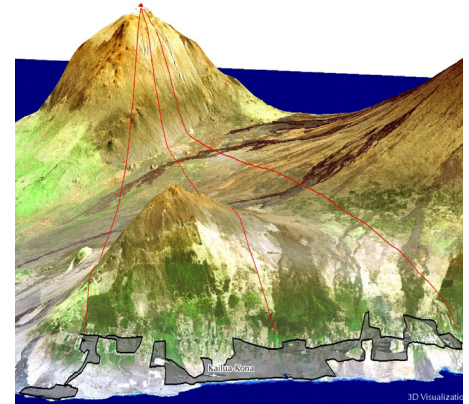
G70 utilizes GIS technology as an essential tool in a broad-range of architectural, planning, sustainable development, and asset management projects. Our experience applying GIS technology includes:

- Land Use Planning
- Military Planning
- Site Investigation/Analysis/Selection
- Entitlement Process
- Emergency Preparedness/Management
- Flood Hazard Mapping
- Environmental Planning/Management

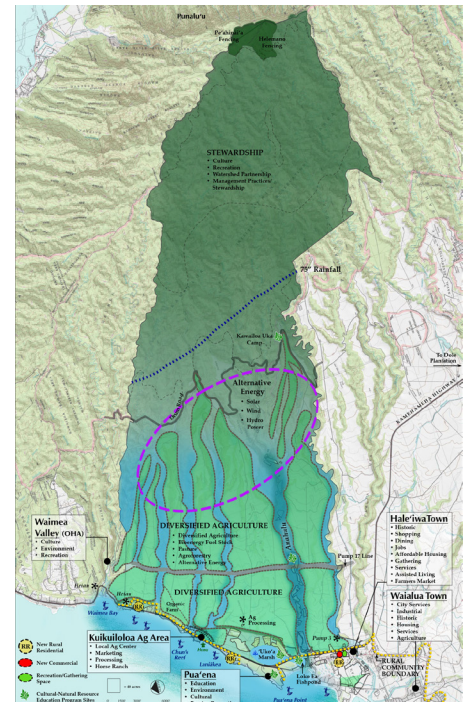
In addition, we provide GIS development for clients requiring needs assessments, requirements analysis, data collection and conversion, application development, geo-database design/creation, mapping, and data modeling and analysis.

At G70 we establish a clear project task that describes how GIS will be applied and support each project. Whether the task is to implement an interactive tool for accessing useful information through online maps or to conduct complex analysis of both geospatial and non-geospatial data, we deliver high quality GIS products to our clients.

Our GIS Services group consists of a multi-disciplinary team of GIS/Geospatial professionals, GIS-trained planners, GIS-trained architects, and GIS-trained graphic designers working across the company as an integrated technology team.



a Kea
Sight from Kailua Kona



resumes

MARK KĀWIKĀ MCKEAGUE

AICP
Principal Planner
Director of Cultural Planning



Mr. McKeague's background, experience, and passion provides a unique and knowledgeable approach to land use planning and cultural resource management. Mr. McKeague effectively administers and advocates a Native Hawaiian perspective in environmental and land use planning, and architectural design and space programming. Mr. McKeague brings over 19 years of experience in facilitating local and national level planning efforts for private, public, and non-profit sector clients. His work includes the preparation of Master Plans, Cultural Resource Management Programs, Environmental Impact Studies, and facilitating community dialogue.

SELECTED PROJECTS:

Kamehameha Schools - Cultural Resource Management Plan
State of Hawai'i

Kamehameha Schools - North Shore Plan
Island of O'ahu

Kamehameha Schools - Natural Resource Management Plan Update
State of Hawai'i

Kamehameha Schools - Keauhou Bay Management Plan
Keauhou, Hawai'i

Board of Water Supply - Ko'olau Loa Watershed Management Plan
Windward O'ahu

Board of Water Supply Hai'iku Stairs
He'eia, O'ahu

Office of Hawaiian Affairs - Strategic Management Framework for Kaka'ako Makai
Honolulu, O'ahu

Department of Hawaiian Home Lands & Papakōlea Community Development Corporation - Native Hawaiian Education Cultural Center & Kūpuna Assisted Living Center Master Plan
Puowaina, O'ahu

Department of Hawaiian Home Lands - Ho'olehua Veteran Center - EA, Master Plan, CRM
Ho'olehua, Molokai

Department of Hawaiian Home Lands - Moloka'i Island Plan
Island of Moloka'i

Department of Hawaiian Home Lands - Waimea Nui Master Plan
Honolulu, O'ahu

Department of Hawaiian Home Lands - Wai'anae Coast Emergency Access Road/ Parallel Secondary Access Road
Wai'anae, O'ahu

Department of Hawaiian Home Lands - Pu'u Opae Special Area & Settlement Plan
Kekaha, Kaua'i

University of Hawai'i at Mānoa - Hawaii Institute of Marine Biology (Coconut Island), Master Plan, LRDP, EIS, CIA
Kāne'ohe, O'ahu

Pelekane Bay - EA, Ecological Restoration Assessment
North Kohala, Hawai'i

Kalaupapa Memorial
Kalaupapa, Moloka'i

Mokuhinia and Moku'ula - Cultural Landscape & Ecological Restoration Plan
Lahaina, Maui

Department of Emergency Management O'ahu Coastal Communities Evacuation Planing Phase I
Island of O'ahu

CNMI State Standard Mitigation Plan
Commonwealth of the Northern Mariana Islands (CNMI)

PROFESSIONAL REGISTRATIONS & ASSOCIATIONS:

American Institute of Certified Planners (AICP), Member

Society for Hawaiian Archeology, Member

Hulu Mamo Hawaiian Civic Club, 2012-2013

O'ahu Island Burial Council, Chair; Vice-Chair; 'Ewa Moku Representative 2005-2012

American Planning Association (APA), Member

PA'I Foundation, Board Director 2001-2003; President 2003-Present

Native Hawaiian Chamber of Commerce, Member

EDUCATION:

NAGPRA & ARPA Application & Requirement
National Preservation Institute

Hawai'i State Foundation on Culture and the Arts, Folk and Traditional Arts Apprentice Program
Cyril Lani Pahinui

Section 106: A Review for Experienced Practitioners
National Preservation Institute

Consultation and Protection of Native American Sacred Lands
National Preservation Institute

Master of Urban and Regional Planning
University of Hawai'i at Mānoa, HI

Historic Preservation Graduate Certificate
University of Hawai'i at Mānoa, HI

Identification & Management of Traditional Cultural Places
National Preservation Institute

B.A. Political Science
University of Hawai'i at Mānoa, HI

National Disaster Preparedness Training Center
FEMA Certified HURRIPLAN Resilient Building Design Coursework

PROJECT HONORS & AWARDS:

Hawai'i Business Magazine - 20 for the Next 20 Honoree, 2020

Omidyar Fellow, 2019-2020

APA Hawai'i Chapter - Kalaupapa Memorial Conceptual Design, Historic Preservation Award, 2018

JEFFREY H. OVERTON

AICP, LEED AP
Principal Planner



As Principal Planner, Mr. Overton leads the preparation of Master Plans, environmental impact documents, land use permitting, and community involvement for private developments, military installations, and government projects. His experience spans over 35 years of Environmental Impact Statements and permitting for residential communities, infrastructure and utilities, renewable energy projects, government facilities, scientific installations, schools, resorts, commercial/mixed-use centers, and recreational facilities. Mr. Overton directs community and area-wide Master Plans, site selection studies and urban design plans, and provides expert testimony before State and County land use authorities.

SELECTED PROJECTS:

Kamehameha Schools - Kapālama Strategic Implementation Plan & Master Plan
Kapālama, O'ahu

Kamehameha Schools - Kohou TOD Residential Development
Honolulu, O'ahu

Kamehameha Schools - North Shore Lands Master Plan
North Shore, O'ahu

Kamehameha Schools - Keauhou Bay Management Master Plan
Keauhou, Hawai'i

Kamehameha Schools - Hale'iwa Store Lots Master Plan, Zone Change, Environmental Assessment
Hale'iwa, O'ahu

Kamehameha Schools - Waipahu TOD Residential Development
Waipahu, O'ahu

Kualoa Ranch - Master Plan, EA, Permits
Kualoa, O'ahu

Kualoa Regional Park Wastewater Systems - EA, SMA Permit
Kualoa, O'ahu

Koko Head District Park & Hanauma Bay Preserve - Master Plan, EIS, SMA, CDUP
Honolulu, O'ahu

DTS Pearl Ridge Bus Terminal/TOD Master Plan, EA, Permits
Aiea, Oahu

Ho'opili Community - Master Plan, Zone Change, Urban Design Plan
Kapolei, O'ahu

Le Jardin Academy New Campus - Master Plan, EA, DP, Zone Change, SMA
Kailua, O'ahu

HHFDC Affordable Housing - Master Plan, EA, SMA, 201H
Kahului, Maui

Kamakana Villages at Keahuolu - Master Plan, EA, 201H
Kona, Hawai'i

Kapolei Harborside Center - Master Plan, EIS, State Land Use, Zone Change
Kalaeloa, O'ahu

Kapolei West Community - Master Plan, State Land Use, Zone Change
Kapolei, O'ahu

Makaīwa Hills Residential Community - Master Plan, EIS, State Land Use, Zone Change
'Ewa, O'ahu

Department of Education - Pu'u Kukui Elementary School - Master Plan, EA, Project District Application
Wailuku, Maui

Moku'ula/Mokuhinea Historic Fishpond - Ecosystem Restoration Plan
Lahaina, Maui

Manini'Ōwali Residential Community - Master Plan, EIS, State Land Use
Kona, Hawai'i

PROFESSIONAL REGISTRATIONS & ASSOCIATIONS:

American Institute of Certified Planners (AICP), Member

Urban Land Institute (ULI), Member

O'ahu Economic Development Board, Chair

U.S. Green Building Council (USGBC) Leadership in Energy and Environmental Design Accredited Professional (LEED AP)

EDUCATION:

M. S. Marine Environmental Science
State University of New York, NY

B. S. Zoology/Biology Oceanography
Duke University, NC

PROJECT HONORS & AWARDS:

Hale'iwa Store Lots - APA Hawai'i Environment/Preservation Award, 2015

Kamakana Villages at Keahuolu - APA Hawai'i Chapter Outstanding Planning Award, 2011

Kamehameha Schools North Shore Plan - APA National Planning Excellence Award, 2008

Waialua Town Master Plan - APA Hawai'i Chapter Community-based Planning Award, 2005

Mauna Kea Science Reserve Master Plan - APA Hawai'i Chapter Outstanding Planning Award, 2000

STEPHANIE YING SAEPHAN

GISP
GIS Manager



Ms. Saephan holds a Masters degree in Botany from the University of Hawai'i at Mānoa, and a Bachelor of Arts in Geography from Clark University. She has been working in the GIS field for over 20 years, providing GIS services, including web-based mapping applications, spatial analyses and modeling, training, and needs-assessment for various projects ranging from ecological/conservation to renewable energy and housing/mortgage studies in the research/ academic, government, and corporate environments. Prior to joining G70, Ms. Saephan headed the joint, Botany and the Pacific Cooperatives Studies Unit GIS research lab at UH Mānoa.

PROFESSIONAL REGISTRATIONS & ASSOCIATIONS:

Certified Geographic Information
Systems Professional (GISP)

EDUCATION:

Masters of Science in Botany
University of Hawai'i at Mānoa, HI

Bachelor of Arts in Geography
Clark University, Worcester, MA

SELECTED PROJECTS:

**O'ahu Coastal Communities
Evacuation Planning**
Island of O'ahu

County of Kaua'i - Community Plan GIS
Island of Kaua'i

**City and County of Honolulu
NPDES Storm Water Public
Education Project**
Island of O'ahu

**NAVFAC Hawai'i Natural Resources
and Cultural Resources GIS**
State of Hawai'i

**U.S. Army Corps of Engineers -
West Maui Watershed Study**
Island of Maui

**Interisland Cable Web Mapping
Application***
Islands of Lāna'i, Moloka'i, and O'ahu

**University of Hawai'i at Mānoa, School of
Architecture - Building Information
Modeling Project***
Honolulu, O'ahu

**Biocomplexity of Avian Malaria on
Hawai'i Island***
Island of Hawai'i

**University of Hawai'i at Mānoa, Botany
Dept. and Pacific Cooperative Studies
Unit - 3D Modeling of Algal N₁₅ Plume
(Nitrogen-enriched Effluent) Off the West
Coast of Maui***
Island of Maui

**GIS-Based Model to Aid Management of
O'ahu's Wetlands***
Island of O'ahu

**Joint Center for Housing Studies at
Harvard University***
United States

**U.S. Department of Housing and Urban
Development Funded Project***
United States

**Hilo Harbor Improvements -
HRS 343 Compliance**
Hilo, Hawai'i

PAUL T. MATSUDA

P.E., LEED AP
Principal
Director of Civil Engineering



Paul Matsuda, P.E., LEED AP is a principal and the Director of Civil Engineering of G70. Paul has more than 20 years of civil engineering experience in a wide variety of site development, transportation and utility infrastructure projects throughout Hawai'i and the Pacific Northwest. He is responsible for management and delivery of the firm's engineering projects and is actively involved in design and project management for many of them. Paul received a Bachelor of Science degree in civil engineering from the University of Washington and is a licensed professional in Hawai'i, Oregon, and Washington.

SELECTED PROJECTS:

Department of Hawaiian Home Lands - Waimea Nui

Waimea, Hawai'i

Department of Hawaiian Home Lands - Moloka'i Homesteads

Island of Moloka'i

Department of Hawaiian Home Lands - Lualualei Homestead Subdivision Phase II

Lualualei, O'ahu

Department of Hawaiian Home Lands - Lualualei Homestead Subdivision and Stream Study

Lualualei, O'ahu

Department of Hawaiian Home Lands - Ka'u Water Master Plan

Ka'u, Hawai'i

Department of Hawaiian Home Lands - Wong Farm Subdivision

Waimānalo, O'ahu

Department of Hawaiian Home Lands - Kanakaloloa Cemetery

Island of Moloka'i

Department of Hawaiian Home Lands - Moloka'i Homesteads - Construction Management

Island of Moloka'i

Department of Hawaiian Home Lands - Moloka'i Homesteads - Drainage

Island of Moloka'i

Office of Hawaiian Affairs - 4531 Kuamo'o Road Civil Infrastructure Assessment

Kapa'a, O'ahu

Office of Hawaiian Affairs - Kaka'ako Makai Master Plan

Honolulu, O'ahu

Kamehameha Schools - Palama Uka Camp Master Plan

North Shore, O'ahu

Kamehameha Schools - Hale'iwa Store Lots

Hale'iwa, O'ahu

Kamehameha Schools - Hale'iwa Rural Village Drainage Master Plan

Hale'iwa, O'ahu

Kamehameha Schools - Kapaeloa Cultural Learning Project

Hale'iwa, O'ahu

Kamehameha Schools - Kawaioloa Agribusiness Center Master Plan

Kawaioloa, O'ahu

Kamehameha Schools - Kohou Infrastructure Evaluation

Honolulu, O'ahu

Kamehameha Schools - Kohou Residential Alternatives Study

Honolulu, O'ahu

City & County of Honolulu - Emergency Operations Center

Honolulu, O'ahu

PROFESSIONAL REGISTRATIONS & ASSOCIATIONS:

State of Hawai'i – Professional Engineer (P.E.) Civil #10901

State of Oregon – Professional Engineer (P.E.) Civil #19,250

State of Washington – Professional Engineer (P.E.) Civil #35,943

U.S. Green Building Council (USGBC) - Leadership in Energy and Environmental Design Accredited Professional (LEED AP)

U.S. Green Building Council, Hawai'i Chapter

American Society of Civil Engineers (ASCEH), Member

American Council of Engineering Companies Hawai'i (ACECH), Member

American Water Works Association (AWWA), Member

EDUCATION:

B.S. Civil Engineering
University of Washington, WA

**Project Work Prior to G70*

PAUL T. MATSUDA

P.E., LEED AP
Principal
Director of Civil Engineering

SELECTED PROJECTS:

City & County of Honolulu - Farrington Highway Widening

Kapolei, O'ahu

City & County of Honolulu - Honolulu Fire Department Regional Fire Training Center

Honolulu, O'ahu

City & County of Honolulu - Honolulu Fire Department Sustainability Study

Honolulu, O'ahu

City & County of Honolulu - Street Sign Inventory Database

Honolulu, O'ahu

City & County of Honolulu - NPDES Storm Water Public Education

Honolulu, O'ahu

County of Kaua'i - Impact Fee Needs Assessment

Island of Kaua'i

County of Maui - Wailuku Campus Master Plan

Wailuku, Maui

County of Maui - Kalana O Maui Campus Expansion - Phase 1A Office Building

Wailuku, Maui

County of Maui - Kalana O Maui Campus Expansion - Phase 1B Parking Structure and Office

Wailuku, Maui

Department of Transportation, Harbors Division - Kalaehoa Harbor Fuel Pier Development Plan

Kalaehoa, O'ahu

Department of Transportation, Harbors Division - Kalaehoa Harbors Environmental Impact Statement

Kalaehoa, O'ahu

Department of Transportation, Harbors Division - Commercial Harbors Civil Engineering Support, Phase 4
State of Hawai'i

- **Hilo Harbor Demolition of Quonset Hut, Reconnaissance Level Survey (HRS 6E), Phase 1 Environmental Site Assessment & Mitigation Plan**
Hilo, Hawai'i Island
- **Hilo Harbor Demolition of Pier 2/3 Shed and Investigation of Sink Holes**
Hilo, Hawai'i Island
- **Hilo Harbor Expansion of Radio Bay Yard**
Hilo, Hawai'i Island
- **Hilo Harbor Exemption from Environmental Assessment (HRS 6E) for Demolition of Water Tank & Tower**
Hilo, Hawai'i Island

Department of Transportation, Harbors Division - Kalaehoa Harbor Fuel Pier Development Plan

Kalaehoa, O'ahu

Department of Transportation, Harbors Division - Kalaehoa Harbors Environmental Impact Statement

Kalaehoa, O'ahu

Department of Education - Kīhei High School Water Master Plan and Improvements

Kīhei, Maui

Department of Accounting & General Services - Hawai'i Film Studio Various Improvements Phases I & II

Honolulu, O'ahu

Department of Accounting & General Services - Kakūanaō'a Renovation

Honolulu, O'ahu

Kahuku Agricultural Subdivision

Kahuku, O'ahu

Kunia Solar Farm

Waipahu, O'ahu

Lunalilo Home Master Plan

Honolulu, O'ahu

University of Hawai'i at Manoa - Metcalf Water System Improvements

Honolulu, O'ahu

University of Hawai'i at Mānoa - Student Housing Study

Honolulu, O'ahu

University of Hawai'i at Mānoa - College of Education Master Plan
Honolulu, O'ahu

University of Hawai'i at Mānoa - Richardson School of Law Outreach Center

Honolulu, O'ahu

University of Hawai'i at Mānoa - Webster Hall

Honolulu, O'ahu

Hoakalei Resort Master Plan
'Ewa, O'ahu

Royal Kunia Phase II Due Diligence
Waipahu, O'ahu

Hawai'i Pacific University - Aloha Tower Lofts

Honolulu, O'ahu

Salvation Army Residence Facilities - Land Use Permitting
Honolulu, O'ahu

**Project Work Prior to G70*

RYAN M. K. CHAR

P.E., LEED AP
Principal



Mr. Char is a Principal at G70 and has over 12 years of experience working on civil engineering and land-use planning projects in Hawaii and California. The projects Mr. Char has worked on include master planning, design, permitting support, and construction management for various commercial, educational, residential, and infrastructure site developments. As a principal engineer, his duties include overseeing the Civil Engineering Division at G70 as well as fulfilling company-wide management, operational, and training responsibilities. He directs the preparation and production of engineering drawings, plans, reports, specifications, and cost estimates. Mr. Char's experience in Hawaii and in the greater Los Angeles, California areas has been diverse but also includes an emphasis in educational campus infrastructure master planning and design, as well as stormwater management, including design of new Low Impact Development stormwater quality Best Management Practices and controls.

SELECTED PROJECTS:

**Department of Hawaiian Home Lands –
Kanakaloloa Cemetery**
Ho'olehua, Moloka'i

**Hawai'i Dairy Farms – Planning and
Permitting, EA, Construction Plans;
State Dept. of Health Approvals and
Construction Management**
Māhā'ulepū, Kauai

**Department of Accounting and General
Services – Hawai'i Film Studio Various
Improvements, Phase I and II**
Honolulu, O'ahu

**Department of Hawaiian Home Lands –
Moloka'i Homesteads Flood
Reconnaissance Study**
Kalama'ula, Moloka'i

**Department of Hawaiian Home Lands –
Ho'olehua Water System Improvements
USDA Project**
Ho'olehua, Moloka'i

**Department of Hawaiian Home Lands –
Wai'anae Coast Emergency Access Road
Planning & Feasibility Study**
Wai'anae, O'ahu

**Department of Hawaiian Home Lands –
Moloka'i Ho'olehua Water System Repairs,
Phase 1 Construction Management**
Ho'olehua, Moloka'i

**Howard Hughes Corporation Kewalo
Basin Infrastructure Study**
Honolulu, O'ahu

**Department of Hawaiian Home Lands –
Moloka'i Homesteads: Structural
Upgrades**
Ho'olehua, Moloka'i

**Department of Hawaiian Home Lands –
Kap'aakea Flood Mitigation Improvements**
Kap'aakea, Moloka'i

HART Dillingham Kaka'ako Station Group
Honolulu, O'ahu

**City & County of Honolulu –
Farrington Highway Widening EA and
Preliminary Design**
Kapolei, O'ahu

**County of Maui –
Wailuku Campus Master Plan**
Wailuku, Maui

**County of Maui – Kalana O Maui Campus
Expansion, Phase IA, Office Building**
Wailuku, Maui

**Kamehameha Schools –
Hale'iwa Store Lots**
Hale'iwa, O'ahu

**Adventist Health Castle Medical Center –
Hawai'i Loa Campus Master Plan &
Preliminary Engineering Report**
Kāne'ohe, O'ahu

PROFESSIONAL REGISTRATIONS & ASSOCIATIONS:

State of Hawai'i – Professional Engineer
(P.E.) Civil, #15480

State of California – Professional
Engineer (P.E.) Civil, #76734

Government of Guam – Professional
Engineer (P.E.) Civil, #1749

U.S. Green Building Council (USGBC)
Leadership in Energy and Environmental
Leadership Accredited Professional
(LEED AP)

American Public Works Association
(APWA), Member, Past President, Awards
Director

American Society of Civil Engineers
(ASCE), Member

American Council of Engineering
Companies Hawai'i (ACECH), Member

Rotary Club of Honolulu Sunrise, Member;
President 2018-2019

EDUCATION:

Master Degree in Civil Engineering
University of Southern California, CA

Bachelors Degree in Civil Engineering
Minor in Business Administration
University of Southern California, CA

OSHA 16-Hour Occupational Safety and
Health Confined Space Training (29CFR
1910.146 (g 1 through g 3))

HONORS & AWARDS:

Pacific Business News - 40 Under 40,
Awardee, 2016

Pacific Century Fellows, Fellow, 2015-
2016

project profiles

City & County of Honolulu Alapa'i Joint Traffic Management & Emergency Operations Center

HONOLULU, O'AHU

G70 provided programming, conceptual design and entitlement services. This includes an Environmental Assessment and a Special District Major Permit for two facilities at the existing bus transit site in Downtown Honolulu. These facilities, collectively known as the Alapa'i Transit Center (ATC) and the Joint Traffic Management Center (JTMC), house operational activities of The Bus and various City and State traffic management and emergency response departments for the purpose of daily and emergency coordination.

PROJECT FACTS

Client: City & County of Honolulu

SERVICES PROVIDED

Planning & Environment



City & County of Honolulu O'ahu Coastal Communities Evacuation Planning

ISLAND OF O'AHU

G7o teamed with Atkins and the Department of Emergency Management to identify refuge areas and develop evacuation route plans for use in the event of a tsunami warning notification for the City and County of Honolulu. Approximately three-quarters of the island's coastline is included in this project. In addition to working with community groups to identify potential shelters and understand local issues, G7o provided GIS expertise including data collection, GPS field verifications and mapping, and GIS-based refuge capacity analysis.

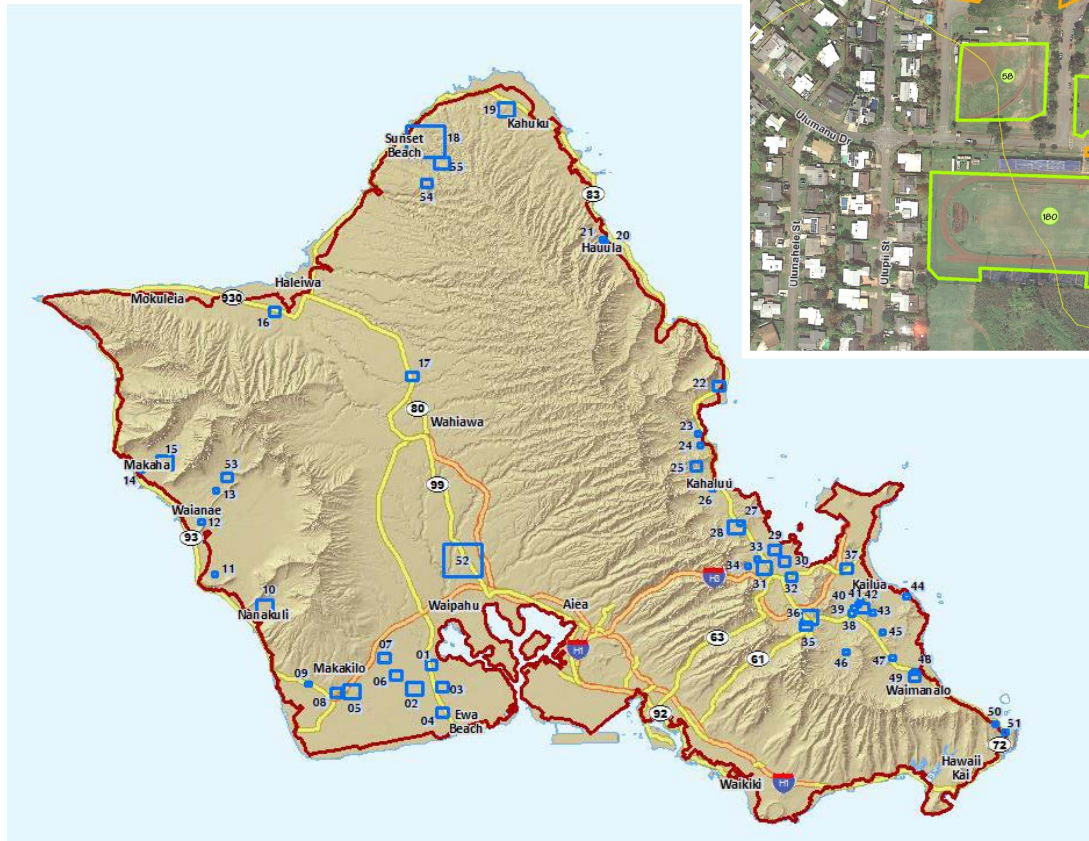
PROJECT FACTS

Client: City & County of Honolulu
Department of Emergency Management

SERVICES PROVIDED

Planning & Environment

GIS Mapping & Analysis



Commonwealth of the Northern Mariana Islands Emergency Operations Center

SAIPAN, NORTHERN MARIANA ISLANDS

G70 is provided Architectural and Planning services for the development of a new Emergency Operations Center at Saipan, Commonwealth of the Northern Mariana Islands (CNMI). The Center will monitor seasonal typhoon events and other natural disasters, and will coordinate civil defense activities on the island of Saipan and throughout the CNMI region of the North Pacific Ocean. G70 completed a NEPA-level Environmental Assessment for the project.

PROJECT FACTS

Client: Government of the Commonwealth of the Northern Mariana Islands

SERVICES PROVIDED

Architecture

Planning & Environment



Commonwealth of the Northern Mariana Islands Standard State Mitigation Plan

NORTHERN MARIANA ISLANDS

The Commonwealth of the Northern Mariana Islands (CNMI) Standard State Mitigation Plan (SSMP) was developed to fulfill the requirements of the Disaster Mitigation Act of 2000. The SSMP is a multi-hazard natural disaster mitigation plan, integrating multiple facets of information using FEMA's HAZUS program and independent data and research gathered by the project team. Hazard profiles were developed for typhoons, tropical storms, floods, tsunamis, earthquakes, volcanic eruptions, drought, and wildfires. A component in this study was the use and application of a Geographic Information System (GIS) in completing an asset inventory and loss evaluation that included identifying key cultural, archaeological, and historical resources assets.

PROJECTS FACTS

Client: Commonwealth of the Northern Mariana Islands

Size: N/A

Construction: N/A

Completion: N/A

SERVICES PROVIDED

Planning & Environment



U.S. Army Corps of Engineers, Honolulu District Hurricane Evacuation Studies

NORTHERN MARINA ISLANDS, AMERICAN SAMOA, HAWAI'I, GUAM

G7o has completed MMTs for all the main Hawaiian Islands, Guam, CNMI and the main Island of Tutuila in American Samoa. We have also trained the emergency staff of these jurisdictions (with the exception of American Samoa - pending) in the use of the tool. We have collaborated with PBS&J on these studies. Under the HES, G7o conducted Post Storm Assessments (PSA) for hurricanes Chata'an and Pongsona when they hit Guam and CNMI. The assessments of the storms and how the Corp products and services performed in these storms and evaluations of improvements for the future.

PROJECT FACTS

Client: US Army Corps of Engineers, Honolulu District

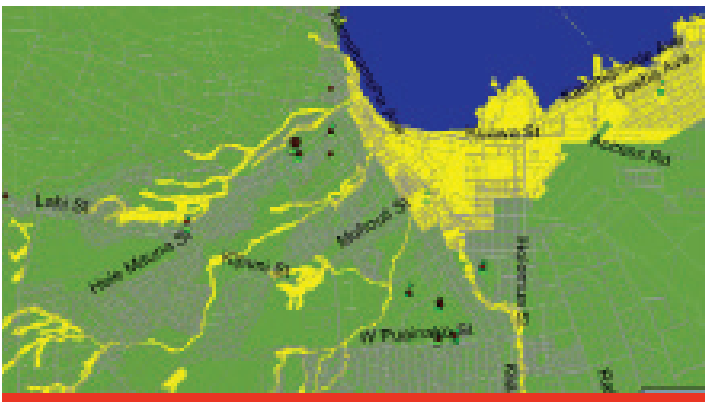
Size: N/A

Construction: N/A

Completion: N/A

SERVICES PROVIDED

Planning





111 S. King Street, Suite 170
Honolulu, HI 96813
808.523.5866
www.g70.design