

CHRISTINE FEINHOLZ, GISP

Senior Geospatial Analyst

Aloha Mr. Adams–

I am a 35-year Hawaii resident with over 25 years of experience in geospatial services. I have been a certified GIS Professional (GISP) for over ten years, and I'm excited to offer locally-sourced GIS services to the Hawaii County Mass Transit Agency. I'm eager to assist with professional services category RD.3 - Community and Economic Development, Community Engagement, Strategic Planning, Sustainability Systems.

As a classically-trained geographer at the University of Hawaii, Hilo I have a unique understanding of the local geography and people of Hawaii island. I have a dedicated interest in assisting Research and Development with my services including community engagement online and offline solutions, community assessment, demographics and strategic planning.

I've included my resume with testimonials of my work and references. I look forward to talking more about working with your team, and I am available for immediate consultation.

Cheers,

Christine Feinholz

July 6, 2023



OFFICE

12-7241 Ki'i Nani St.
Box 4756
Pahoa, HI 96778

808.497.4671

christinefeinholz@gmail.com

CHRISTINE FEINHOLZ, GISP

Senior Geospatial Analyst

EDUCATION

San Diego State University (1998-2000)

Coursework completed toward a Master's of Arts

GPA – 3.65

- Advanced remote sensing theory and methods
- Advanced GIS and geospatial programming

University of Hawai'i at Hilo (1994-1998)

Bachelor of Arts

GPA – 3.93

- Physical Geography
- Climate and Environment

PUBLICATIONS

Noori, Lihla; Atkinson, Scott; Anders, E.; Parks, John; Giardina, Christian; Winter, Kawika; Mejia, Manuel; Feinholz, Christine; Mathews, Tiffany. (2018). How healthy is your ahupua'a? Community Watershed Snapshot Guidebook. Honolulu, HI: Hawai'i Conservation Alliance. 130 p.Hokulani

Levine, Arielle Sarah, and Christine Loftus Feinholz. "Participatory GIS to inform coral reef ecosystem management: Mapping human coastal and ocean uses in Hawaii." *Applied Geography* 59 (2015): 60-69.

DEVELOPED DATA AND MAPS FOR PUBLICATIONS

Aikau, Hokulani K., Nahaku Kalei, and Bradley Wong. "He'eia Kūpuna Mapping Workshops." *At Home and in the Field*. University of Hawaii Press, 2015. 222-228.

Gombos, Meghan, et al. "Hawai'i coral reef strategy: priorities for management in the main Hawaiian islands 2010-2020." NOAA Pacific Services Center (2010).

Smultea, Mari A., Thomas A. Jefferson, and Ann M. Zoidis. "Rare Sightings of a Bryde's Whale (*Balaenoptera edeni*) and Sei Whales (*B. borealis*) (Cetacea: Balaenopteridae) Northeast of O'ahu, Hawai'i." *Pacific Science* 64.3 (2010): 449-457

Norris, T. F., Smultea, M. A., Zoidis, A. M., Rankin, S., Loftus, C., Oedekoven, (2005). A preliminary acoustic-visual survey of cetaceans in deep waters around Ni 'ihau, Kaula 'i, and O'ahu, Hawai 'i . February 2005. Prepared by Cetos Research Organization, Bar Harbor, Maine, under contract, (2057sa05-F).



CONTACT

12-7241 Ki'i Nani St.

Box 4756

Pahoa, HI 96778

808.497.4671

christinefeinholz@gmail.com

SKILLS

ArcGIS (Map and Pro)

ArcGIS Online ArcGIS

ArcGIS Spatial Analyst

Model Builder

SocialPinpoint

Adobe Illustrator

ERDAS

Microsoft Office Suite

Microsoft Access

Proposal/Grant Writing

Procurement

CERTIFICATIONS

Certified GIS Professional

CHRISTINE FEINHOLZ, GISP

SELECTED RELEVANT CONSULTING EXPERIENCE

Pacific Cartography

Senior Geospatial Analyst

Maui County Department of Planning

2021 - Maui Important Agricultural Lands (IAL) Mapping.

Develop and maintain a multi-faceted project website that hosts relevant documents and links, a chat room, an ideas wall and a map on which to drop spatial comments.

Hawaii Department of Land and Natural Resources

Sub-contract to Planning Solutions, Inc.

2018 - Tantalus Roundtop Corridor Management Plan.

Develop and maintain an informative public-facing project website and online web map application to invite spatial comments from the public.

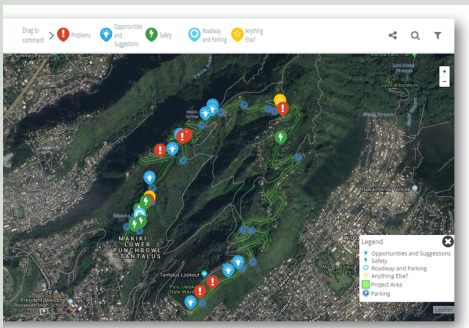
tantalus-roundtopcorridor.com/public-comments

2015 - North Shore Bike Plan Invited Stakeholder Engagement.

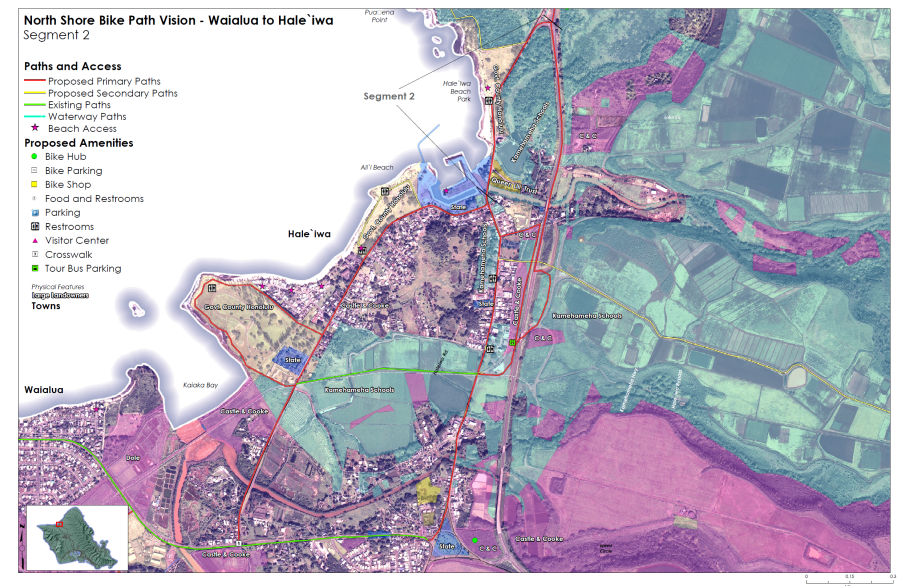
In 2015, the North Shore Community Land Trust invited large land-owners with properties adjacent to proposed bicycle path alignments to participate in developing path alignment alternatives. Pacific Cartography developed and implemented participatory mapping workshops to design a comprehensive proposal of bicycle path alignment options to promote regional transportation alternatives.



IAL Project Website



Tantalus-Round-Top Corridor Stakeholder Engagement Site



North Shore Bike Path Stakeholder Engagement

CHRISTINE FEINHOLZ, GISP

SELECTED OTHER EMPLOYMENT EXPERIENCE

IMSG on contract to the NOAA Pacific Services Center

Senior Geospatial Analyst (2006 – 2011)

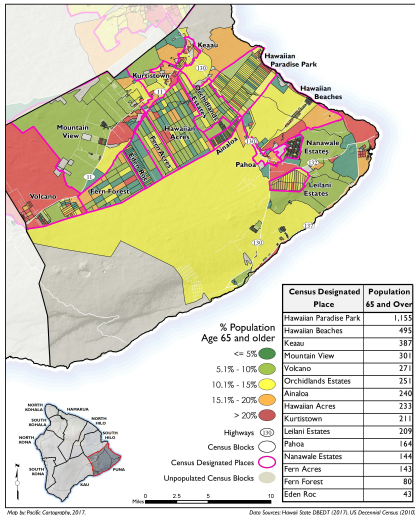
- Maintain, manage, and distribute geospatial data, imagery, and Lidar holdings for Hawaii and the US Pacific Territories.
- Coordinate GIS projects with other NOAA offices (NMFS, Sanctuaries, CRED)
- Coordinate and advise Hawaii State, County, and City jurisdictions on geospatial data acquisition, development, maintenance, deployment, and metadata authoring.
- Perform ground accuracy assessments and on-screen photo identification of land cover classes as part of the NOAA Coastal Change Analysis Program.
- Provide on-site and remote technical assistance to Pacific Island partners in Hawai'i, Guam, the CNMI, and American Samoa.
- Technical Advisor to the Hui O Ko'olaupoko "Ko'olaupoko Urban Sub-basin Action Plan."
- Technical Advisor to the "Hawai'i Coral Reef Strategy 2010-2020."
- Technical advisor to the Kako'o O'iwi He'eia Restoration Project where kupuna were interviewed to map historic land-use practices in the lo'i and fishpond.
- Create geospatial training modules to be deployed both by live trainers and online.
- Technical lead for the West Maui Coastal Uses Mapping community participatory workshops.
- Manage the design and development of the online Guam Resource and Environmental Assessment Tool. This tool provides parcel-level environmental resource reports to planners and resource managers.

Weslin Consulting Services

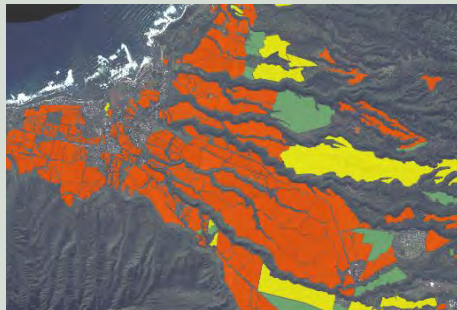
Geospatial Analyst (2002 – 2006)

- Complete extensive and detailed Hawaii statewide demographic and land-use analysis using 2000 Census data in relation to public transportation. Created a custom GIS database for the OMPO for Environmental Justice compliance. Transportation network planning.

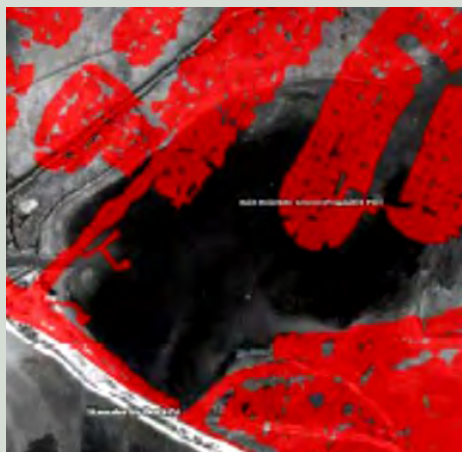
% Population Age 65 and Older by Census Block
Puna Community Development Plan Area



Hawaii County Islandwide Transit Master Plan support (2017)



Agriculture mapping on O'ahu. (2014)



Historical water data derived from 1927 aerial photographs compared to impervious surfaces in 2010, Hawaii Kai, O'ahu. (2016)

TESTIMONIALS AND REFERENCES

CHRISTINE FEINHOLZ, GISP

REFERENCES

John Andoh

Former Interim Director HeleOn
jandoh@cityofredding.org
530-225-4012

Jordan Hart

*Former Director Maui County
Planning Department*
Jordan.Hart@co.maui.hi.us
808-270-7253

Lihla Noori

*Former Director Hawaii
Conservation Alliance*
lihla.noori@gmail.com
727-871-2172

Jim Hayes

Planning Solutions, Inc.
jim@psi.-ho.com
808-550-4559

John Parks

*Former Federal Program Officer
National Oceanic and Atmospheric Administration*

Ms. Feinholz is not only technically competent and highly effective in geospatial analysis, but also a pleasure to work with. Her services provided to the Nature Conservancy of Hawaii allowed our team of marine scientists to both identify the highest priority areas of coral reef habitat and also communicate spatial analysis results clearly and credibly through compelling and easily-understood maps.

In addition to being creative, intelligent, and technically gifted, Ms. Feinholz is able to communicate the complexities of geospatial analysis with partners and clients with simplicity and clarity, making her skills accessible and understood by all. Her outgoing and warm personality makes her approachable and enjoyable to work with. I strongly recommend the opportunity to work with Ms. Feinholz.

Meredith Speicher

*Senior Planner National Park Service
North Shore Bicycle Path Alternative Alignments Project*

Christine Feinholz provided planning and GIS services for a complicated, multi-stakeholder project. Her insight into the process as well as her final maps provided helped the project gather valuable feedback which has greatly increased the success of the project. Christine Feinholz is an excellent team player and provides professional services that allows for deep community and stakeholder feedback and analysis and can turn ideas into action. I highly endorse Christine Feinholz as a professional service provider

Joan Delos Santos

*Former GIS Program Manager
Hawai'i State Office of Planning*

[Review comments on the Maui County Important Agricultural Lands Mapping Project:](#) "I wanted to tell you want an excellent job I think you did on this project. Everything is so well documented, maps and supporting materials are so clear and easy to understand and use (in my opinion). The analysis seems to have been done in a logical and thoughtful manner. Really, really excellent work!"