

# Pu'u Wa'awa'a and Pu'u Anahulu Habitat Conservation Plan Game Mammal Management Update



# Pu'u Wa'awa'a and Pu'u Anahulu HCP Game Mammal Management Update

## Habitat Conservation Plan

- HCP status
- Game Mammal Management

## Research

- Home Range and Movements
- Blood Mineral Sampling
- Survival Rates
- Abundance Estimation/Camera Traps



# Pu'u Wa'awa'a and Pu'u Anahulu HCP Game Mammal Management Update

## HCP status

- HCP Public Review: November 2015
- EA Public Review: January 2016
- Address Public Comments: April 2016 - present
- Draft HCP to ESRC: September 2017
- Revised EA to contractors: Fall 2017
- HCP and EA to the Board: Spring 2018

# Pu'u Wa'awa'a and Pu'u Anahulu HCP Game Mammal Management Update

Summary of animals captured:

- Adult females captured: 35
- Adult males captured: 33
- Female lambs captured: 5
- Male lambs captured: 9

**Total sheep captured and marked: 82**



# Pu'u Wa'awa'a and Pu'u Anahulu HCP Game Mammal Management Update

Summary of animals captured:

- Females fitted with GPS collars: 15
- Males fitted with GPS collars: 9
- Females fitted with VHF collars: 7
- Males fitted with VHF collars: 9

**Total GPS collars deployed: 24**

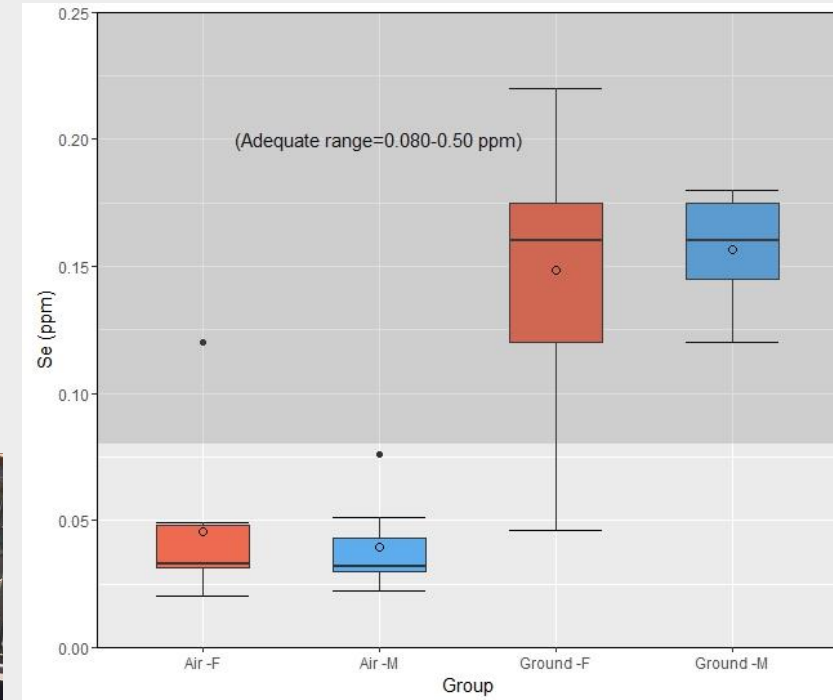
**Total VHF collars deployed: 16**



# Pu'u Wa'awa'a and Pu'u Anahulu HCP Game Mammal Management Update

## Blood Samples:

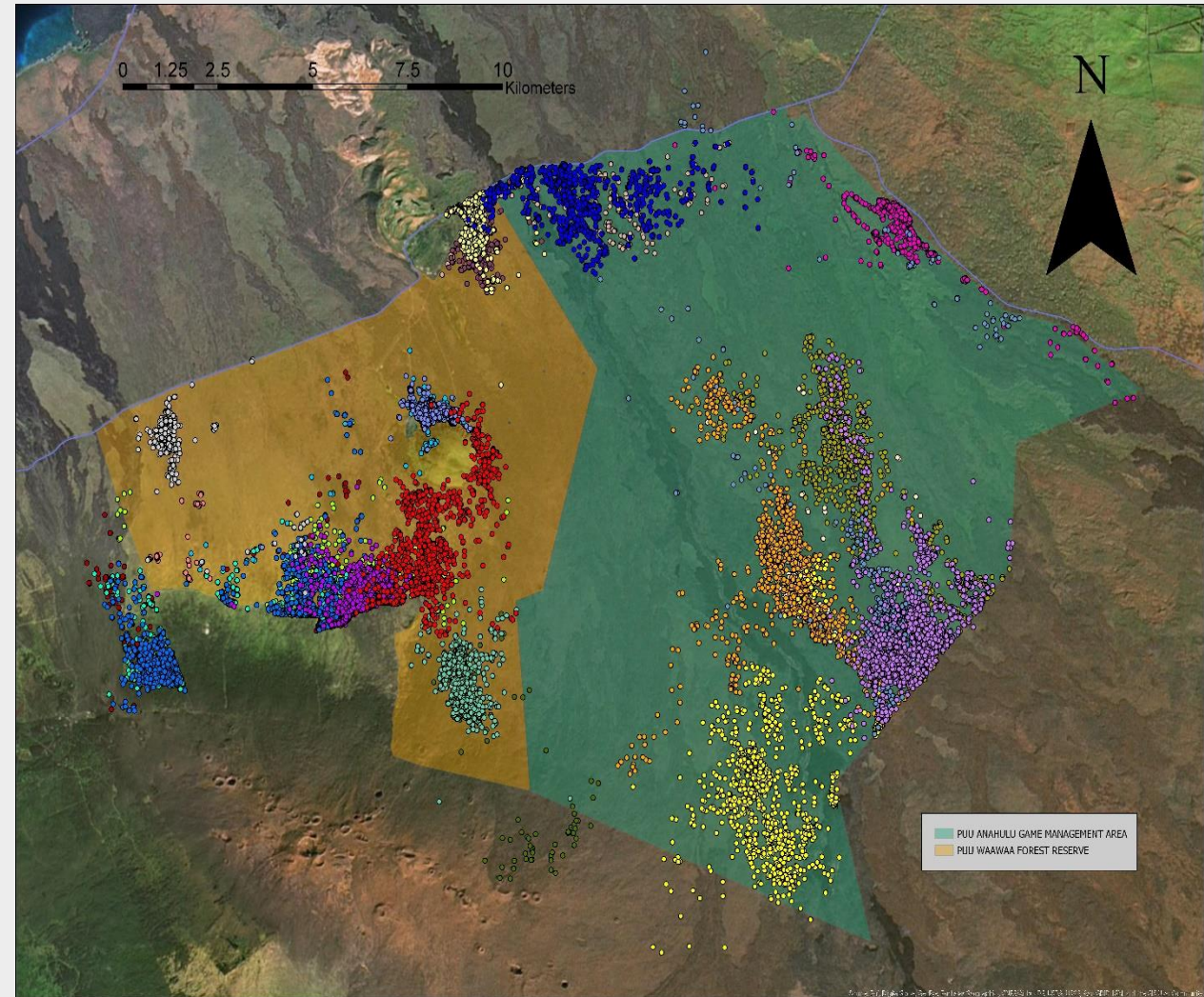
- Mineral Profile
- DNA Analysis
- Pregnancy Test



# Pu'u Wa'awa'a and Pu'u Anahulu HCP Game Mammal Management Update

## Home Range and Movements:

- Home Range Size: 12.73 square km to 13.35 square km
- Average Distance Moved: 7.27 km



# Pu'u Wa'awa'a and Pu'u Anahulu HCP Game Mammal Management Update

## Survival

- 3 mortalities. All predated by wild dogs
- Predator control ongoing
- Annual survival estimates for adults is 90%



# Pu'u Wa'awa'a and Pu'u Anahulu HCP Game Mammal Management Update

