

## DeVera, Ashley

---

**From:** Joanne Iglesias <joannei@g70.design>  
**Sent:** Thursday, June 29, 2023 5:15 PM  
**To:** Planning Internet Mail  
**Cc:** Marketing  
**Subject:** County of Hawai'i Planning Department for the Fiscal Year 2023-2024  
**Attachments:** G70\_County of Hawaii\_Planning Department\_PL.7.pdf

**Categories:** Yellow Category

Aloha Mr. Kern:

G70 is pleased to express our interest in providing professional services to the County of Hawai'i, Planning Department for the Fiscal Year 2023-2024. We are requesting consideration for the following category:

**PL.7) Community Planning (Public Access Planning)**

Please let us know if you have questions or need any additional information.

Mahalo,



**Joanne Iglesias**  
Marketing Assistant

111 S. King Street, Suite 170  
Honolulu, Hawaii 96813  
t 808.523.5866  
e [joannei@g70.design](mailto:joannei@g70.design)  
[www.G70.design](http://www.G70.design)

**County of Hawai'i**  
**Planning Department**

NOTICE TO PROVIDERS OF PROFESSIONAL SERVICES  
for fiscal year 2023-2024

**Letter of Interest and Statements of Qualifications for  
PL.7) Community Planning (*Public Access Planning*)**

Prepared for:  
Mr. Zendo Kern, Planning Director  
Planning Department  
County of Hawai'i  
101 Pauahi Street, Suite 3  
Hilo, HI 96720

June 30, 2023



*letter of interest*



111 S. King Street  
Suite 170  
Honolulu, HI 96813  
808.523.5866  
www.g70.design

June 30, 2023

Mr. Zendo Kern, Planning Director  
Planning Department  
County of Hawai'i  
101 Pauahi Street, Suite 3  
Hilo, HI 96720

**Subject: Statement of Qualifications & Letter of Interest  
Planning Department, County of Hawai'i for Fiscal Year 2023-2024**

Dear Mr. Kern:

G70 is pleased to express interest in providing professional services to the County of Hawai'i Planning Department for the Fiscal Year 2023-2024 in the following categories:

**PL.7) Community Planning (Public Access Planning)**

Established in 1971, G70 is Hawai'i's largest full service multi-discipline design firm providing integrated services for sustainable development in architecture, civil engineering, planning and environment, geographic information systems, technology, and interior design. Our team brings a collective high level of talent unique in our approach and broad thinking from typical firms. G70's team will:

- ✓ **Create Value** – understanding our client, culture and community to design innovative solutions that deliver a successful project on time, and on budget.
- ✓ **Provide a “One Stop Shop” of Skilled Professionals** - collaborative and multidiscipline team of professionals including engineers, planners, architects, interior designers, information technologists, cultural specialists, software engineers, GIS technicians, graphic designers, asset managers, and communications personnel.
- ✓ **Be Culturally Relevant in Design and Project Management** – years of experience and involvement with the local culture, community and government agencies allow us to deliver successful projects.
- ✓ **Promote Sustainable Principles** – delivering solutions that consider the context of the project using a cross discipline, life cycle perspective to integrate and protect resources and the community.
- ✓ **Leverage Technology** – knowledge and ability to utilize technological tools to provide efficient and valued added service.

**1. The name of the firm or person, contact information including email address, the principal place of business, and location of all of its offices;**

Name of firm: Group 70 International dba G70  
Firm Address: 111 S. King Street, Suite 170  
Honolulu, HI 96813

Contact Person: Kāwika McKeague, AICP, Principal Planner  
Email Address: [kawikam@g70.design](mailto:kawikam@g70.design)  
Phone number: (808) 523-5866

**2. The age of the firm and its average number of employees over the past five years:**

G70 was founded in 1971. We have averaged 100 employees over the past five years and we currently have 107 employees.

**3. The education, training, and qualifications of the individual, or if a firm, its key employees in accordance with HRS 103D-304 and/or the professional and scientific occupation series contained in the United States Office of Personnel Managements' Qualifications Standards Handbook:**

Please see Resumes of Key Personnel

**4. A list of recent projects and the names of up to five clients who may be contacted, including at least two for whom services were rendered during the preceding year:**

- Pu'u 'Ōpae Kuleana Homestead Settlement Plan
- Anahola Kuleana Homestead Settlement Plan
- King's Landing Kuleana Homestead Settlement Plan
- Hāna Health Master Plan Specialty Clinic, Agriculture Wellness and Workforce Housing Project
- Kūkulu Kumuhana O Anahola (KKOA), Ulupono Anahola Agricultural Center
- Dynamic Community Solutions, Pu'uhonua o Wai'anae Village
- Namahana School Masterplan
- Board of Water Supply – Waihe'e Riparian Learning Center Master Plan
- Keaukaha Pana'ewa Farmers Alliance (KPFA), Resiliency and Agricultural Innovation Hub
- Hui o Hau'ula Ko'olauloa Community Resilience Hub
- Department of Hawaiian Home Lands – Malama Cultural Park Special Area Plan
- Kokua Kalihi Valley, Ho'oulu 'Āina Master Plan
- Kuilima Agricultural Park Master Plan
- Kauluakalana Makali'i Master Plan
- Ka 'Ohana o Kalaupapa, Kalaupapa Memorial
- Department of Hawaiian Home Lands & Papakōlea Community Development Corporation – Native Hawaiian Education Cultural Center and Kūpuna Assisted Living Center Master Plan
- KUPU, Ho'okupu Center
- Kualoa Ranch
- La'i'ōpua Community Center
- Kamehameha Schools – Kapaeloa Cultural Learning Project
- Kalāhuipua'a Fishpond – Environmental & Cultural Restoration Plan Due Diligence
- PA'I, Ke'ehi Arts and Cultural Center
- Pālailai Community Based Renewable Energy
- Kamehameha School – North Shore Plan

Client References		
Name	Organization	Phone Number
Mr. Barry Usagawa	City and County of Honolulu – Board of Water Supply	(808) 748-5900
Mr. Andrew Choy	Hawai'i State Department of Hawaiian Home Lands, Hawaiian Homes Commission, Planning Office	(808) 620-9279
Ms. Hilarie Alomar	Kamehameha Schools, Planning & Development Division	(808) 523-6223
Mr. John Leong	Pono Pacific	(808) 356-3259

**5. Any promotional or descriptive literature which the individual or firm desires to submit.**

We have provided supporting data for G70 to include:

- Company Profile
- Key Personnel Resumes
- Project Profiles

We appreciate your consideration of our firm for the above listed category. Should you have any questions, please contact me at (808) 523-5866 or by email at [kawikam@g70.design](mailto:kawikam@g70.design).

Sincerely,



Kāwika McKeague, AICP  
Po'ō Lelehua (Planning Principal)

*company profile*

# about g70

## FULL SERVICE

Established in 1971, G70 is Hawaii's largest full service multi-disciplined design firm providing integrated services for sustainable development in architecture, interior design, civil engineering, and planning & environmental services. We have specific expertise in design for resort communities, residential projects, educational and medical facilities, mixed-use commercial ventures, utilities and roadway infrastructures, and all phases of master planning for major land holdings.

## CREATING VALUE

Based in Honolulu, G70 is staffed with over 100 full-time professionals, including: licensed architects, interior designers, civil engineers, planners, technical specialists, and other support personnel. The firm is on the forefront of sustainable design practices with 33 LEED (Leadership in Energy and Environmental Design) accredited professionals in all areas of service.

## CULTURALLY RELEVANT

G70 is about stewardship. Our work begins with understanding our client, the host culture of each project, and the surrounding community. We work with communities to create designs that not only best serve the people, but also incorporate the cultural, historical and environmental aspects of the land.

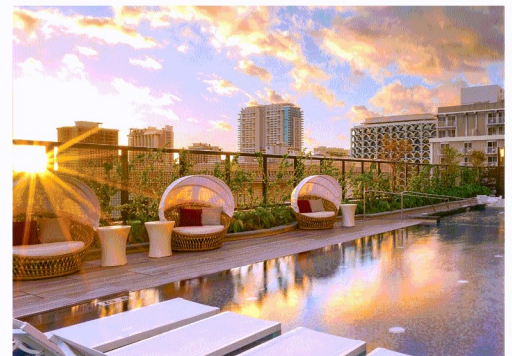
## SUSTAINABLE DESIGNS

Sustainable principles cross all disciplines in project development from planning to design, integrating land resource management and cultural heritage with cutting edge sustainable technology. G70 offers sustainable design methods and tools to plan, build, and monitor the utilities and infrastructure of a project site. We provide asset management resources to maintain, secure, and optimize operating costs for land owners and developers.

## TECHNOLOGY

G70 is progressive in its use and application of design software to enhance visualization and bring efficiency to the design process. Our current list of software being utilized is:

- Revit 2018, 2020
- Dynamo Revit
- AutoCad 2018, 2020
- SketchUp Pro 2019
- Photoshop
- Illustrator
- InDesign
- Rhino 7
- BIM 360
- Google Earth Pro
- Grasshopper Arc GIS
- Lumion 11.5
- Civil 3D 2018, 2020
- Arc GIS
- Infracore



# *G70 services*

## ARCHITECTURE

G70 designs architecture that represent the lifestyles of communities and respect the natural landscape surrounding each project. Our emphasis on cultural context, honoring traditional values, combined with contemporary innovation and planning of sustainable environments creates harmonious, memorable designs for our future.



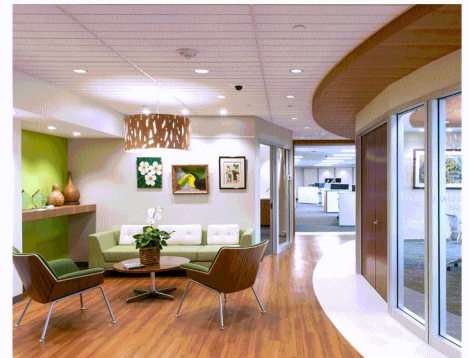
## CIVIL ENGINEERING

Civil Engineering Consulting Services include the full range of services for a civil consulting firm. Our capabilities are broadened significantly with the overlapping services and abilities of G70, including Planning and Environmental Services, Land-Use Permitting, Architecture, Sustainable Development, GIS and Geospatial Services, and Asset Management.



## INTERIOR DESIGN

We believe that interior spaces should have a timeless quality and compliment the architectural style of its environment. Our team includes architects specializing in interior design. We offer custom designed finishes, furniture and architectural elements that offer signature details to enhance our client's individual style.



## PLANNING & ENVIRONMENT

G70 provides comprehensive services to meet the challenges in the planning of communities, regions and the preservation of land resources. We engage the community in the process, assess the land, and prepare the necessary documents to expedite the due diligence process in a timely manner.



# planning and environment

## Services Overview

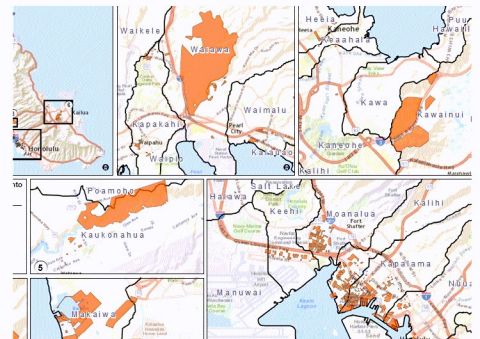
G70 provides a variety of services to meet the complex challenges of planning land resources and diverse communities with a sustainable future. Our extensive experience in all phases of the development process includes Master Planning, Community Building and Land Use Entitlements. We are staffed to manage large-scale Environmental and Physical Planning with architecture to create appealing, sustainable settings.

Our urban and environmental planners collaborate with in-house cultural experts, as well as solicit community input to incorporate historical and cultural elements in our planning process. Before proceeding with any project, we ensure that our environmental studies and land use plans are accepted by the community and the approving agencies.

G70 provides landowners and government agencies with the full range of land use permitting and entitlement services at both the State and County levels.

G70 planning services include:

- Community Master Plans
- Resort Master Plans
- Educational Campus Plans
- Regional, General and Specific Plans
- Urban Design Plan / Design Guidelines
- Park and Open Space Plans
- Community Involvement and Facilitation
- Feasibility Studies and Alternatives Analysis
- Land Use Permits
- Development Constraints Analysis (regulatory, environmental, technical)
- Regional and Area-wide Land Use Planning
- Detailed Property and Site Assessments, and Due Diligence Reporting
- Environmental Assessments and Environmental Impact Statements
- Cultural & Historic Resource Management



# planning and environment

## Culture and Community

G70 realizes the importance of culture and sustainability in all planning projects. Our approach is best described as 'place making.' We work with communities and indigenous peoples to create designs that not only serve the people, but also incorporate the cultural, historical and environmental aspects of the land and those who live on it. We are taking this process and applying it to other lands and host cultures internationally, with projects in Tahiti, Vietnam, New Caledonia, and India.

G70 places a special emphasis on collaborating with community groups and key individuals to resolve environmental concerns on new project developments. Before proceeding with any project, we ensure that our environmental studies and land use plans are accepted by the community and the official approving agencies. We provide a variety of opportunities for community support and involvement with our projects, including:

*Project conceptualization through a unique 5-step charrette process*

1. *Community information meetings, project newsletters and information materials*
2. *Interviews of key community organizations and individuals*
3. *Synopsis of technical issues understandable to lay people*
4. *Creation and management of community advisory committees*
5. *Establishment of a community-based support network*

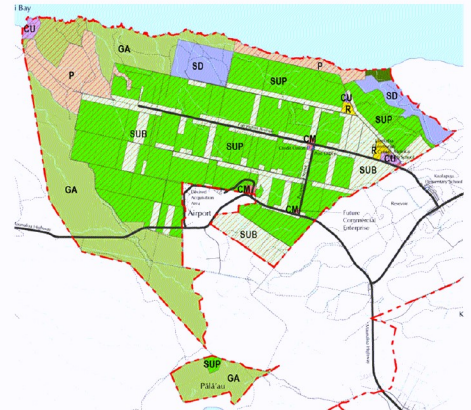
In addition, we provide GIS development for clients requiring needs assessments, requirements analysis, data collection and conversion, application development, geo-database design/creation, mapping, and data modeling and analysis.

At G70 we establish a clear project task that describes how GIS will be applied and support each project. Whether the task is to implement an interactive tool for accessing useful information through online maps or to conduct complex analysis of both geospatial and non-geospatial data, we deliver high quality GIS products to our clients.

Our GIS Services group consists of a multi-disciplinary team of GIS/Geospatial professionals, GIS-trained planners, GIS-trained architects, and GIS-trained graphic designers working across the company as an integrated technology team.



*Tahiti Waterfront, Papeete, Tahiti*



*Department of Hawaiian Home Lands  
Moloka'i Island Plan, Moloka'i*



# sustainable design

## Approach

### Honor & Integrate

With a deep understanding of an area's culture, heritage, and history at the onset of the design process, G70 is able to create distinctive, award-winning environments, richly appealing, harmonious and increasing in value over time. This is the foundation of good planning and design.

### Respect & Understand

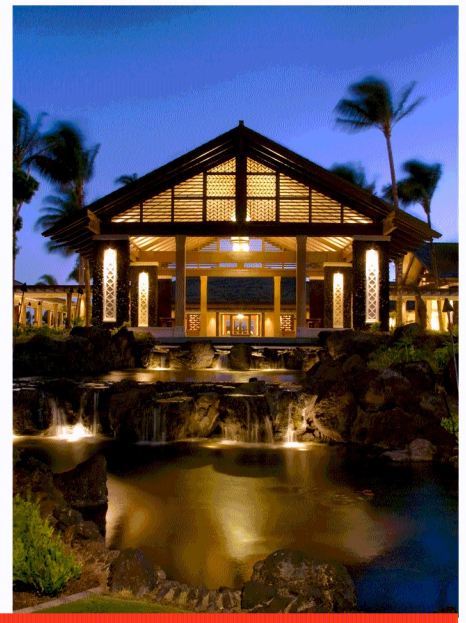
We are committed to sustainable design principles, approaching each project with in-depth research of the site, to understand its environmental context, geological and topographical features, wind and solar characteristics, and historical and cultural background. We provide innovative GIS and 3D visualization to assist in planning, design and decision making.

### Plan & Maintain

G70 offers sustainable design methods and tools to plan, build, and monitor the utilities and infrastructure of a project site. With GIS capabilities and state-of-the-art software, we provide asset management resources to maintain, secure, and optimize operating costs for developers.

### Lead Future Design

Our mission is to foresee a sustainable future now: to initiate, plan, design and build the best-in-class projects that demonstrate leadership in the global sustainability theater.



# sustainable design

## Innovation

## Expertise

G70 is on the cutting edge of sustainable development, recognizing the importance and impact of built environments of all types and sizes on individual lives, whole communities, and the entire planet. The firm's resources include a growing number of in-house LEED AP architects, planners, and interior designers working strategically with our clients and partners.

## LEED Services:

- Pre-evaluation: identifying economically viable LEED compliance
- Certification: processing and documenting a project through design and construction
- Post-Certification: providing project asset management to ensure long term performance
- Water Efficiency Improvement Assessment
- Credit Products & Technologies Specification
- Credit Innovation & Design programming

## Accountability:

Our Sustainable Development Division created a proprietary methodology to map specific LEED components such as potable water consumption, graywater utilization, energy consumption, carbon footprint, waste generation, and open space. Following certification, G70 will monitor the ongoing performance of LEED certified projects. This innovative process ensures that the LEED building performs as designed throughout its life.



# select projects

## Planning & Environment

### Master Planning

UH Hawai'i Long Range Development Plan  
City of Kapolei Master Plan  
Princeville Resort Master Plan  
Keauhou Resort Community Master Plan  
DHHL Moloka'i and Kaua'i Master Plans  
Tahiti Tourism Outumaoro Master Plan  
Ho'opili Master Plan

*Honolulu, O'ahu*  
*Kapolei, O'ahu*  
*Princeville, Kaua'i*  
*Keauhou, Hawai'i*  
*Island of Moloka'i*  
*Tahiti*  
*'Ewa Beach, O'ahu*

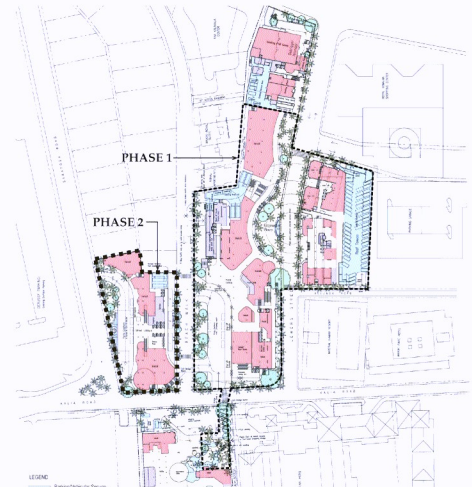


City of Kapolei Master Plan

### Environmental Services/EIS

Mauna Kea Science Reserve EIS  
Coconut Island Marine Science EIS  
Maka'iwa Hills Community EIS  
La'ie Community Master Plan EIS  
Kalaeloa Harbor EIS  
Hilton Hawaiian Village EIS  
Palamanui, North Kona EIS  
Maluhia at Wailea EIS  
Kapolei Haborside Center EIS  
Waikiki Beach Walk EIS  
Moku'ula Ecosystem Restoration Phase I  
Pelekane Watershed Ecosystem Restoration EA

*Mauna Kea, Hawai'i*  
*Kane'ohe, O'ahu*  
*'Ewa Beach, O'ahu*  
*La'ie, O'ahu*  
*Kalaeloa, O'ahu*  
*Waikiki, O'ahu*  
*Kona, Hawai'i*  
*Wailea, Maui*  
*Kalaelao, O'ahu*  
*Waikiki, O'ahu*  
*Island of Maui*  
*Island of Hawai'i*



Outrigger Waikiki Beach Walk

### Community Involment

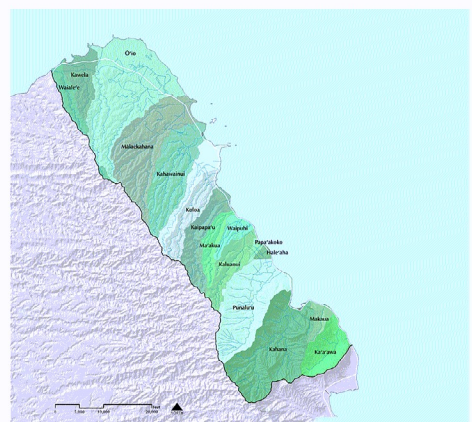
Kamehameha Schools North Shore Plan  
Hanauma Bay Nature Preserve Master Plan  
Kailua Town Master Plan  
Waialua Town Master Plan  
Keanae-Wailunui Cultural Landscape Study

*North Shore, O'ahu*  
*East Honolulu, O'ahu*  
*Kailua, O'ahu*  
*Waialua, O'ahu*  
*Island of Maui*

### Military Planning

MCAS Iwakuni Master Plan  
U.S. Navy Plans Various  
U.S. Army Hawai'i North-End Plan  
Real Property Master Plan Okinawa  
Ko'olau Loa Watershed Management Plan

*Yokota, Japan*  
*Various Locations*  
*Schofield Barracks, O'ahu*  
*Okinawa, Japan*  
*Island of O'ahu*



Ko'olau Loa Watershed Plan

*resumes*

# MARK KĀWIKĀ MCKEAGUE

AICP  
Principal Planner  
Director of Cultural Planning



Kāwika's background, experience, and passion provides a unique and knowledgeable approach to land use planning and cultural resource management. Kāwika effectively administers and advocates a Native Hawaiian perspective in environmental and land use planning, and architectural design and space programming. He brings over 25 years of experience in facilitating local and national level planning efforts for private, public, and non-profit sector clients. His work includes the preparation of Master Plans, Cultural Resource Management Programs, Environmental Impact Studies, and facilitating community dialogue.

## SELECTED PROJECTS:

**Kamehameha Schools - He'eia Master Plan**  
He'eia, O'ahu

**Kamehameha Schools - Cultural Resource Management Plan**  
State of Hawai'i

**Kamehameha Schools - North Shore Plan**  
Island of O'ahu

**Kamehameha Schools - Natural Resource Management Plan Update**  
State of Hawai'i

**Kamehameha Schools - Keauhou Bay Management Plan**  
Keauhou, Hawai'i

**Board of Water Supply - Ko'olau Loa Watershed Management Plan**  
Windward O'ahu

**Board of Water Supply Ha'ikū Stairs**  
He'eia, O'ahu

**Office of Hawaiian Affairs - Strategic Management Framework for Kaka'ako Makai**  
Honolulu, O'ahu

**Department of Hawaiian Home Lands & Papakōlea Community Development Corporation - Native Hawaiian Education Cultural Center & Kūpuna Assisted Living Center Master Plan**  
Puowaina, O'ahu

**Department of Hawaiian Home Lands - Ho'olehua Veteran Center - EA, Master Plan, CRM**  
Ho'olehua, Moloka'i

**Department of Hawaiian Home Lands - Moloka'i Island Plan**  
Island of Moloka'i

**Department of Hawaiian Home Lands - Waimea Nui Master Plan**  
Honolulu, O'ahu

**Department of Hawaiian Home Lands - Wai'anae Coast Emergency Access Road/ Parallel Secondary Access Road**  
Wai'anae, O'ahu

**Department of Hawaiian Home Lands - Pu'u Opae Special Area & Settlement Plan**  
Kekaha, Kaua'i

**University of Hawai'i at Mānoa - Hawai'i Institute of Marine Biology (Coconut Island), Master Plan, LRDP, EIS, CIA**  
Kāne'ohe, O'ahu

**Pelekane Bay - EA, Ecological Restoration Assessment**  
North Kohala, Hawai'i

**Kalaupapa Memorial**  
Kalaupapa, Moloka'i

**Mokuhinia and Moku'ula - Cultural Landscape & Ecological Restoration Plan**  
Lāhainā, Maui

**Department of Emergency Management O'ahu Coastal Communities Evacuation Planing Phase I**  
Island of O'ahu

**CNMI State Standard Mitigation Plan**  
Commonwealth of the Northern Mariana Islands (CNMI)

## PROFESSIONAL REGISTRATIONS & ASSOCIATIONS:

American Planning Association, Hawai'i Chapter (APA-HI), Member

Omidyar Fellow, 2019-2020

Hula Mamo Hawaiian Civic Club, 2012-2013

Lamda Alpha International Aloha Chapter, Member

Historic Hawai'i Foundation, Board of Trustees

Hawai'i Leeward Planning Conference (HLPC), Member

Native Hawaiian Chamber of Commerce, Member

PA'I Foundation, Board of Director 2001-2003; **President**, 2003-Present

O'ahu Island Burial Council, **Chair; Vice-Chair; 'Ewa Moku Representative**, 2005-2012

## EDUCATION:

**NAGPRA, ARPA Application & Requirement**  
National Preservation Institute

**Hawai'i State Foundation on Culture and the Arts, Folk and Traditional Arts Apprentice Program**  
Cyril Lani Pahinui

**Section 106: A Review for Experienced Practitioners**  
National Preservation Institute

**Consultation and Protection of Native American Sacred Lands**  
National Preservation Institute

**Master of Urban and Regional Planning**  
University of Hawai'i at Mānoa, HI

**Historic Preservation Graduate Certificate**  
University of Hawai'i at Mānoa, HI

**Identification & Management of Traditional Cultural Places**  
National Preservation Institute

**B.A. Political Science**  
University of Hawai'i at Mānoa, HI

**FEMA Certified HURRIPLAN Resilient Building Design Coursework**  
National Disaster Preparedness Training Center

**DeVos Institute of Arts Management at the Kennedy Center for Performing Arts**

**Leveraging Investments in Creativity Artography Cohort**

# JEFFREY H. OVERTON

AICP, LEED AP  
Principal Planner



As Principal Planner, Mr. Overton leads the preparation of Master Plans, environmental impact documents, land use permitting, and community involvement for private developments, military installations, and government projects. His experience spans over 35 years of Environmental Impact Statements and permitting for residential communities, infrastructure and utilities, renewable energy projects, government facilities, scientific installations, schools, resorts, commercial/mixed-use centers, and recreational facilities. Mr. Overton directs community and area-wide Master Plans, site selection studies and urban design plans, and provides expert testimony before State and County land use authorities.

## SELECTED PROJECTS:

**Kamehameha Schools - Kapālama Strategic Implementation Plan & Master Plan**  
Kapālama, O'ahu

**Kamehameha Schools - Kohou TOD Residential Development**  
Honolulu, O'ahu

**Kamehameha Schools - North Shore Lands Master Plan**  
North Shore, O'ahu

**Kamehameha Schools - Keauhou Bay Management Master Plan**  
Keauhou, Hawai'i

**Kamehameha Schools - Hale'iwa Store Lots Master Plan, Zone Change, Environmental Assessment**  
Hale'iwa, O'ahu

**Kamehameha Schools - Waipahu TOD Residential Development**  
Waipahu, O'ahu

**Kualoa Ranch - Master Plan, EA, Permits**  
Kualoa, O'ahu

**Kualoa Regional Park Wastewater Systems - EA, SMA Permit**  
Kualoa, O'ahu

**Koko Head District Park & Hanauma Bay Preserve - Master Plan, EIS, SMA, CDUP**  
Honolulu, O'ahu

**DTS Pearl Ridge Bus Terminal/TOD Master Plan, EA, Permits**  
Aiea, Oahu

**Ho'opili Community - Master Plan, Zone Change, Urban Design Plan**  
Kapolei, O'ahu

**Le Jardin Academy New Campus - Master Plan, EA, DP, Zone Change, SMA**  
Kailua, O'ahu

**HHFDC Affordable Housing - Master Plan, EA, SMA, 201H**  
Kahului, Maui

**Kamakana Villages at Keahuolu - Master Plan, EA, 201H**  
Kona, Hawai'i

**Kapolei Harborside Center - Master Plan, EIS, State Land Use, Zone Change**  
Kalaeloa, O'ahu

**Kapolei West Community - Master Plan, State Land Use, Zone Change**  
Kapolei, O'ahu

**Makaīwa Hills Residential Community - Master Plan, EIS, State Land Use, Zone Change**  
'Ewa, O'ahu

**Department of Education - Pu'u Kukui Elementary School - Master Plan, EA, Project District Application**  
Wailuku, Maui

**Moku'ula/Mokuhinea Historic Fishpond - Ecosystem Restoration Plan**  
Lahaina, Maui

**Manini'Ōwali Residential Community - Master Plan, EIS, State Land Use**  
Kona, Hawai'i

## PROFESSIONAL REGISTRATIONS & ASSOCIATIONS:

American Institute of Certified Planners (AICP), Member

Urban Land Institute (ULI), Member

O'ahu Economic Development Board, Chair

U.S. Green Building Council (USGBC) Leadership in Energy and Environmental Design Accredited Professional (LEED AP)

## EDUCATION:

**M. S. Marine Environmental Science**  
State University of New York, NY

**B. S. Zoology/Biology Oceanography**  
Duke University, NC

## PROJECT HONORS & AWARDS:

**Hale'iwa Store Lots - APA Hawai'i Environment/Preservation Award, 2015**

**Kamakana Villages at Keahuolu - APA Hawai'i Chapter Outstanding Planning Award, 2011**

**Kamehameha Schools North Shore Plan - APA National Planning Excellence Award, 2008**

**Waiialua Town Master Plan - APA Hawai'i Chapter Community-based Planning Award, 2005**

**Mauna Kea Science Reserve Master Plan - APA Hawai'i Chapter Outstanding Planning Award, 2000**

# TRACY CAMUSO

AICP  
Principal Planner



As an environmental and land use planner, Tracy brings more than 15 years of experience working on projects ranging from renewable energy, biofuels, agricultural developments, educational facilities, industrial parks, scientific research institutions, residential communities, and resort master plans. Through her experience working on public relations and policy issues in the Office of U.S. Senator Daniel K. Inouye and the Hawai'i State Legislature, Tracy utilizes her specialized knowledge of public policy and implementation to assist in the coordination with both community and government organizations. In her new role as Principal, she will continue to work closely with G70's management team to provide sustainable and holistic solutions for the local community.

## SELECTED PROJECTS:

### Aloha Solar Energy - Four 5MW Facilities - EA, Permits

Island of O'ahu

### Aloha Solar Energy Fund I, Lualualei

Lualualei, O'ahu

### Aloha Solar Energy Fund II, Kalaeloa

Kalaeloa, O'ahu

### AES Waiawa Solar Farm - LUC/Entitlement Support

Waiawa, O'ahu

### Clearway Waiawa Solar (36MW) - SLUBA, CUP, Waiver

Waiawa, O'ahu

### Clearway Mililani Solar (65MW) - CUP, Waiver

Mililani, O'ahu

### Department of Education - Wai'anae Elementary School Administration/ Student Center, EA

Wai'anae, O'ahu

### Department of Education - James Campbell High School Classroom Building, EA, Waiver

'Ewa, O'ahu

### Department of Land Management - Hale Mauliola, EA

Honolulu, O'ahu

### East Kapolei Solar Farm - Environmental Studies, CUP

Kapolei, O'ahu

### The Element by Westin Kapolei Hotel - CUP

Kapolei, O'ahu

### Embassy Suites Hotel - CUP Limited Service Hotel

Kapolei, O'ahu

### Farrington Highway Improvements - EA, Pre-Design

East Kapolei, O'ahu

### First Assembly of God Windward Church Redevelopment Expansion - EA, SMA, CUP

Kāne'ohe, O'ahu

### Halekua - Royal Kunia Phase II, PDH, Zoning Adjustment, UA

Kunia, O'ahu

### Hawaii Baptist Academy Elementary School Improvements - CUP, SDD

Nu'uuanu, O'ahu

### Hawai'i BioEnergy Kaua'i Algae Farm - Permitting Strategy, State/County Permits

Līhu'e, Kaua'i

### Hawai'i Film Studio - EA, SDD, Variance

Honolulu, O'ahu

### Hawai'i State Hospital - New Patient Facility, PRU Modifications

Kāne'ohe, O'ahu

### Hilton Hawaiian Village AMB Tower - SEIS, SMA, PDR, WSD

Honolulu, O'ahu

## PROFESSIONAL REGISTRATIONS & ASSOCIATIONS:

American Planning Association (APA), Member

American Institute of Certified Planners (AICP), Member

American Red Cross, Board Member

Waikīkī Improvement Association, Member

NAIOP Commercial Real Estate Development Association, Member

Urban Land Institute (ULI), Member; Urban Plan Participant

Women in Renewable Energy (WiRE), Member

Chamber of Commerce of Hawai'i, Member

Business Industry Association (BIA), Member

Hawaii Society of Business Professionals, Board Member

Patsy T. Mink Leadership Alliance Inaugural Cohort, 2016-2017

Pacific Century Fellows, Fellow 2019-2020

## EDUCATION:

Masters in Public Administration  
University of Hawai'i at Mānoa, HI

B. A. Political Science  
University of Hawai'i at Mānoa, HI

## HONORS & AWARDS:

Pacific Business News - Women Who Mean Business Awardee, 2019

Pacific Business News - Forty Under 40 Awardee, 2019

# TRACY CAMUSO

AICP  
Principal Planner

## SELECTED PROJECTS:

**Hilton Hawaiian Village Master Plan -  
EIS, SMA, PDR, WSD**

Honolulu, O'ahu

**Hilton Hawaiian Village Sea Level Rise -  
SLR Assessment**

Honolulu, O'ahu

**Ho'opili Community - Zone Change**

Kapolei, O'ahu

**Ho'ohana Solar Farm (52MW) - EA, CUP**

Kunia, O'ahu

**Hyatt Hotel at Ho'opili - CUP**

Kapolei, O'ahu

**Hyatt Regency Retail Redevelopment -  
EA, SMA, SDD**

Honolulu, O'ahu

**Hyatt Regency Waikīkī Beach Resort -  
EA, SMA, SDD**

Honolulu, O'ahu

**Iolani School - CUP, JDA**

Honolulu, O'ahu

**Kaena Point Tracking Station -  
NEPA, EA**

Wai'anae, O'ahu

**Kapolei Energy Storage Park -  
Entitlement Modifications**

Kapolei, O'ahu

**Kapolei Haborside Center -  
EIS, Zone Change**

Kalaeloa, O'ahu

**Kapolei West Community -  
EIS Zone Change**

Kapolei, O'ahu

**Kalia Wastewater Improvements -  
NEPA, EA**

Honolulu, O'ahu

**Lā'ie Inn Redevelopment -  
EA, SMA Permit**

Lā'ie, O'ahu

**Lā'īapala Makai & Heights, Zone Change**

Kalaeloa, O'ahu

**Leihano Senior Village CCRC - CUP,  
UA Status Updates**

Kapolei, O'ahu

**LRE Mahi Solar (120 MW) -  
SUP, CUP, Waiver**

Kunia, O'ahu

**Marriott Residence Inn -  
CUP Limited Service Hotel**

Kapolei, O'ahu

**Maka'iwa Hills - EIS, Zone Change**

Kapolei, O'ahu

**Outrigger Reef Waikīkī Beach Resort -  
SEIS, SMA, SSV**

Honolulu, O'ahu

**Outrigger Waikīkī Beach Walk -  
EIS, SMA, County Permits**

Honolulu, O'ahu

**Prince Waikīkī - SMA, WSD**

Honolulu, O'ahu

**PAR Petroleum Expansion -  
CUP, Height Variance**

Kapolei, O'ahu

**Phycal Algae Pilot Project -State/NEPA EA**

Wahiawa, O'ahu

**Pūlama Lāna'i Farm Labor Dwellings -  
CUP**

Kaumālapa'u Highway, Lāna'i

**Queen's Medical Center - West O'ahu, PRU  
Modifications**

'Ewa Beach, O'ahu

**State Film and Digital Media Center -  
EA, SMA Permit**

Honolulu, O'ahu

**Salvation Army Residence Facilities -  
Land Use Permitting**

Honolulu, O'ahu

**TopGolf Hawai'i -  
EA, Special District Permit**

Honolulu, O'ahu

**University of Hawai'i at Mānoa -  
C-MORE Hale, EA**

Honolulu, O'ahu

**UOP Integrated Biorefinery - Permitting  
Strategy, State/County Permits**

Kalaeloa, O'ahu

**U.S. Army Training Areas O'ahu -  
Environmental Condition of  
Properties (ECoP)**

Central, O'ahu/North Shore, O'ahu

**Waikīkī Beachcomber - SSD**

Honolulu, O'ahu

**Westin Maui Resorts & Spa -  
Adult Pool and Landscaping SMA (m)**

Kā'anapali, Maui

# CAMI KLOSTER

AICP, LEED AP  
Senior Associate  
Senior Planner



Cami serves as project manager for major assignments. She is responsible for the effective preparation of land use master plans, watershed planning studies, and environmental impact documents for government, institutional, and private sector clients. She has over 20 years of professional experience and specialized knowledge and experience in the watershed environments of Hawai'i and facilitation of local planning efforts with community groups.

## SELECTED PROJECTS:

**City & County of Honolulu - NPDES Storm Water Permit Education & Outreach**  
Island of O'ahu

**City & County of Honolulu - Storm Water Utility Communication & Outreach**  
Island of O'ahu

**Board of Water Supply - Watershed Management Plans**  
North Shore & Windward O'ahu

**Kamehameha Schools North Shore Plan and Community Outreach**  
North Shore, O'ahu

**U.S. Army Corps of Engineers - West Maui Watershed Plan**  
Island of Maui

**Kamehameha Schools - Food Initiatives & Trends**  
North Shore, Central O'ahu, 'Ewa, O'ahu

**Kamehameha Schools - Cultural Resource Management Plan**  
State of Hawai'i

**Waialua Town - Master Plan**  
Waialua, O'ahu

**County of Kaua'i - Impact Fee Study**  
Island of Kaua'i

**COMANVREG Hawaii Overview and Regional Interaction Plans**  
Pearl Harbor, O'ahu; Sasebo, Yokosuka, and Atsugi, Japan

**U.S. Navy - Base Exterior Architecture Plans**  
Pearl Harbor, O'ahu; Sasebo, Yokosuka, and Atsugi, Japan

## PROFESSIONAL REGISTRATIONS & ASSOCIATIONS:

American Institute of Certified Planners (AICP), Member

American Planners Association (APA), Member

U.S. Green Building Council (USGBC) Leadership in Energy and Environmental Design Accredited Professional (LEED AP)

## EDUCATION:

**M.S. Environmental Studies**  
Yale University, CT

**B.S. Environmental Science**  
Washington State University, WA

# BARRIE FOX MORGAN

AICP  
Associate  
Senior Environmental Planner



Barrie is an environmental planner specializing in terrestrial and marine resources with nearly 30 years of experience in Hawai'i and the Pacific. She prepares environmental impact statements and environmental assessments for county, state, federal and private clients. Skilled in collecting and analyzing data, Barrie excels in presenting technical data in clear, understandable language for decision-makers. Previously, she managed remote natural areas in Hawai'i and a marine field research station in the Pacific, and was the technical writer for a renewable energy research institute.

## PROFESSIONAL REGISTRATIONS & ASSOCIATIONS:

American Institute of Certified Planners  
(AICP), Member

American Planning Association (APA),  
Members

## EDUCATION:

B.A. Environmental Conservation  
University of Hawai'i at Mānoa, HI

## SELECTED PROJECTS:

### Adventist Health Castle - Master Plan, EIS

Kailua, O'ahu

### Board of Water Supply - North Shore O'ahu Watershed Master Plan

Mokulē'ia to Waiale'e, O'ahu

### DBEDT Creative Media Film Production Facility - Site Evaluation

O'ahu

### Hawai'i Dairy Farms - Environmental Impact Statement

Mahaulepu, Kaua'i

### Hawai'i Natural Energy Institute - Technical Report Preparation\*

Honolulu, O'ahu

### Honolulu International Airport - CatEx and Declaration of Exemptions\*

Honolulu, O'ahu

### Department of Transportation, Harbors Division - Kala'eloā Barbers Point Harbor - 2040 Master Plan, Fuel Pier Design, EIS

Kala'eloā, O'ahu

### Kanapu'u Drive Estate Residence - Environmental Assessment, CDUP, Permits

Kona, Hawai'i

### Kona Bali Kai Seawall Repairs - SMAA

Kailua, O'ahu

### Pupukea Rural Center - EIS & SMA

North Shore, O'ahu

### U.S. Army Corps of Engineers - West Maui Watershed Plan

Island of Maui

### U.S. Army Garrison Hawai'i - Pohakuloa Training Area, NEPA/HEPA EIS

Pohakuloa, Hawai'i

### Management Plans for Watershed and Unique Private Lands\*

Statewide

### Palmyra Atoll - Remedial Action for Hospital Landfill\*

Palmyra Atoll, USA

### Palmyra Atoll - Spill Prevention, Control, Countermeasure Plan\*

Palmyra Atoll, USA

### Tesla EV Charging Stations - SMA

Multiple Locations, O'ahu

\*Project Work Prior to G70

# STEPHANIE YING SAEPHAN

GISP  
GIS Manager



Ms. Saephan holds a Masters degree in Botany from the University of Hawai'i at Mānoa, and a Bachelor of Arts in Geography from Clark University. She has been working in the GIS field for over 20 years, providing GIS services, including web-based mapping applications, spatial analyses and modeling, training, and needs-assessment for various projects ranging from ecological/conservation to renewable energy and housing/mortgage studies in the research/ academic, government, and corporate environments. Prior to joining G70, Ms. Saephan headed the joint, Botany and the Pacific Cooperatives Studies Unit GIS research lab at UH Mānoa.

## SELECTED PROJECTS:

**O'ahu Coastal Communities  
Evacuation Planning**  
Island of O'ahu

**County of Kaua'i - Community Plan GIS**  
Island of Kaua'i

**City and County of Honolulu  
NPDES Storm Water Public  
Education Project**  
Island of O'ahu

**NAVFAC Hawai'i Natural Resources  
and Cultural Resources GIS**  
State of Hawai'i

**U.S. Army Corps of Engineers -  
West Maui Watershed Study**  
Island of Maui

**Interisland Cable Web Mapping  
Application\***  
Islands of Lāna'i, Moloka'i, and O'ahu

**University of Hawai'i at Mānoa, School of  
Architecture - Building Information  
Modeling Project\***  
Honolulu, O'ahu

**Biocomplexity of Avian Malaria on  
Hawai'i Island\***  
Island of Hawai'i

**University of Hawai'i at Mānoa, Botany  
Dept. and Pacific Cooperative Studies  
Unit - 3D Modeling of Algal N<sub>15</sub> Plume  
(Nitrogen-enriched Effluent) Off the West  
Coast of Maui\***  
Island of Maui

**GIS-Based Model to Aid Management of  
O'ahu's Wetlands\***  
Island of O'ahu

**Joint Center for Housing Studies at  
Harvard University\***  
United States

**U.S. Department of Housing and Urban  
Development Funded Project\***  
United States

**Hilo Harbor Improvements -  
HRS 343 Compliance**  
Hilo, Hawai'i

## PROFESSIONAL REGISTRATIONS & ASSOCIATIONS:

Certified Geographic Information  
Systems Professional (GISP)

## EDUCATION:

**Masters of Science in Botany**  
University of Hawai'i at Mānoa, HI

**Bachelor of Arts in Geography**  
Clark University, Worcester, MA

# CODY WINCHESTER

DMHA, AICP  
Environmental & Land Use Planner



Cody has 6 years of professional experience in Hawai'i, and specializes in Disaster Management and Community-Based Resiliency Planning. He prepares environmental impact documents, applications for various land use permits, master plans, design guidelines and technical assessments of climate change factors. Cody excels in presenting technical data in clear, understandable language for decision-makers. He is certified through FEMA with Community Planning for Disaster Recovery, Volcano Crisis Awareness, and Decision Making. He has also trained with the American Red Cross in Disaster Assessment and Sheltering Services and is a board member of the Hawai'i Wildfire Management Organization. Prior to joining G70, Cody worked on coastal hazard adaptation research and training programs at the National Disaster Preparedness Training Center (NDPTC).

## SELECTED PROJECTS:

**1 Hotel SMA Permit**  
Princeville, Kaua'i

**AES - West Kaua'i Renewable Energy**  
Kekaha, Kaua'i

**Board of Water Supply - Ha'ikū Stairs EIS**  
Kāne'ohe, O'ahu

**City and County of Honolulu - Emergency Operations Center EA**  
Honolulu, O'ahu

**Department of Hawaiian Home Lands - Pu'u 'Ōpae Special Area Plan**  
Waimea, Kaua'i

**Department of Hawaiian Home Lands - Anahola Kuleana Settlement Plan**  
Anahola, Kaua'i

**Department of Hawaiian Home Lands - Malama Cultural Park Special Area Plan**  
Kaunakakai, Moloka'i

**Department of Hawaiian Home Lands - Wai'anae Coast Emergency Access Road**  
Wai'anae, O'ahu

**Department of Transportation - Hilo Harbor Improvements**  
Hilo, Hawai'i Island

**Department of Transportation - Hawai'i Seat Belt Use Study**  
Honolulu, O'ahu

**Department of Transportation - Kahului Harbor Improvements**  
Kahului, Maui

**Hilton Hawaiian Village Sea Level Rise Adaptation Study**  
Honolulu, O'ahu

**HoKua Place Climate Change Analysis**  
Kapa'a, Kaua'i

**Kamāmalu Park Improvements**  
Honolulu, O'ahu

**Ko'olauloa Resilience Hub EA**  
Hau'ula, O'ahu

**Kamehameha Schools - Keauhou Bay Management Plan EIS**  
Kailua-Kona, Hawai'i Island

**Keaukaha Panaewa Resilience Hub**  
Hilo, Hawai'i Island

**LRE Pūlehu Solar Climate Change Analysis**  
Kula, Maui

**LRE Mahi Solar GHG Analysis**  
Kunia, O'ahu

**National Park Service & Ka O'hana O Kalaupapa Memorial**  
Kalawao, Kalaupapa

**Park Hotels Ala Moana EIS, SMA**  
Waikīkī, O'ahu

## PROFESSIONAL REGISTRATIONS & ASSOCIATIONS:

American Institute of Certified Planners (AICP), Member

American Institute of Certified Planners (AICP), Committee Chair

Toastmasters

Hawai'i Wildfire Management Organization, Board Member

## EDUCATION:

**Master of Urban and Regional Planning**  
University of Hawai'i at Mānoa, HI

**Disaster Management and Humanitarian Assistance (DMHA) Certificate**  
University of Hawai'i at Mānoa, HI

**B. S. Geology**  
Oklahoma State University, OK

*\*Project Work Prior to G70*

# CODY WINCHESTER

DMHA, AICP  
Environmental & Land Use Planner

## SELECTED PROJECTS:

**Punalu'u Shoreline Protection Project**  
Honolulu, O'ahu

**United States Air Force - Kaena Point  
Satellite Tracking Station Helipad NEPA  
EA**  
Wai'anae, O'ahu

**Island Community Resilience Initiative:  
Incorporating Lessons from Hurricane  
Maria into the O'ahu Resilience Strategy\***  
Honolulu, O'ahu

**Risk Perception Analysis of Homeless  
Individuals in Waikiki\***  
Honolulu, O'ahu

**Coastal Hazard Adaptation Research and  
Training Program\***  
Honolulu, O'ahu

**Testing Alternative Ground-Based Cloud  
Liquid Water Content Measurement  
Methods for Estimating Cloud Water  
Interception in Tropical Montane Cloud  
Forests\***  
Honolulu, O'ahu

**Coastal Hazard Awareness Training  
Program - National Disaster  
Preparedness Training Center (NDPTC) \***  
Honolulu, O'ahu

**Coastal Hazard Assessment and  
Planning Tools - National Disaster  
Preparedness Training Center (NDPTC)  
Training Program\***  
Honolulu, O'ahu

**Waikiki Pre-Disaster Recovery Planning  
Project Recommendations for Future  
Planning\***  
Honolulu, O'ahu

**Analysis of Impediments to Disaster  
Recovery Following the 2006 Mud  
Volcano Eruption in Sidorajo, Indonesia\***  
Honolulu, O'ahu

**Waikiki Point-in-Time Homeless Count  
Study\***  
Honolulu, O'ahu

**Hawai'i Island Hydrolic Evaluation,  
Resource Mapping and Exploratory  
Drilling Program\***  
Hilo, Hawai'i Island

**National Aeronautics and Space  
Administration - Analysis of African  
Biomass Burning Over the South  
East Atlantic and its Interaction with  
Stratocumulus Clouds\***  
Washington, DC

**Geophysical Characterization of the  
Okavango Rift Zone - NW Botswana\***  
Stillwater, Oklahoma

*\*Project Work Prior to G70*

*project profiles*

# Department of Hawaiian Home Lands Pu'u 'Ōpae Special Area Master Plan

KEKAHA, WAIMEA, KAUA'I

Panning towards developing a comprehensive strategy of kuleana homesteading for approximately 140 .5-acre subsistence agricultural and pastoral lots on approximately 1,440 acres of land in Kekaha, Waimea, Kaua'i. Also includes community use and economic development targeted to larger scale agricultural opportunities, i.e. orchards, and restoration of native ecosystem and continuance of subsistence hunting practices. Work include community outreach with beneficiaries with technical support on natural and cultural resource management, conservation practices, wildfire management, and community economic development.

## PROJECTS FACTS

**Client:** Department of Hawaiian Home Lands

## SERVICES PROVIDED

Planning & Environment  
Community Facilitation  
Mixed-Use Planning



# Honolulu Board of Water Supply Waihe'e Lo'i Restoration and Riparian Learning Center

WAIHE'E, O'AHU

The Waihe'e Lo'i Restoration and Riparian Learning Center in Waihe'e, O'ahu will restore traditional lo'i kalo and the stream environment through community involvement and education that re-instills a sense of shared kuleana for watershed management in Waihe'e Valley. Proposed activities include restoring existing fallow lo'i; help maintain existing 'auwai system used by the taro farmers downstream; and restore riparian and forest areas with appropriate native and non-invasive plants. G70 performed all environmental engineering and surveying services in connection with the Environmental Assessment.

## PROJECT FACTS

**Client:** Honolulu Board of Water Supply

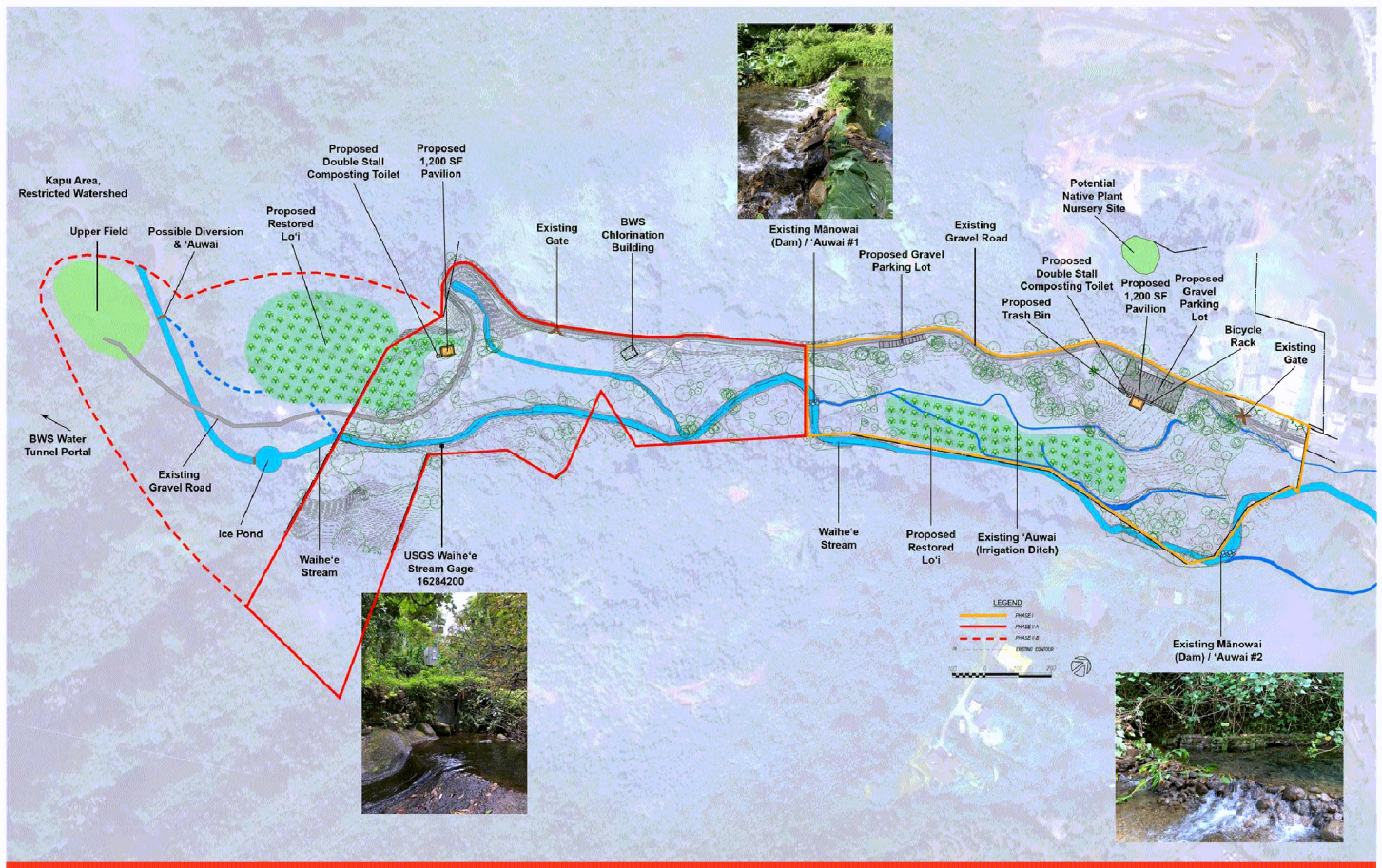
**Size:** 27 acres

**Completion:** January 2021

## SERVICES PROVIDED

Planning & Environment

Environmental Assessment



# Department of Hawaiian Home Lands Anahola Settlement Plan

## ANAHOLA, KAUA'I

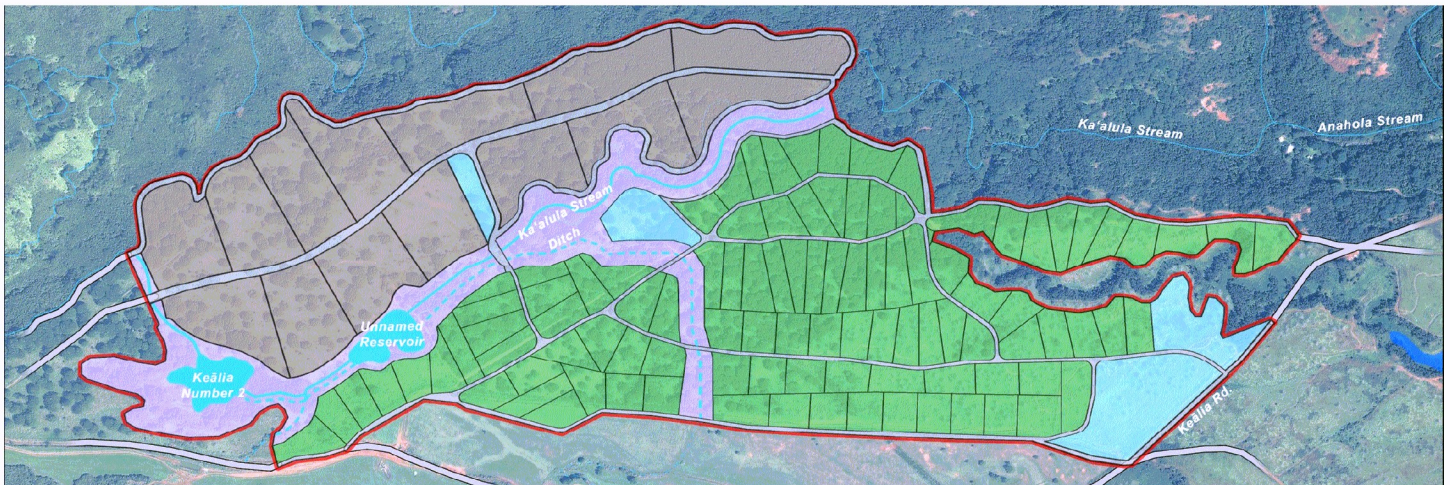
The Department of Hawaiian Home Lands (DHHL) is proposing the Anahola Kuleana Homestead Settlement Plan to offer 110 homestead lots (14 Pastoral and 101 Subsistence Agriculture) on 462 acres on the Island of Kaua'i (figure 3). According to HAR Chapter 10-3-30 Kuleana Homestead Leases, DHHL agrees to survey, stake and award lots and provide an unpaved roadway suitable to access the lots. As a non-traditional program, the Kuleana Homestead Program places responsibility for development of infrastructure in the hands of native Hawaiian beneficiaries. This arrangement provides beneficiaries land within a shorter time frame than the traditional DHHL awarding process, as well as the opportunity to create a new self-sufficient community. The Project is proposing the following DHHL land uses: Subsistence Agriculture, Pastoral, Community Use and Special District. These uses are intended to integrate the Settlement Plan area with the Anahola Town Center to create an intact contemporary ahupua'a.

### PROJECTS FACTS

**Client:** Department of Hawaiian Home Lands

### SERVICES PROVIDED

Planning & Environment  
Community Facilitation  
Mixed-Use Planning





# Hāna Health

## HĀNA, MAUI

Hāna Health intends to develop approximately 32 acres of agricultural land that lies adjacent to parcel that is leased to Hāna Health by the State Department of Health for its current operations. The expansion will further enhance Hāna Health's kuleana to improve the quality of life for all Hāna residents through a cohesive and comprehensive commitment to the social, economic, and health needs of this community. The Project is intended to expand farming, housing, and infrastructure as part of a directed farming program inclusive of traditional Hawaiian and other suitable crops that will align with the Owner's commitments to servicing the community as a center of healing and holistic wellness. G70 work includes design, planning and engineering services for an Existing Conditions Assessment and Feasibility Study/Master Plan.

### PROJECT FACTS

**Client:** Hāna Health

**Size:** 32 acres

**Construction:** \$104,785

**Completion:** On-going

### SERVICES PROVIDED

Planning & Environment

Civil Engineering



# Ho'okupu Center

## KAKA'AKO, O'AHU

Located along O'ahu's Ala Moana Beach Park, next to Kewalo Basin, the Ho'okupu Center is a setting to foster the programs of Kupu. We sought to create a modern "Hawaiian" place, not a building. The facility design focuses on the great location and providing flexible space for education and functions. This blurred the separation of interior and exterior spaces with low-cost semi-transparent exterior garage roll-up doors and interior sliding glass panels. The water shed is essentially one great room with net inspired art installations over the trusses, and natural, cool toned finishes throughout. The finishes used throughout speak to the Hawaiian sense of place with the exposed wood panels, monkeypod countertops, and rich green accent walls. Integrating the net inspired installation reflected the prior cultural use of the site, and symbolically tied the program and spaces to the ocean. It also blurs the delineation of building over place, further emphasizing this modern "Hawaiian Sense of Place".

### PROJECT FACTS

**Client:** Kupu

**Size:** 8,820 sq. ft.

**Completion:** March 2019

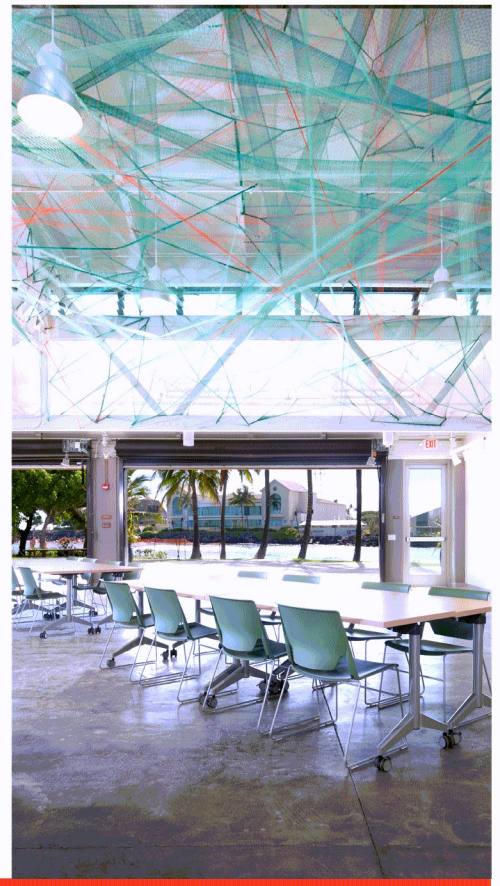
### SERVICES PROVIDED

Architecture

Interior Design

Civil Engineering

**Awards:** IIDA Ho'ohuli Awards - Serve Award, 2019



# Kalāhuipua'a Fishponds

WAIKOLOA, HAWAI'I

G70 initiated an ethno-historical study for the Kalāhuipua'a fishponds in Waikoloa. The Mauna Lani Resort Association is planning improvements to the fishponds, including possible restoration. The ethno-historical study was designed to identify any cultural resources or practices that may occur in the area and to gain an understanding of the community's perspectives on the ponds and the proposed restoration.

## PROJECTS FACTS

Client: Mauna Lani Resort Association



# Kamehameha Schools Kāpaeloa Cultural Learning Project

HONOLULU, O'AHU

The Kamehameha Schools Kāpaeloa Cultural Learning Project will include an outdoor activity lawn, an educational pavilion, dormitory structures (up to 3,000 sq. ft.), a caretaker's residence, an educational native plants garden, off-street parking, and support infrastructure. G7o completed the Master Plan (including cultural landscape and sensitivity analysis), Architectural Concepts, Environmental Assessment, Preliminary Engineering Report, SMA Use Permit, and Conditional Use Permit.

## PROJECT FACTS

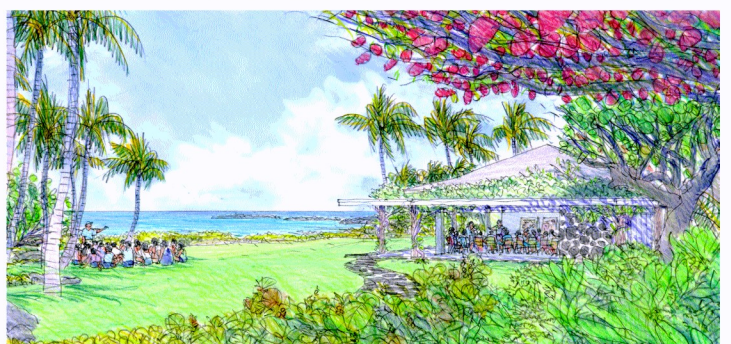
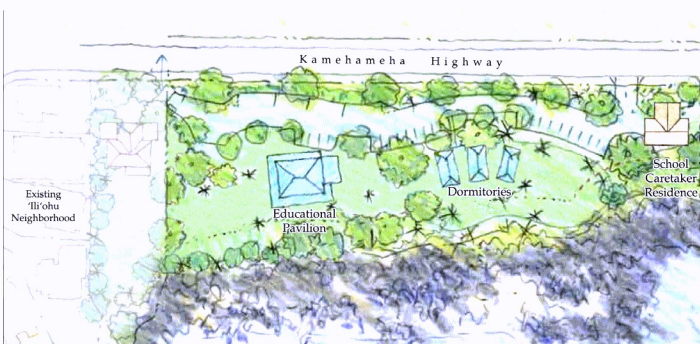
**Client:** Kamehameha Schools

## SERVICES PROVIDED

Architecture

Planning & Environment

Civil Engineering



# La'ī'Ōpua Community Center

## NORTH KONA, HAWAI'I

G7o worked with the Kaniohale Community Association and its 501(c)3 non-profit Board, La'ī'Ōpua 2020, and partners to provide a document that reflects their vision to bring social services and programs that contribute vocationally, economically, socially, and culturally to the growing communities of Kealakehe. The report includes a program, feasibility study and conceptual plan for the development of the proposed community center complex within the La'ī'Ōpua Villages of Kealakehe, North Kona, Island of Hawai'i.

### PROJECT FACTS

**Client:** La'ī'Ōpua 2020 & Kaniohale Community Association

**Size:** 20,000+ acres

**Completion:** Ongoing

### SERVICES PROVIDED

Architecture

Planning & Environment



# Pu'uhonua o Wai'anae Farm Village

## WAI'ANAЕ, O'AHU

The Pu'uhonua o Wai'anae (POW) Farm Village is a community-based grassroots initiative that is to provide a permanent home and a sustainable secure source of food for a segment of an underserved community. POW is a village of approximately 250 people living unhoused on the edge of the Wai'anae Boat Harbor. "Pu'uhonua" means place of refuge in Hawaiian language. The village is home to keiki (children) to kūpuna (seniors), a majority of which are Native Hawaiian and one of the most self-sufficient villages of communal living in the State. In summary, the proposed farm village primarily consists of group living facility units comprised of 200 total units organized in 11 clusters and agricultural cultivation. Accessory uses include a community gathering area called the Hale Halawai, donation center, health assessment center, community kitchen and storage, transitional tent area, caretaker's house, playground, agriculture warehouse, agriculture pavilion, agriculture storage, and an animal care area. The POW Village project is designed to co-locate a group living facility with a working agricultural farm. At its existing location at the Wai'anae Boat Harbor, POW villagers work together to grow their own crops. The objective of the following conceptual farm plan is threefold. First, POW intends to produce enough crops to feed its existing residents. The second intention is to farm enough crops to share with the wider Wai'anae community. Lastly, POW intends to sell any excess harvest to market. The outcome of POW's proposed plan will support POW's continued self-sustainability and helps contribute to a growing movement on the island to produce our own food. POW also conducted outreach with other local farmers and experts, including Kahumana Farms and Sustain Hawai'i, and local experts including the United States Department of Agriculture (USDA) Natural Resources Conservation Service (NRCS), the West O'ahu Soil and Water Conservation District, the O'ahu Resource Conservation & Development Council (O'ahu RCD), USDA Farm Service Agency, and the University of Hawai'i (UH) College of Tropical Agriculture and Human Resources (CTAHR).

### PROJECTS FACTS

**Client:** Pu'uhonua o Wai'anae

### SERVICES PROVIDED

Planning & Environment

Architecture

Civil Engineering





111 S King Street, Suite 170  
Honolulu, HI 96813  
808.523.5866  
[www.g70.design](http://www.g70.design)