



June 28, 2023

County of Hawaii
Housing and Community Development
Attn: Ms. Susan Kunz, Administrator
1990 Kino'ole Street, Suite 102
Hilo, Hawaii 96720

Subject: **Submittal for Professional Services – Fiscal Year 2023-2024**

Dear Ms. Kunz:

Mitsunaga & Associates, Inc. (MAI) is very interested in working with the County of Hawaii – Housing and Community Development and appreciate the opportunity to submit our Letter of Interest, Statement of Qualifications, References, DPW Form 120, and Verification of Professional Licenses.

The professional services and categories we wish to be considered for are as follows:

- **OH.1 – GENERAL ENGINEERING (CONSTRUCTION INSPECTOR)**
- **OH.2 – GENERAL ENGINEERING (PROJECT MANAGER)**
- **OH.3 – CONSTRUCTION MANAGEMENT / INSPECTOR**

Thank you very much for allowing us this opportunity. Should you need additional information, feel free to contact me at (808) 722-4977 or via email at loism@mitsdesign.com.

Best regards,

Lois L. Mitsunaga
Chief Executive Officer / President

LLM:lnl

statement of qualifications for:
COUNTY OF HAWAII
HOUSING & COMMUNITY DEVELOPMENT
FY 2024 PROFESSIONAL SERVICES



MITSUNAGA & ASSOCIATES, INC.
747 AMANA STREET, SUITE 216
HONOLULU, HAWAII 96814

JUNE 28, 2023



TABLE OF CONTENTS

OUR COMPANY	2
OUR SERVICES	6
RESUMES OF KEY PERSONNEL	9
PAST PERFORMANCE	
OUR EXPERIENCE	15
RELEVANT PROJECT EXPERIENCE	17
OUR PROCESS	21
REFERENCES	24
ATTACHMENTS	25
DPW FORM 120	
CERTIFICATE OF INSURANCE	
HAWAII STATE A&E LICENSES	



OUR COMPANY

Mitsunaga & Associates, Inc. (MAI) is a full service architectural/engineering firm that provides Planning, Project Management, Architectural Design, Civil Engineering, Structural Engineering and Construction Management services. Our firm has been based in Honolulu, Hawaii for over 42 years, occupying two floors of the Pacific Grand Building. This convenient location allows our staff to operate efficiently and hold job-related meetings with our subconsultants to maximize coordination on projects. Aside from our principal place of business, we also operate out of job site field offices to provide on-site construction management services for various projects. MAI has provided exceptional design, engineering and construction services to our government and private clientele for over 50 years.

MAI was started as a sole proprietorship in 1968 and was incorporated in 1981. Through the years, the firm has completed a wide variety of projects for the State, County, Federal, and private agencies throughout the State of Hawaii and abroad. Today, Mitsunaga & Associates, Inc. is a small-business and women-owned minority firm.

Mitsunaga & Associates, Inc. is organized into five divisions:

- Planning/Architectural/Interior Design;
- Civil Engineering;
- Structural Engineering;
- Construction Management; and
- Administrative Staff.

Our firm has sustained an average staff of 35 personnel over the past five years. The professionals on staff include:

- 3 Licensed Architects
- 6 Licensed Engineers
- 5 LEED Accredited Professionals
- 1 Design-Build Professional
- 2 Certified Construction Quality Managers; and
- 2 Certified Construction Managers

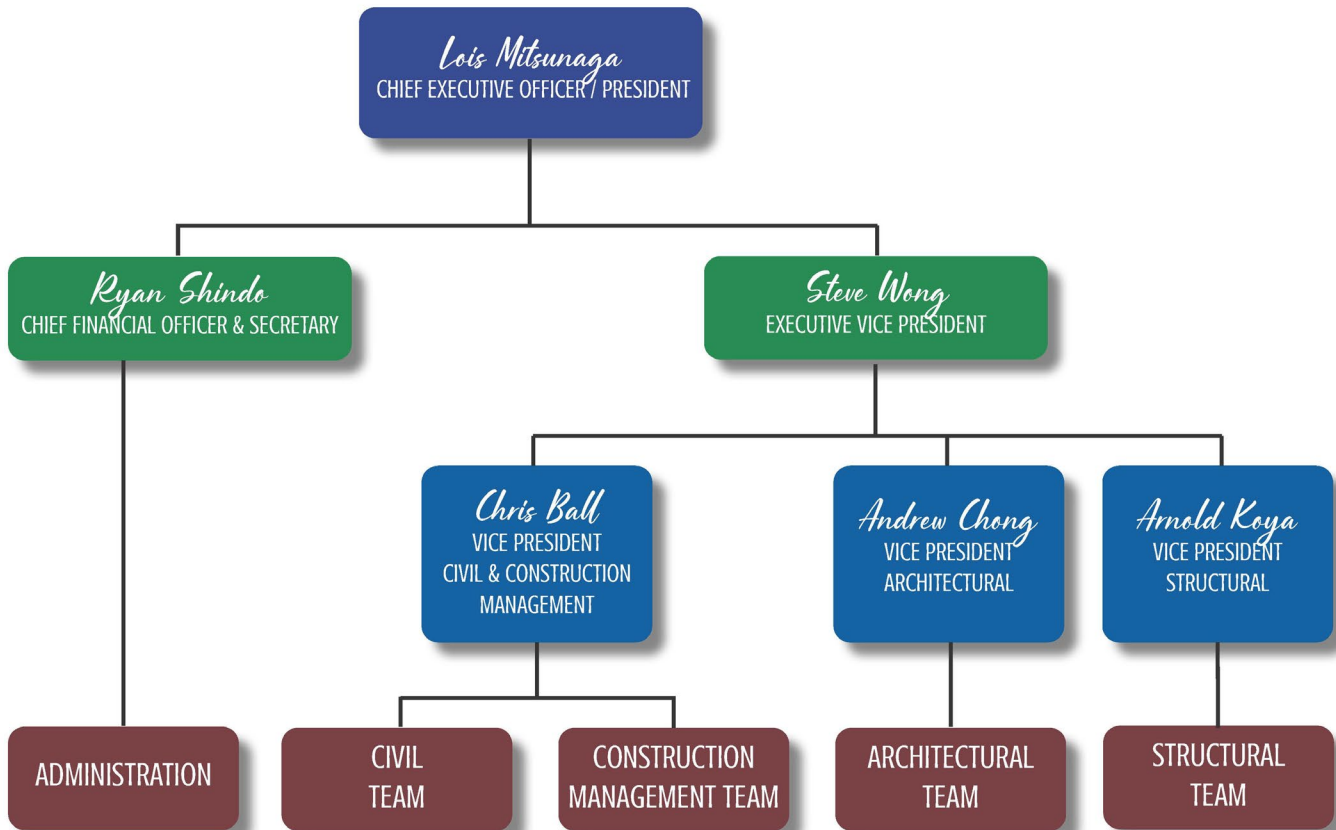
The combination of experience and knowledge in one location applied to all projects enables the MAI Team to deliver high-quality, award-winning designs in a timely manner and give the MAI Team the unique ability to respond to issues and resolve problems efficiently.

Mitsunaga & Associates, Inc. utilizes an integrated approach to problem solving. Members of the architectural, civil engineering, structural engineering, and construction management divisions collaborate at the project planning state and at strategic points of each project. The combination of knowledge and experience in one location enables our firm to deliver high-quality services to our clients. This approach and commitment to quality service remains the priority for MAI.

OUR PHILOSOPHY

Mitsunaga & Associates, Inc. (MAI) combines the specialized strengths of planning, architecture, and engineering within one local office. The MAI Team has combined innovation and creativity to provide exceptional architecture, engineering, and planning services in Hawaii and overseas. MAI has provided state-of-the-art planning and design services, working in partnership with our clients in expanding on the vision for smart growth, while developing a vibrant connection to the community that will be served. Our appreciation for the cultural context and unique demands of each project has shaped and inspired our work.

MITSUNAGA & ASSOCIATES ORGANIZATIONAL CHART



AWARDS & RECOGNITION

Mitsunaga & Associates, Inc. (MAI) has received many awards and recognition in our 42 years of being in business in Hawaii. MAI has numerous letters of recognition from various agencies, but some of our proudest achievements include the following:

DESIGN ORGANIZATIONS

NAIOP KUKULU HALE AWARDS:

- Solomon Elementary School, 2022 – New Public/Government Project Award
- Hale Mohalu II Senior & Family Affordable Housing, 2014 – Nonprofit Project
- University of Hawaii Cancer Center, 2013 – New Public/Government Project Award
- University of Hawaii Cancer Center, 2013 – Green Building Award
- Maryknoll Community Center, 2010 – New Project (Commercial/Other 40,000 SF or Less) Award
- Queen’s Medical Center Emergency Department Relocation, 2001 – Renovation of the Year

AIA HONOLULU DESIGN AWARDS:

- American Brewery Building, 2015 – Honorable Mention, Adaptive Reuse & Well Executed Community Space
- Kapolei Middle School, 2000 – Design Award of Merit
- Chinatown Manor, 1996 – Award of Merit, Multi-Family Residential
- National School Board AIA Award, 1990 – Kahuku Elementary School

ASID HAWAII CHAPTER DESIGN AWARDS:

- Catholic Charities Hawaii, 2010 – Award of Honor, Commercial Design (Office Space)
- Aloha Conference Center, Hickam AFB, 2003 – Award of Excellence, Large Commercial

AMERICAN PLANNING ASSOCIATION HAWAII CHAPTER AWARDS:

- Kapolei High School, 1999 – Community Based Planning Award
- Kapolei Middle School, 1997 – Community Based Planning Award

INDUSTRY AWARDS

IMPACT IN LEARNING:

- Chiefess Kamakahahei Middle School, 2001 – Impact in Learning Award

SCHOOL CONSTRUCTION NEWS & DESIGN SHARE:

- Chiefess Kamakahahei Middle School, 2002 – Award for Innovative Learning Environments

ENERGY STAR:

- Kapolei State Building (Kahukihewa Building), 2005 – Energy Star Award

MASONRY INSTITUTE OF HAWAII:

- Honolulu Consolidated Rental Car Facility, 2021 – Project of the Year



HAWAIIAN CEMENT CONCRETE ACHIEVEMENTS:

- Kauai Judiciary Complex, 2006 – New Public Building Award
- University of Hawaii-Hilo, Campus Classroom & Office Building, 2004 – Concrete Achievement Award
- Ko’olaupoko District Courthouse, 2004 – Concrete Achievement Award
- Kapolei State Office Building, 2000 – Concrete Achievement Award
- Kapolei Middle School, 2000 – Concrete Achievement Award

CONCRETE MASONRY:

- Bishop Museum Science Adventure Center, 2006 – Award of Excellence

GOVERNMENT AWARDS

CITY PROJECT OF THE YEAR AWARDS:

- Chinatown Manor, Phase I of Kekaulike Renovations, 1995 – Honor Award/City-Sponsored Category

U.S. ARMY CORPS OF ENGINEERS:

- Mitsunaga & Associates, 2012-2013 – Certificate of Appreciation, Far East District
- Shop 6 Relocation, East Range, 2008 – Award of Excellence, Honolulu District
- FY03 MCA Whole Barracks Renewal, Brigade Complex, Phase 3A, Quad C, Schofield Barracks, 2004 – Award of Excellence, Honolulu District
- FY03 MILCON Joint Mobility Complex (JMC) Programming Charrette, 2002 – Award of Excellence, Honolulu District
- HQ PACAF Building 1102, 2001 – Award of Excellence

U.S. AIR FORCE:

- Aloha Center, Hickam AFB, 2004 – Merit Award
- Joint Mobility Complex, Hickam AFB, 2002 – Award for Design Excellence

OUR SERVICES

At **Mitsunaga & Associates, Inc. (MAI)**, we are in a unique position to be able to provide a variety of services all under one roof. Our staff can provide professional services for the following categories:

- **OH.1 – GENERAL ENGINEERING (CONSTRUCTION INSPECTOR)**
- **OH.2 – GENERAL ENGINEERING (PROJECT MANAGER)**
- **OH.3 – CONSTRUCTION MANAGEMENT / INSPECTOR**

At MAI, an integrated approach to problem-solving is utilized. Members of the architectural, civil, structural, electrical engineering, and construction management divisions all participate at the project planning stage and at strategic points during the progress of the work. The combination of knowledge and experience in one location applied to specific projects enables the firm to deliver high quality services to our clients.

MAI's team can address the project elements by identifying specific needs, mobilize the appropriate staff, and manage implementation. Our services and expertise are tailored to each specific project, where comprehensive project controls are integrated into the process to help manage critical issues of time, cost, scope, quality, and safety. MAI will enhance and compliment the strengths of the agencies we work with by providing a comprehensive set of resources and skills that is critical to successful project delivery. The depth of resources and experience of our staff can provide guidance, has a proven track record, and possesses the technical competence to ensure a successful project.

In addition, qualities that MAI offers that are unique to our firm include:

- Being a multi-discipline firm with in-house architects, civil and structural engineers, and construction managers.
- Having multiple in-house disciplines that allow for rapid response capabilities.
- Using our depth of staff and resources allows for independent third-party quality control review of documents and technical support.
- Actual construction experience of key personnel.
- Support services of general contractor, Mitsunaga Construction, Inc. (MCI) provides valuable constructability reviews, accurate cost estimates and reviews, as well as assistance in negotiating change orders.



PLANNING, ARCHITECTURE & INTERIOR DESIGN

The architects on MAI's staff are experienced in Architectural, Planning, Interior Design & LEED projects, including both new and renovation projects. They are knowledgeable in the design of family housing, unaccompanied personnel housing, dining facilities, community support facilities, schools, clinics, administration office buildings, and maintenance/storage facilities. This Division has designed over 500 million dollars of new construction and renovation projects over the last five years.

The Planning Division takes a project from conception to implementation, providing a wide range of planning services. The staff considers the big picture, while also utilizing experience and expertise to understand specific project details to maximize opportunities and mitigate constraints. The Division has successfully executed land use analysis, feasibility studies, design programming analysis and reports, master plans and public participation programs for federal, state, county, and private clients. The staff has extensive experience in obtaining planning and environmental permits from federal, state, and county agencies and offers highly efficient and responsive support.

Our Architects work on projects large and small, working closely with the client to exceed expectations. Our creative professionals bring many years of experience, from varied backgrounds, to come up with the best solutions for each project. The Architectural Division offers a comprehensive range of services including planning, architecture, sustainable architecture, interior design & space planning, design documents, construction documents, Building Information Modeling (BIM), and cost estimating. They are also familiar with sustainable design using the Leadership in Energy and Environmental Design (LEED) and Low Impact Development (LID) requirements.

MAI and its Principal-in-Charge, Steven D. Wong, AIA, DBI, CQM, has extensive knowledge in Design-Build projects and has developed design-build RFQ, RFP, and criteria packages for many agencies. MAI has also been involved in over 15 design-build projects as a design team member under Contractor-led design-build projects.

Key Personnel in this Division are as follows:

Architectural/Planning Division:

Steven Wong, AIA, DBIA, CQM

Andrew Chong, AIA

Christine Cheuk, Architect, LEED AP BD+C

Interior Design:

Joanna (Lau) Kameoka, LEED AP

Leadership in Energy & Environmental Design (LEED) Accredited Professionals:

Christopher Ball, PE, LEED AP, CCM

Christine Tam Cheuk, Architect, LEED AP BD+C

Joanna (Lau) Kameoka, LEED AP



CIVIL ENGINEERING

Our Civil Engineering Division has successfully performed site planning, design, and construction administration on numerous projects for federal, state, county, and private clients. Our engineers are also well versed in low impact development (LID), which includes sustainable site development and LEED/HI-CHP certification. The Division is experienced in all aspects of site development, which support various types of facilities. The staff has also obtained governmental permits such as grading, building, and NPDES for projects.

Key Personnel in this Division are as follows:

Civil Division:

Chris Ball, PE, LEED AP, CCM

Kyle Nishioka, PE

Kenneth Santana, PE

Scott Suzuki, PE

Kimberly Sekiguchi, PE

CONSTRUCTION MANAGEMENT

The Construction Management Division provides total field service to the client including construction contract administration, inspection, assisting in negotiations with contractors on cost and schedule change requests, reviewing, analyzing and making recommendations on contractor's claims and construction certifications for payment. The objective of our Construction Management Division is to deliver projects on-time, on-budget, and in conformance with the contract documents.

Key Personnel in this Division are as follows:

Construction Management Division:

Chris Ball, PE, LEED AP, CCM

Kenneth Santana, PE – Construction Manager

Edward Masuoka, PE

Crisinaldo Bracerros, CCM – Engineer

Linda Fried – Inspector

Henry Butler - Inspector

Reid Honda – Inspector

Ed Kido – Inspector

Norman Takeya – Inspector



RESUMES

CHRISTOPHER BALL
KEN SANTANA
CRISINALDO BRACEROS
ED KIDO
HENRY BUTLER

CHRISTOPHER BALL PE, LEED AP, CCM

VICE PRESIDENT OF CM & CIVIL DIVISION

Mr. Ball is the Vice President and Construction Management & Civil Division Manager at Mitsunaga & Associates, Inc. He is responsible for the overall design and management of MAI's Civil Engineering & CM Division. He has over 24 years of civil engineering experience and has been with the company for over 20 years. He is well versed in master planning, site layout & design, as well as infrastructure requirements. He has experience in water supply, sewer, drainage, parking lots, grading & erosion control, hydrology and hydraulics. Projects he has worked on include master planning for the reuse of a military base, site development of various schools, housing projects, and private development residential and commercial facilities. He is also experienced in ADA retrofitted facilities complying with current federal and state ADA standards.

EDUCATION

University of California – Irvine, BA,
Environmental Analysis & Design,
1996

PROFESSIONAL REGISTRATIONS

Registered Civil Engineer:

- State of Hawaii, 2006,
PE-12144

AFFILIATIONS

American Society of Civil Engineers
(ASCE)

LEED Accredited Professional

Certified Construction Manager
(CCM), #4382

RELEVANT PROJECT EXPERIENCE

Kahului Airport (OGG) Upgrade of EDS for TSA

Kahului, Maui, Hawaii

Former Landfill Restoration – Lihue Airport

Lihue, Kauai, Hawaii

Mokapu Elementary School

Kaneohe, Oahu, Hawaii

Solomon Elementary School

Wahiawa, Oahu, Hawaii

Kamehameha Schools – Middle School Strategic Redevelopment

Honolulu, Oahu, Hawaii

Ka Pua – Makaha Kamehameha Schools Learning Community & DHHL Makaha Homestead

Nanakuli, Oahu, Hawaii

Maryknoll Community Center

Honolulu, Oahu, Hawaii

University of Hawaii – Clarence T.C. Ching Athletic Complex

Honolulu, Oahu, Hawaii

FY13 Automated Platoon Battle Course, Pohakuloa

Island of Hawaii



EDUCATION

Loyola Marymount University, BS,
Civil Engineering, 1990

PROFESSIONAL REGISTRATIONS

Registered Civil Engineer:

- State of Hawaii, PE-10071-C

AFFILIATIONS

American Society of Civil Engineers
(ASCE)

KENNETH SANTANA PE

CONSTRUCTION MANAGER

Mr. Santana has over 33 years of professional experience in facilities planning, engineering design, construction management, operation & maintenance of facilities, contracts administration, and construction estimating. Projects he has been involved with include transportation facilities, resorts, golf courses, residential developments, and commercial & recreational developments for various private and governmental agencies.

RELEVANT PROJECT EXPERIENCE

Former Landfill Site Restoration – Lihue Airport

Lihue, Kauai, Hawaii

Taxiway Safety Area Improvements – Molokai Airport

Molokai, Hawaii

Runway Safety Area Improvements – Lanai Airport

Lanai, Hawaii

HNL Terminal Improvements, Shuttle Gates 6-62

Honolulu, Oahu, Hawaii

Farrington Hwy Improvements, Waipahu Depot Rd to Aniani St

Waipahu, Oahu, Hawaii

Kuhio Hwy Improvements, Hanamaula to Kapaa (Kapaa Relief Route)

Kapaa, Kauai, Hawaii

Kamehameha Highway, Replacement of Kokololio Stream Bridge

Hauula, Oahu, Hawaii

Interstate Route H-1 Rehabilitation, Makakilo Interchange Improvements

Makakilo, Oahu, Hawaii

Pier 2 Cruise Ship Terminal, Honolulu Harbor

Honolulu, Oahu, Hawaii

Kapakaulua 1.0MG Reservoir

Haiku, Maui, Hawaii

H-1 PM Contraflow Lane, Phase 1

Honolulu, Oahu, Hawaii

Aloha Cargo Facility

Honolulu, Oahu, Hawaii

Ewa Makai Middle School

Ewa, Oahu, Hawaii



EDUCATION

National University of Manila, BS,
Civil Engineering, 1970

AFFILIATIONS

Certified Construction Manager
(CCM), #5318

CRISINALDO BRACEROS CCM

CONSTRUCTION MANAGER

Mr. Braceros has over 33 years of experience as a Project Engineer and Construction Inspector. He is very familiar with change orders, daily, weekly & monthly reports, field drawings, project records, and progress payments to ensure compliance with the construction plans and specifications. He is also a certified construction manager.

RELEVANT PROJECT EXPERIENCE

HNL DH Concourse Reroofing at DKI International Airport
Honolulu, Oahu, Hawaii

HNL Ewa Concourse Reroofing at DKI International Airport
Honolulu, Oahu, Hawaii

Hangar 110 Renovation, Phase 5 at Kalaeloa Airport
Kalaeloa, Oahu, Hawaii

Extension of Kapolei Parkway, Phase 8B, FAP No. STP-89201(1)
Ewa, Oahu, Hawaii

Rehabilitation of Localized Streets, Phase 4
Central Oahu, Hawaii

Pearl City Corporation Yard NPDES Improvements
Pearl City, Oahu, Hawaii

Rehabilitation of Localized Streets, Phase 7B
Makakilo, Waipahu & Waikele, Oahu, Hawaii

Rehabilitation of Localized Streets, Phase 9
Mililani, Oahu, Hawaii

Rehabilitation of Localized Streets, Phase 19D, 19E & 19F
Village Park, Waipio, Waikele, Waipahu, Oahu, Hawaii

Likelike Highway Improvements
Honolulu, Oahu, Hawaii

**Moanalua Freeway Resurfacing, Halawa Interchange to
Kahauiki Interchange**
Honolulu, Oahu, Hawaii

Interstate Route H-1 Rehabilitation, Oli Land to Kalihi Street
Honolulu, Oahu, Hawaii



EDUCATION

Honolulu Community College, AS,
Architectural Drafting Technology,
1980

AFFILIATIONS

HDOT Qualified in Field Sampling &
Testing, Soils & Aggregate

ACI Concrete Field Testing Technician,
Grade I

ED KIDO

CONSTRUCTION INSPECTOR

Mr. Kido has been in the design & construction industry for over 40 years. He has experience in construction inspection on all types of projects with significant work in architectural and structural projects, including transportation facilities. Some of his specific responsibilities related to design and construction has been the coordination of design production, repair & damage surveys of existing structures, daily inspection reports, field reports, and final inspection documentation for project close-out. He is a certified field sampling/testing technician.

RELEVANT PROJECT EXPERIENCE

Moanalua High School – Performing Arts Building
Honolulu, Oahu, Hawaii

Kailua High School – Electrical Upgrade
Kailua, Oahu, Hawaii

Waimanalo EL & IS – Science, Technology & Media Building
Waimanalo, Oahu, Hawaii

Honolulu CONRAC Facility, Phase 2A
Honolulu, Oahu, Hawaii

Kaaawa Elementary School – Campus Fire Alarm Upgrade
Kaaawa, Oahu, Hawaii

Whole Schools Renovation Windward
Kaneohe, Oahu, Hawaii

Renovation of Vacant Units, Statewide, Group A
Various Locations, Hawaii

Repair & Renovation of McCully Recreation Center
Honolulu, Oahu, Hawaii

University of Hawaii Campus Center Renovation, Phase IIB
Honolulu, Oahu, Hawaii



HENRY W. BUTLER

CONSTRUCTION INSPECTOR

EDUCATION

Mililani High School, 1978

DeVry Institute of Technology,
Electrical/Electronics

DeVry Institute of Technology,
Computer Science Technology

AFFILIATIONS

HDOT Qualified in Field Sampling &
Testing, Soils & Aggregate

HDOT Qualified in Laboratory
Testing, Bituminous (Asphalt)

ACI Concrete Field Testing Technician,
Grade I

Mr. Butler has over 27 years of experience in the construction industry. He has worked as a construction inspector on various phases of construction covering a range of project types. His responsibilities include inspection of all phases of construction for new and repair/maintenance work to ensure compliance with the contract documents. He is familiar with the contractor's weekly and monthly activity reports, project scheduling, field inspections, and cost estimating. He is also certified in field sampling/testing by the Hawaii Department of Transportation as well as from the American Concrete Institute.

RELEVANT PROJECT EXPERIENCE

DOE – Area 02 Construction Management Services
Various Locations, Oahu, Hawaii

DOE – Area 04 Construction Management Services
Various Locations, Oahu, Hawaii

DOE – Area 07 Construction Management Services
Various Locations, Oahu, Hawaii

DOE – Construction Management Services for Area 2 GEMS
Various Locations, Oahu, Hawaii

Mililani Middle School – New Classroom Building
Mililani, Oahu, Hawaii

Barbers Point, Cloud Break – Office Building Conversion to Veterans Affairs Supportive Housing (VASH)/Hawaii Public Housing Authority (HPHA)/Section 8 Approval Units
Barbers Point, Oahu, Hawaii

Kuhio Park Terrace (KPT) – 150 Unit Conversion from Project Base Unit to Housing & Urban Development (HUD)/HPHA/Section 8 Units
Honolulu, Oahu, Hawaii

OUR EXPERIENCE

Mitsunaga & Associates, Inc. (MAI) has an extensive background in the planning and design of a wide variety of projects throughout the state. Our highly qualified, responsive, and service-oriented team is equipped to handle the challenges of the unique projects we encounter.

MAI has provided an innovative, creative, and highly collaborative approach to the planning and design of the project. The process commences with our listening to our clients and gathering information to implement design methods that incorporate state-of-the-art practices. Innovation starts with a design philosophy that appreciates the unique needs and desires of the various agencies we serve, along with the community, with the intent of creating highly individual solutions to planning and design issues.

MAI brings an innovative approach to design, which includes:

- A sense of experimentation and of investigation into the way people interact with their built environment, as central to the design team’s work as planners, architects, and engineers.
- The discovery of highly individual solutions, which are unique.
- New techniques and modeling methodologies that are highly interactive, to encourage and enable staff to participate in the master planning, programming, and design phases.
- Enhancing the spirit with the integration of art and cultural themes into design of the buildings and landscape. These themes will give form, unity, and visual connection to the physical design of the “campus.”
- Emphasis on the emotional content of design and a design philosophy that focuses on the user in the design process.
- A background in research which challenges accepted resolutions of design questions and strives for inventive solutions to design challenges. It is not enough to adopt previously accepted or standard resolutions to design issues.
- Implementation of lessons learned from past experiences and projects.
- A design approach for flexibility, which addresses three principles:
 - Reducing the need for changes in facilities with “universal” rooms that accommodate a variety of uses, adjacencies, and modular planning layouts to allow “flexing” of one program area into others and designing for standardization of elements to be share by multiple uses overtime.
 - Reducing the cost of remodeling, through choices of adaptable building systems, placement of fixed elements outside the program areas and stacking of building system spaces.
 - Reducing the impact of remodeling on other program areas and on service circulation spines, by locating elevators, primary public and service corridors and building system elements that require access for maintenance and repairs on the outside of program areas.
 - Sustainable design concepts for a sustainable environment that lifts the spirit of the occupants, while providing improved efficiency of the building systems.

UNIQUE QUALITIES

At MAI, an integrated approach to problem-solving is utilized. Members of the architectural, civil, structural, electrical engineering, and construction management divisions all participate at the project planning stage and at strategic points during the progress of the work. The combination of knowledge and experience in one location applied to specific projects enables the firm to deliver high quality services to our clients.

MAI's team will be able to address the project elements by identifying specific needs, mobilizing the appropriate staff, and managing implementation. Our services and expertise are tailored to each specific project, where comprehensive project controls are integrated into the process to help manage critical issues of time, cost, scope, quality, and safety. MAI enhances and compliments the strengths of our clients by providing a comprehensive set of resources and skills that is critical to successful project delivery. The depth of resources and experience of our staff can provide guidance and recommendations regarding:

- The effective use of available funds
- Optimal project scheduling options
- Value added use of individual team member's expertise
- Strategies to avoid delays, changes, and claims
- Constructability and sustainability reviews
- Code compliance reviews
- Value engineering

In addition, qualities that MAI offers that are unique to our firm include:

- Being a multi-discipline firm with in-house architects, civil and structural engineers, and construction managers.
- Having multiple in-house disciplines that allow for rapid response capabilities.
- Using our depth of staff and resources allows for independent third-party quality control review of documents and technical support.
- Actual construction experience of key personnel.
- Support services of general contractor, Mitsunaga Construction, Inc. (MCI) provides valuable constructability reviews and accurate cost estimates.



DHHL HOME INSPECTIONS & CONSTRUCTION MONITORING

VARIOUS LOCATIONS, STATEWIDE, HAWAII

COMPLETED 2023 EST. (ONGOING)

CLIENT: DEPARTMENT OF HAWAIIAN HOMELANDS

MS. MALIA COX

P: (808) 620-9485

This project involved providing professional services to DHHL's Native American Housing Assistance & Self Determination Act of 1996 (NAHASDA) Office with Home Inspection & Construction Monitoring Services, where the DHHL program assists income eligible native Hawaiian families with home repair. Homes were evaluated to determine if they can be repaired, or if complete demolition and replacement was required. The general scope of services was conducted in two phases, where were as follows:

PHASE I – INSPECTION & REPORT

1. Scoping and coordination with DHHL and project team.
2. Conducted necessary inspections for various NAHASDA-funded projects on all islands.
3. Inspections included units contemplated for rental assistance and transitional housing.
4. Priority for repair work was associated with health and safety, as well as HUD standard criteria and Fair Housing Act.
5. Conducted hazardous materials assessment and report.
6. Cost threshold for repair work per unit was \$100,000. Costs exceeding the threshold were considered for demolition and reconstruction.
7. Prepared inspection reports and cost estimates.

PHASE I – CONSTRUCTION MONITORING

1. Services included pre-repair inspections to determine work required for health and safety (repair only) to confirm any changes from initial inspection/report.
2. Provided inspections and reports at each draw point to ensure work was completed before issuance of payment (i.e., foundation, framing, electrical, plumbing).
3. Provided pre-final inspection and punchlist.
4. Conducted final inspection.
5. Conducted warranty inspections approximately one year after construction completion.

Mitsunaga & Associates, Inc. (MAI) provided construction monitoring services, which included inspection and quality assurance. MAI was responsible for maintaining inspection reports for construction progress payments and providing final inspection and reports to maintain quality assurance. Successful project elements included coordinating with the contractor on scheduled work activities and completion dates for inspection services. Inspections were limited due to budget constraints to complete the work. In order to maximize construction monitoring services to DHHL properties statewide, initial inspections were conducted to determine a rough cost estimate for the repair work, as the threshold per unit was \$100,000 under the NAHASDA program.



CONSTRUCTION MONITORING OF HHFDC PORTFOLIO CAPITAL IMPROVEMENTS

VARIOUS LOCATIONS, STATEWIDE, HAWAII

COMPLETED 2023 EST. (ONGOING)

**CLIENT: DEPARTMENT OF BUSINESS, ECONOMIC, DEVELOPMENT & TOURISM
HAWAII HOUSING FINANCE & DEVELOPMENT CORPORATION**

The Hawaii Housing Finance and Development Corporation (HHFDC) awarded the Affordable Rental Housing Portfolio Restructuring and Preservation to Komohale LP in 2019, where a renovation budget of approximately \$85.1 million was established.

The leasehold sale achieved the dual goals of rehabilitating the properties for long-term preservation and fulfilling the State's objective to minimize displacement of existing tenants. The terms of the leasehold sale ensured the properties' long-term affordability while enabling substantial renovations to be completed faster than possible under the State's ownership. Divesting itself of the rental housing portfolio also freed up HHFDC resources to focus on its primary goal of increasing the supply of new affordable housing.

The portfolio consisted of the following six affordable rental housing and mixed-use properties with 1,221 residential units and approximately 86,000 SF of commercial space.

- Pohulani Elderly (Kakaako, Oahu) – 263 elderly units
- Kauhale Kakaako (Kakaako, Oahu) – 268 family units
- Kamakee Vista (Kakaako, Oahu) – 226 family units
- Kekuilani Courts (Kapolei, Oahu) – 80 family units
- Honokowai Kauhale (Lahaina, Maui) – 184 family units
- Lailani Apartments (Kailua-Kona, Hawaii) – 200 family units.

Mitsunaga & Associates, Inc. (MAI) provided construction monitoring services, which included inspection and quality assurance. MAI also maintained inspection & monthly reports and tracked schedule changes. Successful project elements included coordinating with the contractor on scheduled work activities and completion dates for inspection services. Inspections were limited due to budget constraints to complete the inspections and reports for the renovation and improvements of the six housing complexes. Lessons learned include the importance of communication and coordination of work activities to efficiently utilize time on site for inspections and quality assurance reports.



HPHA AMP 38 SITE & INFRASTRUCTURE IMPROVEMENTS

VARIOUS LOCATIONS, KAUAI, HAWAII

COMPLETED 2019

CLIENT: STATE OF HAWAII, HAWAII PUBLIC HOUSING AUTHORITY
MR. SAHAR IBRAHIM, PROJECT MANAGER
(808) 832-6030

The Hawaii Public Housing Authority (HPHA) is the only statewide Public Housing Agency for the State of Hawaii. HPHA Asset Management Projects (AMP) 38 includes all Federal and State public housing properties on the Island of Kauai. The infrastructure and site improvements addressed under this project included:

- Hale Hoolulu in Kilauea
- Hale Hoonanea in Eleele
- Hale Nana Kai O Kea in Kapaa
- Home Nani in Waimea
- Hui O Hanamaulu in Lihue
- Kalaheo Homes in Kalaheo
- Kawailehua Federal in Koloa
- Kawailehua State in Koloa
- Kekaha Haaheo in Kekaha

The HPHA AMP 38 infrastructure and site improvements project included various site and utility improvements on each site.

Mitsunaga & Associates, Inc. (MAI) provided civil engineering design services on this project. Successful project elements included working with the client in developing priority infrastructure improvements, which included sewer line replacement within the housing complexes. Project challenges included identifying the priority infrastructure improvements that would meet the project budget that included nine separate HPHA housing sites.



PUNCHBOWL HOMES

HONOLULU, OAHU, HAWAII

COMPLETED 2022

CLIENT: STATE OF HAWAII, HAWAII PUBLIC HOUSING AUTHORITY
MR. MARIO TAKEO, PROJECT MANAGER
(808) 629-9763

Mitsunaga & Associates, Inc. (MAI) provided complete design services to address building and site improvements for Punchbowl Homes. The project involved the renovation of an existing affordable housing complex to provide accessible units located in three connected buildings. The entire site consisted of a 7-story, high-rise building, a 3-story family building, and other accessory buildings. The scope involved various structural repairs, accessibility remediation, reroofing, and site work. MAI conducted extensive on-site surveys to adequately identify all problems that might be encountered during construction.

A challenge on this project was that the work needed to be accomplished while residents were still living in the complex. Work had to be phased and a work around plan had to be developed. Temporary accommodations were considered for residents during construction. Hazardous materials being present in the existing buildings and keeping to a tight budget presented other challenges. Fortunately, the project was completed on time and within budget despite many unforeseen conditions being discovered during construction.

WAIPAHU I & II STRUCTURAL ASSESSMENT

WAIPAHU, OAHU, HAWAII

COMPLETED 2018

CLIENT: STATE OF HAWAII, HAWAII PUBLIC HOUSING AUTHORITY
MS. LISA IZUMI, PROJECT MANAGER
(808) 832-5374

Mitsunaga & Associates, Inc. (MAI) was tasked by the Hawaii Public Housing Authority (HPHA) to perform structural assessments for the Waipahu I & II apartment complexes. MAI was to perform on-site field observations, review as-built drawings, and submit preliminary structural assessments to explain possible causes of the observed problems and provide a direction for practical solutions.

The Waipahu I apartment complex consisted of 19 total apartment units in 2 four-story CMU/concrete buildings that are connected by cantilevered covered walkways. Waipahu II had a total of 20 apartment units in 3 three-story CMU/concrete buildings connected by exterior concrete walkways and open stairwells. These buildings were completed in 1969.

The need for the structural assessments arose from reports of random CMU wall cracks and concrete spalling at rusted metal pipe guard rail posts. There were also reports of water intrusion to existing CMU walls and at connections between CMU parapet walls and concrete roofs. All these issues raised safety concerns for HPHA.

MAI conducted their assessment, without the availability of as-built structural drawings, and were able to determine possible causes to the problems and provide possible corrective action. Subsequently, spall repairs were done in 2022 based on the initial assessments.



OUR PROCESS

Mitsunaga & Associates, Inc. (MAI) believes that the combination of experience and knowledge in one location applied to each project enables our team to deliver high quality, award-winning designs in a timely manner and also gives us the unique ability to respond to questions and/or resolve problems and issues in a quick and timely fashion. MAI also provides a unique method for quality control for all projects by having a construction division in house that allows MAI to coordinate constructability reviews, value engineering options, and cost control methods in the early stages of design and throughout the entire design process. As part of the final QA/QC process, MAI utilizes a separate quality review team for each design discipline, including cost estimates that enable MAI to provide all of their clients with the best product possible.

Throughout the project team's development, planning/design reviews, and collaboration, the team contributes key ideas to the project and are a significant part in solidifying the core philosophy of innovation and individuality. Our work reflects great variety because the designers/engineers see each project as unique and calling for special solutions.

Mitsunaga & Associates, Inc. (MAI) is committed to providing quality professional services that include:

- Providing an aesthetically pleasing and functional design that will meet the requirements of the users while protecting the surrounding environment and conforming to government regulations, including regulations on health, safety, and welfare to the public.
- Providing a design within budget.
- Providing a design within schedule requirements for the project. This relates not only to the design process but also to the construction period specified for the project.

MANAGEMENT PHILOSOPHY

Mitsunaga & Associates, Inc. (MAI) implements Total Quality Management (TQM) programs throughout company operations. The firm offers continuous quality improvement as an on-going process to ensure that suggestions from staff are evaluated and incorporated toward improving procedures and elevating performance standards. MAI encourages initiative and innovation by its staff, which results in better products and services for its clients.

MAI believes that the foundation of a quality system is a well-trained staff. Our firm encourages all key staff to keep abreast of emerging development in their technical field by attending classes and seminars. For those staff designated as project leaders, project management training is required. All principals have had TQM training and subscribe to the principles of TQM.

MANAGEMENT STRUCTURE

To meet our goals, we utilize a project delivery system that has enabled the firm to provide high-quality services in a timely manner to its clients. The key ingredient to this system is the project manager and the project management plan.

The project manager will lead the entire design and review team. The project manager is responsible for setting quality standards and coordinating the preparation of the project management plan and master schedule. This person will continuously monitor the project and take appropriate action to make sure the quality, the schedule, and cost targets are met.

The project manager is the point of contact, has complete control of assigning resources to meet the goals of the project, supervises both the lead designer and lead reviewer, and resolves any differences that may arise between the two groups. For subconsultants work, the project manager will deal with the principals of the firms that originally participated in preparation of the project management plan for the project and agreed to milestones in the master schedule.

PROJECT MANAGEMENT PLAN

The Project Management Plan represents MAI's commitment to the project goals and timely performance. The central feature of this plan is a responsive management information system that emphasizes job tracking, monitoring, and regular reports that are accurate and current. In this way, production is kept on schedule and production coordination will be effectively conducted within the office and among subconsultants.

The Project Management Plan encompasses:

- Schedule Control
- Cost Control
- Project Design Quality Control
- Project Team Communication and Coordination

SCHEDULE CONTROL

A master schedule is developed for each project, with milestones set for the coordination of subconsultants, MAI's work, and for submission of documents at each or the submission stages. The master schedule is set at the initial planning stage. Adherence to this master schedule enables sufficient time for project coordination and review, and assures a quality product at each stage that the documents must be submitted. The master schedule provides the framework for measuring project progress and for reassuring project resources to meet target dates.

COST CONTROL – CRITICAL COST ESTIMATING

Critical cost estimating is made at three stages of the project. At the schematic design stage, rough costs are used to ensure the feasibility of the project within the overall budget. Upon completion of the design development or pre-final stage, the estimated cost is based on unit costs and preliminary quantity takeoffs developed by all members of the project team, under the monitoring of the project manager. The final cost estimates at the completion of the construction documents are based on actual material takeoffs.

At each of these stages, a tolerable level of variance is established. At the schematic design stage, the cost estimates are targeted to the budget within 3%. At the design development stage, the tolerance is reduced to 1-1/2%. At the final stage, the design effort is directed to assure the estimate is within budget constraints.

Whenever costs appear to exceed the variance rate, the project team is to identify specifically how costs will be brought into line. The coordinator for this effort is the project manager. Construction cost estimates are made at every design stage of the project so that decisions affecting the cost can be made without backtracking on the project. This will enable the project team to commit to and keep to a very tight performance schedule, including acknowledgment of the construction schedule that fits within the framework of the total project deadlines.

All cost estimates are reviewed by someone who has actual construction experience and who is knowledgeable with the current bidding climate.



PROJECT DESIGN QUALITY CONTROL

The quality control procedures adopted by MAI involves employing a review team that is responsible for the following:

- **Peer Review:** A staff architect/engineer that is familiar with requirements and who is not assigned to the project will perform this independent third-party review. He or she will check and review the contract documents to ensure that designs are done well and work is coordinated.
- **Reliability and Maintainability Review:** MAI requires that its staff review the designs to be sure that the final product constructed will not add maintenance cost burdens to the client. Water infiltration and site drainage review is carried out as a special review that looks at the overall site grading of the project.
- **Constructability Review:** An independent third-party review is done by someone with actual construction experience to ensure that designs are constructible and cost effective. A constructability review is conducted at project initiation and at strategic points during the design of the project.

PROJECT TEAM COMMUNICATION AND COORDINATION

Weekly project review and evaluation meetings are held that are attended by all principals, project engineers and key staff. These weekly discussions are specifically aimed at problem solving and to share information on solutions to problems that have been encountered and satisfactorily resolved. Through this type of communication, essential design knowledge is shared amongst the key members of the organization. This focus on the concern for quality is reflected in the design and design documents prepared.

CAPACITY TO PERFORM THE WORK REQUIRED

Mitsunaga & Associates, Inc. (MAI) has the capability and capacity to perform the work required for this project in the required time. Our firm’s capability is evident in the successful completion of community planning, feasibility studies and design projects for our federal, state, county, and private clients. With our staff of architects and engineers, MAI is uniquely positioned to respond to multiple task orders within the required time frame and schedule.

MAI has an excellent record of meeting time schedules and cost targets on all our projects. A compilation of recent project bid openings shows the difference between the estimated cost of the project and the low bid price. Our record for “on-time” design is excellent. It has always been a top priority at MAI to meet time schedules set by our clients. The fact that we have many return clients is a testimony to our performance.



REFERENCES

The following are five (5) references who may be contacted regarding our work:

- Ms. Valerie Suzuki, PE – Project Manager
Department of Land & Natural Resources
1151 Punchbowl Street
Honolulu, Hawaii 96819
P: (808) 587-0275
E: Valerie.S.Suzuki@hawaii.gov
- Mr. Gary Furuta
GSF, Inc.
1828 Young Street
Honolulu, Hawaii 96826
P: (808) 429-7815
E: Gary@gsfhi.com
- Ms. Brenda Lowrey – State Educational Facilities Planner
State of Hawaii, Department of Education
333 Waialae Avenue, Room C209
Honolulu, Hawaii 96816
P: (808) 738-4509
E: Brenda.Lowrey@k12.hi.us
- Ms. Maritez Marquez – Project Manager
State of Hawaii, Department of Transportation – Airports Division
400 Rodgers Boulevard, Suite 700
Honolulu, Hawaii 96819
P: (808) 838-8808
- Mr. Steve Kelly
Kapolei Property Development LLC
1001 Kamokila Boulevard, Suite 200
Kapolei, Hawaii 96707
P: (808) 674-3229
E: SteveK@kapolei.com




ATTACHMENTS

**DPW FORM 120
CERTIFICATES OF INSURANCE
HAWAII STATE A&E LICENSES**

**COUNTY OF HAWAII
HOUSING AND COMMUNITY DEVELOPMENT**

QUESTIONNAIRE FOR ARCHITECTS, ENGINEERS AND OTHER PROFESSIONAL SERVICES

QUESTIONNAIRE FOR: (LIST DISCIPLINE) • Architectural • Structural Engineering • Civil Engineering • Electrical Engineering • Planning • Construction Management	OTHER QUESTIONNAIRES SUBMITTED: (LIST DISCIPLINES)	DATE June 26, 2023
---	--	-----------------------

FIRM NAME Mitsunaga & Associates, Inc. (MAI) 	ESTABLISHED YEAR STATE 1980 Hawaii	TYPE OF ORGANIZATION (Underline) INDIVIDUAL PARTNERSHIP <u>CORPORATION</u> JOINT VENTURE OTHER
--	--	---

BUSINESS ADDRESS, TELEPHONE & FAX NO. OF HAWAII OFFICE 747 Amana Street, Suite 216, Honolulu, Hawaii 96814 Phone: (808) 945-7882 Fax: (808) 946-2563 Email: general@mitsdesign.com	AGE OF FIRM 42 Years	FEDERAL ID NO. 99-0202528	YEARS ESTABLISHED IN HAWAII 42 Years
---	-------------------------	------------------------------	---

PRINCIPALS OF FIRM: (NAMES) Lois Mitsunaga, Chief Executive Officer / President Steven D. Wong, Executive Vice President	ASSOCIATE MEMBERS OF FIRM: (NAMES) Andrew Chong, AIA Edward Masuoka, PE Christine Cheuk, AIA Kimberly Sekiguchi, PE Chris Ball, PE Kyle Nishioka, PE Scott Suzuki, PE Kenneth Santana, PE
--	---

PRESENT BRANCH OFFICE(s): (ADDRESS, TELEPHONE & FAX NO.)	PERSON IN CHARGE: (NAMES) Steven D. Wong, AIA
--	--

NUMBER OF PERSONNEL IN YOUR PRESENT ORGANIZATION

LOCATED AT	PRINCIPALS & KEY PERSONNEL			OTHER PERSONNEL											TOTAL
	Architect	Engineer	Others	Architect	Engineers				Draftsmen	Spec. Writer	Estimator	Inspector	Surveyor	Balance	
					Mech.	Electric	Civil	Others							
HOME OFFICE	1	1	0	3	0	1	6	3	4	0	0	7	0	5	31
BRANCH IN															
TOTAL	1	1	0	3	0	1	6	3	4	0	0	7	0	5	31

TECHNICAL PERSONNEL: 16	NUMBER OF PERSONNEL WITH HAWAII LICENSES: 9	NUMBER OF PERSONNEL WITHOUT HAWAII LICENSES: 22
--------------------------------	--	--

PERSONAL HISTORY STATEMENT OF PRINCIPALS AND ASSOCIATES WITHIN YOUR FIRM								
NAME Lois Mitsunaga			RESIDENT Hawaii		NAME Steven D. Wong, AIA, DBIA, CQM			RESIDENT Hawaii
TITLE Chief Executive Officer / Structural Engineer				TITLE Executive Vice President				
YEARS OF EXPERIENCE 26	AS PRINCIPAL IN THIS FIRM 2	AS PRINCIPAL IN OTHER FIRMS	OTHER THAN PRINCIPAL	YEARS OF EXPERIENCE 56	AS PRINCIPAL IN THIS FIRM 38	AS PRINCIPAL IN OTHER FIRMS 1	OTHER THAN PRINCIPAL 17	
EDUCATION (COLLEGE, DEGREE, YEAR, SPECIALIZATION) University of Southern California, BS, 2005, Civil Engineering University of Hawaii at Manoa, MS, 2008, Structural Engineering				EDUCATION (COLLEGE, DEGREE, YEAR, SPECIALIZATION) University of Hawaii at Manoa, BARCH, 1972, Architecture				
MEMBERSHIP IN PROFESSIONAL ORGANIZATIONS Structural Engineers Association of Hawaii (SEAOH)				MEMBERSHIP IN PROFESSIONAL ORGANIZATIONS American Institute of Architects (AIA), Hawaii & National Chapter; Designated Design-Build Professional, Cert. ID #D-1977; Construction Quality Manager #KA-CQM-21-0174				
REGISTRATION (TYPE, YEAR, STATE):				REGISTRATION (TYPE, YEAR, STATE) Architect, 1979, Hawaii - AR-4646; Architect, 1987, Northern Mariana Islands				
NAME			RESIDENT OF Hawaii		NAME			RESIDENT OF Hawaii
TITLE				TITLE				
YEARS OF EXPERIENCE	AS PRINCIPAL IN THIS FIRM	AS PRINCIPAL IN OTHER FIRMS	OTHER THAN PRINCIPAL	YEARS OF EXPERIENCE	AS PRINCIPAL IN THIS FIRM	AS PRINCIPAL IN OTHER FIRMS	OTHER THAN PRINCIPAL	
EDUCATION (COLLEGE, DEGREE, YEAR, SPECIALIZATION)				EDUCATION (COLLEGE, DEGREE, YEAR, SPECIALIZATION)				
MEMBERSHIP IN PROFESSIONAL ORGANIZATIONS				MEMBERSHIP IN PROFESSIONAL ORGANIZATIONS				
REGISTRATION (TYPE, YEAR, STATE)				REGISTRATION (TYPE, YEAR, STATE)				

PERSONAL HISTORY STATEMENT OF PRINCIPALS AND ASSOCIATES WITHIN YOUR FIRM							
NAME Andrew Chong, AIA			RESIDENT OF Hawaii	NAME Christine Tam Cheuk, AIA			RESIDENT Hawaii
TITLE Vice President/Architectural Division Manager				TITLE Architect			
YEARS OF EXPERIENCE 32	AS ASSOCIATE IN THIS FIRM 10	AS ASSOCIATE IN OTHER FIRMS	OTHER THAN ASSOCIATE 22	YEARS OF EXPERIENCE 33	AS ASSOCIATE IN THIS FIRM 10	AS ASSOCIATE IN OTHER FIRMS	OTHER THAN ASSOCIATE 23
EDUCATION (COLLEGE, DEGREE, YEAR, SPECIALIZATION) University of Hawaii at Manoa, BARCH, 1998. Architecture Honolulu Community College, AS, 1991, Architectural, Drafting Technology				EDUCATION (COLLEGE, DEGREE, YEAR, SPECIALIZATION) University of New York, BS, Architecture, 1990			
MEMBERSHIP IN PROFESSIONAL ORGANIZATIONS American Institute of Architects (AIA)				MEMBERSHIP IN PROFESSIONAL ORGANIZATIONS American Institute of Architects (AIA); NCIDQ - #0214444; ASID, 2006; LEED AP Building Design +Construction; Construction Quality Manager #KA-CQM-21-0467			
REGISTRATION (TYPE, YEAR, STATE) Architect, 2013, Hawaii - AR-15481				REGISTRATION (TYPE, YEAR, STATE) Architect, 2013, Hawaii - AR-14062			
NAME			RESIDENT OF	NAME			RESIDENT OF
TITLE				TITLE			
YEARS OF EXPERIENCE	AS ASSOCIATE IN THIS FIRM	AS ASSOCIATE IN OTHER FIRMS	OTHER THAN ASSOCIATE	YEARS OF EXPERIENCE	AS ASSOCIATE IN THIS FIRM	AS ASSOCIATE IN OTHER FIRMS	OTHER THAN ASSOCIATE
EDUCATION (COLLEGE, DEGREE, YEAR, SPECIALIZATION)				EDUCATION (COLLEGE, DEGREE, YEAR, SPECIALIZATION)			
MEMBERSHIP IN PROFESSIONAL ORGANIZATIONS				MEMBERSHIP IN PROFESSIONAL ORGANIZATIONS			
REGISTRATION (TYPE, YEAR, STATE)				REGISTRATION (TYPE, YEAR, STATE)			

ARCHITECTURAL DIVISION

PERSONAL HISTORY STATEMENT OF TECHNICAL PERSONNEL WITHIN YOUR FIRM											
NAME Joanna Kameoka, LEED AP		STATUS (Underline) <u>Full-Time</u> Part-Time		NAME Lynnette Unten		STATUS (Underline) <u>Full-Time</u> Part-Time					
TITLE OR POSITION Architectural Designer/Interior Designer			YEARS OF EXPERIENCE 19			TITLE OR POSITION Architectural CADD Operator			YEARS OF EXPERIENCE 9		
WITH THIS FIRM 12	WITH LAST FIRM (NAME & NO. OF YEARS) Ushijima Architects - 4 yrs		WITH OTHER FIRMS 3			WITH THIS FIRM 6	WITH LAST FIRM (NAME & NO. OF YEARS) Shigemura Lau Sakanishi Higuchi & Associates - 3 years		WITH OTHER FIRMS 0		
EDUCATION (COLLEGE, DEGREE, YEAR, SPECIALIZATION) Chaminade University of Honolulu, BFA - Interior Design, 2004 University of Hawaii at Manoa, Architecture, 2000						EDUCATION (COLLEGE, DEGREE, YEAR, SPECIALIZATION) Honolulu Community College, AS Architectural Draft Technology, 2016					
REGISTRATION (TYPE, YEAR, STATE)						REGISTRATION (TYPE, YEAR, STATE)					
NAME		STATUS (Underline) <u>Full-Time</u> Part-Time		NAME		STATUS (Underline) <u>Full-Time</u> Part-Time					
TITLE OR POSITION			YEARS OF EXPERIENCE			TITLE OR POSITION			YEARS OF EXPERIENCE		
WITH THIS FIRM	WITH LAST FIRM (NAME & NO. OF YEARS)		WITH OTHER FIRMS			WITH THIS FIRM	WITH LAST FIRM (NAME & NO. OF YEARS)		WITH OTHER FIRMS		
EDUCATION (COLLEGE, DEGREE, YEAR, SPECIALIZATION)						EDUCATION (COLLEGE, DEGREE, YEAR, SPECIALIZATION)					
REGISTRATION (TYPE, YEAR, STATE)						REGISTRATION (TYPE, YEAR, STATE)					
NAME		STATUS (Underline) <u>Full-Time</u> Part-Time		NAME		STATUS (Underline) <u>Full-Time</u> Part-Time					
TITLE OR POSITION			YEARS OF EXPERIENCE			TITLE OR POSITION			YEARS OF EXPERIENCE		
WITH THIS FIRM	WITH LAST FIRM (NAME & NO. OF YEARS)		WITH OTHER FIRMS			WITH THIS FIRM	WITH LAST FIRM (NAME & NO. OF YEARS)		WITH OTHER FIRMS		
EDUCATION (COLLEGE, DEGREE, YEAR, SPECIALIZATION)						EDUCATION (COLLEGE, DEGREE, YEAR, SPECIALIZATION)					
REGISTRATION (TYPE, YEAR, STATE)						REGISTRATION (TYPE, YEAR, STATE)					

PERSONAL HISTORY STATEMENT OF PRINCIPALS AND ASSOCIATES WITHIN YOUR FIRM									
NAME Christopher H. Ball, PE, LEED AP, CCM			RESIDENT OF Hawaii		NAME Kyle T. G. Nishioka, PE			RESIDENT OF Hawaii	
TITLE Vice President/Civil Division Manager				TITLE Senior Civil Engineer					
YEARS OF EXPERIENCE 26	AS ASSOCIATE IN THIS FIRM 17	AS ASSOCIATE IN OTHER FIRMS	OTHER THAN ASSOCIATE 9	YEARS OF EXPERIENCE 25	AS ASSOCIATE IN THIS FIRM 21	AS ASSOCIATE IN OTHER FIRMS	OTHER THAN ASSOCIATE 4		
EDUCATION (COLLEGE, DEGREE, YEAR, SPECIALIZATION) University of California, Irvine, BS, 1997, Environmental Analysis & Design				EDUCATION (COLLEGE, DEGREE, YEAR, SPECIALIZATION) University of Hawaii at Manoa, BS, 1998, Civil Engineering					
MEMBERSHIP IN PROFESSIONAL ORGANIZATIONS American Society of Civil Engineers (ASCE); LEED AP; Certified Construction Manager-CMCI No.: 4382				MEMBERSHIP IN PROFESSIONAL ORGANIZATIONS					
REGISTRATION (TYPE, YEAR, STATE) Civil Engineer, 2006, Hawaii - PE-12144				REGISTRATION (TYPE, YEAR, STATE) Civil Engineer, 2002, Hawaii - PE-10631					
NAME Scott R. Suzuki, PE			RESIDENT OF Hawaii		NAME Kimberly Sekiguchi, PE			RESIDENT OF Hawaii	
TITLE Civil Engineer				TITLE Civil Engineer					
YEARS OF EXPERIENCE 14	AS ASSOCIATE IN THIS FIRM 7	AS ASSOCIATE IN OTHER FIRMS	OTHER THAN ASSOCIATE 7	YEARS OF EXPERIENCE 7	AS ASSOCIATE IN THIS FIRM 3	AS ASSOCIATE IN OTHER FIRMS	OTHER THAN ASSOCIATE 4		
EDUCATION (COLLEGE, DEGREE, YEAR, SPECIALIZATION) University of Hawaii at Manoa, BS, 2010, Civil Engineering University of Hawaii at Manoa, MS, 2013, Structural Engineering				EDUCATION (COLLEGE, DEGREE, YEAR, SPECIALIZATION) Gonzaga University, BS, 2016, Civil Engineering					
MEMBERSHIP IN PROFESSIONAL ORGANIZATIONS American Society of Civil Engineers (ASCE)				MEMBERSHIP IN PROFESSIONAL ORGANIZATIONS					
REGISTRATION (TYPE, YEAR, STATE) Civil Engineer, 2016, Hawaii - PE-16845				REGISTRATION (TYPE, YEAR, STATE) Civil Engineer, 2020, Hawaii - PE-19071					

CIVIL ENGINEERING DIVISION

PERSONAL HISTORY STATEMENT OF TECHNICAL PERSONNEL WITHIN YOUR FIRM							
NAME Emily Luke		STATUS (Underline) <u>Full-Time</u> Part-Time		NAME Ellyssa A. Gallego		STATUS (Underline) <u>Full-Time</u> Part-Time	
TITLE OR POSITION Civil Engineer		YEARS OF EXPERIENCE 7		TITLE OR POSITION Civil Engineer		YEARS OF EXPERIENCE 1	
WITH THIS FIRM 6	WITH LAST FIRM (NAME & NO. OF YEARS) Akinaka & Associates - 1 year	WITH OTHER FIRMS		WITH THIS FIRM 1	WITH LAST FIRM (NAME & NO. OF YEARS)	WITH OTHER FIRMS	
EDUCATION (COLLEGE, DEGREE, YEAR, SPECIALIZATION) Oregon State University, BS, 2017, Civil Engineering; American Society of Civil Engineers (ASCE)				EDUCATION (COLLEGE, DEGREE, YEAR, SPECIALIZATION) University of Hawaii at Manoa, BS, 2022, Civil Engineering			
REGISTRATION (TYPE, YEAR, STATE)				REGISTRATION (TYPE, YEAR, STATE)			
NAME Gladys L. Lin		STATUS (Underline) <u>Full-Time</u> Part-Time		NAME Trevor Yatomi		STATUS (Underline) <u>Full-Time</u> <u>Part-Time</u>	
TITLE OR POSITION Civil CADD Operator		YEARS OF EXPERIENCE 33		TITLE OR POSITION Civil Engineer		YEARS OF EXPERIENCE 1	
WITH THIS FIRM 25	WITH LAST FIRM (NAME & NO. OF YEARS) SFM - 3 years	WITH OTHER FIRMS 5		WITH THIS FIRM 1	WITH LAST FIRM (NAME & NO. OF YEARS)	WITH OTHER FIRMS	
EDUCATION (COLLEGE, DEGREE, YEAR, SPECIALIZATION) Ricardo Palma University, 1992, Bachelor Architecture Honolulu Community College, AS, 1994, Architectural Drafting				EDUCATION (COLLEGE, DEGREE, YEAR, SPECIALIZATION) University of Hawaii at Manoa, BS, 2022, Civil Engineering University of Hawaii at Manoa, MS, 2023, Civil Engineering			
REGISTRATION (TYPE, YEAR, STATE)				REGISTRATION (TYPE, YEAR, STATE)			
NAME		STATUS (Underline) <u>Full-Time</u> Part-Time		NAME		STATUS (Underline) <u>Full-Time</u> Part-Time	
TITLE OR POSITION		YEARS OF EXPERIENCE		TITLE OR POSITION		YEARS OF EXPERIENCE	
WITH THIS FIRM	WITH LAST FIRM (NAME & NO. OF YEARS)	WITH OTHER FIRMS		WITH THIS FIRM	WITH LAST FIRM (NAME & NO. OF YEARS)	WITH OTHER FIRMS	
EDUCATION (COLLEGE, DEGREE, YEAR, SPECIALIZATION)				EDUCATION (COLLEGE, DEGREE, YEAR, SPECIALIZATION)			
REGISTRATION (TYPE, YEAR, STATE)				REGISTRATION (TYPE, YEAR, STATE)			

CIVIL ENGINEERING DIVISION

PERSONAL HISTORY STATEMENT OF TECHNICAL PERSONNEL WITHIN YOUR FIRM							
NAME Arnold Koya		STATUS (Underline) <u>Full-Time</u> Part-Time		NAME Aaron Urasaki		STATUS (Underline) <u>Full-Time</u> Part-Time	
TITLE OR POSITION Structural Project Manager		YEARS OF EXPERIENCE 50		TITLE OR POSITION Structural CADD Operator		YEARS OF EXPERIENCE 29	
WITH THIS FIRM 41	WITH LAST FIRM (NAME & NO. OF YEARS) Taniyama Mitsunaga - 2 yrs.	WITH OTHER FIRMS 7		WITH THIS FIRM 15	WITH LAST FIRM (NAME & NO. OF YEARS) Allison Ide - 8 years	WITH OTHER FIRMS 6	
EDUCATION (COLLEGE, DEGREE, YEAR, SPECIALIZATION) Hilo Community College, AS, 1976, Bookkeeping Honolulu Community College, AS, 1972, Bachelor of Arts				EDUCATION (COLLEGE, DEGREE, YEAR, SPECIALIZATION) Honolulu Community College, AS, 1989, Architectural, Drafting Technology			
REGISTRATION (TYPE, YEAR, STATE)				REGISTRATION (TYPE, YEAR, STATE)			
NAME		STATUS (Underline) <u>Full-Time</u> Part-Time		NAME		STATUS (Underline) <u>Full-Time</u> Part-Time	
TITLE OR POSITION		YEARS OF EXPERIENCE		TITLE OR POSITION		YEARS OF EXPERIENCE	
WITH THIS FIRM	WITH LAST FIRM (NAME & NO. OF YEARS)	WITH OTHER FIRMS		WITH THIS FIRM	WITH LAST FIRM (NAME & NO. OF YEARS)	WITH OTHER FIRMS	
EDUCATION (COLLEGE, DEGREE, YEAR, SPECIALIZATION)				EDUCATION (COLLEGE, DEGREE, YEAR, SPECIALIZATION)			
REGISTRATION (TYPE, YEAR, STATE)				REGISTRATION (TYPE, YEAR, STATE)			
NAME		STATUS (Underline) <u>Full-Time</u> Part-Time		NAME		STATUS (Underline) <u>Full-Time</u> Part-Time	
TITLE OR POSITION		YEARS OF EXPERIENCE		TITLE OR POSITION		YEARS OF EXPERIENCE	
WITH THIS FIRM	WITH LAST FIRM (NAME & NO. OF YEARS)	WITH OTHER FIRMS		WITH THIS FIRM	WITH LAST FIRM (NAME & NO. OF YEARS)	WITH OTHER FIRMS	
EDUCATION (COLLEGE, DEGREE, YEAR, SPECIALIZATION)				EDUCATION (COLLEGE, DEGREE, YEAR, SPECIALIZATION)			
REGISTRATION (TYPE, YEAR, STATE)				REGISTRATION (TYPE, YEAR, STATE)			

PERSONAL HISTORY STATEMENT OF TECHNICAL PERSONNEL WITHIN YOUR FIRM					
NAME Lenny D. Villanueva		STATUS (Underline) <u>Full-Time</u> Part-Time		NAME	
TITLE OR POSITION Electrical Engineer		YEARS OF EXPERIENCE 51		TITLE OR POSITION	
WITH THIS FIRM 6	WITH LAST FIRM (NAME & NO. OF YEARS) Engineering Technology HI - 5 yrs	WITH OTHER FIRMS 40		WITH THIS FIRM	WITH LAST FIRM (NAME & NO. OF YEARS)
EDUCATION (COLLEGE, DEGREE, YEAR, SPECIALIZATION) Mapua Institute of Technology Philippines, BS, Electrical Engineering, 1968			EDUCATION (COLLEGE, DEGREE, YEAR, SPECIALIZATION)		
REGISTRATION (TYPE, YEAR, STATE)			REGISTRATION (TYPE, YEAR, STATE)		
NAME		STATUS (Underline) <u>Full-Time</u> Part-Time		NAME	
TITLE OR POSITION		YEARS OF EXPERIENCE		TITLE OR POSITION	
WITH THIS FIRM	WITH LAST FIRM (NAME & NO. OF YEARS)	WITH OTHER FIRMS		WITH THIS FIRM	WITH LAST FIRM (NAME & NO. OF YEARS)
EDUCATION (COLLEGE, DEGREE, YEAR, SPECIALIZATION)			EDUCATION (COLLEGE, DEGREE, YEAR, SPECIALIZATION)		
REGISTRATION (TYPE, YEAR, STATE)			REGISTRATION (TYPE, YEAR, STATE)		
NAME		STATUS (Underline) <u>Full-Time</u> Part-Time		NAME	
TITLE OR POSITION		YEARS OF EXPERIENCE		TITLE OR POSITION	
WITH THIS FIRM	WITH LAST FIRM (NAME & NO. OF YEARS)	WITH OTHER FIRMS		WITH THIS FIRM	WITH LAST FIRM (NAME & NO. OF YEARS)
EDUCATION (COLLEGE, DEGREE, YEAR, SPECIALIZATION)			EDUCATION (COLLEGE, DEGREE, YEAR, SPECIALIZATION)		
REGISTRATION (TYPE, YEAR, STATE)			REGISTRATION (TYPE, YEAR, STATE)		

PERSONAL HISTORY STATEMENT OF PRINCIPALS AND ASSOCIATES WITHIN YOUR FIRM								
NAME Edward C. Masuoka, PE			RESIDENT OF Hawaii		NAME Kenneth A. Santana, PE			RESIDENT Hawaii
TITLE Construction Manager				TITLE Construction Manager				
YEARS OF EXPERIENCE 68	AS ASSOCIATE IN THIS FIRM 31	AS ASSOCIATE IN OTHER FIRMS 29	OTHER THAN ASSOCIATE 8	YEARS OF EXPERIENCE 33	AS ASSOCIATE IN THIS FIRM 22	AS ASSOCIATE IN OTHER FIRMS 1	OTHER THAN ASSOCIATE 10	
EDUCATION (COLLEGE, DEGREE, YEAR, SPECIALIZATION) Rosepolytech, BS, 1955, Civil Engineering				EDUCATION (COLLEGE, DEGREE, YEAR, SPECIALIZATION) Loyola Marymount University BS, 1990, Civil Engineering				
MEMBERSHIP IN PROFESSIONAL ORGANIZATIONS				MEMBERSHIP IN PROFESSIONAL ORGANIZATIONS American Society of Civil Engineers (ASCE)				
REGISTRATION (TYPE, YEAR, STATE) Civil Engineer, 1963, Hawaii - PE-1510				REGISTRATION (TYPE, YEAR, STATE) Civil Engineer, 2000, Hawaii - PE-10071				
NAME			RESIDENT OF		NAME			RESIDENT OF
TITLE				TITLE				
YEARS OF EXPERIENCE	AS ASSOCIATE IN THIS FIRM	AS ASSOCIATE IN OTHER FIRMS	OTHER THAN ASSOCIATE	YEARS OF EXPERIENCE	AS ASSOCIATE IN THIS FIRM	AS ASSOCIATE IN OTHER FIRMS	OTHER THAN ASSOCIATE	
EDUCATION (COLLEGE, DEGREE, YEAR, SPECIALIZATION)				EDUCATION (COLLEGE, DEGREE, YEAR, SPECIALIZATION)				
MEMBERSHIP IN PROFESSIONAL ORGANIZATIONS				MEMBERSHIP IN PROFESSIONAL ORGANIZATIONS				
REGISTRATION (TYPE, YEAR, STATE)				REGISTRATION (TYPE, YEAR, STATE)				

CONSTRUCTION MANAGEMENT DIVISION

PERSONAL HISTORY STATEMENT OF TECHNICAL PERSONNEL WITHIN YOUR FIRM									
NAME Linda Fried			STATUS (Underline) <u>Full-Time</u> Part-Time		NAME Crisinaldo G. Braceros			STATUS (Underline) <u>Full-Time</u> Part-Time	
TITLE OR POSITION Construction Inspector			YEARS OF EXPERIENCE 39		TITLE OR POSITION Construction Inspector			YEARS OF EXPERIENCE 33	
WITH THIS FIRM 9	WITH LAST FIRM (NAME & NO. OF YEARS) Bower + Kubota - 4 yrs		WITH OTHER FIRMS 26		WITH THIS FIRM 5	WITH LAST FIRM (NAME & NO. OF YEARS)		WITH OTHER FIRMS 28	
EDUCATION (COLLEGE, DEGREE, YEAR, SPECIALIZATION) Santa Monica City College; International Facilities Management Association (IFMA) Hawaii Chapter; RS Means Certified Facilities Maint. Estimator; AMA Technical Certified Project Manager; OSHA Certified Construction Safety & Health Inspector					EDUCATION (COLLEGE, DEGREE, YEAR, SPECIALIZATION) National University of Manila, Philippines, B.S. Civil Engineering, 1970 Certified Construction Manager, CCM #5318				
REGISTRATION (TYPE, YEAR, STATE)					REGISTRATION (TYPE, YEAR, STATE)				
NAME Ed Kido			STATUS (Underline) <u>Full-Time</u> Part-Time		NAME Jerome Y. Tanaka			STATUS (Underline) <u>Full-Time</u> Part-Time	
TITLE OR POSITION Construction Inspector			YEARS OF EXPERIENCE 41		TITLE OR POSITION Construction Inspector			YEARS OF EXPERIENCE 45	
WITH THIS FIRM 18	WITH LAST FIRM (NAME & NO. OF YEARS) NTW & Assoc. - 3.5 years		WITH OTHER FIRMS 19.5		WITH THIS FIRM 5	WITH LAST FIRM (NAME & NO. OF YEARS) C & C Electric - 7 years		WITH OTHER FIRMS 33	
EDUCATION (COLLEGE, DEGREE, YEAR, SPECIALIZATION) Honolulu Community College, AS, 1982, Architectural Drafting Technology HDOT Certified - Soil & Aggregate, ACI Concrete Field-Testing Technician Grade I; DPP Erosions & Sediment Control Plan Coordinator					EDUCATION (COLLEGE, DEGREE, YEAR, SPECIALIZATION) University of Hawaii - Manoa, Geology & Geophysics, 1973				
REGISTRATION (TYPE, YEAR, STATE)					REGISTRATION (TYPE, YEAR, STATE)				
NAME Henry Butler			STATUS (Underline) <u>Full-Time</u> Part-Time		NAME Norman Takeya			STATUS (Underline) <u>Full-Time</u> Part-Time	
TITLE OR POSITION Construction Inspector			YEARS OF EXPERIENCE 27		TITLE OR POSITION Construction Inspector			YEARS OF EXPERIENCE 13	
WITH THIS FIRM 9	WITH LAST FIRM (NAME & NO. OF YEARS) TM - 9 mos.		WITH OTHER FIRMS 17		WITH THIS FIRM 8	WITH LAST FIRM (NAME & NO. OF YEARS) C & C Electric - 5 years		WITH OTHER FIRMS	
EDUCATION (COLLEGE, DEGREE, YEAR, SPECIALIZATION) DeVry Institute of Technology, Electrical/Electronics & Computer Science Technology; HDOT Certified - Soil & Aggregate; HDOT Certified - Bituminous (Asphalt); ACI Concrete Field Testing Technician Grade I					EDUCATION (COLLEGE, DEGREE, YEAR, SPECIALIZATION) Hawaii Community College, AS, Drafting/Surveying, 1980				
REGISTRATION (TYPE, YEAR, STATE)					REGISTRATION (TYPE, YEAR, STATE)				

CONSTRUCTION MANAGEMENT DIVISION

PERSONAL HISTORY STATEMENT OF TECHNICAL PERSONNEL WITHIN YOUR FIRM					
NAME Reid Honda		STATUS (Underline) <u>Full-Time</u> Part-Time		NAME	
TITLE OR POSITION Construction Inspector		YEARS OF EXPERIENCE 24		TITLE OR POSITION	
WITH THIS FIRM 7	WITH LAST FIRM (NAME & NO. OF YEARS) Kaya Builder - 17yr.	WITH OTHER FIRMS		WITH THIS FIRM	WITH LAST FIRM (NAME & NO. OF YEARS)
EDUCATION (COLLEGE, DEGREE, YEAR, SPECIALIZATION) Windward Community College, Liberal Arts, 1995 HDOT Certified in Field Sampling & Testing - Soils & Aggregate			EDUCATION (COLLEGE, DEGREE, YEAR, SPECIALIZATION)		
REGISTRATION (TYPE, YEAR, STATE)			REGISTRATION (TYPE, YEAR, STATE)		
NAME		STATUS (Underline) <u>Full-Time</u> Part-Time		NAME	
TITLE OR POSITION		YEARS OF EXPERIENCE		TITLE OR POSITION	
WITH THIS FIRM	WITH LAST FIRM (NAME & NO. OF YEARS)	WITH OTHER FIRMS		WITH THIS FIRM	WITH LAST FIRM (NAME & NO. OF YEARS)
EDUCATION (COLLEGE, DEGREE, YEAR, SPECIALIZATION)			EDUCATION (COLLEGE, DEGREE, YEAR, SPECIALIZATION)		
REGISTRATION (TYPE, YEAR, STATE)			REGISTRATION (TYPE, YEAR, STATE)		
NAME		STATUS (Underline) <u>Full-Time</u> Part-Time		NAME	
TITLE OR POSITION		YEARS OF EXPERIENCE		TITLE OR POSITION	
WITH THIS FIRM	WITH LAST FIRM (NAME & NO. OF YEARS)	WITH OTHER FIRMS		WITH THIS FIRM	WITH LAST FIRM (NAME & NO. OF YEARS)
EDUCATION (COLLEGE, DEGREE, YEAR, SPECIALIZATION)			EDUCATION (COLLEGE, DEGREE, YEAR, SPECIALIZATION)		
REGISTRATION (TYPE, YEAR, STATE)			REGISTRATION (TYPE, YEAR, STATE)		

CONSTRUCTION MANAGEMENT DIVISION

OUTSIDE ASSOCIATES AND CONSULTANTS USUALLY EMPLOYED

DISCIPLINE	NAME OF FIRM OR INDIVIDUAL	DISCIPLINE	NAME OF FIRM OR INDIVIDUAL
Architects	In-House	Mechanical Engineering	MCE International, Inc. InSynergy Engineering Inc. Katayama & Associates, Inc.
Civil Engineering	In-House	Sanitary Engineering	Kennedy Jenks
Electrical Engineering	In-House ECS, Inc. Engineering Technology Hawaii Inc. InSynergy Engineering Inc. Nakamura Oyama & Associates, Inc.	Structural Engineering	In-House KSF, Inc. i3 Engineers, Inc
Environmental	EnviroServices & Training Center, LLC Element Environmental, LLC EMET Environmeteo Services, Inc. Planning Solutions, Inc.	Surveying	ControlPoint Surveying, Inc. Imata & Associates, Inc. ESH, Inc. Esaki Surveying & Mapping Inc.
Estimators	In-House J. Uno & Associates, Inc. Cumming Corporation	Other Consultants	The Design Ng' Company - Graphics Consolidated Engineering, Inc. - Special Inspections Construction Labs, Inc. - Job Control Testing DL Adams & Associates, Inc. - Acoustical & AV Eng. Geolabs, Inc. - Geotechnical Engineers Hirata & Associates, Inc. - Geotechnical Engineers Y. Ebisu & Associates - Acoustical Engineers Fehr & Peers - Traffic Engineers
Interior Design	In-House		
Landscape Architects	Aolani Yamasato, LA PBR Hawaii, Inc.		

ERRORS AND OMISSIONS INSURANCE

DOES YOUR FIRM HAVE ERRORS & OMISSION (E&O) INSURANCE? (Underline)			AMOUNT OF COVERAGE PER CLAIM	AMOUNT OF DEDUCTIBLE
<u>YES</u>	NO	PROJECT INSURANCE	\$5,000,000	\$ 75,000

Submit proof of insurance or insurability from your insurance carrier with this form.

(See attached copy of a CNA policy declaration indicating that we have E&O Insurance amounting to \$1,000,000 per claim and \$2,000,000 aggregate per policy year. We have been issued a E&O policies from this firm continuously since 1984.

**SUMMARY OF YOUR FIRM'S COMPLETED AND PRESENT PROJECTS DURING THE LAST TEN YEARS
AS A PRIME A/E CONSULTANT**

TOTAL NUMBER OF COMPLETED PROJECTS	188
TOTAL ESTIMATED CONSTRUCTION COST OF COMPLETED PROJECTS	\$1,891,026,984
TOTAL NUMBER OF PRESENT PROJECTS	52
TOTAL ESTIMATED CONSTRUCTION COST OF PRESENT PROJECTS	\$865,904,437

AS AN ASSOCIATE WITH OTHER A/E CONSULTANTS

TOTAL NUMBER OF COMPLETED PROJECTS	130
TOTAL ESTIMATED CONSTRUCTION COST OF COMPLETED PROJECTS (ONLY THE PORTION OF WORK FOR WHICH YOUR FIRM WAS RESPONSIBLE)	\$1,528,333,300
TOTAL NUMBER OF PRESENT PROJECTS	24
TOTAL ESTIMATED CONSTRUCTION COST OF PRESENT PROJECTS (ONLY THE PORTION OF WORK FOR WHICH YOUR FIRM IS RESPONSIBLE)	\$715,327,000

CLASS OF WORK AND PROJECT TYPE SPECIALIZATION

TYPE OF PROJECT	TOTAL NO. OF COMPLETED PROJECTS	TOTAL ESTIMATED CONSTRUCTION COST	TOTAL ESTIMATED PROJECT SIZE (G.S.F.)
Administrative Facilities	17	\$48,018,037	146,879 sf.
Airports Facilities - Terminal; Hangars	17	\$355,536,250	1,619,360 sf.
Commercial Facilities	14	\$16,076,902	162,750 sf.
Commercial Harbors	15	\$188,689,100	629,651 sf.
Community Facilities	5	\$819,132	8,000 sf.
Construction Management	32	\$307,268,000	694,700 sf.
Educational Facilities	41	\$837,902,263	267,100,285 sf.
Correctional Facilities	5	\$25,520,000	36,700 sf.

Categorize your firm's class for work during the last ten years by project type. Examples of project types include Educational, Commercial, Industrial, Residential, Health Care, Correctional and Judicial Facilities. Work may also be categorized as planning, civil sitework, renovation/alteration, architectural barrier removal, fire alarm system, etc.

**SUMMARY OF YOUR FIRM'S COMPLETED AND PRESENT PROJECTS DURING THE LAST TEN YEARS
AS A PRIME A/E CONSULTANT**

TOTAL NUMBER OF COMPLETED PROJECTS	188
TOTAL ESTIMATED CONSTRUCTION COST OF COMPLETED PROJECTS	\$1,891,026,984
TOTAL NUMBER OF PRESENT PROJECTS	52
TOTAL ESTIMATED CONSTRUCTION COST OF PRESENT PROJECTS	\$865,904,437

AS AN ASSOCIATE WITH OTHER A/E CONSULTANTS

TOTAL NUMBER OF COMPLETED PROJECTS	130
TOTAL ESTIMATED CONSTRUCTION COST OF COMPLETED PROJECTS (ONLY THE PORTION OF WORK FOR WHICH YOUR FIRM WAS RESPONSIBLE)	\$1,528,333,300
TOTAL NUMBER OF PRESENT PROJECTS	24
TOTAL ESTIMATED CONSTRUCTION COST OF PRESENT PROJECTS (ONLY THE PORTION OF WORK FOR WHICH YOUR FIRM IS RESPONSIBLE)	\$715,327,000

CLASS OF WORK AND PROJECT TYPE SPECIALIZATION

TYPE OF PROJECT	TOTAL NO. OF COMPLETED PROJECTS	TOTAL ESTIMATED CONSTRUCTION COST	TOTAL ESTIMATED PROJECT SIZE (G.S.F.)
Healthcare Facilities	14	\$25,267,500	878,550 sf.
Housing Facilities	35	\$306,516,500	4,009,812 sf.
Industrial Facilities	21	\$69,886,600	138,730 sf.
Recreational & Sport Facilities	28	\$53,647,000	401,267 sf.
Highways Projects	13	\$61,035,000	1,007,390 sf.
Infrastructure Projects	61	\$1,120,678,000	7,569,700 sf.

Categorize your firm's class for work during the last ten years by project type. Examples of project types include Educational, Commercial, Industrial, Residential, Health Care, Correctional and Judicial Facilities. Work may also be categorized as planning, civil sitework, renovation/alteration, architectural barrier removal, fire alarm system, etc.

PRESENT/COMPLETED PROJECTS IN WHICH YOUR FIRM IS/WAS DESIGNATED THE PRIME CONSULTANT (BY TYPE)

(LIST A MAXIMUM OF 10 PROJECTS FOR EACH DISCIPLINE/TYPE OF WORK BEING APPLIED FORM. LIST PROJECTS THAT REFLECT YOUR ABILITY TO PROVIDE QUALITY WORK FOR YOUR REQUESTED PROJECTS.)

TYPE: **ARCHITECTURAL (PRIME CONSULTANT)**

NO.	YEAR	NAME & LOCATION OF PROJECT	NAME OF LEAD DESIGNER	OWNER NAME, ADDRESS, PHONE NO.	EST. CONST. COST	DURATION (MONTHS)	% COMPLETED	
							DESIGN	CONST.
1	2022	KOA RIDGE DEVELOPMENT SENIOR & FAMILY AFFORDABLE HOUSING, PHASES 1 & 2 WAIPAHU, OAHU, HAWAII	STEVEN WONG, AIA	KOA VISTA 1 LLP 1388 ALA MOANA BLVD, #7301 HONOLULU, HAWAII 96814 GARY FURUTA E: GARY@GSFHI.COM P: (808) 429-7815	\$ 68,000,000	12 MONTHS	100%	5%
2	2022	POPEYE'S KITCHEN KANEHOE, OAHU, HAWAII	STEVEN WONG, AIA	SEAN & LORI UEZU (808) 841-6600 LORI@POPEYESHAWAII.COM	\$ 5,000,000	12 MONTHS	100%	0%
3	2022	COUNTY OF HAWAII PUBLIC SAFETY COMPLEX IMPROVEMENTS HILO, ISLAND OF HAWAII	STEVEN WONG, AIA	COUNTY OF HAWAII DEPT. OF PUBLIC WORKS - BUILDING DIV. 101 PAUAHI STREET, SUITE 7 HILO, HAWAII 96720 JAMES IMANAKA E: JAMES.IMANAKA@HAWAIICOUNTY.GOV P: (808) 961-8371	\$ 5,000,000	12 MONTHS	100%	0%
4	2020	PAHOA ELEM. SCHOOL MASTER PLAN PAHOA, ISLAND OF HAWAII	STEVEN WONG, AIA	STATE OF HAWAII DEPARTMENT OF EDUCATION MITCH TAMAYORI E: MITCH.TAMAYORI@K12.HI.US P: (808) 733-5660	\$ 50,000,000	24 MONTHS	35%	0%
5	2019	MOKAPU ELEMENTARY SCHOOL CAMPUS IMPROVEMENTS KANEHOE, OAHU, HAWAII	STEVEN WONG, AIA	STATE OF HAWAII DEPARTMENT OF EDUCATION BRENDA LOWREY E: BRENDA.LOWREY@K12.HI.US P: (808) 733-4660	\$ 124,000,000	24 MONTHS	100%	5%
6	2017	NATIONAL KIDNEY FOUNDATION NEW ADMINISTRATION BUILDING KAPOLEI, OAHU, HAWAII	STEVEN WONG, AIA	NATIONAL KIDNEY FOUNDATION OF HI 1314 SOUTH KING STREET, #1555 HONOLULU, HAWAII 96814 GLEN HAYASHIDA E: GLEN@KIDNEYHI.ORG P: (808) 589-5970	\$ 13,500,000	12 MONTHS	50%	0%
7	2017	HALAWA CORRECTIONAL FACILITY CONSOLIDATE HEALTH CARE AIEA, OAHU, HAWAII	STEVEN WONG, AIA	STATE OF HAWAII DEPT. OF ACCOUNTING & GEN. SVCS. 1151 PUNCHBOWL STREET, ROOM 427 HONOLULU, HAWAII 96813 RICHARD LOUIS E: RICHARD.J.LOUIS@HAWAII.GOV P: (808) 586-0474	\$ 7,800,000	12 MONTHS	100%	0%
8	2016	EAST KAPOLEI HIGH SCHOOL - HO'OPILI KAPOLEI, OAHU, HAWAII	STEVEN WONG, AIA	STATE OF HAWAII DEPARTMENT OF EDUCATION BRENDA LOWREY E: BRENDA.LOWREY@K12.HI.US P: (808) 733-4660	\$ 500,000,000	24 MONTHS	5%	0%

PRESENT/COMPLETED PROJECTS IN WHICH YOUR FIRM IS/WAS DESIGNATED THE PRIME CONSULTANT (BY TYPE)

(LIST A MAXIMUM OF 10 PROJECTS FOR EACH DISCIPLINE/TYPE OF WORK BEING APPLIED FORM. LIST PROJECTS THAT REFLECT YOUR ABILITY TO PROVIDE QUALITY WORK FOR YOUR REQUESTED PROJECTS.)

ARCHITECTURAL (PRIME CONSULTANT)

NO.	YEAR	NAME & LOCATION OF PROJECT	NAME OF LEAD DESIGNER	OWNER NAME, ADDRESS, PHONE NO.	EST. CONST. COST	DURATION (MONTHS)	% COMPLETED	
							DESIGN	CONST.
9	2015	KAUAI COMMUNITY CORRECTIONAL CENTER, NEW SEGREGATION HOUSING LIHUE, KAUAI, HAWAII	STEVEN WONG, AIA	STATE OF HAWAII DEPT. OF ACCOUNTING & GEN. SVCS. 1151 PUNCHBOWL STREET, ROOM 427 HONOLULU, HAWAII 96813 WADE ISHII E: WADE.T.ISHII@HAWAII.GOV P: (808) 586-0464	\$ 15,000,000	12 MONTHS	100%	100%
10	2013	SOLOMON ELEMENTARY SCHOOL CAMPUS IMPROVEMENTS WAHIAWA, OAHU, HAWAII	STEVEN WONG, AIA	STATE OF HAWAII DEPARTMENT OF EDUCATION HONOLULU, HAWAII 96816 BRENDA LOWREY E: BRENDA.LOWREY@K12.HI.US P: (808) 733-4660	\$ 78,000,000	24 MONTHS	100%	100%

PRESENT/COMPLETED PROJECTS IN WHICH YOUR FIRM IS/WAS DESIGNATED THE PRIME CONSULTANT (BY TYPE)

(LIST A MAXIMUM OF 10 PROJECTS FOR EACH DISCIPLINE/TYPE OF WORK BEING APPLIED FORM. LIST PROJECTS THAT REFLECT YOUR ABILITY TO PROVIDE QUALITY WORK FOR YOUR REQUESTED PROJECTS.)

TYPE: CIVIL (PRIME CONSULTANT)

NO.	YEAR	NAME & LOCATION OF PROJECT	NAME OF LEAD DESIGNER	OWNER NAME, ADDRESS, PHONE NO.	EST. CONST. COST	DURATION (MONTHS)	% COMPLETED	
							DESIGN	CONST.
1	2022	DOT HIGHWAYS SAFETY IMPROVEMENTS STATEWIDE VARIOUS LOCATIONS, HAWAII	CHRIS BALL, PE	STATE OF HAWAII DEPT. OF TRANSPORTATION HIGHWAYS DIVISION 601 KAMOKILA BLVD, ROOM 688 KAPOLEI, HAWAII 96707 HENRY KENNEDY P: (808) 692-7547	\$ 10,000,000	7 MONTHS	100%	50%
2	2020	KAMEHAMEHA HIGHWAY KAMANAMANANUI ROAD AND WILIKINA DRIVE REHABILITATION WAHIAWA, OAHU, HAWAII	CHAD MCDONALD, PE	STATE OF HAWAII DEPT. OF TRANSPORTATION HIGHWAYS DIVISION 601 KAMOKILA BLVD, ROOM 688 KAPOLEI, HAWAII 96707 HENRY KENNEDY P: (808) 692-7547	\$ 24,000,000	6 MONTHS	100%	70%
3	2019	MAUNALUA BAY BOAT RAMP REPAIRS HONOLULU, OAHU, HAWAII	CHRIS BALL, PE	STATE OF HAWAII DEPT. OF LAND & NATURAL RESOURCES 1151 PUNCHBOWL ST, HON, HI 96813 FINN MCCALL P: (808) 587-0122	\$ 405,000	6 MONTHS	100%	100%
4	2018	KAMEHAMEHA SCHOOLS WAIAWA DEVELOPMENT PRELIMINARY ENGINEERING WAIAWA, OAHU, HAWAII	CHAD MCDONALD, PE	KAMEHAMEHA SCHOOLS 567 SOUTH KING STREET HONOLULU, HAWAII 96813 MICHELE SWARTMAN P: (808) 534-8114	N/A	18 MONTHS	100%	0%
5	2016	LANAI RUNWAY EXTENSION LANAI, HAWAII	CHRIS BALL, PE	PULAMA LANAI 733 BISHOP ST., SUITE 1500 HONOLULU, HAWAII 96813 KEIKI-PUA DANCIL P: (808) 237-2216	\$ 8,000,000	20 MONTHS	100%	0%
6	2016	MALAKOLE INDUSTRIAL PARK SUBDIVISION KAPOLEI, OAHU, HAWAII	CHAD MCDONALD, PE	NAN, INC. 636 LAUMAKA STREET HONOLULU, HAWAII 96819 NAN CHUL SHIN P: (808) 842-4929	\$ 4,500,000	8 MONTHS	100%	100%
7	2016	AMP 38 INFRASTRUCTURE AND SITE IMPROVEMENTS VARIOUS LOCATIONS, KAUAI, HAWAII	CHRIS BALL, PE	STATE OF HAWAII HAWAII PUBLIC HOUSING AUTHORITY 1002 N. KING STREET HONOLULU, HAWAII 96817 GORDON CHONG P: (808) 832-5313	\$ 3,500,000	10 MONTHS	100%	100%

PRESENT/COMPLETED PROJECTS IN WHICH YOUR FIRM IS/WAS DESIGNATED THE PRIME CONSULTANT (BY TYPE)

(LIST A MAXIMUM OF 10 PROJECTS FOR EACH DISCIPLINE/TYPE OF WORK BEING APPLIED FORM. LIST PROJECTS THAT REFLECT YOUR ABILITY TO PROVIDE QUALITY WORK FOR YOUR REQUESTED PROJECTS.)

TYPE: **CIVIL (PRIME CONSULTANT)**

NO.	YEAR	NAME & LOCATION OF PROJECT	NAME OF LEAD DESIGNER	OWNER NAME, ADDRESS, PHONE NO.	EST. CONST. COST	DURATION (MONTHS)	% COMPLETED	
							DESIGN	CONST.
8	2015	KAMEHAMEHA HEIGHTS WATER SYSTEM IMPROVEMENTS, PT. III HONOLULU, OAHU, HAWAII	CHAD MCDONALD, PE	CITY & COUNTY OF HONOLULU BOARD OF WATER SUPPLY 630 SOUTH BERETANIA STREET HONOLULU, HAWAII 96843 P: (808) 748-5713	\$ 8,300,000	30 MONTHS	100%	75%
9	2015	KAMEHAMEHA V HIGHWAY MAKAKUPAIA BRIDGE REPLACEMENT KAUNAKAKAI, MOLOKAI, HAWAII	CHAD MCDONALD, PE	STATE OF HAWAII DEPT. OF TRANSPORTATION HIGHWAYS DIVISION 601 KAMOKILA BLVD., RM 611 KAPOLEI, HAWAII 96707 JAMES FU P: (808) 692-7613	\$ 6,000,000	28 MONTHS	100%	0%
10	2014	KAPOLEI INTERCHANGE COMPLEX, PH3 KAPOLEI, OAHU, HAWAII	CHRIS BALL, PE	AINA NUI CORPORATION 1001 KAMOKILA BLVD., STE. 250 KAPOLEI, HAWAII 96707 STEVE KELLY P: (808) 674-3289	\$ 40,000,000	36 MONTHS	100%	5%

PRESENT/COMPLETED PROJECTS IN WHICH YOUR FIRM IS/WAS DESIGNATED THE PRIME CONSULTANT (BY TYPE)

(LIST A MAXIMUM OF 10 PROJECTS FOR EACH DISCIPLINE/TYPE OF WORK BEING APPLIED FORM. LIST PROJECTS THAT REFLECT YOUR ABILITY TO PROVIDE QUALITY WORK FOR YOUR REQUESTED PROJECTS.)

TYPE: **CIVIL (SUB-CONSULTANT)**

NO.	YEAR	NAME & LOCATION OF PROJECT	OWNER NAME, ADDRESS, PHONE NO.	EST. CONST. COST		DURATION (MONTHS)	PRIME FIRM ASSOCIATED WITH	% COMPLETED	
				ENTIRE PROJECT	FIRM'S WORK			DESIGN	CONST.
1	2021	NGIS CONSTRUCT CENTRAL LODGING OKINAWA OKINAWA, JAPAN	CNIC FACILITIES & ACQUISITION 5720 INTEGRITY DRIVE, LASSEN BLDG 457 MILLINGTON, TN 38055 P: (901) 874-6680	\$ 110,000,000	\$ 7,500,000	16 MONTHS	MASON ARCHITECTS	90%	0%
2	2021	FY21 MILCON P-802 BASE WAREHOUSE MCB GUAM, FINEGAYAN, GUAM	NAVFAC PACIFIC 258 MAKALAPA DRIVE, SUITE 100 JBPHH, HAWAII 96860-3134 OLGA MUNA P: (671) 355-8030	\$ 36,500,000	\$ 4,000,000	9 MONTHS	DESIGN PARTNERS, INC.	100%	20%
3	2021	MAKAHA BRIDGES NO. 3 & 3A REPLACEMENT MAKAHA, OAHU, HAWAII	STATE OF HAWAII DEPT. OF TRANSPORTATION HIGHWAYS DIVISION 601 KAMOKILA BLVD, ROOM 688 KAPOLEI, HAWAII 96707 HENRY KENNEDY P: (808) 692-7547	\$ 17,000,000	\$ 10,000,000	5 MONTHS	GRACE PACIFIC, LLC	100%	30%
4	2020	WAILOA FCP PL 84-99 STREAM REPAIR HILO, ISLAND OF HAWAII	US ARMY CORPS OF ENGINEERS HONOLULU ENG. DISTRICT BUILDING 252 FORT SHAFTER, HAWAII 96858	\$ 6,800,000	\$ 6,800,000	6 MONTHS	NAN, INC.	100%	100%
5	2020	STRAUB MEDICAL CENTER REDEVELOPMENT PARKING STRUCTURE HONOLULU, OAHU, HAWAII	HAWAII PACIFIC HEALTH STRAUB MEDICAL CENTER 55 MERCHANT ST, 27TH FLOOR HONOLULU, HAWAII 96813 P: (808) 522-4000	\$ 23,000,000	\$ 1,000,000	20 MONTHS	HDR	90%	0%
6	2018	KALANIHO'OKAHA COPE COMMUNITY LEARNING CENTER NANAKULI, OAHU, HAWAII	KAMEHAMEHA SCHOOLS 567 SOUTH KING STREET HONOLULU, HAWAII 96813 GARY NISHIOKU P: (808) 534-8114	\$ 5,500,000	\$ 800,000	18 MONTHS	KIEWIT BUILDING GROUP	100%	100%
7	2017	A380 IMPROVEMENTS AT GATE 29 & 34, HNL INTERNATIONAL AIRPORT HONOLULU, OAHU, HAWAII	DEPT. OF TRANSPORTATION AIRPORTS DIVISION 400 RODGERS BLVD, 7TH FLOOR HONOLULU, HAWAII 96819 LYLE ODA P: (808) 838-8831	\$ 4,700,000	\$ 1,500,000	12 MONTHS	NAN, INC.	100%	100%
8	2015	FY14 MCON P-884 MCB AVIATION SIMILATOR FACILITY MCBH, OAHU, HAWAII	NAVFAC PACIFIC 258 MAKALAPA DRIVE, SUITE 100 JBPHH, HAWAII 96860-3134 ANN SAKI-ELI P: (808) 474-5356	\$ 32,000,000	\$ 6,500,000	16 MONTHS	ALLIED PACIFIC BUILDERS, INC.	100%	100%

PRESENT/COMPLETED PROJECTS IN WHICH YOUR FIRM IS/WAS DESIGNATED THE PRIME CONSULTANT (BY TYPE)

(LIST A MAXIMUM OF 10 PROJECTS FOR EACH DISCIPLINE/TYPE OF WORK BEING APPLIED FORM. LIST PROJECTS THAT REFLECT YOUR ABILITY TO PROVIDE QUALITY WORK FOR YOUR REQUESTED PROJECTS.)

TYPE: **CIVIL (SUB-CONSULTANT)**

NO.	YEAR	NAME & LOCATION OF PROJECT	OWNER NAME, ADDRESS, PHONE NO.	EST. CONST. COST		DURATION (MONTHS)	PRIME FIRM ASSOCIATED WITH	% COMPLETED	
				ENTIRE PROJECT	FIRM'S WORK			DESIGN	CONST.
9	2014	FY13 COMBAT AVIATION BRIGADE COMPLEX, PH 2 WHEELER ARMY AIRFIELD, OAHU, HAWAII	U.S. ARMY CORPS OF ENGINEERS HONOLULU DISTRICT BLDG 230, ROOM 103 FT. SHAFTER, HAWAII 96858 SEAN HACKETT P: (808) 835-4380	\$ 55,000,000	\$ 8,000,000	30 MONTHS	NAN, INC.	100%	100%
10	2013	KAMEHAMEHA SCHOOLS COMMUNITY LEARNING CENTER NANAKULI, OAHU, HAWAII	KAMEHAMEHA SCHOOLS 567 SOUTH KING STREET HONOLULU, HAWAII 96813 GARY NISHIOKU P: (808) 534-8114	\$ 32,000,000	\$ 3,500,000	14 MONTHS	MVE INSTITUTIONAL	100%	100%

PRESENT/COMPLETED PROJECTS IN WHICH YOUR FIRM IS/WAS DESIGNATED THE PRIME CONSULTANT (BY TYPE)

(LIST A MAXIMUM OF 10 PROJECTS FOR EACH DISCIPLINE/TYPE OF WORK BEING APPLIED FORM. LIST PROJECTS THAT REFLECT YOUR ABILITY TO PROVIDE QUALITY WORK FOR YOUR REQUESTED PROJECTS.)

TYPE: CONSTRUCTION MANAGEMENT (PRIME CONSULTANT)

NO.	YEAR	NAME & LOCATION OF PROJECT	NAME OF LEAD DESIGNER	OWNER NAME, ADDRESS, PHONE NO.	EST. CONST. COST	DURATION (MONTHS)	% COMPLETED	
							DESIGN	CONST.
1	2022	HOME INSPECTIONS & CONSTRUCTION MONITORING SERVICES VARIOUS LOCATIONS, STATEWIDE	CHAD MCDONALD, PE, CCM	STATE OF HAWAII DEPT. OF HAWAIIAN HOME LANDS 91-5420 KAPOLEI PARKWAY KAPOLEI, HAWAII 96707 MALIA COX P: (808) 620-9485	\$ 20,000,000	36 MONTHS	~	50%
2	2020	CONSTRUCTION MONITORING OF HHFC PORTFOLIO CAPITAL IMPROVEMENTS VARIOUS LOCATIONS, STATEWIDE	CHAD MCDONALD, PE, CCM	DBEDT - HAWAII HOUSING FINANCE AND DEVELOPMENT CORPORATION 677 QUEEN STREET, SUITE 300 HONOLULU, HAWAII 96813 DEBBY SHIN P: (808) 587-3173	\$ 20,000,000	24 MONTHS	~	100%
3	2019	HANGAR 110 RENOVATION, PH5 KALAELOA AIRPORT, OAHU, HAWAII	CRISINALDO BRACEROS, CCM	DEPT. OF TRANSPORTATION AIRPORTS DIVISION 400 RODGERS BLVD, 7TH FLOOR HONOLULU, HAWAII 96819 JONATHAN YOSHIDA P: (808) 838-8875	\$ 4,000,000	10 MONTHS	~	100%
4	2019	COMPLETE STREETS - KAILUA ROAD KAILUA ROAD IMPROVEMENTS KAILUA, OAHU, HAWAII	KENNETH SANTANA, PE	C&C OF HONOLULU DEPT. OF TRANSPORTATION SERVICES 650 S. KING STREET, 3RD FLOOR HONOLULU, HAWAII 96813 KELLY AKASAKI P: (808) 768-8320	\$ 600,000	6 MONTHS	~	100%
5	2018	MOANALUA HIGH SCHOOL PERFORMING ARTS CENTER, PH2B HONOLULU, HAWAII	KENNETH SANTANA, PE	STATE OF HAWAII DEPARTMENT OF EDUCATION P.O. BOX 2360, HONOLULU, HI 96804 JADINE URASAKI P: (808) 586-0429	\$ 26,000,000	20 MONTHS	~	100%
6	2018	MILILANI MIDDLE SCHOOL NEW CLASSROOM BUILDING MILILANI, OAHU, HAWAII	EDWARD MASUOKA, PE	STATE OF HAWAII DEPARTMENT OF EDUCATION P.O. BOX 2360, HONOLULU, HI 96804 JADINE URASAKI P: (808) 586-0429	\$ 21,000,000	24 MONTHS	~	100%
7	2017	OAHU - AREA 07 SCHOOLS VARIOUS LOCATIONS, CM SERVICES VARIOUS LOCATIONS, OAHU, HAWAII	CHAD MCDONALD, PE, CCM	STATE OF HAWAII DEPARTMENT OF EDUCATION P.O. BOX 2360, HONOLULU, HI 96804 JADINE URASAKI P: (808) 586-0429	\$ 35,000,000	48 MONTHS	~	90%

PRESENT/COMPLETED PROJECTS IN WHICH YOUR FIRM IS/WAS DESIGNATED THE PRIME CONSULTANT (BY TYPE)

(LIST A MAXIMUM OF 10 PROJECTS FOR EACH DISCIPLINE/TYPE OF WORK BEING APPLIED FORM. LIST PROJECTS THAT REFLECT YOUR ABILITY TO PROVIDE QUALITY WORK FOR YOUR REQUESTED PROJECTS.)

TYPE: CONSTRUCTION MANAGEMENT (PRIME CONSULTANT)

NO.	YEAR	NAME & LOCATION OF PROJECT	NAME OF LEAD DESIGNER	OWNER NAME, ADDRESS, PHONE NO.	EST. CONST. COST	DURATION (MONTHS)	% COMPLETED	
							DESIGN	CONST.
8	2015	OGG UPGRADE OF EDS FOR TSA KAHULUI AIRPORT KAHULUI, MAUI, HAWAII	CHRIS BALL, PE, CCM	STATE OF HAWAII DEPT. OF TRANSPORTATION AIRPORTS DIVISION 400 RODGERS BLVD, SUITE 700 HONOLULU, HAWAII 96819 GREG GARCIA P: (808) 838-8829	\$ 3,300,000	8 MONTHS	~	100%
9	2015	HNL INTERNATIONAL AIRPORT CONCESSION IMPROVEMENTS (DIAMOND HEAD & EWA CONCOURSES) HONOLULU, OAHU, HAWAII	GARY NAKATSUKA, AIA	STATE OF HAWAII DEPT. OF TRANSPORTATION AIRPORTS DIVISION 400 RODGERS BLVD, SUITE 700 HONOLULU, HAWAII 96819 DIANA LEE P: (808) 838-8825	\$ 34,500,000	30 MONTHS	~	100%
10	2014	HNL INTERNATIONAL AIRPORT GATES 6-62 TERMINAL SHUTTLE IMPROVEMENTS HONOLULU, OAHU, HAWAII	KENNETH SANTANA, PE	STATE OF HAWAII DEPT. OF TRANSPORTATION AIRPORTS DIVISION 400 RODGERS BLVD, SUITE 700 HONOLULU, HAWAII 96819 DIANA LEE P: (808) 838-8825	\$ 9,700,000	36 MONTHS	~	100%

Explain firm's individual project assignment, project management structure, project execution (work flow and responsibilities) and quality control process. In the event the spaces provided on this form are not sufficient for entries, or if you wish to furnish additional information, it may be inserted here or on separate sheets, with appropriate references.

Mitsunaga & Associates, Inc. (MAI) combines the specialized strengths of planning, architecture, and engineering within one local office. The MAI Team has combined innovation and creativity to provide exceptional architecture, engineering and planning services in Hawaii and overseas. MAI has provided state-of-the-art planning and design services, working in partnership with our clients in expanding on the vision for smart growth, while developing a vibrant connection to the community that will be served. Our appreciation for the cultural context and unique demands of each project has shaped and inspired our work.

Our firm has been based in Honolulu, Hawaii for over 42 years, occupying two floors of the Pacific Grand Building. MAI was started as a sole proprietorship in 1968 and was incorporated in 1981. Through the years, the firm has completed a wide variety of projects for the State, County, Federal, and private agencies throughout the State of Hawaii and abroad. Today, Mitsunaga & Associates, Inc. is a small-business and women-owned minority firm.

The combination of experience and knowledge in one location applied to all projects enables the MAI Team to deliver high-quality, award-winning designs in a timely manner and gives the MAI Team the unique ability to respond to issues and resolve problems efficiently.

In addition, qualities that MAI offers that are unique to our firm include:

- Being a multi-discipline firm with in-house architects, civil and structural engineers, and construction managers.
- Having multiple in-house disciplines that allow for rapid response capabilities.
- Using our depth of staff and resources allows for independent third-party quality control review of documents and technical support.
- Actual construction experience of key personnel.
- Support services of general contractor, Mitsunaga Construction, Inc. (MCI) provides valuable constructability reviews, accurate cost estimates and reviews, as well as assistance in negotiating change orders.

Mitsunaga & Associates, Inc. utilizes an integrated approach to problem solving. Members of the architectural, civil engineering, structural engineering, and construction management divisions collaborate at the project planning state and at strategic points of each project. The combination of knowledge and experience in one location enables our firm to deliver high-quality services to our clients. This approach and commitment to quality service remains the priority for MAI.

MAI's team can address the project elements by identifying specific needs, mobilize the appropriate staff, and manage implementation. Our services and expertise are tailored to each specific project, where comprehensive project controls are integrated into the process to help manage critical issues of time, cost, scope, quality, and safety. MAI will enhance and compliment the strengths of the agencies they work with by providing a comprehensive set of resources and skills that is critical to successful project delivery. The depth of resources and experience of our staff can provide guidance, has a proven track record, and possesses the technical competence to ensure a successful project.

Explain firm's individual project assignment, project management structure, project execution (work flow and responsibilities) and quality control process. In the event the spaces provided on this form are not sufficient for entries, or if you wish to furnish additional information, it may be inserted here or on separate sheets, with appropriate references.

MAI is committed to providing quality professional services that will:

- Provide an aesthetic and/or functional design that will meet the requirements of the users while protecting the surrounding environment and conforming to government regulations, including those regarding the health, safety, and welfare of the public.
- Provide a design within budget.
- Provide a design within the schedule requirements of the project. This relates not only to the design process, but also to the construction period specified for the project.

Mitsunaga & Associates, Inc. (MAI) has the capability and capacity to perform the work required for projects in the required time. Our firm's capability is evident in the successful completion of community planning, feasibility studies and design projects for our federal, state, county, and private clients. With our staff of architects and engineers, MAI is uniquely positioned to respond to multiple task orders within the required time frame and schedule.

MAI has an excellent record of meeting time schedules and cost targets on all our projects. A compilation of recent project bid openings shows the difference between the estimated cost of the project and the low bid price. Our record for "on-time" design is excellent. It has always been a top priority at MAI to meet time schedules set by our clients. The fact that we have many return clients is a testimony to our performance.

We have achieved this record through the application of our project management system to all major projects. The system integrates design cost and time concerns and calls for project team decision making at key points of the design process. Our peer review, constructability review, and maintainability review at key points in the design process also play key roles in meeting time and cost targets since backtracking on the design process is probably one of the major culprits in missing time and cost targets.

As of this date _____ the foregoing is a true statement of facts.

NAME OF FIRM OR INDIVIDUAL SUBMITTING QUESTIONNAIRE	TYPE NAME AND TITLE OF PERSON SIGNING	SIGNATURE
Mitsunaga & Associates, Inc.	Lois L Mitsunaga, Chief Executive Officer / President	

NOTE: It is to a firm's advantage to maintain its experience record on a current basis. This may be accomplished by periodically forwarding current data to DAGS.

PRINCIPALS ONLY - ADDITIONAL INFORMATION

NAME Lois Mitsunaga	TITLE AND POSITION Chief Executive Officer / President	YEARS WITH FIRM 26
MAJOR RESPONSIBILITIES WITH THIS FIRM Administrative		

PRIOR EMPLOYMENT

(START WITH LATEST EMPLOYMENT PRIOR TO JOINING THIS FIRM AND PROVIDE SIMILAR INFORMATION FOR EACH SEPARATE EMPLOYMENT OR MAJOR CHANGES IN DUTIES WITH THE SAME EMPLOYER.)

FIRM: Mitsunaga & Associates, Inc.	DATE FROM:	TO:	FIRM:	DATE FROM:	TO:
	05/01/1997	04/01/1998			
ADDRESS: 747 Amana Street #216, Honolulu, Hawaii 96814			ADDRESS:		
JOB TITLE: Intern			JOB TITLE:		
SUPERVISOR'S NAME AND TITLE: Jong Namgung, PE / Senior Structural Engineer			SUPERVISOR'S NAME AND TITLE:		
MAJOR DUTIES: Engineer - in - Training			MAJOR DUTIES:		

FIRM:	DATE FROM:	TO:	FIRM:	DATE FROM:	TO:
ADDRESS:			ADDRESS:		
JOB TITLE:			JOB TITLE:		
SUPERVISOR'S NAME AND TITLE:			SUPERVISOR'S NAME AND TITLE:		
MAJOR DUTIES:			MAJOR DUTIES:		

PRINCIPALS ONLY - ADDITIONAL INFORMATION

NAME Steven D. Wong, AIA, DBIA, CMQ	TITLE AND POSITION Executive Vice President	YEARS WITH FIRM 38
MAJOR RESPONSIBILITIES WITH THIS FIRM Oversee daily operation		

PRIOR EMPLOYMENT

(START WITH LATEST EMPLOYMENT PRIOR TO JOINING THIS FIRM AND PROVIDE SIMILAR INFORMATION FOR EACH SEPARATE EMPLOYMENT OR MAJOR CHANGES IN DUTIES WITH THE SAME EMPLOYER.)

FIRM: Mitsunaga & Associates, Inc.	DATE		FIRM: Design Plus, Inc.	DATE	
	FROM:	TO:		FROM:	TO:
	1983	1995		1976	1985
ADDRESS: 747 Amana Street, Suite 216, Honolulu, Hawaii 96814			ADDRESS: 1200 College Walk, Honolulu, Hawaii 96813		
JOB TITLE: Vice President/Architecture			JOB TITLE: Vice President		
SUPERVISOR'S NAME AND TITLE: Aaron Fujii, Vice President/Chief Operating Officer			SUPERVISOR'S NAME AND TITLE: Harold Sonemura		
MAJOR DUTIES: In charge of design, production and project management of the Architectural Division			MAJOR DUTIES: In charge of design, production, contract negotiations and project management.		

FIRM:	DATE		FIRM:	DATE	
	FROM:	TO:		FROM:	TO:
ADDRESS:			ADDRESS:		
JOB TITLE:			JOB TITLE:		
SUPERVISOR'S NAME AND TITLE:			SUPERVISOR'S NAME AND TITLE:		
MAJOR DUTIES:			MAJOR DUTIES:		



CERTIFICATE OF LIABILITY INSURANCE

DATE (MM/DD/YYYY)
5/2/2023

THIS CERTIFICATE IS ISSUED AS A MATTER OF INFORMATION ONLY AND CONFERS NO RIGHTS UPON THE CERTIFICATE HOLDER. THIS CERTIFICATE DOES NOT AFFIRMATIVELY OR NEGATIVELY AMEND, EXTEND OR ALTER THE COVERAGE AFFORDED BY THE POLICIES BELOW. THIS CERTIFICATE OF INSURANCE DOES NOT CONSTITUTE A CONTRACT BETWEEN THE ISSUING INSURER(S), AUTHORIZED REPRESENTATIVE OR PRODUCER, AND THE CERTIFICATE HOLDER.

IMPORTANT: If the certificate holder is an **ADDITIONAL INSURED**, the policy(ies) must have **ADDITIONAL INSURED** provisions or be endorsed. If **SUBROGATION IS WAIVED**, subject to the terms and conditions of the policy, certain policies may require an endorsement. A statement on this certificate does not confer rights to the certificate holder in lieu of such endorsement(s).

PRODUCER Finance Insurance Ltd. 1164 Bishop Street, Suite 400 Honolulu, HI 96813	CONTACT NAME: PHONE (A/C, No, Ext): (808) 522-2040		FAX (A/C, No): (808) 522-2082
	E-MAIL ADDRESS: info@financeinsurance.com		
INSURED Mitsunaga & Associates, Inc. 747 Amana Street, Suite 216 Honolulu, HI 96814	INSURER(S) AFFORDING COVERAGE		NAIC #
	INSURER A: First Ins Co. of Hi, Ltd.		41742
	INSURER B: First Indemnity Insurance of Hawaii, Inc.		41734
	INSURER C: Admiral Insurance Company		24856
	INSURER D:		
	INSURER E:		

COVERAGES **CERTIFICATE NUMBER:** **REVISION NUMBER:**


THIS IS TO CERTIFY THAT THE POLICIES OF INSURANCE LISTED BELOW HAVE BEEN ISSUED TO THE INSURED NAMED ABOVE FOR THE POLICY PERIOD INDICATED. NOTWITHSTANDING ANY REQUIREMENT, TERM OR CONDITION OF ANY CONTRACT OR OTHER DOCUMENT WITH RESPECT TO WHICH THIS CERTIFICATE MAY BE ISSUED OR MAY PERTAIN, THE INSURANCE AFFORDED BY THE POLICIES DESCRIBED HEREIN IS SUBJECT TO ALL THE TERMS, EXCLUSIONS AND CONDITIONS OF SUCH POLICIES. LIMITS SHOWN MAY HAVE BEEN REDUCED BY PAID CLAIMS.

INSR LTR	TYPE OF INSURANCE	ADDL INSD	SUBR WVD	POLICY NUMBER	POLICY EFF (MM/DD/YYYY)	POLICY EXP (MM/DD/YYYY)	LIMITS
A	<input checked="" type="checkbox"/> COMMERCIAL GENERAL LIABILITY <input type="checkbox"/> CLAIMS-MADE <input checked="" type="checkbox"/> OCCUR GEN'L AGGREGATE LIMIT APPLIES PER: <input checked="" type="checkbox"/> POLICY <input type="checkbox"/> PRO-JECT <input type="checkbox"/> LOC <input type="checkbox"/> OTHER:			CPP1000216676-6	10/1/2022	10/1/2023	EACH OCCURRENCE \$ 1,000,000 DAMAGE TO RENTED PREMISES (Ea occurrence) \$ 100,000 MED EXP (Any one person) \$ 5,000 PERSONAL & ADV INJURY \$ 1,000,000 GENERAL AGGREGATE \$ 2,000,000 PRODUCTS - COMPIOP AGG \$ 2,000,000
A	<input checked="" type="checkbox"/> AUTOMOBILE LIABILITY <input type="checkbox"/> ANY AUTO OWNED AUTOS ONLY <input type="checkbox"/> SCHEDULED AUTOS <input type="checkbox"/> HIRED AUTOS ONLY <input type="checkbox"/> NON-OWNED AUTOS ONLY			CBA1000216698-6	10/1/2022	10/1/2023	COMBINED SINGLE LIMIT (Ea accident) \$ BODILY INJURY (Per person) \$ 1,000,000 BODILY INJURY (Per accident) \$ 1,000,000 PROPERTY DAMAGE (Per accident) \$ 1,000,000
A	<input checked="" type="checkbox"/> UMBRELLA LIAB <input checked="" type="checkbox"/> OCCUR <input type="checkbox"/> EXCESS LIAB <input type="checkbox"/> CLAIMS-MADE DED RETENTION \$			SLX1000217742-6	10/1/2022	10/1/2023	EACH OCCURRENCE \$ 5,000,000 AGGREGATE \$ 5,000,000
B	WORKERS COMPENSATION AND EMPLOYERS' LIABILITY ANY PROPRIETOR/PARTNER/EXECUTIVE OFFICER/MEMBER EXCLUDED? (Mandatory in NH) <input type="checkbox"/> Y/N If yes, describe under DESCRIPTION OF OPERATIONS below		N/A	FWC1000100899-7	10/1/2022	10/1/2023	PER STATUTE OTH-ER E.L. EACH ACCIDENT \$ 1,000,000 E.L. DISEASE - EA EMPLOYEE \$ 1,000,000 E.L. DISEASE - POLICY LIMIT \$ 1,000,000
C	Professional Liabil			EO000033558-08	5/6/2023	5/6/2024	Each Claim \$ 5,000,000
C	Professional Liabil			EO000033558-08	5/6/2023	5/6/2024	Aggregate \$ 5,000,000

DESCRIPTION OF OPERATIONS / LOCATIONS / VEHICLES (ACORD 101, Additional Remarks Schedule, may be attached if more space is required)
THIS INSURANCE CONTRACT IS ISSUED BY AN INSURER WHICH IS NOT LICENSED BY THE STATE OF HAWAII AND IS NOT SUBJECT TO ITS REGULATION OR EXAMINATION. IF THE INSURER IS FOUND INSOLVENT, CLAIMS UNDER THIS CONTRACT ARE NOT COVERED BY ANY GUARANTY FUND OF THE STATE OF HAWAII.

RISK PLACEMENT SERVICES, INC; Surplus Lines Broker License #313860
677 Ala Moana Blvd, Honolulu, HI 96813

SEE ATTACHED ACORD 101

CERTIFICATE HOLDER Mitsunaga & Associates, Inc 747 Amana Street, Suite 216 Honolulu, HI 96814	CANCELLATION SHOULD ANY OF THE ABOVE DESCRIBED POLICIES BE CANCELLED BEFORE THE EXPIRATION DATE THEREOF, NOTICE WILL BE DELIVERED IN ACCORDANCE WITH THE POLICY PROVISIONS. AUTHORIZED REPRESENTATIVE 
---	--



ADDITIONAL REMARKS SCHEDULE

AGENCY Finance Insurance Ltd.		NAMED INSURED Mitsunaga & Associates, Inc. 747 Amana Street, Suite 216 Honolulu, HI 96814	
POLICY NUMBER SEE PAGE 1			
CARRIER SEE PAGE 1	NAIC CODE SEE P 1	EFFECTIVE DATE: SEE PAGE 1	

ADDITIONAL REMARKS

THIS ADDITIONAL REMARKS FORM IS A SCHEDULE TO ACORD FORM,
 FORM NUMBER: ACORD 25 FORM TITLE: Certificate of Liability Insurance

Description of Operations/Locations/Vehicles:
 *** Proof of Insurance Only ***

THIS INSURANCE CONTRACT IS ISSUED BY AN INSURER WHICH IS NOT LICENSED BY THE STATE OF HAWAII AND IS NOT SUBJECT TO ITS REGULATION OR EXAMINATION. IF THE INSURER IS FOUND INSOLVENT, CLAIMS UNDER THIS CONTRACT ARE NOT COVERED BY ANY GUARANTY FUND OF THE STATE OF HAWAII.

RISK PLACEMENT SERVICES, INC; Surplus Lines Broker License #313860
 677 Ala Moana Blvd, Honolulu, HI 96813

License Number
AR-14062

Expiration date
4/30/2024



STATE OF HAWAII DEPARTMENT OF COMMERCE AND CONSUMER AFFAIRS

ARCHITECT

CHRISTINE T CHEUK
747 AMANA STREET SUITE 216
HONOLULU, HI 96814

SIGNATURE OF LICENSEE

License Number
AR-15481

Expiration date
4/30/2024



STATE OF HAWAII DEPARTMENT OF COMMERCE AND CONSUMER AFFAIRS

ARCHITECT

ANDREW W CHONG
3240 PINAOLA ST
HONOLULU, HI 96822



SIGNATURE OF LICENSEE

License Number
AR-4846

Expiration date
4/30/2024



STATE OF HAWAII DEPARTMENT OF COMMERCE AND CONSUMER AFFAIRS

ARCHITECT

STEVEN D WONG
3375 PAKUI ST
HONOLULU, HI 96816



SIGNATURE OF LICENSEE

License Number
PE-12144

Expiration date
4/30/2024



STATE OF HAWAII DEPARTMENT OF COMMERCE AND CONSUMER AFFAIRS

PROFESSIONAL ENGINEER

CLASS(ES): CE CIVIL

CHRISTOPHER H BALL
182 OPIHIKAO WAY
HONOLULU, HI 96825



SIGNATURE OF LICENSEE

License Number
PE-10631

Expiration date
4/30/2024



STATE OF HAWAII DEPARTMENT OF COMMERCE AND CONSUMER AFFAIRS

PROFESSIONAL ENGINEER

CLASS(ES): CE CIVIL

KYLE T G NISHIOKA
3138 HAYDEN STREET
HONOLULU, HI 96815



SIGNATURE OF LICENSEE

License Number
PE-16845

Expiration date
4/30/2024



STATE OF HAWAII DEPARTMENT OF COMMERCE AND CONSUMER AFFAIRS

PROFESSIONAL ENGINEER

CLASS(ES): CE CIVIL

SCOTT R SUZUKI
545 QUEEN STREET APT 640
HONOLULU, HI 96813



SIGNATURE OF LICENSEE

License Number
PE-19071

Expiration date
4/30/2024



STATE OF HAWAII DEPARTMENT OF COMMERCE AND CONSUMER AFFAIRS

PROFESSIONAL ENGINEER

CLASS(ES): CE CIVIL

KIMBERLY M A SEKIGUCHI
45-534 LULUKU RD
KANEHOE, HI 96744



SIGNATURE OF LICENSEE

License Number
PE-1510

Expiration date
4/30/2024



STATE OF HAWAII DEPARTMENT OF COMMERCE AND CONSUMER AFFAIRS

PROFESSIONAL ENGINEER

CLASS(ES): CE CIVIL

EDWARD C MASUOKA
46-068 ALALOA ST, #431
KANEHOE, HI 96744



SIGNATURE OF LICENSEE

License Number
PE-10071

Expiration date
4/30/2024



STATE OF HAWAII DEPARTMENT OF COMMERCE AND CONSUMER AFFAIRS

PROFESSIONAL ENGINEER

CLASS(ES): CE CIVIL

KENNETH A A SANTANA
46385 NAHEWAI STREET
KANEHOE, HI 96744



SIGNATURE OF LICENSEE