

Response to Notice to Providers of Professional Services
Fiscal Year 2024

Community Planning (Environmental Assessment)

Submitted to:
Housing and Community Development
County of Hawai'i

Submitted by:



PBR HAWAII
& ASSOCIATES, INC.

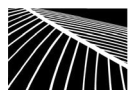
June 2023

Response to Notice to Providers of Professional Services
Fiscal Year 2024

Community Planning (Environmental Assessment)

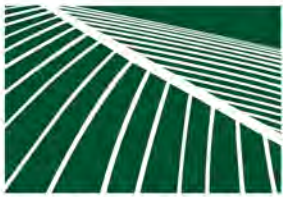
Submitted to:
Housing and Community Development
County of Hawai'i

Submitted by:



PBR HAWAII
& ASSOCIATES, INC.

June 2023



PBR HAWAII
& ASSOCIATES, INC.

June 29, 2023

Via Email: ohcd@hawaiicounty.gov

R. STAN DUNCAN, ASLA
President / Chairman

RUSSELL Y. J. CHUNG, FASLA
Executive Vice-President / Principal

VINCENT SHIGEKUNI
Senior Vice-President / Principal

GRANT T. MURAKAMI, AICP, LEED® AP BD+C
Senior Vice-President / Principal

KIMI MIKAMI YUEN, LEED® AP BD+C
Vice-President / Principal

CATIE CULLISON, AICP
Vice-President / Principal

TOM SCHNELL, AICP
Principal

RAYMOND T. HIGA, ASLA
Associate Principal

MARC SHIMATSU, ASLA
Associate Principal

DACHENG DONG, LEED® AP
Associate Principal

NATHALIE RAZO
Associate Principal

ANN MIKIKO BOUSLOG, PhD
Director of Land Economics & Real Estate

RAMSAY R. M. TAUM
Cultural Sustainability Planner

MICAH McMILLEN, ASLA, LEED® AP
Senior Associate

ETSUYO KILA
Senior Associate

GREG NAKAI
Senior Associate

NICOLE SWANSON, ASLA
Associate

BRADLEY FURUYA, AICP
Associate

THOMAS S. WITTEN, FASLA
Chairman Emeritus

W. FRANK BRANDT, FASLA
Founding Partner

1001 Bishop Street, Suite 650
Honolulu, Hawai'i 96813-3484
Tel: (808) 521-5631
Fax: (808) 523-1402
E-mail: sysadmin@pbrhawaii.com

Ms. Susan Kunz
Administrator
Housing and Community Development
County of Hawai'i
1990 Kino'ole Street, Suite 102
Hilo, Hawai'i 96720

SUBJECT: LETTER OF INTEREST FOR PROFESSIONAL COMMUNITY PLANNING (ENVIRONMENTAL ASSESSMENT) SERVICES FOR FISCAL YEAR 2024

Dear Ms. Kunz:

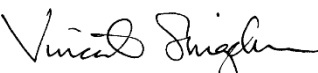
In response to the "Notice to Providers of Professional Services for FY2023," PBR HAWAII is pleased to present the attached Statement of Qualifications for the following services:

OH.4: Community Planning (Environmental Assessment)

Based on the description provided and PBR HAWAII's extensive experience in the preparation of environmental documents, including environmental assessments and environmental impact statements, we believe that our technical expertise demonstrates our capability to perform the necessary functions in a timely and cost-efficient manner.

We appreciate the opportunity to submit our qualifications and look forward to working with the County of Hawai'i, Housing and Community Development. We are confident that PBR HAWAII can provide the technical expertise necessary to satisfy your environmental planning and design related requirements.

Sincerely,


Vincent Shigekuni
Senior Vice President

Attachment

printed on recycled paper

P321798-1 LTR



Firm Background

Name of Firm or Individual, Principal Place of Business and Location of All of Its Offices

PBR HAWAII & Associates, Inc. is a multi-disciplinary firm based in Hawai'i for 53 years. We have a staff of 37 dedicated individuals, most of whom are accredited by professional organizations in their respective fields. PBR HAWAII has six licensed landscape architects, four certified planners (AICP), and five LEED® Accredited Professionals (LEED APs).

PBR HAWAII has the capabilities to provide consulting services in the following disciplines:

- **Environmental planning and entitlements**, including Hawai'i State Chapter 343, HRS and National Environmental Policy Act (NEPA) environmental assessments/environmental impact statements, and State and County permits and land use entitlements;
- **Land planning and urban design**, including master planning, GIS modeling and data development and management for geographic analysis in both rural and urban contexts for: transit-oriented mixed-use developments, educational and campus facilities, resort and residential communities, commercial and industrial facilities, parks and recreational facilities, and natural and cultural resources;
- **Regional and community planning**, including long-range regional analysis and planning, GIS modeling and graphic development, community outreach and engagement (including in-person and virtual meeting facilitation and interactive input), and sustainable design and resiliency concepts;
- **Landscape architecture**, including hardscape, irrigation, and landscape design, 3-D modeling, consultation on the use of Native Hawaiian plants, cultural landscapes, sustainable landscape design, and LEED Certification;
- **Graphic design**, including project branding, web design, interpretive displays and signage, educational material, and infographics;
- **Market, fiscal, and economic analyses**, for critical insights to market context and costs and benefits of a project in terms of local expenditures, employment and earnings for residents, and impacts to State and county government revenues and expenditures; and
- **Hawaiian cultural sustainable design concepts**, including place-based sustainable design and cultural advising, providing guidance on how to honor and incorporate Hawaiian culture into projects, and orienting clients new to Hawai'i with an introduction to Hawaiian culture.

PBR HAWAII
1001 Bishop Street, Suite 650
Honolulu, Hawai'i 96813

Tel: (808) 521-5631
Fax: (808) 523-1402
E-Mail: sysadmin@pbrhawaii.com

Environmental Studies

PBR HAWAII planners are qualified to prepare environmental reviews for development with a federal nexus.

Our staff regularly attends professional development trainings to stay abreast of National Environmental Policy Act requirements as implemented by a variety of federal agencies including the U.S. Department of Housing and Urban Development (HUD) for housing environmental reviews; U.S. Department of Agriculture for rural community infrastructure development; and the Federal Highway Administration for roadways and bridges.

Current clients include county and state agencies that are delegated federal authority such as the Department of Hawaiian Home Lands (DHHL), Hawai'i Department of Education, Hawai'i Department of Transportation, and the City and County of Honolulu.

Notable projects include an indefinite quantity contract with the DHHL to prepare Environmental Reviews for housing funded through the HUD Native American Housing Assistance and Self Determination Act; and preparation of environmental reports for water infrastructure funded through the U.S. Department of Agriculture, also for DHHL.

The Age of Firm and its Average Number of Employees over the Past Five Years

Based in Hawai'i for 53 years, PBR HAWAII's average number of employees over the past five years has been approximately 38 which breaks down into the following categories:

Principals	6 - 8
Planning Associates	4 - 5
Landscape Architect/Associate	6 - 7
Land Planners	7 - 8
Landscape Designers/Draftsmen	5 - 6
Graphic Designers	1 - 2
Business/Administration	5 - 6
Total Employees:	34 - 42

Capacity to Complete the Work in the Required Time

PBR HAWAII's staff is capable of immediate start and timely completion of projects. Our current workload projections conclude that we have well-trained and experienced staff to accomplish assignments. With our 37 employees, PBR HAWAII is one of the largest planning and landscape architectural firms in the state. PBR HAWAII has the capability and experience of responding to client demands on moment's notice. As a service business, it is our goal to maintain satisfied clients from project start to finish. Repeat clientele represents approximately 80% of our work and is evidence of PBR HAWAII's ability to provide timely service and quality products year after year.

It is our goal to respond to each assignment effectively and rapidly, while ensuring the successful implementation of project requirements. PBR HAWAII is also committed to immediate start-up on projects for Client emergencies or unexpected needs. A principal will be assigned to every project to see that project schedules are met. The process we propose consists of following administrative procedures:

1. Meet with Client and determine/identify critical project components and other logistical or coordination project needs.
2. Visit project site.
3. Evaluate the project scope, budgets, scheduling constraints/requirements and logistical considerations such as travel, work sequencing, equipment acquisition, etc.
4. Make key project assignments based on Client needs and schedule.
5. Initiate appropriate project controls, methodology to monitor progress reports, and final delivery schedules.

Tools such as Microsoft Teams, SharePoint, and Project are often helpful to develop a workflow that integrates project planning, design, and construction tasks. A PBR HAWAII project manager for a specific project would use such a tool to determine opportunities for concurrent work tasks, as well as monitor critical path tasks that affect overall project delivery. The project schedule would evolve in detail and approach and will be updated regularly. Regular team meetings provide a means to ensure assignments get accomplished in a timely manner and to anticipate and come up with solutions for new issues. Concise meeting notes will be timely disseminated to document decisions and next steps, as well as to guide accountability. A controlled-access Internet site for team members (e.g., Basecamp) is useful to share files, exchange messages, assign tasks, and manage a calendar.

PBR HAWAII has established a system for internal communication in which the project manager constantly coordinates, and reviews staff work products and relays this information to the principal-in-charge of the project. A system for critiques has been established to allow staff input and to take advantage of individual talents and experiences. Points of contact within the firm are established for coordination with consultants and with project team members. Project managers are required to keep consultants and other project team members abreast of project status through weekly or bi-weekly (depending on project requirements) coordination meetings and memorandums. Communication with other consultants is not a problem as PBR HAWAII utilizes state of the art technology and software to keep these consultants abreast on the project status. A coordination check list along with standard process charts, schedules, and timelines are established to complete projects on schedule and within budget. The related projects listed are examples of projects completed on time and on budget.

Resumes



Education, Training and Qualifications of the Individual, or if a Firm, its Key Employees

Following are the resumes of the education, training, and qualifications of the following key members of the PBR HAWAII.

Vincent Shigekuni	Senior Vice President
Grant Murakami, AICP, LEED AP® BD+C	Senior Vice President
Kimi Yuen, LEED AP® BD+C	Vice President
Catie Cullison, AICP	Vice President
Tom Schnell, AICP	Principal
Dacheng Dong, LEED AP®	Associate Principal
Nathalie Razo	Associate Principal
Ann Bouslog, PhD	Director of Land Economics & Real Estate
Ramsay Taum	Cultural Sustainability Planner
Etsuyo Kila	Senior Associate
Greg Nakai	Senior Associate
Bradley Furuya, AICP	Associate
Theresa Dean	Project Manager / Planner
Natalie Hanson, LEED AP® ID+C	Project Manager / Planner
David Simpson	Planner
Drew Barrie	Planner
Mahshid Bagheri	Physical Planner
Ty Shiramizu	Planner
Sunny Rosario	Planner
Kayla Palmer	Planner
Hailey Yessis	Planner
Sharlene Pennington	Graphic Designer

VINCENT SHIGEKUNI

SENIOR VICE PRESIDENT / PRINCIPAL

With 42 years of professional planning experience, Mr. Shigekuni has been involved with many master planning projects requiring extensive community outreach across the State. He has worked on policy plans and land use projects ranging in scale and complexity from statewide and island-wide to towns, campuses and parks. He has broad experience in community outreach and engagement, utilizing participatory techniques (such as visioning workshops, charrettes, open houses, and presentations) and tools (such as keypad polling and 3D models) to secure input and build consensus in the preparation of master plans.

Mr. Shigekuni has been involved with many site selection and land planning processes in communities across the State. He is experienced in analyzing current landholdings, analyzing and identifying physical opportunities and constraints, and providing a summary analysis for landowner decisions on the disposition and future use of properties, yielding greater values for the landowner.

Mr. Shigekuni also has extensive experience in the preparation of entitlements and environmental assessments for public and private sector clients in Hawai'i. He is involved in many of PBR HAWAII's environmental assessments (EAs) and environmental impact statements (EISs), including the O'ahu Community Correctional Center Replacement FEIS, the Hawai'i Public Housing Authority Administrative Offices Redevelopment FEIS.

Mr. Shigekuni's experience with resiliency planning includes: overseeing GIS mapping of potential HiEMA's emergency warning sirens statewide; and GIS mapping for DLNR's flood assessment study of O'ahu (Maui and Hawai'i islands to follow).



EDUCATION

Graduate Studies, 1982
University of Hawai'i at Mānoa, Department
of Urban and Regional Planning

BA in Environmental Studies, 1980
University of Hawai'i at Mānoa

PROFESSIONAL AFFILIATIONS

American Planning Association Hawai'i
Chapter

Member, Past President

Historic Hawai'i Foundation
Member

Land Use Research Foundation
Subscriber

Society of Outdoor Recreational
Professionals
Member

GRANT MURAKAMI | AICP, LEED AP® BD+C
SENIOR VICE PRESIDENT | PLANNER

Mr. Murakami has 32 years of planning experience, specializing in master planning, urban design, sustainability, and community outreach and engagement. He has been involved in a number of transit-oriented development (TOD) projects for both public and private sector clients along the Honolulu Rail Transit Project's corridor. Current and recently completed projects include a TOD Planning and Implementation study for the State of Hawai'i Office of Planning for the Island of O'ahu; TOD Planning studies for Kapolei, Waipahu, Iwilei/Kapālama, Downtown and Chinatown for the City and County of Honolulu's Department of Planning and Permitting; and a property assessment for Transit Oriented Development on Department of Hawaiian Home Lands' properties; and planning for the University of Hawai'i-West O'ahu (UHWO) Campus and University District Lands near the Keonea'e (UHWO) Rail Station. Many of these projects have included an extensive community outreach and engagement process.

Mr. Murakami is a LEED Accredited Professional and member of the American Institute of Certified Planners. He has served as President for the Hawai'i Chapter of the American Planning Association, a Director for the Hawai'i Chapter of the US Green Building Council, as the Chair of the Urban Land Institute Hawai'i's Land Use and Sustainability Committee. He has also served as a lecturer at the University of Hawai'i, Department of Urban and Regional Planning, and juror at the University of Hawai'i, School of Architecture.



EDUCATION

Master in Urban Planning, 1990
University of Washington

Certificate in Urban Design, 1990
University of Washington

Bachelor of Arts in Geography, 1986
University of Hawai'i, Mānoa

Marine Option Program Certificate, 1986
University of Hawai'i, Mānoa

Special Program - Techniques of Traditional
Town Planning, Urban Housing and Mixed-
Use Development, Campus Planning
Graduate School of Design, Harvard
University

ACCREDITATIONS

American Institute of Certified Planners

LEED AP® Building Design + Construction;
U.S. Green Building Council

**PROFESSIONAL AFFILIATIONS AND
RECOGNITIONS**

American Planning Association, Hawai'i
Chapter

Member and Past President, Vice President,
Director-at-Large

Urban Land Institute

Member, Past Sustainable Land Use
Committee Chair and Land Use and
Transportation Committee Co-Chair

US Green Building Council, Hawai'i Chapter
Board of Directors - Past Director, Past
Education Committee Member and Past Green
Schools Committee Member

KIMI MIKAMI YUEN | LEED AP® BD+C
VICE PRESIDENT | PLANNER

With over 20 years at PBR HAWAII, Ms. Yuen manages a variety of planning and design projects as well as the successful preparation of land use permits, environmental assessments and environmental impact statements. Her work includes a diverse range of regional and long-range land plans, master planned communities, public and private sector projects, community engagement and meeting facilitation, urban design, and educational facilities, and park master plans.

On Kaua‘i, Ms. Yuen worked closely with the County on the Līhu‘e Town Core Urban Design Plan, which won County Council approval in March 2010 and is the basis of a \$13 million TIGER grant awarded to the County to implement the plan. She also completed the update of the South Kaua‘i Community Plan in July 2015, which integrates long-range land use planning and transportation networks with a focus on creating sustainable, resilient communities. Her current projects include the Honolulu Harbor Master Plan, Maui Zoning Code (Title 19) Rewrite, and Waimea 400 Master Plan.

She has coordinated and led extensive community engagement efforts, testified in front of various boards, commissions, and councils, and spoken at various seminars and educational programs for The Seminar Group, Hawai‘i State Bar Association, National Association of Industrial and Office Properties (NAIOP) Hawai‘i Chapter Developing Leaders Group, the Institute of Transportation Engineers Hawai‘i Section, and The University of Hawai‘i at Mānoa Shidler College of Business. She is actively involved in several professional organizations including the American Planning Association Hawai‘i Chapter, for which she has been President, Vice President, and the APA/DURP Liaison. She is a member of the Urban Land Institute Management Committee, Lambda Alpha International Aloha Chapter Membership Chair, and a Board Member of the Hawai‘i Tourism Authority for the State of Hawai‘i for which she chaired the Strategic Plan Investigative Committee. She is also a member of the University of Hawai‘i Department of Urban and Regional Planning (DURP) Professional Council.



EDUCATION

Master in Urban and Regional Planning, 1999
University of Hawai‘i at Mānoa

BA in Architecture, with Highest Honors,
1995

University of California, Berkeley

Minor in Asian American Studies, 1995

University of California, Berkeley

ACCREDITATIONS

LEED AP® Building Design + Construction;
U.S. Green Building Council®

PROFESSIONAL AFFILIATIONS

American Planning Association
Hawai‘i Chapter President, 2015-2017,
Hawai‘i Chapter Vice President, 2011-2015
Hawai‘i Chapter APA/DURP Liaison

Lambda Alpha International-Aloha Chapter
Vice President; Past Membership Chair

Urban Land Institute Hawai‘i District Council
Management Committee

USGBC® Hawai‘i Chapter - Member, LEED
Regionalization Task Force

BOARDS & COMMISSIONS

Hawai‘i Tourism Authority
Board of Directors, 2019-2022; Ho‘okahua
Hawai‘i Standing Committee Chair
City & County of Honolulu Salary Commission,
2016-2020

AWARDS & RECOGNITIONS

UH Department of Urban and Regional
Planning Dinell Outstanding Alumni Award,
2020

Pacific Century Fellows, Class of 2016

Pacific Business News Forty under 40, Class
of 2011

SMEI & Hawai‘i Business Magazine
Distinguished Sales & Marketing Awards
Green Services, Finalist 2012

CATIE CULLISON | AICP
VICE PRESIDENT / PLANNER

At PBR HAWAII, Ms. Cullison supports public-sector clients with project management, community engagement, and environmental entitlements. Her responsibilities include preparing resource management plans, seeking ways to meaningfully consult with community, and assisting clients with documenting compliance with state and federal environmental requirements.

Her current projects include community engagement and environmental compliance documentation for the Department of Hawaiian Home Lands use of HUD-Native Hawaiian Housing Block Grant (NHHBG) funds, HRS 343 and NEPA compliance for a new roundabout Bayfront Highway in Hilo, a master plan for the Ka‘iwa Ridge Trail (Lanikai Pillbox Trail), and community engagement and environmental documentation for Honolulu’s Complete Streets program and projects in Mānoa, Kalihi, and Waikīkī as well as a supporting role on Honolulu’s Vision Zero Action Plan.

Ms. Cullison is well suited to the project due to her strong experience leading HRS 343 and NEPA environmental documentation projects and managing community engagement teams. Her approach to managing community engagement is to encourage team members’ creativity and thoughtfulness in reaching out to a wide variety of people so as to connect them in a meaningful way to the planning process.



EDUCATION

BA in Local and Urban Affairs, 1994
St. Cloud State University, Minnesota

ACCREDITATIONS

American Institute of Certified Planners,
2011

PROFESSIONAL AFFILIATIONS

American Planning Association
Member

Society of Outdoor Recreational Professionals
Member

YWCA O‘ahu
Board Secretary

TOM SCHNELL | AICP
PRINCIPAL | PLANNER

Mr. Schnell has experience in both the public and private sectors with expertise in the areas of land planning and analysis, environmental planning, and governmental permit processing and entitlements.

As Principal at PBR HAWAII, his responsibilities include the processing of land use related governmental permit documents such as Environmental Impact Statements (EIS), Environmental Assessments (EA), State Special Permit applications, State Land Use District Boundary Amendment petitions, Zone Changes, Community Plan Amendments, Special Management Area (SMA) permit applications, and Conservation District Use Applications (CDUA).

His projects include: 1) facilitating community participation, participating in master planning, and preparing and processing an EIS for the Hawai'i Community Development Authority's (HCDA) Kaka'ako Makai parks in Honolulu; 2) preparing and processing an EIS and Change of Zoning for the high-profile, "Live, Work, Play 'Aiea" project, which will be a new mixed-use community on the former Kamehameha Drive In Theater in 'Aiea; and 3) preparing a master plan and preparing an application pursuant to HRS Section 201H-38 for Makila Farms, a workforce housing community in West Maui. Some of his other past major EIS projects include: Kapalua Mauka, and Pulelehua, both of which involved State Land Use District Boundary Amendments.



EDUCATION

Master of Urban and Regional Planning, 1994
University of Hawai'i at Mānoa

Bachelor of Arts with High Honors, 1991
University of Hawai'i at Mānoa

ACCREDITATIONS

American Institute of Certified Planners, 1998

PROFESSIONAL AFFILIATIONS

American Planning Association, Hawai'i
Chapter
Member

Urban Land Institute
Member

Lambda Alpha International, Aloha Chapter
Member

DACHENG DONG | LEED® AP

ASSOCIATE PRINCIPAL / PLANNER/GIS ANALYST

As an Associate Principal at PBR HAWAII, Mr. Dong participates on a diverse range of land use planning and urban design projects. His architectural design background gives him various physical planning and site design skills that contribute to all levels of planning projects. In addition, his sketch and rendering skills are a unique addition to the planning and design team. His experience with ESRI GIS, including ArcMap, ArcGIS 3D analysis, ArcGIS Spatial Analyst, aids the multi-disciplinary team in preparation of maps, land use analysis, and planning document. Mr. Dong's experience of working on a wide range of projects and his ability to integrate a variety of components into cohesive, forward-thinking planning projects makes him a valuable member of any project team.

His experiences include preparing University of Hawai'i West O'ahu university village urban design plan, developing the Lāna'i City expansion and the 201H housing project master plan; conducting GIS analysis and mapping for the O'ahu Flood Vulnerability Study and exploring the site development capacity for several urban parcels via the zoning code study and site planning exercise.



EDUCATION

Master in Urban and Regional Planning,
2004

University of Hawai'i at Mānoa

Bachelor of Architecture, 1999

Beijing Polytechnic University

ACCREDITATION

LEED® Accredited Professional; U.S. Green
Building Council

PROFESSIONAL AFFILIATIONS

American Planning Association, Hawai'i
Chapter
Member

NATHALIE RAZO

ASSOCIATE PRINCIPAL | PLANNER

At PBR HAWAII, Ms. Razo has managed and assisted a variety of projects ranging from state and federal environmental assessments, to site selection and land capacity assessments, and from land use master plans to infrastructure analysis. She specializes in master planning, site planning, and community engagement and facilitation. Ms. Razo's current projects include a State of Hawai'i TOD Planning and Implementation study for the Island of O'ahu, City Department of Transportation Services Complete Streets studies and community engagement; campus master plans for the University of Hawai'i West O'ahu, Hawai'i Community College, Kaua'i Community College, and Kapi'olani Community College; a property assessment for Transit Oriented Development on Department of Hawaiian Home Lands' properties; and housing feasibility studies and ongoing community engagement for the City and County.

Prior projects she has worked on include community outreach and engagement for the Hawai'i Public Housing Authority Mayor Wright Homes redevelopment project and City and County of Honolulu Transit Oriented Development action plans; property analysis and assessments for various Queen Emma Land Company properties and the East Kapolei High School for the Department of Education; and, environmental assessments for the Kalihi-Pālama Health Center (343 and NEPA), Niu Valley Middle School classroom facilities, and Haihai Fire Station.

Prior to joining PBR HAWAII, her graduate work at the University of Hawai'i focused on community planning with an emphasis in community and building resilience addressing social vulnerabilities, hazard response and recovery policies, and the value of incorporating community capacity building. During her graduate studies, she undertook extensive work with the Kailapa Homestead Community in organizing community meetings, developing a visioning document and creating an initial programming/spatial analysis for a proposed community center as well as working with the Catholic Diocese to assess their existing food ministry programs and its strengths, weaknesses and opportunities for creating sustainable programming.

Ms. Razo also worked at the National Disaster Preparedness Training Center, where she assisted in the development of the FEMA certified PER-306 HURRIPLAN Resilient Building Design for Coastal Communities training course for hurricane preparedness, mitigation strategies, and disaster recovery.



EDUCATION

Master in Urban and Regional Planning,
Resiliency Planning, 2013
University of Hawai'i at Mānoa

Certificate in Disaster Management and
Humanitarian Assistance, 2013
University of Hawai'i at Mānoa

Public Policy and Administration Graduate
Program, 2011
Northwestern University

Bachelor of Arts in Architecture, 2009
Yale University

FEMA Certified Natural Disaster Awareness
for Community Leaders Training (AWR-
310)

National Disaster Preparedness Training
Center (NDPTC)

FEMA Certified Community Resilience
Training (AWR-228)

National Disaster Preparedness Training
Center (NDPTC)

PROFESSIONAL AFFILIATIONS

American Planning Association

Director at Large; Membership and
Emerging Planner Chair

Urban Land Institute
Young Leader

ANN MIKIKO BOUSLOG | PHD
DIRECTOR OF LAND ECONOMICS & REAL ESTATE

Dr. Bouslog has over 30 years of experience in market assessment, economic and fiscal impact analysis, entitlement, and strategic planning for large or complex developments throughout Hawai‘i and around the Pacific.

As Project Director at PBR HAWAII since 2015, Dr. Bouslog has led multiple efforts to support affordable housing initiatives throughout the state, preparing market studies, economic and fiscal impact assessments, 201H applications, infrastructure and other development impediment analyses, and support of rezoning or Interim Planned Development-Transit (IPD-T) permits on O‘ahu. Her practice areas also span infrastructure finance, market and economic aspects of TOD and regional initiatives on O‘ahu; business planning for community and conservation-oriented facilities; resort and visitor industry consultation. Recent and ongoing Hawai‘i island projects have addressed Office of Housing & Community Development’s Kamakoa Nui Master Planned Community, Kamoleao Community Center, Kea‘au Town Center, Waimea Town, Waikoloa Beach Resort, and Mauna Kea Resort.

Prior to joining PBR HAWAII, Dr. Bouslog served as Forest City Hawaii’s development manager for the \$770 million Kamakana Villages, a 2,200-home master planned community in partnership with the State of Hawai‘i, Housing Finance and Development Corporation. At Forest City, she also supported entitlement initiatives for a 19-megawatt solar farm in Kunia, O‘ahu.

Prior professional ventures include founding and operating Mikiko Corporation, a real estate and economic advisory firm, and serving as Director of KPMG’s Hawai‘i Real Estate and Hospitality Consulting practice. In these capacities, Dr. Bouslog directed services for prominent government, resort, and community developments such as the U.S. Navy (Ford Island and bulk dispositions), U.S. Army (Residential Communities Initiative), Department of Hawaiian Home Lands, Koa Ridge, Mauna Lani Resort, Waikoloa Beach Resort, Hualālai, Kukui‘ula, Kō‘ele and Mānele, Hilton Hawaiian Village and Ho‘opili, as well as projects in Japan, South Korea, Malaysia, Saipan, Guam, and Palau. In 2013-14, she helped organize a 10+ party mediation to address a proposed critical habitat designation in West Hawai‘i, resulting in beneficial agreements between area landowners and the U.S. Fish and Wildlife Service.

Dr. Bouslog has acted as expert witness numerous times, before State and County agencies as well as in Circuit Court. In April 2016, her testimony before the Hawai‘i State Land Use Commission regarding Koa Ridge was cited in the Hawai‘i Supreme Court decision that upheld the project’s LUC redistricting.



EDUCATION

Ph.D. in Demography/Sociology, 1985
Cornell University

MA in Sociology with minor in City &
Regional Planning, 1981
Cornell University

BA in Urban Studies, 1977
Stanford University

PROFESSIONAL AFFILIATIONS

Rate Commission, City and County of
Honolulu
Commissioner

Lambda Alpha International, Aloha Chapter
Board Member; Former President, Aloha
Chapter; Former Asia/Pacific Regional Vice
President; Former Western U.S. Assistant
Vice President

East-West Center Foundation
Former Board Member

Community Housing Fund at Hawai‘i
Community Foundation
Former Director

Urban Land Institute, Hawai‘i Chapter
Former UrbanPlan Chair & Mgt. Committee

Kamehameha Schools’ for-profit
subsidiaries including Bishop Holdings
Corporation, Kamehameha Investment
Corporation, KUKUI, Inc. and Pauahi
Management Corporation
Former Director on each entity

RAMSAY R. M. TAUM

CULTURAL SUSTAINABILITY PLANNER

Ramsay R. M. Taum is a Cultural Sustainability Planner at PBR HAWAII. His eclectic background and experience in business, government and community service make him a valuable asset in both public and private sectors as well as in for-profit and non-profit business.

Mentored and trained by respected kūpuna (elders), he is a practitioner and instructor of several Native Hawaiian practices including ho‘oponopono (stress release and mediation), lomi haha (body alignment) and Kaihewalu Lua (Hawaiian combat/battle art). His work in promoting sustainable place based, and Hawaiian cultural stewardship principles and practices is acknowledged locally, nationally, and internationally. Mr. Taum is a recognized cultural resource and sought after as a keynote speaker, lecturer, trainer and facilitator. Trained by respected Hawaiian elders, he effectively integrates place based, cultural based, indigenous and Native Hawaiian cultural values and principles into contemporary business.

Ramsay was awarded the 2013 Peace Day Hawai‘i, Peace Maker of the Year in recognition of his lifetime career advocating the spirit of Aloha around the world, in fields of ecology, business, communications, economic development and Hawaiian culture. His work in promoting sustainable place based, and Hawaiian cultural stewardship principles and practices is acknowledged locally, nationally and internationally. Ramsay was awarded the 2008 East West Center’s Leadership Certificate Program’s Transformational Leadership in Sustainability, and in that same year was Hawai‘i Home + Remodeling, HONOLULU & Hawai‘i Business magazines’ “Who’s Keeping Hawai‘i Green” 2008 Individual Educator Honoree.



EDUCATION

Undergraduate Studies, 1980
United States Air Force Academy

Bachelor of Science in Public
Administration, 1981
University of Southern California

PROFESSIONAL AFFILIATIONS

Pacific Risk Management ‘Ohana - IKE
(Indigenous Knowledge & the Environment)
Hui - Steersperson

Indigenous Peoples Climate Change
Working Group - Member/Facilitator

Global Breadfruit Heritage Council -
Advisor

Olohana Foundation, focused on building
community capacity and cohesiveness
around systems of food, energy, and
knowledge - Advisor (Present)

Sustain Hawai‘i - Vice President

Royal Order of Kamehameha, Hawai‘i
Chapter - Member

National Disaster Preparedness Training
Center - Subject Matter Expert

NCAR/UCAR Rising Voices Climate
Resilience through Indigenous and Earth
Sciences - Member/Facilitator

E Ola Pono, LLC - Managing Member

ETSUYO KILA

SENIOR ASSOCIATE / GIS ANALYST

As a Senior Associate at PBR HAWAII, Ms. Kila participates on a diverse range of regional planning projects and land planning studies. Her planning and cartographic skills provides a valuable contribution to all levels of planning projects. In particular, her experience with GIS, including ArcGIS, aids the multi-disciplinary team in preparation of maps and planning documents. Current projects include support to the flood vulnerability assessment for Department of Land and Natural Resources (O'ahu completed, Maui and Hawai'i islands to start in last quarter of 2018) and GIS data development for Department of Hawaiian Home Lands land inventory and license inventory. Past projects of note include: the Statewide Inventory of Stream Channel Alterations for the Commission on Water Resource Management; and the State Civil Defense Emergency Warning Sirens Inventory.



EDUCATION

Master in Urban and Regional Planning,
2005

University of Hawai'i at Mānoa

BA in International Relations, 1995

Kobe City University of Foreign Studies

GREG NAKAI

SENIOR ASSOCIATE | PLANNER

Greg Nakai is involved in many types of planning projects with an emphasis on environmental planning and land use entitlements. He has managed or assisted with a wide range of projects, including an environmental impact statement (EIS) and Chapter 201H, HRS exemptions for the proposed Hawai‘i Public Housing Authority (HPHA) School Street Senior Affordable Housing Development, a mixed-use development featuring up to 800 affordable rental apartments for seniors; Chapter 201H, HRS exemptions for the Kūhiō Park Terrace Low-Rises and Kūhiō Homes Redevelopment, a development featuring 650 affordable rental and public housing apartments; Chapter 201H, HRS exemptions for Keahumoa Place, an affordable housing development in East Kapolei; an environmental assessment (EA) and Special Management Area Use Permit (SMP) for the Wai‘anae High School Girls’ Athletic Locker Room; an EA and SMP for the Ted Makalena Golf Course National Pollutant Discharge Elimination System (NPDES) Improvements; EAs for the Board of Water Supply Hālau Wai Mānoa, the Sand Island Business Association, and new classroom facilities at Waipahu High School and Kealakehe Elementary School. As project manager, he helped to obtain a SMP, Zoning Waiver Permit, and Conditional Use Permit for Joint Development for the Sand Island Wastewater Treatment Plant Secondary Treatment Improvements. He has also assisted with obtaining a Minor Modification to a Plan Review Use (PRU) Permit for the Mixed-Use Housing Project at the University of Hawai‘i at Mānoa Campus, as well as various land use entitlements for church facilities and university campuses on O‘ahu and Maui.

Mr. Nakai transitioned from a career in language education, and received his master’s degree in Urban and Regional Planning at the University of Hawai‘i at Mānoa, with a focus on issues of equitable and sustainable food systems policy and planning.



EDUCATION

Master in Urban and Regional Planning, 2018
University of Hawai‘i at Mānoa

MA in Second Language Studies, 2007
University of Hawai‘i at Mānoa

BA in International Studies, 1998
University of Washington

BS in Psychology, 1998
University of Washington

PROFESSIONAL AFFILIATIONS

American Planning Association Hawai‘i
Chapter
Programs Committee Co-Chair and Executive
Committee Member

BRADLEY FURUYA | AICP
ASSOCIATE / PLANNER

Mr. Furuya grew up on O‘ahu before moving to Los Angeles to attend school at the University of Southern California. During his studies, Bradley discovered urban planning while taking an environmental studies elective course. He graduated with a Bachelor of Science in Public Policy, Management, and Planning and subsequently received a Master of Planning degree, also from the University of Southern California.

Prior to joining PBR HAWAII, Mr. Furuya worked as a Planner for the City of Los Angeles Department of City Planning where he processed land use entitlements and Environmental Impact Reports as required under the California Environmental Quality Act. Most recently, Bradley supervised the Department of City Planning’s Historic Preservation Overlay Zone (HPOZ) unit, which included the City’s 35 historic districts and 22 HPOZ boards.

For Bradley, one of the great joys of being a planner is the ability to work with people of a community to shape the built environment in a way that brings positive change to their everyday lives. When presented with the opportunity to work with the people of Hawai‘i, Bradley moved home to pursue his passion of creating healthy places that are designed for everyone.

At PBR HAWAII, Bradley assists in writing environmental assessments (EAs), Chapter 201H, HRS exemptions, Special Management Area Use Permit (SMP) applications, Hawai‘i Community Development Authority (HCDA) Development Permit applications, and Master Plan reports for various residential, commercial, and institutional projects throughout the islands.



EDUCATION

Master of Planning, Economic Development, 2014
University of Southern California

BS in Public Policy, Management, and Planning, Urban Planning, 2013
University of Southern California

ACCREDITATIONS

American Institute of Certified Planners, 2019

PROFESSIONAL AFFILIATIONS

American Planning Association
Member

Historic Hawai‘i Foundation
Member

THERESA DEAN

PROJECT MANAGER / PLANNER

Ms. Dean has several years of consulting and agency experience with environmental, housing, and infrastructure planning projects. Her background includes the development of outdoor resource management plans, environmental assessments, and other permit and entitlement documents. She has experience in agency contracting processes and affordable housing developments. To date, her work focuses on community engagement methods that inform planning efforts across the State. Currently, she is working on a variety of projects including an environmental assessment and accompanying management plan for the DLNR Ka'iwa Ridge Trail, the City and County of Honolulu's update to the Wai'anae Sustainable Communities Plan, and as an engagement advisor on the O'ahu Vision Zero Action Plan.



EDUCATION

Master in Urban and Regional Planning,
Environmental Planning, 2017
University of Hawai'i at Mānoa

BS in Business Administration and
Management, 2010
Syracuse University – Martin J. Whitman
School of Management



NATALIE HANSON | LEED® AP ID+C PROJECT MANAGER / PLANNER

At PBR HAWAII, Ms. Hanson's responsibilities include preparation of environmental assessments and special district permits for government projects, GIS mapping and analysis, community engagement through website content management and web-based outreach tools (such as MailChimp, StoryMaps and SurveyMonkey), and preparation of federal and state environmental documents including documentation of compliance with the National Environmental Protection Act (NEPA).

Her recent projects include community engagement and environmental compliance documentation for the Department of Hawaiian Home Lands use of HUD-Native Hawaiian Housing Block Grant (NHHBG) funds, and community engagement for the City and County of Honolulu's Complete Streets, Pedestrian Plan, and Ala Pono an Ala Wai Crossing. Current projects include updating the Ocean Resource Management Plan with the Office of Planning, preparing flood map reports for the Department of Land and Natural Resources, updating the City and County of Honolulu's TOD website, and land use, community planning, and preparation of NEPA environmental reports for the Department of Hawaiian Home Lands. While earning her Master's in Urban and Regional Planning at the University of Hawai'i, Ms. Hanson re-designed the department's website and social media platforms, assisted in the launch of the department's first alumni association, and received funding from the J. Watumull Scholarship for conducting field research on sea level rise adaptation in Kolkata, India.

Ms. Hanson also brings to her role as planner a bachelor's degree in sociology, anthropology, and Asian studies; both quantitative and qualitative data collection and analytical skills; and seven years of experience work-study throughout Asia. This background has fostered a firm grounding in the importance of inclusion when conducting community outreach as part of planning processes and decision making.



EDUCATION

Master in Urban and Regional Planning,
2016

University of Hawai'i at Mānoa

Graduate Certificate in Disaster
Management and Humanitarian Assistance,
2016

University of Hawai'i at Mānoa

BA in Sociology/Anthropology, Asian
Studies, 2007

St. Olaf College, Northfield MN

Native Hawaiian Organizations in the
Section 106 Process

Seminar co-hosted by Historic Hawai'i
Foundation, The Advisory Council on
Historic Preservation, and the U.S.

Department of the Interior Office of Native
Hawaiian Relations

Foundations in Environmental Review:
NEPA and 24 CFR Part 58 Environmental
Review Procedures – Technical Assistance
Workshop hosted by Department of
Hawaiian Home Lands and U.S. Department
of Housing and Urban Development

ACCREDITATIONS

LEED® AP Interior Design + Construction
U.S. Green Building Council

PROFESSIONAL AFFILIATIONS

American Planning Association
Hawai'i Chapter
Member

Lambda Alpha National Collegiate Honors
Society for Anthropology

DURP Ohana

University Students of Urban and Regional
Planning

DAVE SIMPSON PLANNER

At PBR HAWAII, Mr. Simpson works in a supportive role on various projects to assist principals and associates in the firm. In his previous role, Mr. Simpson served as the coordinator for the Smart Sustainable Communities initiative for Hawai'i Green Growth. His responsibilities included primary coordination, research, logistics, and technical support for the Smart Sustainable Communities (SSC) Roundtable and corresponding working groups.

Dave's experience in this role involved engagement with a diverse array of key leaders, partner organizations, and technical experts to achieve SSC objectives that promote joint action, accountability, collaboration, information exchange, resource leverage and consensus building. The project deliverables included managing a multi-sector process to develop recommendations on targets, indicators and metrics for the Aloha+ Challenge Smart Sustainable Communities 2030 statewide goal. Membership among the working groups managed in this process included state and county representatives, locally-based private sector companies, academic and technical experts, and community-based organizations. Additional project deliverables involved development of the Smart Sustainable Communities Business Roundtable as a private sector platform for collaboration on joint actions to support sustainability initiatives. Dave's experience also includes a background in hospitality management on the Island of Lāna'i and grass-roots political advocacy.



EDUCATION

Master of Urban and Regional Planning,
2016

University of Hawai'i at Mānoa

Bachelor of Arts – Political Science &
History, 2004

Emory University

Emory British Studies Program, 2002
Oxford University, University College

DREW BARRIE

PLANNER

Mr. Barrie is experienced in land planning and urban design, supporting development projects through the entitlement and permitting processes, developing long-range planning and policy documents, and collaborating with stakeholders and professionals in various disciplines. His diverse background in public and private planning, land use consulting, architecture, and landscape architecture is a valuable asset to the wide range of planning and design projects he supports.

Mr. Barrie's goal is to leverage creative problem-solving, sensitive planning, and quality design to create meaningful environmental, urban, and community impact.



EDUCATION

Master of Urban Planning, Design of the
Built Environment, 2022
University of Southern California

Bachelor of Science in Geodesign,
Architecture Minor, 2022
University of Southern California

MAHSHID BAGHERI

PHYSICAL PLANNER

Mahshid holds a master's degree in Urban and Regional Planning. Her motivation is to be part of creating a sustainable planet through effective participatory processes and cross-sector collaboration. She brings experience in urban designing, physical planning, and mapping.

During her studies, Ms. Bagheri worked as a graduate research assistant in National Disaster Preparedness Training Center (NDPTC) and focused on disaster management and humanitarian assistance planning. Through this period, she was part of a wide variety of projects; She assisted in a GIS analysis project to investigate the impact of flight restriction relaxation on the number of COVID cases on the Island of Oahu in Spring 2020. She also helped with the preparation of COVID-19 contact tracing and social distancing surveys, and GIS analysis of the obtained data.

During her studies, Mahshid also contributed to conducting a research project for the State of Hawai'i Department of Land and Natural Resources – Division of Boating and Ocean Recreation (DOBOR) with the purpose of creating a conceptual development plan to guide the potential future development of the Ala Wai Small Boat Harbor. In this project she helped with conducting a site inventory and site analysis, conducting community and stakeholders' engagement surveys and interviews, and assessing prior stakeholder engagement results. She also developed resilient design guidelines including several strategies for addressing sea level rise and flooding in the Ala Wai Small Boat Harbor.

Some other projects that Mahshid assisted with are: 1) developing an infrastructure plan for Waipahu TOD area by analyzing various infrastructure considerations including multi-modal transportation, parking, stormwater and green infrastructure, 2) finding links between demography and resource dependency on Merizo residents' attitudes and perceptions towards coastal and marine resources in the Achang Reef Flat Marin Preserve, Guam by analyzing a survey data employing IBM SPSS Software, and 3) a SPSS analysis of a survey conducted one year after 2017 earthquake in middle east to investigate the relationship between people's awareness about their significant role in response and recovery activities after one year of a disaster, and the improvement of their quality of life in the post-disaster process.



EDUCATION

Master of Urban and Regional Planning,
2021
University of Hawai'i at Mānoa

Bachelor of Architecture Engineering, 2018
Iran University of Science and Technology

Bachelor of Physics, Atomic and Molecular
Physics, 2009
Shahid Beheshiti University

PROFESSIONAL AFFILIATIONS

American Planning Association
Member

TY SHIRAMIZU PLANNER

Mr. Shiramizu has an invested interest and experience in nurturing and guiding Hawai'i's future through sustainable policies and practices. He believes that diligence and integrity in planning are crucial to proactively and positively influencing the communities of Hawai'i.

As a Legislative Aide, Mr. Shiramizu gained experience with the legislative process which included researching, drafting and reviewing potential bills for legislation, as well as reviewing and familiarizing himself with active legislation. Attending Transit Oriented Development (TOD) and other planning meetings helped familiarize him with the goals and requirements of good planning, and he worked closely with stakeholders, constituents, and legislators and their staff to identify and address the various issues that Hawai'i faces.

His position as Clean Transportation Intern with Blue Planet Foundation gave him experience with non-profit work, advocacy and storytelling, and furthered his knowledge of the local transportation field. His previous education in biology and economics puts him in a unique position to identify Hawai'i's important natural resources while understanding the implications of our economy at large.



EDUCATION

Master's in Urban and Regional Planning,
2022

University of Hawai'i at Mānoa

BA in Biology, Minor in Economics, 2016
University of Hawai'i at Mānoa

SUNNY ROSARIO PLANNER

Ms. Rosario's work experience in a variety of fields combined with her educational background in environmental science and public affairs gives her a diverse approach to planning. With an understanding of environmental compliance, history, law, finance, and more she brings numerous perspectives to her work.

Planning sits at the intersection of her goals to help people and the planet. This is reflected in her senior thesis which studied the impacts of environmental messaging in media on viewers. Product placements, character actions, and word choice used in assorted media were studied for influence on viewers. Ms. Rosario's research skills and work experience in environmental compliance help her to prepare for all stages of the planning process.



EDUCATION

BS in Environmental Science, Minor in
Environmental Science Systems and Society
| Public Affairs | History, 2020
University of California, Los Angeles

PROFESSIONAL AFFILIATIONS

NAIOP Developing Leaders
Member

KAYLA PALMER

PLANNER

Ms. Palmer joined PBR HAWAII in 2023 and graduated from the University of Hawai‘i at Mānoa with her master’s in Urban and Regional Planning and Bachelor of Science in Global Environmental Science. During her master’s degree, she focused on preparing a framework for transportation departments to operationalize social vulnerability indicators in climate adaptation decision making.

Prior to joining PBR HAWAII, Ms. Palmer was a Highways Climate Adaptation AmeriCorps Vista for the Hawai‘i Department of Transportation-Highways (HDOT) and Hawai‘i State Climate Commission. In this position, Ms. Palmer was able to provide data collection and project evaluation to HDOT-Highways & Google when developing a statewide climate and social vulnerability mapping tool to enhance project prioritization for underserved communities and vulnerable State highway facilities.

At PBR HAWAII, Ms. Palmer will provide support on a variety of projects such as the O‘ahu Vision Zero Action Plan, 2050 O‘ahu Regional Transportation Plan, new roundabout at Hilo Bayfront highway, and the replacement of Waiahole Bridge.



EDUCATION

Master of Social Science, Urban & Regional Planning, 2023

University of Hawai‘i at Mānoa

Bachelor of Science, Global Environmental Science, 2021

University of Hawai‘i at Mānoa

HAILEY YESSIS

PLANNER

Ms. Yessis has experience supporting her team on the enhancement and development of housing and environmental projects as her efforts includes preparing environmental compliance documents, developing long-range planning and policy documents, and collaborating with stakeholders and professionals in various disciplines. Through planning, her goal is to create a supported community and a sustainable environment for future generations to come through her knowledge and background in natural resource management, conservation, and land use in Hawai'i.

She is currently assisting in providing NEPA compliance documents for projects pertaining to the Department of Hawaiian Home Lands to better support the Hawaiian Home Lands communities by ensuring a safe and healthy housing environment, while simultaneously protecting wildlife and plants native or endemic to Hawai'i. She is also assisting with research and correspondence for a team collaboration on the DLNR Ka'iwa Ridge Trail master plan.

Ms. Yessis is able to bring her strong teamwork skills, persistence to overcome challenges, and passion for protecting the environment and the community she has called home all her life through the work of ethical planning to the table.



EDUCATION

Bachelor of Science in Natural Resources & Environmental Management, 2023
University of Hawai'i at Mānoa

PROFESSIONAL AFFILIATIONS

Alpha Gamma Delta
Vice President of Recruitment, Alumni Chapter

College of Tropical Agriculture and Human Resources Student Ambassador, College of Tropical Agriculture and Human Resources Alumni Association

SHARLENE PENNINGTON

GRAPHIC DESIGNER

With five years of graphic design and digital illustration experience, Ms. Pennington is passionate about creating visually stunning designs that help brands grow. With years of hands-on graphic design experience, Ms. Pennington developed the ability to make meaningful and strategic decisions in professional contexts, curate and develop brand identities, and formulate dynamic, effective and successful designs while building her professional portfolio. Ms. Pennington's specialized areas include logo and brand identity, website design, editorial design, minimalist icon graphics, and presentation graphics.

At PBR HAWAII she employs her skills in the production of architectural illustrations and renderings, graphic planning-based reports, and displays for physical and online presentation materials. Recent and ongoing projects include design work for One Hotel Hanalei, He'eia National Estuarine Research Reserve System, and Samuel Mahelona Hospital.

Before joining PBR HAWAII, Ms. Pennington was a graphic designer for MoDo Hawaii where she maintained the brand identity by managing and creating content for the brand from packaging design, social media management, merchandise design, photography, to marketing collateral. She also worked as a freelance graphic and web designer in Los Angeles and Honolulu and has worked on a few website designs and brand identity projects for clients.

Ms. Pennington's vast internship experiences within the New Media Arts Program and years of graphic design experience as a freelancer and in-house head graphic designer complements her background in the graphic design field. Her work as a graphic designer and freelancer entailed working closely with companies and design studios such as Nella Media Group, 1013 Integrated, Urban Pacific Communications, Hawaii Pacific Photo and Pepperblack Studios.



EDUCATION

AS in Interface Design, 2018
Kapi'olani Community College, New Media
Arts Program



Client References

***Names and Phone Numbers of up to
Five Clients Who May Be Contacted, Including Two for Whom Services
Were Rendered During the Preceding Year***

Alan Carpenter
Department of Land and Natural Resources
Division of State Parks
Phone: (808) 587-0286

John Leong
Kupu
Phone: (808) 735-1221

Rochelle Nagata-Wu
WRNS Studio
Phone: (808) 356-5882

Barry Usugawa
Board of Water Supply
Phone: (808) 748-5900

Peter Vincent
Peter Vincent Architects
Phone: (808) 524-8255



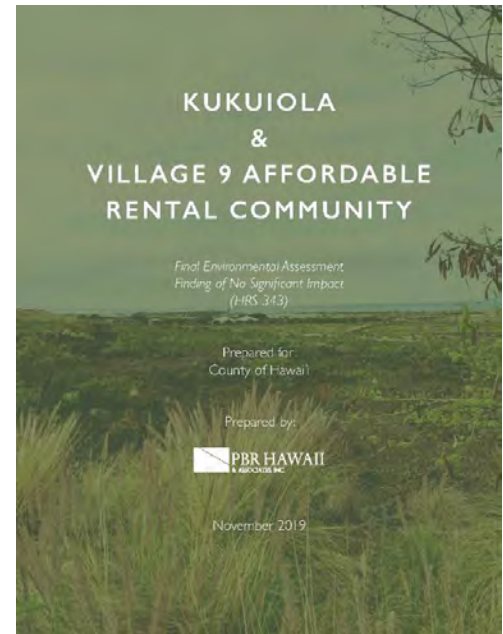
Relevant Project Experience

Relevant Projects

Over the years, PBR HAWAII has been fortunate to have provided our services to federal agencies, State of Hawai'i agencies, county agencies on all islands, and most large land owners and developers throughout the state. The following projects provide an example of our diverse planning experience.

La'iŌpua Villages - Village 9 Master Plan & Environmental Assessment (Kukuiola and Village 9 Affordable Rental Community), Hawai'i

PBR HAWAII completed master plans and prepared and processed an Final EA/FONSI for the proposed La'iŌpua Villages - Village 9 project, which consists of two subprojects: 1) County of Hawai'i Kukuiola homeless emergency shelters and permanent supportive housing; and 2) a Hawai'i Housing Finance and Development Corporation affordable rental housing complex. The project site (approximately 36 acres) is at the corner of Kealakehe Parkway and Ane Keohokālole Highway in West Hawai'i.



Nakahili - A Workforce Family Agricultural Community 201H Housing Project, Hawai'i

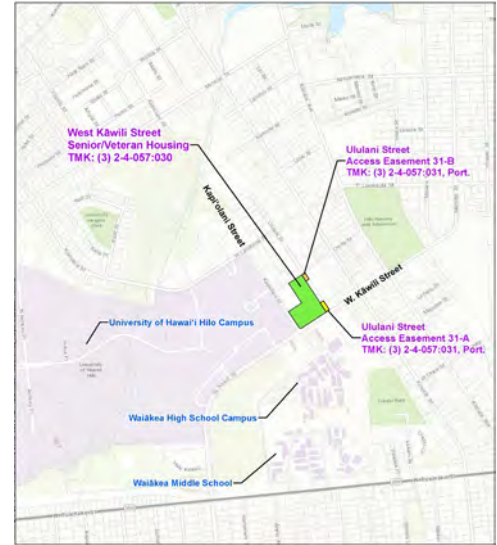
Brown Development LLC contracted PBR HAWAII to provide land use planning and entitlement services for an approximately 1,560-acre property in the South Kohala District of Hawai'i near the intersection of Māmalahoa Highway with Waikoloa Road. As proposed, Nakahili is a workforce family agricultural community that includes farm dwellings on agricultural lots and allows for agricultural operations. The plan also provides a small neighborhood agricultural community core, with uses such as an agricultural processing center, farmer's market, and farm-to-table restaurant. Since a majority of the proposed dwelling units (more than 50%) will be affordable units, the project is proposed to be processed under Chapter 201H, Hawai'i Revised Status. As part of the process, PBR HAWAII prepared Draft Environmental Assessment (EA), and will be preparing a Final EA and 201H application when the project moves forward.

West Kāwili Street, Hilo Senior/Veteran Housing NEPA, Hawai'i

PBR HAWAII prepared environmental documentation consistent with the National Environmental Protection Act (NEPA) for EAH Housing's West Kāwili Street Senior/Veteran Housing project which is proposed on an undeveloped lot at the corner of West Kāwili Street and Kapi'olani Street in Hilo.

The project will serve households with incomes at or below 30-80% Average Median Income (AMI), with preference given to veterans and spouses of deceased veterans. The County of Hawai'i has set aside project-based vouchers by the United States Department of Housing and Urban Development (HUD) for qualifying residential households at or below 50% Area Median Income (AMI).

Because HUD funds will be used, the project is considered a federal undertaking, necessitating environmental documentation under NEPA and related authorities such as defined by Section 106 of the National Historic Preservation Act (NHPA) and Section 7 of the Endangered Species Act.



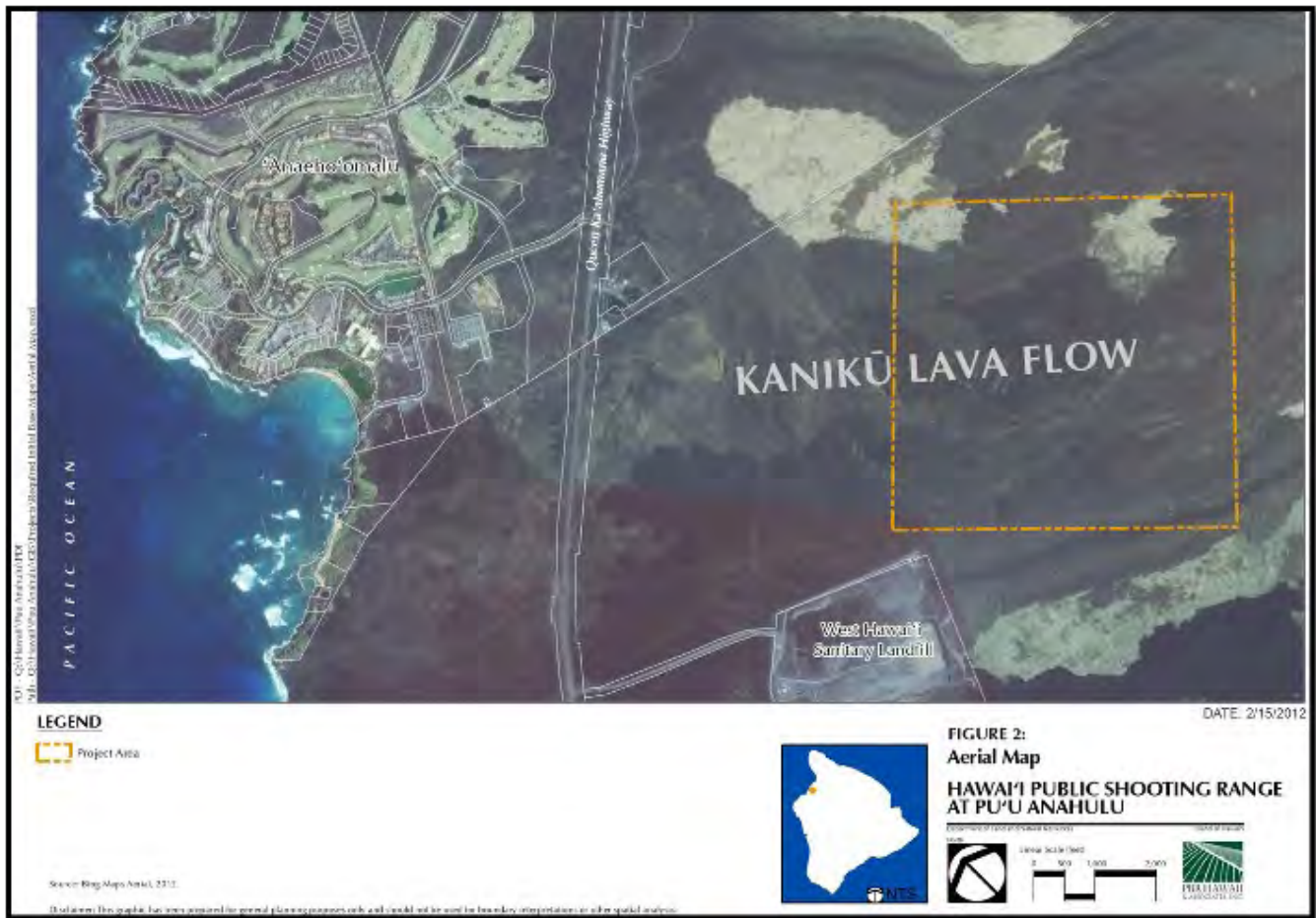
Kamoleao Master Plan and Environmental Assessment, Hawai'i

PBR HAWAII was contracted by DHHL to prepare a master plan and coordinate preliminary engineering services to support the design, entitlements, and construction of a mixed-use project within a portion of DHHL's land in Pana'ewa (commonly referred to as "Kamoleao"). After preparation of the master plan PBR HAWAII successfully processed a Final EA/FONSI. The planning process engaged beneficiaries and stakeholders through outreach meetings, an online survey, and "soft sound" talk story sessions. Previous plans had been prepared for Kamoleao since the 1980s. The plans prepared by PBR HAWAII sought to build upon previous plans and further investigate sustainable strategies – environmental, social, and financial sustainability – with a phase 1 plan that is implementable within the next few years.



Hawai'i Public Shooting Range at Pu'u Anahulu, Hawai'i

A legal and safe public shooting range has long been sought on Hawai'i Island. For the Hawai'i Public Shooting Range at Pu'u Anahulu, PBR HAWAII prepared a master plan and an environmental assessment to support the eventual construction of public rifle, pistol, skeet, trap, and sporting clays ranges that conform to safety requirements and are consistent with and meet the niches for recreational hunting and shooting sports. The master plan and environmental assessment were developed through a process of agency and community engagement, site assessment, and design. The approach builds upon the community's and State's previous 20 years' work to develop a public shooting range.



Hilo International Airport and Kona International Airport ARFF (Aircraft Rescue and Fire Fighting) Station Improvements, Hawai'i

For the Hilo and Kona International Airports Aircraft Rescue and Firefighting (ARFF) station improvements, PBR HAWAII prepared the environmental compliance documents including: 1) a Categorical Exclusion to meet National Environmental Protection Act (NEPA) requirements; and 2) a Declaration of Exemption to meet Hawai'i Revised Statutes Chapter 343 requirements. PBR HAWAII also streamlined the permitting requirements for the Kona ARFF and complied with the Coastal Zone Management Act requirements.

Pāhoa Park Expansion Master Plan and Environmental Assessment, Hawai'i

The Pāhoa Park Expansion Master Plan is a proposed expansion of an existing County park. The master plan site consists of 71.121 acres. The eastern quarter of this area is currently developed with park and community facilities including an aquatic center, ball fields, a basketball court, a skate park, a Community Center, and a Senior Center.

The purpose of this Pāhoa Park Expansion Master Plan is to: 1) provide improved and more diverse athletic and recreational opportunities to Pāhoa Town and the entire Puna District; 2) remedy the existing drainage problems often present at the park; and 3) provide an orderly build out of the park with appropriate pedestrian and vehicular circulation, and adequate infrastructure to support the master plan build out.

This master plan implements a course of action of the General Plan to “maximize the use of the Pāhoa Neighborhood Facility site to serve the recreational needs of the lower Puna area.” The General Plan also recognizes that “cool and rainy weather requires that there be extensive covered and indoor recreational areas.” This master plan also implements an action proposed by the Puna Community Development Plan to expand the existing park and create a regional park.

PBR HAWAII also assisted the County with preparing and processing an environmental assessment for the Pāhoa Park Expansion Master Plan pursuant to Chapter 343, Hawai'i Revised Statutes to support the proposed expansion.



COUNTY OF HAWAII
DEPARTMENT OF PARKS & RECREATION
PAHOA PARK MASTER PLAN, JOB NO. PR-4159

CONCEPTUAL DESIGN
APRIL 2013



WCITARCHITECTURE

CONCEPTUAL MASTER PLAN

0 100 200 300 FT Figure 1

Kealakehe Elementary New Classroom Building, Hawai'i

PBR HAWAII prepared and successfully processed a HRS Chapter 343 Final EA/FONSI for a new classroom building at Kealakehe Elementary School (KES) in Kailua-Kona. The KES new classroom building will include six general classrooms, one special education (SPED) self-contained classroom, one itinerant room, one art/science classroom, one faculty center, one conference room, and one custodial room.



Figure 2
Aerial Location Map
Kealakehe Elementary School
New Classroom Building

Island of Hawai'i



DATE: 11/5/2015

Source: Pictometry Online (2012). Landsat 7 (ETM) imagery (1999-2003). ESRI Online Basemap.
Disclaimer: This graphic has been prepared for general planning purposes only and should not be used for boundary interpretations or other spatial analysis.

Kamehameha Schools Waimea Preschool Environmental Assessment, Hawai'i

PBR HAWAII prepared an environmental assessment for Kamehameha Schools Waimea Preschool which received a finding of no significant impact (FONSI) for the use of lands owned by the State of Hawai'i Department of Hawaiian Home Lands (DHHL).

The two acre parcel is located at Pu'ukapu, Waimea (also known as Kamuela) in South Kōhala, Hawai'i, about 1/2 mile east of Waimea town center. The Waimea Preschool fulfills, in part, the overall Kamehameha Schools' mission to increase the opportunity for early education for families. The facility allows the Preschool program to serve 80 Waimea-area 3- and 4-year old children to benefit from the programs offered.

Haihai Fire Station, Hawai'i

PBR HAWAII prepared an environmental assessment with a finding of no significant impact (FONSI) for the development of the Haihai Fire Station, a new fire station near the Hilo Municipal Golf Course Driving Range.

The new fire station will replace the existing fire station located on Kawailani Street and provide additional space required for Emergency Medical Services since the Fire Department has outgrown their existing location. The planned widening of Kawailani Street together with the expanded services provided by the fire station triggered a search for alternative solutions. The new facilities will allow appropriate accommodation of required personnel, vehicles, and equipment for continued operation of the Emergency Medical Services. Since the project will use State land and County funds, the environmental assessment complied with State environmental requirements.



Kā'ū Gym and Shelter, Hawai'i

PBR HAWAII completed an environmental assessment (EA) with a finding of no significant impact (FONSI) for a new gym that will also serve as a hurricane and vog shelter at Kā'ū High and Pāhala Elementary School in Pāhala, Hawai'i. The EA helped to clarify and resolve capacity questions related to district shelter needs. The EA also dealt with issues related to: views, parking, event traffic, and compatibility with historic buildings. The EA had to be fast-tracked to meet a very tight project deadline so that construction funding would not lapse.



County of Hawai'i Mass Transit Agency Baseyard and Maintenance Facility in Hilo

PBR HAWAII successfully completed the preparation and processing of an environmental assessment for the County of Hawai'i Mass Transit Agency (MTA) Baseyard and Maintenance Facility in Hilo. The MTA provides island-wide public transportation for the County of Hawai'i, administrative support to the Hawai'i County Transportation Commission, and oversees taxicab operators. Currently, it is located on Railroad Avenue in the Schultz Siding facility where it shares limited space with the Department of Public Works. The proposed base yard and maintenance facility is necessary because the MTA has grown significantly over the years and needs its own facility to improve efficiency and the work environment.

The site plan of the proposed Base Yard and Maintenance Facility includes construction of a 26,500 square foot building with 19,500 square feet of warehouse space for transit vehicle maintenance, washing, and repair. The building will also include office space for administrative staff who oversee daily transit operations as well as storage space.



Lālāmilo Well A Improvements, Hawai'i

PBR HAWAII prepared and processed an environmental assessment resulting in a finding of no significant impact for improvements to the County of Hawai'i, Department of Water Supply's (DWS) Lālāmilo Well A, located South Kohala District of the island of Hawai'i. Improvements will include the upsizing of its pump, piping, and related facilities to enhance productivity.

University of Hawai'i at Hilo College of Pharmacy, Hawai'i

In 2008, the University of Hawai'i at Hilo (UHH) approved a final environmental assessment (EA) for the then proposed interim UHH College of Pharmacy Facilities, with a finding of no significant impact (FONSI). Since then, all four of the proposed modular buildings have been installed. Subsequently, UHH was able to secure funding for permanent facilities on the adjoining land to the north and is proposing to construct its permanent College of Pharmacy facilities. The permanent College of Pharmacy facilities will be approximately 120,000 square feet and built in multiple phases on land totaling 4.5 acres. The existing modular buildings shall continue to remain operational after the proposed permanent buildings are completed.

Since the proposed permanent College of Pharmacy facilities will involve the use of State lands and funds, it triggered the need for the preparation of an EA in compliance with Chapter 343, HRS. PBR HAWAII completed the second EA, which was approved with a FONSI in July 2011. PBR HAWAII is also the landscape architect for the project.



Department of Hawaiian Home Lands, Preparation of HUD Environmental Review Records Pursuant to 24 CFR §58

The Department of Hawaiian Home Lands contracted PBR HAWAII to prepare their environmental policy compliance documents for non-exempt projects receiving HUD Native American Housing Assistance and Self Determination Act (NAHASDA) funding. The proposed projects are located throughout the state and on various locations within each island. The project types include single family residential rehabilitation or new construction; parcel subdivisions; subdivision infrastructure development; and community facilities. Environmental documentation prepared by PBR HAWAII includes: categorical exclusions; environmental review record re-evaluations; National Environmental Policy Act (NEPA) and Chapter 343, Hawai'i Revised Statutes (HRS) environmental assessments; and 8-step analyses for projects that may be in floodplains or wetlands.

8-Step Wetlands Analysis for Compliance with 24 CFR Part 55, Floodplain Management and Protection of Wetlands, East Kapolei I Subdivision and Detention Pond, O'ahu



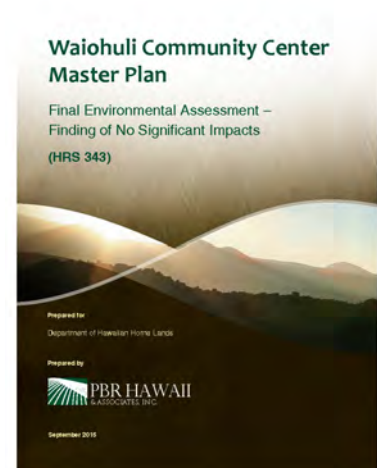
PBR HAWAII coordinated an alternatives analysis on behalf of the Department of Hawaiian Home Lands for the East Kapolei I Subdivision.

The proposed project site contains a relict stream channel, designated on National Wetland Inventory as a wetland. Securing Federal HUD funds required assessing the site and examining development alternatives utilizing an 8-Step process defined by 24 CFR Part 55.

The work conducted by PBR HAWAII included: 1) compiling a record of agency/applicant correspondence and biological assessments that pre-dated the project; 2) coordinating a new wetland assessment (performed by a biologist); and 3) interfacing with the US Fish and Wildlife Service to confirm that no habitat was present. The assembled body of work was then incorporated into an analysis document that was made available for public review pursuant to Federal publication requirements.

Waiohuli Community Center Master Plan and FEA/FONSI, Maui

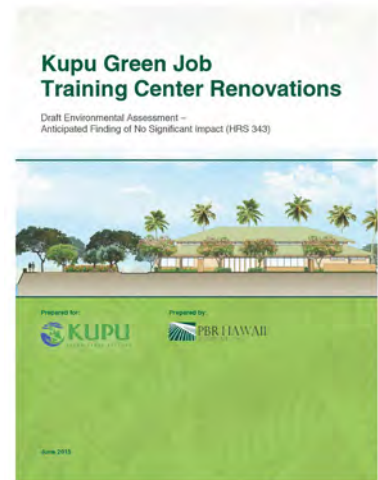
PBR HAWAII, in partnership with WCIT Architecture, supported the Department of Hawaiian Home Lands and the Waiohuli Hawaiian Homesteaders Association, Inc. to complete master planning and environmental documentation for a kitchen house, hale, community center, gardens, athletic field, and archaeological site to foster community gathering, cultural education, recreation, and economic capacity building. Environmental documentation included both NEPA and HRS 343 to allow for use of both federal and state funds.



Kupu Green Job Training Center, O'ahu

PBR HAWAII provided planning services to Kupu, a nonprofit organization that provides training and leadership opportunities to Hawai'i's youth. Kupu transformed the Kewalo Basin "Net Shed Building" into the "Kupu Green Job Training Center" to provide better facilities for the youth in its programs. As part of its work with Kupu, PBR HAWAII prepared and processed an environmental assessment and assisted Kupu with other permitting needs.

Renovations to the Net Shed Building included: 1) enclosing the building with walls, windows, and doors; 2) interior changes to provide classrooms, gathering spaces, offices, improved restrooms, and a commercial kitchen; 3) improvements to the surrounding grounds including landscaping, a reduction in paved surfaces, and low impact development features such as a rain garden.

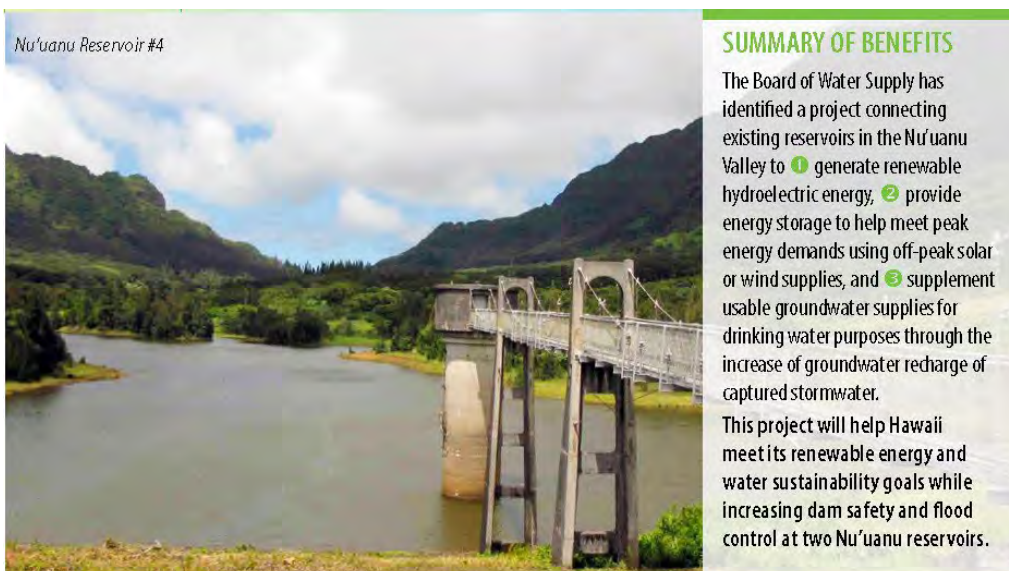


The renovations are critical in multiplying and expanding the impact of Kupu's programs statewide while also creating synergistic opportunities for the community to use the Center.

Board of Water Supply Nu'uaniu Reservoir Hydroelectric and Managed Aquifer Recharge Project, O'ahu

PBR HAWAII is assisting prime consultant CDM Smith with the Board of Water Supply Nu'uaniu Reservoir Hydroelectric and Managed Aquifer Recharge Project. This project involves connecting reservoirs in the Nu'uaniu Valley to: 1) generate renewable hydroelectric energy; 2) provide energy storage to help meet peak energy demands; and 3) supplement groundwater supplies through the increase of groundwater recharge of captured stormwater. The project will: 1) help Hawai'i meet renewable energy and water sustainability goals; and 2) increase dam safety and flood control at two Nu'uaniu reservoirs.

As a sub-subconsultant to CDM Smith, PBR HAWAII's role includes: 1) agency and public outreach, including public meetings; 2) coordination and management of subconsultants conducting archeological, biological, and traffic management studies; and 3) preparing and processing an environmental assessment in compliance with Chapter 343, Hawai'i Revised Statutes (HRS).



Ka'iwa Ridge (Lanikai Pillbox) Trail Improvements, Management Plan, Environmental Assessment, and Conservation District Use Permit Project, O'ahu

PBR HAWAII is assisting the DLNR, Division of Forestry and Wildlife Na Ala Hele Trails Program with a plan to make improvements to the Ka'iwa Ridge Trail (Lanikai Pillbox Trail).

The project involves developing a plan for physical improvements of the Ka'iwa Ridge Trail that reduces erosion and provides an improved hiker experience. The goal is to provide safer conditions while developing a management plan for the trail that: 1) upholds the right of public access to mauka lands; 2) is compliant with HRS Chapter 198D and HAR Title 13, Chapter 130; and 3) lays the groundwork for reduced community conflict.

Project tasks include: 1) better defining the legal trail corridor and trail management responsibilities; 2) a survey of existing natural and cultural resources; 3) identifying the points of community conflict; and 4) developing a plan for physical improvements and management.

PBR HAWAII is responsible for community engagement, trail drawings, and a comprehensive management plan. PBR HAWAII is working with a civil engineer/hydrologist to develop a physical plan for the trail that addresses chronic erosion. PBR HAWAII will also prepare an Environmental Assessment and Conservation District Use Application to ready the project for future design and construction.

STORMWATER & EROSION CONTROL



SUBMIT FEEDBACK HERE



LINK TO MORE INFO HERE

Trail Rerouting: The trail corridor is limited to the loftside legal easement granted by EO 3601 and by a neighboring easement along the Bluestone Condominium development. Efforts to re-route portions of the trail have begun with the cooperation between the State of Hawai'i and the adjacent private property owners. These efforts have allowed for the improved implementation of the physical improvement options described below.

Recommended Water Management:



Water Bars: Commonly used on steeply sloped trails, water bars are essentially a channel angled across a trail to divert water runoff. Water bars should extend at least a foot from each side of a trail and should drain to rocks and vegetation to diffuse the energy of moving water and absorb runoff while filtering sediment.



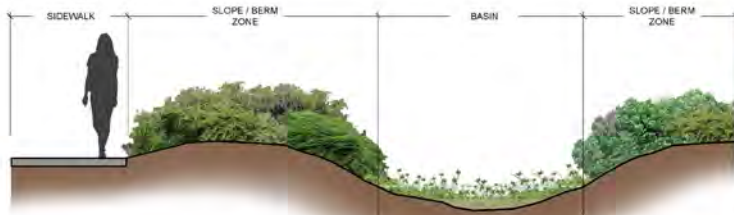
Coir Logs: Coir logs are biodegradable rolls that consist of a thick mesh of coconut coir surrounded by an outer coir netting. This method is an environmentally friendly erosion control method that creates a natural control area and can establish vegetative growth.



Retaining Walls: Retaining walls are used in trail building to provide strength to edges and to support slopes. For erosion control purposes, they can be used to reduce or steep slopes. Construction is typically rock or logs. Drainage behind the wall is critical to ensure the structure is not undermined.



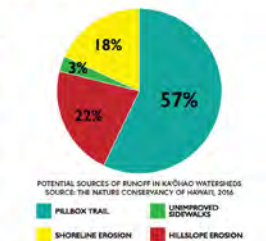
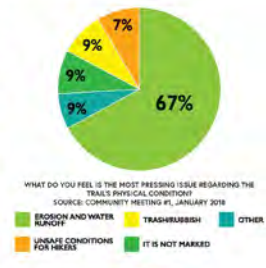
Existing Conditions



Bioswales: Depressions cut into the earth (swales) can be used to convey water, often in conjunction with berms. They may be used in conjunction with water bars to accept flow of stormwater or on their own as the ground contour allows. Like water bars, swales should outlet to appropriate grade, rocks, and vegetation to slow the movement of water and filter sediment. Swales can be planted to further dissipate water energy and sediment. Vegetated buffers can be further contoured and planted to help mimic natural processes for stormwater conveyance and bio-filtration of pollutants.

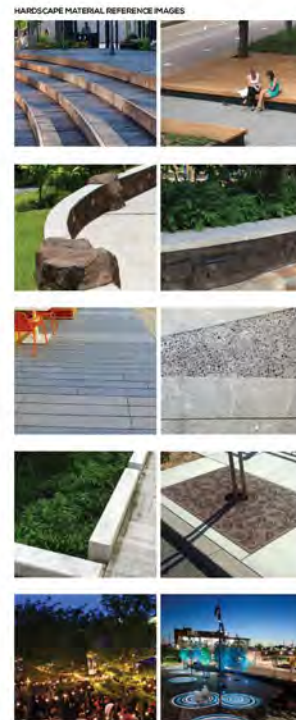


Vegetated Stabilization: Areas prone to erosion can be seeded or planted with vegetation and mulch. Examples of seeded stabilization are often seen alongside roadways or highway interchanges upon completion of construction. Vegetated stabilization is useful in areas where permanent vegetative cover is desired. Vegetated stabilization, if seed, should be native mix and covered with a mulch so as to keep seed in place and to protect it from the drying effects of wind and sun. If out-plantings are used for soil stabilization, care should be taken to exclude invasive alien species with a preference for native plants.



Wailuku Civic Complex Master Plan and Environmental Assessment, Maui

PBR HAWAII was part of the Ferraro Choi team that worked with the Maui County Planning Department on the Wailuku Civic Complex Master Plan and Environmental Assessment (EA). Building on the County’s earlier reWailuku efforts, PBR HAWAII spearheaded the public outreach and created the reWailuku website that was updated with information related to the Civic Complex and other County projects in Wailuku. PBR HAWAII also designed the outdoor spaces at the Civic Complex including improved pedestrian connections, streetscape improvements on Vineyard and Church Streets, and a new plaza that will be the pu’uwai, or heart, of Wailuku Town. PBR HAWAII also successfully completed the EA/FONSI to support the project.



ENLARGED ILLUSTRATIVE SITE PLAN
Main Features



Kekaulike Street Multi-Modal Improvements, Environmental Assessment and Special District Permit, O’ahu

HDR, Inc contracted with PBR HAWAII. to assist the City and County of Honolulu, Department of Transportation Services (DTS) with the preparation of a HRS Chapter 343 Environmental Assessment and a Special District permit for proposed multimodal street improvements to Kekaulike Mall and Street in Honolulu, Hawai’i. The project addresses the need for spatial continuity and connectivity between Kekaulike Mall, Kekaulike Street, and the eventual Chinatown rail station. A “shared-use street” concept has been designed that aims to improve pedestrian accessibility, safety, connectivity, and wayfinding while promoting economic activity and enhancing the experience of residents and visitors in Chinatown.



Liliha Civic Center Master Plan & Iwilei Infrastructure Master Plan, O’ahu

PBR HAWAII is providing master planning services for the Liliha Civic Center and greater Iwilei area. The plan will provide space for State programs and affordable housing and support walkable Transit-Oriented Development (TOD) communities in the Iwilei area. As part of the planning process PBR HAWAII completed market studies for affordable housing at the site, and together with its subconsultants, is identifying infrastructure improvements needed to support future development. The master plan for the Liliha Civic Center site may include up to 600 housing units, offices for State workers, ground-level commercial/retail, outdoor space, and connection to the future HART rail station. This unique site also features two historic O’ahu Railway and Land Company buildings. PBR HAWAII is also preparing and processing a programmatic EIS to support the master planning efforts.



Kilauea Recovery Voluntary Housing Buy Out Program, “Tiered” NEPA EA, Hawai’i

PBR HAWAII is supporting the County of Hawai’i in deploying federal funds through the US Housing and Urban Development Community Development Block Grant Disaster Relief program by preparing a “Tiered” Environmental Assessment compliant with the National Environmental Policy Act (NEPA). The work involves: 1) defining a large area of Puna as the project area; 2) preparing a Tier 1 Environmental Assessment, and 3) developing procedures and forms for the County’s use in evaluating individual properties that enter into the Voluntary Housing Buy-Out Program. Project tasks include GIS mapping of USGS geothermal data; coordination with the team archaeologist to develop a procedural programmatic agreement with the State Historic Preservation Officer, coordinating a public informational meeting describing the “Tiered” Environmental Assessment process.

NEPA Process Description – Environmental Review

- Includes review for potential impacts to:
 - Historic and cultural resources (National Historic Preservation Act)
 - Endangered Species and their habitat (Endangered Species Act)
 - Wetlands and Floodplains
 - Toxics and Hazardous Waste, Explosives
 - Farmland Resources
 - Noise
 - Airport Hazards
 - Local land use ordinances
 - etc.



Wai'anae High School – Girls' Athletic Locker Room, O'ahu

The proposed Wai'anae High School Girls' Athletic Locker Room (GALR) building will include a locker room, toilet area, shower room, storage, laundry room, coach's office, and other support spaces, as well as replacement administrative office space, landscaping, and the extension/widening of a fire access road. This is a legislative add-on project needed to comply with Title IX gender equity requirements, per federal and state laws. The intent of this Project is to provide a gender equitable, or better, GALR to the existing Boys' Athletic Locker Room. For this project, PBR HAWAII prepared a Hawai'i Revised Statutes (HRS) Chapter 343 Environmental Assessment (EA), as well as a Special Management Area (SMA) Use Permit application, which was approved and adopted by resolution by the Honolulu City Council in November 2022.



Honokōwai Master Plan, Maui

PBR HAWAII prepared and processed an Environmental Assessment (EA) for the Department of Hawaiian Home Lands' (DHHL) Honokōwai Master Plan, a proposed agricultural community of 777 acres in Honokōwai, West Maui.

As envisioned by DHHL, and uses in the Master Plan Area will include agricultural homesteads (subsistence and supplemental agriculture); residential homesteads (single-family and multi-family); community uses including agriculture, park, and commercial areas; conservation areas; industrial uses; roadways; and lands set aside to accommodate HDOT and County infrastructure.

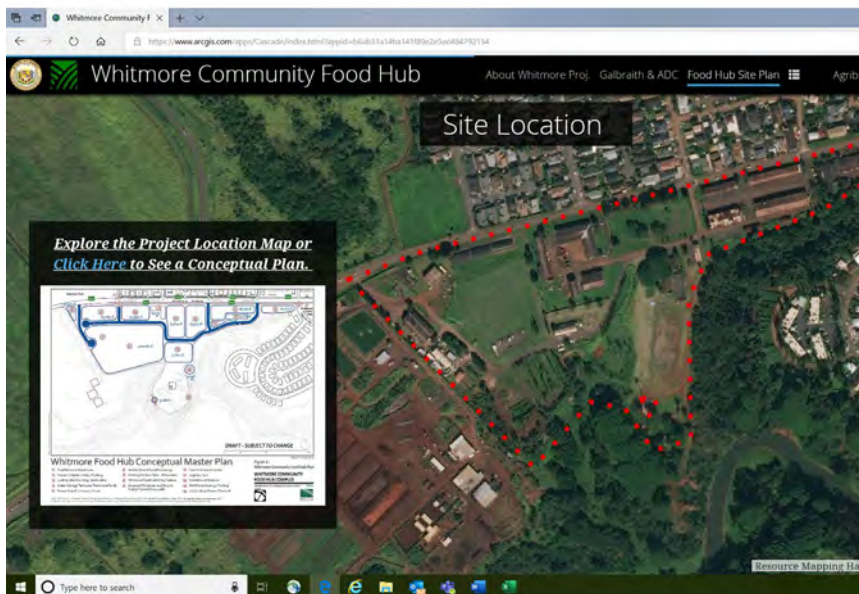


Whitmore Community Food Hub, O'ahu

With the decline of the sugar and pineapple industries on O'ahu, large agricultural farmsteads struggled to remain sustainable. The Galbraith Estate, which encompassed 1,723 acres north of Wahiawā, was one such impacted property. In 2004, their lessee Del Monte harvested their last crop on the property and subsequently the estate dissolved in 2007. As a result, local residents lost jobs, active farmlands became fallow, and the local economy suffered.

To prevent potential residential development of agricultural lands, the State of Hawai'i Department of Agriculture, Agribusiness Development Corporation (ADC) acquired approximately 1,207 acres of the estate in 2008. Recognizing the need to modernize existing processing facilities to further support small scale farmers, the ADC worked with community members and organizations to envision the Whitmore Food Hub. The project is a part of the overall strategic goals of ADC to revitalize agricultural production, boost the economy, and support small scale farmers.

In addition to preparing an environmental assessment for this project, PBR HAWAII used ArcGIS StoryMap to produce the Whitmore Food Hub webpage.



DHHL Kēōkea Master Plan and EA, Maui

The DHHL Kēōkea Homesteads are located in the Kula Moku on the Island of Maui and are the only farm lot type homesteads of its kind on the island. PBR HAWAII was contracted by DHHL to assist the Kēōkea Homestead Farm Lot Association (KHFLA) to develop a community driven Master Plan with associated environmental assessment entitlements based on previously approved KHFLA vision plan documents. In addition to previous efforts, site surveys and a current outreach effort to the KHFLA homestead community was also a part of the Master Plan project scope.



The phased, multi-year Master Plan is intended to be a manifestation of the Homestead community's vision for their future to support the economic, social, health and cultural well-being

of native Hawaiians in the Kēōkea Homestead community and neighboring communities. Potential facilities and uses include a cultural education center, native food and medicinal plant gardens, keiki and kupuna daycare, a multipurpose meeting building, local small business facilities and food venues, restoration of a native plant forest, and a farmers co-op with produce processing plant.

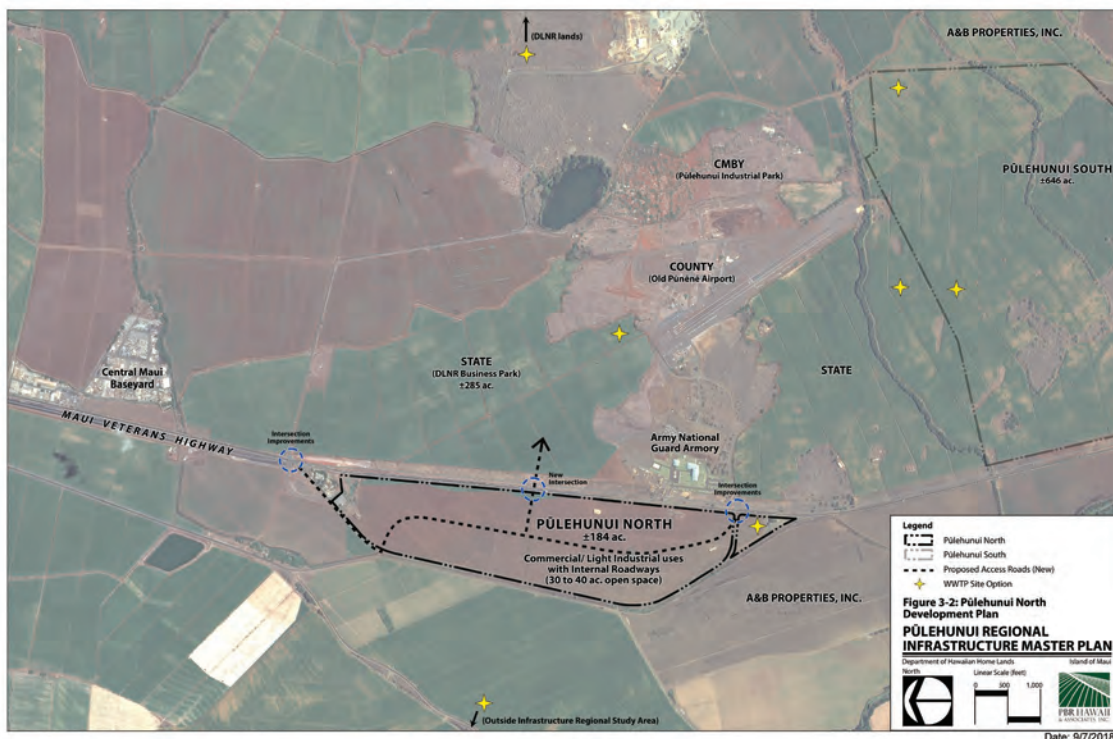
Pūlehuui Master Plan Development, Maui

PBR HAWAII prepared and processed an Environmental Impact Statement (EIS) for the Pūlehuui Master Plan Development, a project area of over 1,150 acres in Pūlehuui, Central Maui managed by four State agencies.

For this project, the Department of Hawaiian Home Lands (DHHL) partnered with the Department of Land and Natural Resources (DLNR), the Department of Public Safety (PSD), and the Department of Accounting and General Resources (DAGS) to undertake a cooperative effort in land use planning, fiscal coordination, and infrastructure planning for the Pūlehuui Regional Infrastructure Master Plan.

PBR HAWAII assisted DHHL, the lead agency, by coordinating an infrastructure master plan for the four State agency stakeholders. As part of this effort, PBR HAWAII also evaluated market outlooks and prepared an economic and fiscal assessment of all plan components, with respect to direct, indirect and induced impacts for the County of Maui and the State of Hawai'i. Components were evaluated individually and by agency, and included: 1) commercial/light industrial uses (DHHL); 2) agricultural uses (DHHL); 3) commercial/light industrial and public/quasi-public uses (DLNR); and 4) the proposed Maui Regional Public Safety Complex (PSD/DAGS).

Besides the delivery of water for irrigation and drinking, one of the biggest issues the project faces was how to collect, treat and dispose of wastewater. A total of nine wastewater system alternatives were addressed in the FEIS. Seven of the alternatives included a new Wastewater Reclamation Facility, but at different locations within the region. At the time the FEIS was published, an alternative was not selected. Thus, the impacts of each alternative were addressed in a programmatic way.



Halewilikō Highlands Environmental Compliance & 201H, O'ahu

EAH Housing contracted PBR HAWAII to lead the preparation and submittal of an application for exemptions under Chapter 201H, HRS for Halewilikō Highlands in 'Aiea. As part of the application process PBR HAWAII also coordinated with the City's Department of Land Management and Department of Planning and Permitting to demonstrate compliance with Chapter 343, Hawai'i Revised Statutes.

Halewilikō Highlands will be an affordable senior rental facility consisting of 140 independent-living units (139 affordable units, and one staff (manager) residence), a kupuna wellness facility, and supporting uses such as parking. All residences will be affordable rentals. Halewilikō Highlands will be on an approximately 3.5 acre vacant parcel (Tax Map Key (TMK) (1) 9-9-078:006) at 99-385 Pōhai Place, 'Aiea, Hawai'i. In December 2020 the City and County of Honolulu Council adopted a resolution to allow Halewilikō Highlands to proceed and EAH Housing is now moving forward with construction.

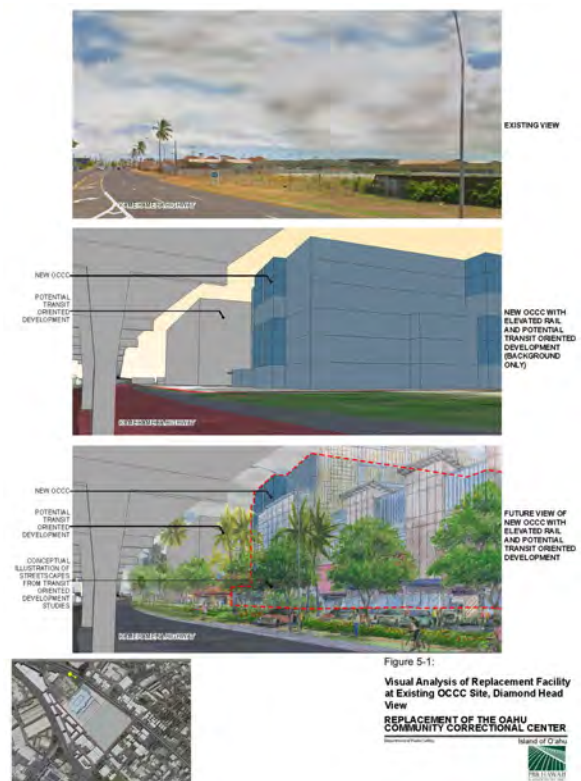


O'ahu Community Correctional Center Relocation and Expansion EIS, O'ahu

PBR HAWAII prepared and processed an environmental impact statement (EIS) for the replacement of the O'ahu Community Correctional Center (OCCC). In addition to the replacement of the OCCC facility, the EIS evaluates environmental impacts associated with outcomes of the preferred alternative including the expansion of the Women's Community Correctional Center in Kailua and development of a new Department of Agriculture Animal Quarantine Station.

For this project PBR HAWAII's services include:

- Environmental analysis as required under HRS, Chapter 343, which resulted in an accepted Final EIS;
- Visual analysis for all four OCCC replacement alternative sites;
- Consultation for land-use entitlements;
- Community meetings;
- Preparation and processing of a Plan Review Use application, which the City and County of Honolulu Council approved in February 2020; and
- On-going coordination for implementation.



Kapa'a Elementary School Library Use Permit, Kaua'i

The State Department of Education (DOE) built a new library facility on the existing Kapa'a Elementary School campus on Kaua'i.

The single-story library is approximately 7,390 gross square feet. The new library is sustainably designed and constructed to promote human and environmental health and incorporates a mix of interior spaces to enhance learning opportunities for current and future elementary school students. Interior spaces include: reading and study areas, book storage areas, student conference areas, a computer lab, staff office space, restrooms, maintenance areas, and storage. The new library is connected to the existing school campus areas by a system of sidewalks and covered walkways. Landscaping is provided along the perimeter of the new building.

PBR HAWAII successfully completed a HRS Chapter 343 Final Environmental Assessment as a Finding of No Significant Impact in 2007 and was successful in securing the Use Permit in 2014.



Kapalua Coastal Trail, Maui

PBR HAWAII prepared an environmental assessment, a Special Management Area permit application, a Shoreline Setback Determination application, and a Conservation District Use Application for the Kapalua Coastal Trail. When complete the Kapalua Coastal Trail will run 3.5 miles from the Kapalua Resort to Honolua Bay. Trail users will be rewarded with dramatic vistas of the shoreline, neighboring islands, and resort features, as well as exposure to important aspects of Hawaiian culture, geology, and plant and animal life.

In 2007 the American Planning Association Hawai'i Chapter recognized the Kapalua Coastal Trail with an award for outstanding environmental planning and preservation.



Board of Water Supply Hālau Wai Mānoa (Mānoa Learning Center) HRS 343 EA, O'ahu

The Honolulu Board of Water Supply (BWS) is exploring the possibility of creating a place-based, hands-on learning area to promote the goals of forest restoration, watershed protection, water conservation, and sustainable agriculture.

The BWS Hālau Wai Mānoa would provide an alternative outdoor learning facility for members of the public to learn about watersheds, forest health and watershed protection, water conservation, and sustainable resource management practices. Also, from this location, BWS would provide community volunteer opportunities/workdays for watershed restoration and sustainable agriculture.

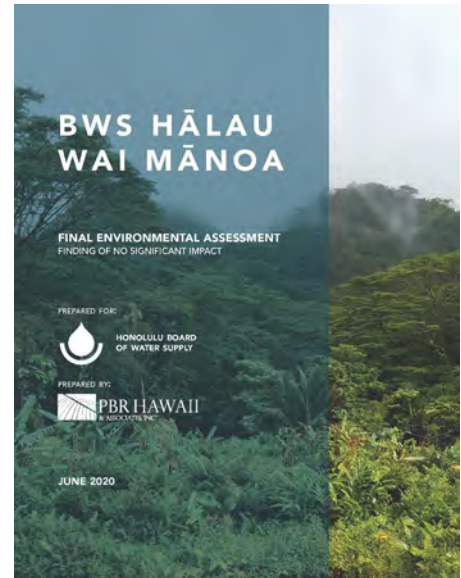
The proposed learning center is conceptualized as:

- An education center for place-based education programs for schools (e.g., a hale/open-air structure for gathering out of the elements);
- A place for hands-on opportunities to learn about watershed protection, sustainable agriculture/living (e.g., establishing and working on lo'i, gardening/practicing regenerative agricultural methods to grow own food/materials); and
- A base for mauka restoration efforts in Mānoa (e.g., removal of invasive species including ungulate control, forest restoration with site appropriate native species, erosion control/soil stabilization to reduce polluted runoff and sediment loading of the streams).

PBR HAWAII completed an HRS 343 Final EA/FONSI to consider the impacts of the proposed action on the human and natural environment.

Ala Wai Golf Course Driving Range Improvements - Chapter 343 HRS Exemption, O'ahu

PBR HAWAII addressed environmental requirements under Chapter 343, Hawai'i Revised Statutes (HRS) for improvements to the Ala Wai Golf Course Driving Range. As part of this work PBR HAWAII compiled the appropriate Chapter 343 exemption documentation, coordinated supporting studies, and facilitated agency review with the State Historic Preservation District (SHPD) and the United States Fish and Wildlife Service (USFWS). The exemption documentation package included: an Exemption Declaration Form, project location and land use maps, consultation correspondence documentation, a flora and fauna survey, and an archaeological monitoring plan.



Hawai'i Public Housing Authority Administrative Offices Redevelopment EIS, O'ahu

PBR HAWAII successfully completed a HRS Chapter 343 Final Environmental Impact Statement (EIS) for: 1) the proposed redevelopment of the Hawai'i Public Housing Authority (HPHA)'s administrative offices; and 2) mixed-use development of affordable senior rental housing units and ancillary commercial uses, on a six-acre portion of the state-owned land parcel which currently houses HPHA's existing administrative campus in Kapālama, Honolulu.

PBR HAWAII's services also included the successful approval of the project's 201H application through the Department of Planning and Permitting and the Honolulu City Council.



Punawai Rest Stop (Kūwili Hygiene Center) NEPA Environmental Assessment, O'ahu

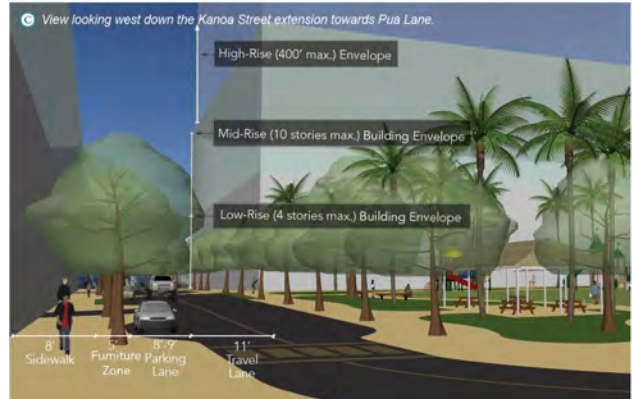
PBR HAWAII prepared a HUD-compliant NEPA EA to support the City and County of Honolulu's Punawai Rest Stop (Kūwili Hygiene Center). The project involves rehabilitating an existing four-story industrial building and to convert the building's use to provide services for homeless individuals and families. The facility will provide resources such as showers and laundry facilities, social welfare services, and permanent supportive housing. The NEPA EA process included Section 106 consultations and close coordination with the State Historic Preservation Division archaeology branch as the building site is located in an industrial area that was built upon a Hawaiian fishpond.



Mayor Wright Homes Redevelopment, O'ahu

PBR HAWAII was the prime planning consultant for the Mayor Wright Homes (MWH) Redevelopment project. The project included: 1) redevelopment of the 15-acre property into a new mixed-income, mixed-use transit-oriented (TOD) community, mixed-finance neighborhood; 2) one-for-one replacement of the existing 364 public housing units with additional affordable/workforce and market rate housing. PBR HAWAII was responsible for: 1) developing and implementing the community engagement process; 2) coordinating the master planning process; 3) preparing and processing State and Federal environmental review documents; and 4) securing the entitlements for the project.

A key element of the planning effort is development and implementation of a robust community engagement process. In engaging the community, PBR HAWAII worked with the development and consultant team in identifying key representatives from Mayor Wright Homes and the surrounding community to serve on a Community Advisory Committee. (CAC). The CAC's task is to provide input and guide the community engagement process. Other community engagement techniques included stakeholder meetings (with community leaders, residents, business owners and service providers); resident meetings held at MWH; community meetings; and a weeklong charrette held onsite at MWH. The planning team also met with legislators, City Councilmembers, and governmental agencies to receive input and for coordination on the project.



The community engagement process deeply informed PBR HAWAII's coordination efforts around Mayor Wright Homes Preliminary Redevelopment Master Plan. The Draft Master Plan was developed during this week-long workshop was presented to the community on the last day of the charrette. The Master Plan included: site history, planning and regulatory context for the site; information from preliminary studies; the community-based vision and master plan; a conceptual landscape design; design guidelines; and a social capital plan.

PBR HAWAII prepared and processed an Environmental Impact Statement (EIS) for the MWH Redevelopment pursuant to Chapter 343, Hawai'i Revised Statutes (HRS) based on the use of State funds and State lands. Governor David Ige accepted the Final Environmental Impact Statement on April 24, 2018, with publication of the acceptance in the May 8, 2018 edition of The Environmental Notice. PBR HAWAII also prepared an Environmental Assessment (EA) for the project in compliance with the National Environmental Policy Act (NEPA) of 1969, as amended (42 U.S. Code 4321 et seq.) using HUD's online HEROS system. The Request for Release of Funds will be submitted to HUD when project proponents are ready.



Kalihi-Pālama Health Center NEPA and HRS 343 Compliance, O‘ahu

Kalihi-Pālama Health Center (KPHC) is a non-profit organization that emerged out of the need to provide primary health services to low-income Native Hawaiians and New Americans and their extended families, populations that typically face significant barriers when accessing healthcare. The KPHC proposes to redevelop a commercial building and a parking lot, by adding a new building (with parking) over the existing parking lot and renovating the existing building. The project site is located at the ‘Ewa/mauka corner of North King Street and Pua Lane.

The redevelopment will consolidate the three existing KPHC Kalihi facilities within a single structure, while at the same time increasing the square footage in order to serve a growing number of patients and to provide space for new services. The Chinatown location will remain. The KPHC will have beneficial impacts on the existing community by providing additional health services and improved facilities to administer health programs. The consolidated facility will make it easier for patients to access multiple services in a single visit.

Since the project may use State and County funding, and will be receiving Federal funding, PBR HAWAII was contracted to prepare an environmental assessment that will meet both State and Federal environmental assessment requirements. The Final Environmental Assessment/Finding of No Significant Impact in compliance with Hawai‘i Revised Statutes – Chapter 343, was completed in August 2015. The completed HUD and NEPA environmental assessments were completed and submitted in September 2016.



8/12/2013
Project Number: 13-041-00

KPHC - Health and Healing Home

Rendering (Perspective)

Project Location: 710 N. King St.
Honolulu, HI 96817

05

Sand Island Business Association Environmental Assessment, O'ahu

The Sand Island Business Association (SIBA) is a 501c(3) non-profit that holds a 73-acre lease over Sand Island Industrial Park. For 26 years, SIBA has operated from a temporary office trailer at 1115 Makepono Street. The trailer is aging and undersized to house SIBA staff and operations, thus a new office space is desired. Lands leased by SIBA are sublet to tenants operating 85 businesses with approximately 3,000 employees. Most of the businesses are land-intensive industrial uses with limited employee parking, resulting in employees parking illegally on-street, double parking in the subdivision, or parking on the undeveloped Project Site.

PBR HAWAII prepared an Environmental Assessment (EA) for SIBA's proposed project to develop a 1.29-acre parcel of land owned by the State of Hawai'i DLNR with an approximately 2,000 square-foot office building and parking lot. The office building is intended for use by SIBA and will replace the existing temporary office trailer. The much-needed parking spaces are intended to serve both the SIBA office as well as overflow employee parking for SIBA tenants. The proposed Project would also generate parking revenue to assist with development costs, lease rent, and real property taxes for the non-profit organization.



Ho'olehua Water System Improvements USDA Preliminary Engineering Report and Environmental Report; HUD Compliant Environmental Assessment; Chapter 343 HRS Environmental Assessment, Moloka'i

PBR HAWAII prepared environmental documentation in compliance with federal and State of Hawaii requirements for the planned rehabilitation of the potable water system owned and operated by the Department of Hawaiian Home Lands on the island of Moloka'i.

The community articulated the need for the project to DHHL staff and PBR HAWAII planners in 2007 during the course of working together on the Moloka'i Regional Plan.

As the project scope developed, it was determined that the cost of the system would necessitate funds from the USDA's Rural Development program and HUD's Native American Housing and Self-Determination Act programs. The two federal programs required similar, but discrete environmental documentation to satisfy program requirements and NEPA.

To meet all requirements, PBR HAWAII worked closely with DHHL staff to: 1) manage a civil engineer in preparing a Preliminary Engineering Report in satisfaction of USDA requirements; 2) prepare two federal environmental assessments; 3) conduct an 8-step analysis for lands that may be wetlands to satisfy HUD requirements; 4) conduct consultation and documentation to satisfy Section 106 of the National Historic Preservation Act; and 5) prepare an environmental assessment to satisfy state requirements under Chapter 343 HRS.

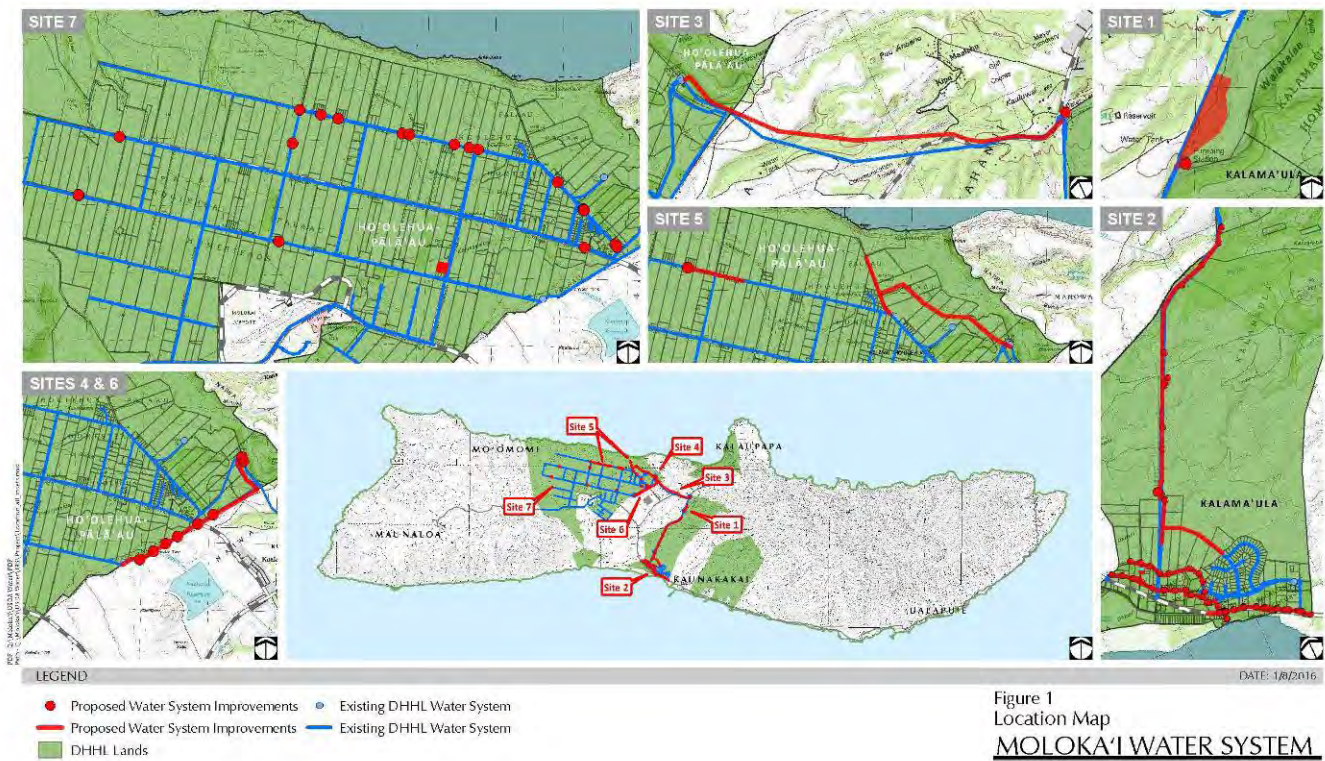


Figure 1
Location Map
MOLOKA'I WATER SYSTEM
Department of Hawaiian Home Lands
Island of Moloka'i

Scale: Department of Hawaiian Home Lands (DHL) U.S. Geological Survey
Disclaimer: This map is for informational purposes only and should not be used for any other purpose without the approval of the user.

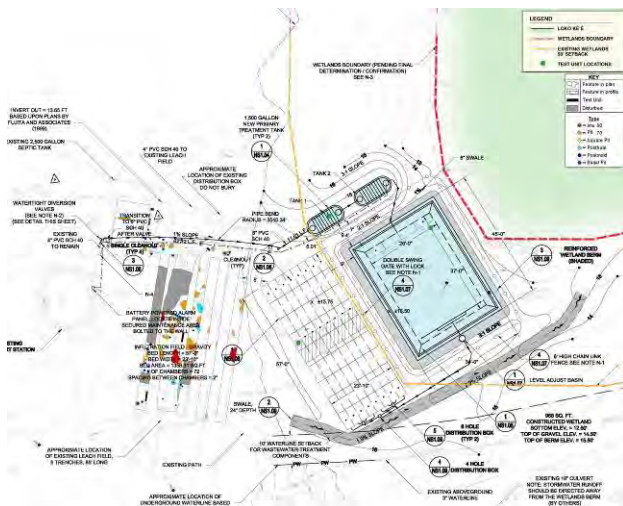


Hā'ena State Park Individual Wastewater System Improvements (Constructed Wetlands), Kaua'i

PBR HAWAII prepared and processed an environmental assessment (EA) with a finding of no significant impact (FONSI) and Special Management Area (SMA) Use Permit application for an innovative wastewater treatment facility at Hā'ena State Park. The purpose of the project was to address a community concern that the existing septic tank and leach field were desecrating known archaeological resources.

A constructed wetland system was proposed to treat water to a higher quality and dispose of it in a less culturally sensitive location than the more conventional system allowed.

The site presented numerous challenges due to proximity to known archaeological sites, an existing wetland, and a State Highway designated on the National and State Register of Historic places. However, through a series of public meetings, State Parks, their consultant team, and the community worked together to advance the constructed wetland through the State EA/FONSI (HRS 343) and County SMA processes.



University of Hawai'i West O'ahu - EIS, Kapolei, O'ahu

PBR HAWAII completed a final environmental impact statement for the University of Hawai'i West O'ahu (UHWO) and successfully obtained all major discretionary entitlements for the project, including a Plan Review Use Approval, and a Change in Zoning. PBR HAWAII also assisted with the successful amendments to the Land Use Commission Decision & Order which ran with the property. The project includes the development of the UHWO campus, residential (including student housing and affordable housing), commercial, mixed, and public uses. PBR HAWAII is currently assisting the UHWO in working toward compliance with the various Plan Review Use and zoning conditions.

Water Distribution System USDA-RD Packets

In support of the development of DHHL trust lands, water distribution infrastructure often needs to be expanded or improved, particularly in rural areas. DHHL works to reduce development costs through partnerships, loans, grants, sweat equity, and other means.

Working with Nā Kupa‘a o Kūhiō to further DHHL’s objectives, and in support of Nā Kupa‘a o Kūhiō’s submittal to United States Department of Agriculture-Rural Development (USDA-RD) for NEPA Compliance with 7 CFR 1794, PBR HAWAII prepared and consolidated environmental and engineering documentation for the:

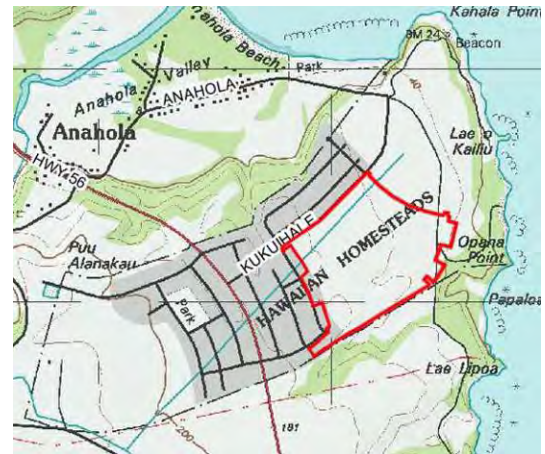
- Pi‘ilani Mai Ke Kai Water Distribution System
- Kakaina Water Distribution System
- East Kapolei IIA Water Distribution System
- East Kapolei IIB Water Distribution System, and
- Maku‘u Offsite Water System

This work included analysis of GIS data, the preparation of GIS maps, and also: 1) review of previously prepared plans; 2) data collection; 3) revision of a Preliminary Engineering Report (PER) to meet USDA requirements; 4) preparation of FEMA Form 81-93; and 5) preparation of an environmental summary (ES). After the above work was completed, a packet with FEMA Form 81-93, the revised PER and the ES was reviewed approved by Nā Kupa‘a o Kūhiō in March 2009 and has since been submitted to USDA. As a result Nā Kupa‘a o Kūhiō funding has been awarded for several of the water system projects.

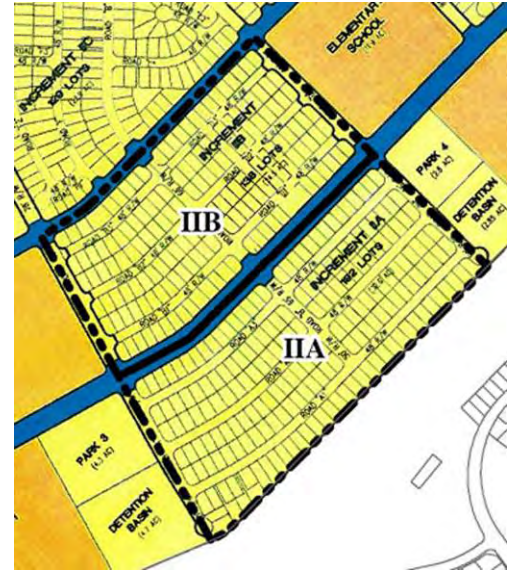
Descriptions of the individual water systems are included below:

Pi‘ilani Mai Ke Kai Water Distribution System. The proposed Pi‘ilani Mai Ke Kai Water Distribution System includes the construction of a potable water distribution system that would include 3,170 linear feet of distribution mains and laterals onsite as well as 518 linear feet of distribution mains offsite. To improve fire protection, five fire hydrants and ancillary piping is also required. Nā Kupa‘a o Kūhiō requested funds in the form of loans and grants from the USDA-RD to develop these potable and fire protection water distribution systems, ultimately reducing development costs.

Kakaina Water Distribution System. The proposed Kakaina Water Distribution System included the construction of a potable water distribution system that would include 1,700 linear feet of water mains as well as connection to 50 individual water laterals. Nā Kupa‘a o Kūhiō requested funds in the form of loans and grants from the USDA-RD to develop this distribution system, ultimately reducing development costs.



East Kapolei IIA Water Distribution System. The proposed East Kapolei IIA Water Distribution System includes the construction of a potable water distribution system that would include 7,192 linear feet of water mains as well as the installation of 89 water laterals. To improve fire protection, 23 fire hydrants and ancillary piping is also required. Nā Kupa‘a o Kūhiō requested funds in the form of loans and grants from the USDA-RD to develop these potable and fire protection water distribution systems, ultimately reducing development costs.



East Kapolei IIB Water Distribution System. The proposed East Kapolei IIB Water Distribution System includes the construction of a potable water distribution system that would include 8,840 linear feet of water mains as well as the installation of 809 water laterals. To improve fire protection, 24 fire hydrants and ancillary piping is also required. Nā Kupa‘a o Kūhiō requested funds in the form of loans and grants from the USDA-RD to develop these potable and fire protection water distribution systems, ultimately reducing development costs.

Maku‘u Offsite Water System. To meet the needs of a community currently using rainwater catchment systems to collect drinking water, the proposed Maku‘u Offsite Water System will include the construction and testing of an exploratory well. If tests indicate adequate capacity and quality, the project will also include conversion to a production well, construction of 1.0 million gallon reservoir, and installation of conveyance piping to existing distribution system. In support of this water system, the project will also require development of an access road, and appurtenant facilities such as booster pump, electrical transmission, electrical facilities, control building, chlorinator, drainage, fencing, etc. Nā Kupa‘a o Kūhiō requested funds in the form of loans and grants from the USDA-RD to develop these potable and fire protection water distribution systems, ultimately reducing development costs.

