

2024 N. King Street  
Suite 200  
Honolulu, Hawaii 96819-3494  
Telephone 808 842 1133  
Fax 808 842 1937  
eMail: rmtowill@rmtowill.com



R.M. TOWILL CORPORATION  
SINCE 1930

Planning  
Engineering  
Environmental Services  
Photogrammetry  
Surveying  
Construction Management

June 27, 2024

Mr. Victor Kandle  
Mass Transit Administrator & General Manager  
Mass Transit Agency  
County of Hawai'i  
25 Aupuni Street  
Hilo, Hawai'i 96720

**TA.4) Community Planning  
(Public Transit Mapping and Graphic Design)**

Dear Mr. Kandle,

**Professional Services during the Fiscal Year 2024-2025, beginning July 1, 2024**

The R. M. Towill Corporation is pleased to submit our qualifications in response to the County of Hawai'i's internet announcement on June 1, 2024. The firm is interested in providing professional services in the following area:

**TA.4). Community Planning (Public Transit Mapping and Graphic Design)**

The other requested information is presented below:

**1. The name of the firm or person, the principal place of business, and location of all of its offices:**

**R. M. Towill Corporation**

Main Office: 2024 North King Street, Suite 200  
Honolulu, Hawai'i 96819-3494  
Kailua-Kona Office: 73-5574 Maiiau Street, Suite 11  
Kailua-Kona, Hawai'i 96740

**2. The age of the firm and its average number of employees over the past five years:**

The R. M. Towill Corporation has been in business in Hawai'i for 94 years. The average number of employees over the past five years was 120.

**3. Education, training and qualifications of the firm and its key employees:**

Please see Tabs 1, 2, and 3 of the attached DPW Form 120 (Rev. 6/99) form.

**4. A list of recent projects and the names of up to five clients who may be contacted, including at least two for whom services were rendered during the preceding year:**

**Tracy Tonaki, D.R. Horton Hawaii, (808) 782-4109**

Project: Hoopili Development, O'ahu (various projects)

RMTC Services Performed: Community Planning, Environmental Documentation and Permitting, Civil Engineering

Most Recent Year in which Services were Provided: 2024 (Ongoing)

Mr. Victor Kandle  
Mass Transit Agency  
June 27, 2024  
Page 2

**Lori Kahikina, Honolulu Authority for Rapid Transportation, (808) 768-6262**

Project: Honolulu Rail Transit Project, 138kV Relocation of Overhead Lines Along Kamehameha Highway, O'ahu; Honolulu Rail Transit Project, Real Estate Mapping and Surveying Services, O'ahu; various other projects

RMTC Services Performed: Civil Engineering, Surveying, Environmental Documentation and Permitting, Construction Management

Most Recent Year in which Services were Provided: 2024 (Ongoing)

**Grant Murakami, PBR Hawaii & Associates, (808) 521-5631**

Project: General Transit Oriented Development (TOD) Iwilei Station Area Master Plan, O'ahu; Civic Center Master Plan and Iwilei Neighborhood Infrastructure, O'ahu; State TOD Planning and Implementation, O'ahu

RMTC Services Performed: Community Planning, Environmental Documentation and Permitting, Civil Engineering, Surveying

Most Recent Year in which Services were Provided: 2024 (Ongoing)

**5. Any Promotional or Descriptive Literature:**

Please see DPW Form 120 (Rev. 6/99), Tab 10, "Statement of Qualifications."

Thank you for the opportunity to submit our firm's professional qualifications. If you have questions or need additional information, please email me at [GregH@rmtowill.com](mailto:GregH@rmtowill.com) or call me at (808) 842-1133.

Very truly yours,



Greg H. Hyakumoto, P.E.  
President

GHH:as  
Attachments



# Statement of Qualifications

Professional Services During the Fiscal Year 2024-2025  
Beginning July 1, 2024

County of Hawaii  
Planning Department



R. M. TOWILL CORPORATION

Planning  
Civil Engineering  
Wastewater Engineering  
Surveying & Mapping  
Project Management  
Construction Management

**Honolulu Office**  
2024 N. King Street  
Suite 200  
Honolulu, HI 96819-3494  
V: 808.842.1133  
F: 808.842.1937

**Kona Office**  
73-5574 Maiau Street  
Suite 11  
Kailua-Kona, HI 96740  
V: 808.329.4494  
F: 808.329.4495  
email: [rmtowill@rmtowill.com](mailto:rmtowill@rmtowill.com)

[www.rmtowill.com](http://www.rmtowill.com)

DPW Form 120 (Rev. 6/99)

TA.4) Community Planning  
(Public Transit Mapping and Graphic Design)

**STATE OF HAWAII**

DEPARTMENT OF ACCOUNTING AND GENERAL SERVICES

**QUESTIONNAIRE FOR ARCHITECTS, ENGINEERS AND OTHER PROFESSIONAL SERVICES**

**TABLE OF CONTENTS**

<b>TAB 1</b>	<b>DPW Form 120, Page 1 of 9</b>
<b>TAB 2</b>	<b>DPW Form 120, Page 2 of 9</b>
<b>TAB 3</b>	<b>DPW Form 120, Page 3 of 9</b>
<b>TAB 4</b>	<b>DPW Form 120, Page 4 of 9</b>
<b>TAB 5</b>	<b>DPW Form 120, Page 5 of 9</b>
<b>TAB 6</b>	<b>DPW Form 120, Page 6 of 9</b>
<b>TAB 7</b>	<b>DPW Form 120, Page 7 of 9</b>
<b>TAB 8</b>	<b>DPW Form 120, Page 8 of 9</b>
<b>TAB 9</b>	<b>DPW Form 120, Page 9 of 9</b>
<b>TAB 10</b>	<b>Promotional Material: R. M. Towill Corporation Statement of Qualifications</b>

**STATE OF HAWAII**

DEPARTMENT OF ACCOUNTING AND GENERAL SERVICES

**QUESTIONNAIRE FOR ARCHITECTS, ENGINEERS AND OTHER PROFESSIONAL SERVICES**

QUESTIONNAIRE FOR: (LIST DISCIPLINE)  TA.4) Community Planning (Public Transit Mapping and Graphic Design)	OTHER QUESTIONNAIRES SUBMITTED: (LIST DISCIPLINES)  None	DATE  June 27, 2024
------------------------------------------------------------------------------------------------------------------	----------------------------------------------------------------	---------------------------

FIRM NAME  <b>R. M. TOWILL CORPORATION</b>	ESTABLISHED YEAR STATE 1930 HI	TYPE OF ORGANIZATION (Underline)  INDIVIDUAL PARTNERSHIPS <u>CORPORATION</u> JOINT VENTURE OTHER
--------------------------------------------------	-----------------------------------	--------------------------------------------------------------------------------------------------------

BUSINESS ADDRESS, TELEPHONE & FAX NO. OF HAWAII OFFICE 2024 North King Street, Suite 200 Telephone: (808) 842-1133 Honolulu, Hawaii 96819-3494 Fax: (808) 842-1937 www.rmtowill.com Email: rmtowill@rmtowill.com	AGE OF FIRM  94	FEDERAL ID NO. 99-0144094 (TIN) GE 056-705-4336-01 (State ID)	YEARS ESTABLISHED IN HAWAII  94
---------------------------------------------------------------------------------------------------------------------------------------------------------------------------------------------------------------------------	-----------------------	---------------------------------------------------------------------	---------------------------------------

PRINCIPALS OF FIRM: (NAMES) President Greg H. Hiyakumoto, PE, LEED AP, ENV SP Vice President James Yamamoto, PE Vice President Collins Lam, PE Vice President David Tanoue, Esq.	Vice President Craig Luke, PE Vice President Kyle Yukumoto, PE Treasurer Jon Yamanishi, CPA Secretary Michael Inouye	ASSOCIATE MEMBERS OF FIRM: (NAMES)  None
----------------------------------------------------------------------------------------------------------------------------------------------------------------------------------------------	-------------------------------------------------------------------------------------------------------------------------------	------------------------------------------------

PRESENT BRANCH OFFICE(S) (ADDRESS, TELEPHONE & FAX NO.) KAILUA-KONA Kalepa Business Center 73-5574 Maiiau St., Suite #11 Kailua-Kona, Hawaii 96740 Telephone: (808) 329-4494 Fax: (808) 329-4495	PERSON IN CHARGE: (NAMES) Greg H. Hiyakumoto, PE, LEED AP, ENV SP President (Main Office)
--------------------------------------------------------------------------------------------------------------------------------------------------------------------------------------------------------------	----------------------------------------------------------------------------------------------------

**NUMBER OF PERSONNEL IN YOUR PRESENT ORGANIZATION**

LOCATED AT	PRINCIPALS & KEY PERSONNEL			OTHER PERSONNEL											TOTAL
	Architect	Engineer	Others	Architect	Engineers				Draftsmen	Spec. Writer	Estimator	Inspector	Surveyor	Balance**	
					Mechanical	Electric	Civil	Others*							
HOME OFFICE	0	5	3	1	0	0	36	8	3	1	1	9	15	40	122
BRANCH OFFICES	0	0	0	0	0	0	1	0	0	0	0	0	1	1	3
<b>TOTAL</b>	<b>0</b>	<b>5</b>	<b>3</b>	<b>1</b>	<b>0</b>	<b>0</b>	<b>37</b>	<b>8</b>	<b>3</b>	<b>1</b>	<b>1</b>	<b>9</b>	<b>16</b>	<b>41</b>	<b>125</b>

TECHNICAL PERSONNEL: 90	NO. OF PERSONNEL WITH HAWAII LICENSES: 46	NO. OF TECHNICAL PERSONNEL WITHOUT HAWAII LICENSES: 44
-------------------------	-------------------------------------------	--------------------------------------------------------

\* Others: Resident Managers / Construction Engineers

\*\* Balance includes planners, photogrammetrists, junior engineers (unlicensed), interns, and administrative personnel.

## PERSONAL HISTORY STATEMENT OF PRINCIPALS AND ASSOCIATES WITHIN YOUR FIRM

<small>NAME</small> <b>HIYAKUMOTO, GREG H.</b>				<small>RESIDENT OF</small> Hawaii, USA				<small>NAME</small> <b>YAMAMOTO, JAMES H.</b>				<small>RESIDENT OF</small> Hawaii, USA			
<small>TITLE</small> President								<small>TITLE</small> Vice President and Senior Project Manager							
<small>YEARS OF EXPERIENCE</small> 39		<small>AS PRINCIPAL IN THIS FIRM</small> 21		<small>AS PRINCIPAL IN OTHER FIRMS</small> 0		<small>OTHER THAN PRINCIPAL</small> 18		<small>YEARS OF EXPERIENCE</small> 45		<small>AS PRINCIPAL IN THIS FIRM</small> 23		<small>AS PRINCIPAL IN OTHER FIRMS</small> 0		<small>OTHER THAN PRINCIPAL</small> 22	
<small>EDUCATION (COLLEGE, DEGREE, YEAR, SPECIALIZATION)</small> University of Hawaii at Manoa - M.S., 1991, Structural Engineering University of Hawaii at Manoa - B.S., 1984, Civil Engineering								<small>EDUCATION (COLLEGE, DEGREE, YEAR, SPECIALIZATION)</small> California Institute of Technology - M.S., 1979, Civil Engineering California Institute of Technology - B.S., 1978, Engineering and Applied Science Whitman College - B.A., 1976, Mathematics and Physics							
<small>MEMBERSHIP IN PROFESSIONAL ORGANIZATIONS</small> American Society of Civil Engineers American Society of Dam Safety Officials Institute of Transportation Engineers American Public Works Association Chi Epsilon, Sigma Xi								<small>MEMBERSHIP IN PROFESSIONAL ORGANIZATIONS</small> American Society of Civil Engineers American Water Works Association							
<small>REGISTRATION (TYPE, YEAR, STATE)</small> Professional Civil Engineer - 1991 Guam (CE 856); 1989 Hawaii (PE-6662) Envision™ Sustainability Professional Credential ENV SP - 2015; LEED AP - 2009 Erosion and Sediment Control Plan Coordinator (City); Certified Erosion and Sediment Control Plan Preparer (City); Certified Water Pollution Plan Preparer (City)								<small>REGISTRATION (TYPE, YEAR, STATE)</small> Professional Civil Engineer - 1983 Hawaii (PE-5491)							
<small>NAME</small> <b>LAM, COLLINS D.</b>				<small>RESIDENT OF</small> Hawaii, USA				<small>NAME</small> <b>TANOUE, DAVID K.</b>				<small>RESIDENT OF</small> Hawaii, USA			
<small>TITLE</small> Vice President and Manager, Civil Engineering Department								<small>TITLE</small> Vice President and Manager, Surveying and Planning Departments							
<small>YEARS OF EXPERIENCE</small> 29		<small>AS PRINCIPAL IN THIS FIRM</small> 12		<small>AS PRINCIPAL IN OTHER FIRMS</small> 0		<small>OTHER THAN PRINCIPAL</small> 17		<small>YEARS OF EXPERIENCE</small> 34		<small>AS PRINCIPAL IN THIS FIRM</small> 12		<small>AS PRINCIPAL IN OTHER FIRMS</small> 0		<small>OTHER THAN PRINCIPAL</small> 22	
<small>EDUCATION (COLLEGE, DEGREE, YEAR, SPECIALIZATION)</small> University of Hawaii at Manoa - M.S., 1997, Civil Engineering Louisiana State University - B.S., 1994, Civil Engineering								<small>EDUCATION (COLLEGE, DEGREE, YEAR, SPECIALIZATION)</small> University of Hawaii at Manoa - J.D., 1990 University of Hawaii at Manoa - B.A., 1986, Biology							
<small>MEMBERSHIP IN PROFESSIONAL ORGANIZATIONS</small> Hawaii Water Environmental Association Chi Epsilon Tau Beta Pi								<small>MEMBERSHIP IN PROFESSIONAL ORGANIZATIONS</small> Urban Land Institute Lambda Alpha International							
<small>REGISTRATION (TYPE, YEAR, STATE)</small> Professional Civil Engineer - 2001 Hawaii (PE-10270)								<small>REGISTRATION (TYPE, YEAR, STATE)</small> Hawaii Bar Association - 1990							

**PERSONAL HISTORY STATEMENT OF PRINCIPALS AND ASSOCIATES WITHIN YOUR FIRM**

<b>NAME</b> <p style="text-align: center;"><b>LUKE, CRAIG W.L.</b></p>				<b>RESIDENT OF</b> <p style="text-align: center;">Hawaii, USA</p>				<b>NAME</b> <p style="text-align: center;"><b>YUKUMOTO, KYLE</b></p>				<b>RESIDENT OF</b> <p style="text-align: center;">Hawaii, USA</p>			
<b>TITLE</b> <p style="text-align: center;">Vice President and Senior Project Manager</p>								<b>TITLE</b> <p style="text-align: center;">Vice President and Manager, Water and Wastewater Department</p>							
<b>YEARS OF EXPERIENCE</b> <p style="text-align: center;">38</p>		<b>AS PRINCIPAL IN THIS FIRM</b> <p style="text-align: center;">9</p>		<b>AS PRINCIPAL IN OTHER FIRMS</b> <p style="text-align: center;">0</p>		<b>OTHER THAN PRINCIPAL</b> <p style="text-align: center;">29</p>		<b>YEARS OF EXPERIENCE</b> <p style="text-align: center;">29</p>		<b>AS PRINCIPAL IN THIS FIRM</b> <p style="text-align: center;">5</p>		<b>AS PRINCIPAL IN OTHER FIRMS</b> <p style="text-align: center;">0</p>		<b>OTHER THAN PRINCIPAL</b> <p style="text-align: center;">24</p>	
<b>EDUCATION (COLLEGE, DEGREE, YEAR, SPECIALIZATION)</b> University of Hawaii at Manoa - B.S., 1985, Civil Engineering								<b>EDUCATION (COLLEGE, DEGREE, YEAR, SPECIALIZATION)</b> Colorado State University - M.S., 1995, Civil Engineering University of Hawaii at Manoa - B.S., 1993, Civil Engineering							
<b>MEMBERSHIP IN PROFESSIONAL ORGANIZATIONS</b> Chi Epsilon								<b>MEMBERSHIP IN PROFESSIONAL ORGANIZATIONS</b> American Society of Civil Engineers American Water Works Association Water Environment Federation Chi Epsilon							
<b>REGISTRATION (TYPE, YEAR, STATE)</b> Professional Civil Engineer - 1990 Hawaii (PE-6935)								<b>REGISTRATION (TYPE, YEAR, STATE)</b> Professional Civil Engineer - 1990 Hawaii (PE-9280)							
<b>NAME</b> <p style="text-align: center;"><b>INOUYE, MICHAEL S.</b></p>				<b>RESIDENT OF</b> <p style="text-align: center;">Hawaii, USA</p>				<b>NAME</b> <p style="text-align: center;"><b>YAMANISHI, JON</b></p>				<b>RESIDENT OF</b> <p style="text-align: center;">Hawaii, USA</p>			
<b>TITLE</b> <p style="text-align: center;">Secretary / Manager, Construction Management Department</p>								<b>TITLE</b> <p style="text-align: center;">Treasurer / Controller</p>							
<b>YEARS OF EXPERIENCE</b> <p style="text-align: center;">39</p>		<b>AS PRINCIPAL IN THIS FIRM</b> <p style="text-align: center;">2</p>		<b>AS PRINCIPAL IN OTHER FIRMS</b> <p style="text-align: center;">0</p>		<b>OTHER THAN PRINCIPAL</b> <p style="text-align: center;">37</p>		<b>YEARS OF EXPERIENCE</b> <p style="text-align: center;">37</p>		<b>AS PRINCIPAL IN THIS FIRM</b> <p style="text-align: center;">&lt;1</p>		<b>AS PRINCIPAL IN OTHER FIRMS</b> <p style="text-align: center;">0</p>		<b>OTHER THAN PRINCIPAL</b> <p style="text-align: center;">37</p>	
<b>EDUCATION (COLLEGE, DEGREE, YEAR, SPECIALIZATION)</b> University of Hawaii at Manoa - B.S., 1987, Civil Engineering								<b>EDUCATION (COLLEGE, DEGREE, YEAR, SPECIALIZATION)</b> University of Hawaii at Manoa - B.B.A., 1986, Business Administration							
<b>MEMBERSHIP IN PROFESSIONAL ORGANIZATIONS</b> Construction Management Association of America								<b>MEMBERSHIP IN PROFESSIONAL ORGANIZATIONS</b>							
<b>REGISTRATION (TYPE, YEAR, STATE)</b> Construction Quality Management for Contractors; Traffic Control Technician - 2011; Pervious Concrete Technician - 2013; OSHA 10-hour; Stormwater BMP; Concrete CM Master Cert; Fall Protection; City NPDES MS4; PACP/MACP/LACP								<b>REGISTRATION (TYPE, YEAR, STATE)</b> Certified Public Accountant, Hawaii, 1993 (CPA-3045)							

**PERSONAL HISTORY STATEMENT OF TECHNICAL PERSONNEL WITHIN YOUR FIRM**

NAME <b>MENDES, KEVIN T.</b>			STATUS ( <u>underline</u> ) <b>Full-Time</b> Part-Time	NAME <b>ARMSTRONG, STACY K.Y.</b>			STATUS ( <u>underline</u> ) <b>Full-Time</b> Part-Time
TITLE OR POSITION Project Manager (civil)			YEARS OF EXPERIENCE 35	TITLE OR POSITION Project Manager (civil)			YEARS OF EXPERIENCE 34
WITH THIS FIRM 35	WITH LAST FIRM (NAME & NO. OF YEARS) 0		WITH OTHER FIRMS 0	WITH THIS FIRM 34	WITH LAST FIRM (NAME & NO. OF YEARS) 0		WITH OTHER FIRMS 0
EDUCATION (COLLEGE, DEGREE, YEAR, SPECIALIZATION) University of Hawaii at Manoa - B.S., 1989, Civil Engineering				EDUCATION (COLLEGE, DEGREE, YEAR, SPECIALIZATION) University of Redlands - B.S., 1990, General Engineering			
REGISTRATION (TYPE, YEAR, STATE) Professional Civil Engineer - 1994 Hawaii (PE-8200) LEED AP - 2009 Chi Epsilon				REGISTRATION (TYPE, YEAR, STATE) Professional Civil Engineer - 1996 Hawaii (PE-8983) LEED AP BD+C - 2009 ASCE, AWWA, ITE, HAPI			
NAME <b>OKAMOTO, MICHAEL H.</b>			STATUS ( <u>underline</u> ) <b>Full-Time</b> Part-Time	NAME <b>NAKAOKA, BRENT W.</b>			STATUS ( <u>underline</u> ) <b>Full-Time</b> Part-Time
TITLE OR POSITION Project Manager (civil)			YEARS OF EXPERIENCE 32	TITLE OR POSITION Project Manager (civil)			YEARS OF EXPERIENCE 25
WITH THIS FIRM 32	WITH LAST FIRM (NAME & NO. OF YEARS) 0		WITH OTHER FIRMS 0	WITH THIS FIRM 25	WITH LAST FIRM (NAME & NO. OF YEARS) 0		WITH OTHER FIRMS 0
EDUCATION (COLLEGE, DEGREE, YEAR, SPECIALIZATION) University of Hawaii at Manoa - B.S., 1991, Civil Engineering				EDUCATION (COLLEGE, DEGREE, YEAR, SPECIALIZATION) Santa Clara University - B.S., 1999, Civil Engineering			
REGISTRATION (TYPE, YEAR, STATE) Professional Civil Engineer - 1995 Hawaii (PE-8624) LEED AP - 2009; Erosion and Sediment Control Plan Coordinator (City); Certified Erosion and Sediment Control Plan Preparer (City); Certified Water Pollution Plan Preparer (City)				REGISTRATION (TYPE, YEAR, STATE) Professional Civil Engineer - 2003 Hawaii (PE-11106) LEED AP BD+C - 2009; ASCE; Certified Erosion and Sediment Control Plan Preparer (City); Certified Water Pollution Plan Preparer (City DPP)			
NAME <b>CHONG, WALTER G.C.</b>			STATUS ( <u>underline</u> ) <b>Full-Time</b> Part-Time	NAME <b>RING, GORDON T.</b>			STATUS ( <u>underline</u> ) <b>Full-Time</b> Part-Time
TITLE OR POSITION Project Manager (civil)			YEARS OF EXPERIENCE 34	TITLE OR POSITION Project Manager (civil)			YEARS OF EXPERIENCE 31
WITH THIS FIRM 34	WITH LAST FIRM (NAME & NO. OF YEARS) 0		WITH OTHER FIRMS 0	WITH THIS FIRM 31	WITH LAST FIRM (NAME & NO. OF YEARS) 0		WITH OTHER FIRMS 0
EDUCATION (COLLEGE, DEGREE, YEAR, SPECIALIZATION) California Institute of Technology - B.S., 1989, Engineering & Applied Sciences				EDUCATION (COLLEGE, DEGREE, YEAR, SPECIALIZATION) Santa Clara University - B.S., 1993, Civil Engineering			
REGISTRATION (TYPE, YEAR, STATE) Professional Civil Engineer - 1996 Hawaii (PE-8882) ASCE				REGISTRATION (TYPE, YEAR, STATE) Professional Civil Engineer - 1997 Hawaii (PE-9300) LEED AP - 2009			

**PERSONAL HISTORY STATEMENT OF TECHNICAL PERSONNEL WITHIN YOUR FIRM**

<b>NAME</b> <b>TATEISHI, JASON T.</b>			<b>STATUS ( underline)</b> <u>Full-Time</u> Part-Time	<b>NAME</b> <b>NAKAMURA, MICHAEL S.</b>			<b>STATUS ( underline)</b> <u>Full-Time</u> Part-Time
<b>TITLE OR POSITION</b> Project Manager (civil) and Manager, Kailua-Kona Office			<b>YEARS OF EXPERIENCE</b> 20	<b>TITLE OR POSITION</b> Senior Engineer (civil)			<b>YEARS OF EXPERIENCE</b> 22
<b>WITH THIS FIRM</b> 20	<b>WITH LAST FIRM (NAME &amp; NO. OF YEARS)</b> 0		<b>WITH OTHER FIRMS</b> 0	<b>WITH THIS FIRM</b> 22		<b>WITH LAST FIRM (NAME &amp; NO. OF YEARS)</b> 0	<b>WITH OTHER FIRMS</b> 0
<b>EDUCATION (COLLEGE, DEGREE, YEAR, SPECIALIZATION)</b> University of Hawaii at Manoa - B.S., 2003, Civil Engineering				<b>EDUCATION (COLLEGE, DEGREE, YEAR, SPECIALIZATION)</b> University of Hawaii at Manoa - B.S., 2001, Civil Engineering			
<b>REGISTRATION (TYPE, YEAR, STATE)</b> Professional Civil Engineer - 2006 Hawaii (PE-12096)				<b>REGISTRATION (TYPE, YEAR, STATE)</b> Professional Civil Engineer - 2007 Hawaii (PE-12342)			
<b>NAME</b> <b>MIYASHIRO, WAYLEN H.</b>			<b>STATUS ( underline)</b> <u>Full-Time</u> Part-Time	<b>NAME</b> <b>DU, CHI T.</b>			<b>STATUS ( underline)</b> <u>Full-Time</u> Part-Time
<b>TITLE OR POSITION</b> Senior Engineer (civil)			<b>YEARS OF EXPERIENCE</b> 20	<b>TITLE OR POSITION</b> Senior Engineer (civil)			<b>YEARS OF EXPERIENCE</b> 18
<b>WITH THIS FIRM</b> 20	<b>WITH LAST FIRM (NAME &amp; NO. OF YEARS)</b> 0		<b>WITH OTHER FIRMS</b> 0	<b>WITH THIS FIRM</b> 18		<b>WITH LAST FIRM (NAME &amp; NO. OF YEARS)</b> 0	<b>WITH OTHER FIRMS</b> 0
<b>EDUCATION (COLLEGE, DEGREE, YEAR, SPECIALIZATION)</b> University of Hawaii at Manoa - B.S., 2003, Civil Engineering				<b>EDUCATION (COLLEGE, DEGREE, YEAR, SPECIALIZATION)</b> University of Hawaii at Manoa - B.S., 2006, Civil Engineering			
<b>REGISTRATION (TYPE, YEAR, STATE)</b> Professional Civil Engineer - 2009 Hawaii (PE-13234)				<b>REGISTRATION (TYPE, YEAR, STATE)</b> Professional Civil Engineer - 2010 Hawaii (PE-14001) ASCE; Certified Water Pollution Plan Preparer (City); Certified Erosion and Sediment Control Plan Preparer (City); Erosion and Sediment Control Plan Coordinator (City)			
<b>NAME</b> <b>TOM, GREGORY K.</b>			<b>STATUS ( underline)</b> <u>Full-Time</u> Part-Time	<b>NAME</b> <b>YONG, RANDALL S.K.</b>			<b>STATUS ( underline)</b> <u>Full-Time</u> Part-Time
<b>TITLE OR POSITION</b> Senior Engineer (civil)			<b>YEARS OF EXPERIENCE</b> 19	<b>TITLE OR POSITION</b> Senior Engineer (civil)			<b>YEARS OF EXPERIENCE</b> 21
<b>WITH THIS FIRM</b> 19	<b>WITH LAST FIRM (NAME &amp; NO. OF YEARS)</b> 0		<b>WITH OTHER FIRMS</b> 0	<b>WITH THIS FIRM</b> 21		<b>WITH LAST FIRM (NAME &amp; NO. OF YEARS)</b> 0	<b>WITH OTHER FIRMS</b> 0
<b>EDUCATION (COLLEGE, DEGREE, YEAR, SPECIALIZATION)</b> University of California at Los Angeles (UCLA) - B.S., 2005, Civil and Environmental Engineering				<b>EDUCATION (COLLEGE, DEGREE, YEAR, SPECIALIZATION)</b> University of Southern California - B.S., 2002, Mechanical Engineering			
<b>REGISTRATION (TYPE, YEAR, STATE)</b> Professional Civil Engineer - 2010 Hawaii (PE-13775) LEED AP BD+C - 2009; Certified Erosion and Sediment Control Plan Preparer (City); Erosion and Sediment Control Plan Coordinator (City)				<b>REGISTRATION (TYPE, YEAR, STATE)</b> Professional Civil Engineer - 2008 Hawaii (PE-12986) LEED AP - 2009; Certified Erosion and Sediment Control Plan Preparer (City); Certified Water Pollution Plan Preparer (City)			

**PERSONAL HISTORY STATEMENT OF TECHNICAL PERSONNEL WITHIN YOUR FIRM**

NAME <b>LIAO, TSUNG-I</b>			STATUS ( <u>underline</u> ) <b>Full-Time</b> Part-Time	NAME <b>INABA, DARREN</b>			STATUS ( <u>underline</u> ) <b>Full-Time</b> Part-Time
TITLE OR POSITION Senior Engineer (civil)			YEARS OF EXPERIENCE 21	TITLE OR POSITION Engineer (civil)			YEARS OF EXPERIENCE 12
WITH THIS FIRM 21	WITH LAST FIRM (NAME & NO. OF YEARS) 0		WITH OTHER FIRMS 0	WITH THIS FIRM 4	WITH LAST FIRM (NAME & NO. OF YEARS) AECOM (1 yr)		WITH OTHER FIRMS 8
EDUCATION (COLLEGE, DEGREE, YEAR, SPECIALIZATION) University of Hawaii at Manoa - M.S., 2003, Civil Engineering University of Hawaii at Manoa - B.S., 1999, Civil Engineering				EDUCATION (COLLEGE, DEGREE, YEAR, SPECIALIZATION) Oregon State University - M.S., 2012, Water Resource Engineering Oregon State University - B.S., 2010, Civil Engineering			
REGISTRATION (TYPE, YEAR, STATE) Professional Civil Engineer - 2009 Hawaii (PE-13247) ASCE; Certified Erosion and Sediment Control Plan Preparer (City); Certified Water Pollution Plan Preparer (City)				REGISTRATION (TYPE, YEAR, STATE) Professional Civil Engineer - 2016 Hawaii (PE-17343)			
NAME <b>ICHIKAWA, DANIEL H.</b>			STATUS ( <u>underline</u> ) Full-Time <b>Part-Time</b>	NAME <b>LUKE, CRISTINA L.</b>			STATUS ( <u>underline</u> ) <b>Full-Time</b> Part-Time
TITLE OR POSITION Engineer (civil)			YEARS OF EXPERIENCE 11	TITLE OR POSITION Engineer (civil)			YEARS OF EXPERIENCE 10
WITH THIS FIRM 11	WITH LAST FIRM (NAME & NO. OF YEARS) 0		WITH OTHER FIRMS 0	WITH THIS FIRM 9	WITH LAST FIRM (NAME & NO. OF YEARS) Austin, Tsutsumi & Assoc. (1 year)		WITH OTHER FIRMS 1
EDUCATION (COLLEGE, DEGREE, YEAR, SPECIALIZATION) Oregon State University - B.S., 2013, Civil Engineering				EDUCATION (COLLEGE, DEGREE, YEAR, SPECIALIZATION) Oregon State University - B.S., 2013, Civil Engineering			
REGISTRATION (TYPE, YEAR, STATE) Professional Civil Engineer - 2017 Hawaii (PE-17842)				REGISTRATION (TYPE, YEAR, STATE) Professional Civil Engineer - 2017 Hawaii (PE-17813)			
NAME <b>HONG, RAYSHI</b>			STATUS ( <u>underline</u> ) <b>Full-Time</b> Part-Time	NAME <b>BISEN, BRIAN</b>			STATUS ( <u>underline</u> ) <b>Full-Time</b> Part-Time
TITLE OR POSITION Engineer (civil)			YEARS OF EXPERIENCE 10	TITLE OR POSITION Engineer (civil)			YEARS OF EXPERIENCE 5
WITH THIS FIRM 3	WITH LAST FIRM (NAME & NO. OF YEARS) Group 70 (1 yr)		WITH OTHER FIRMS 7	WITH THIS FIRM 5	WITH LAST FIRM (NAME & NO. OF YEARS) 0		WITH OTHER FIRMS 0
EDUCATION (COLLEGE, DEGREE, YEAR, SPECIALIZATION) University of Hawaii at Manoa - B.S., 2013, Civil Engineering University of Washington - B.S., 2011, Economics, Minor in Mathematics				EDUCATION (COLLEGE, DEGREE, YEAR, SPECIALIZATION) University of Hawaii at Manoa - B.S., 2019, Civil Engineering			
REGISTRATION (TYPE, YEAR, STATE) Professional Civil Engineer - 2018 Hawaii (PE-18077) Chi Epsilon				REGISTRATION (TYPE, YEAR, STATE) Professional Civil Engineer - 2023 Hawaii (PE-20381)			

**PERSONAL HISTORY STATEMENT OF TECHNICAL PERSONNEL WITHIN YOUR FIRM**

NAME <b>SHON, JESSICA</b>		STATUS ( <u>underline</u> ) <b>Full-Time</b> Part-Time	NAME <b>NINOMIYA, MATTHEW</b>		STATUS ( <u>underline</u> ) <b>Full-Time</b> Part-Time
TITLE OR POSITION Assistant Engineer II (civil)		YEARS OF EXPERIENCE 7	TITLE OR POSITION Assistant Engineer II (civil)		YEARS OF EXPERIENCE 5
WITH THIS FIRM 7	WITH LAST FIRM (NAME & NO. OF YEARS) 0	WITH OTHER FIRMS 0	WITH THIS FIRM 5	WITH LAST FIRM (NAME & NO. OF YEARS) 0	WITH OTHER FIRMS 0
EDUCATION (COLLEGE, DEGREE, YEAR, SPECIALIZATION) University of Hawaii at Manoa - B.S., 2017, Civil Engineering			EDUCATION (COLLEGE, DEGREE, YEAR, SPECIALIZATION) University of Hawaii at Manoa - B.S., 2019, Civil Engineering		
REGISTRATION (TYPE, YEAR, STATE) Engineer-in-Training - 2017 Hawaii			REGISTRATION (TYPE, YEAR, STATE) N/A		
NAME <b>CO, CHRISTOPHER</b>		STATUS ( <u>underline</u> ) <b>Full-Time</b> Part-Time	NAME <b>FONG, DYLAN</b>		STATUS ( <u>underline</u> ) <b>Full-Time</b> Part-Time
TITLE OR POSITION Assistant Engineer II (civil)		YEARS OF EXPERIENCE 5	TITLE OR POSITION Assistant Engineer II (civil)		YEARS OF EXPERIENCE 4
WITH THIS FIRM 5	WITH LAST FIRM (NAME & NO. OF YEARS) 0	WITH OTHER FIRMS 0	WITH THIS FIRM 3	WITH LAST FIRM (NAME & NO. OF YEARS) Group 70 (1 yr)	WITH OTHER FIRMS 1
EDUCATION (COLLEGE, DEGREE, YEAR, SPECIALIZATION) University of Hawaii at Manoa - B.S., 2019, Civil Engineering			EDUCATION (COLLEGE, DEGREE, YEAR, SPECIALIZATION) Seattle University - B.S., 2020, Civil Engineering - Environmental Specialty, Minor in Mathematics		
REGISTRATION (TYPE, YEAR, STATE) Engineer-in-Training - 2019 Hawaii			REGISTRATION (TYPE, YEAR, STATE) Engineer-in-Training - 2019 Washington		
NAME <b>REMO, LUIGI</b>		STATUS ( <u>underline</u> ) <b>Full-Time</b> Part-Time	NAME <b>KAMIKAWA, KEENAN</b>		STATUS ( <u>underline</u> ) <b>Full-Time</b> Part-Time
TITLE OR POSITION Assistant Engineer I (civil)		YEARS OF EXPERIENCE 4	TITLE OR POSITION Assistant Engineer I (civil)		YEARS OF EXPERIENCE 2
WITH THIS FIRM 4	WITH LAST FIRM (NAME & NO. OF YEARS) 0	WITH OTHER FIRMS 0	WITH THIS FIRM 2	WITH LAST FIRM (NAME & NO. OF YEARS) 0	WITH OTHER FIRMS 0
EDUCATION (COLLEGE, DEGREE, YEAR, SPECIALIZATION) Loyola Marymount University - B.S., 2020, Civil Engineering			EDUCATION (COLLEGE, DEGREE, YEAR, SPECIALIZATION) Portland State University - B.S., 2022, Civil Engineering		
REGISTRATION (TYPE, YEAR, STATE) N/A			REGISTRATION (TYPE, YEAR, STATE) ASCE		

**PERSONAL HISTORY STATEMENT OF TECHNICAL PERSONNEL WITHIN YOUR FIRM**

NAME <b>YU, ANDREW</b>		STATUS ( <u>underline</u> ) <b>Full-Time</b> Part-Time	NAME <b>WATANABE, ALYSSA</b>		STATUS ( <u>underline</u> ) <b>Full-Time</b> Part-Time
TITLE OR POSITION Assistant Engineer I (civil)		YEARS OF EXPERIENCE 2	TITLE OR POSITION Assistant Engineer I (civil)		YEARS OF EXPERIENCE 1
WITH THIS FIRM 1	WITH LAST FIRM (NAME & NO. OF YEARS) Affiliated Consruction LLC (1 yr)	WITH OTHER FIRMS 1	WITH THIS FIRM 1	WITH LAST FIRM (NAME & NO. OF YEARS) 0	WITH OTHER FIRMS 0
EDUCATION (COLLEGE, DEGREE, YEAR, SPECIALIZATION) University of Hawaii at Manoa - B.S., 2022 Civil Engineering			EDUCATION (COLLEGE, DEGREE, YEAR, SPECIALIZATION) University of Hawaii at Manoa - B.S., 2019, Civil Engineering (Minor in Business Administration)		
REGISTRATION (TYPE, YEAR, STATE) Engineer-in-Training - 2022 Hawaii			REGISTRATION (TYPE, YEAR, STATE) Engineer-in-Training - 2023 Hawaii ASCE, SWE (Society of Women Engineers)		
NAME <b>CHUN, MARRISA</b>		STATUS ( <u>underline</u> ) <b>Full-Time</b> Part-Time	NAME <b>BERNAL, JETT</b>		STATUS ( <u>underline</u> ) <b>Full-Time</b> Part-Time
TITLE OR POSITION Assistant Engineer I (civil)		YEARS OF EXPERIENCE 1	TITLE OR POSITION Assistant Engineer I (civil)		YEARS OF EXPERIENCE 1
WITH THIS FIRM 1	WITH LAST FIRM (NAME & NO. OF YEARS) 0	WITH OTHER FIRMS 0	WITH THIS FIRM 1	WITH LAST FIRM (NAME & NO. OF YEARS) 0	WITH OTHER FIRMS 0
EDUCATION (COLLEGE, DEGREE, YEAR, SPECIALIZATION) University of Hawaii at Manoa - M.S., 2023, Civil Engineering University of Hawaii at Manoa - B.S., 2019, Civil Engineering			EDUCATION (COLLEGE, DEGREE, YEAR, SPECIALIZATION) Brigham Young University - Idaho - B.S., 2024, Civil Engineering		
REGISTRATION (TYPE, YEAR, STATE) Engineer-in-Training - 2023 Hawaii			REGISTRATION (TYPE, YEAR, STATE) Engineer-in-Training - 2024 Idaho Envision™ Sustainability Professional Credential ENV SP - 2023		
NAME <b>APELU, DYLAN</b>		STATUS ( <u>underline</u> ) <b>Full-Time</b> Part-Time	NAME		STATUS ( <u>underline</u> ) Full-Time Part-Time
TITLE OR POSITION Assistant Engineer I (civil)		YEARS OF EXPERIENCE 1	TITLE OR POSITION		YEARS OF EXPERIENCE 0
WITH THIS FIRM <1	WITH LAST FIRM (NAME & NO. OF YEARS) Ardurra/T-O Engineers (1 yr)	WITH OTHER FIRMS 1	WITH THIS FIRM		WITH OTHER FIRMS
EDUCATION (COLLEGE, DEGREE, YEAR, SPECIALIZATION) Brigham Young University - Idaho - B.S., 2023, Civil Engineering			EDUCATION (COLLEGE, DEGREE, YEAR, SPECIALIZATION)		
REGISTRATION (TYPE, YEAR, STATE) Engineer-in-Training - 2021 Utah			REGISTRATION (TYPE, YEAR, STATE)		

## ENGINEERING DEPARTMENT (ENVIRONMENTAL)

### PERSONAL HISTORY STATEMENT OF TECHNICAL PERSONNEL WITHIN YOUR FIRM

<b>NAME</b> <b>NISHIKAWA, JAIME L.M.</b>		<small>STATUS ( underline)</small> <b>Full-Time</b> Part-Time	<b>NAME</b> <b>WONG, TIOW PING</b>		<small>STATUS ( underline)</small> <b>Full-Time</b> Part-Time
<small>TITLE OR POSITION</small> Project Manager (wastewater)		<small>YEARS OF EXPERIENCE</small> 22	<small>TITLE OR POSITION</small> Chief of Wastewater Technology		<small>YEARS OF EXPERIENCE</small> 23
<small>WITH THIS FIRM</small> 22	<small>WITH LAST FIRM (NAME &amp; NO. OF YEARS)</small> 0	<small>WITH OTHER FIRMS</small> 0	<small>WITH THIS FIRM</small> 23	<small>WITH LAST FIRM (NAME &amp; NO. OF YEARS)</small> 0	<small>WITH OTHER FIRMS</small> 0
<small>EDUCATION (COLLEGE, DEGREE, YEAR, SPECIALIZATION)</small> University of Hawaii at Manoa - M.S., 2001, Environmental Engineering Santa Clara University - B.S., 1999, Civil Engineering			<small>EDUCATION (COLLEGE, DEGREE, YEAR, SPECIALIZATION)</small> University of Hawaii at Manoa - M.S., 2001, Environmental Engineering University of Hawaii at Manoa - B.S., 1998, Civil Engineering		
<small>REGISTRATION (TYPE, YEAR, STATE)</small> Professional Civil Engineer - 2004 Hawaii (PE-11115) LEED AP BD+C - 2009 ASCE, WEF			<small>REGISTRATION (TYPE, YEAR, STATE)</small> Professional Civil Engineer - 2005 Hawaii (PE-11465) ASCE, WEF		
<b>NAME</b> <b>MIYASATO, ANN Y.</b>		<small>STATUS ( underline)</small> <b>Full-Time</b> Part-Time	<b>NAME</b> <b>TASAKA, JAYSON C. T.</b>		<small>STATUS ( underline)</small> <b>Full-Time</b> Part-Time
<small>TITLE OR POSITION</small> Project Manager (wastewater)		<small>YEARS OF EXPERIENCE</small> 23	<small>TITLE OR POSITION</small> Senior Engineer (wastewater)		<small>YEARS OF EXPERIENCE</small> 11
<small>WITH THIS FIRM</small> 23	<small>WITH LAST FIRM (NAME &amp; NO. OF YEARS)</small> 0	<small>WITH OTHER FIRMS</small> 0	<small>WITH THIS FIRM</small> 11	<small>WITH LAST FIRM (NAME &amp; NO. OF YEARS)</small> 0	<small>WITH OTHER FIRMS</small> 0
<small>EDUCATION (COLLEGE, DEGREE, YEAR, SPECIALIZATION)</small> University of Notre Dame - M.S., 2001, Civil Engineering University of Hawaii at Manoa - B.S., 1997, Civil Engineering			<small>EDUCATION (COLLEGE, DEGREE, YEAR, SPECIALIZATION)</small> University of Hawaii at Manoa - M.S., 2013, Civil and Environmental Engineering University of Hawaii at Manoa - B.S., 2010, Civil and Environmental Engineering		
<small>REGISTRATION (TYPE, YEAR, STATE)</small> Professional Civil Engineer - 2004 Hawaii (PE-11253); LEED AP - 2009; ASCE, WEF, CMAA, Chi Epsilon; Certified Water Pollution Plan Preparer (City DPP); Certified Erosion and Sediment Control Plan Preparer (City); NASSCO PACP/LACP/MACP			<small>REGISTRATION (TYPE, YEAR, STATE)</small> Professional Civil Engineer - 2016 Hawaii (PE-17285) ASCE, WEF		
<b>NAME</b> <b>IMANAKA, NICOLE</b>		<small>STATUS ( underline)</small> <b>Full-Time</b> Part-Time	<b>NAME</b> <b>TSUCHIDA, TYLER</b>		<small>STATUS ( underline)</small> <b>Full-Time</b> Part-Time
<small>TITLE OR POSITION</small> Engineer (wastewater)		<small>YEARS OF EXPERIENCE</small> 11	<small>TITLE OR POSITION</small> Engineer (wastewater)		<small>YEARS OF EXPERIENCE</small> 8
<small>WITH THIS FIRM</small> 10	<small>WITH LAST FIRM (NAME &amp; NO. OF YEARS)</small> AECOM (1 year)	<small>WITH OTHER FIRMS</small> 1	<small>WITH THIS FIRM</small> 8	<small>WITH LAST FIRM (NAME &amp; NO. OF YEARS)</small> 0	<small>WITH OTHER FIRMS</small> 0
<small>EDUCATION (COLLEGE, DEGREE, YEAR, SPECIALIZATION)</small> Seattle University - B.S., 2012, Civil Engineering			<small>EDUCATION (COLLEGE, DEGREE, YEAR, SPECIALIZATION)</small> University of Hawaii at Manoa - M.S., 2019, Civil and Environmental Engineering University of Hawaii at Manoa - B.S., 2016, Civil Engineering		
<small>REGISTRATION (TYPE, YEAR, STATE)</small> Professional Civil Engineer - 2018 Hawaii (PE-18034) Envision™ Sustainability Professional Credential ENV SP - 2017; ASCE; Certified Erosion and Sediment Control Plan Preparer (City); Certified Water Pollution Plan Preparer (City)			<small>REGISTRATION (TYPE, YEAR, STATE)</small> Professional Civil Engineer - 2019 Hawaii (PE-18869) WEF; Chi Epsilon; Certified Erosion and Sediment Control Plan Preparer (City)		

# ENGINEERING DEPARTMENT (ENVIRONMENTAL)

## PERSONAL HISTORY STATEMENT OF TECHNICAL PERSONNEL WITHIN YOUR FIRM

<b>NAME</b> <b>ICHIKAWA, CHELSEA</b>		<small>STATUS ( underline)</small> <b>Full-Time</b> Part-Time	<b>NAME</b> <b>ASPER, JOSHUA</b>		<small>STATUS ( underline)</small> <b>Full-Time</b> Part-Time
<small>TITLE OR POSITION</small> Engineer (wastewater)		<small>YEARS OF EXPERIENCE</small> 9	<small>TITLE OR POSITION</small> Engineer (wastewater)		<small>YEARS OF EXPERIENCE</small> 5
<small>WITH THIS FIRM</small> 9	<small>WITH LAST FIRM (NAME &amp; NO. OF YEARS)</small> 0	<small>WITH OTHER FIRMS</small> 0	<small>WITH THIS FIRM</small> 5	<small>WITH LAST FIRM (NAME &amp; NO. OF YEARS)</small> 0	<small>WITH OTHER FIRMS</small> 0
<small>EDUCATION (COLLEGE, DEGREE, YEAR, SPECIALIZATION)</small> Oregon State University - B.S., 2014, Environmental Engineering			<small>EDUCATION (COLLEGE, DEGREE, YEAR, SPECIALIZATION)</small> University of Hawaii at Manoa - B.S., 2020, Civil Engineering		
<small>REGISTRATION (TYPE, YEAR, STATE)</small> Professional Civil Engineer - 2021 Hawaii (PE-19465) ASCE; Erosion and Sediment Control Plan Coordinator (City)			<small>REGISTRATION (TYPE, YEAR, STATE)</small> Professional Engineer - 2024 Hawaii (PE-20719) Certified Erosion and Sediment Control Plan Preparer (City); Erosion and Sediment Control Plan Coordinator (City DPP)		
<b>NAME</b> <b>SUDA, JONATHAN</b>		<small>STATUS ( underline)</small> <b>Full-Time</b> Part-Time	<b>NAME</b> <b>LEE, SHELDON K.</b>		<small>STATUS ( underline)</small> <b>Full-Time</b> Part-Time
<small>TITLE OR POSITION</small> Assistant Engineer II (wastewater)		<small>YEARS OF EXPERIENCE</small> 5	<small>TITLE OR POSITION</small> Assistant Engineer I (wastewater)		<small>YEARS OF EXPERIENCE</small> 4
<small>WITH THIS FIRM</small> 5	<small>WITH LAST FIRM (NAME &amp; NO. OF YEARS)</small> 0	<small>WITH OTHER FIRMS</small> 0	<small>WITH THIS FIRM</small> 4	<small>WITH LAST FIRM (NAME &amp; NO. OF YEARS)</small> 0	<small>WITH OTHER FIRMS</small> 0
<small>EDUCATION (COLLEGE, DEGREE, YEAR, SPECIALIZATION)</small> University of Hawaii at Manoa - B.S., 2019, Biological Engineering			<small>EDUCATION (COLLEGE, DEGREE, YEAR, SPECIALIZATION)</small> Oregon State University - B.S., 2020, Environmental Engineering, Minor in Chemistry		
<small>REGISTRATION (TYPE, YEAR, STATE)</small> Engineer-in-Training - 2019 Hawaii			<small>REGISTRATION (TYPE, YEAR, STATE)</small> N/A		
<b>NAME</b> <b>WASHINO, STEVEN</b>		<small>STATUS ( underline)</small> <b>Full-Time</b> Part-Time	<b>NAME</b> <b>KAGAMIDA, CONNOR</b>		<small>STATUS ( underline)</small> <b>Full-Time</b> Part-Time
<small>TITLE OR POSITION</small> Assistant Engineer I (wastewater)		<small>YEARS OF EXPERIENCE</small> 4	<small>TITLE OR POSITION</small> Assistant Engineer I (wastewater)		<small>YEARS OF EXPERIENCE</small> 3
<small>WITH THIS FIRM</small> 4	<small>WITH LAST FIRM (NAME &amp; NO. OF YEARS)</small> 0	<small>WITH OTHER FIRMS</small> 0	<small>WITH THIS FIRM</small> 3	<small>WITH LAST FIRM (NAME &amp; NO. OF YEARS)</small> 0	<small>WITH OTHER FIRMS</small> 0
<small>EDUCATION (COLLEGE, DEGREE, YEAR, SPECIALIZATION)</small> University of Hawaii at Manoa - B.S., 2020, Civil and Environmental Engineering Kapiolani Community College - A.S., 2018, Pre-Engineering and Natural Sciences			<small>EDUCATION (COLLEGE, DEGREE, YEAR, SPECIALIZATION)</small> University of Hawaii at Manoa - M.S., 2022, Civil Engineering University of Hawaii at Manoa - B.S., 2021, Civil Engineering		
<small>REGISTRATION (TYPE, YEAR, STATE)</small> Engineer-in-Training - 2020 Hawaii			<small>REGISTRATION (TYPE, YEAR, STATE)</small> Engineer-in-Training - 2021 Hawaii Envision™ Sustainability Professional Credential ENV SP - 2020 Chi Epsilon, Institute of Transportation Engineers		

## ENGINEERING DEPARTMENT (ENVIRONMENTAL)

### PERSONAL HISTORY STATEMENT OF TECHNICAL PERSONNEL WITHIN YOUR FIRM

<b>NAME</b> <b>ANCHETA, JACEN</b>			<b>STATUS ( underline)</b> <b><u>Full-Time</u> Part-Time</b>		<b>NAME</b> <b>FONG, SHUI YEE</b>			<b>STATUS ( underline)</b> <b><u>Full-Time</u> Part-Time</b>	
<b>TITLE OR POSITION</b> Assistant Engineer I (wastewater)			<b>YEARS OF EXPERIENCE</b> 2		<b>TITLE OR POSITION</b> Draftsman / CADD Technician (wastewater)			<b>YEARS OF EXPERIENCE</b> 30	
<b>WITH THIS FIRM</b> 2	<b>WITH LAST FIRM (NAME &amp; NO. OF YEARS)</b> 0		<b>WITH OTHER FIRMS</b> 0		<b>WITH THIS FIRM</b> 30	<b>WITH LAST FIRM (NAME &amp; NO. OF YEARS)</b> 0		<b>WITH OTHER FIRMS</b> 0	
<b>EDUCATION (COLLEGE, DEGREE, YEAR, SPECIALIZATION)</b> University of Hawaii at Manoa - M.S., 2023, Civil Engineering University of Hawaii at Manoa - B.S., 2022, Civil Engineering					<b>EDUCATION (COLLEGE, DEGREE, YEAR, SPECIALIZATION)</b> Honolulu Community College - A.S., 1988, Architectural Drafting				
<b>REGISTRATION (TYPE, YEAR, STATE)</b> Engineer-in-Training - 2023 Hawaii					<b>REGISTRATION (TYPE, YEAR, STATE)</b> N/A				
<b>NAME</b> <b>TSUTSUI, BLAKE</b>			<b>STATUS ( underline)</b> <b><u>Full-Time</u> Part-Time</b>		<b>NAME</b>			<b>STATUS ( underline)</b> <b><u>Full-Time</u> Part-Time</b>	
<b>TITLE OR POSITION</b> Design Visualization Artist			<b>YEARS OF EXPERIENCE</b> 11		<b>TITLE OR POSITION</b>			<b>YEARS OF EXPERIENCE</b> 0	
<b>WITH THIS FIRM</b> 4	<b>WITH LAST FIRM (NAME &amp; NO. OF YEARS)</b> Freelance (7 yrs)		<b>WITH OTHER FIRMS</b> 7		<b>WITH THIS FIRM</b>	<b>WITH LAST FIRM (NAME &amp; NO. OF YEARS)</b>		<b>WITH OTHER FIRMS</b>	
<b>EDUCATION (COLLEGE, DEGREE, YEAR, SPECIALIZATION)</b> The Art Institute of California Los Angeles - A.S., 2013, Graphic Design					<b>EDUCATION (COLLEGE, DEGREE, YEAR, SPECIALIZATION)</b>				
<b>REGISTRATION (TYPE, YEAR, STATE)</b> N/A					<b>REGISTRATION (TYPE, YEAR, STATE)</b>				

**PERSONAL HISTORY STATEMENT OF TECHNICAL PERSONNEL WITHIN YOUR FIRM**

NAME <b>TAKEDA, BRIAN A.</b>			STATUS ( <u>underline</u> ) <b>Full-Time</b> Part-Time	NAME <b>NIERMANN, JAMES A.</b>			STATUS ( <u>underline</u> ) <b>Full-Time</b> Part-Time
TITLE OR POSITION Project Manager (Planning)			YEARS OF EXPERIENCE 38	TITLE OR POSITION Project Coordinator (Planning)			YEARS OF EXPERIENCE 28
WITH THIS FIRM 33	WITH LAST FIRM (NAME & NO. OF YEARS) State of Hawaii, Office of State Planning (5 yrs)		WITH OTHER FIRMS 5	WITH THIS FIRM 26	WITH LAST FIRM (NAME & NO. OF YEARS) Waianae Coast Community Alternatives (1 yr)		WITH OTHER FIRMS 2
EDUCATION (COLLEGE, DEGREE, YEAR, SPECIALIZATION) University of Hawaii at Manoa - M.U.R.P., 1987, Urban and Regional Planning University of Hawaii at Manoa - B.A., 1978, Sociology				EDUCATION (COLLEGE, DEGREE, YEAR, SPECIALIZATION) University of Hawaii at Manoa - M.U.R.P., 1996, Urban and Regional Planning Johns Hopkins Nanjing University - Graduate Certificate, 1992 University of California at Santa Barbara - B.A., 1990, Asian Studies			
REGISTRATION (TYPE, YEAR, STATE) APA, ASCE, AWWA				REGISTRATION (TYPE, YEAR, STATE) American Institute of Certified Planners - 2003 LEED AP BD+C - 2009 APWA			
NAME <b>STAPLES, KELLY</b>			STATUS ( <u>underline</u> ) <b>Full-Time</b> Part-Time	NAME <b>LEE, ROXANNE</b>			STATUS ( <u>underline</u> ) <b>Full-Time</b> Part-Time
TITLE OR POSITION Senior Planner			YEARS OF EXPERIENCE 13	TITLE OR POSITION Planner			YEARS OF EXPERIENCE 9
WITH THIS FIRM 11	WITH LAST FIRM (NAME & NO. OF YEARS) University of Hawaii (1 yr)		WITH OTHER FIRMS 2	WITH THIS FIRM 6	WITH LAST FIRM (NAME & NO. OF YEARS) Queen Liliuokalani Trust (1 yr)		WITH OTHER FIRMS 3
EDUCATION (COLLEGE, DEGREE, YEAR, SPECIALIZATION) University of Hawaii at Manoa - M.S., 2013, Natural Resources & Environmental Mgmt California State University, Bakersfield - B.S., 2011, Environmental Resource Mgmt University of California at Santa Barbara - B.S., 2007, Biological Sciences				EDUCATION (COLLEGE, DEGREE, YEAR, SPECIALIZATION) University of Washington - M.L.A., 2016, Landscape Architecture University of California, San Diego - B.A., 2009, Visual Arts and Environmental Studies			
REGISTRATION (TYPE, YEAR, STATE) APA, APWA				REGISTRATION (TYPE, YEAR, STATE) American Institute of Certified Planners - 2023 American Society of Landscape Architects LEED GA			
NAME <b>SATO, ISAIHAH</b>			STATUS ( <u>underline</u> ) <b>Full-Time</b> Part-Time	NAME <b>MARCHANT, MICHELLE J.</b>			STATUS ( <u>underline</u> ) <b>Full-Time</b> Part-Time
TITLE OR POSITION Assistant Planner II			YEARS OF EXPERIENCE 9	TITLE OR POSITION Assistant Planner II			YEARS OF EXPERIENCE 7
WITH THIS FIRM 9	WITH LAST FIRM (NAME & NO. OF YEARS) 0		WITH OTHER FIRMS 0	WITH THIS FIRM 6	WITH LAST FIRM (NAME & NO. OF YEARS) Spin 5-0 (1 yr)		WITH OTHER FIRMS 1
EDUCATION (COLLEGE, DEGREE, YEAR, SPECIALIZATION) University of Hawaii at Manoa - B.S., 2015, Civil Engineering				EDUCATION (COLLEGE, DEGREE, YEAR, SPECIALIZATION) University of Hawaii at Manoa - B.S., 2017, Global Environmental Science and Psychology			
REGISTRATION (TYPE, YEAR, STATE) Professional Civil Engineer - 2019 Hawaii (PE-18871)				REGISTRATION (TYPE, YEAR, STATE) N/A			

**PERSONAL HISTORY STATEMENT OF TECHNICAL PERSONNEL WITHIN YOUR FIRM**

NAME <b>HARRISON, ALEC</b>		STATUS ( underline) <u>Full-Time</u> Part-Time	NAME <b>EATON, ALENA</b>		STATUS ( underline) <u>Full-Time</u> Part-Time
TITLE OR POSITION Assistant Planner II		YEARS OF EXPERIENCE 6	TITLE OR POSITION Assistant Planner I		YEARS OF EXPERIENCE 3
WITH THIS FIRM 5	WITH LAST FIRM (NAME & NO. OF YEARS) City of Boise (1 yr)	WITH OTHER FIRMS 1	WITH THIS FIRM 2	WITH LAST FIRM (NAME & NO. OF YEARS) Self Employed (1 yr)	WITH OTHER FIRMS 1
EDUCATION (COLLEGE, DEGREE, YEAR, SPECIALIZATION) Colorado State University - M.S., 2019, Natural Resource Management University of Idaho - B.S., 2016, Biological and Agricultural Engineering			EDUCATION (COLLEGE, DEGREE, YEAR, SPECIALIZATION) Southern Oregon University - B.S., 2016, Environmental Studies, Minor in Outdoor Adventure Leadership, Certificate in Sustainable Leadership		
REGISTRATION (TYPE, YEAR, STATE) N/A			REGISTRATION (TYPE, YEAR, STATE) Scuba, Open Water Certified		

**PERSONAL HISTORY STATEMENT OF TECHNICAL PERSONNEL WITHIN YOUR FIRM**

NAME			STATUS ( <u>underline</u> )		
<b>SUZUKI, RYAN M.</b>			<b>Full-Time</b> Part-Time		
TITLE OR POSITION			YEARS OF EXPERIENCE		
Project Manager (surveying)			29		
WITH THIS FIRM	WITH LAST FIRM (NAME & NO. OF YEARS)	WITH OTHER FIRMS			
29	0	0			
EDUCATION (COLLEGE, DEGREE, YEAR, SPECIALIZATION)					
University of Hawaii at Manoa - B.S., 1994, Civil Engineering					
REGISTRATION (TYPE, YEAR, STATE)					
Licensed Land Court Surveyor - 2001 Hawaii (LC-280) Licensed Land Surveyor - 2000 Hawaii (LS-10059) Engineer-in-Training (EIT) - 1994 Hawaii; HSLA					
NAME			STATUS ( <u>underline</u> )		
<b>BUMANGLAG, AL-GREG</b>			<b>Full-Time</b> Part-Time		
TITLE OR POSITION			YEARS OF EXPERIENCE		
Surveyor			40		
WITH THIS FIRM	WITH LAST FIRM (NAME & NO. OF YEARS)	WITH OTHER FIRMS			
20	Control Point (20 yrs)	20			
EDUCATION (COLLEGE, DEGREE, YEAR, SPECIALIZATION)					
N/A					
REGISTRATION (TYPE, YEAR, STATE)					
N/A					
NAME			STATUS ( <u>underline</u> )		
<b>VALDEZ, BENJAMIN M.</b>			<b>Full-Time</b> Part-Time		
TITLE OR POSITION			YEARS OF EXPERIENCE		
Party Chief / Photogrammetrist (surveying)			37		
WITH THIS FIRM	WITH LAST FIRM (NAME & NO. OF YEARS)	WITH OTHER FIRMS			
33	National Mapping/Resource Info Authority, Ft. Bonifacio, PI (2 yrs)	4			
EDUCATION (COLLEGE, DEGREE, YEAR, SPECIALIZATION)					
University of the Philippines - Diploma Course, 1991, Applied Geodesy and Photogrammetry Baguio College Foundation - B.S., 1985, Civil Engineering					
REGISTRATION (TYPE, YEAR, STATE)					
Licensed Land Surveyor - 2010 Hawaii (LS-14022) HSLA					
NAME			STATUS ( <u>underline</u> )		
<b>GONZALES, DONNA</b>			<b>Full-Time</b> Part-Time		
TITLE OR POSITION			YEARS OF EXPERIENCE		
Surveyor			11		
WITH THIS FIRM	WITH LAST FIRM (NAME & NO. OF YEARS)	WITH OTHER FIRMS			
11	0	0			
EDUCATION (COLLEGE, DEGREE, YEAR, SPECIALIZATION)					
University of Hawaii at Manoa - B.S., 2013, Civil Engineering					
REGISTRATION (TYPE, YEAR, STATE)					
Licensed Land Surveyor - 2023 Hawaii (LS-20178) HSLA					
NAME			STATUS ( <u>underline</u> )		
<b>TOBA, DANIEL H.</b>			<b>Full-Time</b> Part-Time		
TITLE OR POSITION			YEARS OF EXPERIENCE		
Assistant Surveyor II (surveying)			18		
WITH THIS FIRM	WITH LAST FIRM (NAME & NO. OF YEARS)	WITH OTHER FIRMS			
18	0	0			
EDUCATION (COLLEGE, DEGREE, YEAR, SPECIALIZATION)					
University of Hawaii at Manoa - B.S., 2006, Civil Engineering					
REGISTRATION (TYPE, YEAR, STATE)					
Engineer-in-Training - 2006 Hawaii HSLA					
NAME			STATUS ( <u>underline</u> )		
<b>MASHIYAMA, NATHAN</b>			<b>Full-Time</b> Part-Time		
TITLE OR POSITION			YEARS OF EXPERIENCE		
Assistant Surveyor I			3		
WITH THIS FIRM	WITH LAST FIRM (NAME & NO. OF YEARS)	WITH OTHER FIRMS			
3	0	0			
EDUCATION (COLLEGE, DEGREE, YEAR, SPECIALIZATION)					
University of Hawaii at Manoa - B.S., 2021, Civil Engineering					
REGISTRATION (TYPE, YEAR, STATE)					
Engineer-in-Training - 2021 Hawaii					

**PERSONAL HISTORY STATEMENT OF TECHNICAL PERSONNEL WITHIN YOUR FIRM**

NAME <b>DUROPAN, WALTER</b>			STATUS ( <u>underline</u> ) <u>Full-Time</u> Part-Time	NAME <b>NIVERA, BENJAMIN N.</b>			STATUS ( <u>underline</u> ) <u>Full-Time</u> Part-Time
TITLE OR POSITION Party Chief (surveying)			YEARS OF EXPERIENCE 28	TITLE OR POSITION Party Chief (surveying)			YEARS OF EXPERIENCE 24
WITH THIS FIRM <1	WITH LAST FIRM (NAME & NO. OF YEARS) Control Point (28 yrs)		WITH OTHER FIRMS 28	WITH THIS FIRM 1	WITH LAST FIRM (NAME & NO. OF YEARS) Control Point (23 yrs)		WITH OTHER FIRMS 23
EDUCATION (COLLEGE, DEGREE, YEAR, SPECIALIZATION) N/A				EDUCATION (COLLEGE, DEGREE, YEAR, SPECIALIZATION) N/A			
REGISTRATION (TYPE, YEAR, STATE) N/A				REGISTRATION (TYPE, YEAR, STATE) N/A			
NAME <b>SISON, NORWIN</b>			STATUS ( <u>underline</u> ) <u>Full-Time</u> Part-Time	NAME <b>ROCIMO, MEDARDO</b>			STATUS ( <u>underline</u> ) <u>Full-Time</u> Part-Time
TITLE OR POSITION Party Chief (surveying)			YEARS OF EXPERIENCE 21	TITLE OR POSITION Survey Technician			YEARS OF EXPERIENCE 17
WITH THIS FIRM 2	WITH LAST FIRM (NAME & NO. OF YEARS) Alcon & Associates / CM&E Engineering (15 yrs)		WITH OTHER FIRMS 19	WITH THIS FIRM 17	WITH LAST FIRM (NAME & NO. OF YEARS) 0		WITH OTHER FIRMS 0
EDUCATION (COLLEGE, DEGREE, YEAR, SPECIALIZATION) University of Cordilleras - B.S., 1987, Civil Engineering				EDUCATION (COLLEGE, DEGREE, YEAR, SPECIALIZATION) N/A			
REGISTRATION (TYPE, YEAR, STATE) N/A				REGISTRATION (TYPE, YEAR, STATE) N/A			
NAME <b>BONILLA, FLORENDO</b>			STATUS ( <u>underline</u> ) <u>Full-Time</u> Part-Time	NAME <b>BALTAZAR, MISADEGALLO</b>			STATUS ( <u>underline</u> ) <u>Full-Time</u> Part-Time
TITLE OR POSITION Survey Technician			YEARS OF EXPERIENCE 11	TITLE OR POSITION Survey Technician			YEARS OF EXPERIENCE 3
WITH THIS FIRM 11	WITH LAST FIRM (NAME & NO. OF YEARS) 0		WITH OTHER FIRMS 0	WITH THIS FIRM 3	WITH LAST FIRM (NAME & NO. OF YEARS) 0		WITH OTHER FIRMS 0
EDUCATION (COLLEGE, DEGREE, YEAR, SPECIALIZATION) N/A				EDUCATION (COLLEGE, DEGREE, YEAR, SPECIALIZATION) N/A			
REGISTRATION (TYPE, YEAR, STATE) N/A				REGISTRATION (TYPE, YEAR, STATE) N/A			

**PERSONAL HISTORY STATEMENT OF TECHNICAL PERSONNEL WITHIN YOUR FIRM**

NAME <b>BUMANGLAG, JASPER</b>		STATUS ( underline) <u>Full-Time</u> Part-Time	NAME <b>MINAMI, KENNETH Y.</b>		STATUS ( underline) Full-Time <u>Part-Time</u>
TITLE OR POSITION Survey Technician		YEARS OF EXPERIENCE 2	TITLE OR POSITION Cartographer (surveying)		YEARS OF EXPERIENCE 46
WITH THIS FIRM 2	WITH LAST FIRM (NAME & NO. OF YEARS) 0	WITH OTHER FIRMS 0	WITH THIS FIRM 38	WITH LAST FIRM (NAME & NO. OF YEARS) HMSA (8 yrs)	WITH OTHER FIRMS 8
EDUCATION (COLLEGE, DEGREE, YEAR, SPECIALIZATION) N/A			EDUCATION (COLLEGE, DEGREE, YEAR, SPECIALIZATION) University of Hawaii at Manoa - B.S., 1969, Meteorology		
REGISTRATION (TYPE, YEAR, STATE) N/A			REGISTRATION (TYPE, YEAR, STATE) N/A		

# CONSTRUCTION MANAGEMENT DEPARTMENT

## PERSONAL HISTORY STATEMENT OF TECHNICAL PERSONNEL WITHIN YOUR FIRM

<b>YEE, LYDIA S.</b>			STATUS ( <u>underline</u> ) <b>Full-Time</b> Part-Time	<b>HEE, GREGORY P.</b>			STATUS ( <u>underline</u> ) <b>Full-Time</b> Part-Time
TITLE OR POSITION <b>Construction Manager</b>			YEARS OF EXPERIENCE <b>35</b>	TITLE OR POSITION <b>Construction Manager</b>			YEARS OF EXPERIENCE <b>48</b>
WITH THIS FIRM <b>34</b>	WITH LAST FIRM (NAME & NO. OF YEARS) <b>Environet, Inc. (1 yr)</b>		WITH OTHER FIRMS <b>1</b>	WITH THIS FIRM <b>4</b>	WITH LAST FIRM (NAME & NO. OF YEARS) <b>City and County of Honolulu (38 yrs)</b>		WITH OTHER FIRMS <b>44</b>
EDUCATION (COLLEGE, DEGREE, YEAR, SPECIALIZATION) <b>University of Hawaii at Manoa - B.S., 1989, Civil Engineering</b>				EDUCATION (COLLEGE, DEGREE, YEAR, SPECIALIZATION) <b>University of Washington - Masters of Architecture, 1976 University of Washington - B.A., 1973, Environmental Design</b>			
REGISTRATION (TYPE, YEAR, STATE) <b>Professional Civil Engineer - 1994 Hawaii (PE-8291); Certified Construction Manager; CMAA; ASCE; Traffic Control Tech; CIPP Installation Inspection; Construction Quality Mgmt for Contractors; Pervious Concrete Tech; OSHA; NASSCO PACP/LACP/MACP; ESCP Coord.</b>				REGISTRATION (TYPE, YEAR, STATE) <b>Registered Architect - 1978 Hawaii (RA-4460)</b>			
<b>TAKAHASHI, GARY M.</b>			STATUS ( <u>underline</u> ) <b>Full-Time</b> Part-Time	<b>YAMASHITA, LAMBERT</b>			STATUS ( <u>underline</u> ) <b>Full-Time</b> Part-Time
TITLE OR POSITION <b>Construction Manager</b>			YEARS OF EXPERIENCE <b>35</b>	TITLE OR POSITION <b>Construction Manager</b>			YEARS OF EXPERIENCE <b>42</b>
WITH THIS FIRM <b>35</b>	WITH LAST FIRM (NAME & NO. OF YEARS) <b>0</b>		WITH OTHER FIRMS <b>0</b>	WITH THIS FIRM <b>4</b>	WITH LAST FIRM (NAME & NO. OF YEARS) <b>AECOM (9 yrs)</b>		WITH OTHER FIRMS <b>38</b>
EDUCATION (COLLEGE, DEGREE, YEAR, SPECIALIZATION) <b>University of Hawaii at Manoa - B.S., 1989, Civil Engineering Honolulu Community College - Attended 1981-86, Engineering Technology</b>				EDUCATION (COLLEGE, DEGREE, YEAR, SPECIALIZATION) <b>University of Hawaii at Manoa - B.S., 1979, Civil Engineering University of Hawaii at Manoa - B.S., 1974, Biology University of Hawaii at Manoa - B.S., 1974, Zoology</b>			
REGISTRATION (TYPE, YEAR, STATE) <b>Professional Civil Engineer - 1995 Hawaii (PE-8689); CMAA; Pervious Concrete Technician; Construction Quality Management for Contractors; OSHA 10-hour; Storm Water BMP; City NPDES MS4; Fall Protection; ACE Safety Mgmt Systems; ACE SMS; ESCP Coord.</b>				REGISTRATION (TYPE, YEAR, STATE) <b>Professional Civil Engineer - 1983 Hawaii (PE-5492); Professional Civil Engineer - 1990 Commonwealth of the Northern Mariana Islands (#103); NPDES MS4; Erosion and Sediment Control Plan Preparer and Coordinator; Certified Water Pollution Plan Preparer</b>			
<b>CARPENTER, DARREN H.</b>			STATUS ( <u>underline</u> ) <b>Full-Time</b> Part-Time	<b>REYES, JAN K.</b>			STATUS ( <u>underline</u> ) <b>Full-Time</b> Part-Time
TITLE OR POSITION <b>Construction Manager</b>			YEARS OF EXPERIENCE <b>38</b>	TITLE OR POSITION <b>Construction Manager</b>			YEARS OF EXPERIENCE <b>22</b>
WITH THIS FIRM <b>3</b>	WITH LAST FIRM (NAME & NO. OF YEARS) <b>US Army Corps of Engineers (29 yrs)</b>		WITH OTHER FIRMS <b>35</b>	WITH THIS FIRM <b>3</b>	WITH LAST FIRM (NAME & NO. OF YEARS) <b>Fluid Technologies, Inc. (2 yrs)</b>		WITH OTHER FIRMS <b>19</b>
EDUCATION (COLLEGE, DEGREE, YEAR, SPECIALIZATION) <b>University of Phoenix, APO, Armed Forces Pacific - Master of Management, 2006 University of Hawaii at Manoa - B.S., 1986, Civil Engineering</b>				EDUCATION (COLLEGE, DEGREE, YEAR, SPECIALIZATION) <b>University of Hawaii at Manoa - B.S., 2002, Biosystems Engineering</b>			
REGISTRATION (TYPE, YEAR, STATE) <b>Professional Civil Engineer - 1992 Hawaii (PE-7686); USACE Leadership Program Level III, Formal Source Selection, Supervisory Development Training, Construction Contract Admin, Design-Build Construction; Various DAWIA Training; Excavation; ESCP Coordinator</b>				REGISTRATION (TYPE, YEAR, STATE) <b>NASSCO PACP/MACP/LACP, Confined Space Competent Person for Construction, General Industry, and Shipyards; Erosion and Sediment Control Plan Coordinator</b>			

# CONSTRUCTION MANAGEMENT DEPARTMENT

## PERSONAL HISTORY STATEMENT OF TECHNICAL PERSONNEL WITHIN YOUR FIRM

<b>NAME</b> <b>HONG, MICHAEL S.H.</b>			<b>STATUS ( underline)</b> <b>Full-Time</b> Part-Time	<b>NAME</b> <b>YAMASHITA, DIANA</b>			<b>STATUS ( underline)</b> <b>Full-Time</b> Part-Time
<b>TITLE OR POSITION</b> Construction Engineer			<b>YEARS OF EXPERIENCE</b> 19	<b>TITLE OR POSITION</b> Construction Engineer			<b>YEARS OF EXPERIENCE</b> 14
<b>WITH THIS FIRM</b> 19	<b>WITH LAST FIRM (NAME &amp; NO. OF YEARS)</b> 0		<b>WITH OTHER FIRMS</b> 0	<b>WITH THIS FIRM</b> 14		<b>WITH LAST FIRM (NAME &amp; NO. OF YEARS)</b> 0	<b>WITH OTHER FIRMS</b> 0
<b>EDUCATION (COLLEGE, DEGREE, YEAR, SPECIALIZATION)</b> University of Hawaii at Manoa - B.S., 2005, Mechanical Engineering				<b>EDUCATION (COLLEGE, DEGREE, YEAR, SPECIALIZATION)</b> University of Hawaii at Manoa - B.S., 2010, Civil Engineering			
<b>REGISTRATION (TYPE, YEAR, STATE)</b> Professional Civil Engineer - 2011 Hawaii (PE-14761); Certified Construction Manager-2021; CMAA; OSHA 10-hr; Field Sampling&Testing; StormWater BMP; CIPP; ACI Concrete Tech; ACI Concrete Inspector; PACP/LACP/MACP; City NPDES MS4				<b>REGISTRATION (TYPE, YEAR, STATE)</b> Professional Civil Engineer - 2015 Hawaii (PE-16555); ASCE; Certified Water Pollution Plan Preparer (City); Erosion and Sediment Control Plan Coordinator (City); Scaffold Awareness (BIA); NPDES MS4, StormWater BMPs			
<b>NAME</b> <b>KARLSON, MICHAEL R.</b>			<b>STATUS ( underline)</b> <b>Full-Time</b> Part-Time	<b>NAME</b> <b>KAICHI, EVAN W.</b>			<b>STATUS ( underline)</b> <b>Full-Time</b> Part-Time
<b>TITLE OR POSITION</b> Construction Engineer			<b>YEARS OF EXPERIENCE</b> 14	<b>TITLE OR POSITION</b> Construction Engineer			<b>YEARS OF EXPERIENCE</b> 8
<b>WITH THIS FIRM</b> 10	<b>WITH LAST FIRM (NAME &amp; NO. OF YEARS)</b> MGE Underground (1 yr)		<b>WITH OTHER FIRMS</b> 4	<b>WITH THIS FIRM</b> 8		<b>WITH LAST FIRM (NAME &amp; NO. OF YEARS)</b> 0	<b>WITH OTHER FIRMS</b> 0
<b>EDUCATION (COLLEGE, DEGREE, YEAR, SPECIALIZATION)</b> University of Hawaii at Manoa - B.S., 2010, Civil Engineering				<b>EDUCATION (COLLEGE, DEGREE, YEAR, SPECIALIZATION)</b> Northern Arizona University - B.S., 2016, Civil Engineering			
<b>REGISTRATION (TYPE, YEAR, STATE)</b> Engineer-in-Training - 2010 Hawaii; Field Sampling & Testing; Storm Water BMPs; Traffic Control Tech; NASSCO PACP/LACP/MACP; Confined Space; Concrete Testing; Excavation & Trenching; CIPP; NPDES MS4; Airport Safety Mgmt; CPM Scheduling; ESCP Coord.				<b>REGISTRATION (TYPE, YEAR, STATE)</b> Professional Civil Engineer - 2023 Hawaii (PE-20189) ASCE, ITE; Field Sampling & Testing; Concrete Fundamentals Master Cert.; City NPDES MS4 Annual Training; OSHA 10-hr; Erosion and Sediment Control Plan Coordinator			
<b>NAME</b> <b>HARAGUCHI, TARYN A.</b>			<b>STATUS ( underline)</b> <b>Full-Time</b> Part-Time	<b>NAME</b> <b>ESTABILIO, BRYCE</b>			<b>STATUS ( underline)</b> <b>Full-Time</b> Part-Time
<b>TITLE OR POSITION</b> Construction Engineer			<b>YEARS OF EXPERIENCE</b> 8	<b>TITLE OR POSITION</b> Construction Engineer			<b>YEARS OF EXPERIENCE</b> 8
<b>WITH THIS FIRM</b> 8	<b>WITH LAST FIRM (NAME &amp; NO. OF YEARS)</b> 0		<b>WITH OTHER FIRMS</b> 0	<b>WITH THIS FIRM</b> 8		<b>WITH LAST FIRM (NAME &amp; NO. OF YEARS)</b> 0	<b>WITH OTHER FIRMS</b> 0
<b>EDUCATION (COLLEGE, DEGREE, YEAR, SPECIALIZATION)</b> Oregon State University - B.S., 2016, Construction Engineering Management				<b>EDUCATION (COLLEGE, DEGREE, YEAR, SPECIALIZATION)</b> University of Hawaii at Manoa - B.S., 2017, Civil Engineering			
<b>REGISTRATION (TYPE, YEAR, STATE)</b> Engineer-in-Training - 2016 Oregon Field Sampling & Testing; ACI - Concrete Testing; City NPDES MS4 Annual Training; PACP/MACP/LACP; OSHA 10-hour; Fall Protection; StormWater BMPs; ESCP Coord.				<b>REGISTRATION (TYPE, YEAR, STATE)</b> ASCE, ITE, Certified Inspector of Sediment & Erosion Control, Field Sampling & Testing, Concrete Fundamentals-Master Certificate, ACI Concrete Field Testing Tech - Grade I; OSHA 10-hour; NPDES MS4; StormWater BMPs; Erosion & Sediment Control Plan Coord.			

# CONSTRUCTION MANAGEMENT DEPARTMENT

## PERSONAL HISTORY STATEMENT OF TECHNICAL PERSONNEL WITHIN YOUR FIRM

<b>SAKO, RYNE</b>		STATUS ( <u>underline</u> ) <b>Full-Time</b> Part-Time	<b>ESTABILIO, KERRI</b>		STATUS ( <u>underline</u> ) <b>Full-Time</b> Part-Time
TITLE OR POSITION <b>Construction Engineer</b>		YEARS OF EXPERIENCE <b>4</b>	TITLE OR POSITION <b>Construction Engineer</b>		YEARS OF EXPERIENCE <b>4</b>
WITH THIS FIRM <b>4</b>	WITH LAST FIRM (NAME & NO. OF YEARS) <b>0</b>	WITH OTHER FIRMS <b>0</b>	WITH THIS FIRM <b>4</b>	WITH LAST FIRM (NAME & NO. OF YEARS) <b>0</b>	WITH OTHER FIRMS <b>0</b>
EDUCATION (COLLEGE, DEGREE, YEAR, SPECIALIZATION) University of Hawaii at Manoa - B.S., 2020, Civil Engineering			EDUCATION (COLLEGE, DEGREE, YEAR, SPECIALIZATION) University of Hawaii at Manoa - B.S., 2020, Civil Engineering		
REGISTRATION (TYPE, YEAR, STATE) Engineer-in-Training - 2021 Hawaii ASCE, Chi Epsilon, NPDES MS4, Excavation & Trenching, ACI Concrete Anchor Inspector; NASSCO PACP/LACP/MACP; Erosion and Sediment Control Plan Coordinator			REGISTRATION (TYPE, YEAR, STATE) Engineer-in-Training - 2021 Hawaii City NPDES MS4 Annual Training, PACP-NASSCO, Excavation & Trenching; Erosion and Sediment Control Plan Coordinator		
<b>HO, REGINALD</b>		STATUS ( <u>underline</u> ) <b>Full-Time</b> Part-Time	<b>CURNAN, DANIEL</b>		STATUS ( <u>underline</u> ) <b>Full-Time</b> Part-Time
TITLE OR POSITION <b>Construction Inspector</b>		YEARS OF EXPERIENCE <b>52</b>	TITLE OR POSITION <b>Construction Inspector</b>		YEARS OF EXPERIENCE <b>48</b>
WITH THIS FIRM <b>2</b>	WITH LAST FIRM (NAME & NO. OF YEARS) <b>RMY Construction Inc. (2 yrs)</b>	WITH OTHER FIRMS <b>50</b>	WITH THIS FIRM <b>7</b>	WITH LAST FIRM (NAME & NO. OF YEARS) <b>AECOM (16 yrs)</b>	WITH OTHER FIRMS <b>41</b>
EDUCATION (COLLEGE, DEGREE, YEAR, SPECIALIZATION) N/A			EDUCATION (COLLEGE, DEGREE, YEAR, SPECIALIZATION) N/A		
REGISTRATION (TYPE, YEAR, STATE) Operating Engineers Apprenticeship Program; NASSCO PACP/MACP/LACP			REGISTRATION (TYPE, YEAR, STATE) OSHA 10-hour; ECCATS Environmental; Field Sampling & Testing; NASSCO PACP/MACP/LACP		
<b>O'HARA, NORMAN</b>		STATUS ( <u>underline</u> ) <b>Full-Time</b> Part-Time	<b>IKEDA, NOLAND</b>		STATUS ( <u>underline</u> ) <b>Full-Time</b> Part-Time
TITLE OR POSITION <b>Construction Inspector</b>		YEARS OF EXPERIENCE <b>37</b>	TITLE OR POSITION <b>Construction Inspector</b>		YEARS OF EXPERIENCE <b>34</b>
WITH THIS FIRM <b>7</b>	WITH LAST FIRM (NAME & NO. OF YEARS) <b>Kiewit Infrastructure West (1 yr)</b>	WITH OTHER FIRMS <b>30</b>	WITH THIS FIRM <b>1</b>	WITH LAST FIRM (NAME & NO. OF YEARS) <b>Hawaiian Isle Electric (1 yr)</b>	WITH OTHER FIRMS <b>33</b>
EDUCATION (COLLEGE, DEGREE, YEAR, SPECIALIZATION) N/A			EDUCATION (COLLEGE, DEGREE, YEAR, SPECIALIZATION) Honolulu Community College - Electrical Isntallation/Maintenance, 1990		
REGISTRATION (TYPE, YEAR, STATE) OSHA 30-hour; Superintendent Training - Carpenters International Training Center; City NPDES MS4 Annual Training			REGISTRATION (TYPE, YEAR, STATE) Journey Worker Electrician (EJ-7734) - exp 6/30/2026		

# CONSTRUCTION MANAGEMENT DEPARTMENT

## PERSONAL HISTORY STATEMENT OF TECHNICAL PERSONNEL WITHIN YOUR FIRM

<b>HO, PHILLIP</b>		STATUS ( <u>underline</u> ) <b>Full-Time</b> Part-Time	<b>MCADAM, SCOTT</b>		STATUS ( <u>underline</u> ) <b>Full-Time</b> Part-Time
TITLE OR POSITION <b>Construction Inspector</b>		YEARS OF EXPERIENCE <b>31</b>	TITLE OR POSITION <b>Construction Inspector</b>		YEARS OF EXPERIENCE <b>30</b>
WITH THIS FIRM <b>9</b>	WITH LAST FIRM (NAME & NO. OF YEARS) <b>Frank Collucio Construction (9 yrs)</b>	WITH OTHER FIRMS <b>22</b>	WITH THIS FIRM <b>3</b>	WITH LAST FIRM (NAME & NO. OF YEARS) <b>City and County of Honolulu (27 yrs)</b>	WITH OTHER FIRMS <b>27</b>
EDUCATION (COLLEGE, DEGREE, YEAR, SPECIALIZATION) Honolulu Community College - A.S., 1987, Diesel Maintenance and Repair			EDUCATION (COLLEGE, DEGREE, YEAR, SPECIALIZATION) N/A		
REGISTRATION (TYPE, YEAR, STATE) OSHA 10-hour; ACI Concrete Testing Tech, Grade 1; Field Sampling and Testing - Soils & Aggregate, Concrete; Storm Water BMP; Best Practices Asphalt Pavements; NPDES MS4; Fall Protection; Certified Inspector of Sediment & Erosion Control			REGISTRATION (TYPE, YEAR, STATE) Grade 4 Collection System Operator; OSHA - Trenching and Shoring; ATSSA Certified Flagger; Confined Space, City NPDES MS4 Annual Training; Excavation & Trenching; MASSCO PACP/LACP/MACP; Erosion and Sediment Control Plan Coordinator		
<b>FITT, JAMES</b>		STATUS ( <u>underline</u> ) <b>Full-Time</b> Part-Time	<b>NEIGHBARGER, NEIL</b>		STATUS ( <u>underline</u> ) <b>Full-Time</b> Part-Time
TITLE OR POSITION <b>Construction Inspector</b>		YEARS OF EXPERIENCE <b>28</b>	TITLE OR POSITION <b>Construction Inspector</b>		YEARS OF EXPERIENCE <b>21</b>
WITH THIS FIRM <b>2</b>	WITH LAST FIRM (NAME & NO. OF YEARS) <b>Osmosis Utility Services, Inc (14 yrs)</b>	WITH OTHER FIRMS <b>26</b>	WITH THIS FIRM <b>4</b>	WITH LAST FIRM (NAME & NO. OF YEARS) <b>Watts Constructors (4 yrs)</b>	WITH OTHER FIRMS <b>17</b>
EDUCATION (COLLEGE, DEGREE, YEAR, SPECIALIZATION) N/A			EDUCATION (COLLEGE, DEGREE, YEAR, SPECIALIZATION) N/A		
REGISTRATION (TYPE, YEAR, STATE) HDOT Medical Examiner's Certificate; Erosion and Sediment Control Plan Coordinator			REGISTRATION (TYPE, YEAR, STATE) NASSCO PACP/MACP/LACP; City NPDES MS4 Annual Training; Safety Intelligence Institute Excavation and Trenching; Erosion and Sediment Control Plan Coordinator		
<b>DEMELLO, WILFRED</b>		STATUS ( <u>underline</u> ) <b>Full-Time</b> Part-Time	<b>PALOMBO, SEAN</b>		STATUS ( <u>underline</u> ) <b>Full-Time</b> Part-Time
TITLE OR POSITION <b>Construction Inspector</b>		YEARS OF EXPERIENCE <b>12</b>	TITLE OR POSITION <b>Construction Inspector</b>		YEARS OF EXPERIENCE <b>9</b>
WITH THIS FIRM <b>2</b>	WITH LAST FIRM (NAME & NO. OF YEARS) <b>Pural Water Specialty Co. (4 yrs)</b>	WITH OTHER FIRMS <b>10</b>	WITH THIS FIRM <b>1</b>	WITH LAST FIRM (NAME & NO. OF YEARS) <b>Blue Water Glass Hawaii (13 yrs)</b>	WITH OTHER FIRMS <b>8</b>
EDUCATION (COLLEGE, DEGREE, YEAR, SPECIALIZATION) N/A			EDUCATION (COLLEGE, DEGREE, YEAR, SPECIALIZATION) Honolulu Community College - Construction Management Kapiolani Community College		
REGISTRATION (TYPE, YEAR, STATE) DSO I Certified; Erosion and Sediment Control Plan Coordinator			REGISTRATION (TYPE, YEAR, STATE) ERGO Robotics GL 1200 Operator; ACI Concrete Field Testing Technician - Grade I		

# GEOGRAPHIC INFORMATION SYSTEMS

## PERSONAL HISTORY STATEMENT OF TECHNICAL PERSONNEL WITHIN YOUR FIRM

<b>NAME</b> <b>CHING, BENTON</b>			<b>STATUS ( underline)</b> <b><u>Full-Time</u> Part-Time</b>			<b>NAME</b> <b>NIERMANN, JAMES A.</b>			<b>STATUS ( underline)</b> <b><u>Full-Time</u> Part-Time</b>		
<b>TITLE OR POSITION</b> GIS and Geospatial Coordinator			<b>YEARS OF EXPERIENCE</b> 41			<b>TITLE OR POSITION</b> GIS Specialist / Project Coordinator (Planning)			<b>YEARS OF EXPERIENCE</b> 28		
<b>WITH THIS FIRM</b> 2		<b>WITH LAST FIRM (NAME &amp; NO. OF YEARS)</b> U.S. Army Corps of Engineers (34 yrs)		<b>WITH OTHER FIRMS</b> 39		<b>WITH THIS FIRM</b> 26		<b>WITH LAST FIRM (NAME &amp; NO. OF YEARS)</b> Waianae Coast Community Alternatives (1 yr)		<b>WITH OTHER FIRMS</b> 2	
<b>EDUCATION (COLLEGE, DEGREE, YEAR, SPECIALIZATION)</b>						<b>EDUCATION (COLLEGE, DEGREE, YEAR, SPECIALIZATION)</b>					
University of Hawaii at Manoa - M.S., 1994, Coastal Engineering Marquette University - B.S., 1983, Civil Engineering						University of Hawaii at Manoa - M.U.R.P., 1996, Urban and Regional Planning Johns Hopkins Nanjing University - Graduate Certificate, 1992 University of California at Santa Barbara - B.A., 1990, Asian Studies					
<b>REGISTRATION (TYPE, YEAR, STATE)</b>						<b>REGISTRATION (TYPE, YEAR, STATE)</b>					
Professional Civil Engineer - 1997 Hawaii (PE-9346)						American Institute of Certified Planners - 2003 LEED AP BD+C - 2009					
<b>NAME</b> <b>LIAO, TSUNG-I</b>			<b>STATUS ( underline)</b> <b><u>Full-Time</u> Part-Time</b>			<b>NAME</b> <b>STAPLES, KELLY</b>			<b>STATUS ( underline)</b> <b><u>Full-Time</u> Part-Time</b>		
<b>TITLE OR POSITION</b> GIS Specialist / Senior Engineer (civil)			<b>YEARS OF EXPERIENCE</b> 22			<b>TITLE OR POSITION</b> GIS Specialist / Senior Planner			<b>YEARS OF EXPERIENCE</b> 13		
<b>WITH THIS FIRM</b> 22		<b>WITH LAST FIRM (NAME &amp; NO. OF YEARS)</b> 0		<b>WITH OTHER FIRMS</b> 0		<b>WITH THIS FIRM</b> 11		<b>WITH LAST FIRM (NAME &amp; NO. OF YEARS)</b> University of Hawaii (1 yr)		<b>WITH OTHER FIRMS</b> 2	
<b>EDUCATION (COLLEGE, DEGREE, YEAR, SPECIALIZATION)</b>						<b>EDUCATION (COLLEGE, DEGREE, YEAR, SPECIALIZATION)</b>					
University of Hawaii at Manoa - M.S., 2003, Civil Engineering University of Hawaii at Manoa - B.S., 1999, Civil Engineering						University of Hawaii at Manoa - M.S., 2013, Natural Resources & Environmental Mgmt California State University, Bakersfield - B.S., 2011, Environmental Resource Mgmt University of California at Santa Barbara - B.S., 2007, Biological Sciences					
<b>REGISTRATION (TYPE, YEAR, STATE)</b>						<b>REGISTRATION (TYPE, YEAR, STATE)</b>					
Professional Civil Engineer - 2009 Hawaii (PE-13247) ASCE						APA, APWA					

**OUTSIDE ASSOCIATES AND CONSULTANTS USUALLY EMPLOYED**

DISCIPLINE	NAME OF FIRM OR INDIVIDUAL	
<b>ARCHITECTS</b>	Architects Hawaii, Ltd. Architects Pacific, Inc. CDS International Design Partners, Inc. Ferraro Choi Architects, Inc. Franklin Wong & Associates, Ltd FAI Architects hierarchy llp INK ARCH LLC Kauahikaua & Chun	Kober / Hanssen / Mitchell KYA Design Group Next Design, LLC Pacific Architects, Inc. Paul S. Osumi, Inc. Shimokawa + Nakamura WATG WCIT Architecture Yamasato Fujiwara Higa & Assoc
<b>CIVIL / WATER / WASTEWATER ENGINEERS</b>	In-House Carollo Engineers Engineering Partners, Inc. exp Federal	HDR, Inc. Jacobs McGovern McDonald Engineers Stantec Consulting Services, Inc
<b>MECHANICAL / FIRE PROTECTION ENGINEERS</b>	Engineering Partners, Inc. InSynergy Engineering, Inc. MCE International, Inc. Mechanical Engineers of Hawaii Mechanical Enterprises, Inc.	Notkin Hawaii, Inc. Okahara & Associates, Inc. Randolph Murayama & Assoc. Inc Thermal Engineering Corporation
<b>GEOTECHNICAL ENGINEERS</b>	Geolabs, Inc. Hirata & Associates, Inc. Kokua Geotech LLC	Masa Fujioka & Associates Pacific Geotechnical Engineers Yogi Kwong Engineers, LLC
<b>ELECTRICAL ENGINEERS</b>	Albert Chong & Associates, Inc. ECM, Inc. Engineering Partners, Inc. H&O-III, Inc. HHMI Corporation InSynergy Engineering, Inc. Kraig K. Otani & Associates, LLC	MK Engineers, Ltd. Morikawa & Associates, Inc. Nakamura Oyama & Associates Ronald N.S. Ho & Associates, Inc. TJC & Associates, Inc. (SCADA) Wallace T. Oki, Inc. Yuki Matsumoto & Associates
<b>PERMITTING / PLANNERS</b>	In-House Kimura International Munekiyu Hiraga	PBR Hawaii & Associates, Inc SSFM International
<b>FLORA &amp; FAUNA CONSULTANTS</b>	AECOS, Inc. LeGrande Biological Surveys	Phillip Bruner
<b>WATER QUALITY</b>	AECOS, Inc.	
<b>OCEAN ENGINEERING</b>	Oceanit	Sea Engineering, Inc.
<b>RESOURCE SURVEYS</b>	SMS Research & Marketing, Inc.	
<b>VULNERABILITY SECURITY AND ASMT</b>	Hinman Consulting Engineers	Kroll Schiff & Associates
<b>HYDRAULIC TRANSIENT ANALYST</b>	Flow Science, Inc. HDR, Inc.	Scott Foster Engineering, Inc

DISCIPLINE	NAME OF FIRM OR INDIVIDUAL	
<b>STRUCTURAL ENGINEERS</b>	Alvin Zane & Associates, Inc. Engineering Partners, Inc. GKO & Associates KAD, Inc. KAI Hawaii, Inc. KSF, Inc. Nagamine Okawa Engineers, Inc.	NTW Associates, Inc. Sato & Associates, Inc. SSFM International, Inc. Warren S. Unemori Engineering, Inc Wes Segawa & Associates
<b>ENVIRONMENTAL CONSULTANTS</b>	Kauai Environmental, Inc. Element Environmental, LLC EnviroServices & Training Center EnviroQuest, Inc.	Integrated Consultants Myounghee Noh & Associates, Owen Environmental, Inc.
<b>ACOUSTICAL ENG.</b>	D.L. Adams Associates, Inc.	Y. Ebisu & Associates, Inc.
<b>ARCHAEOLOGY</b>	Āina Archaeology Cultural Services Hawaii, Inc.	International Archaeology, LLC Scientific Consulting Services
<b>TRAFFIC ENGINEERS</b>	Austin Tsutsumi & Assoc., Inc. Fehr & Peers ICX Transportation Group Julian Ng, Incorporated Phillip Rowell & Associates	SSFM International Traffic Management Consultant Transportation Solutions, Inc. Wilson Okamoto Corporation WSP
<b>COST ESTIMATORS</b>	In-House Pacific Cost Engineering, LLC J. Uno & Associates	Construction Cost Management International Corp. Rider Levett Bucknall
<b>HYDROGEOLOGICAL ENGINEERS</b>	Element Environmental Mink & Yuen, Inc. MRC LLC	Tom Nance Water Resource Engineering, Inc. Water Resources Associates
<b>SURVEYING</b>	In-House Austin, Tsutsumi & Associates Drone Services Hawaii Engineering Partners, Inc.	Engineers Surveyors Hawaii Esaki Surveying and Mapping Par-En dba Park Engineering Resource Mapping Hawaii, LLC
<b>TELECOMMUNICATIONS CONSULTING</b>	Hawaiian Telcom InSynergy Engineering, Inc.	Ronald N.S. Ho & Associates
<b>LANDSCAPE ARCHITECTS</b>	Brownlie & Lee Lester H. Inouye & Associates Miyabara & Associates PBR Hawaii & Associates, Inc.	Randal Fujimoto Landscape Arc Richard Bigler & Associates Walters Kimura Motoda, Inc.
<b>STUDENT HOUSING</b>	American Campus Communities	Hawaii Campus Developers
<b>OTHER CONSULTANT AFFILIATIONS</b>	<b>Sewer Tunneling:</b> McMillen Jacobs Associates <b>Field Measurements for Wastewater:</b> MGD <b>Corrosion / Condition Assessments:</b> V&A Consulting Engineers <b>Real Estate Appraisal:</b> Yamaguchi & Yamaguchi	

**ERRORS AND OMISSIONS INSURANCE**

DOES YOUR FIRM HAVE ERRORS & OMISSION (E&O) INSURANCE? (Underline)		AMOUNT OF COVERAGE PER CLAIM	AMOUNT OF DEDUCTIBLE
<u>YES</u>	NO	PROJECT INSURANCE	\$ 2,000,000
			\$ 250,000

Submit proof of insurance or insurability from your insurance carrier with this form.  
**Proof of insurance is attached on the following page.**



**SUMMARY OF YOUR FIRM'S COMPLETED AND PRESENT PROJECTS DURING THE LAST TEN YEARS**

**AS A PRIME A/E CONSULTANT**

TOTAL NUMBER OF COMPLETED PROJECTS	1,850
TOTAL ESTIMATED CONSTRUCTION COST OF COMPLETED PROJECTS	\$ 2,000,000,000
TOTAL NUMBER OF PRESENT PROJECTS	450
TOTAL ESTIMATED CONSTRUCTION COST OF PRESENT PROJECTS	\$ 1,000,000,000+

**AS AN ASSOCIATE WITH OTHER A/E CONSULTANTS**

TOTAL NUMBER OF COMPLETED PROJECTS	450
TOTAL ESTIMATED CONSTRUCTION COST OF COMPLETED PROJECTS (ONLY THE PORTION OF WORK FOR WHICH YOUR FIRM WAS RESPONSIBLE)	\$ 140,000,000
TOTAL NUMBER OF PRESENT PROJECTS	120
TOTAL ESTIMATED CONSTRUCTION COST OF PRESENT PROJECTS (ONLY THE PORTION OF WORK FOR WHICH YOUR FIRM IS RESPONSIBLE)	\$100,000,000+

**CLASS OF WORK AND PROJECT TYPE SPECIALIZATION**

TYPE OF PROJECT	TOTAL NO. OF COMPLETED PROJECTS	TOTAL ESTIMATED CONSTRUCTION COST	TOTAL ESTIMATED PROJECT SIZE (G.S.F.)
Civil Engineering, including Wastewater Engineering	850	\$1,900,000,000	N/A
Surveying and Photogrammetry	1,300	N/A	N/A
Planning	255	N/A	N/A
Construction Management	30	\$200,000,000	N/A
Project/Program Management	7	\$630,000,000	N/A

Categorize your firm's class for work during the last ten years by project type. Examples of project types include Educational, Commercial, Industrial, Residential, Health Care, Correctional and Judicial Facilities. Work may also be categorized as planning, civil sitework, renovation/alteration, architectural barrier removal, fire alarm system, etc.

Note: Figures are estimates.

**PRESENT/COMPLETED PROJECTS IN WHICH YOUR FIRM IS/WAS DESIGNATED THE PRIME CONSULTANT (BY TYPE)**

(LIST A MAXIMUM OF 10 PROJECTS FOR EACH DISCIPLINE/TYPE OF WORK BEING APPLIED FOR. LIST PROJECTS THAT REFLECT YOUR ABILITY TO PROVIDE QUALITY WORK FOR YOUR REQUESTED PROJECTS.)

**TYPES OF WORK**

**TA.4) COMMUNITY PLANNING (PUBLIC TRANSIT MAPPING AND GRAPHIC DESIGN)**

YEAR	NAME AND LOCATION OF THE PROJECT	NAME OF LEAD DESIGNER	NAME, ADDRESS, PHONE & FAX NO. OF THE OWNER	ESTIMATED CONST. COST (\$)	DURATION FOR DESIGN (MONTHS)	% COMPLETED	
						DESIGN	CONST.
<b>TA.4) COMMUNITY PLANNING (PUBLIC TRANSIT MAPPING AND GRAPHIC DESIGN)</b>							
2023	1667 & 1673 Kapiolani Boulevard - Interim Planned Development-Transit Permit and Special District Permit Oahu, HI	Isaiah Sato, PE	KC Rainbow Development Co., LLC 1296 Kapiolani Boulevard #2 Honolulu, Hawaii 96814 (Fred Chan, (808) 597-1088)	\$54,000 (fee)	Ongoing	60	N/A
2022	1538 Kapiolani Boulevard - Interim Planned Development-Transit Permit and Special District Permit Oahu, HI	Isaiah Sato, PE	J L Capital 1440 Kapiolani Boulevard #1509 Honolulu, Hawaii 96814 (Tim Lee, (808) 445-9080)	\$105,000 (fee)	Ongoing	90	N/A
2020	Ala Moana Plaza - Interim Planned Development-Transit Permit and Special District Permit Oahu, HI	David Tanoue, Esq.	Brookfield Properties 1003 Bishop Street, Pauahi Tower, Suite 2288 Honolulu, Hawaii 96813 (Kris Hui, (808) 380-1894)	\$140,000 (fee)	24	100	N/A
2019	Hoopili Development, Temporary Park and Ride Oahu, HI	Brent Nakaoka, PE, LEED AP	D.R. Horton Hawaii LLC 130 Merchant Street, Suite 112 Honolulu, HI 96813 (Tracy Tonaki, (808) 782-4109)	\$2,000,000	4	100	100
2018	Honolulu Rail Transit Project, 138kV Relocation of Overhead Lines Along Kamehameha Highway Oahu, HI	Stacy Armstrong, PE, LEED AP	Honolulu Authority for Rapid Transportation 1099 Alakea Street Alii Place, 1st Floor Honolulu, HI 96813 (Clayton Wong, (808) 768-6133)	\$8,766,327 (fee)	Ongoing	95	0
2017	Due Diligence for Transit Oriented Development (TOD) Kapalama and Shafter Flats (Moanalua Kai) Oahu, HI	Stacy Armstrong, PE, LEED AP	State of Hawaii Department of Hawaiian Home Lands PO Box 1879 Honolulu, HI 96805 (Allen Yanos, (808) 620-9460)	\$182,000 (fee)	12	100	N/A
2014	Honolulu Rail Transit Project, Real Estate Mapping and Surveying Services (Boundary Surveys, Right-of-way and Parcel Mapping) Oahu, HI (2019-Addendum: Extra Work)	Ryan Suzuki, LLS, LLC	Honolulu Authority for Rapid Transportation 1099 Alakea Street Alii Place, 1st Floor Honolulu, HI 96813 (Nancy Tornatore, (808) 768-6124)	\$4,500,000 (fee)	Ongoing	N/A	N/A
2014	Haleiwa Improvement District, Multi-Modal Traffic Study, Environmental Impact Statement and Improvement District Preliminary Report, Graphic Design for Alternatives (Project Changed to CIP Project) Oahu, HI	Gordon Ring, PE, LEED AP	City and County of Honolulu Department of Design and Construction 650 South King Street, 14th Floor Honolulu, HI 96813 (Ann Shimatsu, (808) 768-8805)	\$2,385,000 (fee)	24	100	N/A

**PRESENT/COMPLETED PROJECTS IN WHICH YOUR FIRM IS/WAS DESIGNATED THE PRIME CONSULTANT (BY TYPE)**

(LIST A MAXIMUM OF 10 PROJECTS FOR EACH DISCIPLINE/TYPE OF WORK BEING APPLIED FOR. LIST PROJECTS THAT REFLECT YOUR ABILITY TO PROVIDE QUALITY WORK FOR YOUR REQUESTED PROJECTS.)

**TYPES OF WORK**

**TA.4) COMMUNITY PLANNING (PUBLIC TRANSIT MAPPING AND GRAPHIC DESIGN)**

YEAR	NAME AND LOCATION OF THE PROJECT	NAME OF LEAD DESIGNER	NAME, ADDRESS, PHONE & FAX NO. OF THE OWNER	ESTIMATED CONST. COST (\$)	DURATION FOR DESIGN (MONTHS)	% COMPLETED	
						DESIGN	CONST.
2013	Hoopili Infrastructure Master Plans and Design Oahu, HI	Brent Nakaoka, PE, LEED AP BD+C	D.R. Horton-Schuler Division 130 Merchant Street, Suite 112 Honolulu, HI 96813 (Tracy Tonaki, (808) 782-4109)	\$200,000,000+	Ongoing	Ongoing	Ongoing
2001	Bus Rapid Transit Regional System Oahu, HI	Greg Hiyakumoto, PE, LEED AP, ENV SP	City and County of Honolulu Department of Transportation Services 650 South King Street, 3rd Floor Honolulu, Hawaii 96813 (Toru Hamayasu (retired) / Frank Doyle (now at City ENV), (808) 768-3486)	\$203,000,000	36	100	N/A

**PRESENT/COMPLETED PROJECTS IN WHICH YOUR FIRM IS/WAS ASSOCIATED WITH OTHERS (BY TYPE)**

(LIST A MAXIMUM OF 10 PROJECTS FOR EACH DISCIPLINE/TYPE OF WORK BEING APPLIED FOR. LIST PROJECTS THAT REFLECT YOUR ABILITY TO PROVIDE QUALITY WORK FOR YOUR REQUESTED PROJECTS.)

**TYPES OF WORK**

**TA.4) COMMUNITY PLANNING (PUBLIC TRANSIT MAPPING AND GRAPHIC DESIGN)**

YEAR	NAME AND LOCATION OF THE PROJECT	NAME, ADDRESS, PHONE & FAX NO. OF THE OWNER	ESTIMATED CONSTRUCTION COST		DURATION FOR DESIGN (MONTHS)	PRIME FIRM ASSOCIATED WITH	% COMPLETED	
			ENTIRE PROJECT	YOUR FIRM'S WORK			DESIGN	CONST.
<b>TA.4) COMMUNITY PLANNING (PUBLIC TRANSIT MAPPING AND GRAPHIC DESIGN)</b>								
2022	HART General Engineering Contract (GEC) IV - Honolulu Rail Transit Project Oahu, HI	City & County of Honolulu Honolulu Authority for Rapid Transportation 1099 Alakea Street, 17th Floor Honolulu, HI 96813 ((808) 768-6159)	N/A	\$514,000 (fee)	Ongoing	Jacobs Engineering Group	N/A	32
2021	City and County of Honolulu EV Chargers Stations at Various Locations Oahu, HI	City and County of Honolulu Department of Design and Construction 650 South King Street, 11th Floor Honolulu, HI 96813 ((808) 768-8794)	N/A	\$62,383 (fee)	30	Ronald N.S. Ho & Associates, Inc.	100	30
2018	Lihue Town Core Mobility and Revitalization Project (Design-Build - Lead Designer) Kauai, HI	County of Kauai Department of Public Works 4444 Rice Street, Suite 275 Lihue, HI 96766 (Wade Lord, (808) 241-4906)	\$14,000,000	\$854,000 (fee)	12	Kiewit Infrastructure West, Co.	100	100
2017	General Transit Oriented Development (TOD) Iwilei Station Area Master Plan Oahu, HI	City and County of Honolulu Department of Planning and Permitting 650 South King Street Honolulu, HI 96813 ((808) 768-8000)	N/A	\$54,000 (fee)	12	PBR Hawaii	100	N/A
2016	Kapalama Canal Catalytic Project, TOD Oahu, HI	City and County of Honolulu Department of Planning and Permitting 650 South King Street Honolulu, HI 96813 ((808) 768-8000)	N/A	\$135,000 (fee) \$74,575 (E fee)	On hold	WCIT Architecture	60	N/A
2016	Rail Station Connectivity for Transit-Oriented Development Waipahu Transit Center, Graphic Renderings (Design-Build) Oahu, HI	City and County of Honolulu Department of Transportation Services 650 South King Street, 3rd Floor Honolulu, HI 96813 ((808) 768-8305)	\$4,500,000	\$148,280 (fee)	12	Kiewit Infrastructure West Co.	100	100
2014	Construction, Engineering and Inspection, East Section Oahu, HI	City & County of Honolulu Honolulu Authority for Rapid Transportation 1099 Alakea Street, 17th Floor Honolulu, HI 96813 ((808) 768-6159)	N/A	\$1,256,000 (fee)	N/A	URS Corporation	N/A	100

**PRESENT/COMPLETED PROJECTS IN WHICH YOUR FIRM IS/WAS ASSOCIATED WITH OTHERS (BY TYPE)**

(LIST A MAXIMUM OF 10 PROJECTS FOR EACH DISCIPLINE/TYPE OF WORK BEING APPLIED FOR. LIST PROJECTS THAT REFLECT YOUR ABILITY TO PROVIDE QUALITY WORK FOR YOUR REQUESTED PROJECTS.)

**TYPES OF WORK**

**TA.4) COMMUNITY PLANNING (PUBLIC TRANSIT MAPPING AND GRAPHIC DESIGN)**

YEAR	NAME AND LOCATION OF THE PROJECT	NAME, ADDRESS, PHONE & FAX NO. OF THE OWNER	ESTIMATED CONSTRUCTION COST		DURATION FOR DESIGN (MONTHS)	PRIME FIRM ASSOCIATED WITH	% COMPLETED	
			ENTIRE PROJECT	YOUR FIRM'S WORK			DESIGN	CONST.
2011	Honolulu Rail Transit Project, General Engineering Contract Oahu, HI	City & County of Honolulu Honolulu Authority for Rapid Transportation 1099 Alakea Street, 17th Floor Honolulu, HI 96813 ((808) 768-6159)	N/A	\$6,800,000 (fee)	24	Parsons Brinckerhoff Quade & Douglas, Inc.	100	N/A
2010	Honolulu High Capacity Transit Corridor Project, Monitoring of Test Borings Oahu, HI	City & County of Honolulu Honolulu Authority for Rapid Transportation 1099 Alakea Street, 17th Floor Honolulu, HI 96813 ((808) 768-6159)	N/A	\$308,743 (fee)	N/A	Parsons Brinckerhoff Quade & Douglas, Inc.	N/A	100
2007	Honolulu High-Capacity Transit Corridor Project, Preliminary Engineering Oahu, HI	City and County of Honolulu Department of Transportation Services 650 South King Street, 3rd Floor Honolulu, HI 96813 ((808) 768-8305)	N/A	\$7,278,818	36	Parsons Brinckerhoff Quade & Douglas, Inc.	100	N/A

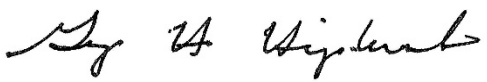
Explain firm's individual project assignment, project management structure, project execution (work flow and responsibilities) and quality control process. In the event the spaces provided on this form are not sufficient for entries, or if you wish to furnish additional information, it may be inserted here or on separate sheets, with appropriate references.

**“ATTACHMENT 1” following this page provides the requested information.**

**Please see also:**

**Tab 10 R. M. Towill Corporation, Statement of Qualifications**

As of this date June 27, 2024 the foregoing is a true statement of facts.

NAME OF FIRM OR INDIVIDUAL SUBMITTING QUESTIONNAIRE	TYPE NAME AND TITLE OF PERSON SIGNING	SIGNATURE
<b>R. M. Towill Corporation</b>	<b>Greg H. Hiyakumoto, PE, LEED AP, ENV SP President</b>	

NOTE: It is to a firm's advantage to maintain its experience record on a current basis. This may be accomplished by periodically forwarding current data to DAGS.

---

## Attachment 1



## RMTC as Prime Consultant

The R. M. Towill Corporation (RMTC) frequently serves as Prime Consultant for major design projects and/or Indefinite Delivery (open-end) contracts involving multi-disciplinary services. In this role, RMTC provides a single point of contact for the client on contractual issues and assumes full responsibility for all aspects of project execution, including budget, timeliness, and quality. RMTC's approach to project management is highlighted below.

## Individual Project Assignment

RMTC's practice is to assign qualified personnel to accomplish specific project tasks. Our organization is structured to provide multiple levels for support and reviews to ensure consistent production of quality work. RMTC also promotes the professional development of staff members.

## RMTC Project Management Structure

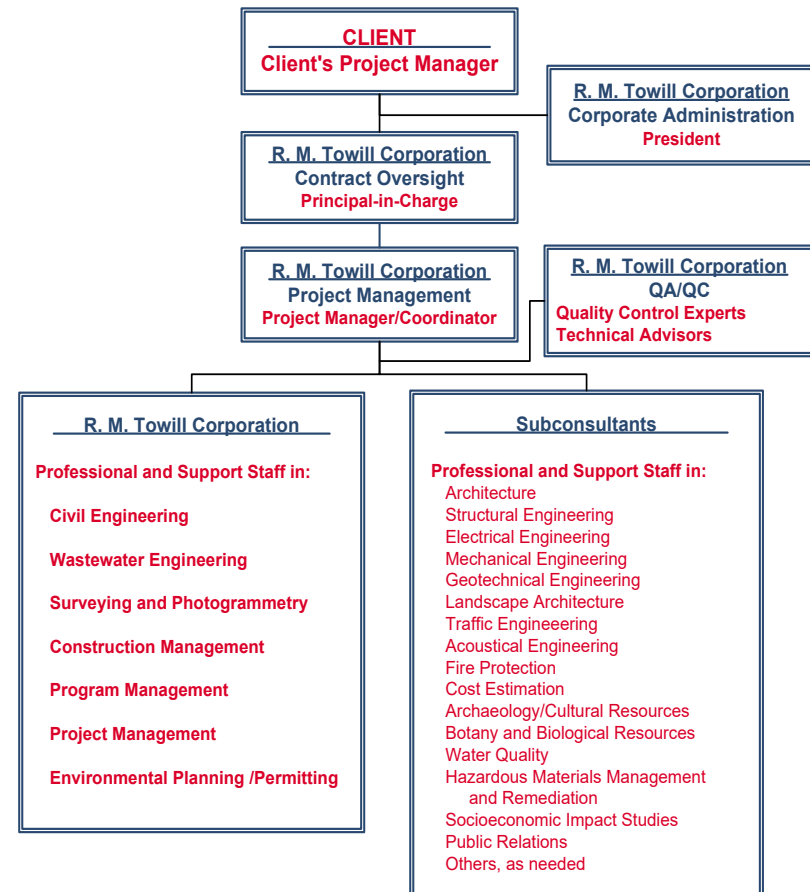
All of RMTC's projects call for a management structure that is both *responsible* and *responsive to the client's needs and expectations*. The typical project organizational chart to the right shows the normal structure of management reporting for projects in which RMTC is the prime consultant. The **client and the client's project manager** are at the top of the hierarchy. The role of each additional management position is discussed briefly below.

Though not directly involved with project execution, responsibility for the overall performance of the company falls upon the **President**. As such, final approval of major courses of action regarding the commitment of company resources, teaming arrangements, and contractual issues are made at this level.

Responsibility for individual projects begins near the top of the organizational structure with the **Principal-in-Charge** (PIC). PICs, as officers of the company, are responsible for ensuring that all contractual obligations are met through the proper allocation of company resources. They are readily available to the team for consultation on technical or contract-related issues.

RMTC's **Project Managers** and **Project Coordinators** (PMs/PCs) are experts in their disciplines and seasoned project leaders. PMs/PCs serve as the client's primary point of contact and carry the day-to-day responsibility for planning and directing project work tasks. They manage the scope of work of both internal team members and specialty subconsultants, create and continually update the electronic project schedule, and monitor the team's progress toward the completion of deliverables.

TYPICAL PROJECT ORGANIZATIONAL CHART  
R. M. TOWILL CORPORATION



## Internal and External Coordination

Key to a successful project is clear and open communication and efficient coordination between all team members. To monitor project progress and resolve any issues that arise, the project manager conducts regular team meetings. Periodic client meetings are also held to review project status and resolve questions. Coordination with government reviewers and agencies is conducted on a regular basis during project submittals. Obtaining a clear understanding of agency intentions and requirements saves time and reduces revisions.

## Coordination with Subconsultants

RMTC has successfully managed many large projects with subconsultants from multiple disciplines. Our typical coordination process begins with a careful team member selection procedure in which we evaluate the subconsultants' relevant expertise, past performance, ability to produce sound designs, responsiveness to deadlines and requests, and flexibility in dealing with cost and site-specific situations.

To ensure there are no gaps in overall project delivery, the PM/PC sets up the overall work scope for each subconsultant, then meets with each to define the details of their project contributions. During the design process, the PM/PC conducts an initial team partnering meeting that is followed by regular team coordination meetings, individual subconsultant meetings, site excursions, sharing of drawings via RMTC's FTP site, and telephone and email correspondence. To achieve and maintain clear lines of communication and understanding of design requirements, subconsultant participation in client and user meetings and activities is mandatory.

## Project Execution (Workflow and Responsibilities)

The following time-tested methods ensure that all work products are correct, designs are cost-effective, and delivery of work products will be on schedule.

- **Project Initiation Meeting.** The scope of work, project schedule and assumptions are coordinated among the RMTC staff and team members. Goals and objectives are clarified and commitments of manpower and resources are made at this meeting.

- **Work Plan.** The Project Manager develops a detailed, electronic project work plan that covers all aspects of the project and identifies critical path items and potential issues that may affect the project. The work plan is regularly updated to include revised assumptions and criteria. An efficient and comprehensive work plan greatly reduces design omissions and errors by calling attention to issues early in the planning and design process as well as keeps the project on schedule.
- **Scheduling.** The PM/PC develops a detailed work schedule that outlines the various in-house and team member tasks along with all milestone deadlines and design pre-requisites. Management of the team to meet the overall schedule allows time for implementation of proper quality management procedures. It is therefore a high priority for RMTC to control any deviations from the schedule, unless predicated by a change in project scope or directed by the client.
- **Guidance and Training.** Key staff and team members are encouraged to attend training seminars and classes to keep up with new technologies, regulations, and industry products. RMTC adheres to the principle that proper training and guidance is key to being technically proficient, innovative, efficient and, most importantly, delivering high-quality products to the client. Junior staff members at RMTC are trained in fundamental design procedures through close supervision.
- **Technical Review.** Each design undergoes a series of reviews by the Project Manager and one or more of their peers. The Project Manager ensures that each project deliverable matches contractual requirements.
- **Project Synopsis.** At the end of each project, a review is made by in-house and consultant team members to identify lessons-learned and ways to improve service to the client. Insights from these sessions are invaluable in setting up work plans for future projects and showing less experienced professionals how problems are solved to complete projects successfully.

## Quality Control Process

Responsibility for design quality falls on every member of our design team. Consistency is accomplished through documented processes such as written technical standards, checklists, and forms. Our design team is selected, structured, and continually refocused to ensure preparation of sound designs



and products. RMTC’s project managers and coordinators, each with over 20 years of experience, develop the project approach and design concepts. Each concept is then further developed by senior engineers and design staff. The PMs operate in a “hands-on” fashion with full control of the design at all times. A quality control expert who is independent of the design team, qualified in the discipline, and experienced with the type of work, performs quality control reviews at significant milestones. These reviews are strategically timed to maximize efficiency and minimize rework. Manager reviews are performed prior to each scheduled submittal to check for design conflicts, omissions and inadequacies, potential cost savings, and potential permitting, land use or environmental triggers. Prior to signing and stamping plans, the PMs perform a final documents check.

## Technological Capabilities

### Computer-Aided Drafting (CAD) Equipment

- Autodesk Civil 3D 2023
- Autodesk Map 2023
- Autodesk Navisworks Manage 2023
- Autodesk Infraworks 2023
- Autodesk 3ds Max Design 2023
- Autodesk Raster Design 2023
- Autodesk Recap Pro 2023
- Autodesk Revit MEP 2023
- Autodesk Plant Design 2023
- Autodesk Vehicle Tracking 2023
- Autodesk River Analysis 2023
- Autodesk BIM 360 Design
- Bentley Microstation, XM Edition
- Bentley InRoads, SelectCAD
- Bentley WaterCAD
- Bentley Siteops
- Bentley SewerGEMS
- Leica Cyclone 9.4
- Leica Cyclone Register 360
- Leica CloudWorx

## Equipment Resources

<i>Workstations</i>	100 in use / 10 spare
<i>Microstation Workstations</i>	2
<i>Network</i>	1
<i>Network Servers with Backup</i>	9 Physical 26 Virtual

<i>Photogrammetry Equipment</i>	▪ Wild Analytical BC3 Stereoplotter
<i>Surveying Equipment</i>	▪ 1 Leica Geosystems RTC 360 Laser Scanner (3D)
	▪ 2 GPS Total Station System
	▪ 1 GPS Total Station 4800
	▪ 3 Nikon DTM-522 Total Station
	▪ 3 Pentax PTS-V3, R-123, and PTS-605 Total Station
	▪ 3 TDS Ranger 300 Data Collectors
	▪ 3 TDS Recon Data Collectors
	▪ 1 Trimble DiNi Digital Level
	▪ 1 Trimble R10 GNSS System
	▪ 4 App-Tek OdaLog
	▪ 1 LRSS Portable 2-Point Monitor
	▪ 1 Teledyne Isco Portable Sampler 6712
	▪ 1 YSI 556 MPS
	▪ 1 Flexim Flexus F601
	▪ 1 Dwyer PATH Super Kit
	▪ 1 EnviroSight Quickview Zoom Inspection Camera

### *Wastewater Equipment*

## Software for Geographic Information Systems

- ArcGIS 10.8.1 / ArcGIS 3.0 Pro
- 3D Analyst and Spatial Analyst Extensions for ArcGIS

## Software for Design and Surveying

<i>Traffic</i>	▪ Transoft AutoTurn 7.0
	▪ Transoft ParkCAD 4.0
	▪ HSC - Highway Capacity Manual Software
<i>Drainage</i>	▪ Hydraflow Extensions for AutoCAD Civil 3D
	▪ Storm and Sanitary Analysis for Civil 3D



*Drainage (cont.)*

- FHWA HY 8 Culvert Hydraulic Analysis Program
- FHWA Hydraulic Toolbox
- Watershed Modeling System (WMS)
- Surface-Water Modeling System (SMS)
- Climate Change Adaption Tools
- CMIP Processing Tool Version 2.1
- HEC-HMS / HEC-1 - Army Corps of Engineers Hydrologic Package
- HEC-RAS / HEC-2 - Army Corps of Engineers Flood Plain Hydraulics Package
- NRCS WinTR-20
- NRCS WinTR-55
- Cityworks
- WaterCAD

*Water*

*Airfields*

*Wastewater*

*Specification Writing*

*Cost Estimating*

*Surveying and  
Photogrammetry*

- Transoft AviPLAN Airside Pro 4.0.2
- EnviroSim BioWin 3.0
- Visual Hydraulics 4.1
- Engineered Software PIPE-FLO Pro 17
- SewerGEMS
- SPECSINTACT
- MCACES-Second Generation (MII) and TRACES
- Global Positioning System (GPS) Survey Software
- Dual Frequency GPS
- GPS-Driven Single Beam and Multi-Beam
- Aerial Photo Control Using Airborne GPS Combined with Inertial Measurement Unit (IMU)

*Presentation and  
Graphics*

MS PowerPoint; Corel Draw; MS Visio; Adobe Creative Cloud (Photoshop, Lightroom, Animate, Illustrator, Muse, Fuse, Audition, Bridge, InCopy, Prelude, Slate, Scout, SpeedGrade, InDesign, Acrobat Pro DC, Dreamweaver, After Effects, Premiere); Camtasia Studio 8; Snagit 12); Bluebeam; Autodesk Recap

*File Sharing*

DrChecks/Projetnet; Autodesk BIM 360 Docs; Autodesk Vault Professional 2023

**Production and General Use**

*Project Management*

MS Project; Primavera

*Spreadsheets*

MS Excel

*Word Processing*

MS Word; Corel WordPerfect

*Database*

MS Access; Deltek



<b>NAME</b> <b>HIYAKUMOTO, GREG, PE</b>	<b>TITLE AND POSITION</b> <b>President</b>	<b>YEARS WITH FIRM</b> <b>39</b>
<b>MAJOR RESPONSIBILITIES WITH THIS FIRM</b> Oversight of five (5) professional disciplines and administrative staff.		

**PRIOR EMPLOYMENT**

(START WITH LATEST EMPLOYMENT PRIOR TO JOINING THIS FIRM AND PROVIDE SIMILAR INFORMATION FOR EACH SEPARATE EMPLOYMENT OR MAJOR CHANGES IN DUTIES WITH THE SAME EMPLOYER.)

<b>FIRM:</b> None	<b>FIRM:</b>
<b>ADDRESS:</b>	<b>ADDRESS:</b>
<b>JOB TITLE:</b>	<b>JOB TITLE:</b>
<b>SUPERVISOR'S NAME AND TITLE:</b>	<b>SUPERVISOR'S NAME AND TITLE:</b>
<b>MAJOR DUTIES:</b>	<b>MAJOR DUTIES:</b>

<b>FIRM:</b>	<b>FIRM:</b>
<b>ADDRESS:</b>	<b>ADDRESS:</b>
<b>JOB TITLE:</b>	<b>JOB TITLE:</b>
<b>SUPERVISOR'S NAME AND TITLE:</b>	<b>SUPERVISOR'S NAME AND TITLE:</b>
<b>MAJOR DUTIES:</b>	<b>MAJOR DUTIES:</b>

<b>NAME</b> <b>YAMAMOTO, JAMES, PE</b>	<b>TITLE AND POSITION</b> <b>Vice President</b>	<b>YEARS WITH FIRM</b> 45
<b>MAJOR RESPONSIBILITIES WITH THIS FIRM</b> Vice President and Project Manager in RMTc's Civil Engineering Department.		

**PRIOR EMPLOYMENT**

(START WITH LATEST EMPLOYMENT PRIOR TO JOINING THIS FIRM AND PROVIDE SIMILAR INFORMATION FOR EACH SEPARATE EMPLOYMENT OR MAJOR CHANGES IN DUTIES WITH THE SAME EMPLOYER.)

<b>FIRM:</b> None	<b>FIRM:</b>
<b>ADDRESS:</b>	<b>ADDRESS:</b>
<b>JOB TITLE:</b>	<b>JOB TITLE:</b>
<b>SUPERVISOR'S NAME AND TITLE:</b>	<b>SUPERVISOR'S NAME AND TITLE:</b>
<b>MAJOR DUTIES:</b>	<b>MAJOR DUTIES:</b>

<b>FIRM:</b>	<b>FIRM:</b>
<b>ADDRESS:</b>	<b>ADDRESS:</b>
<b>JOB TITLE:</b>	<b>JOB TITLE:</b>
<b>SUPERVISOR'S NAME AND TITLE:</b>	<b>SUPERVISOR'S NAME AND TITLE:</b>
<b>MAJOR DUTIES:</b>	<b>MAJOR DUTIES:</b>

<b>NAME</b> <b>LAM, COLLINS, PE</b>	<b>TITLE AND POSITION</b> <b>Vice President</b>	<b>YEARS WITH FIRM</b> 21
<b>MAJOR RESPONSIBILITIES WITH THIS FIRM</b> Vice President and Manager of RMTC's Civil Engineering Department		

**PRIOR EMPLOYMENT**

(START WITH LATEST EMPLOYMENT PRIOR TO JOINING THIS FIRM AND PROVIDE SIMILAR INFORMATION FOR EACH SEPARATE EMPLOYMENT OR MAJOR CHANGES IN DUTIES WITH THE SAME EMPLOYER.)

<b>FIRM:</b> City and County of Honolulu Department of Design and Construction	<b>DATE</b> <b>FROM:</b> 01/09 <b>TO:</b> 12/11	<b>FIRM:</b> Island of Lanai Water and Wastewater Companies	<b>DATE</b> <b>FROM:</b> 01/04 <b>TO:</b> 05/05
<b>ADDRESS:</b> 650 South King Street, 11 <sup>th</sup> Floor, Honolulu, HI 96813		<b>ADDRESS:</b> P. O. Box 630310, Lanai City, HI 96763	
<b>JOB TITLE:</b> Deputy Director then Director		<b>JOB TITLE:</b> Interim Utilities Director	
<b>SUPERVISOR'S NAME AND TITLE:</b> Peter B. Carlisle, Mayor / Mufi Hannemann, Mayor		<b>SUPERVISOR'S NAME AND TITLE:</b> Gerrit Cormany, President	
<b>MAJOR DUTIES:</b> Oversee department's Capital Improvement Program. Responsible for the planning, design and construction of the City's infrastructure and for the daily operations of 250 engineers, architects and construction managers.		<b>MAJOR DUTIES:</b> Managed day-to-day operations of the island-wide water and wastewater systems. Developed Capital Improvement plans for the wastewater and water companies.	

<b>FIRM:</b> Clayton Group Services (now Bureau Veritas)	<b>DATE</b> <b>FROM:</b> 05/97 <b>TO:</b> 10/00	<b>FIRM:</b>	<b>DATE</b> <b>FROM:</b> <b>TO:</b>
<b>ADDRESS:</b> 841 Bishop Street, Honolulu, HI 96813		<b>ADDRESS:</b>	
<b>JOB TITLE:</b> Environmental Project Manager		<b>JOB TITLE:</b>	
<b>SUPERVISOR'S NAME AND TITLE:</b> Dan Ford, Owner		<b>SUPERVISOR'S NAME AND TITLE:</b>	
<b>MAJOR DUTIES:</b> Managed and coordinated the remediation of impacted soils and groundwater.		<b>MAJOR DUTIES:</b>	

<b>NAME</b> <b>TANOUE, DAVID</b>	<b>TITLE AND POSITION</b> <b>Vice President</b>	<b>YEARS WITH FIRM</b> 12
<b>MAJOR RESPONSIBILITIES WITH THIS FIRM</b> Vice President and Manager of RMTTC's Planning and Surveying Departments		

**PRIOR EMPLOYMENT**

(START WITH LATEST EMPLOYMENT PRIOR TO JOINING THIS FIRM AND PROVIDE SIMILAR INFORMATION FOR EACH SEPARATE EMPLOYMENT OR MAJOR CHANGES IN DUTIES WITH THE SAME EMPLOYER.)

<b>FIRM:</b> City and County of Honolulu Department of Planning and Permitting	<b>DATE</b> <b>FROM:</b> 01/05 <b>TO:</b> 09/12	<b>FIRM:</b> City and County of Honolulu Department of Corporation Counsel	<b>DATE</b> <b>FROM:</b> 04/01 <b>TO:</b> 12/04
<b>ADDRESS:</b> 650 South King Street, 7 <sup>th</sup> Floor, Honolulu, HI 96813		<b>ADDRESS:</b> 530 South King Street, Room 110, Honolulu, HI 96813	
<b>JOB TITLE:</b> Deputy Director then Director		<b>JOB TITLE:</b> Deputy Corporation Counsel – Land Use & Development	
<b>SUPERVISOR'S NAME AND TITLE:</b> Peter B. Carlisle, Mayor		<b>SUPERVISOR'S NAME AND TITLE:</b> David Z. Arakawa, Corporation Counsel	
<b>MAJOR DUTIES:</b> Provided leadership, administration and management for the department's 300 employees in the areas relating to long range planning, building and construction, and land use and development.		<b>MAJOR DUTIES:</b> Senior Deputy responsible for providing legal counsel to the Department of Planning and Permitting. Represented City before the Zoning Board of appeals and Building Board of Appeals.	

<b>FIRM:</b> AM Partners, Inc.	<b>DATE</b> <b>FROM:</b> 09/97 <b>TO:</b> 04/01	<b>FIRM:</b> Law Offices of Michael F. McCarthy	<b>DATE</b> <b>FROM:</b> 04/93 <b>TO:</b> 09/97
<b>ADDRESS:</b> 711 Queen Street, Honolulu, HI 96813		<b>ADDRESS:</b> 900 Fort Street, Suite 1500, Pioneer Plaza, Honolulu, HI 96813	
<b>JOB TITLE:</b> General Counsel and Director of Contracting		<b>JOB TITLE:</b> Counsel	
<b>SUPERVISOR'S NAME AND TITLE:</b> Charles Lau, President		<b>SUPERVISOR'S NAME AND TITLE:</b> Michael McCarthy, President	
<b>MAJOR DUTIES:</b> Provided leadership, direction and management of all legal and administrative matters relating to the firm on corporate and project levels.		<b>MAJOR DUTIES:</b> Business litigation.	

<b>NAME</b> <b>LUKE, CRAIG, PE</b>	<b>TITLE AND POSITION</b> <b>Vice President</b>	<b>YEARS WITH FIRM</b> <b>38</b>
<b>MAJOR RESPONSIBILITIES WITH THIS FIRM</b> Vice President and Senior Project Manager in RMTC's Civil Engineering Department.		

**PRIOR EMPLOYMENT**

(START WITH LATEST EMPLOYMENT PRIOR TO JOINING THIS FIRM AND PROVIDE SIMILAR INFORMATION FOR EACH SEPARATE EMPLOYMENT OR MAJOR CHANGES IN DUTIES WITH THE SAME EMPLOYER.)

<b>FIRM:</b> None	<b>FIRM:</b>
<b>ADDRESS:</b>	<b>ADDRESS:</b>
<b>JOB TITLE:</b>	<b>JOB TITLE:</b>
<b>SUPERVISOR'S NAME AND TITLE:</b>	<b>SUPERVISOR'S NAME AND TITLE:</b>
<b>MAJOR DUTIES:</b>	<b>MAJOR DUTIES:</b>

<b>FIRM:</b>	<b>FIRM:</b>
<b>ADDRESS:</b>	<b>ADDRESS:</b>
<b>JOB TITLE:</b>	<b>JOB TITLE:</b>
<b>SUPERVISOR'S NAME AND TITLE:</b>	<b>SUPERVISOR'S NAME AND TITLE:</b>
<b>MAJOR DUTIES:</b>	<b>MAJOR DUTIES:</b>

<b>NAME</b> <b>YUKUMOTO, KYLE, PE</b>	<b>TITLE AND POSITION</b> <b>Vice President</b>	<b>YEARS WITH FIRM</b> 29
<b>MAJOR RESPONSIBILITIES WITH THIS FIRM</b> Vice President and Manager of RMTTC's Wastewater Department		

**PRIOR EMPLOYMENT**

(START WITH LATEST EMPLOYMENT PRIOR TO JOINING THIS FIRM AND PROVIDE SIMILAR INFORMATION FOR EACH SEPARATE EMPLOYMENT OR MAJOR CHANGES IN DUTIES WITH THE SAME EMPLOYER.)

<b>FIRM:</b> None	<b>FIRM:</b>
<b>ADDRESS:</b>	<b>ADDRESS:</b>
<b>JOB TITLE:</b>	<b>JOB TITLE:</b>
<b>SUPERVISOR'S NAME AND TITLE:</b>	<b>SUPERVISOR'S NAME AND TITLE:</b>
<b>MAJOR DUTIES:</b>	<b>MAJOR DUTIES:</b>

<b>FIRM:</b>	<b>FIRM:</b>
<b>ADDRESS:</b>	<b>ADDRESS:</b>
<b>JOB TITLE:</b>	<b>JOB TITLE:</b>
<b>SUPERVISOR'S NAME AND TITLE:</b>	<b>SUPERVISOR'S NAME AND TITLE:</b>
<b>MAJOR DUTIES:</b>	<b>MAJOR DUTIES:</b>

<b>NAME</b> <b>YAMANISHI, JON</b>	<b>TITLE AND POSITION</b> <b>Treasurer</b>	<b>YEARS WITH FIRM</b> <b>&lt;1</b>
<b>MAJOR RESPONSIBILITIES WITH THIS FIRM</b> Treasurer and Manager of RMTc's Accounting Department.		

**PRIOR EMPLOYMENT**

(START WITH LATEST EMPLOYMENT PRIOR TO JOINING THIS FIRM AND PROVIDE SIMILAR INFORMATION FOR EACH SEPARATE EMPLOYMENT OR MAJOR CHANGES IN DUTIES WITH THE SAME EMPLOYER.)

<b>FIRM:</b> Hyatt Place Waikiki Beach	<b>DATE</b> <b>FROM: TO:</b> 12/2010 02/2024	<b>FIRM:</b> Resort Holdings, LLC	<b>DATE</b> <b>FROM: TO:</b> 04/2002 12/2010
<b>ADDRESS:</b> 175 Paoakalani Avenue, Honolulu, HI 96815		<b>ADDRESS:</b> 175 Paoakalani Avenue, Honolulu, HI 96815	
<b>JOB TITLE:</b> Controller		<b>JOB TITLE:</b> Corporate Controller	
<b>SUPERVISOR'S NAME AND TITLE:</b> Jim Melvin, VP Finance		<b>SUPERVISOR'S NAME AND TITLE:</b> Wayne Tanigawa, CFO	
<b>MAJOR DUTIES:</b> Monthly reporting to management company and owner. Day-to-day accounting department management. Monthly forecasting and annual budgeting.		<b>MAJOR DUTIES:</b> Manage accounting departments for three golf courses and two hotels. Prepare monthly consolidated financial statements.	

<b>FIRM:</b> Sato & Yamamoto CPAs	<b>DATE</b> <b>FROM: TO:</b> 1998 04/2002	<b>FIRM:</b> Jon Yamanishi, CPA	<b>DATE</b> <b>FROM: TO:</b> 1992 1998
<b>ADDRESS:</b> 1299 S. Beretania Street Suite 200, Honolulu, HI 96814		<b>ADDRESS:</b> 1953 S. Beretania Street, Honolulu, HI 96826	
<b>JOB TITLE:</b> Tax Manager		<b>JOB TITLE:</b> Sole Proprietor	
<b>SUPERVISOR'S NAME AND TITLE:</b> Garrett Yamamoto, Partner		<b>SUPERVISOR'S NAME AND TITLE:</b> N/A	
<b>MAJOR DUTIES:</b> Responsible for tax planning and compliance for business, individual, and fiduciary clients.		<b>MAJOR DUTIES:</b> Provide bookkeeping and tax services for individual and small business clients.	

<b>NAME</b> <b>INOUE, MICHAEL</b>	<b>TITLE AND POSITION</b> <b>Secretary</b>	<b>YEARS WITH FIRM</b> 39
<b>MAJOR RESPONSIBILITIES WITH THIS FIRM</b> Secretary and Manager of RMTc's Construction Management Department		

**PRIOR EMPLOYMENT**

(START WITH LATEST EMPLOYMENT PRIOR TO JOINING THIS FIRM AND PROVIDE SIMILAR INFORMATION FOR EACH SEPARATE EMPLOYMENT OR MAJOR CHANGES IN DUTIES WITH THE SAME EMPLOYER.)

<b>FIRM:</b> Keahole Associates, Inc	<b>DATE</b> <b>FROM:</b> 1997 <b>TO:</b> 2002	<b>FIRM:</b> R. M. Towill Corporation	<b>DATE</b> <b>FROM:</b> 1987 <b>TO:</b> 1997
<b>ADDRESS:</b> 73-200 Kupipi Street, Kailua-Kona, HI 96740		<b>ADDRESS:</b> 2024 North King Street, Suite 200, Honolulu, HI 96819	
<b>JOB TITLE:</b> Construction Engineer		<b>JOB TITLE:</b> Construction Engineer	
<b>SUPERVISOR'S NAME AND TITLE:</b> Frank Sanpei		<b>SUPERVISOR'S NAME AND TITLE:</b> Wallace Dung / Richard Eber	
<b>MAJOR DUTIES:</b> Providing construction management services for various construction project at the Keahole Kona International Airport.		<b>MAJOR DUTIES:</b> Providing construction management services for various construction projects on Oahu and the Big Island of Hawaii.	

<b>FIRM:</b>	<b>DATE</b> <b>FROM:</b>	<b>TO:</b>	<b>FIRM:</b>	<b>DATE</b> <b>FROM:</b>	<b>TO:</b>
<b>ADDRESS:</b>			<b>ADDRESS:</b>		
<b>JOB TITLE:</b>			<b>JOB TITLE:</b>		
<b>SUPERVISOR'S NAME AND TITLE:</b>			<b>SUPERVISOR'S NAME AND TITLE:</b>		
<b>MAJOR DUTIES:</b>			<b>MAJOR DUTIES:</b>		



R. M. TOWILL CORPORATION  
SINCE 1930



# 2024-2025 Statement of Qualifications

Contact: Greg Hiyakumoto, President [gregh@rmtowill.com](mailto:gregh@rmtowill.com)

2024 N. King Street, Suite 200 Honolulu, HI 96819-3494 [www.rmtowill.com](http://www.rmtowill.com) Tel: 808 842-1133 Fax: 808 842-1937  
Civil Engineering • Wastewater Engineering • Surveying & Mapping • Planning & Permitting • Construction Management



R. M. TOWILL CORPORATION  
SINCE 1930

## FIRM INTRODUCTION

**Serving Hawaii since 1930.** With 125 employees, the R. M. Towill Corporation (RMTC) is one of the largest locally owned engineering firms in the State of Hawaii. The firm's integrated services include civil engineering, wastewater engineering, surveying and photogrammetry, construction management, program management, land planning and permitting, and geographic information systems. RMTC's main office is located in Honolulu, Oahu and since 1979 we have maintained a branch office in Kailua-Kona on the island of Hawaii.

**Dedicated to our clients' needs.** Throughout the past nine decades, RMTC has serviced various federal, state and county agencies as well as private sector clients, each with their own set of objectives, requirements, concerns, and constraints. We make it a part of our business to understand the unique situation of each project we manage so that we can craft a comprehensive approach to the assignment and ultimately deliver effective, practical, and timely solutions.

**A diverse staff of industry experts.** Our large, diverse staff of licensed professional civil engineers, planners, environmental engineers, surveyors, certified construction managers and large technical pool provides RMTC with the flexibility to assign qualified personnel to various projects and to complete them in a timely manner, whether it be a typical project timeframe or fast-tracked assignment. In addition, RMTC encourages training across disciplines to promote continual professional growth of our people and technical diversity within the organization.

**Unparalleled project experience.** RMTC has managed a multitude of project types, varying greatly in size, scope, complexity, and cost. Throughout this document are examples of projects we have completed, categorized by field of service. Many of these assignments have involved multiple departments within our firm and have required the effective coordination of specialty subconsultants. Furthermore, we are familiar and well-experienced in facilitating projects that require interagency agreements on technical and institutional issues.

**Experience throughout the Pacific Rim.** Our experience extends well beyond the State of Hawaii into areas such as Diego Garcia, the Philippines, Japan, Okinawa, Korea, Mexico, Guam, Saipan, Tinian, Kwajalein, Palau, American Samoa, Johnston Atoll, Palmyra, Yap, and the Seychelles, where we have proven our ability to adapt to local conditions, customs, and culture to effectively complete our projects.

---

This **Statement of Qualifications** provides an overview of the key elements of RMTC's practice, professional staff, and past experience.

---

---

## TABLE OF CONTENTS

<b>Civil Engineering</b> .....	<b>1</b>
Highway and Roadway Design.....	1
Mass Transit.....	2
Subdivision and Housing .....	2
Harbors and Port Facilities .....	2
Site Planning and Design.....	3
ADA Compliance.....	3
Leadership in Energy and Environmental Design (LEED).....	4
Infrastructure Master Plans .....	4
Drainage Master Plans .....	4
Water System Planning and Design.....	5
Solid Waste.....	5
Flood Zone Determinations.....	6
Technical Personnel: Civil Engineering Department .....	7
<b>Environmental Engineering</b> .....	<b>9</b>
Wastewater Treatment Facilities - Design and Studies .....	9
Regional Wastewater Planning Studies.....	10
Wastewater Collection and Conveyance Systems .....	10
Small Wastewater Systems .....	10
Technical Personnel: Environmental Engineering Department.....	11
<b>Surveying &amp; Photogrammetry</b> .....	<b>12</b>
Surveying Services.....	12
Use of Advanced Technologies.....	12
Topographic Surveying.....	12
Boundary Surveying.....	13
Parcel Subdivision and Consolidation.....	13
Aerial Topographic Mapping.....	13
Cadastral Surveying .....	14
ALTA Surveying .....	14
Flood Elevation Certifications.....	14
Surveys Supporting Shoreline Certification Process .....	15
Recordation under the Land Court and Regular (Bureau of Conveyance) Systems .....	15
Technical Personnel: Surveying & Photogrammetry Department .....	15

---

---

## TABLE OF CONTENTS (CONT'D)

<b>Geographic Information Systems</b> .....	<b>16</b>
Technical Personnel: Geographic Information Systems.....	17
<b>Construction Management and Program Management</b> .....	<b>18</b>
Construction Management .....	18
Program Management.....	21
Technical Personnel: Construction Management Department .....	24
<b>Planning</b> .....	<b>28</b>
Land Planning and Permitting.....	28
Master Plans.....	28
Environmental Documentation (EISs, EAs).....	28
Land Use Entitlements and Permitting .....	29
Fiber Optic Cable Systems .....	30
Public Involvement Programs.....	30
Technical Personnel: Planning Department.....	31



# CIVIL ENGINEERING

## Highway and Roadway Design

RMTC has designed over 300 miles of roadways in Hawaii and the Pacific for county, state, federal, and private sector clients. Our designs have helped to relieve traffic congestion, provided added capacity for new developments and improved roadway safety. RMTC has also served as design team leader for the replacement of many roadway bridges throughout the state.

### Projects / Highway and Roadway Design

#### “Legacy” Projects

- Kualakai Parkway (North-South Road), Phases 1A, 1B and 1C, Oahu (2005-2010) (*right top*)
- Palau Compact Road, Package D, Island of Babeldaob, Republic of Palau (1997-2007) (*see award plaques, right bottom*)
- Interstate Route H-1 Waimalu Viaduct Widening, Westbound Direction, Kaonohi Street Overcrossing to Pearl City Off-Ramp, Oahu (2001-2007)

#### Additional Projects

- Kamehameha Highway, Kaipapau Stream Bridge Replacement, Oahu (ongoing)
- Farrington Highway, Replacement of Makaha Bridges 3 and 3A, Oahu (2022)
- Interstate Route H-1 Shoulder Work and PCC Pavement Rehabilitation, Oahu (2019, Design-Build)
- Kaunualii Highway Widening, Lihue Mill Bridge to Rice Street, Kauai (2015, Design-Build)
- Kamehameha Highway Improvements, Lanikuhana Avenue to Ka Uka Boulevard, Oahu (2011)
- Kapolei Parkway Extension, Phases 8A, 8B and 8C, Oahu (2010)
- Lauwiliwili Street Extension, Kalaeloa to Hanua, Oahu (2010)
- Opakapaka Street Extension, Kalaeloa to Hanua, Oahu (2010)
- Farrington Highway Safety Improvements, Nanakuli to Makaha, Oahu (2006)
- Keoneula Boulevard Extension, Oahu (2006)
- Likelike Highway, Wilson Tunnel and Approach Improvements, Oahu (2005)



RMTC designed the \$170-million, three-phase North-South Road for the State Department of Transportation in Kapolei, Oahu.



In 2009, RMTC was honored by two national engineering organizations for surveying and design work on the \$130-million, 53-mile Palau Compact Road in the Republic of Palau. Awards included **National Finalist and Excellence Award recognition** from the American Council of Engineering Companies (ACEC) and **Outstanding Major Project of the Year** from U.S. Region 8 of the American Society of Civil Engineers.

## Mass Transit

RMTC engineers, planners and surveyors have been involved in three phases of planning for mass transit facilities on Oahu for over a period of two decades. The firm was subconsultant to PB Americas, Inc., to conduct preliminary engineering and surveying for the rail mass transit facilities to be constructed on Oahu, a project with an estimated construction cost of \$10 billion. RMTC currently has active projects for surveying and engineering for the Honolulu Rail Transit Project.

## Subdivision and Housing

RMTC has the skill and experience to guide clients from project conception through design and construction. For projects varying in both size and complexity, RMTC has completed subdivision and housing utilities and sitework design on the islands of Oahu, Maui, Kauai, Hawaii, and Lanai.

RMTC's work on master planned communities throughout the state has involved thousands of acres and multiple years of planning and entitlements, followed by surveying, design and services during construction.

### Multi-Disciplinary, Multi-Year Work Supporting New Master Planned Communities

- Hoopili, Oahu
- Ocean Pointe, Oahu
- Villages of Kapolei, Oahu
- Ewa Villages Revitalization, Oahu
- West Loch, Oahu
- Kukuiula, Kauai
- Manele and Koele, Lanai
- Aina Lea, Hawaii Island
- Hokulia, Hawaii Island

### Additional Subdivision and Housing Projects

- Gentry Homes, Industrial Subdivision, Oahu (ongoing)
- Pauoa Valley Preserve Cluster Housing, Oahu (2014)
- Franciscan Vistas Ewa, Phases I and II, Oahu (2011)
- Kaloko Heights, Hawaii (2009)
- Puainako Heights, Hawaii (2008)

- Makana Kai, Wehilani at Waikoloa, Hawaii Island (2008)
- Waikoloa Highlands, Hawaii Island (2007)
- Nohona at Kapolei, Oahu (2006)
- Halsey Terrace and Radford Terrace, Oahu (2003-2006)
- Ukumehame Agricultural Subdivision, Maui (2006)
- Pearl City Industrial Park Subdivision, Oahu (2005)
- Waikoloa Heights, Hawaii Island (2005)

## Harbors and Port Facilities

RMTC's extensive, multi-disciplinary experience with port facility projects involves over \$500 million in harbor infrastructure design throughout the state. The firm also has been engaged by harbor users to plan and design major container yard reconfigurations, pavement repair and reconstruction, pier and terminal improvements, and other infrastructure and utility upgrades in Hawaii and the Pacific Region. RMTC recently completed the design of the largest capital improvement project in the history of Hawaii's commercial harbor system (Kapalama Container Terminal Yard).

### Projects / Harbors and Port Facilities

- Kapalama Container Terminal Yard, Honolulu Harbor, Oahu (2020)
- Pier 24-28 Utility Improvements, Honolulu Harbor, Oahu (2020)
- Nawiliwili Harbor Improvements, Kauai (2020)



*RMTC has designed over \$500 million in harbor infrastructure throughout the State of Hawaii.*

- Pier 29 Container Yard Reconstruction for Aloha Cargo Transport, Honolulu Harbor, Oahu (2012)
- Pier 2A Shed Demolition and Container Yard Improvements, Kawaihae Harbor, Hawaii Island (2009)
- Pier 39 and 40 Young Brothers Yard Reconfiguration, Honolulu Harbor, Oahu (2007)
- Matson Terminals Annex Yard, Honolulu, Oahu (2007)
- Pier 2 Cruise Terminal, Construction Management, Honolulu, Oahu (2006)
- Puunene Container Yard Reconstruction, Kahului Harbor, Maui (2005)
- Pier 51B Horizon Lines Container Yard Reconstruction, Honolulu, Oahu (2005)
- Reconstruction of Matson Container Yard, Piers 51C- 53, Honolulu, Oahu (2004)
- Piers 24 to 29 Auto Lot Improvements, Honolulu, Oahu (2004)
- Pier 19 Ferry Terminal, Construction Management, Honolulu, Oahu (2004)
- Pier 3 Young Brothers Container Yard Reconstruction, Kahului Harbor, Maui (2002)
- Pier 1C Expansion, Kahului Harbor, Maui (2002)

## Site Planning and Design

Site planning and design remains a core competency of our civil engineering practice. RMTC's engineers are often called upon to design utilities, roadways, parking lots, and other civil site improvements for new construction and renovation of existing facilities. The firm has been involved in many major building efforts for public agencies and private clients, including design-bid-build and design-build projects.

### Projects / Site Planning and Design

- \$170-million Kapalama Container Terminal Yard, Honolulu Harbor, Oahu (2022)
- \$22-million Central Maui Regional Sports Complex, Maui (2016)
- \$55-million Interisland Maintenance Terminal Site Preparation, Honolulu International Airport (2010, Design-Build)
- \$3-million (sitework only) Safeway Store at Kapahulu, Oahu (2008)



*RMTC engineers have been involved in the preliminary engineering and design of site infrastructure for numerous projects associated with the \$1.7 billion Honolulu International Airport Terminal Modernization program.*

- \$50-million Redevelopment of Navy Privatized Housing, Oahu (2007)
- \$70-million Frear Hall Replacement, University of Hawaii at Manoa, Oahu (LEED-certified Silver) (2006) (*next page*)
- \$21-million Haleakala Mirror Coating Facility, Maui Space Surveillance Site, Maui (2005)
- \$25-million Keoneula Elementary School, Ocean Pointe, Oahu (2004)
- \$25-million Medical/Dental Clinic Replacement, Andersen Air Force Base, Territory of Guam (2003)
- \$50-million NELHA Gateway Distributed Energy Resource Center, Kailua-Kona, Hawaii Island (LEED-certified Platinum) (2002)
- \$15-million Honolulu Advertiser Production and Distribution Facility, Oahu (2000)
- \$70-million Kapolei High School, Oahu (2000)

## ADA Compliance

RMTC has played a major role in assisting state and county agencies with Americans with Disabilities Act (ADA) compliance improvements for a wide range of public facilities including schools, playgrounds, parking lots, roadways, and pedestrian facilities. For the State of Hawaii, Department of Transportation, RMTC served as Master A/E for the Pedestrian Facilities and ADA Compliance program. This effort required management of 12 concurrent projects statewide and design by six individual civil engineering firms. Design and construction of approximately 1,600 curb ramps were completed within 15 months to meet a federal consent decree deadline.

### Projects / ADA Compliance

- Curb Ramps at Various Locations for the City and County of Honolulu, Oahu (2012)
- Farrington Highway Safety Improvements, Nanakuli to Makaha, Oahu (2006)

- Preassessment Services for Curb Ramps at Various Locations, Oahu (2004)
- Master A-E for Pedestrian Facilities and ADA Compliance, Oahu, Hawaii Island, Maui, Molokai and Kauai, Hawaii (2004)
- Kuhio Beach Improvements, Kalakaua Avenue, Oahu (2000)
- Kakaako Improvements District #9, Oahu (2004)
- Kamehameha Highway Resurfacing, Waiahole Valley Road to Crouching Lion Inn, Oahu (2001)

RMTC has also designed ADA *playground accessibility* improvements at various public schools on Oahu.

## Leadership in Energy and Environmental Design (LEED)

RMTC's civil engineers and planners continually work with clients and architectural firms seeking LEED building certification during the pre-design, design, and construction phases. Key staff members have already become LEED Accredited Professionals to efficiently identify and fulfill LEED requirements for credits relating to civil engineering.



*RMTC designed the civil sitework and obtained agency approvals for the construction of the new Frear Hall dormitory at the University of Hawaii at Manoa. It is certified LEED silver.*

## Infrastructure Master Plans

Comprehensive infrastructure master plans completed by RMTC range from islandwide infrastructure analyses, to redevelopment of military bases, to development of vacant lands.

## Projects / Infrastructure Master Plans

- Miki Basin Industrial Master Plan, Lanai (ongoing)
- Hoopili Infrastructure Master Plans, Oahu (2015)
- Farrington High School Long Range Development Plan, Oahu (2015)
- University of Hawaii Infrastructure Master Plan, Oahu (2013)
- Brigham Young University Hawaii Infrastructure Master Planning, Oahu (2012)
- Makaiwa Hills Infrastructure Master Plan, Oahu (2012)
- Hawaii Community College – Manono Campus Long Range Development Plan, Hawaii Island (2011)
- Lanai High and Elementary School Expansion Master Plan, Lanai (2009)
- Oahu Integrated Resources Planning Project (Comprehensive Planning of Water Resource Management and Development Strategies), Oahu (2006)
- Ocean Pointe Master Planned Community Infrastructure Master Plan, Oahu (2004)
- Barbers Point Naval Air Station (Kalaeloa) Community Redevelopment Plan, Oahu (2001)
- Keahole Airport Master Plan, Hawaii Island (2001)
- Manele and Koele Master Plans, Lanai (2000)
- Tripler Army Medical Center Utility Improvement and Real Property Master Plan, Oahu (1999)
- Ewa Villages Revitalization Master Plan, Oahu (1996)
- Villages of Kapolei Infrastructure Master Plan, Oahu (1994)

## Drainage Master Plans

A recognized leader in hydrology and hydraulics in Hawaii, RMTC has performed regional drainage analyses throughout the State. RMTC's drainage master plans evaluate existing drainage conditions, leading to conceptual designs for flood control infrastructure. RMTC's drainage solutions have been successfully incorporated into community amenities, such as golf courses and parks, and frequently involve principles of sustainability and watershed management. RMTC has completed regional drainage master plans on Oahu, Maui, Lanai, Kauai, and Hawaii.



The 18-hole, Ernie Els-designed Hoakalei Golf Course at Ocean Pointe.



## Projects / Drainage Master Plans

### 2010-ongoing

- Kalaeloa Parcels 1, 2, and 3, Subdivision and Drainage Master Plan, Oahu (2019)
- Kapolei West Drainage Master Plan, Oahu (2014)
- Makaiwa Hills Drainage Master Plan, Oahu (2012)
- Kapolei Harborside Drainage Master Plan, Oahu (2011)

### 2000-2009

- Kukuiula Master Planned Community, Drainage Master Plan, Kauai (2009)
- Kihei Drainage Master Plan, Waikoloa Gulch (Site Plan), Maui (2009)
- Honoapu Drainage Master Plan, Hawaii Island (2009)
- Hoakalei Golf Course Drainage Plan, Ocean Pointe Master Planned Community, Oahu (2008) (*above*)
- Kahuku Drainage Master Plan, Oahu (2008)
- Tripler Army Medical Center Drainage Improvements, Oahu (2006)
- Laie Regional Drainage Master Plan, Oahu (2006)
- Manele Resort Regional Drainage Master Plan, Lanai (2003)

- Koele Resort Regional Drainage Master Plan, Lanai (2003)
- Lanai City Drainage Master Plan, Lanai (2003)
- East Kapolei Drainage Master Plan, Oahu (2000)

### 1990-1999

- Ewa Villages Revitalization, Oahu (1996)
- West Loch Master Planned Community Drainage Master Plan, Oahu (1992)

### Prior to 1990

- Villages of Kapolei Drainage Master Plan, Oahu (1987)

## Water System Planning and Design

RMTC's professional experience spans regional and island-wide potable water master planning, as well as water source development, treatment, transmission, distribution, and storage systems.

The firm has designed water systems for residential and commercial developments, schools, and industrial and military facilities.

Clients have included water supply departments of all Hawaii's counties, State agencies, and all branches of the military. RMTC's familiarity with government regulations and the firm's productive working relationships with agency staff are key advantages when applying for approval of water system designs.

### Projects / Water System Planning and Design

- Schofield and Aliamanu Military Reservation Water Lines Replacements and Improvements, Oahu (2024)
- Auloa Road and Ulukahiki Street 16-inch Water Mains, Oahu (2023)
- Kalaeloa Water Master Plan and Leak Detection Investigation, Oahu (2020)
- Kaei Hana II Industrial Water Tank, Hawaii Island (2013)
- Eleele Water System Study, Kauai (2010)
- Kamehameha Highway to Heeia Street 16" and 8" Water Mains, Oahu (2006)
- Kalihi Water System Improvements, 16", 12", 8", and 2" Water Lines, Oahu (2006)
- Kalakaua Avenue 16" Water Main, Part II, Beretania Street to Paki Avenue, Oahu (2004)
- Farrington Highway, Part IV, Lawaia Street to Jade Street 24", 12", and 8" Water Mains, Oahu (2003)

## Solid Waste

RMTC is experienced in the design of sanitary landfills utilizing the most current design standards and applicable state and federal regulations. The firm also has been actively involved in landfill site selection studies and environmental documentation and permitting requirements.

### Projects / Sanitary Landfill Design, Planning, Permitting and Environmental Documentation

- New Kauai Landfill Planning and EIS, Kauai (2020)
- Central Maui Landfill Maintenance Facility PER, Maui (2010)
- County of Kauai Landfill Site Selection Planning, Kauai (2009)
- Waimanalo Gulch Sanitary Landfill Lateral Expansion Environmental Impact Statement, Oahu (2006)
- Study of Oahu Municipal Refuse Disposal Alternatives, Oahu (2004)
- Island-Wide Landfill Site Selection Planning, Oahu (2003)
- Waimanalo Gulch Sanitary Landfill Expansion EIS, Oahu (2002) (*below*)
- Central Maui Sanitary Landfill, Phases I-IV, Maui (1990-2002)



*RMTC planners have been involved in securing environmental entitlements and permitting for Oahu's Waimanalo Gulch Sanitary Landfill since 2002.*

RMTC also has provided technical planning services for landfill closures. The closure plans have addressed regulations concerning test pits, fill material segregation, and ambient air monitoring.

### Projects / Sanitary Landfill Closures

- Pohakuloa Training Area Sanitary Landfill, Hawaii (1995)
- Puuwaawaa Ranch Landfill Closure Investigation, Hawaii (1994)

## Flood Zone Determinations

RMTC has conducted numerous detailed riverine flood studies for the U.S. Army Corps of Engineers (USACE) and the Federal Emergency Management Agency (FEMA). The firm's hydrologists are currently conducting flood studies throughout the Pacific as part of FEMA's nationwide upgrade to the Digital Flood Insurance Rate Map (DFIRM) format. To produce detailed base maps meeting FEMA standards, RMTC has conducted flood plain mapping, using both aerial methods and ground surveys, as well as computerized hydraulic analyses to determine flood elevations and inundation limits.

### Projects / DFIRM and Riverine Flood Studies

- South Kona Flood Study, Hawaii Island (2015)
- Coastal and Riverine Flood Insurance Studies/ Restudies throughout FEMA Region IX, including Hawaii, Guam, American Samoa, and CNMI (2009)
- Puukapu Flood Study, Hawaii Island (2008)
- Kihei Flood Study, Maui (2007)
- Waiakea Stream Flood Study, Hawaii Island (2005)
- FEMA Flood Insurance Study, Rota, Commonwealth of the Northern Mariana Islands (2000) (*below*)



*RMTC prepared an engineering planning study for flooding and drainage problems within Sinapalu Village on the Island of Rota. The hydrologic and hydraulic analyses were performed to identify flood hazards within the village.*

*Technical Personnel: Civil Engineering Department*

<b>Name Title</b>	<b>Years of Professional Experience</b>	<b>Professional Engineer (PE), Civil - Hawaii</b>	<b>B.S. Civil Eng.</b>	<b>M.S. Civil Eng.</b>	<b>LEED AP / GA</b>
<b>Lam, Collins</b>   Vice President / Manager, Civil Engineering Department	29	■	■	■	
<b>Yamamoto, James</b>   Vice President / Senior Civil Project Manager	45	■	■	■	
<b>Luke, Craig</b>   Vice President/ Senior Civil Project Manager	38	■	■		
<b>Mendes, Kevin</b>   Civil Project Manager	35	■	■		■
<b>Armstrong, Stacy</b>   Civil Project Manager	34	■	■		■
<b>Okamoto, Michael</b>   Civil Project Manager	32	■	■		■
<b>Nakaoka, Brent</b>   Civil Project Manager	25	■	■		■
<b>Chong, Walter</b>   Civil Project Manager	34	■	■		
<b>Ring, Gordon</b>   Civil Project Manager	31	■	■		■
<b>Tateishi, Jason</b>   Civil Project Manager	20	■	■		
<b>Nakamura, Michael</b>   Senior Civil Engineer	22	■	■		
<b>Miyashiro, Waylen</b>   Senior Civil Engineer	20	■	■		
<b>Du, Chi</b>   Senior Civil Engineer	18	■	■		
<b>Tom, Gregory</b>   Senior Civil Engineer	19	■	■		■
<b>Yong, Randall</b>   Senior Civil Engineer	21	■	■		■
<b>Liao, Tsung-I</b>   Senior Civil Engineer	21	■	■	■	
<b>Inaba, Darren</b>   Civil Engineer	12	■	■	■	
<b>Ichikawa, Daniel</b>   Civil Engineer	11	■	■		
<b>Luke, Cristina</b>   Civil Engineer	10	■	■		
<b>Hong, Rayshi</b>   Civil Engineer	10	■	■		
<b>Bissen, Brian</b>   Civil Engineer	5	■	■		
<b>Shon, Jessica</b>   Assistant Engineer II	7	EIT	■		
<b>Ninomiya, Matthew</b>   Assistant Engineer II	5		■		
<b>Co, Christopher</b>   Assistant Engineer II	5	EIT	■		
<b>Fong, Dylan</b>   Assistant Engineer I	4	EIT	■		

<b>Name Title</b>	<b>Years of Professional Experience</b>	<b>Professional Engineer (PE), Civil - Hawaii</b>	<b>B.S. Civil Eng.</b>	<b>M.S. Civil Eng.</b>	<b>LEED AP / GA</b>
<b>Remo, Luigi</b>   Assistant Engineer I	4		■		
<b>Kamikawa, Keenan</b>   Assistant Engineer I	2		■		
<b>Yu, Andrew</b>   Assistant Engineer I	2	EIT	■		
<b>Watanabe, Alyssa</b>   Assistant Engineer I	1	EIT	■		
<b>Chun, Marissa</b>   Assistant Engineer I	1	EIT	■	■	
<b>Apelu, Dylan</b>   Assistant Engineer I	1	EIT	■		
<b>Bernal, Jett</b>   Assistant Engineer I	1	EIT	■		ENV SP
<b>Ching, Benton</b>   GIS and Geospatial Coordinator	41	■	■	■ Coastal Eng.	
<b>TOTAL</b>	<b>33 people</b>	<b>23</b>	<b>33</b>	<b>6</b>	<b>7</b>

Note: EIT = Engineer-in-Training

## ENVIRONMENTAL ENGINEERING

RMTC has completed wastewater treatment and collection system designs and numerous wastewater and water environment planning studies. The firm's environmental engineering practice was organized before the passage of the Federal Water Pollution Control Act in 1972 (renamed the Clean Water Act). RMTC continues to have a large presence in wastewater and water quality engineering with its design of the Sand Island Wastewater Treatment Plant (WWTP) Headworks and Primary Clarifiers projects.

The geographic range of the firm's wastewater work has extended from metropolitan Honolulu to the remote Pacific regions of American Samoa, Palau, Ebeye, and South Korea. Facilities have ranged in size from individual systems for private homes, to systems sized for small communities, to the 90-mgd Sand Island WWTP serving metropolitan Honolulu (*right*). RMTC has recently completed the design for a major renovation of the facility.

### Wastewater Treatment Facilities – Design and Studies

RMTC has designed wastewater treatment plants throughout Hawaii and the Pacific region. Projects range from completely new facilities to complex phased upgrades and expansions, both of varying sizes.

#### Projects / Wastewater Treatment Facilities - System Designs

- Sand Island WWTP, Secondary Treatment, Phase 2, Oahu (Ongoing)
- Honouliuli WWTP, Secondary Treatment, Oahu (ongoing)
- Sand Island WWTP Primary Expansion, Phase 2, Reconstruction, Oahu (2013)
- Eleele WWTP Plant Process Equipment Upgrades, Kauai (2012)
- Sand Island WWTP Expansion, Phase 1, Odor Control System, Oahu (2008)
- Sand Island WWTP Expansion – New Headworks and Primary Clarifiers, Oahu (2006)

- Pukalani WWTP Expansion: Design-Build Construction Plans, Maui (2006)
- Lihue WWTP Cleaning and Repair of Anaerobic Digesters, Kauai (2002)
- Kona International Airport Wastewater Reclamation System, Hawaii (2000)

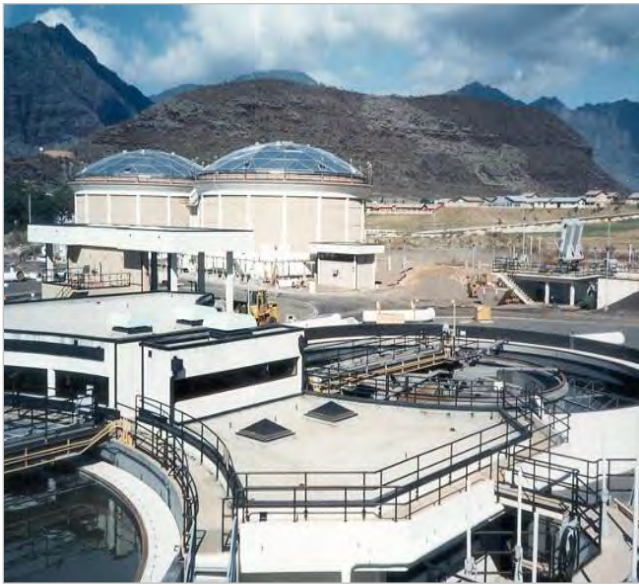


*The Sand Island 82-mgd Wastewater Treatment Plant (WWTP) is the State of Hawaii's largest, serving metropolitan Honolulu. Beginning in 2006, RMTC provided the design for two upgrade and modernization projects totaling over \$70 million in construction cost.*

RMTC engineers prepare a variety of planning studies to assist clients in determining the appropriate design requirements for wastewater systems, wastewater facilities, and components of those facilities.

#### Projects / Wastewater Treatment Facilities - Planning Studies

- Sand Island WWTP Membrane Bioreactor Secondary Update Option, Oahu (2019)
- Princeville WWTP Evaluation, Kauai (2007)
- Manele WWTP Expansion Alternatives Study, Lanai (2007)
- Kaupulehu WWTP Optimization and Facility Planning, Hawaii Island (2006)
- Sand Island WWTP Design Report for Headworks, Primary Clarifiers and Solids Handling, Oahu (2001)
- Waianae WWTP Secondary Upgrades, Oahu (1994) (*next page*)



*RMTC's design work for wastewater facilities in West Oahu began in the early 1980s with the Honouliuli Wastewater Treatment Plant. Later, RMTC designed secondary upgrade improvements to the regional Waianae WWTP, shown above.*

## Regional Wastewater Planning Studies

Many of RMTC's wastewater projects have been regional or islandwide in scope. Projects listed below do not deal with a particular WWTP, but rather multiple facilities within a larger region. The projects listed below have enabled RMTC to gain insight into all of the major WWTPs and pumping station facilities on Oahu.

### Projects / Regional Wastewater Planning Studies

- Sand Island WWTP and Sewer Basin Facilities Plan, Oahu (2020)
- Hualalai Wastewater Treatment Plant Expansion Study, Hawaii Island (2013)
- Licensing of Department of Hawaiian Home Lands Sewers to the City and County of Honolulu, Oahu (2009)
- Ocean Pointe Consolidated Sewer Master Plan, Oahu (2008)
- Turtle Bay Sewer Master Plan, Oahu (2006)
- Lanai Utility Management (Wastewater, Water, Electrical Systems), Lanai (2005)
- Laie Wastewater Pump Station and Collection System Expansion, Oahu (2003)
- Islandwide Spill Containment / Spill Response Plan for the City and County of Honolulu, Oahu (1997)
- Islandwide Wastewater Planning Study for the U.S. Department of Defense, Oahu (1996)

## Wastewater Collection and Conveyance Systems

RMTC has provided design services for numerous wastewater conveyance systems. These systems include pump station and force main studies and designs and sewer system studies. Other related work includes repairs of sewers and normal gravity and new low-pressure sewer system designs.

### Projects / Collection and Conveyance Systems

- Papakolea Sewer System Improvements, Oahu (ongoing)
- Papakolea Sewer System Condition Assessment, Oahu (2012)
- Fort DeRussy Wastewater Pump Station Modification, Oahu (2009)
- Beachwalk Wastewater Pump Station to Ala Moana Park Sewer, Phase I, Force Main, Oahu (2009)
- Beachwalk Pump Station Condition Assessment, Oahu (2008)
- Ala Moana to Kapiolani Boulevard Trunk Sewer Rehabilitation / Replacement Analysis, Oahu (2005)

## Small Wastewater Systems

RMTC also has completed analysis and design for numerous small-scale wastewater systems, including "cesspool conversions." Over the past few years there has been a demand for the closure or conversion of existing large-capacity cesspools in response to a ban on such cesspools by the United States Environmental Protection Agency. Conversion designs and installations have been completed on Oahu, Maui, and Hawaii. In the majority of situations, RMTC's replacement designs featured septic tanks and leach fields or converted seepage pits.

### Projects / Small Wastewater Systems

- Kamehameha Schools Cesspool Remediation Project, Statewide (ongoing)
- Large Capacity Cesspool Conversion Valley of the Temples, Oahu (2005)
- Dillingham Ranch House Individual Wastewater System, Oahu (2005)
- Mauna Kea Golf Course Cesspool Conversion, Hawaii Island (2005)
- Kinoole Cesspool Conversion, Oahu (2005)

*Technical Personnel: Environmental Engineering Department*

<b>Name Title</b>	<b>Years of Professional Experience</b>	<b>Professional Engineer (PE), Civil - Hawaii</b>	<b>B.S. Env. / Civil Eng.</b>	<b>M.S. Env. / Civil Eng. or Higher</b>	<b>LEED AP / GA</b>
<b>Yukumoto, Kyle</b> Vice President / Manager, Environmental Engineering Department	29	■	■	■	
<b>Nishikawa, Jaime</b> Environmental Project Manager	22	■	■	■	■
<b>Wong, Tiow Ping</b> Chief of Wastewater Technology	23	■	■	■	
<b>Miyasato, Ann</b> Environmental Project Coordinator	23	■	■	■	■
<b>Tasaka, Jayson</b> Senior Environmental Engineer	11	■	■	■	
<b>Imanaka, Nicole</b> Environmental Engineer	11	■	■		ENV SP
<b>Tsuchida, Tyler</b> Environmental Engineer	8	■	■	■	
<b>Ichikawa, Chelsea</b> Environmental Engineer	9	■	■		
<b>Asper, Joshua</b> Environmental Engineer	5	■	■		
<b>Suda, Jonathan</b> Assistant Engineer II	5	EIT	■		
<b>Lee, Sheldon</b> Assistant Engineer I	4		■		
<b>Washino, Steven</b> Assistant Engineer I	4	EIT	■		
<b>Kagamida, Connor</b> Assistant Engineer I	3	EIT	■	■	ENV SP
<b>Ancheta, Jacen</b> Assistant Engineer I	2		■	■	
<b>Fong, Sue</b> Senior Draftsperson / CADD Technician	30		A.S. ARCH. DRAFTING		
<b>Tsutsul, Blake</b> Design Visualization Artist	11		A.S. GRAPHIC DESIGN		
<b>TOTAL</b>	<b>16 people</b>	<b>9</b>	<b>14</b>	<b>8</b>	<b>2</b>

Note: EIT = Engineer-in-Training

## SURVEYING & PHOTOGRAMMETRY

RMTC has one of the largest surveying practices in the State of Hawaii. RMTC has three licensed surveyors plus experienced and technically proficient surveying field crews on two islands (Oahu and Hawaii). The firm's surveying capabilities are complemented by an extensive aerial photography library of Hawaii and the Pacific dating back to 1949. RMTC offers a full range of aerial photogrammetry services including digital orthophotography.

### Surveying Services

RMTC's Surveying Department has the capability to provide a full range of surveying and related services including:

- Construction stakeout surveys
- Boundary surveys
- Land title surveys
- Aerial photography and aerial topographic surveys
- American Land Title Association (ALTA) surveys
- Digital terrain modeling
- Global positioning system (GPS) surveys
- As-built surveys
- Shoreline certification
- Preliminary and final design layouts
- Consolidation and subdivision applications

### Use of Advanced Technologies

RMTC has steadily kept pace with new surveying and mapping technologies. Examples include:

- Furthered existing "Scan-to-BIM", and "Scan-to-CAD" workflows by acquiring a model of the fastest laser scanner on the market, Leica Geosystem's RTC 360.
- Dual frequency Global Positioning System (GPS) surveying, including kinematic techniques
- Aerial photo control using airborne GPS combined with an inertial measurement unit (IMU)

- Softcopy photogrammetry technology, including automated and semi-automated extraction of Digital Elevation Model (DEM) data and preparation of high resolution digital orthophotography.



*RMTC surveyors conduct field surveys utilizing the latest in GPS technology: the Trimble R10 GNSS System.*

### Topographic Surveying

RMTC performs hundreds of surveys each year, a vast number of which are topographic surveys for projects throughout Hawaii. From small residential lots to projects encompassing thousands of acres, each survey assignment is analyzed to determine the most cost-effective method to meet project requirements. For topographic surveys of less densely vegetated areas over 25 acres in size, RMTC often utilizes in-house capabilities in aerial photogrammetry to yield cost and time savings.

#### Projects / Topographic Surveying

- Honolulu Rail Transit Project, Real Estate Mapping and Surveying, Oahu (ongoing)
- Kapalama Container Terminal Yard, Honolulu Harbor, Oahu (2015)
- Nuuanu Reservoir, Oahu (2015)
- Puukapu Pastoral Lots Water System, Surveying and Traffic Improvements, Hawaii Island (2014)
- Kalakaua Avenue Sidewalks, Oahu (2011)
- Hoakalei Country Club, Oahu (2009)
- Waialua Surveying, Various Parcels, Oahu (2008)
- Ewa Lot 16915 and 16916 Consolidation and Resubdivision, Oahu (2007)
- Marconi Point Subdivision of Lot 160-B, Oahu (2006)
- Ewa Villages Extension of Kapolei Parkway, Phase 8A, 8B, and 8C, Oahu (2005)

- North-South Road Phase 1A, 1B, and 1C, Oahu (2004)



*RMTC surveyors perform a topographic survey at the Daniel K. Inouye International Airport, Oahu.*

## Boundary Surveying

RMTC is proud of its long history of performing boundary surveys throughout the State of Hawaii. These have been performed for both small properties and large land tracts of up to 10,000+ acres.

### Projects / Boundary Surveys

- Metes and Bounds Survey, Legal Description and Monumentation for Oahu and Big Island Army Training Lands Leased from State of Hawaii Island (2023)
- Pupukeya Rockfall Assessment, Boundary Survey and Topographic Mapping, Oahu (2022)
- Huleia National Wildlife Refuge, Kauai (2012)
- Pohakuloa Training Area (PTA) West Land Acquisition RFP Preparation, Aerial Topographic Survey and Metes and Bounds Survey, Hawaii Island (1010 acres), for the U.S. Army Corps of Engineers (2009)
- Wehilani at Waikoloa Boundary Survey, Hawaii Island (2008)
- Boundary Survey for the Old Volcano Trail, Hawaii Island (2006)

## Parcel Subdivision and Consolidation

RMTC surveyors understand the requirements and are experienced in the preparation, filing and recordation of subdivisions under the Land Court and Regular System.

### Projects / Parcel Subdivision and Consolidation

- Various Agricultural Lot Subdivisions, Oahu (Ongoing)
- Turtle Bay Subdivision Mapping, Shoreline Surveying, and Conservation Easements for Turtle Bay Resort, Oahu (2019)
- Subdivision of Various Parcels and Land Court Approval, Waialua and Mokuleia, Oahu (2008)
- Honuapo Ranch, Consolidation and Resubdivision, Hawaii Island (2008)
- Hamakua Property Consolidation and Resubdivision, Hawaii Island (2008)
- Onomea-Kaupakauea Consolidation and Resubdivision, Hawaii Island (2007)
- Ewa Lot 16915 and 16916 Consolidation and Resubdivision, Oahu, (2007)

## Aerial Topographic Mapping

RMTC has long been an industry innovator and leader in the field of photogrammetry. Aerial topographic mapping has proven particularly effective in surveying large expanses of unvegetated lava fields on Hawaii and for any project requiring topographic information for large parcels.

RMTC developed and patented a process which combined topographic line data with an orthophoto image and was the first surveying firm in Hawaii to introduce aerial photography for roadway planning.

### Projects / Aerial Topographic Mapping

- Kalaeloa Parcels 1, 2, and 3, Oahu (2022)
- Aerial Mapping and Topographic Survey and Cadastral Mapping of University of Hawaii West Oahu, Oahu (2020)
- Aerial Topographic Mapping and Digital Orthophoto of Lihue Airport, Kauai (2016)
- Lanai Airport, Lanai (2013)
- Saddle Road, West Side, Hawaii Island (2010)
- Makakilo Drive Extension, Oahu (2009)
- Route 11 Mapping, Hawaii Island (2009)
- Route 130 Mapping, Hawaii Island (2009)
- Pohakuloa Training Area (PTA) West Land Acquisition RFP Preparation, Aerial Topographic Survey and Metes and Bounds Survey, Hawaii Island (2009)
- Kona International Airport Terminal Expansion, Hawaii Island (2009)
- Lanai Affordable Housing Area, Lanai (2009)

- Moaula Planned Unit Community, Molokai (2008)
- Makakilo Quarry, Oahu (2008)
- Mamalahoa Bypass Road, Roadway Alignment and Right-of-Way Mapping, Hawaii Island (2008)
- Honolulu High-Capacity Rail Transit Corridor Project, Oahu (2007)
- Eleele Urban Expansion Aerial Topographic Mapping, Kauai (2007)
- Kaena Point Water System, Oahu (2007)
- Leeward Bikeway, Waipio Access Point Road to Lualualei Naval Road, Oahu (2007)
- Waikoloa Lots, Hawaii Island (2006)
- Waiakea Stream Flood Control, Hawaii Island (2006)
- Aina Lea Development, Phase 1, Increment 1, Hawaii Island (2005)
- North-South Road, Phase 1C, Oahu (2007); Phases 1A and 1B, Oahu (2005)
- Villages of Kapolei, Village 6, Maluohai, Oahu (2001)
- Farrington Highway Safety Improvements, Nanakuli to Makaha, Oahu (2000) (*below*)



For the 17-mile Farrington Highway Safety Improvements project, RMTC engineers used aerial topographic surveys to support civil design.

## Cadastral Surveying

Surveys that are performed for the purpose of determining land boundaries, for the subdivision of parcels of land, and for the registration and transfer of property, are generally referred to as cadastral surveys. RMTC has conducted more

cadastral surveys than any other surveying firm in the State.

## Projects / Cadastral Surveying

- Cadastral Mapping, University of Hawaii West Oahu, Oahu, HI (2021)
- Cadastral Exhibit Mapping – Waikoloa, Hawaii Island (2020)
- Makena Resort Control Monuments, Maui (2008)
- Hualalai Vistas Subdivision, Hawaii Island (2008)
- Waikoloa Highlands Golf Course and Subdivision, Hawaii Island (2006)

## ALTA Surveying

ALTA (American Land Title Association) surveys are performed according to the “Accuracy Standards for Land Title Surveys” which are used nationally to ensure consistency of results and documentation. RMTC surveyors have performed hundreds of such surveys, primarily to support resort and commercial development throughout the State of Hawaii.

## Projects / ALTA Surveying

- Various Wailea Maui Properties ALTA/NSPS Land Title Surveys, Maui (Ongoing)
- Lihue Industrial Park, Kauai (2017)
- Kahului Airport Industrial Subdivision, Maui (2017)
- Kapolei Business Park, Oahu (2016)
- King Kamehameha Kona Beach Hotel, Hawaii (2016)
- Waipahu Industrial Park, Oahu (2015)
- Navy Family Housing PPV, Oahu (2012)
- Pagoda Hotel, Oahu (2010)
- Hilo Medical Building, Hawaii (2008)
- Orchid at Mauna Lani Resort, Hawaii (2008)
- Princeville at Hanalei, Kauai (2006, 2016)

## Flood Elevation Certifications

RMTC also has prepared Flood Elevation Certifications for real estate firms. The Flood Elevation Certificate is an important administrative tool of the National Flood Insurance Program (NFIP). This certificate, used only to certify building elevations, is used to provide elevation information to ensure compliance with floodplain management ordinances, determine insurance premium rates, and

support a request for a Letter of Map Amendment (LOMA) or Letter of Map Revision (LOMR).

## Surveys Supporting Shoreline Certification Process

Because many of Hawaii’s premier resorts and resort-oriented residences are waterfront properties, RMTTC surveyors have extensive experience with performing surveys needed to obtain shoreline certification.

The firm has performed this work throughout Hawaii, Oahu, Lanai, and Maui.

### Projects / Surveys for Shoreline Certification

- Turtle Bay Resort (ongoing)
- Wailea Renaissance Resort, Maui (2008)
- Hualalai Resort, Hawaii Island (2008)
- 49 Black Sand Beach, Hawaii Island (2008)
- Club Lanai, Hulupoe, Lanai (2006)

## Recordation under the Land Court and Regular (Bureau of Conveyances) Systems

RMTTC surveyors understand the requirements and actively practice the preparation, filing, and recordation of subdivisions under both the Hawaii Land Court and regular (Bureau of Conveyances) systems.

### Projects / Recordation

- Waialua Surveying, Various Parcels, Oahu (Ongoing)
- Kapolei Village Center Design, Oahu (2008)
- Ewa Lot 16915 and 16916 Consolidation and Resubdivision, Oahu (2007)
- Marconi Point Subdivision of Lot 160-B, Oahu (2006)
- Kapolei Village #2, Rentals, Oahu (2006)
- Kapolei Village #5, Affordable Housing, Oahu (2006)
- Kapolei High School Fort Barrett Road Driveway, Oahu (2006)
- Ewa Villages Extension of Kapolei Parkway, Phase 8A, 8B and 8C, Oahu (2005)
- North-South Road Parcel Maps, Oahu (2004)
- Farrington Highway, Replacement of Makaha Bridges 3 and 3A, Oahu (2004)

### Technical Personnel: Surveying & Photogrammetry Department

Name Title	Years of Professional Experience	Licensed Land Surveyor, Hawaii	Licensed, Land Court, Hawaii	B.S. Civil Eng.
<b>Tanoue, David</b> Vice President / Manager, Surveying & Planning Departments	34			Juris Doctor*
<b>Suzuki, Ryan</b> Surveying Project Manager	29	■	■	■
<b>Bumanglag, Al Greg</b> Surveyor	40			
<b>Valdez, Benjamin</b> Surveying Party Chief / Photogrammetrist	37	■		■
<b>Gonzales, Donna</b> Surveyor	11	■		■
<b>Toba, Daniel</b> Assistant Surveyor II	18			■
<b>Mashiyama, Nathan</b> Assistant Surveyor I	3			■
<b>TOTAL</b>	<b>7 people + 5 field crews</b>	<b>3</b>	<b>1</b>	<b>5</b>

\*Mr. Tanoue is a licensed attorney (Hawaii State Bar Association).

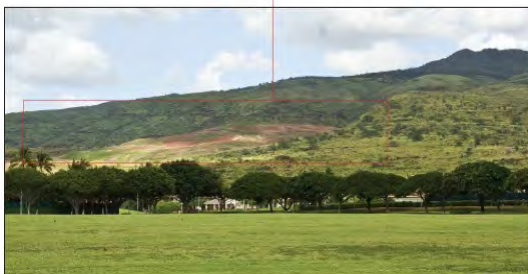
## GEOGRAPHIC INFORMATION SYSTEMS (GIS)

Since 1993, RMTTC has provided GIS services for numerous public and private entities on a diverse array of projects. We have significant experience with GIS and Facilities Management Systems (FMS), from gathering data that will be used in our client's system to the actual development of the database and maps. For Federal, State and County agencies and the military, as well as private clients, RMTTC has compiled digital mapping data to be used as the geographical basis for the GIS or FMS systems for planning and engineering analysis.

### Projects / Geographic Information Systems

- Honolulu Harbor Master Plan, Oahu (ongoing)
- Kahului Airport Master Plan Update, Maui (2017)
- South Hilo Farms Soil and Water Conservation Plans, Hawaii Island (2013)
- Oahu Landfill Siting Project, Oahu (2013)
- South Kona Flood Study, Hawaii Island (2013)
- Stream Diversion Study, Statewide (2009)
- Digital Flood Insurance Rate Mapping and FIS Text Production, Oahu (2009)
- Kamehameha Schools, Non-Residential Land Inventory, Oahu (2009)
- Kamehameha Schools, Kapalama Campus, Utility System Mapping (Conversion of Survey Map to GIS Files), Oahu (2008)
- Maui Public Facilities Inventory, Maui (2007)
- Lanai 911 GIS Mapping, Lanai (2007)
- Waimanalo Gulch Sanitary Landfill Lateral Expansion, Oahu (2004) (*below*)
- Road Asset Inventory, Hawaii Island (2004)
- Statewide Airport Asbestos Abatement Study, Statewide (2003)
- GIS Project File Development for Guam Conservation Mapping of U.S. Naval Installations, Territory of Guam (1999)
- Tripler Army Medical Center Master Plan, Oahu (1998)

**View of Waimanalo Gulch**  
Ko Olina, Second Lagoon Road



Permitted



5 Years



10 Years



15 Years

*For the Waimanalo Gulch Sanitary Landfill Lateral Expansion Environmental Impact Statement, ArcGIS's 3D mapping capability was used to illustrate the area of the landfill expansion and simulate its relative mass from different physical viewpoints in the community.*

*Technical Personnel: Geographic Information Systems*

<b>Name Title</b>	<b>Years of Professional Experience</b>	<b>Licensed In Hawaii</b>	<b>B.S. Civil or Equivalent</b>	<b>M.S. Civil or Equivalent</b>
<b>Yamamoto, James</b> Vice President / Senior Civil Project Manager	45	PE	■	■
<b>Ching, Benton</b> GIS and Geospatial Coordinator	41	PE	■	■
<b>Suzuki, Ryan</b> Surveying Project Manager / GIS Specialist	29	LLS / LLC	■	
<b>Niermann, James</b> Planning Project Coordinator / GIS Specialist	28	AICP		■*
<b>Liao, Tsung-I</b> Senior Civil Engineer / GIS Specialist	21	PE	■	■
<b>Staples, Kelly</b> Senior Planner / GIS Specialist	13			■**
<b>TOTAL</b>	<b>6</b>	<b>5</b>	<b>4</b>	<b>5</b>

\*Mr. Niermann has a Masters in Urban and Regional Planning.

\*\* Ms. Staples has a Master of Science Degree in Natural Resources and Environmental Management.

# CONSTRUCTION MANAGEMENT AND PROGRAM MANAGEMENT

## Construction Management

Over the past ten years RMTC has completed an estimated 50 construction management projects with total construction costs of over \$900 million. Among the pioneering ventures attributed to the firm is the first private construction management practice serving government clients in Hawaii.

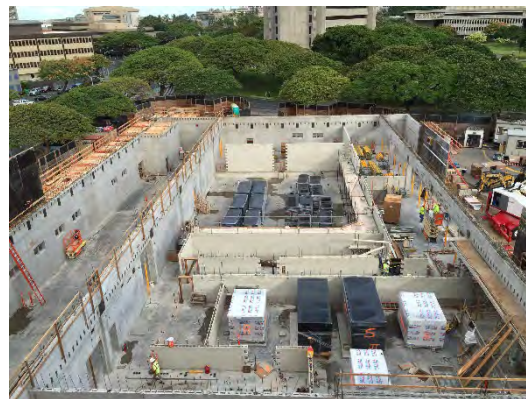
That proud tradition, started in 1974 with projects for the State of Hawaii, Department of Transportation (HDOT) and other agencies, continues without interruption. Through this and other wide-ranging experience, our construction inspectors have gained both technical and practical knowledge of various types of infrastructure projects and developed strong working relationships with owners and project managers.

RMTC construction managers have overseen the development of numerous projects including site work, subdivision, roadways, airport and harbor facilities, wastewater treatment facilities, utility improvements, new building construction, building renovation work, electrical, telephone and communication improvements, and air conditioning improvements.

### Projects / CM for Building Sitework and Housing Developments

- PASHA Maintenance, Marine Operations, Administration, and Guard House Buildings, Honolulu Harbor, Oahu (2024)
- Joint Traffic Management Center, Oahu (2021) *(right top)*
- Waikiki Improvements, Kalakaua Avenue Sidewalk, Phase 2, Oahu (2020)
- Laiopua Village 4 Subdivision, Phase 1 – Akau, Hawaii Island (2015)
- Ala Moana Boulevard / Auahi Street Sewer Rehabilitation, Ph. 1 and 2, Oahu (2015)
- Kunia De Monte Village Fire Protection Line, Oahu (2012)
- City BWS Public Services Building A/C System Improvements, Oahu (2012)

- Sunset Beach Recreation Center, Oahu (2009) *(bottom)*
- Ronald McDonald House at Judd Hillside, Oahu (2006)
- Villages of Kapolei 7 and 8, Maluohai, Oahu (2006)
- Kahe Power Plant Fuel Oil Tank Fire Loop and Fire Pump House, Oahu (2004)
- Installation of Field Turf at Aloha Stadium, Oahu (2003)
- Water System Improvements, Phase 2, University of Hawaii at Manoa, Oahu (1999)
- HOSHA Improvements, University of Hawaii at Manoa, Oahu (1999)
- School of Architecture, University of Hawaii at Manoa, Oahu (1999)
- Parking Structure Phase II, University of Hawaii at Manoa, Oahu (1999)
- Makai Campus Improvements, University of Hawaii at Manoa, Oahu (1999)
- West Loch Elderly Housing, Oahu (1997)
- Pacific Ocean Science and Technology Center, University of Hawaii at Manoa, Oahu (1997)



*Joint Traffic Management Center, Oahu (2021)*  
Construction Cost: \$54M



*Sunset Beach Recreation Center, Oahu (2009)*  
Construction Cost: \$2.5M

## Projects / CM for Wastewater Facilities

- Kalaeloa Business Park Wastewater Pump Station, Oahu (2018)
- Ala Moana Boulevard / Auahi Street Sewer Rehabilitation, Phase 2, Oahu (2017)
- Ala Moana 69-inch Sewer Rehabilitation, Oahu (2017)
- Sand Island Wastewater Treatment Plant Ultraviolet Disinfection Facility and Effluent Pump Station, Oahu (2006) (*below*)
- Hart Street Wastewater Pump Station Force Main Replacement (Through Honolulu Harbor), Oahu (2002)
- Kona International Airport, Wastewater Treatment Plant, Hawaii Island (2001)
- West Loch Estates and Fairways Wastewater Pump Station, Oahu (1997)
- Papaikoa Wastewater Treatment Plant, Hawaii Island (1990s)
- Wailua Wastewater Treatment Plant, Kauai (1990s)



*Sand Island Wastewater Treatment Plant Ultraviolet Disinfection Facility and Pump Station, Oahu (2006)*  
Construction Cost: \$81M

## Projects / CM for Highways, Roadways, and Bridges

- As-needed CM Services Contract for Kauai Department of Water: Kaumualii Highway 16-inch Main and Emergency Pump Connection and Hanapepe Road 6-inch Main Replacement, Kauai (2022)
- Queen Kaahumanu Highway, Phase II, Hawaii (2019)
- Kalaeloa Boulevard Improvements, Oahu (2018)

- City and County of Honolulu, Reconstruction of Concrete Sidewalks IDIQ, Oahu (2018)
- Kealakaha Stream Bridge Replacement, Hawaii Island (2010) (*below*)
- Curb Ramps at Various Locations, Oahu (2006)
- Pedestrian Facilities and ADA Compliance, Statewide (2006)
- Farrington Highway Widening, Oahu (1998)
- Ewa Villages Pavement Replacement Work for Renton Road and Various Roads, Oahu (1996)
- Villages of Kapolei Backbone Roadway Network, Oahu (1994)
- Kakaako Improvement Districts 1, 2 and 3, Oahu (1988-1993)



*Kealakaha Stream Bridge Replacement, Hawaii (2010)*  
Construction Cost: \$36M

## Projects / CM for Airports and Harbors

- NDWP Roadway/Terminal Signage Improvements, Daniel K. Inouye International Airport (HNL), Oahu (ongoing)
- CM Services for Miscellaneous Terminal Repairs/Upgrades Lihue Airport: Terminal Siding Repairs, Kauai (2021)
- Hangar 110 Improvements, Phase IV, Kalaeloa Airport, Oahu (2018)
- Elliott Street New Employee Parking Lot, HNL, Oahu (2017)
- Hangar 110 Improvements, Phase II, Kalaeloa Airport, Oahu (2015)
- Runway 26L Pavement Improvements, HNL, Oahu (2014)
- Overseas Terminal Chiller Plant Replacement, HNL, Oahu (2013)

- Airfield Striping and Miscellaneous Improvements, KOA, Hawaii Island (2013)
- Central Concourse Reroofing and Spall Repair, HNL, Oahu (2012)
- Aircraft Rescue and Fire Fighting Station Improvements, Molokai (2011)
- HNL, Air Conditioning Modifications, Phase II, Diamond Head Chiller Plant and Common Chilled Water Loop, Oahu (2009) *(below)*



*Air Conditioning Modifications, Phase II, Diamond Head Chiller Plant and Common Chilled Water Loop, HNL, Oahu (2009)*

Construction Cost:

- Diamond Head Chiller Plant - \$13.7M
- Common Chilled Water Loop - \$11.7M

- Environmental Compliance Measures, HNL, Oahu (2008)
- Washwater Containment, HNL, Oahu (2008)
- Wiki Wiki Roadway Modifications, HNL, Oahu (2008)
- Roof Rehabilitation for Building 349, HNL, Oahu (2008)
- Kona International Airport, Parking Lot Expansion, Phases I and II, Hawaii Island (2008) *(right top)*
- Molokai Airport, Runway 5-23 Pavement Repairs, Molokai (2008)
- Kalaeloa Airport, Runway and Taxiway Improvements, Oahu (2007)
- Lanai Airport, Replace Terminal Air Conditioning Units and Runway Monitoring System, Oahu (2007)
- Kahului Airport, Runway 5-23 and Taxiways Pavement Repairs, Maui (2007)
- Kapalua Airport, Overlay Runway, Maui (2006)
- Honolulu Harbor, Pier 2 Cruise Terminal, Oahu (2006) *(right middle)*
- Honolulu Harbor, Pier 19 Ferry Terminal, Oahu (2003) *(right bottom)*



*Various Construction Projects, Kona International Airport (1998-2009)*

Construction Cost: \$10.5M+

Additional projects not listed above under "Projects – CM for Airports" include:

- Terminal Improvements Phases I, II, III
- Wastewater Treatment Plant
- Signage and Graphics Improvements
- Postal Site Preparation
- Peripheral Road and Parking
- Aircraft Rescue/Fire Fighting Training Facility
- Runway/Taxiway Extension and Overlay



*Pier 2 Cruise Terminal, Honolulu Harbor, Oahu (2006)*

Construction Cost: \$24.5M



*Ferry Terminal at Pier 19, Honolulu Harbor, Oahu (2003)*

Construction Cost: \$4.3M

## Program Management

Program management involves the coordination of simultaneously occurring, interrelated projects. As program manager, RTMC has been engaged to navigate nearly one-half billion dollars worth of capital improvement projects, involving planning, design, and construction phases.

### Projects / Program Management

#### **Hoopili Development, Oahu (Ongoing)** (*top right*)

Ho'opili is a 1,515-acre master planned development proposed in Ewa, Oahu. The development plans to incorporate single and multi-family residential, commercial, schools, parks, and open space land uses.

RTMC has been commissioned by developer DR Horton to provide project management and professional engineering services to assist in developing infrastructure and mass grading plans to satisfy anticipated conditions of the rezoning from agricultural to residential designation.

Specific details of RTMC's scope of work include:

- Review of the current development goals, future programs and anticipates changes, and present permit condition and requirements.
- Assess the existing infrastructure and site conditions.
- Assess engineering requirements related to backbone infrastructure development.
- Assess the mass grading requirements of the site.
- Assess plan implementation and phasing strategies.
- Develop order-of-magnitude infrastructure cost estimates for various infrastructure systems.
- Coordinate with various approving agencies to develop understandings relating to project permitting and implementation requirements.



*Hoopili Development will include 1,515 acres of single and multi-family residential, commercial, school, parks, and open space.*

#### **Sand Island Basin Program Management, Oahu (2001-2006)** (*below*)

RTMC was program manager for the City and County of Honolulu's \$350-million-dollar upgrade of the Sand Island WWTP and related facilities within the Sand Island Basin. The program management portion included managing the schedule for 11 individual wastewater projects. Status reports to the U.S. Environmental Protection Agency were based on the updated schedule prepared by RTMC, with inputs from the City and contractors.



*RTMC was program manager for the City and County of Honolulu's \$350-million-dollar upgrade of the Sand Island WWTP and related facilities within the Sand Island Basin.*

**Manele Bay and Lodge at Koele Resorts, Lanai (2005-2008)**

Castle and Cooke Resorts, LLC is the principal landowner on Lanai and developer of the two resorts. The construction cost of projects under this multi-faceted contract totaled more than \$118 million. For seven years, RMTC assisted in resolving longstanding infrastructure issues on behalf of the client. These included regional drainage, infra-structure inadequacy, land use entitlements, site planning, and government and community relations.

**Master A-E, Pedestrian Facilities and Americans with Disabilities Act (ADA) Compliance, Statewide (2004-2005) (below)**

The State of Hawaii, Department of Transportation (HDOT), had to meet terms of a federal consent decree deadline of July 2005 to complete ADA improvements at roadway intersections statewide. HDOT called upon RMTC as Master A-E Program Manager. In this role, RMTC engineers managed multiple concurrent projects statewide being completed by six individual civil engineering firms. The work program included design and construction of approximately 1,600 curb ramps on five islands as well as emergency call boxes in remote locations. This highly-accelerated project required both design and construction to be completed within approximately 15 months. Construction cost totaled over \$22.1 million.



*RMTC assisted the State Department of Transportation, Highways Division, with management of the highly-expedited design and construction of over 1,600 curb ramps statewide. Total cost of the project exceeded \$22.1 million.*

**Villages of Kapolei and Related Projects, Oahu (1990-1994) (below)**

In addition to the firm’s work on design and surveying, RMTC program managers oversaw multiple projects for the State of Hawaii’s extensive Villages of Kapolei development. Projects under the program management umbrella included: Villages of Kapolei Backbone Infrastructure, Phase 1 and Phase 2; Village 6, Maluohai Subdivision; Kapolei Parkway Bridge and 18" Relief Sewer-Kamaaha Avenue; and Makai Villages 7 and 8, Road A.



*RMTC program managers supervised a wide range of construction projects at the Villages of Kapolei.*



**Ewa Villages Revitalization, Oahu (1996-2000)**  
(top right)

The City of Honolulu acquired the Ewa Villages after the closure of Ewa Sugar Plantation. RMTC was commissioned as program manager to satisfy the City’s objectives of providing housing opportunities for the plantation tenants, preserving the historic plantation villages, and satisfying the affordable housing demand on Oahu.

RMTC developed a comprehensive Master Plan that retained existing architectural elements and provided for the rehabilitation of existing buildings and the development of 950 new residential units.

RMTC was responsible for the following deliverables:

- Comprehensive Master Plan
- Environmental Impact Statement
- Topographic survey
- Hazardous waste investigation
- Construction documents for the infrastructure, golf course, and rehabilitation of existing and new homes

**West Loch Master Planned Community, Oahu (1990-1994)** (bottom right)

As Program/Project Manager of this award-winning project of the City and County of Honolulu, RMTC was responsible for the following contract deliverables:

- Comprehensive community master plan including single- and multi-family homes (West Loch Fairways and West Loch Estates), elderly housing, commercial, golf course and shoreline park
- Environmental impact statement
- Topographic survey
- Archaeological survey
- Construction documents for the infrastructure; golf course, clubhouse and maintenance facility; and shoreline park.
- Construction management and inspections of the project
- Coordinating lot turnover with the homebuilders (developers)



Ewa Villages Revitalization project, Oahu



West Loch master planned community, Oahu



For the Ewa Villages Revitalization project and West Loch master planned community, RMTC’s comprehensive services included preparing the master plan and civil design, then conducting program management at subsequent phases of development.

Technical Personnel: Construction Management Department

Name Title	Years of Professional Experience	Professional Engineer License, (PE) Hawaii	Civil Engineering Degree(s) or Similar	Certifications			
				Constr. Qual. Mgmt. (USACE)	Field Sampling & Testing (HDOT)	Storm Water BMP (C&C)	Other
<b>Inouye, Michael</b> Construction Management Department Manager	39		B.S.	■		■	<ul style="list-style-type: none"> <li>- City NPDES MS4 Annual</li> <li>- OSHA Safety and Health</li> <li>- ATSSA Traffic Control Tech</li> <li>- Pervious Concrete Tech</li> <li>- Master Certificate – Concrete Construction Management</li> <li>- Fall Protection</li> <li>- ACI Adhesive Anchor Installation Inspector</li> <li>- Pipeline Assessment and Certification Program (PACP)</li> <li>- Manhole Assessment and Certification Program (MACP)</li> <li>- Lateral Assessment and Certification Program (LACP)</li> <li>- CPR/First Aid/AED</li> </ul>
<b>Yee, Lydia</b> Construction Manager	35	■	B.S.	■		■	<ul style="list-style-type: none"> <li>- City NPDES MS4 Annual</li> <li>- Certified Construction Manager</li> <li>- OSHA Safety and Health</li> <li>- Cured-in-Place Pipe Installation, Inspection</li> <li>- ATSSA Traffic Control Tech</li> <li>- Pervious Concrete Tech</li> <li>- Confined Space Trained</li> <li>- Erosion and Sediment Control Plan Coordinator</li> <li>- Certified Inspector of Sediment &amp; Erosion Control</li> <li>- Fall Protection</li> <li>- ACI Adhesive Anchor Installation Inspector</li> <li>- ACI Concrete Anchor Installation Inspector</li> <li>- DOT BMP Training</li> <li>- ASBI Grouting Training</li> <li>- NASSCO PACP/MACP/LACP</li> <li>- CPR/First Aid/AED</li> </ul>
<b>Hee, Gregory</b> Construction Manager	48	R.A.	M.A. Architecture				
<b>Takahashi, Gary</b> Construction Manager	35	■	B.S.	■		■	<ul style="list-style-type: none"> <li>- City NPDES MS4 Annual</li> <li>- OSHA Safety and Health</li> <li>- Pervious Concrete Tech</li> <li>- ACI Adhesive Anchor Installation Inspector</li> <li>- Master Certificate – Concrete Repair</li> <li>- Fall Protection</li> <li>- ACE Safety Mgmt Systems</li> <li>- CPR/First Aid/AED</li> </ul>
<b>Yamashita, Lambert</b> Construction Manager	42	■ *	B.S.				<ul style="list-style-type: none"> <li>- City NPDES MS4 Annual</li> <li>- Certified Erosion and Sediment Control Plan Preparer</li> <li>- Certified Water Pollution Plan Preparer</li> </ul>
<b>Carpenter, Darren</b> Construction Manager	38	■	B.S.				<ul style="list-style-type: none"> <li>- City NPDES MS4 Annual</li> <li>- Supervisory Development Training</li> <li>- Formal Source Selection</li> <li>- Construction Contract Administration</li> <li>- Design-Build Construction</li> </ul>

Name Title	Years of Professional Experience	Professional Engineer License, (PE) Hawaii	Civil Engineering Degree(s) or Similar	Certifications			
				Constr. Qual. Mgmt. (USACE)	Field Sampling & Testing (HDOT)	Storm Water BMP (C&C)	Other
							<ul style="list-style-type: none"> <li>- Various DAWIA Trainings</li> <li>- Confined Space</li> <li>- Excavation &amp; Trenching Safety</li> </ul>
<b>Reyes, Jan</b> Construction Manager	22		B.S. – Biosystems Engineering				<ul style="list-style-type: none"> <li>- City NPDES MS4 Annual</li> <li>- NASSCO PACP/MACP/LACP</li> <li>- Confined Space Competent Person for Construction, General Industry, and Shipyards</li> </ul>
<b>Hong, Michael</b> Construction Engineer	19	■	B.S.		■	■	<ul style="list-style-type: none"> <li>- Certified Construction Manager</li> <li>- City NPDES MS4 Annual</li> <li>- OSHA Safety and Health</li> <li>- Cured-in-Place Pipe Installation, Inspection</li> <li>- ACI Concrete Testing Tech, Grade 1</li> <li>- ACI Adhesive Anchor Installation Inspector</li> <li>- ACI Concrete Construction Inspector</li> <li>- Master Certificate – Concrete Repair</li> <li>- NASSCO PACP/MACP/LACP</li> <li>- Fall Protection</li> <li>- Best Practices Asphalt Pvmnt</li> <li>- CPR/First Aid/AED</li> </ul>
<b>Yamashita, Diana</b> Construction Engineer	14	■	B.S.			■	<ul style="list-style-type: none"> <li>- City NPDES MS4 Annual</li> <li>- Certified Water Pollution Plan Preparer</li> <li>- Certified Professional in Erosion Sediment Control</li> <li>- ACI Adhesive Anchor Installation Inspector</li> <li>- Fall Protection</li> <li>- DOT BMP Training</li> <li>- Excavation &amp; Trenching Safety</li> <li>- CPR/First Aid/AED</li> </ul>
<b>Karlson, Michael</b> Construction Engineer	14	EIT	B.S.		■		<ul style="list-style-type: none"> <li>- City NPDES MS4 Annual</li> <li>- ATSSA Traffic Control Tech</li> <li>- Confined Space Trained</li> <li>- Cured-in-Place Pipe Installation, Inspection</li> <li>- ACE Safety Mgmt Systems</li> <li>- ACI Concrete Testing</li> <li>- CPM Scheduling</li> <li>- Best Practices Asphalt Pvmnt</li> <li>- Master Certificate – Concrete Construction Management</li> <li>- DOT BMP Training</li> <li>- CPR/First Aid/AED</li> </ul>
<b>Kaichi, Evan</b> Construction Engineer	8	■	B.S.		■		<ul style="list-style-type: none"> <li>- City NPDES MS4 Annual</li> <li>- Master Certificate – Concrete Fundamentals</li> <li>- ACI Adhesive Anchor Installation Inspector</li> <li>- CPR/First Aid/AED</li> </ul>
<b>Haraguchi, Taryn</b> Construction Engineer	8	EIT	B.S.-Constr. Engineering Mgmt		■	■	<ul style="list-style-type: none"> <li>- City NPDES MS4 Annual</li> <li>- OSHA Safety and Health</li> <li>- ACI Concrete Testing</li> <li>- DOT BMP Training</li> <li>- NASSCO PACP/MACP/LACP</li> </ul>

Name Title	Years of Professional Experience	Professional Engineer License, (PE) Hawaii	Civil Engineering Degree(s) or Similar	Certifications			
				Constr. Qual. Mgmt. (USACE)	Field Sampling & Testing (HDOT)	Storm Water BMP (C&C)	Other
							<ul style="list-style-type: none"> <li>- Fall Protection</li> <li>- CPR/First Aid/AED</li> </ul>
<b>Estabillo, Bryce</b> Construction Engineer	8		B.S.		■	■	<ul style="list-style-type: none"> <li>- City NPDES MS4 Annual</li> <li>- OSHA Safety and Health</li> <li>- Certified Inspector of Sediment &amp; Erosion Control</li> <li>- Master Certificate – Concrete Fundamentals</li> <li>- ACI Concrete Testing Tech, Grade I</li> <li>- ACI Adhesive Anchor Installation Inspector</li> <li>- CPR/First Aid/AED</li> </ul>
<b>Sako, Ryne</b> Construction Engineer	4	EIT	B.S.				<ul style="list-style-type: none"> <li>- City NPDES MS4 Annual</li> <li>- Confined Space</li> <li>- NASSCO PACP/LACP/MACP</li> <li>- Excavation &amp; Trenching Safety</li> <li>- ACI Concrete Anchor Installation Inspector</li> </ul>
<b>Estabillo, Kerri</b> Construction Engineer	4	EIT	B.S.				<ul style="list-style-type: none"> <li>- City NPDES MS4 Annual</li> <li>- NASSCO PACP</li> <li>- Excavation &amp; Trenching Safety</li> </ul>
<b>Ho, Reginald</b> Construction Inspector	52						<ul style="list-style-type: none"> <li>- Operating Engineers Apprenticeship</li> <li>- NASSCO PACP/MACP/LACP</li> </ul>
<b>Curnan, Daniel</b> Construction Inspector	48				■		<ul style="list-style-type: none"> <li>- OSHA Health and Safety</li> <li>- ECCATS Environmental</li> <li>- NASSCO PACP/MACP/LACP</li> </ul>
<b>O'Hara, Norman</b> Construction Inspector	37						<ul style="list-style-type: none"> <li>- City NPDES MS4 Annual</li> <li>- OSHA Health and Safety</li> <li>- Superintendent Training</li> <li>- DOT BMPs</li> </ul>
<b>Noland Ikeda</b>	34						<ul style="list-style-type: none"> <li>- Journey Worker Electrician</li> <li>- Honolulu Community College Electrical Installation/Maintenance</li> </ul>
<b>Ho, Phillip</b> Construction Inspector	31				■	■	<ul style="list-style-type: none"> <li>- City NPDES MS4 Annual</li> <li>- Certified Inspector of Sediment &amp; Erosion Control</li> <li>- ACI Shotcrete Inspector</li> <li>- ACI Adhesive Anchor Installation Inspector</li> <li>- CDL Class A</li> <li>- OSHA Safety and Health</li> <li>- ACI Concrete Testing Tech, Grade 1</li> <li>- Fall Protection</li> <li>- Confined Space</li> <li>- Best Practices Asphalt Pvmnt</li> <li>- CPR/First Aid/AED</li> <li>- DOT BMP Training</li> </ul>
<b>McAdam, Scott</b> Construction Inspector	30						<ul style="list-style-type: none"> <li>- City NPDES MS4 Annual</li> <li>- Grade 4 Collection System Operator</li> <li>- NASSCO PACP/LACP/MACP</li> <li>- OSHA – Trenching and Shoring</li> <li>- ATSSA Certified Flagger</li> <li>- Confined Space</li> <li>- Excavation &amp; Trenching Safety</li> </ul>

Name Title	Years of Professional Experience	Professional Engineer License, (PE) Hawaii	Civil Engineering Degree(s) or Similar	Certifications			
				Constr. Qual. Mgmt. (USACE)	Field Sampling & Testing (HDOT)	Storm Water BMP (C&C)	Other
<b>Fitt, James</b> Construction Inspector	28						<ul style="list-style-type: none"> <li>- City NPDES MS4 Annual</li> <li>- NASSCO PACP/LACP/MACP</li> <li>- HDOT Medical Examiner's Certificate</li> </ul>
<b>Neighbarger, Neil</b> Construction Inspector	21						<ul style="list-style-type: none"> <li>- City NPDES MS4 Annual</li> <li>- NASSCO PACP/MACP/LACP</li> <li>- Excavation &amp; Trenching Safety</li> <li>- DPP Erosion and Sediment Control Plan Coordinator</li> </ul>
<b>DeMello, Wilfred</b> Construction Inspector	12						<ul style="list-style-type: none"> <li>- DSO I Certified</li> </ul>
<b>Palombo, Sean</b> Construction Inspector	9						<ul style="list-style-type: none"> <li>- Honolulu Community College Construction Management</li> <li>- ERGO Robotics GL 1200 Operator</li> <li>- ACI Concrete Field Testing Technician - Grade I</li> </ul>
<b>TOTAL</b>	<b>5 people</b>	<b>7</b>	<b>18</b>	<b>5</b>	<b>7</b>	<b>6</b>	

\*Mr. Yamashita is also a licensed professional engineer in Hawaii and the Commonwealth of the Northern Mariana Islands.

Notes: EIT = Engineer-in-Training

RMTC's civil engineers are cross trained in CM and are available as needed.

# PLANNING

## Land Planning and Permitting

RMTC's planners offer a range of services to meet the needs of its clients from the preparation of master plans and environmental documents to the preparation of environmental and development permits.

## Master Plans

RMTC provides master planning services for private and public clients. Project sizes have ranged from small sites to regional areas encompassing thousands of acres. RMTC has effectively planned a variety of public and private projects including towns, roadways, private residential communities, military installations, airports, recreational parks, and others.

### Projects / Master Plans

- Nawiliwili to Ahukini Bike and Pedestrian Facility Master Plan, Kauai (ongoing) (*top right*)
- Honolulu Harbor Optimization Master Plan, Oahu (2024)
- Koolau Land Partners Sustainable Communities Plan Amendment, Oahu (2021)
- Puunene Master Plan Update, Maui (2020)
- Strategic Master Development Plan for East Kapolei Lands, Oahu (2019)
- Lanai Island Strategic Land Planning, Lanai (2017)
- Kahului Airport Master Plan Update, Maui (2016)
- Halawa-Luluku Interpretive Development Plan, Oahu (2013)
- Kokee and Waimea Canyon State Parks Master Plan, Kauai (2009)
- Statewide Stream Diversion Study, Statewide (2009)
- Waikoloa Highlands Master Plan, Hawaii Island (2007)
- Pali to Puamana Parkway (Realignment of Honoapiilani Highway) Master Plan, Maui (2005-2007) (*bottom right*)

- Kona International Airport Master Plan, Hawaii (2001)



RMTC planners are preparing a master plan for the Nawiliwili to Ahukini portion of this 16-mile Bike and Pedestrian Path on Kauai. In addition, RMTC planners are preparing an Environmental Assessment which complies with both NEPA and Chapter 343, HRS, as well as an SMA permit application, Conservation District Use Permit Application, and Shoreline Setback Variance application.



RMTC prepared a Master Plan which featured relocation of the Honoapiilani Highway for the purposes of creating an open space preserve along this coastal corridor on Maui. RMTC also prepared the Environmental Assessment and facilitated extensive community outreach.

## Environmental Documentation (EISs, EAs)

RMTC planners are highly experienced in preparing environmental documentation (Environmental Impact Statements and Environmental Assessments) in conformance with requirements of the National Environmental Policy Act (NEPA) and Hawaii Revised Statutes, Chapter 343.

### Projects / EIS

- Waipahu Sewer Force Main, Oahu (ongoing)

- Ala Wai Canal Dredging and Wall Repairs, EIS, Oahu (2020)
- Haleiwa Improvement District EIS and Improvement District Preliminary Report, Oahu (2020)
- Kokee State Park and Waimea Canyon State Park Master Plan, Kauai (2009)
- Waimanalo Gulch Sanitary Landfill Lateral Expansion, Oahu (2007)
- Waikoloa Highlands EIS, Hawaii (2007)
- Kaloi Gulch Drainageway Improvements, Oahu (2005)
- Hawaii Island Commercial Harbors 2020 Master Plan (Hilo and Kawaihae Harbors), Hawaii Island (2001)

### Projects / EA

- Nawiliwili to Ahukini Bike and Pedestrian Facility Master Plan, Kauai (ongoing)
- Statewide Airports EAs, Various Locations (2022)
- Ritz Carlton Condo Hotel Towers, Waikiki, Oahu (2020)
- Honolulu Marine Small Boat Shipyard at Keehi Lagoon, Oahu (ongoing) *(right)*
- Nuuanu Reservoir, Oahu (2014)
- Central Maui Regional Park, Oahu (2014)
- Makakilo Drive Extension, Oahu (2010)
- Kamehameha Highway, Replacement of Kaipapau Stream Bridge, Oahu (2008)
- Dillingham Ranch Subdivision, Oahu (2006)
- Kahe Power Plant Improvements, Oahu (2006)
- Fort Weaver Road Widening, Oahu (2004)
- New Kauai Judiciary Complex, Kauai (2002)
- Frear Hall Replacement, University of Hawaii at Manoa, Oahu (2001)

## Land Use Entitlements and Permitting

RMTC offers clients the full range of permitting expertise required for land use entitlement, development planning and construction.

RMTC planners provide assistance to clients with complete land use entitlement services on the state and county levels. Entitlement services include State Land Use District Boundary Amendments and various County community

plans, zoning approvals, and development approvals.

### State of Hawaii Permits

- Conservation District Use Permit Applications
- Stream Channel Alteration Permits (SCAP)
- 401 Water Quality Certification, Clean Water Act, DOH
- Noise Variances



*For the relocation of Honolulu Marine, LLC, small boat builders, from Kewalo Basin to Keehi Lagoon, RMTC planners prepared an EA and wide range of environmental permits including:*

- Special Management Area Permit*
- Shoreline Setback Variance*
- Conservation District Use Permit*
- NPDES NOI-B (Industrial Stormwater)*
- NPDES NOI-C (Construction Stormwater)*
- NPDES NOI-F (Hydrotesting)*
- NPDES NOI-G (Construction Dewatering)*
- Department of the Army Permit*
- Section 401 Water Quality Certification*
- CZM Federal Consistency Determination*
- Private Aids to Navigation Permit*

### State Land Use District Boundary Amendments

- Brigham Young University Hawaii Expansion, Oahu
- Waikoloa Highlands Boundary Amendment, Hawaii Island
- Waimanalo Gulch Sanitary Landfill State Land Use Distribution Boundary Amendment and Special Use Permit, Oahu
- Kona International Airport, Hawaii Island
- Laumaka Community Release Center, Oahu
- Villages of Kapolei, Oahu
- West Loch Estates and Fairways, Oahu
- Kukuiula Planned Community, Kauai

## NPDES Permits

- NOI Form C (construction storm water)
- NOI Form F (hydrotesting)
- NOI Form G (dewatering)
- NOI Form B (industrial stormwater)
- NOI Form K (small municipal separate storm sewer systems) (MS4s)
- NOI Form L (circulation water)

## County Permits

- Special Management Area Permits
- Shoreline Setback Variances
- Special District Permits
- Road and Water Variances

## Zoning Approvals

- AT&T Makaha Cable Station Zone Change, Oahu
- Meeting Facilities at Mokuleia Ranch, Oahu
- Laumaka Work Release Center Zone Change, Oahu
- Nanakuli Rezoning, Oahu
- Lokahi Center Zone Change, Oahu
- Operating Engineers Training Facility Special Permit, Oahu
- Waikoloa Rezoning, Hawaii Island

## Zoning Variances

- Ronald McDonald House at Judd Hillside, Oahu
- Dillingham Ranch, Oahu

## Conditional Use Permits (CUP)

- Ronald McDonald House at Judd Hillside CUP, Oahu
- Safeway Store at Kapahulu CUP and Joint Development Agreement, Oahu
- Church of Jesus Christ of Latter-Day Saints CUP, Oahu

## Plan Review Uses

- Frear Hall Replacement, University of Hawaii at Manoa, Oahu
- Oahu Community Correctional Center, Oahu

## Federal Permits

- Section 10 (RHA)
- Section 106 Consultation Historical Preservation
- Section 7 (ESA)
- Coastal Zone Management Federal Consistency Review

## Fiber Optic Cable Systems

RMTC planners have extensive prior work experience with project management and obtaining entitlements for the installation of submarine fiber optic cable systems in the State of Hawaii. This includes project scheduling, managing day to day activities of the project team, preparing environmental and land use entitlements, easements, and related responsibilities for numerous submarine cable systems on all Hawaiian Islands with the exception of Niihau.

### Projects / Fiber Optic Cable Systems

- Fiber Optic Cable Landing at Ford Island Permits, Oahu (AT&T, General Dynamics, Oceanic Cable) (CDUA)
- Hawaiian Island Fiber Network Cable System (HIFN) Statewide Submarine Fiber Optic Cable System, Statewide (GST Telecom Hawaii) (EA and CDUA for each of five sites)
- Fiber Optic Cable Landing at Ford Island Permits, Oahu (AT&T, General Dynamics, Oceanic Cable) (EA)
- Tycom (TGN) Hawaii Cable System, Oahu (TGN, Inc.) (EA)
- Fiber Optic Cable Landings, Oahu (360 Net, Inc.) (CDUA)
- Fiber Optic Cable Landings at Makaha, Oahu (AT&T, GTE and GST) (CDUA)
- Fiber Optic Cable Landings at Keawaula, Oahu (AT&T and GST) (EA; CDUA)
- Fiber Optic Cable Landings at Kahe Point, Oahu (AT&T, GTE and GST) (EA; CDUA)
- Fiber Optic Cable Landing at Wailea, Maui (GST and GTE) (EA; CDUA)
- Fiber Optic Cable Landing at Kawaihae, Hawaii Island (GST, GTE, and Southern Cross) (EA; CDUA)
- Fiber Optic Cable Landing at Kaunakakai, Molokai (GST) (CDUA)
- Fiber Optic Cable Landing at Lanai (GST) (EA; CDUA)

## Public Involvement Programs

The firm's philosophy on public involvement is to involve stakeholders *early* and *often* to ensure that stakeholders' issues and concerns are thoroughly addressed. RMTC planners provide clients with a

means of engaging the public and the community in meaningful dialogue at key points in the planning, design, and construction process. Approaches include facilitating public workshops, informational meetings, focus groups, stakeholder meetings and interactive planning and design working groups.

**Projects / Public Involvement Programs**

- Honolulu Harbor Master Plan, Oahu (ongoing)
- Nawiliwili to Ahukini Bike-Pedestrian Facility EA, Kauai (ongoing)
- Halawa-Luluku Interpretive Development, Oahu (2013) (right)
- Makakilo Drive Extension NEPA Environmental Assessment, Oahu (2010)
- Mayor’s Advisory Committee on Landfill Site Selection, Kauai (2009)
- Kapiolani Water and Sewer Improvements, Oahu (2006)
- Beachwalk Wastewater Pump Station, Oahu (2006)

- Waimanalo Gulch Sanitary Landfill Lateral Expansion, Oahu (2004)
- Interstate Route H-1 Waimalu Viaduct Widening, Westbound Direction, Kaonohi Street Overcrossing to Pearl City Off-Ramp, Oahu (2003)



*RMTC planners coordinate a planning charrette with members of the Native Hawaiian community for the Halawa-Luluku Interpretive Development Plan, a cultural preservation effort in Halawa Valley, Oahu.*

**Technical Personnel: Planning Department**

<b>Name Title</b>	<b>Years of Professional Experience</b>	<b>American Institute of Certified Planners</b>	<b>Masters In Urban and Regional Planning</b>	<b>LEED AP</b>
<b>Tanoue, David</b> Vice President / Manager, Surveying & Planning Departments	34		Juris Doctor*	
<b>Takeda, Brian</b> Planning Project Manager	38		■	
<b>Niermann, James</b> Planning Project Coordinator	28	■	■	■
<b>Staples, Kelly</b> Senior Planner	12		**	
<b>Lee, Roxanne</b> Planner	9	■	***	G.A.
<b>Sato, Isalah****</b> Assistant Planner II	8			
<b>Marchant, Michelle</b> Assistant Planner II	7			
<b>Harrison, Alec</b> Assistant Planner II	4		*****	
<b>Eaton, Alena</b> Assistant Planner I	3			
<b>TOTAL</b>	<b>9 people</b>	<b>2</b>	<b>2</b>	<b>2</b>

\* Mr. Tanoue is a licensed attorney (Hawaii State Bar Association).

\*\* Ms. Staples has a Master of Science Degree in Natural Resources and Environmental Management.

\*\*\*Ms. Lee Has a Master of Landscape Architecture Degree.

\*\*\*\* Mr. Sato is a Professional Civil Engineer licensed in Hawaii.

\*\*\*\*\*Mr. Harrison has a Master of Science Degree in Natural Resource Management.