



**PACIFIC ISLANDS**  
CLIMATE ADAPTATION SCIENCE CENTER

---

Supporting Sustainability and Climate Adaptation  
in Communities Across the Pacific Islands

# PICASC Mission

---

To deliver science to help fish, wildlife, water, land, and people adapt to a changing climate.

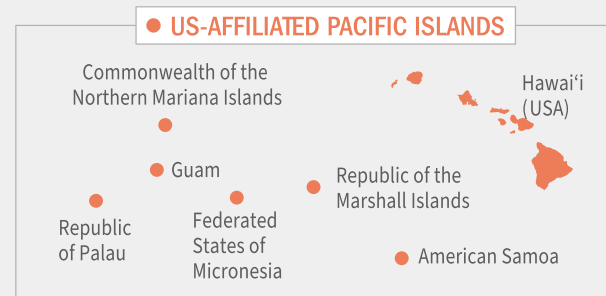
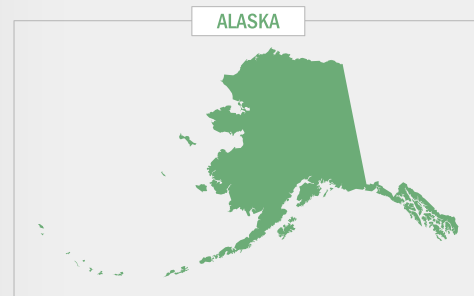
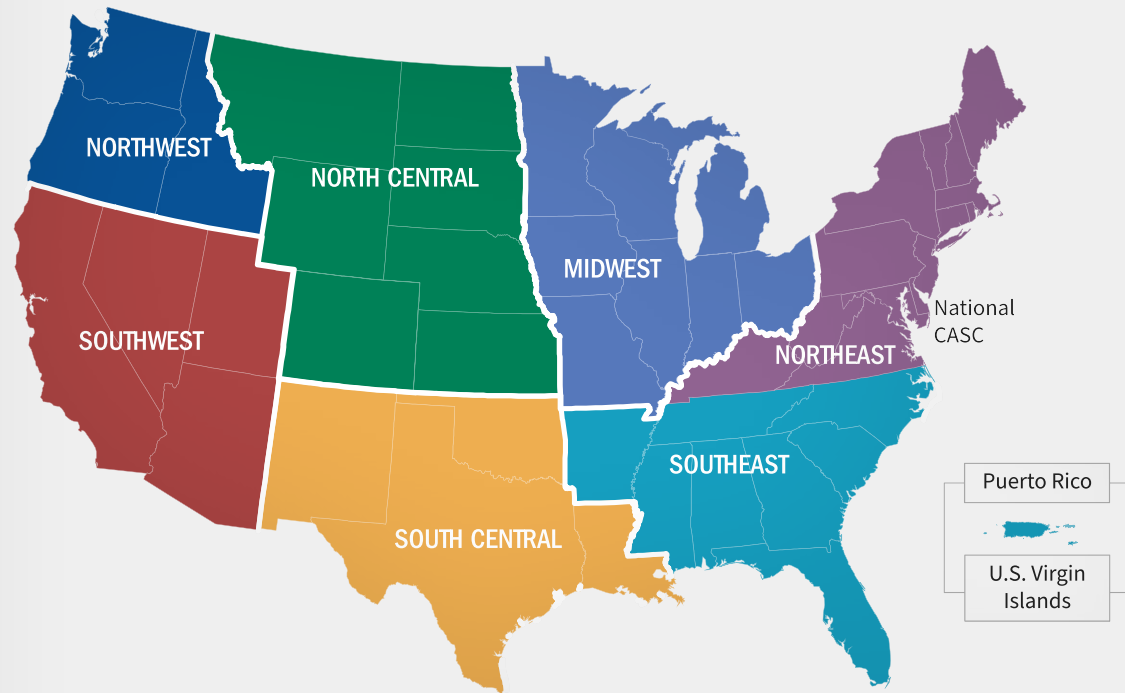


# Who We Are

PICASC is one of nine regional Climate Adaptation Science Centers (CASC) established in 2009 by the **Department of the Interior (DOI)**.

The CASCs are a **partnership** between the USGS and a university consortium led by:

- University of Hawai'i at Mānoa
- University of Hawai'i at Hilo
- University of Guam



# What We Do

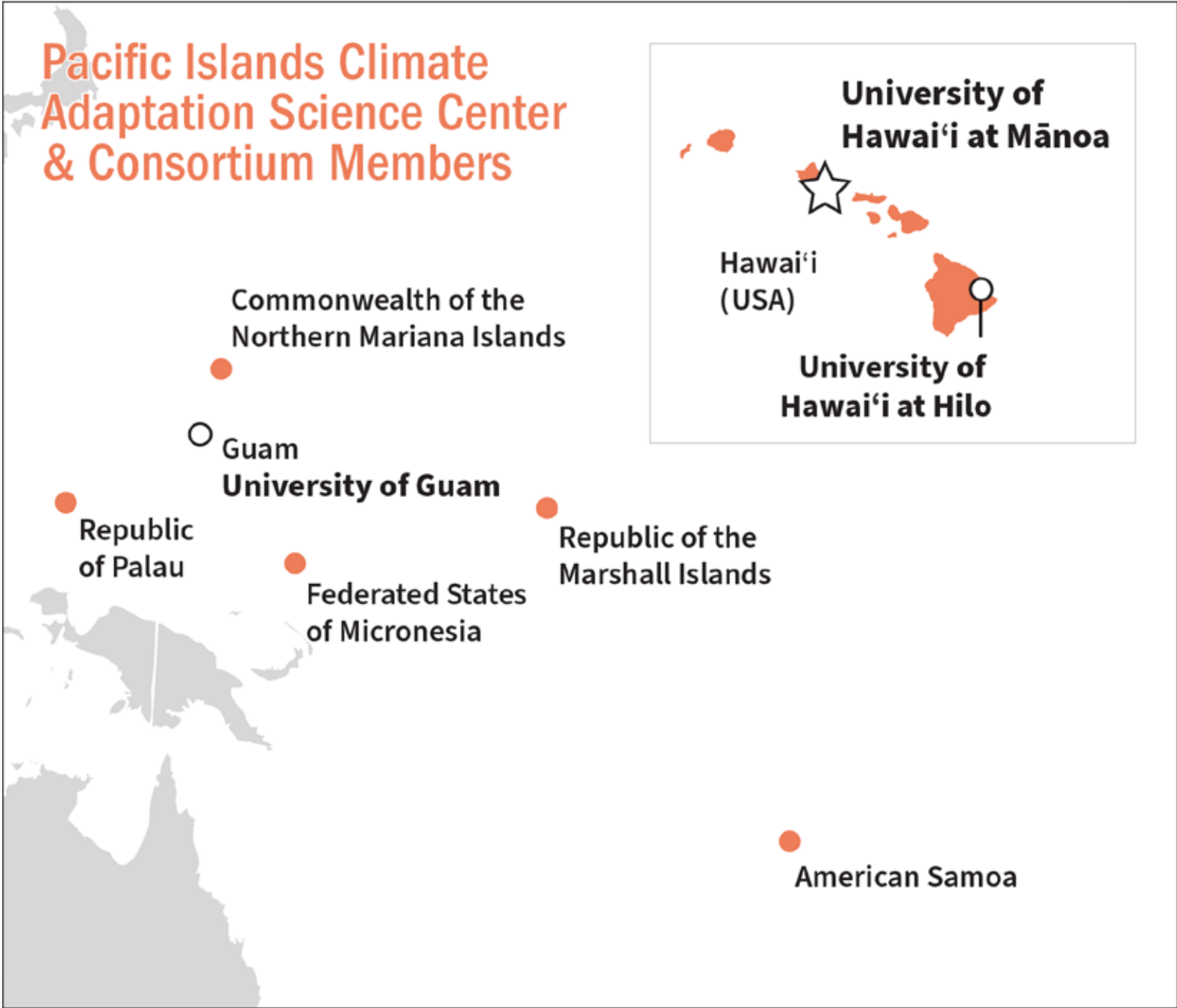
---

Our goal is to provide access to the best science available on climate impacts to the Pacific Islands' natural and cultural resources.



# Our Region

The PICASC region spans the **Pacific Basin** from the Hawaiian archipelago to the U.S.-Affiliated Pacific Islands (USAPI) of the South Pacific.

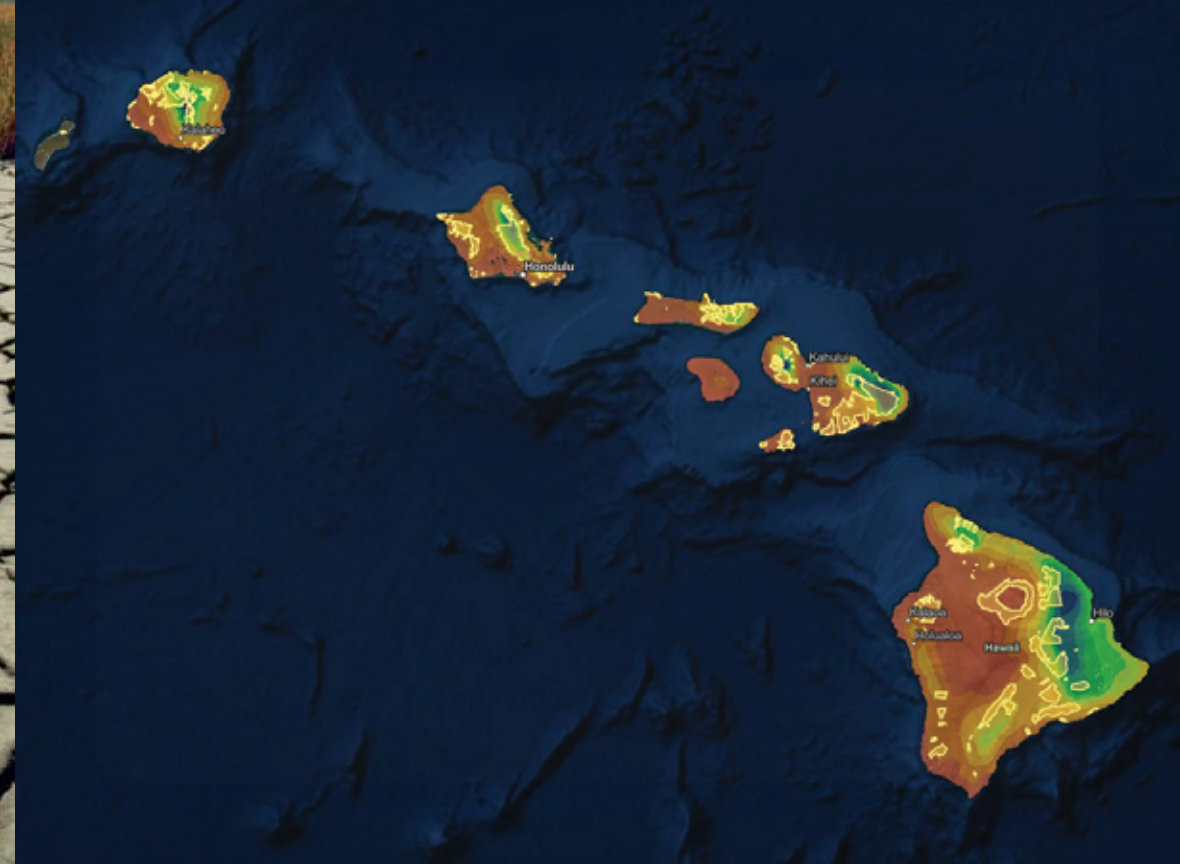


# Education Hub

---

Connecting K-12 Students  
with Place-Based Climate  
Science in the Pacific

- Drought
- Coral Reefs
- Sea-level Rise



# Hub Features

---



**Climate Topics**



**Lesson Plans**



**Resources**



**Blog**



**Stay connected and learn more!**

[picasc-education-usgs.hub.arcgis.com](https://picasc-education-usgs.hub.arcgis.com)





# Future Opportunities

---

## PICASC SURF Program

The Summer Undergraduate Research Fellowship (SURF) program provides undergraduate students the opportunity to gain valuable research experience in climate science.

Research project topics that PI-CASC has funded stretch from the mountains to the sea, from forests to fishponds, from rainfall to streamflow, and from shorelines to sea levels.

# Questions For Students

---

1. Where do you find climate science information?  
*(Websites, social media, classroom, podcasts, news, etc.?)*
2. What are you currently learning about climate change in the classroom?
3. What climate topics are you most interested in that affect Hawai'i and the USAPI region?



**PACIFIC ISLANDS**  
CLIMATE ADAPTATION SCIENCE CENTER

Mahalo

[PICASC.ORG](https://picasc.org)

*Sign up for our  
Pandanus Newsletter*

