

Mitchell D. Roth  
Mayor

Stephen M. Pause, P.E.  
Director

Deanna S. Sako  
Managing Director

Malia A. Kekai  
Deputy Director

**County of Hawaii'**  
**DEPARTMENT OF PUBLIC WORKS**  
Aupuni Center  
101 Pauahi Street, Suite 7 · Hilo, Hawai'i 96720-4224  
(808) 961-8321 · Fax (808) 961-8630  
public\_works@hawaiiicounty.gov

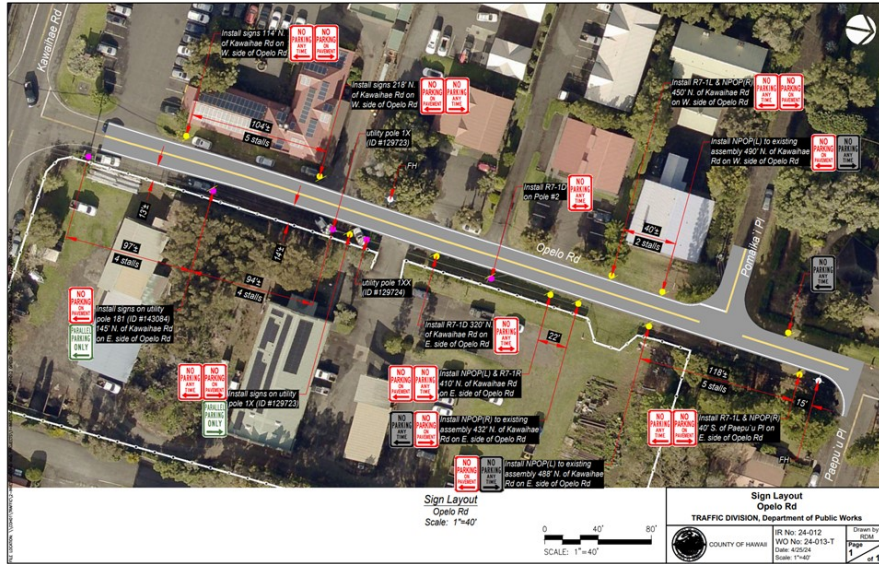
FOR IMMEDIATE RELEASE  
May 3, 2024

**Installation of Traffic Signs and Markings begins on May 13**

The Department of Public Works Traffic Division will be conducting roadwork on `Opelo Road, including the installation of new signs and markings. This work is scheduled to begin on May 13 and will take place between 8:00 am and 2:30 pm.

The initial installation will start on the mauka side of the road, across the street from `Opelo Plaza. During this time, please exercise caution when driving in the area and anticipate potential delays. See map below.

We appreciate your patience and cooperation as we work to improve traffic safety.



###

**MEDIA CONTACT:**  
Sherise Kana'e-Kāne  
Information & Educational Specialist II  
Department of Public Works Administration  
sherise.kanae-kane@hawaiiicounty.gov  
(808) 961-8499