

# MĀMALAHOA HIGHWAY RESURFACING

MĀMALAHOA HIGHWAY

KAMALANI ST TO KALAMAUKA RD

3 MILES

# SCOPE OF WORK

A.C. Pavement Resurfacing

Pavement Striping and Markings

Signing and Striping Improvements to Pedestrian Crossings

Adjusting Utility Frames and Covers

Widen paved shoulders, where it's possible

Adjusting Drainage Inlet Steel Frame and Grates

# TIMELINE

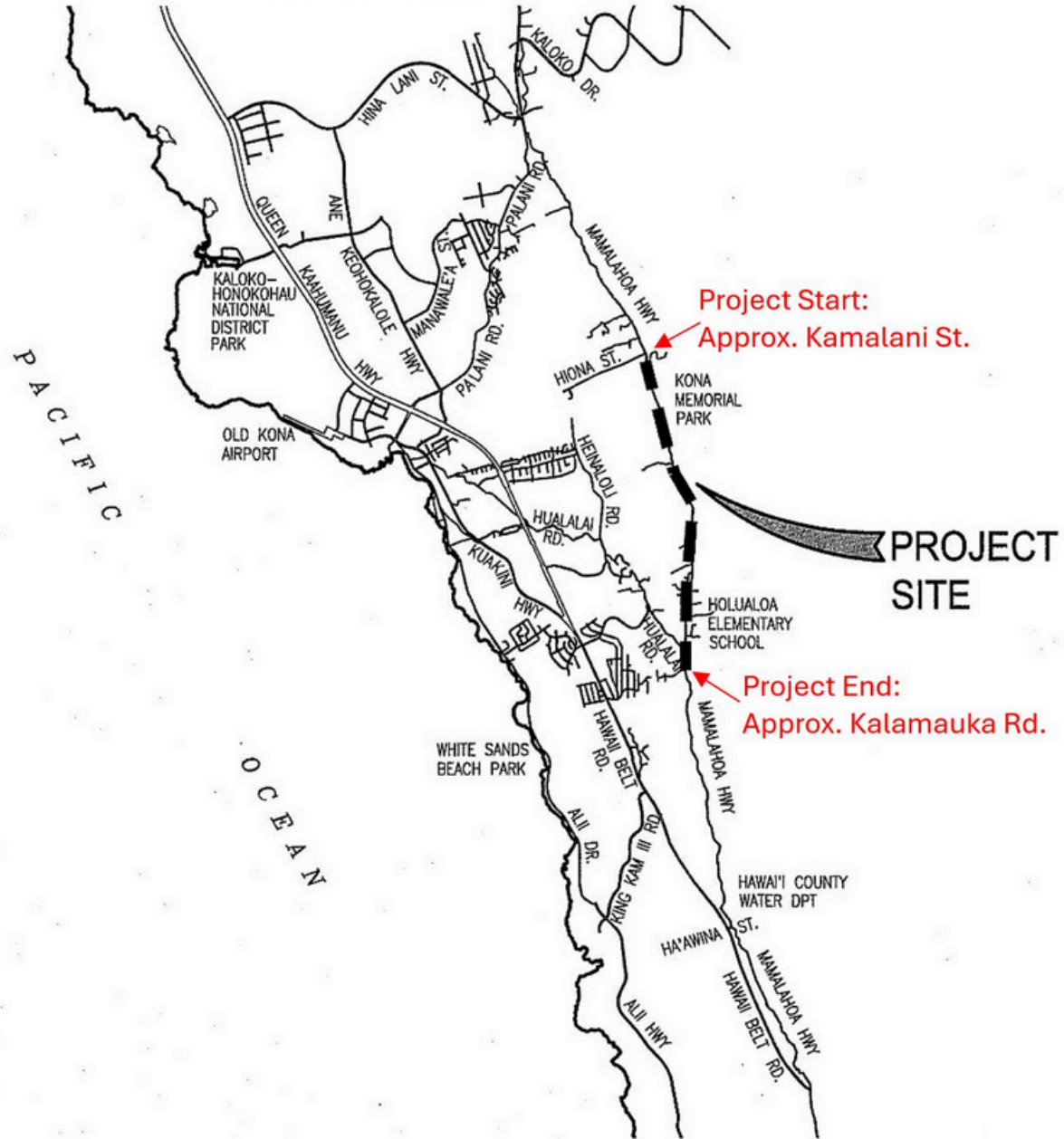
START WORK DATE:  
MAY 17, 2024

CONTRACT WORKING DAYS:  
240

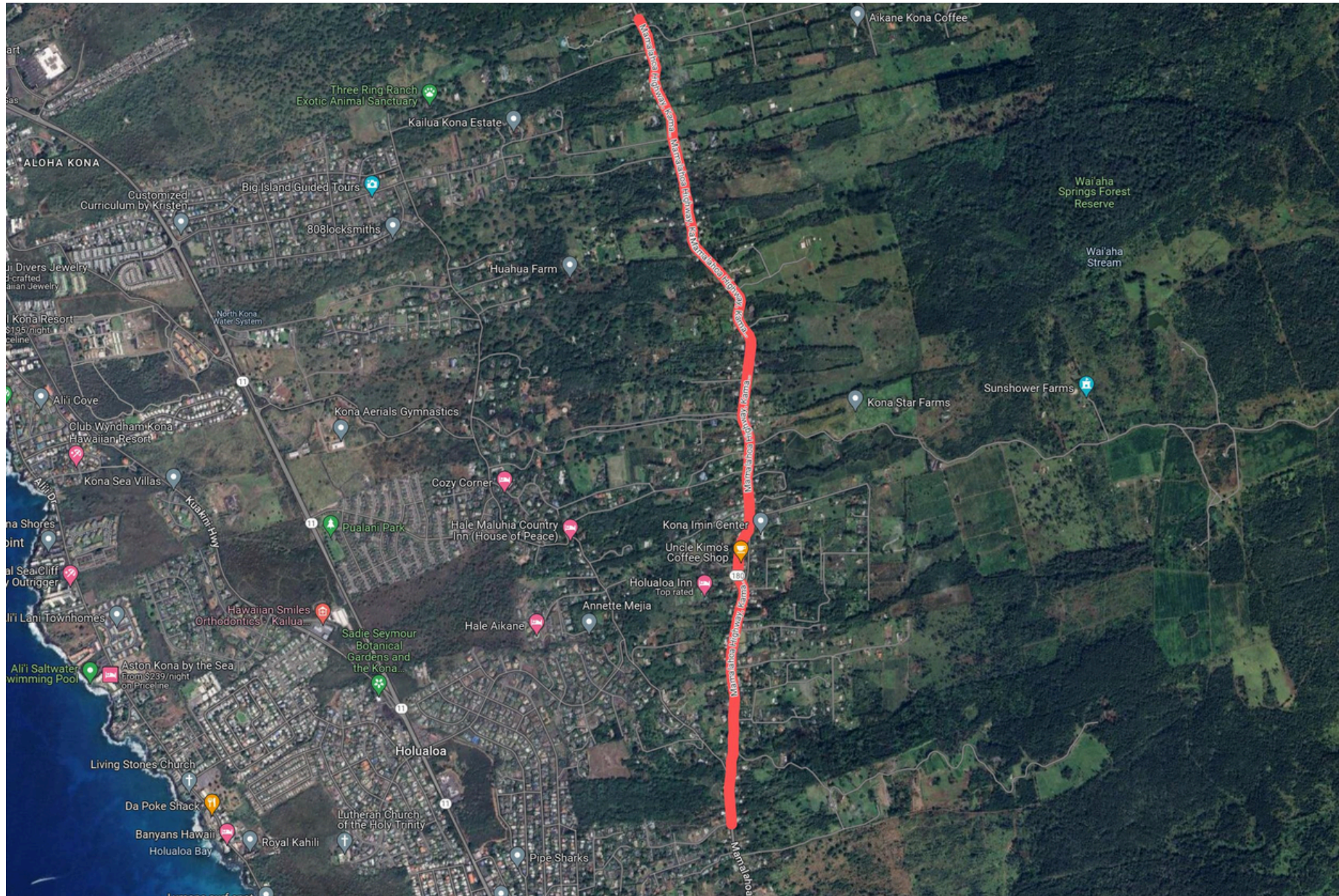
ANTICIPATED COMPLETION  
DATE:  
TENTATIVE - MAY 2025

# LOCATION PLAN

NOT TO SCALE



# Kamalani St to Kalamauka Rd



ows



Ma Hwy



75-5475 Mamalahoa  
Hwy, Holualoa, HI 96725-  
9625, United States

Kamalani St



MI TAQUERIA  
POTOSINA

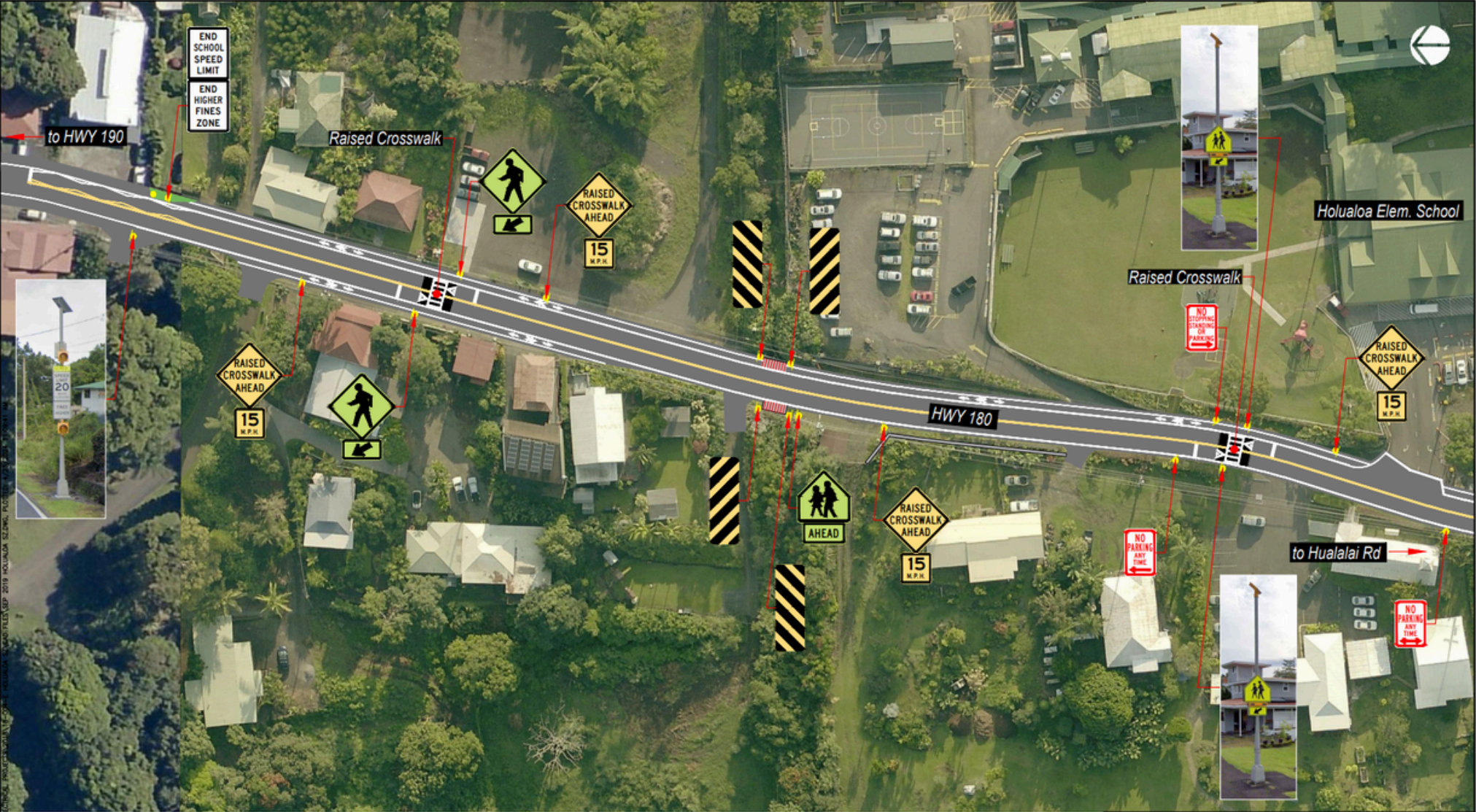
alani Dr

Mamalahoa Hwy

Kalamauka Rd



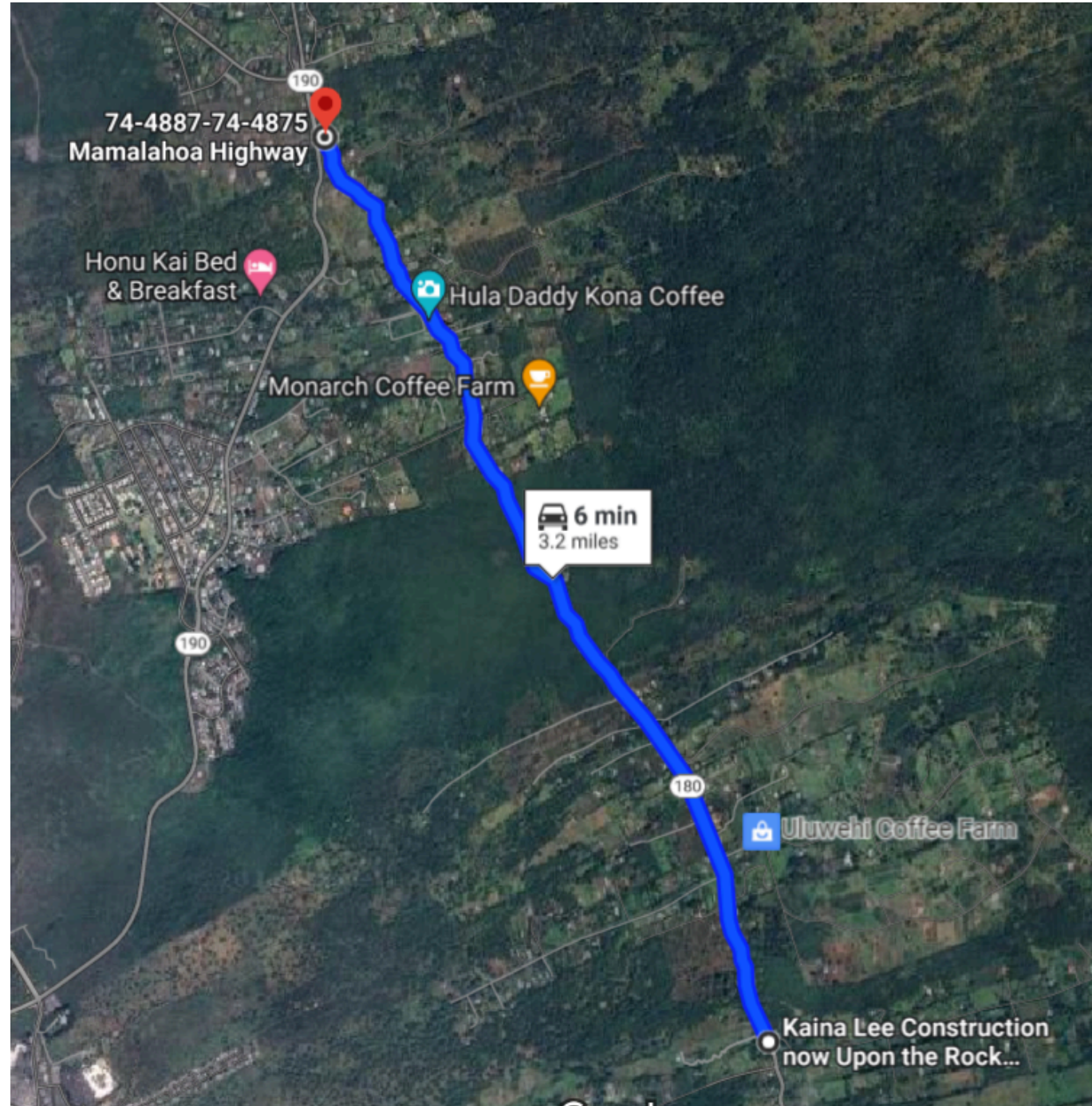
# HOLUALOA ELEMENTARY SCHOOL PLANS



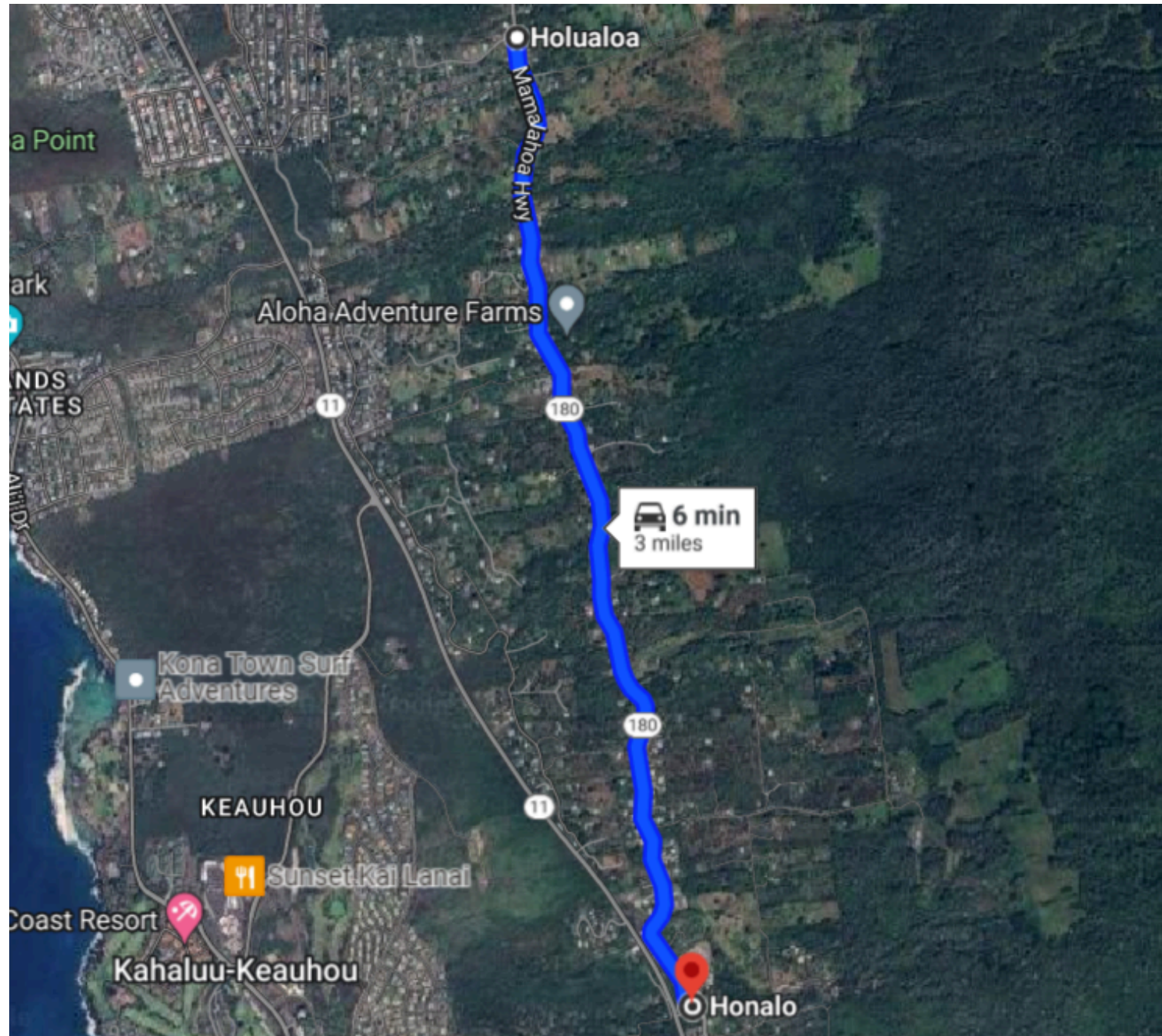
Site Layout  
Mamalahoa Hwy (HWY 180)

# TWO MORE PROJECTS PLANNED FOR MAMALAHOA HIGHWAY: (NEXT YEAR)

1. Mamalahoa  
Highway  
Resurfacing, Palani  
Road to Kamalani  
Street  
MP 9.1 to MP 5.9



## 2. Mamalahoa Highway Resurfacing, Kalamauka Road to Ha'awina Street MP 3.0 to MP 0.1





Any  
Questions  
???

**MEDIA CONTACT**

**Sherise Kana'e-Kāne**

**[sherise.kanae-kane@hawaiicounty.gov](mailto:sherise.kanae-kane@hawaiicounty.gov)**