



Rider Levett Bucknall

American Savings Bank Tower
1001 Bishop Street, Suite 2690
Honolulu, Hawaii 96813

T: +1 808 521 2641

TRANSMITTAL

To: Ms. Susan Kunz,
Administrator

Department: Housing and Community
Development
County of Hawaii
1990 Kinoole Street, Suite 102
Hilo, Hawaii 96720

From: Antonia Agbannawag

CC:

Subject: **FY2025 ANNUAL NOTICE OF PROFESSIONAL SERVICES FOR COUNTY OF HAWAII HOUSING & COMMUNITY DEVELOPMENT**

Date: 6/28/2024

Delivery Method: EMAIL
ohcdprofserv@hawaiicounty.gov

Phone: 808 521 2641

Job Reference:

TRANSMITTED FOR

- Your Signature
- Your Signature & Return
- Review & Comment
- Distribution to Parties
- Per Our Conversation
- Further Action
- Your Approval
- Per Your Request
- Your Use
- Other

COPIES	DATE	DESCRIPTION
(1)	6/28/2024	Rider Levett Bucknall (RLB) FY2025 Submission Packet for Annual Notice of Professional Services

Aloha,

Please see the enclosed submission packet document regarding the above Notice of Professional Services. Please contact me at 808 521 2641, should you have any questions or need any further information.

Mahalo,

Antonia Agbannawag
Associate
Rider Levett Bucknall Ltd

This transmittal message is privileged and confidential. The information contained herein is only for the use of the individual or entity named above. If the reader of this message is not the intended recipient, you are hereby notified that any dissemination, distribution or copying of this communication is strictly prohibited. If you have received this communication in error, please notify us by telephone, and return the original message to us at the above Hawaii address.



24-25 SUBMITTAL

COUNTY OF HAWAII

HOUSING & COMMUNITY DEVELOPMENT (HCD)

FY25 ANNUAL NOTICE OF PROFESSIONAL SERVICES

Construction Management/Inspector
General Engineering (Construction Inspector)*
General Engineering (Project Manager)*

CONTENTS

Letter of Interest	3
Statement of Qualifications	5
Firm Information	5
Experience & Qualifications	7
Personnel Qualifications	14
Performance - Past Projects	19
Client References	27
Work Approach & Capacity	28
Appendices	30
DPW 120	31
Professional License Documents	47

LETTER OF INTEREST

28 June 2024

Ms. Susan Kunz
Administrator
Housing and Community Development
County of Hawaii
1990 Kinoole Street, Suite 102
Hilo, Hawaii 96720
ohcdprofserv@hawaiicounty.gov

**RE: FY2025 ANNUAL NOTICE OF PROFESSIONAL SERVICES FOR COUNTY OF HAWAII
HOUSING & COMMUNITY DEVELOPMENT**

Dear Ms. Kunz:

Thank you for considering Rider Levett Bucknall (RLB) for the opportunity to submit our qualifications for the provision of Professional Services for Fiscal Year 2025. We are delighted to present our submittal for the following disciplines:

- **Construction Management/Inspector**
- **General Engineering (Construction Inspector)***
- **General Engineering (Project Manager)***

RLB has brought imagination to life through the planning, design, and construction phases of significant developments in Hawaii, collaborating with both municipal and federal agencies. Over the past decade, RLB has been a trusted advisor to numerous State of Hawaii Departments, Divisions, and Agencies, actively involved in statewide projects. Leveraging its diverse experience in Project Management, Cost Consultancy, and Advisory Services, RLB provides technical expertise and independent advice on feasibility, costs, and timelines to deliver quality projects that benefit Hawaii communities.

RLB possesses the construction expertise needed to ensure the successful execution of projects while maintaining the highest standards of quality, safety, and operational efficiency. Our value includes:

- **Optimizing Cost, Time, Quality, and Operations:** With more than 30 years of experience in Hawaii, RLB assists public agencies and private clients in planning and executing their repair, maintenance, and capital improvement programs, focusing on cost-effectiveness, minimizing downtime, maintaining high standards, and ensuring smooth operations throughout the project lifecycle. We provide accurate cost estimates, realistic schedules, and project prioritization based on operational and budgetary impact.
- **Repair and Maintenance Expertise:** RLB has a strong track record in managing diverse repair and maintenance projects across various industries, addressing infrastructure issues, overseeing facility upgrades, and supporting ongoing maintenance programs. Our experience in delivering substantial new construction projects showcases our team's diverse technical proficiency, essential for helping mitigate project risks and identify opportunities to meet agency goals effectively.

With more than 30 years of experience in Hawaii, RLB has unparalleled knowledge of the local construction industry, consistently delivering on-time and on-budget projects with unmatched service quality.

FY2025 ANNUAL NOTICE OF PROFESSIONAL SERVICES FOR COUNTY OF HAWAII – HOUSING & COMMUNITY DEVELOPMENT

VALUE DELIVERED:

- Independent Management & Unbiased Advice
- Multi-disciplinary Solutions
- Boots on the Ground Across (4) Hawaii Offices: Honolulu, Kihei, Waimea-Kamuela, Hilo
- Proprietary Cost Research

As established Construction professionals, it is our collective goal to create value and help bring the ambitious projects from idea to reality. Please feel free to contact me if you would like additional information or have any questions. I can be reached at our main office: +1 808 521 2641; cell phone: +1 808 391 4500; or through email: erin.kirihara@us.rlb.com.

Yours sincerely,



Erin Kirihara
Executive Vice President
Rider Levett Bucknall Ltd.

FIRM INFORMATION

RLB IN HAWAII

For announcements of future notices and solicitations, please see the following RLB personnel contact information for electronic distribution list:

- Erin Kirihara, Executive Vice President erin.kirihara@us.rlb.com
- Guia Lasquete, Principal guia.lasquete@us.rlb.com
- Antonia Agbannawag, Associate antonia.agbannawag@us.rlb.com

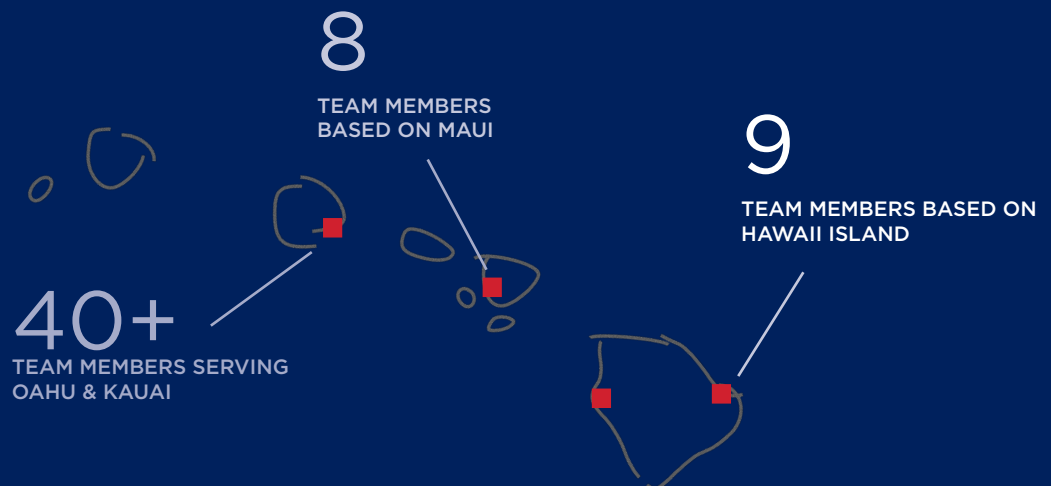
OFFICE LOCATIONS:

MAUI - KIHEI
300 OHUKAI ROAD
BUILDING B
KIHEI, HAWAII 96753
T: +1 808 875 1945

HAWAII ISLAND - WAIMEA - KAMUELA
CARTER PROFESSIONAL CENTER
65-1230 MAMALAHOA HIGHWAY, SUITE
#A-10B KAMUELA, HAWAII 96743
T: +1 808 883 3379

OAHU - HONOLULU
AMERICAN SAVINGS BANK TOWER
1001 BISHOP STREET, SUITE 2690
HONOLULU, HAWAII 96813
T: +1 808 521 2641

HAWAII ISLAND - HILO
820 PIILANI STREET, SUITE 202
HILO, HAWAII 96720
T: +1 808 934 7953



RLB recognizes the significance of diacritical markings in written Hawaiian language but have opted not to use them throughout this document as they display inconsistently across the program used to produce these materials.

FIRM INFORMATION

RLB IN HAWAII

RLB opened its first North American office in Hawaii in 1991 and has been involved in the planning, design and construction phases of landmark projects that define the built environment of the Hawaiian Islands.

RLB serves as a trusted advisor to public agencies and private developers, bringing imagination to life across a range of project types on the Island of Hawaii, with particular expertise in public and civic facilities. We leverage our proven management systems, cost control expertise, and understanding of stakeholder relations to deliver quality projects that enhance public services and shape communities.

From programming and design to construction and occupancy, RLB provides the technical expertise and independent assessments needed to balance project intent, construction costs, schedules, and risks, ultimately delivering leading facilities for thriving educational environments. Our on-the-ground team has successfully delivered high-profile projects in the residential, hospitality, commercial, and transportation sectors. We are deeply knowledgeable about the construction industry on Hawaii Island and have worked effectively with a diverse range of owners, architects, engineers, contractors, and subcontractors across the Islands.

We are committed to serving the Hawaii Island community, where we live, work, and play. Our team members are active participants in the Hawaii Island Chamber of Commerce, Hawaii Island Economic Development Board, and Hawaii Leeward Planning Conference.



HAWAII ISLAND EXPERTISE

We offer clients unbiased, expert advice on the feasibility, cost, and timing of construction projects from inception to completion, ensuring project success. With over 30 years of experience in Hawaii, RLB is well-versed in the technical demands of delivering services to facilities for the County of Hawaii. Our expertise enables stakeholders to make timely decisions that balance cost, time, quality, and risk, driving successful outcomes for various municipal projects.

- Administrative Facilities & Offices
- Airports
- Affordable Housing
- Area Development Plans
- Bridges
- Feasibility Studies
- Master Plan & Infrastructure
- Office Buildings
- Parks & Recreation
- Renewable Energy
- Residential
- Street Developments
- Training Facilities
- Utilities
- Water Distribution Systems

2

HAWAII ISLAND OFFICES

50+

EMPLOYEES ACROSS HAWAIIAN ISLANDS

1991

YEAR ESTABLISHED IN HAWAII

60

AVE. EMPLOYEES OVER 5 YRS.

4

HAWAII OFFICES STATEWIDE

30+

YEARS LOCAL EXPERIENCE

FIRM EXPERIENCE

BACKED BY A GLOBAL NETWORK

With a network that covers the globe and a heritage spanning over two centuries, RLB is a leading independent organization specializing in Project Management, Cost Consultancy and Advisory services.

- Boston
- Calgary
- Chicago
- Colombia
- Denver
- Hilo
- Honolulu
- Kansas
- Las Vegas
- Los Angeles
- Maui
- Mexico City
- Miami
- New York
- Phoenix
- Portland
- San Francisco
- San Jose
- Seattle
- St. Lucia
- Toronto
- Tucson
- Waikoloa
- Washington DC

24

AMERICAN OFFICES
IN KEY MARKETS

\$30B

NORTH AMERICA PROJECTS
DELIVERED IN 30 YEARS

3,000+

NORTH AMERICA PROJECTS
DELIVERED IN 30 YEARS

With a legacy of excellence spanning over 3,000 projects, encompassing various facilities across numerous sectors nationwide, RLB North America stands as a beacon of expertise and commitment. Our dedication guarantees that each endeavor surpasses expectations, delivering dynamic, cutting-edge spaces that enrich and define the heart of communities.

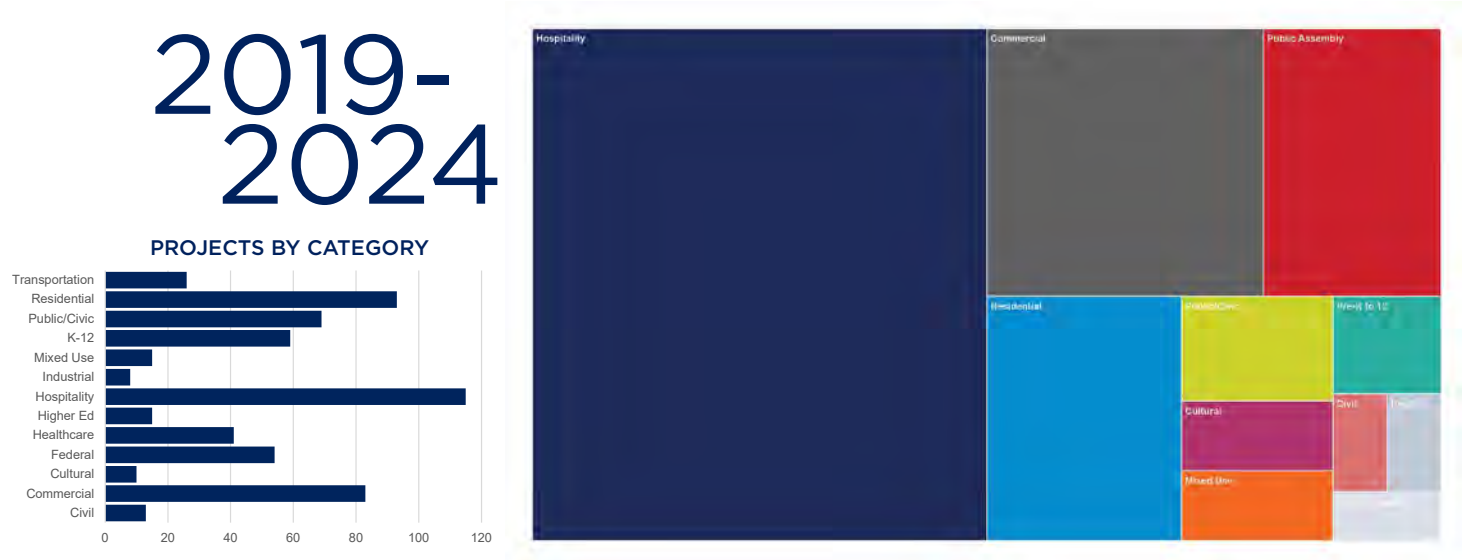


FIRM EXPERIENCE

VOLUME OF PROJECTS

RLB has an extensive track record in project management and development, boasting a portfolio of over 2,800 projects across various sectors. Within the realm of convention center development and tourism infrastructure, RLB has consistently delivered exceptional results. Throughout their tenure, the firm has actively participated in a significant number of projects, further solidifying its expertise and commitment to excellence in this field. Leveraging this wealth of experience and proven success, RLB stands poised to bring invaluable insights and innovative solutions to our clients on construction projects that serve communities across the Hawaiian Islands.

RLB has an extensive track record in project management and construction consultancy, boasting more than 600 completed projects across various sectors. This vast experience underscores our capability and reliability in delivering successful outcomes. Over the past five years alone, RLB has played a pivotal role in shaping the built environment, executing numerous projects with a steadfast commitment to excellence and ingenuity. Our dedication to providing solutions aligned with the specific requirements of every client stands as a cornerstone of our approach. RLB's extensive portfolio stands as a testament to our ability to consistently deliver favorable results, showcasing our reliability and capacity to meet and exceed expectations.



456
PROJECTS AS
CONSULTANT

2,800+
COMPLETED PROJECTS
DELIVERED IN 30 YEARS

600+
COMPLETED PROJECTS
DELIVERED IN 5 YEARS

145
PROJECTS AS
PRIME

FIRM EXPERIENCE

SERVICE CAPABILITY

RLB understands the complex demands of public construction programs across Hawaii and provides a proven and outcomes-driven approach to service delivery.

As construction professionals specializing in Project Management, Cost Consultancy and Advisory Services, we provide clients with independent management and unbiased, expert advice for all aspects of the feasibility, cost and time of construction projects, from project conception and site acquisition to final completion and commissioning.

Our range and depth of in-house expertise ensures you are equipped with the right construction advice when you need it, and tailored solutions that drive your desired results at every stage of your projects:

PROGRAM	DESIGN	PROCUREMENT	CONSTRUCTION	OCCUPANCY
				
<p>Due Diligence - Feasibility Studies</p> <p>Cost Planning</p> <p>Cashflow Modeling</p> <p>Program Scheduling</p> <p>Project Analysis & Reporting</p> <p>Permitting Strategy</p>	<p>Milestone Cost Estimates</p> <p>Cost Management</p> <p>Procurement Strategy & Management</p> <p>Design Management Support</p> <p>Document Management</p> <p>Schedule Management</p>	<p>Permitting Support</p> <p>Contractor Procurement</p> <p>Risk Management</p> <p>Schedule Management</p> <p>Contract Negotiations</p>	<p>Construction Management</p> <p>Cost Management</p> <p>Claims Analysis & Management</p> <p>Risk Management</p> <p>Independent Schedule Analysis</p>	<p>Expert Witness</p> <p>Forensic Investigation & Architecture</p> <p>Dispute Resolution</p> <p>Litigation & Arbitration Support</p>

////////////////////
Most Influence on Project Outcomes

////////////////////
70% Project Budget

FIRM EXPERIENCE

PROJECT MANAGEMENT SPECIALTY

RLB is dedicated to successfully delivering the project our clients expect through collaboration and proactive leadership. We understand the complexities of managing cost, quality and schedule which enable us to mitigate risk and ensure that our clients achieve maximum value for their investment. Our ultimate goal is to make sure our clients and their projects succeed.

Our expert team of project managers are adept at compiling robust contracts, integrating multi-faceted project components and directing the efforts of the design and construction team. We combine our strengths to assemble the best team appropriate for each client and project. Our team has a global understanding of the construction industry and offers a breadth of local knowledge and expertise to ensure that each project is completed successfully.

FEASIBILITY

- Definition of Client Requirements
- Review of Concept Design
- Budget Development
- Evaluation of Environmental Studies
- Cash Flow and Market Analysis
- Risk Analysis and Identification
- Value Engineering Studies
- Feasibility Studies and Recommendations

DESIGN AND DEVELOPMENT PHASE

- Advise on Consultant Selection
- Negotiate Consultant Fee and Contract
- Prepare Project Scope
- Value Management and Engineering
- Confirm Preliminary Design/Cost Estimate
- Provide Recommendations to Client
- Prepare Cost Plan
- Submit Design Status Reports
- Advise on Project Delivery Systems
- Prepare and Monitor Design Documentation
- Manage and Coordinate Consultant Team
- Chair Project Management Meetings
- Maintain Compliance with Client Objectives
- Negotiate with Authorities as required
- Constructability Reviews
- Provide Design and Feasibility Reports
- Obtain Client Approval and Sign Off
- Prepare and Monitor Project Schedule

DOCUMENTATION AND PRE-CONTRACT PHASE

- Formulate Contract Strategies
- Prepare Conditions of Contract
- Secure Authority and Client Approvals
- Manage Documentation
- Cost Control of Design against Budget
- Check Design against Client's Requirements
- Set up Management Reporting System
- Set up Cost Control Procedures
- Prepare Contract Administration Procedures
- Prepare Project Manual
- Coordinate the Bid Documents
- Prepare Bid Report with Recommendations
- Formalize and Execute Contract

CONSTRUCTION PHASE

- Initiate Contract Administration Procedures
- Monitor and Report Schedule Performance
- Coordinate Documentation for fast tracking
- Monitor Contract Compliance
- Manage Documentation
- Identify potential delays and take action
- Process Progress Payments
- Monitor, analyze, and forecast cash flows
- Enforce cost control procedures
- Chair Project Meetings
- Evaluate claims and manage disputes
- Prepare Monthly Project Progress Reports
- Identify potential cost overruns
- Evaluate extension of time claims
- Monitor Contractor's performance
- Coordinate FF&E and Closeout Procedures
- Monitor Quality Control

FIRM EXPERIENCE

COST CONSULTANCY SPECIALTY

SERVICES

RLB provides full cost management services from conceptual and detailed cost estimating, cost planning, cost control, and construction risk management to bid and contract documents, financial administration of construction contracts, and dispute resolution analyses. The firm's construction cost managers have experience producing detailed cost estimates for all building types. RLB also advises building owners on sustainability practices and specific regional variances.

COST PLANNING

- Project budgeting
- Development of a construction Cost Model
- Design-to-cost system targets

COST CONTROL

- Conceptual design construction cost estimating
- Detailed design construction cost estimating
- Cost Modeling and systems cost comparison studies
- Value Engineering and cost reduction strategies
- Peer Review cost estimating
- GMP review and cost reconciliation prior to award

CONSTRUCTION PHASE SERVICES

- Contractual advice and contract administration
- Payment application review
- Change Order review and negotiation

DATA ADVANTAGE

COST LIBRARY

Having provided cost estimating and cost control services in Hawaii for 30 years, RLB has assembled a comprehensive library of current and historical cost data that we leverage to provide you the most accurate and up-to-date construction pricing information in the market.

Our databases and pricing are continually updated to reflect recent bid results that are published as well as those that RLB receives through our Project Management role facilitating the RFP and bid process. Further, the independent cost research we conduct to inform our **Quarterly Cost Report** enable our team stay on the cutting edge of price fluctuations and cost trends reported by industry contacts and we are regularly in touch with local suppliers on the current and projected cost of materials and resources.

COST BENCHMARKING

Our involvement in more than 600 projects in the last five years, our presence and unparalleled understanding of the Hawaii market has allowed us to collect and measure key project metrics and high-level unitized project data beyond construction costs.

Our benchmarked data is inclusive of overall project costs, construction costs, schedules, margins and adjustments and other metrics to facilitate discussions with clients, strategize internally among the RLB project team, and conduct rough conceptual estimate checks on a project as needed.

▶ COST CERTAINTY

- Detailed and accurate cost estimates for all building types
- Pricing that is continually updated, reflective of the current bidding market and escalation RLB is reporting
- Supports change order management and/or contractor negotiations



▶ VALUE DELIVERED

- Past project data beyond construction costs to reference and advise you throughout a project
- Provides framework to compare, contrast and ensure your project 'design to budget' is being met
- Allows for design / scope adjustments early on in a project to prevent budget overruns

FIRM EXPERIENCE

SCHEDULING SPECIALTY

A TECHNICAL AND FORENSIC APPROACH

RLB clearly analyzes the logical steps in the documentation and construction stages of the project and produces schedules that set down the timing relationships between these activities and the duration for each. This provides an independent control mechanism to review the progress of the total development during both the documentation and construction phases and allows for direct reporting to the client on any non-performance by individuals or companies; the extent of the problems; the time effect it may have on the final completion of the project; and any remedial action which could be taken.

Construction owners, such as public agencies or developers, trust RLB's expertise in performing technical analysis and audits of contractor submitted schedules. RLB leverages its experience to ensure that contractor-submitted schedules are compliant with contract requirements; identify risks to timely completion; and provide an independent and objective analysis that predicts accurate project completion milestones. RLB's Advisory service line also provides full-scale forensic schedule and delay analysis services for contractors and owners with an emphasis on accuracy and timely resolution.

OUR SCHEDULING SERVICES INCLUDE:

SCHEDULING SERVICES FOR CONSTRUCTION OWNERS

- Specification writing
- Master development & program schedules
- Design & permit schedules
- Audits & analysis of contractor submitted schedules
- Review & defense against delay claims
- Creation of schedule performance dashboards

PROJECT CONTROLS

- Cost tracking & forecasting
- Risk management & monitoring
- Evaluate proposal schedule submissions
- Perform feasibility studies
- Earned value management
- Change management
- Dash boarding & other reporting

MASTER PROGRAM SCHEDULING

- Develop portfolio master schedule
- Develop Program master schedules
- Updates schedules on a monthly basis
- Assist in writing scheduling and reporting specifications to be incorporated into outside stakeholder contracts

RISK MANAGEMENT

- Risk identification workshops
- Track risks
- Perform a quantitative risk analysis to allow client to mitigate or eliminate risks with little resources or costs and more accurately estimate contingencies and program durations

▶ DELIVERING TIME CERTAINTY

Project scheduling and related services provide a logical mechanism for integrating a formal time control procedure into any project that seeks to minimize delays during the documentation and construction phases.

FORENSIC DELAY ANALYSIS

- Identify potential delays and slippages
- Identify likely culpability and quantum
- Evaluate potential delays concurrently with construction (affords project team ability to recover/mitigate risk)
- Assist in development of negotiation strategies

STAKEHOLDER RESOURCE

- Develop program-wide schedule standards and specifications
- Be a resource to contractors when it comes to assembling schedules
- Facilitate pull planning sessions
- Share insights with contractor and the project team through the use of key performance indicators

FIRM EXPERIENCE

REAL ESTATE & ADVISORY SERVICES

Combining the strengths of our collaborative history with prior clients and stakeholders, our experience on similar projects, and our proven methods, our staff can provide your team with intelligent business and project solutions to contribute to the success of your investments.

Our team of cost estimators, quantity surveyors, project managers and claims and dispute resolution specialists are experienced and qualified to evaluate and review project parameters prior to a property transaction; through construction to monitor the performance of the project teams to protect your investment; and throughout an asset's lifecycle where RLB reviews, monitors and maintains the value of a property or through corrective or preemptive actions.

On any construction project there can be differences of opinion regarding plans and specification requirements, disputes, change orders, delays, and events/issues that require prompt decisions by the owner and contractor. While RLB seeks to prevent construction claims and disputes through our pre-construction risk assessment, planning, scheduling, and dispute avoidance services, we are experienced in helping clients already involved in a dispute mitigate their exposure and assist in the analysis and resolution of a claim or dispute that has occurred.

RLB's staff practice real-time, on-site dispute resolution. It provides a forum and a process to resolve issues that the parties cannot settle themselves, and allows for timely resolution throughout the construction project rather than having post-contract claims and disputes.

Our wide range of experience affords us the ability to prepare comprehensive construction claims, counterclaims and formulate claim defenses of the highest professional and technical quality. Additionally, our services extend through all aspects of resolution whether expert testimony services are needed at a hearing, or providing qualified and accredited mediators or arbitrators experienced in resolving construction disputes.

SERVICES

- Alternative Dispute Resolution
- Building Quality Assessments (BQA)
- Change Order Analysis
- Construction Claims
- Construction Defect Investigation
- Construction Economic Advice
- Contract Close-Out
- Cost Auditing
- Dispute Avoidance
- Dispute Resolution
- Distressed Real Estate Services
- Due Diligence
- Expert Witness Testimony
- Insurance Claims
- Land Lease Matters
- Litigation Support
- Performance and Payment Bond Investigations
- Property Condition Assessment
- RELifing
- Replacement Cost Estimates
- Risk Mitigation
- Schedule Delay Analysis
- Tax Appeals

PERSONNEL QUALIFICATIONS

REGIONAL LEADERSHIP

ERIN KIRIHARA EXECUTIVE VICE PRESIDENT



Years of Experience:

- 20 Years

Erin Kirihara, Executive Vice President at Rider Levett Bucknall North America, leads the Hawaii Region and sits on the RLB North American Board. With extensive experience spanning Hawaii and the U.S., she’s managed projects from \$1M to \$800M across diverse sectors. Known for on-time, on-budget delivery, Erin’s expertise in the commercial and hospitality sectors, extends to various industries. She excels in planning, budgeting, team assembly, and risk management, ensuring client success. Her multi-billion-dollar portfolio includes residential, institutional, industrial, and public projects, showcasing her versatile leadership.

Academic Qualifications:

- Bachelor of Arts, Business Administration, Chaminade University, Honolulu, HI

Select Project Experience:

- Mauna Kea Beach Hotel Autograph Collection Improvements
- Hilton Waikola Village Makai Tower Development
- DAGS-DOH-PSD Hawaii State Hospital New Patient Facility
- DAGS Wahiawa Civic Center Facility
- DOE Solomon Elementary School Improvements
- DOT-A Daniel K Inouye International Airport - Restroom Improvements OST Phase 1
- HHFDC-JUD Hale Kalele Affordable Rental Housing and Judiciary Facility
- Hawaii Convention Center Capital Improvement Projects

CASSIE IDEHARA, MRICS, CCM VICE PRESIDENT



Years of Experience:

- 32 Years

Certifications:

- Member of Royal Institute of Chartered Surveyors (MRICS)
- Certified Construction Manager (CCM)

Cassie Idehara is a Vice President at RLB’s Honolulu office, specializing in construction costs, budget management, and Quantity Surveying with over 30 years of national and international expertise. She has managed projects exceeding \$800 million in construction value, offering comprehensive cost and project management services. Cassie’s proficiency extends to all project phases, leveraging her Certification as a Construction Manager. Her portfolio includes advising clients on cost, time, quality, and risk for multi-billion dollar construction projects in Hawaii.

Academic Qualifications:

- Bachelor of Building in Quantity Surveying, University of South Australia, Adelaide, Australia
- Diploma in Building (Quantity Surveying) Singapore Polytechnic, Dover Road, Singapore

Select Project Experience:

- Mauna Kea Beach Hotel Autograph Collection Improvements
- Hilton Waikola Village Makai Tower Development
- University of Hawaii Maui College Hale Renovations
- DOE Solomon Elementary School Improvements
- DAGS-DCR Women’s Community Correctional Facility
- DOT-A Daniel K. Inouye International Airport Restroom Improvements OST Phase 1
- HHDFC The Central Ala Moana Facility
- HHFDC-JUD Hale Kalele Affordable Rental Housing and Judiciary Facility

PERSONNEL QUALIFICATIONS LEADERSHIP

MAELYN UYEHARA PRINCIPAL



Years of Experience:

- 31 Years

Maelyn Uyehara is a seasoned Principal Cost Manager at RLB’s Honolulu office, with more than 30 years of diverse project experience across the State of Hawaii, as well as US National and International project sectors. She possesses a deep understanding of programmatic and strategic cost considerations crucial for planning, designing, constructing, and expanding various facilities. Maelyn serves as a trusted advisor, offering expertise in milestone cost estimating, feasibility studies, cost modeling, bid analysis, value engineering, and more. Clients rely on her comprehensive skill set for optimal capital investment planning and execution.

Academic Qualifications:

- Bachelor of Science, Civil Engineering, University of Hawaii, Honolulu, HI

Select Project Experience:

- DOE Hilo High School Parking Structure Due Diligence
- Mauna Kea Beach Hotel Autograph Collection Improvements
- Courtyard King Kamehameha’s Kona Beach Hotel Improvements
- DAGS-DCR Women’s Community Correctional Facility Expansion
- DAGS-DCR Facilities Statewide Sustainability Strategic Master Plan
- DOT-A Daniel K. Inouye International Airport Baggage Handling Improvements Phase II
- HHFDC-JUD Hale Kalele Affordable Rental Housing and Judiciary Facility
- DAGS-DOH-PSD Hawaii State Hospital New Patient Facility

GUIA LASQUETE, LEED GREEN ASSOCIATE PRINCIPAL



Years of Experience:

- 29 Years

Certifications:

- LEED Green Associate
- Erosion and Sediment Control Plan Coordinator

Guia Lasquete, a Principal at RLB, oversees the Hawaii Island offices in Hilo and Waikoloa, bringing nearly 30 years of national and international experience in quantity surveying, cost management, and project management. With certification as a LEED Green Associate, Guia actively contributes to LEED design processes, emphasizing cost efficiencies and sustainable principles. Her expertise spans various sectors including residential, commercial, healthcare, education, government projects, with a specialization in the hospitality sector.

Academic Qualifications:

- Bachelor of Science, Quantity Surveying, Construction Economics & Management, Dublin Institute of Technology, Ireland
- Bachelor of Science, Construction Management, California Polytechnic State University, San Luis Obispo, CA

Select Project Experience:

- County of Hawaii Central Fire Station Re-roof
- County of Hawaii Papaaloa Park Master Plan & Ph 1
- County of Hawaii 34 Rainbow Drive OHCD Assessment
- Keahuolu Courthouse - Kona Judiciary Court Complex
- DAGS-DCR Hawaii Community Correctional Waianuenue Building Security Modifications
- DOE Hilo High School Parking Structure Due Diligence
- DOTA Kona Airport Access Control and CCTV System Upgrade
- Hilo Medical Center Hospital Expansion

PERSONNEL QUALIFICATIONS LEADERSHIP

PAUL BELSHOFF ASSOCIATE PRINCIPAL



Paul Belshoff serves as an Associate Principal at RLB's Maui Office, leading project teams and ensuring client success on Maui. With more than 18 years of construction project management experience across various sectors including hospitality, residential, commercial, and more, Paul offers expert advice in budget preparation, project performance tracking, and team dynamics monitoring. His proactive management style enables timely responses and effective risk mitigation, supported by his engineering education and extensive project management experience. Paul excels in understanding technical challenges and providing solutions that contribute to project success.

Years of Experience:

- 18 Years

Certifications:

- Engineer in Training (EIT)
- HDOT Field Sampling & Testing: Soils & Aggregates

Academic Qualifications:

- Bachelor of Science, Civil & Environmental Engineering, University of Louisville, Louisville, KY

Select Project Experience:

- County of Maui Central Maui Facilities Assessment
- DOT-A South TSA Checkpoint Kahului Airport Facility
- Kamehameha Schools Various Projects
- American Savings Bank Campus Property Development
- Lilia Waikiki Property Development
- Mott Smith Laniloa Condominium Recreation Deck Improvements
- Royal Lahaina Resort & Bungalows Renovation
- Maui Bay Villas, A Hilton Grand Vacations Club Property Development

TERENCE YOUNG, P.E., CCM ASSOCIATE PRINCIPAL | CIVIL, PE-17839



Terence Young, is an Associate of RLB and licensed Professional Engineer in the RLB Honolulu office. He brings more than 20 years of experience in overseeing landmark developments across the State of Hawaii. With a project portfolio exceeding \$1.25 billion, Terence is adept at managing all phases of construction projects, from preconstruction to closeout. His expertise as a Certified Construction Manager encompasses contract execution, quality control, safety monitoring, progress reporting, change proposal negotiation, and maintaining effective communication among project stakeholders. Terence's skillset ensures successful navigation of both new build and renovation projects with a focus on delivering high-quality results.

Years of Experience:

- 20 Years

Certifications:

- Professional Engineer (PE)
- Certified Construction Manager (CCM)

Academic Qualifications:

- Bachelor of Science, Civil Engineering, Purdue University, Lafayette, IN

Select Project Experience:

- COH Lono Kona Sewer Improvements
- DOT-A Kona Airport Access Control and CCTV System Upgrade
- DOE Various Statewide Construction Management Services
- DAGS-DOH-PSD Hawaii State Hospital New Patient Facility
- Hawaii State Federal Credit Union Headquarter Renovation
- Harry and Jeanette Weinberg Hookupu Center Renovation
- Hilton Vacation Club Ka'anapali Beach Maui Master Plan
- Grand Wailea, A Waldorf Astoria Resort Improvement Projects

PERSONNEL QUALIFICATIONS LEADERSHIP

BLAIR BANKER, LEED AP ASSOCIATE



Blair Banker, an Associate at RLB Honolulu, leads the firm’s Advisory Service Line in Hawaii with nearly 50 years of construction industry experience. He specializes in providing project consulting services, claim analysis, expert opinions, and construction defect forensics to various stakeholders. Blair’s expertise lies in technical investigation reporting, project document analysis, cost allocations, and scheduling, helping clients avoid claims and disputes. With a track record of managing projects worth billions of dollars across the Pacific and East Coast regions, Blair offers independent evaluations and advisory services across a wide range of project types and complexities.

Years of Experience:

- 50 Years

Certifications:

- LEED Accredited Professional

Academic Qualifications:

- Bachelor of Arts, Construction Management, Wentworth Institute of Technology, Boston, MA

Select Project Experience:

- Hilo Medical Center Hospital Expansion
- Kulaimano Elderly Housing Phase 4
- DOT-A Daniel K. Inouye International Airport, Baggage Handling System Improvements
- DOT-A Kahului Airport Ground Level Enclosure
- Hawaii Convention Center Capital Improvement Projects
- Kaanapali Beach Hotel Due Diligence Support
- The Queen’s Medical Center Cost Estimating/Budgeting for Campus Capital Projects
- Ward Village Master Plan

YONG SHI, CCP ASSOCIATE



Yong Shi, an Associate and Certified Cost Professional at RLB Honolulu, specializes in Cost Consulting with a focus on developing and maintaining project budgets and cost estimating. Yong has more than 13 years of experience across various sectors including residential, hospitality, commercial, mixed-use, industrial, civil, federal, and municipal projects. Notable for providing ongoing support for a developer’s 60-acre master plan, Yong excels in advising on cost control strategies and offering expertise in budget development. Leveraging a background in general contracting, he provides detailed cost estimates and effective cost management solutions for clients.

Years of Experience:

- 13 Years

Certifications:

- Certified Cost Professional (CCP)
- Engineer in Training (EIT)
- OSHA 30

Academic Qualifications:

- Bachelor of Science, Physics, Anhui University, Hefei, China
- Ph.D., Chemical Physics, University of Science and Technology of China, Hefei, China
- Master of Science, Civil Engineering, University of Hawaii, Honolulu, HI

Select Project Experience:

- Ulupono Initiative Parking Cost Study
- DOT-A Daniel K. Inouye International Airport Restroom Improvements OST Phase 1
- HHFDC-JUD Hale Kalele Affordable Rental Housing and Judiciary Facility
- Kalaeloa Infrastructure Development
- Ward Village Master Plan
- Ritz-Carlton Maui, Kapalua - Aloha Pavilion and Garden Improvements
- Grand Wailea, A Waldorf Astoria Resort Improvement Projects
- Makena Ranch Improvements For Ulupalakua

PERSONNEL QUALIFICATIONS LEADERSHIP

NICKI DOCKERY
ASSOCIATE



Nicki Dockery, an Associate at RLB Honolulu, possess nearly 40 years of experience providing Quantity Surveying and Cost Management Services across North America and Oceania. She specializes in controlling project costs throughout design and construction phases across various sectors including commercial development, hospitality, residential, and industrial. With expertise in negotiation, contract administration, and budget monitoring, she delivers comprehensive cost management solutions and advises on feasibility and contract-related matters.

Years of Experience:

- 39 Years

Certifications:

- New Zealand Institute of Quantity Surveyors (NZIQS)
- Registered Quantity Surveyor (NZIQS)
- MCACES, 2nd Generation (MII) Basics Training

Academic Qualifications:

- Diploma, Quantity Surveying, Carrington Technical Institute, Auckland, New Zealand
- Diploma, Quantity Surveying, Carrington Polytechnic, Auckland, New Zealand

Select Project Experience:

- Hilo Medical Center Hospital Expansion
- Waikoloa Village Residential Development
- DOE King Kekaulike High School Black Box Theater Facility
- DOT-A Kona International Airport Hawaiian Airlines Support Facility
- DOT-A Daniel K. Inouye International Airport Restroom Improvements OST Phase 1
- DAGS-DCR Women’s Community Correctional Facility Expansion
- HHFDC-JUD Hale Kalele Affordable Rental Housing and Judiciary Facility
- Hawaii Convention Center Capital Improvement Projects

At RLB, we believe the best outcomes only come from the best people.

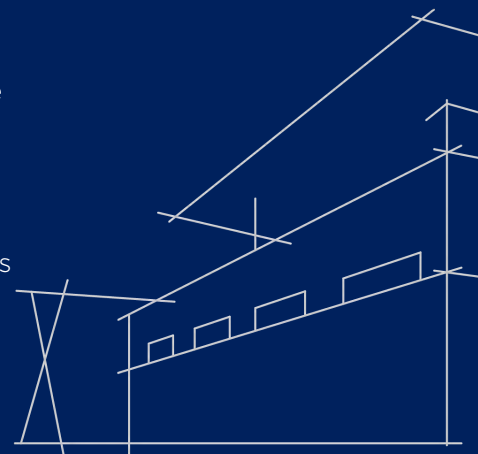
The diverse composition of our workforce contributes greatly to the dynamic, innovative and inclusive nature of our business. It also enhances our perspective and enables us to deliver sustainable, competitive advantages to our clients through the passion of our people.

Successful project outcomes and personal accomplishments of our employees inspire all of us here at RLB.

We strive for excellence, to provide the very best outcomes and support our clients in creating strong community links and vibrant places for people to live, work and play.

In addition to the licensed professionals on the previous page, RLB employees across our Hawaii offices hold the following registrations and certifications:

- Certified Construction Manager (CCM)
- Certified Cost Professional (CCP)
- Construction Quality Management for Contractors (CQM)
- Hawaii Department of Transportation FSTQP Certifications
- LEED Accredited Professional
- LEED Green Associate
- New Zealand Institute of Quantity Surveyors (NZIQS)
- Professional Engineer (PE)
- Royal Institution of Chartered Surveyors (RICS)
- WELL Accredited Professional



PERFORMANCE - PAST PROJECT PROFILES

PROFILE FEATURE: HAWAII ISLAND

DHHL PUUKAPU HYBRID WATER SYSTEM ▼

KAMUELA, HAWAII ISLAND

CLIENT	STATE OF HAWAII, DEPARTMENT OF HAWAIIAN HOME LANDS
SERVICES	CONSTRUCTION MANAGEMENT
COMPLETION	ONGOING

RLB served as Construction Manager for the original project, which consisted of the construction of a new private water system to service 184 lots in the Puukapu Pastoral Subdivision via The Hawaii Department of Water Supply. As Construction Managers for the Puukapu Hybrid Water System Project, we worked closely with DHHL, A/E Consultants, Utility Entities, Contractor, Homesteaders, DLNR, State and County Agencies. Through RLB's collaboration we ensured the coordination of the work plan was done with minimal impact to the project schedule.

Given our experience with the project, RLB has been engaged by the Department of Hawaiian Home Lands to provide overall Project Management Services for an Assessment of the water system, inclusive of the following components:

- Overall System Assessment
- Design & Construction Oversight
- Asset Management Plan Development
- Emergency Response Plan Development



PERFORMANCE - PAST PROJECT PROFILES

PROFILE FEATURE: HAWAII ISLAND

KAMEHAMEHA SCHOOLS OUTSOURCED PROJECT MANAGEMENT SERVICES ▼

HAWAII ISLAND

CLIENT	KAMEHAMEHA SCHOOLS
SERVICES	PROJECT MANAGEMENT
COMPLETION	ONGOING

RLB has become a trusted advisor to Kamehameha Schools helping the educational trust to enhance its educational facilities across the Island of Hawaii. Since 2014, RLB has been awarded several contracts to provide Outsourced Project Management services for major repairs and capital improvement projects of the Kamehameha Schools Hawaii Campus (KSH) and the Land Asset Division (LAD) sites.

Our role as the Project Manager is to assist Kamehameha Schools in undertaking various Design-Bid-Build projects that range from repair and maintenance and modernization efforts, to special initiatives including construction of new structures. RLB's scope of responsibilities spans the Design Phase, Construction Bid & Negotiation Phase and Construction Administration Phase of each project under the OSPM contract supporting the Facilities Development & Support Division.

In addition to our role on OSPM contracts, RLB has provided Cost Consultancy Services to support the development of various commercial assets managed by Kamehameha Schools, allowing the owner and AE consultants to make sound, informed decisions regarding the financial feasibility and constructibility of each component within the trust's portfolio,



PERFORMANCE - PAST PROJECT PROFILES

PROFILE FEATURE: HAWAII ISLAND

DAGS-JUD KEAHUOLU COURTHOUSE ▼

KAILUA-KONA, HAWAII ISLAND

CLIENT	AHL, STATE OF HAWAII DEPARTMENT OF ACCOUNTING AND GENERAL SERVICES
SERVICES	CONSTRUCTION MANAGEMENT, COST CONSULTANCY
COMPLETION	2021

Built on a ten-acre parcel in Kailua-Kona, Hawaii, the new 140,000 SF judiciary complex centralizes the court system on Hawaii Island that previously operated across three separate locations and in buildings that were not designed to serve the specific needs of Hawaii’s civil, criminal, and family court justice system.

The new complex comprises five courtrooms, a law library, self-help center, conference rooms, holding cells, witness rooms, attorney interview rooms and a grand jury meeting room. In addition, site improvements created 290 ongrade parking stalls and space for future expansion or courtroom additions. The building is designed to be water, energy and environmentally efficient and sustainable.

RLB provided Cost Consultancy Services for the \$98.5M project beginning during the Program Development and Schematic Design through to bid set drawings and construction phase cost services. In addition, RLB was engaged to provide Construction Management Services from preconstruction to post-construction phases given our unique capability to equip our client, the Project Architect, and Owner, a State of Hawaii agency, a skilled team based on the Island of Hawaii. With boots on the ground responsible for project oversight, the team carried out extensive daily on-site inspection and reporting efforts that ensured the project was delivered to the highest quality.



PERFORMANCE - PAST PROJECT PROFILES

PROFILE FEATURE: HAWAII ISLAND

HILO MEDICAL CENTER ▼

HILO, HAWAII ISLAND

CLIENT	HILO MEDICAL CENTER, VARIOUS CONSULTANTS
SERVICES	PROJECT MANAGEMENT, COST CONSULTANCY
COMPLETION	2020

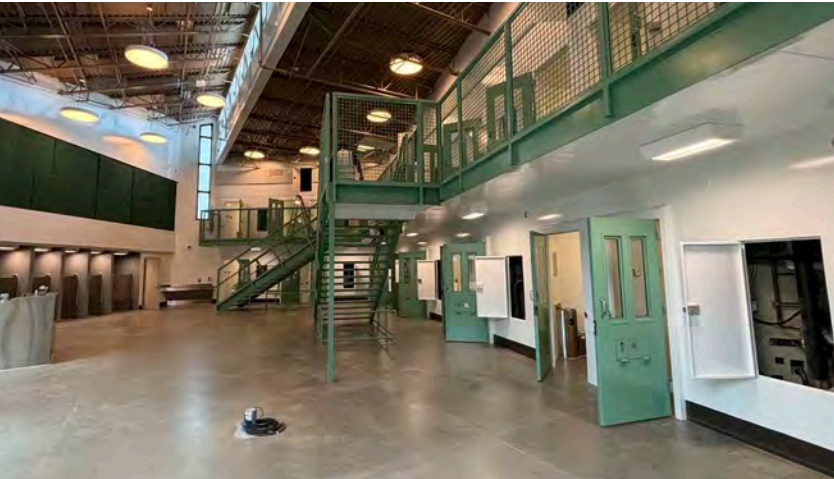
Located on a 20-acre campus on the Island of Hawaii, Hilo Medical Center is a leader in providing inpatient and outpatient care. RLB has provided Project Management Services and Cost Consultancy support for numerous construction projects across the Hilo Medical Center healthcare network including the following projects:

- Air Handlers 14A & 14B
- Cardiology Clinic
- Center Residency Clinic
- Emergency Room
- Extended Care Facility
- Hilo Medical Center Hospital Expansion
- Hilo Medical Center Master Plan
- Hospital Expansion
- Imaging CT & MRI Facilities
- Keaau Health Clinic
- Office Renovation
- Oncology Pharmacy Renovations
- Parking Lot Improvements
- Rural Health and Telehealth Center
- Yukio Okutsu State Veterans Home



PERFORMANCE - PAST PROJECT PROFILES

STATE OF HAWAII



DAGS-DCR HAWAII COMMUNITY CORRECTIONAL CENTER HOUSING EXPANSION ◀

HILO, HAWAII ISLAND

RLB served as Construction Manager for new construction of a new Medium Security Housing Unit expanding total operational capacity from 226 inmates to 274 at the existing Hawaii Community Correctional Center. Given the projects we have successfully delivered on behalf of DAGS, and our capability to equip our client a skilled team based in Hilo, the RLB team will oversee the project's construction and closeout phases. With boots on the ground responsible for project oversight, the team facilitates project progress and teamwork among the project team, carries out extensive daily on-site inspection and reporting efforts that ensure the project is delivered to the highest quality.



DAGS-DOH-PSD HAWAII STATE HOSPITAL NEW PATIENT FACILITY ◀

KANEOHE, OAHU

RLB provided Construction Management Services to the State of Hawaii Department of Accounting and General Services for development of a new 144-bed forensic psychiatric facility comprising approximately 170,000 GSF to be built on the upper campus of the existing Hawaii State Hospital in Kaneohe, Hawaii. Prior to our involvement as Construction Manager, RLB provided a ROM cost estimate for the preferred plan for the master-planned project that aligned within 5% of the Design-Build contractor bid price.



DAGS-DCR WOMEN'S COMMUNITY CORRECTIONAL CENTER ◀

KAILUA, OAHU

RLB delivered Cost and Construction Management Services for the upgrade of the Women's Community Correctional Center. The project involved upgrading existing facilities, including constructing new Administration and Intake Buildings, a Housing Dormitory, and upgrading the asphalt parking lot to increase prisoner capacity. Acting as a cost consultant to the local architect, RLB provided milestone cost estimates. Additionally, RLB's Construction Management oversaw the approximate \$45M expansion using the Design-Bid-Build method of project delivery.

PERFORMANCE - PAST PROJECT PROFILES

STATE OF HAWAII



DOTA STATEWIDE CONSTRUCTION MANAGEMENT SERVICES FOR MAINTENANCE & REPAIRS PROJECTS ◀

STATEWIDE

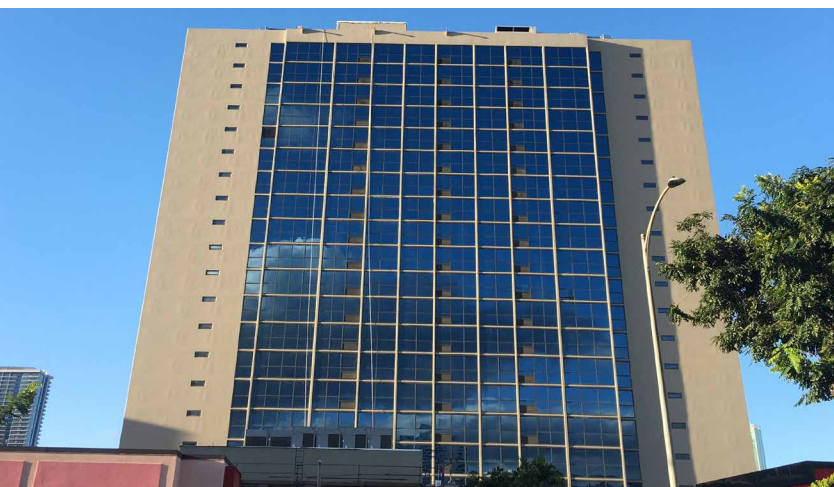
RLB provided comprehensive Construction Management services for the airports in Honolulu, Kona, Maui, Molokai, Kauai, and Lanai on an “as-required” basis, specializing in General Engineering services that include construction administration and inspection. Our projects have encompassed repaving the So Ono parking lot, improving IITB parking shelter structures at the 2nd floor level entrance, repairing the Ewa Concourse Gate 26 Lounge, and enhancing storage on the 3rd floor level of IITB. Additional tasks have involved electrical feeder repairs, terminal roof repairs, skylight renovations, and escalator repairs.



DOE SOLOMON ELEMENTARY SCHOOL CAMPUS IMPROVEMENTS ◀

SCHOFIELD BARRACKS, OAHU

RLB serves as the Construction Manager for improvements to the DOE’s Solomon Elementary School Campus, situated at Schofield Barracks Army Base in Wahiawa, Oahu. The ongoing \$80M redevelopment project involves the complete demolition and reconstruction of the Administration building, classroom building, cafeteria, and play areas on the school campus. The project occurred throughout four phases over a four-year duration.



HHFDC-JUD HALE KALELE ◀

HONOLULU, OAHU

RLB oversaw Construction Management and Cost Estimating Services for the Hale Kalele Mixed Use Development project in Honolulu, marking the State of Hawaii’s inaugural inter-agency collaboration between the Hawaii Housing Finance and Development Corporation (HHFDC) and the Judiciary (JUD). The endeavor involved erecting a new 20-story residential tower featuring a 34,000 GSF judiciary complex spanning the ground and second floors. The tower’s remaining levels accommodate close to 200 units designated for 30% and 60% Area Median Income (AMI), complemented by an adjacent 5-story parking structure. Recognized as a Transit-Oriented Development project, Hale Kalele is in strategic proximity to a forthcoming rail station.

PERFORMANCE - PAST PROJECT PROFILES

DEVELOPMENT & INFRASTRUCTURE



KINGS' LAND MULTI-PHASE DEVELOPMENT ◀

WAIKOLOA, HAWAII ISLAND

Kings' Land, a Hilton Grand Vacations Club timeshare resort, featuring six progressive phases of development that have continually enhanced the property. Since the project's inception, RLB has played a crucial role in this multimillion-dollar endeavor. Upon full build-out, the resort will boast over 800 timeshare units, offering 1, 2, and 3-bedroom options, along with amenities such as a pool, BBQ pavilion, parking, and extensive landscaping. Throughout the project, RLB has provided comprehensive cost management, scheduling, and project management oversight as the Owner's Representative for Hilton Grand Vacations.



CENTRAL MAUI FACILITIES ASSESSMENT ◀

WAILUKU, MAUI

RLB assisted the Department of Parks & Recreation for an analysis of selected facilities such as athletic facilities, gym, outdoor pool, community center, approx. 20 parking lots, and over 20 restrooms located in Wailuku, Waihee and Waikapu in Maui to assess physical condition and recreational use of DPR's assets, identify revenue generating opportunities and prepare benchmarks to assist with recreational programming, maintenance, and capital planning to develop short and long-term capital planning asset management for all parks and recreational facilities in the County of Maui.



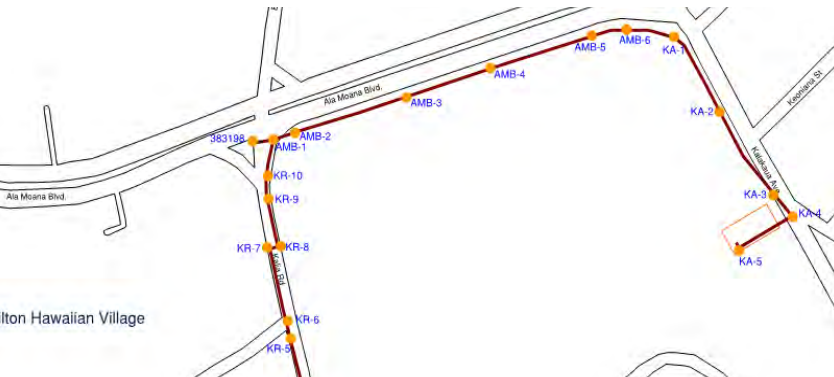
WARD VILLAGE MASTER PLAN ◀

HONOLULU, OAHU

RLB has become a trusted advisor to The Howard Hughes Corporation helping to bring the 60-acre Ward Village Master Plan to life in the Hawaii Community Development Authority (HCDA) Special Development District. Through development of new residential towers and commercial areas, these landmark projects are transforming the Kakaako neighborhood from a former warehouse area into a dynamic urban community. We have provided a range of Project Management, Cost Consultancy and Advisory Services to help the client make informed decisions regarding each component within the master plan and drive the developer's desired outcomes.

PERFORMANCE - PAST PROJECT PROFILES

MASTER PLAN & INFRASTRUCTURE

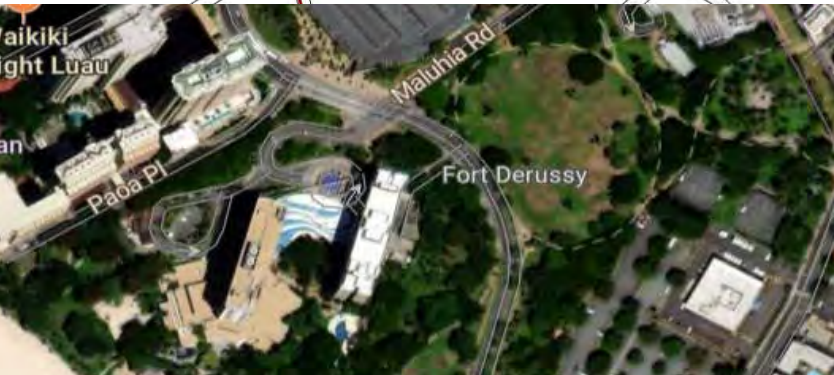


KALIA FORT DERUSSEY WASTEWATER SYSTEM IMPROVEMENTS ◀

HONOLULU, OAHU

RLB provided project management services for the construction of the Hilton Grand Vacations Club Grand Islander tower in Honolulu. The City and County of Honolulu mandated upgrading the existing sewer line serving the Hilton Hawaiian Village campus, a prerequisite for the project. This \$25 million initiative included installing a new sewer line alignment across City, State, and U.S. Army Garrison Hawaii (USAG-HI) property, connecting area hotels and parts of the Ala Moana community to the Fort DeRussy Wastewater Pump Station wet well. The replaced sewer line was actively in use.

To ensure uninterrupted sewer service during construction, multiple bypass lines were installed. A collaborative Plan of Action for the Treatment of Human Remains and Native Hawaiian Cultural Items was developed with USAG-HI and descendants of the Kalia area. All ground-disturbing activities followed archaeological and cultural monitoring protocols outlined in the plan. Despite challenges, our project management team maintained effective communication and progress among the three government entities involved.



ALA MOANA BOULEVARD IMPROVEMENTS ◀

HONOLULU, OAHU

RLB provided Project Management Services for The Grand Waikikian timeshare tower development at the entrance to Waikiki, encompassing new tower construction alongside renovations to the Duke Kahanamoku Lagoon and Ala Moana Boulevard Improvements. The road reconstruction involved demolishing existing structures, removing pavement, relocating utilities, and upgrading surrounding areas within an operational resort campus. This complex endeavor required numerous legal agreements with neighbors and the Hawaii State Department of Transportation, crucial for managing traffic safety along Ala Moana, a key route linking Downtown Honolulu to Waikiki. The project achieved zero accidents.

The scope also included sidewalk and curb reconstruction, and installations of Army Signal Telecommunications Ductbank and Line. As Project Manager, RLB oversaw comprehensive coordination among the owner, consultants, contractor, and public agencies, navigating extensive permitting requirements.



CLIENT REFERENCES

A TRUSTED ADVISOR

Our reputation as an industry leader is based on our proven ability to add value to our clients' projects by continuously improving and enhancing our services and by providing the best talent and expertise available.

In our more than 30 years of professional practice in the State of Hawaii, RLB has become known for our quality work product and proactive leadership on each project we serve.

Long-standing relationships are our reward for a history of consistently exceeding our clients' service and quality expectations. As a testament to this, the majority of RLB projects are derived from trusting and successful relationships with our existing client base.

We welcome you to contact our valued clients so they can express to you why they continue to choose RLB as their trusted advisor.

DANIEL JANDOC

Section Head

State of Hawaii, Department of Accounting and General Services - Project Management Branch

1151 Punchbowl Street, Room 430

Honolulu, HI 96813

T: +1 808 586 0469

E: daniel.jandoc@hawaii.gov

JOANNE KRIPPAEHNE

Capital Improvement Administrator

State of Hawaii, The Judiciary

1111 Alakea Street, 6th Floor

Honolulu, Hawaii 96813

T: +1 808 539 4784

E: joanne.m.krippaehne@courts.hawaii.gov

BRENDA LOWREY

Facilities Planner

State of Hawaii, Department of Education

3633 Waiialae Avenue, Admin Bldg 2nd Floor

Honolulu, Hawaii 96816

T: +1 808 784 5091

E: brenda.lowrey@k12.hi.us

STEVE TAGUPA

Project Manager

State of Hawaii, Department of

Transportation - Airports Division

400 Rogers Boulevard, Suite 700

Honolulu, Hawaii 96819

T: +1 808 838 8805

E: steve.tagupa@hawaii.gov

BRUCE TERAMOTO

Architect and Project Manager

University of Hawaii, Office of Project Delivery

400 Rogers Boulevard, Suite 700

Honolulu, Hawaii 96819

T: +1 808 956 4800

E: brucet@hawaii.edu

WORK APPROACH

QUALITY CONTROL

At RLB, we know that poor quality leads to cost and time impacts and that most quality and risk issues can be mitigated through tight project controls.

OUR APPROACH

Service that produces quality requires planning, organizational commitment, training, control, diligence, documentation, and review. To accomplish these goals, RLB has implemented formal policies and procedures:

- At the onset, we define project goals and objectives, specify quality-related activities, and assign responsibilities to verify that activities are performed and goals are realized.
- Quality is accomplished and maintained by those who are responsible for the performance of the work.
- Quality achievement is verified by personnel independent of the work.
- Quality verification will be reported to a level of management that provides sufficient authority and organizational freedom to assure that appropriate action will be taken to resolve any conditions that are adverse to a quality job. The reporting level will be at least one level higher than those providing direct responsibility for the work.

Our role in driving your desired objectives is to ensure quality is obtained by the General Contractor for the project in conformance with all contract requirements. Our approach throughout the lifecycle of the project is described below.

PRECONSTRUCTION

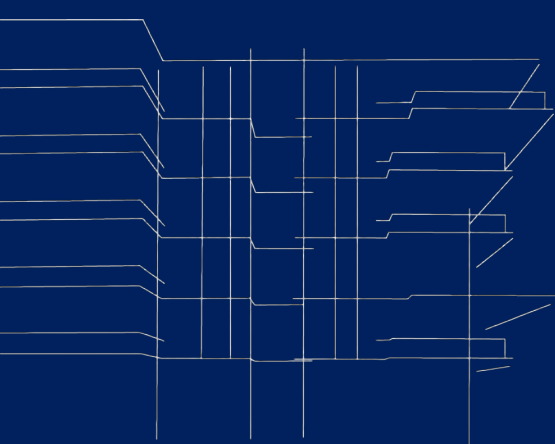
- Provide oversight and input for the quality control process of project design and specifications
- Review quality control specifications and contract language

CONSTRUCTION

- Validate contractor’s quality control plan as compared to contract
- Examine quality control methods to determine if contractor is properly controlling construction activities
- Assist the contractor in understanding and implementing the contract requirements
- Ensure necessary changes are made in the contractor’s quality control plan if excessive construction deficiencies occur
- Examine ongoing and completed work for compliance with contract requirements, including safety and control testing, until completion of the particular construction activity
- Conduct final follow-up checks ensuring all deficiencies are corrected prior to the start of additional new construction activities

CLOSEOUT

- Testing of completed systems shall be performed as required by the technical specifications of the contract
- Manage defects list process to include documented punchlists and remedial actions
- Participate in the pre-final and final inspections with contractor QC personnel
- Ensure all deficiencies noted during the pre-final inspection are corrected prior to the final inspection
- Notify contractor if corrective action is required under the terms of the contract; ensure all significant deficiencies are corrected prior to turnover
- Collate completed as-built drawings following review and completion by contractor quality control manager



WORK APPROACH

FIRM CAPACITY

RLB offers Project Management, Cost Consultancy and Advisory Services that prioritize the success of your project. Through our services, RLB effectively becomes part of your organization, managing the efforts and aspirations of all stakeholders for the overall benefit of the project. We emphasize flexibility to aid your decision-making processes while maintaining tight control.

Our team seeks workable solutions to multi-faceted problems by leading, inspiring, and integrating the efforts of the entire project team. We coordinate the activities of all parties to ensure they focus on the project's objectives and understand what is expected of them. This dynamic approach allows us to control your project from the outset, establishing a framework of controls that can be applied throughout the entire process.

RLB is well-equipped to handle the workload for any new contract we secure. Our team possesses the flexibility to scale man-hours as necessary, ensuring that staffing requirements are consistently met without compromising project timelines or quality standards. With our extensive experience in various projects, we have a deep understanding of operational intricacies and specific project needs, allowing us to streamline project execution efficiently.

Currently, we have dedicated teams committed to ongoing projects and can readily support additional projects as they arise. Moreover, we can reallocate staff to bolster resources where needed, ensuring that each project receives the attention and expertise it demands. This strategic approach to resource management, combined with our insights and familiarity with diverse project environments, positions RLB as a reliable partner capable of delivering exceptional results regardless of project complexity or concurrent commitments.





APPENDICES



STATE OF HAWAII
DEPARTMENT OF ACCOUNTING AND GENERAL SERVICES

QUESTIONNAIRE FOR ARCHITECTS, ENGINEERS AND OTHER PROFESSIONAL SERVICES

QUESTIONNAIRE FOR: (LIST DISCIPLINE)
Construction Management, Project Management

FIRM NAME Rider Levett Bucknall Ltd.	ESTABLISHED YEAR 1991	STATE Hawaii	TYPE OF ORGANIZATION Corporation	DATE 06/11/2024
HOME OFFICE ADDRESS 1001 Bishop Street, Suite 2690 Honolulu HI, 96813	AGE OF FIRM 33	FEDERAL ID NO. 411944416	YEARS ESTABLISHED IN HAWAII 33	
PERSON IN CHARGE Erin Kiriwara	PHONE 808-521-2641	FAX	EMAIL antonia.agbannawag@us.rlb.com	
BRANCH OFFICE ADDRESS 300 Onukai Road, Building B Kihei HI, 96753	PHONE 808-875-1945	FAX		
PERSON IN CHARGE Paul Belshoff	EMAIL Paul.Belshoff@us.rlb.com			

NUMBER OF PERSONNEL IN YOUR PRESENT ORGANIZATION

LOCATED AT	TECHNICAL PERSONNEL AND OTHER STAFF											TOTAL		
	PRINCIPALS & ASSOCIATES		Architect	Engineers			Draftsmen	Spec. Writer	Estimator	Inspector	Surveyor		Other Staff	
	Architect	Engineer		Others	Mech.	Electri								Civil
Home Office	0	1	0	0	0	1	0	0	0	5	0	0	33	50
Branch Office	0	0	0	0	0	0	0	0	0	0	0	0	8	9
TOTAL	0	1	0	0	0	1	0	0	0	5	0	0	41	59

LISTED PRINCIPALS, ASSOCIATES, AND TECHNICAL PERSONNEL WITH HAWAII LICENSES:	1	LISTED PRINCIPALS, ASSOCIATES, AND TECHNICAL PERSONNEL WITHOUT HAWAII LICENSES:	9
---	----------	--	----------

PERSONAL HISTORY STATEMENT OF PRINCIPALS WITHIN YOUR FIRM

NAME Cassie Idehara	RESIDENT OF Hawaii	TITLE Vice President				
MAJOR RESPONSIBILITIES						
Cassie Idehara, Vice President, offering comprehensive cost and project management services, specializing in construction costs and budget management, advising on multi-billion dollar projects in the State, Nationally and Globally.						
YEARS WITH FIRM	YEARS OF EXPERIENCE	AS PRINCIPAL IN THIS FIRM	AS PRINCIPAL IN OTHER FIRMS	OTHER THAN PRINCIPAL		
19	32	3	0	29		

EDUCATION (COLLEGE, DEGREE, YEAR, SPECIALIZATION)
 Bachelor of Building in Quantity Surveying, University of South Australia, Adelaide, Australia

MEMBERSHIP IN PROFESSIONAL ORGANIZATIONS
 Member of Royal Institute of Chartered Surveyors; Construction Management Association of America

REGISTRATION (TYPE, LICENSE NO., YEAR ISSUED, STATE)

NAME Erin Kirihara	RESIDENT OF Hawaii	TITLE Executive Vice President				
MAJOR RESPONSIBILITIES						
Erin Kirihara, Executive Vice President, leads Hawaii Region and RLB North American Board, renowned for delivering diverse projects from \$1M to \$800M on time and within budget across diverse sectors.						
YEARS WITH FIRM	YEARS OF EXPERIENCE	AS PRINCIPAL IN THIS FIRM	AS PRINCIPAL IN OTHER FIRMS	OTHER THAN PRINCIPAL		
20	20	6	0	14		

EDUCATION (COLLEGE, DEGREE, YEAR, SPECIALIZATION)
 Bachelor of Arts, Business Administration, Chaminade University

MEMBERSHIP IN PROFESSIONAL ORGANIZATIONS
 Child & Family Service Member; HUGS Member

REGISTRATION (TYPE, LICENSE NO., YEAR ISSUED, STATE)

PERSONAL HISTORY STATEMENT OF PRINCIPALS WITHIN YOUR FIRM

NAME Guia Lasquete		RESIDENT OF Hawaii	TITLE Principal			
MAJOR RESPONSIBILITIES Guia Lasquete, a seasoned Principal, leads Hawaii Island offices with nearly 30 years of expertise in quantity surveying, cost and project management, emphasizing LEED design and specializing in the hospitality sector.		YEARS WITH FIRM 13	YEARS OF EXPERIENCE 29	AS PRINCIPAL IN THIS FIRM 2	AS PRINCIPAL IN OTHER FIRMS 0	OTHER THAN PRINCIPAL 27
EDUCATION (COLLEGE, DEGREE, YEAR, SPECIALIZATION) B.S., Quantity Surveying, Construction Eco. & Mgmt; B.S, Construction Mgmt. CA Polytechnic						
MEMBERSHIP IN PROFESSIONAL ORGANIZATIONS LEED GA, Hawaii Leeward Planning Conference; Hawaii Island Chamber of Commerce						
REGISTRATION (TYPE, LICENSE NO., YEAR ISSUED, STATE)						
NAME Maelyn Uyehara		RESIDENT OF Hawaii	TITLE Principal			
MAJOR RESPONSIBILITIES Maelyn Uyehara, a Principal Cost Manager, offers strategic cost insights crucial for effective facility planning, construction, and expansion, with expertise in milestone estimating.		YEARS WITH FIRM 30	YEARS OF EXPERIENCE 31	AS PRINCIPAL IN THIS FIRM 25	AS PRINCIPAL IN OTHER FIRMS 0	OTHER THAN PRINCIPAL 6
EDUCATION (COLLEGE, DEGREE, YEAR, SPECIALIZATION) Bachelor of Science, Civil Engineering, University of Hawaii at Manoa						
MEMBERSHIP IN PROFESSIONAL ORGANIZATIONS AACE International Member						
REGISTRATION (TYPE, LICENSE NO., YEAR ISSUED, STATE)						

PRIOR EMPLOYMENT (Principals only)

(START WITH LATEST EMPLOYMENT PRIOR TO JOINING THIS FIRM AND PROVIDE SIMILAR INFORMATION FOR EACH SEPARATE EMPLOYMENT OR MAJOR CHANGES IN DUTIES WITH THE SAME EMPLOYER)

PRINCIPAL NAME Cassie Idehara		FIRM LOCATED OUTSIDE THE US Yes		DATE FROM 01/01/1996 TO 03/01/2005
FIRM Northcroft Lim Consultants Pte Ltd				
ADDRESS1 7 Maxwell Road		ADDRESS2 MND Complex Annexe B		
CITY Phoenix#05-01A	STATE -	ZIP CODE -	COUNTRY Singapore	
JOB TITLE Senior Quantity Surveyor		MAJOR DUTIES Quantity Surveying Services (Cost & Project Management)		
SUPERVISOR'S NAME James Loo		SUPERVISOR'S TITLE Managing Director		
PRINCIPAL NAME Erin Kirihara				
FIRM Rider Hunt Levett & Bailey		FIRM LOCATED OUTSIDE THE US No		DATE FROM 09/01/2004 TO 07/01/2007
ADDRESS1 1001 Bishop Street		ADDRESS2 Suite 2690		
CITY Honolulu	STATE HI	ZIP CODE 96813	COUNTRY USA	
JOB TITLE Project Engineer		MAJOR DUTIES Project management assistance		
SUPERVISOR'S NAME Paul Brussow		SUPERVISOR'S TITLE Senior Vice President		

PRIOR EMPLOYMENT (Principals only)

(START WITH LATEST EMPLOYMENT PRIOR TO JOINING THIS FIRM AND PROVIDE SIMILAR INFORMATION FOR EACH SEPARATE EMPLOYMENT OR MAJOR CHANGES IN DUTIES WITH THE SAME EMPLOYER)

PRINCIPAL NAME Guia Lasquete		FIRM Altus Page Kirkland	FIRM LOCATED OUTSIDE THE US No	DATE FROM 12/01/2009 TO 01/01/2011
ADDRESS1 330 Royal Hawaiian Ave		ADDRESS2		
CITY Honolulu	STATE HI	ZIP CODE 96815	COUNTRY USA	
JOB TITLE Senior Quantity Surveyor		MAJOR DUTIES Cost Management, Project Management, Construction Management		
SUPERVISOR'S NAME Kirk Bendler		SUPERVISOR'S TITLE Sr. Cost Manager		
PRINCIPAL NAME Maelyn Uyehara				
FIRM Kaikor Construction	FIRM LOCATED OUTSIDE THE US No		DATE FROM 01/01/1993 TO 03/31/1994	
ADDRESS1 94-1388 Moaniani Street		ADDRESS2 Suite #401		
CITY Waipahu	STATE HI	ZIP CODE 96797	COUNTRY USA	
JOB TITLE Estimating Intern		MAJOR DUTIES Cost Estimating		
SUPERVISOR'S NAME Steven Baginski		SUPERVISOR'S TITLE Estimator		

PERSONAL HISTORY STATEMENT OF ASSOCIATES WITHIN YOUR FIRM

NAME Antonia Agbannawag		RESIDENT OF Hawaii	TITLE Associate
YEARS OF EXPERIENCE 7	AS ASSOCIATE IN THIS FIRM 2	AS ASSOCIATE IN OTHER FIRMS 0	OTHER THAN ASSOCIATE 5
EDUCATION (COLLEGE, DEGREE, YEAR, SPECIALIZATION) B.A. Political Science, UH Manoa, HI; B.A. American Studies, UH Manoa, HI			
MEMBERSHIP IN PROFESSIONAL ORGANIZATIONS NAIOP Hawaii Member; Hawaii Leeward Planning Conference Member; Hawaii Economic Association Member			
REGISTRATION (TYPE, LICENSE NO., YEAR ISSUED, STATE)			
NAME Blair Banker		RESIDENT OF Hawaii	TITLE Associate
YEARS OF EXPERIENCE 50	AS ASSOCIATE IN THIS FIRM 2	AS ASSOCIATE IN OTHER FIRMS 0	OTHER THAN ASSOCIATE 48
EDUCATION (COLLEGE, DEGREE, YEAR, SPECIALIZATION) B.A., Construction Management, Wentworth Institute of Technology, Boston, MA			
MEMBERSHIP IN PROFESSIONAL ORGANIZATIONS LEED AP, Hawaii Society for Healthcare Engineering Board Member			
REGISTRATION (TYPE, LICENSE NO., YEAR ISSUED, STATE)			

PERSONAL HISTORY STATEMENT OF ASSOCIATES WITHIN YOUR FIRM

NAME Paul Belshoff		RESIDENT OF Hawaii	TITLE Associate Principal
YEARS OF EXPERIENCE 18	AS ASSOCIATE IN THIS FIRM 1	AS ASSOCIATE IN OTHER FIRMS 0	OTHER THAN ASSOCIATE 17
EDUCATION (COLLEGE, DEGREE, YEAR, SPECIALIZATION) Bachelor of Science, Civil and Environmental Engineering, University of Louisville, Louisville, KY			
MEMBERSHIP IN PROFESSIONAL ORGANIZATIONS Maui Chamber of Commerce Member; Construction Industry of Maui Board Member; Maui Economic Dev.			
REGISTRATION (TYPE, LICENSE NO., YEAR ISSUED, STATE)			
NAME Nicki Dockery		RESIDENT OF Hawaii	TITLE Associate
YEARS OF EXPERIENCE 39	AS ASSOCIATE IN THIS FIRM 1	AS ASSOCIATE IN OTHER FIRMS 0	OTHER THAN ASSOCIATE 38
EDUCATION (COLLEGE, DEGREE, YEAR, SPECIALIZATION) Diploma Carrington Technical Institute; Diploma Carrington Polytechnic			
MEMBERSHIP IN PROFESSIONAL ORGANIZATIONS New Zealand Institute of Quantity Surveyors (NZIQS)			
REGISTRATION (TYPE, LICENSE NO., YEAR ISSUED, STATE)			

PERSONAL HISTORY STATEMENT OF ASSOCIATES WITHIN YOUR FIRM

NAME Yong Shi	RESIDENT OF Hawaii	TITLE Associate
YEARS OF EXPERIENCE 13	AS ASSOCIATE IN THIS FIRM 2	AS ASSOCIATE IN OTHER FIRMS 0
		OTHER THAN ASSOCIATE 11

EDUCATION (COLLEGE, DEGREE, YEAR, SPECIALIZATION)
M.S. Civil Engineering UH Manoa; Ph.D. Chemical Physics U of Science & Tech; B.S. Physics Anhui Univ

MEMBERSHIP IN PROFESSIONAL ORGANIZATIONS
Certified Cost Professional (CCP); AACE International Member; Chinese Chamber of Commerce Member

REGISTRATION (TYPE, LICENSE NO., YEAR ISSUED, STATE)

NAME Terence Young	RESIDENT OF Hawaii	TITLE Associate Principal
YEARS OF EXPERIENCE 20	AS ASSOCIATE IN THIS FIRM 4	AS ASSOCIATE IN OTHER FIRMS 0
		OTHER THAN ASSOCIATE 16

EDUCATION (COLLEGE, DEGREE, YEAR, SPECIALIZATION)
Bachelor of Science, Civil Engineering, Purdue University, West Lafayette, IN

MEMBERSHIP IN PROFESSIONAL ORGANIZATIONS
Construction Management Association of America (CMAA), Certified Construction Manager (CCM)

REGISTRATION (TYPE, LICENSE NO., YEAR ISSUED, STATE)
Professional Engineer (Civil), PE-17839, 2017, Hawaii

INSURANCE

General liability for limit of not less than \$1,000,000 per occurrence and \$2,000,000 aggregate. The STATE shall be named as additional insured.	
General Liability Per Occurrence	\$ 1,000,000.00
General Liability Aggregate	\$ 2,000,000.00
The STATE shall be named as additional insured for General liability.	Yes
Expiration Date	09/01/2024

Automobile liability insurance for limit of not less than \$1,000,000 per accident. The STATE shall be named as additional insured.	
Automobile Liability Per Accident	\$ 1,000,000.00
The STATE shall be named as additional insured for Automobile liability.	Yes
Expiration Date	09/01/2024

Professional liability for limit of not less than \$1,000,000 per claim and \$2,000,000 annual aggregate.	
Professional Liability Per Claim	\$ 5,000,000.00
Professional Liability Aggregate	\$ 5,000,000.00
Expiration Date	09/01/2024

Workers compensation and employer's liability insurance (where required by HRS 386). Minimum limit of liability for workers compensation is the HRS 386 statutory limit. Minimum limit of employer's liability for bodily injury from each accident is \$1,000,000. Minimum limit of employer's liability for bodily injury from disease per employee is \$1,000,000. Minimum limit of employer's liability for bodily injury from disease aggregate is \$1,000,000.	
Employer's liability for bodily injury from each accident	\$ 1,000,000.00
Employer's liability for bodily injury from disease per employee	\$ 1,000,000.00
Employer's liability for bodily injury from disease aggregate	\$ 1,000,000.00
Expiration Date	09/01/2024
Check here if workers compensation and employer's liability insurance do not apply to your firm (Sole Proprietorship, etc.)	<input type="checkbox"/>

PRESENT/COMPLETED PROJECTS IN WHICH YOUR FIRM IS/WAS DESIGNATED THE PRIME CONSULTANT (BY DISCIPLINE)

(LIST PROJECTS FOR EACH DISCIPLINE BEING APPLIED FOR. LIST PROJECTS THAT REFLECT YOUR ABILITY TO PROVIDE QUALITY WORK FOR YOUR REQUESTED PROJECTS.)

DISCIPLINE Construction Management									
NAME OF LEAD DESIGNER State of Hawaii - Department of Accounting & General Services					YEAR 2024				
NAME, LOCATION, AND SHORT DESCRIPTION OF THE PROJECT DAGS Wahaiwa Civic Center									
DAGS SOLICITATION NOTICE PROJECT JOB # WHICH THIS PRESENT/COMPLETED PROJECT IS RELATED TO									
NAME OF THE OWNER State of Hawaii - Department of Accounting & General Services					PHONE		FAX		
ADDRESS 1 1151 Punchbowl Street, Room 423									
ADDRESS 2									
CITY Honolulu		STATE HI	ZIP CODE 96813	EMAIL eric.k.nishimoto@hawaii.gov					
ESTIMATED CONSTRUCTION COST (\$)		DURATION FOR DESIGN (MONTHS)		% OF DESIGN COMPLETED		% OF CONSTRUCTION COMPLETED			
48,000,000.00		0		100		17			
DISCIPLINE Construction Management									
NAME OF LEAD DESIGNER State of Hawaii - Department of Accounting & General Services					YEAR 2024				
NAME, LOCATION, AND SHORT DESCRIPTION OF THE PROJECT DAGS-DCR Hawaii Community Correctional Center New Medium Security Housing									
DAGS SOLICITATION NOTICE PROJECT JOB # WHICH THIS PRESENT/COMPLETED PROJECT IS RELATED TO									
NAME OF THE OWNER State of Hawaii - Department of Accounting & General Services					PHONE		FAX		
ADDRESS 1 1151 Punchbowl Street, Room 423									
ADDRESS 2									
CITY Honolulu		STATE HI	ZIP CODE 96813	EMAIL daniel.jandoc@hawaii.gov					
ESTIMATED CONSTRUCTION COST (\$)		DURATION FOR DESIGN (MONTHS)		% OF DESIGN COMPLETED		% OF CONSTRUCTION COMPLETED			
20,000,000.00		0		100		95			

PRESENT/COMPLETED PROJECTS IN WHICH YOUR FIRM IS/WAS DESIGNATED THE PRIME CONSULTANT (BY DISCIPLINE)

(LIST PROJECTS FOR EACH DISCIPLINE BEING APPLIED FOR. LIST PROJECTS THAT REFLECT YOUR ABILITY TO PROVIDE QUALITY WORK FOR YOUR REQUESTED PROJECTS.)

DISCIPLINE Construction Management									
NAME OF LEAD DESIGNER State of Hawaii - Department of Education					YEAR 2024				
NAME, LOCATION, AND SHORT DESCRIPTION OF THE PROJECT DOE Mokapu Elementary School Campus Improvements									
DAGS SOLICITATION NOTICE PROJECT JOB # WHICH THIS PRESENT/COMPLETED PROJECT IS RELATED TO									
NAME OF THE OWNER State of Hawaii - Department of Education					PHONE		FAX		
ADDRESS 1 1390 Miller Street									
ADDRESS 2									
CITY Honolulu		STATE HI	ZIP CODE 96813		EMAIL edward.ige@k12.hi.us				
ESTIMATED CONSTRUCTION COST (\$) 120,000,000.00		DURATION FOR DESIGN (MONTHS) 0		% OF DESIGN COMPLETED 100		% OF CONSTRUCTION COMPLETED 25			
DISCIPLINE Construction Management									
NAME OF LEAD DESIGNER HDR					YEAR 2024				
NAME, LOCATION, AND SHORT DESCRIPTION OF THE PROJECT DOT-A Daniel K. Inouye Int'l Airport Restroom Improvements Ph 2, Restroom Renovations									
DAGS SOLICITATION NOTICE PROJECT JOB # WHICH THIS PRESENT/COMPLETED PROJECT IS RELATED TO									
NAME OF THE OWNER State of Hawaii - Department of Transportation, Airports Division					PHONE +1 808 838 8704		FAX		
ADDRESS 1 400 Rodgers Blvd. Suite 700									
ADDRESS 2									
CITY		STATE HI	ZIP CODE		EMAIL lyle.oda@hawaii.gov				
ESTIMATED CONSTRUCTION COST (\$) 22,000,000.00		DURATION FOR DESIGN (MONTHS) 0		% OF DESIGN COMPLETED 100		% OF CONSTRUCTION COMPLETED 100			

PRESENT/COMPLETED PROJECTS IN WHICH YOUR FIRM IS/WAS DESIGNATED THE PRIME CONSULTANT (BY DISCIPLINE)

(LIST PROJECTS FOR EACH DISCIPLINE BEING APPLIED FOR. LIST PROJECTS THAT REFLECT YOUR ABILITY TO PROVIDE QUALITY WORK FOR YOUR REQUESTED PROJECTS.)

DISCIPLINE Construction Management										YEAR 2021	
NAME OF LEAD DESIGNER G70											
NAME, LOCATION, AND SHORT DESCRIPTION OF THE PROJECT DAGS Hawaii State Hospital New Patient Facility, Construction of New 144-bed patient facility										DAGS SOLICITATION NOTICE PROJECT JOB # WHICH THIS PRESENT/COMPLETED PROJECT IS RELATED TO	
NAME OF THE OWNER State of Hawaii, Department of Accounting & General Services										PHONE +1 808 586 0460	
ADDRESS 1 1151 Punchbowl Street										FAX	
CITY Honolulu			STATE HI		ZIP CODE 96813		EMAIL eric.k.nishimoto@hawaii.gov				
ESTIMATED CONSTRUCTION COST (\$) 140,000,000.00				DURATION FOR DESIGN (MONTHS) 0		% OF DESIGN COMPLETED 100		% OF CONSTRUCTION COMPLETED 100			
DISCIPLINE Construction Management										YEAR 2021	
NAME OF LEAD DESIGNER AHL											
NAME, LOCATION, AND SHORT DESCRIPTION OF THE PROJECT DAGS Keahuolu Courthouse Kona Judiciary Complex, Construction of new 140,000SF Facility										DAGS SOLICITATION NOTICE PROJECT JOB # WHICH THIS PRESENT/COMPLETED PROJECT IS RELATED TO	
NAME OF THE OWNER State of Hawaii, Department of Accounting and General Services										PHONE +1 808 586 0526	
ADDRESS 1 1151 Punchbowl Street										FAX	
CITY Honolulu			STATE HI		ZIP CODE 96813		EMAIL daniel.jandoc@hawaii.gov				
ESTIMATED CONSTRUCTION COST (\$) 98,500,000.00				DURATION FOR DESIGN (MONTHS) 0		% OF DESIGN COMPLETED 100		% OF CONSTRUCTION COMPLETED 100			

PRESENT/COMPLETED PROJECTS IN WHICH YOUR FIRM IS/WAS DESIGNATED THE PRIME CONSULTANT (BY DISCIPLINE)

(LIST PROJECTS FOR EACH DISCIPLINE BEING APPLIED FOR. LIST PROJECTS THAT REFLECT YOUR ABILITY TO PROVIDE QUALITY WORK FOR YOUR REQUESTED PROJECTS.)

DISCIPLINE Construction Management									
NAME OF LEAD DESIGNER Mitsunaga & Associates, Inc.					YEAR 2021				
NAME, LOCATION, AND SHORT DESCRIPTION OF THE PROJECT DOE Solomon Elementary School, Demolition & Construction of Complete ~400,000SF campus									
DAGS SOLICITATION NOTICE PROJECT JOB # WHICH THIS PRESENT/COMPLETED PROJECT IS RELATED TO									
NAME OF THE OWNER State of Hawaii, Department of Education					PHONE +1 808 377 8312		FAX		
ADDRESS 1 P.O. Box 2360					ADDRESS 2 Honolulu				
CITY Honolulu		STATE HI	ZIP CODE 96804		EMAIL Brenda_Lowrey@notes.k12.hi.us				
ESTIMATED CONSTRUCTION COST (\$) 80,000,000.00		DURATION FOR DESIGN (MONTHS) 0		% OF DESIGN COMPLETED 100		% OF CONSTRUCTION COMPLETED 100			
DISCIPLINE Construction Management									
NAME OF LEAD DESIGNER Various					YEAR 2021				
NAME, LOCATION, AND SHORT DESCRIPTION OF THE PROJECT DOT-A CM Services for Various Statewide Special Maintenance Building Projects									
DAGS SOLICITATION NOTICE PROJECT JOB # WHICH THIS PRESENT/COMPLETED PROJECT IS RELATED TO									
NAME OF THE OWNER State of Hawaii, Department of Transportation, Airports Division					PHONE +1 808 838 8704		FAX		
ADDRESS 1 400 Rodgers Blvd., Suite 700					ADDRESS 2				
CITY Honolulu		STATE HI	ZIP CODE 96819		EMAIL lyle.oda@hawaii.gov				
ESTIMATED CONSTRUCTION COST (\$) 0.00		DURATION FOR DESIGN (MONTHS) 0		% OF DESIGN COMPLETED 100		% OF CONSTRUCTION COMPLETED 100			

PRESENT/COMPLETED PROJECTS IN WHICH YOUR FIRM IS/WAS DESIGNATED THE PRIME CONSULTANT (BY DISCIPLINE)

(LIST PROJECTS FOR EACH DISCIPLINE BEING APPLIED FOR. LIST PROJECTS THAT REFLECT YOUR ABILITY TO PROVIDE QUALITY WORK FOR YOUR REQUESTED PROJECTS.)

DISCIPLINE Construction Management										YEAR 2021	
NAME OF LEAD DESIGNER HDR, Inc.											
NAME, LOCATION, AND SHORT DESCRIPTION OF THE PROJECT DOT-A Daniel K. Inouye Int'l Airport Restroom Improvements Ph 1, Restroom Renovations										DAGS SOLICITATION NOTICE PROJECT JOB # WHICH THIS PRESENT/COMPLETED PROJECT IS RELATED TO	
NAME OF THE OWNER State of Hawaii, Department of Transportation Airports Division										PHONE +1 808 838 8704	FAX
ADDRESS 1 400 Rodgers Blvd. Suite 700										ADDRESS 2	
CITY Honolulu	STATE HI	ZIP CODE 96819	EMAIL lyle.oda@hawaii.gov		% OF DESIGN COMPLETED 100		% OF CONSTRUCTION COMPLETED 100				
ESTIMATED CONSTRUCTION COST (\$) 25,000,000.00		DURATION FOR DESIGN (MONTHS) 0		DURATION FOR DESIGN (MONTHS) 100							
DISCIPLINE											
NAME OF LEAD DESIGNER										YEAR	
NAME, LOCATION, AND SHORT DESCRIPTION OF THE PROJECT										DAGS SOLICITATION NOTICE PROJECT JOB # WHICH THIS PRESENT/COMPLETED PROJECT IS RELATED TO	
NAME OF THE OWNER										PHONE	FAX
ADDRESS 1										ADDRESS 2	
CITY	STATE	ZIP CODE	EMAIL		% OF DESIGN COMPLETED		% OF CONSTRUCTION COMPLETED				
ESTIMATED CONSTRUCTION COST (\$)		DURATION FOR DESIGN (MONTHS)		DURATION FOR DESIGN (MONTHS)							

STATEMENTS

<p>Does your firm have any conflicts of interest in performing services for DAGS and/or the State of Hawaii? For example, do any key personnel have any membership on State boards, commissions, etc.?</p>	<p>No</p>
<p>If yes, list membership on State boards, commissions, etc. for all key personnel.</p>	
<p>Does your firm have any objections to retaining specialty subconsultants (i.e., environmental, geotechnical, etc.) under prime contract?</p>	<p>No</p>
<p>Will your firm and subconsultants be willing to do the work under the City and County of Honolulu Express State Permits (ESP) process for the island of Oahu?</p>	<p>Yes</p>

STATE OF HAWAII

DEPARTMENT OF COMMERCE AND CONSUMER AFFAIRS



PROFESSIONAL ENGINEER

This is to Certify that

TERENCE P K Y YOUNG
was duly licensed as a

PROFESSIONAL ENGINEER

In the State of Hawaii.

and is therefore authorized to practice this Profession within the State of Hawaii. In witness whereof, this License has been issued and the Seal of the Board affixed hereto, this 14th Day of December, A.D 2017

No. 17839

Chairperson

EXPIRATION DATE: 4/30/2026

CONTACT US

ERIN KIRIHARA
EXECUTIVE VICE PRESIDENT

Hawaii Region | Honolulu
T: +1 808 391 4500
E: erin.kirihara@us.rlb.com

GUIA LASQUETE
PRINCIPAL

Hawaii Island
T: +1 808 754 3447
E: guia.lasquete@us.rlb.com

PAUL BELSHOFF
ASSOCIATE PRINCIPAL

Maui
T: +1 808 371 9572
E: paul.belshoff@us.rlb.com

RLB.com

AFRICA | AMERICAS | ASIA | EUROPE | MIDDLE EAST | OCEANIA

