



Professional Services Request for Qualifications

Community Planning Services
Fiscal Year 2025-2026

Prepared for the County of Hawai'i
Office of Housing and Community Development
July, 2025

Letter of Interest

Ms. Kehaulani M. Costa, Administrator
Housing and Community Development, County of Hawai'i
1990 Kino'ole Street, Suite 102
Hilo, Hawai'i 96720
808-961-8379

ohcdprofserv@hawaiiicounty.gov

OH.1 | COMMUNITY PLANNING (COMMUNITY ENGAGEMENT AND STRATEGIC PLANNING)

Thank you for allowing Geyer Coburn Hutchins (GCH) to submit our professional landscape architectural service qualifications for the 2025-2026 Fiscal Year.

As a general introduction to our firm, GCH is a award-winning landscape architecture and planning office who originated in Honolulu before relocating our offices to Seattle, Washington. We strive to create places that are socially equitable, embrace the complex challenges that our contemporary built environment requires, provide lasting value to our clients and the community, and thoughtfully incorporate stakeholder concerns and aspirations into the final solution.

As a small business we rely on our relationships and reputation for work, so we aim to be consistent, responsive, and communicative to all our clients. We also have an ability to be agile and quickly respond to our client's needs, moving staff and adjusting workflows to suit the specific circumstances of clients' and projects' ever changing needs.

We have collaborated with communities, municipalities, engineers, artists, architects, developers, and individuals to create places that serve and elevate the stakeholder's goals. No matter the client, GCH always strives to ensure creative, constructible, and on-budget solutions to unique, complex, and varied design challenges.

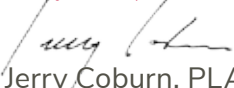
It our belief that the no matter the particulars of the project you may present to us, the following elements will likely be a focus to its success:

- **Equitable use:** A public space is a real opportunity to be welcoming and should be designed in a way that makes everyone feel comfortable.
- **Flexibility in use:** It is critical that open space in a public setting be able to accommodate a number of different activities to maximize its use.
- **Safety and Environment:** This is a pressing concern for any public space. We prefer to use CPTED principals to creating a site that is open, welcoming, and also safe.

If you have any questions related to the content of this SOQ please do not hesitate to reach out. I would be honored to discuss our work, design philosophy, and approach further with you.

Respectfully Submitted,

GCH
Planning & Landscape Architecture


Jerry Coburn, PLA, ASLA
Principal
Geyer Coburn Hutchins LLC

Executive Summary

Geyer Coburn Hutchins (GCH) is a planning and landscape architecture firm, originally founded as a Hawaiian corporation. The founding partners met and worked together at Belt Collins in Honolulu from the late 1980s until 1997, when they relocated to Seattle, Washington; ultimately acquiring their division and formally rebranding as GCH. Our portfolio encompasses a diverse range of projects, including recreation, open space, hospitality, urban design, and community planning.

Having its origins in Hawaii, GCH possesses an in-depth understanding of the distinct characteristics of the Hawaiian Islands, including their unique climates, industries, and culture. Our team also worked closely with various industry professionals and institutional organizations in the testing and trials to establish which hardy and native plant materials are most appropriate for use throughout the islands.

For over two decades, GCH has provided innovative, environmentally sensitive, and iconic design solutions in more than forty countries worldwide. Our firm's approach is informed by a deep respect for each project's individual context, with particular attention to the unique challenges and attributes of the site. GCH's commitment to excellence extends from the early project analysis, through established design phases, and ultimately through the construction observation process, ensuring the delivery of high-quality projects that align with our client's aspirations.

GCH adheres to a holistic approach throughout all phases of planning and landscape design. This approach involves a meticulous analysis of both short and long-term goals; integrating the physical, environmental, social, cultural, and economic elements crucial for a project's success. We are unwavering in our commitment to delivering designs that integrate creativity, sustainability, and practicality; always prioritizing environmentally responsible solutions that are both innovative and feasible.

At the core of GCH's process is comprehensive site analysis and robust collaboration with our clients and the larger design team. It is only through the alignment of site-specific characteristics, various stake-holder perspectives, and the client's objectives and capabilities, that we are able to derive the most fitting and enduring design solutions. We also maintain a hands-on approach throughout project construction, ensuring that the principles and vision of the design are meticulously executed into the final built environment.

Ultimately, GCH measures its success not only by the completion of its projects, but by the satisfaction and trust of its clients. We strive for excellence in every aspect of our work, consistently exceeding expectations and delivering impactful spaces that stand the test of time.

Firm Contact Information

Geyer Coburn Hutchins LLC
6101 22nd Avenue Northwest
Seattle, Washington 98107

Contact:

Jerry Coburn
(206) 285 4422
gch@gchsite.com

Firm Profile Information

Year Founded: 1997

Years in Business: 28

Office Locations: 1, Seattle

Employee Count: < 10

Major Contracts - 2024

QUIL CEDA VILLAGE

Tulalip, Washington
Resort Expansion and Community
Village Master Plan
338 acres

MC GATEWAY COMMUNITY

Walla Walla, Washington
Community Master Plan
357 acres

SOUL RESORT COMMUNITY

El Dabaa, Egypt
Resort Community Master Plan
517 acres

OKANAGAN ESTATES

Okanagan, Washington
Community Master Plan
230 acres

Project References

PARK AT PARK STREET

City of Chelan - Parks & Recreation
Paul Horne - (509) 682 8015

Scope: Landscape Architecture

Project Features: Municipal park, shoreline setting, universally accessible site, community focused



TEHALEH

Brookfield Development
Tammy Braun - (253) 275 3361

Scope: Community Planning, Landscape Architecture

Project Features: Universally accessible site, play areas, public involvement, community focused, multiple uses



THE LOOKOUT

Chelan Lookout
Ted Schroth - (509) 682 0885

Scope: Community Planning, Landscape Architecture

Project Features: Open play, universally accessible site, community focused, multiple uses



LAKEPOINTE URBAN VILLAGE

Brookfield Development
Marita Benedict - (253) 275 3357

Scope: Design Guidelines, Landscape Architecture

Project Features: Community focused, universally accessible site



ROCKY POND RESORT

Rocky Pond Hospitality Ventures LLC
David Dufenhorst - (206) 458 9119

Scope: Community Planning, Landscape Architecture

Project Features: Shoreline setting, community focused, universally accessible, play areas, multi-use areas



HIGHLAND FARMS

Selland Construction
Charley Underwood - (509) 662 7119

Scope: Community Planning, Landscape Architecture

Project Features: Community focused, play areas, multi-use areas



Project Approach and Methodology

The following is a standard approach to GCH projects:

COORDINATION AND COLLABORATION

Collaboration is at the heart of GCH's design practice and reflects our commitment to ensuring all stakeholders, including the owner, extended consultant team, and other professionals or governing agencies the owner deems appropriate, are involved throughout the design process. We believe a thoughtful and methodical process involving this extended group ensures that all options and possibilities for design solutions are fully vetted. This process allows for the best solutions, given the unique circumstances of every project, to rise to the top.

Coordination and open communication among each professional discipline, the County of Hawai'i, and additional stakeholders or representatives identified, will be crucial for the success of the project. The scheduling and implementation of various services, the exploration of program elements, the visioning of the site, and the prioritization of the needs of the community will be required of all of us involved.

All of our team members understand that without this crucial element to the design process, the project cannot succeed.

ANALYSIS

The first step for our team would be to conduct a site analysis of existing conditions both on and off site, and review all existing documents and reports to better understand site opportunities and constraints. As part of the analysis we would also look at adjacent properties and their connections to the site. The analysis information would be documented graphically for review with stakeholders.

The creation of a site survey will be crucial for this stage and the resulting drawings will be paramount to the creation of the design going forward.

The goal of the analysis is to understand the site; its constraints, assets, and potentials. It will also give the design team an insight into the prior approaches to the site that have failed.

MASTER PLANNING PROCESS

In the Master Planning process, GCH's planning team exhaustively considers all potential options for the property through a series of interactive meetings with the owner and their extended team. All relevant planning and budgetary criteria are considered through this process, always seeking to find the highest value and optimal utilization of a property given this information. Multiple submittals are typically presented until the owner selects a preferred option.



Project Approach and Methodology

Once the preferred option is selected GCH develops this option to the desired degree of detail that the Owner requires for the specifics of each project.

LANDSCAPE ARCHITECT PROCESS

In the Landscape Architectural process our team goes through a methodical process of discovery, development, and implementation to ensure the highest quality project is realized. All relevant physical, environmental, governmental, market driven, and budget elements are creatively and technically considered through the design process. Typically GCH's design stages are as follows depending on the owner's requirements for each project:

- Conceptual Design: Flushing out of initial goals and establishing a vision for the project.
- Schematic Design: Elaboration and further detailing of the project's goals and vision.
- Design Development: Further detailing of approved project direction.
- Construction Documentation: Final detailing of project for construction.
- Services During Construction: Assisting the owner with matters related to the landscape bidding and construction.

QUALITY ASSURANCE AND CONTROL

While ISO Certification for Quality Assurance is not typical as a disciplinary practice in our region, GCH places major emphasis on our in-house Quality Assurance/Quality Control (QA/QC) program that adheres to the highest standards of landscape discipline protocols. The objective of our internal quality control review process is to identify conflicts, to ask questions, and to raise issues regarding design features that have the potential to present a future problem.

It is the policy of GCH that no professional design document for a project shall be distributed until its contents have been reviewed and approved in accordance with our QA/QC processes. All GCH project managers and staff work together to ensure that the adequacy, suitability, and quality of our work meets or exceeds the highest level of industry standards.



Key Staff

Jerry Coburn, PLA, ASLA **Role:** Principal **Experience:** 37 years / GS-9

Jerry has worked with many municipalities and private developers across the US to landscape architecture projects for thriving communities. These notably include the Park at Park Street for the City of Chelan, turning a small lakefront area into a charming street-end park with community amenities and improved water access; and Discovery Park at Tehaleh for Brookfield Properties, a 20 acre STEAM focused community park which was awarded the 2023 Award of Excellence by the Washington chapter of the American Society of Landscape Architects.



Murray Hutchins **Role:** Principal **Experience:** 35 years / GS-9

Murray has extensive experience creating unique and successful communities and community centers throughout the world, from small 10-acre mixed-income neighborhoods to large 4,000-acre towns. A recent notable project of Murray's includes the planning of a 260 acre reclaimed waterfront hazardous site in DuPont to create an urban village that compliments the city's existing character.



Boo Y. Jang, PLA **Role:** Principal **Experience:** 18 years / GS-9

Boo has successfully led a variety of project types from the early design phases through to construction. Recent project include the creation of new community amenities for Rocky Pond Resort, including new parks, street fronts, and a community pool for the lakefront development; and working with a local Seattle shipyard owner on a revisioning of their dock facilities into a rejuvenation hub for maritime visitors and a new gateway jewel for the community.



Robey Willis **Role:** Project Manager **Experience:** 21 years / GS-7

Robey has worked on destination, recreation, and mixed-use community planning projects throughout the US and the world. He has overseen large scale regional planning studies ranging from a few hundred acres to several hundred square miles, as well as the landscape design of many exclusive hotels, resorts, and residential communities. Recently Robey has been working with a major MENA area developer on the master planning of several destination resort communities in the Persian Gulf, Red Sea, and Mediterranean Sea.





Murray Hutchins

Principal

35 years experience / GS-9

Murray Hutchins is a partner with GCH and has worked in the mixed use, residential community and resort planning field for over thirty years with projects throughout North America and the world. He is formally educated in land planning, architecture and landscape architecture, combining these complementary skills with a comprehensive approach to planning and problem solving. Murray has also lead charettes focusing on sustainability and eco-tourism as well as integration of communities within environmentally and culturally sensitive areas.

experience

Geyer Coburn Hutchins, Seattle, Washington
Principal

LMN Architects, Seattle, Washington
Design Consultant

EDAW Inc, Seattle, Washington
Design Consultant

Belt Collins, Honolulu, Hawaii
Planner

Ecosign Mountain Resort Planners, Whistler, Canada
Planner

education

University of Washington
Master of Architecture

University of Guelph
Graduate Studies in Planning

University of Guelph
Bachelor of Landscape Architecture

selected projects

Semiahmoo Spit

Blaine, Washington

GCH was involved in the reimagining and integration of the existing Semiahmoo Spit and the Inn at Semiahmoo into a residential and retail village. This rare piece of land contains approx. 3,000 linear feet of prime waterfront property and potential links to the city of Blaine directly across the water.

Soul Resort Community

El Dabaa, Egypt

GCH has been working on Egypt's idyllic North Coast of the Mediterranean Sea providing master planning for the extraordinary, "Soul" destination. Working alongside the Emaar Misr/Eagle Hills team, the group has envisioned a destination of unsurpassed elegance, innovation and sustainability throughout the region. The EcoLuxe destination includes more than 20 kilometers of water frontage and 1.5 kilometers of sandy coastline.

MC Gateway Community

Walla Walla, Washington

This community program includes single family and town homes, resort hotel with amenities, and a commercial zone including winery, event spaces, and retail. The community will be integrated with 145 acres of public open space, including parks, nature preserve, vineyards, recreation, amenities, and trails.

Bellingham Sculpture Garden

Bellingham, Washington

GCH has been the planner and landscape architect for a private sculpture park and retreat. The project includes varies art-walks and nature trails, art installations, 3,000 sf studio, chefs' kitchen and garden, wildflower nursery and events cabin. The ongoing landscape design also includes creation and restoration of river, forest and meadow habitats.



Robey Willis

Project Manager

21 years experience / GS-7

Robey Willis is a project manager at Geyer Coburn Hutchins with wide experience working on projects throughout the world. His collaborative approach to all aspects of design and management ensures success in a range of projects including urban design, neighborhood planning, recreational and commercial projects. With every design he strives to develop site specific design solutions that emphasize the uniqueness of each project.

experience

Geyer Coburn Hutchins, Seattle, Washington
Project Manager

R. M. Towill Corporation, Honolulu, Hawaii
Landscape Architect

education

University of Washington
Bachelor of Landscape Architecture

selected projects

Old Fort Lake Mixed-use Community

DuPont, Washington

This comprehensive planning project involving the analysis and design of a 260 acre piece of land in the city of DuPont. The project owner is currently working with the Department of Ecology and Attorney General to cleanup and reclaim the hazardous site that surrounds Old Fort Lake, much of The Home Course golf course, and abuts Nisqually tribal lands.

Tehaleh

Pierce County, Washington

This comprehensive planning process involved integration of all aspects for a new community from the ground up, including 9,000 residential units, business parks, schools, neighborhood retail and civic centers, parks and trail systems, transportation, etc.

Chambers Bay Community

Steilacoom, Washington

The Chambers Bay Community development plan is based on a diverse and complimentary mix of uses. The intent is to create a place with a broad blend of residents and visitors to activate the public places through various times of the day and year. Materials, style and facade treatment are intended to be unifying factors in knitting the collective identity together. Strong connections to the site's heritage, hillside, forests, stream and Chambers Bay are expressed in the site planning and design.

Chelan Bay Community

Chelan, Washington

GCH developed a master plan and subsequent landscape architectural design for Chelan Bay. The project includes 12 exclusive waterfront properties on Lake Chelan, a commercial area, and a public park. Community amenities include water access, docks, public beach, and a linear public park.



Jerry Coburn

PLA, ASLA

Principal

37 years experience / GS-9

Jerry Coburn is a founding partner of GCH and has helped to shape the vision of the firm since its inception. With over three decades of planning and landscape architectural experience, Jerry has been fortunate enough to work on a large variety of project types from large scale master planning to detailed landscape architectural design. Jerry has also been involved with the long range visioning and design for community and recreational developments adjacent to coastal and environmentally sensitive areas.

experience

Geyer Coburn Hutchins, Seattle, Washington
Principal

Belt Collins, Honolulu, Hawaii
Project Landscape Architect

Oy M&SF Design Partnership, Taipei, Taiwan
Project Landscape Architect

Maisema ja Suunnittelu, Helsinki, Finland
Design Landscape Architect

education

Harvard Graduate School of Design
Master of Design

California Polytechnic State University
Bachelor of Science in Landscape Architecture

licenses and registrations

Professional Landscape Architect - Licensed in Hawaii, Washington, Oregon, and Colorado

Member - American Society of Landscape Architects

selected projects

Kohala Ranch Residence

Kamuela, Hawai'i

GCH worked with the property owner and architect on the landscape design surrounding an addition to the existing home. The project involved the transition from an existing tennis court into a pickle ball court with new surrounding landscape, new site lighting, and new landscape plantings for the areas of disturbance.

Park at Park Street

Chelan, Washington

The Park at Park Street proposed a redevelopment of a City-owned right-of-way adjacent to the lake, and turning it into a charming public park. The project involves the removal of the existing asphalt and curbs at the high water mark and creating a beach front style shoreline instead, as well as installation of native plants and new site amenities.

Discovery Park at Tehaleh

Pierce County, Washington

Discovery Park is a 19 acre open space located in the central portion of the Tehaleh Phase 1 community. The park design includes a comprehensive list of amenities that were gathered through community engagement efforts and serves as the primary stormwater facility for the Tehaleh community. *Discovery Park* was awarded the 2023 Award of Excellence by the WASLA.

Chambers Bay

University Place, Washington

The Chambers Bay Golf Course, Soundview Trail, Central Meadow Park and North Meadow Park sit on two miles of uninterrupted Puget Sound shoreline. Immense concrete mining relics are strategically incorporated into the design creating an exciting contrast between the soft green of the turf and the rough grey of the industrial structures.



Boo Y. Jang

PLA

Principal

17 years experience / / GS-9

Boo Y. Jang is a principal at GCH with wide experience working on projects throughout the western US and the world. Her collaborative approach to all aspects of design and management ensures success in a range of projects, including multi-family and mixed-use housing, corporate office parks, public plazas and recreational and resort planning. Boo's attention to site specific issues ensures thorough and unique design solutions for each project on which she works.

experience

Geyer Coburn Hutchins, Seattle, Washington
Principal

Rhodeswork Design Studio, Seattle, Washington
Landscape Consultant

Bennett Design Group, Long Beach, California
Senior Associate/Project Manager

education

University of Washington
Master of Landscape Architecture

Otis College of Art and Design
Bachelor of Fine Arts in Architecture, Landscape and Interiors

licenses and registrations

Professional Landscape Architect - Licensed in Washington, pursuing in California

selected projects

Private Residence

Maui, Hawai'i

GCH worked with the new owners of a private hillside home in Maui to refresh the property. The new design maximizes the property views, enlarges the home's existing lanai, refreshes the plant palette, and creates multiple areas for secluded relaxation. The design also includes new access pathways, outdoor kitchen and dining area, and new sports courts.

The Lookout at Lake Chelan

Chelan, Washington

Located on the southern shore of Lake Chelan, "The Lookout" development provides breathtaking views of the adjacent clear blue water and sandy beaches. The goal of this mixed-use residential project is to create a unique environment that fosters a strong sense of community.

Rocky Pond

Orondo, Washington

Rocky Pond Resort is located in Eastern Washington along the Columbia River. GCH has assisted with the overall master plan for the entire property and the landscape design for exterior amenities. The Upper Pool is sited to take advantage of territorial views on the property. The pool facility includes private cabanas, chaise lounge seating, fire pits, a spa, outdoor showers and a bocce court.

Crescent Ridge Resort

Grant County, Washington

GCH worked on the development of several new communities for Crescent Ridge Resort, including the recently available The Ranch, The View, and The Vineyards. New resort amenities include pools, pickleball courts, parks, open spaces, a community center, vineyards, a wine bar, trails, and an outdoor music venue.



Professional Services Request for Qualifications

Community Planning Services
Fiscal Year 2025-2026

Appendix A - DPW 120

STATE OF HAWAII
DEPARTMENT OF ACCOUNTING AND GENERAL SERVICES

QUESTIONNAIRE FOR ARCHITECTS, ENGINEERS AND OTHER PROFESSIONAL SERVICES

QUESTIONNAIRE FOR: (LIST DISCIPLINE) OH.1 - COMMUNITY PLANNING	OTHER QUESTIONNAIRES SUBMITTED: (LIST DISCIPLINES) PL.4 - COMMUNITY PLANNING PW.8 - LANDSCAPE ARCHITECTURE PW.8 - LANDSCAPE ARCHITECTURE - GOLF LANDSCAPE DESIGN	DATE 07/2025									
FIRM NAME GEYER COBURN HUTCHINS LLC	<table style="width: 100%; border-collapse: collapse;"> <tr> <td style="text-align: center;">ESTABLISHED</td> <td colspan="2">TYPE OF ORGANIZATION (Underline)</td> </tr> <tr> <td style="text-align: center;">YEAR STATE</td> <td colspan="2"></td> </tr> <tr> <td style="text-align: center;">1997 HI</td> <td style="text-align: center;"> INDIVIDUAL PARTNERSHIP CORPORATION JOINT VENTURE OTHER </td> <td></td> </tr> </table>	ESTABLISHED	TYPE OF ORGANIZATION (Underline)		YEAR STATE			1997 HI	INDIVIDUAL PARTNERSHIP CORPORATION JOINT VENTURE OTHER		
ESTABLISHED	TYPE OF ORGANIZATION (Underline)										
YEAR STATE											
1997 HI	INDIVIDUAL PARTNERSHIP CORPORATION JOINT VENTURE OTHER										
BUSINESS ADDRESS, TELEPHONE & FAX NO. OF HAWAII OFFICE	AGE OF FIRM 28	FEDERAL ID NO. 99-0347964									
PRINCIPALS OF FIRM: (NAMES) JERRY COBURN MURRAY HUTCHINS	ASSOCIATE MEMBERS OF FIRM: (NAMES) BOO Y. JANG										
PRESENT BRANCH OFFICE(s): (ADDRESS, TELEPHONE & FAX NO.) 6101 22ND AVE NW SEATTLE, WA 98107 (206) 285 4422	PERSON IN CHARGE: (NAMES) JERRY COBURN										

NUMBER OF PERSONNEL IN YOUR PRESENT ORGANIZATION

LOCATED AT	PRINCIPALS & KEY PERSONNEL			OTHER PERSONNEL										TOTAL	
	Architect	Engineer	Others	Architect	Engineers				Draftsmen	Spec. Writer	Estimator	Inspector	Surveyor		Balance
					Mech.	Electri	Civil	Others							
HOME OFFICE	2		1	1										4	8
BRANCH IN															
TOTAL	2		1	1										4	8
TECHNICAL PERSONNEL:				NUMBER OF PERSONNEL WITH HAWAII LICENSES					1	NUMBER OF PERSONNEL WITHOUT HAWAII LICENSES					7

PERSONAL HISTORY STATEMENT OF PRINCIPALS AND ASSOCIATES WITHIN YOUR FIRM							
NAME JERRY COBURN			RESIDENT OF WASHINGTON		NAME MURRAY HUTCHINS		RESIDENT WASHINGTON
TITLE FOUNDING PRINCIPAL				TITLE FOUNDING PRINCIPAL			
YEARS OF EXPERIENCE 37	AS PRINCIPAL IN THIS FIRM 28	AS PRINCIPAL IN OTHER FIRMS 0	OTHER THAN PRINCIPAL 11	YEARS OF EXPERIENCE 35	AS PRINCIPAL IN THIS FIRM 28	AS PRINCIPAL IN OTHER FIRMS 0	OTHER THAN PRINCIPAL 7
EDUCATION (COLLEGE, DEGREE, YEAR, SPECIALIZATION) HARVARD GRADUATE SCHOOL OF DESIGN, MASTER OF DESIGN, 1998, LANDSCAPE ARCHITECTURE				EDUCATION (COLLEGE, DEGREE, YEAR, SPECIALIZATION) UNIVERSITY OF WASHINGTON, MASTER OF SCIENCE 1997, ARCHITECTURE			
MEMBERSHIP IN PROFESSIONAL ORGANIZATIONS AMERICAN SOCIETY OF LANDSCAPE ARCHITECTS				MEMBERSHIP IN PROFESSIONAL ORGANIZATIONS			
REGISTRATION (TYPE, YEAR, STATE) PLA, 2002, HI PLA, 2002, WA PLA, 2019, OR PLA, 2022, CO				REGISTRATION (TYPE, YEAR, STATE)			
NAME BOO Y. JANG			RESIDENT OF WASHINGTON		NAME		RESIDENT OF
TITLE PRINCIPAL				TITLE			
YEARS OF EXPERIENCE 17	AS PRINCIPAL IN THIS FIRM 4	AS PRINCIPAL IN OTHER FIRMS 0	OTHER THAN PRINCIPAL 13	YEARS OF EXPERIENCE	AS PRINCIPAL IN THIS FIRM	AS PRINCIPAL IN OTHER FIRMS	OTHER THAN PRINCIPAL
EDUCATION (COLLEGE, DEGREE, YEAR, SPECIALIZATION) UNIVERSITY OF WASHINGTON, MASTER OF SCIENCE 2018, LANDSCAPE ARCHITECTURE				EDUCATION (COLLEGE, DEGREE, YEAR, SPECIALIZATION)			
MEMBERSHIP IN PROFESSIONAL ORGANIZATIONS				MEMBERSHIP IN PROFESSIONAL ORGANIZATIONS			
REGISTRATION (TYPE, YEAR, STATE) PLA, 2023, WA				REGISTRATION (TYPE, YEAR, STATE)			

PERSONAL HISTORY STATEMENT OF TECHNICAL PERSONNEL WITHIN YOUR FIRM

NAME RICHARD EVERINGHAM			STATUS (Underline) Full-Time <input checked="" type="checkbox"/> Part-Time <input type="checkbox"/>			NAME ROBEBY WILLIS			STATUS (Underline) Full-Time <input checked="" type="checkbox"/> Part-Time <input type="checkbox"/>		
TITLE OR POSITION DESIGN COORDINATOR			YEARS OF EXPERIENCE 32			TITLE OR POSITION PROJECT MANAGER			YEARS OF EXPERIENCE 21		
WITH THIS FIRM 25	WITH LAST FIRM (NAME & NO. OF YEARS) BELT COLLINS, 4		WITH OTHER FIRMS 3			WITH THIS FIRM 20	WITH LAST FIRM (NAME & NO. OF YEARS) R. M. TOWILL CORP., 1		WITH OTHER FIRMS 0		
EDUCATION (COLLEGE, DEGREE, YEAR, SPECIALIZATION) MARCUS OLDHAM COLLEGE, BACHELOR OF AGRICULTURAL MANAGE., 1992						EDUCATION (COLLEGE, DEGREE, YEAR, SPECIALIZATION) UNIVERSITY OF WASHINGTON, BACHELOR OF LANDSCAPE ARCH., 2004					
REGISTRATION (TYPE, YEAR, STATE)						REGISTRATION (TYPE, YEAR, STATE)					
NAME CHIH-PING (KAREN) CHEN			STATUS (Underline) Full-Time <input checked="" type="checkbox"/> Part-Time <input type="checkbox"/>			NAME SU LI			STATUS (Underline) Full-Time <input checked="" type="checkbox"/> Part-Time <input type="checkbox"/>		
TITLE OR POSITION LANDSCAPE ARCHITECT			YEARS OF EXPERIENCE 9			TITLE OR POSITION LANDSCAPE DESIGNER			YEARS OF EXPERIENCE 2		
WITH THIS FIRM 7	WITH LAST FIRM (NAME & NO. OF YEARS) LOTUS LANDSCAPE DESIGN, 2		WITH OTHER FIRMS 0			WITH THIS FIRM 1	WITH LAST FIRM (NAME & NO. OF YEARS) LANDDDESIGN 1		WITH OTHER FIRMS 0		
EDUCATION (COLLEGE, DEGREE, YEAR, SPECIALIZATION) UNIVERSITY OF WASHINGTON, MASTER OF LANDSCAPE ARCH., 2016						EDUCATION (COLLEGE, DEGREE, YEAR, SPECIALIZATION) UNIVERSITY OF WASHINGTON, MASTER OF LANDSCAPE ARCH., 2023					
REGISTRATION (TYPE, YEAR, STATE) PLA, 2023, WA						REGISTRATION (TYPE, YEAR, STATE)					
NAME			STATUS (Underline) Full-Time <input type="checkbox"/> Part-Time <input type="checkbox"/>			NAME			STATUS (Underline) Full-Time <input type="checkbox"/> Part-Time <input type="checkbox"/>		
TITLE OR POSITION			YEARS OF EXPERIENCE			TITLE OR POSITION			YEARS OF EXPERIENCE		
WITH THIS FIRM	WITH LAST FIRM (NAME & NO. OF YEARS)		WITH OTHER FIRMS			WITH THIS FIRM	WITH LAST FIRM (NAME & NO. OF YEARS)		WITH OTHER FIRMS		
EDUCATION (COLLEGE, DEGREE, YEAR, SPECIALIZATION)						EDUCATION (COLLEGE, DEGREE, YEAR, SPECIALIZATION)					
REGISTRATION (TYPE, YEAR, STATE)						REGISTRATION (TYPE, YEAR, STATE)					

OUTSIDE ASSOCIATES AND CONSULTANTS USUALLY EMPLOYED

DISCIPLINE	NAME OF FIRM OR INDIVIDUAL	DISCIPLINE	NAME OF FIRM OR INDIVIDUAL

ERRORS AND OMISSIONS INSURANCE

DOES YOUR FIRM HAVE ERRORS & OMISSION (E&O) INSURANCE? (Underline)			AMOUNT OF COVERAGE PER CLAIM	AMOUNT OF DEDUCTIBLE
<input type="checkbox"/> YES	<input type="checkbox"/> NO	PROJECT INSURANCE	2,000,000.00 \$	10,000.00 \$

Submit proof of insurance or insurability from your insurance carrier with this form.

**SUMMARY OF YOUR FIRM'S COMPLETED AND PRESENT PROJECTS DURING THE LAST TEN YEARS
AS A PRIME A/E CONSULTANT**

TOTAL NUMBER OF COMPLETED PROJECTS	
TOTAL ESTIMATED CONSTRUCTION COST OF COMPLETED PROJECTS	\$
TOTAL NUMBER OF PRESENT PROJECTS	
TOTAL ESTIMATED CONSTRUCTION COST OF PRESENT PROJECTS	\$

AS AN ASSOCIATE WITH OTHER A/E CONSULTANTS

TOTAL NUMBER OF COMPLETED PROJECTS	394
TOTAL ESTIMATED CONSTRUCTION COST OF COMPLETED PROJECTS (ONLY THE PORTION OF WORK FOR WHICH YOUR FIRM WAS RESPONSIBLE)	\$ 53,130,500
TOTAL NUMBER OF PRESENT PROJECTS	36
TOTAL ESTIMATED CONSTRUCTION COST OF PRESENT PROJECTS (ONLY THE PORTION OF WORK FOR WHICH YOUR FIRM IS RESPONSIBLE)	\$ 6,775,000

CLASS OF WORK AND PROJECT TYPE SPECIALIZATION

TYPE OF PROJECT	TOTAL NO. OF COMPLETED PROJECTS	TOTAL ESTIMATED CONSTRUCTION COST	TOTAL ESTIMATED PROJECT SIZE (G.S.F.)
RESIDENTIAL LANDSCAPE (Apts, Condos, Single Family, etc.)	117	17,360,000	NOT AVAILABLE
RESIDENTIAL COMMUNITY PLANNING	94	N / A	NOT AVAILABLE
COMMERCIAL LANDSCAPE (Office, Retail, Industrial, etc.)	98	15,175,000	NOT AVAILABLE
COMMERCIAL / MIXED-USE PLANNING	43	N / A	NOT AVAILABLE
PARKS & OPEN SPACES - LANDSCAPE	35	16,800,000	NOT AVAILABLE
INSTITUTIONAL - LANDSCAPE	7	3,795,500	NOT AVAILABLE

GCH NOTE: Numbers provided are best estimates based on known data, Landscape Architect not typically provided final construction costs. Categorize your firm's class for work during the last ten years by project type. Examples of project types include Educational, Commercial, Industrial, Residential, Health Care, Correctional and Judicial Facilities. Work may also be categorized as planning, civil sitework, renovation/alteration, architectural barrier removal, fire alarm system, etc.

PRESENT/COMPLETED PROJECTS IN WHICH YOUR FIRM IS/WAS DESIGNATED THE PRIME CONSULTANT (BY TYPE)

(LIST A MAXIMUM OF 10 PROJECTS FOR EACH DISCIPLINE/TYPE OF WORK BEING APPLIED FOR. LIST PROJECTS THAT REFLECT YOUR ABILITY TO PROVIDE QUALITY WORK FOR YOUR REQUESTED PROJECTS.)

TYPE:							
YEAR	NAME AND LOCATION OF THE PROJECT	NAME OF LEAD DESIGNER	NAME, ADDRESS, PHONE & FAX NO. OF THE OWNER	ESTIMATED CONST. COST (\$)	DURATION FOR DESIGN (MONTHS)	% COMPLETED	
						DESIGN	CONST.

PRESENT/COMPLETED PROJECTS THAT YOUR FIRM IS/WAS ASSOCIATED WITH OTHERS (BY TYPE)

(LIST A MAXIMUM OF 10 PROJECTS FOR EACH DISCIPLINE/TYPE OF WORK BEING APPLIED FOR. LIST PROJECTS THAT REFLECT YOUR ABILITY TO PROVIDE QUALITY WORK FOR YOUR REQUESTED PROJECTS.)

TYPE: MASTER AND COMMUNITY PLANNING SERVICES								
YEAR	NAME AND LOCATION OF THE PROJECT	NAME, ADDRESS, PHONE & FAX NO. OF THE OWNER	ESTIMATED CONSTRUCTION COST		DURATION FOR DESIGN (MONTHS)	PRIME FIRM ASSOCIATED WITH	% COMPLETED	
			ENTIRE PROJECT	YOUR FIRM'S WORK			DESIGN	CONST.
CURR.	Semiahmoo Spit Updates Blaine, WA	Wise Enterprise Group, LLC Scottsdale, Arizona	N/A	N/A TO PLANNING	1	N/A	5%	N/A
CURR.	Bellingham Old Town Village Bellingham, WA	Nor Pac Equities Dev. Inc Seattle, WA	N/A	N/A TO PLANNING	23	N/A	80%	N/A
CURR.	M.C. Gateway Community Walla Walla, WA	Withheld	N/A	N/A TO PLANNING	11	N/A	90%	N/A
2024	Soul Resort Community El Dabaa, Egypt	Eagle Hills Egypt for Management & Investment of Projects S.A.E Cairo, Egypt	N/A	N/A TO PLANNING	19	N/A	100%	N/A
2024	Old Fort Lake Mixed-Use Community Dupont, WA	Copperleaf Investments	N/A	N/A TO PLANNING	8	N/A	100%	N/A
2024	Elysian Fields Wellness Retreat Snohomish, WA	Withheld	N/A	N/A TO PLANNING	4	N/A	100%	N/A
2024	Silverhawk Ferndale, WA	Cultivate Development Bellingham, WA	N/A	N/A TO PLANNING	27	N/A	100%	N/A
2023	Cava Mine Pierce County, WA	Terragon LLC Seattle, WA	N/A	N/A TO PLANNING	2	N/A	100%	N/A
2023	Riverfront Development Kura River, Georgia	Eagle Hills International Properties LLC Abu Dhabi, UAE	N/A	N/A TO PLANNING	4	N/A	25%	N/A
2021	Chelan Bay Chelan, WA	Tripin, INC Wenatchee, WA	N/A	N/A TO PLANNING	37	N/A	100%	N/A

Explain firm's individual project assignment, project management structure, project execution (work flow and responsibilities) and quality control process. In the event the spaces provided on this form are not sufficient for entries, or if you wish to furnish additional information, it may be inserted here or on separate sheets, with appropriate references.

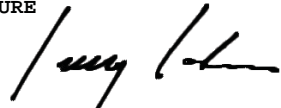
At the core of GCH's process is comprehensive site analysis and robust collaboration with our clients and the larger design team. It is only through the alignment of site-specific characteristics, various stake-holder perspectives, and the client's objectives and capabilities, that we are able to derive the most fitting and enduring design solutions. We also maintain a hands-on approach throughout project construction, ensuring that the principles and vision of the design are meticulously executed into the final built environment.

It is the policy of GCH that no professional design document for a project shall be distributed until its contents have been reviewed and approved in accordance with our QA/QC processes. All GCH project managers and staff work together to ensure that the adequacy, suitability and quality of our work meets or exceeds the highest level of industry standards.

The objective of our internal quality control review process is to identify conflicts, to ask questions and to raise issues regarding design features that have the potential to present a future problem. To ensure sound organization and management throughout our projects, a formal review system is utilized. Critical elements of our QA/QC program are:

- A GCH Founding Principal is involved in every project as overall Project Lead and is responsible for the successful outcome of that project's design.
- A GCH Senior Project Manager/Designer is involved in every project and is responsible for the successful management of the project design.
- The Graphics and Design Team provide a wide breadth of creative and technical knowledge to each project and answer to the Project Manager and Partner.
- All project designs include the above groups working together as a team towards the common goals defined by the client at the beginning of the project.
- Prior to each stage of design delivery, Designs go thru a review system including the above groups. Each individual within these groups has their own assigned color coding system so all participants are aware of who is notating, reviewing, clarifying and back-checking; and if any reviewer's input is still needed. Final review is always completed by a GCH Principal or the Landscape Architect of Record.
- A GCH Site Construction Coordinator is available to GCH clients on each of our projects to ensure that the designs are properly implemented by the contractor on site during the implementation stage.

As of this date _____ the foregoing is a true statement of facts.

<p>NAME OF FIRM OR INDIVIDUAL SUBMITTING QUESTIONNAIRE GEYER COBURN HUTCHINS LLC</p>	<p>TYPE NAME AND TITLE OF PERSON SIGNING JERRY COBURN, FOUNDING PRINCIPAL</p>	<p>SIGNATURE </p>
---	--	---

NOTE: It is to a firm's advantage to maintain its experience record on a current basis. This may be accomplished by periodically forwarding current data to DAGS.

PRINCIPALS ONLY - ADDITIONAL INFORMATION

NAME JERRY COBURN	TITLE AND POSITION FOUNDING PRINCIPAL	YEARS WITH FIRM 28
MAJOR RESPONSIBILITIES WITH THIS FIRM INCREASE BRAND RECOGNITION AND FINANCIAL GROWTH, INCLUDING ESTABLISHMENT AND TRACKING OF BUSINESS GOALS ; MANAGE PROJECTS AND STAFF		

PRIOR EMPLOYMENT

(START WITH LATEST EMPLOYMENT PRIOR TO JOINING THIS FIRM AND PROVIDE SIMILAR INFORMATION FOR EACH SEPARATE EMPLOYMENT OR MAJOR CHANGES IN DUTIES WITH THE SAME EMPLOYER.)

FIRM: BELT COLLINS	DATE FROM: 1994 TO: 1997	FIRM: OY M&SF DESIGN PARTNERSHIP	DATE FROM: 1992 TO: 1994
ADDRESS: HONOLULU, HAWAI'I		ADDRESS: TAIPEI, TAIWAN	
JOB TITLE: PROJECT LANDSCAPE ARCHITECT		JOB TITLE: PROJECT LANDSCAPE ARCHITECT	
SUPERVISOR'S NAME AND TITLE:		SUPERVISOR'S NAME AND TITLE:	
MAJOR DUTIES: MANAGE PROJECTS FROM CONCEPTUAL DESIGN THROUGH CONSTRUCTION DOCUMENTS AND CONSTRUCTION ADMINISTRATION.		MAJOR DUTIES: MANAGE PROJECTS FROM CONCEPTUAL DESIGN THROUGH CONSTRUCTION DOCUMENTS AND CONSTRUCTION ADMINISTRATION.	

FIRM: BELT COLLINS	DATE FROM: 1991 TO: 1992	FIRM: MAISEMA JA SUUNNITTELU FAIRHURST	DATE FROM: 1990 TO: 1991
ADDRESS: HONOLULU, HAWAI'I		ADDRESS: HELSINKI, FINLAND	
JOB TITLE: PROJECT LANDSCAPE ARCHITECT		JOB TITLE: DESIGN LANDSCAPE ARCHITECT	
SUPERVISOR'S NAME AND TITLE:		SUPERVISOR'S NAME AND TITLE:	
MAJOR DUTIES: MANAGE PROJECTS FROM CONCEPTUAL DESIGN THROUGH CONSTRUCTION DOCUMENTS AND CONSTRUCTION ADMINISTRATION.		MAJOR DUTIES: MANAGE PROJECTS FROM CONCEPTUAL DESIGN THROUGH CONSTRUCTION DOCUMENTS AND CONSTRUCTION ADMINISTRATION.	

PRINCIPALS ONLY - ADDITIONAL INFORMATION

NAME MURRAY HUTCHINS	TITLE AND POSITION FOUNDING PRINCIPAL	YEARS WITH FIRM 28
--------------------------------	---	------------------------------

MAJOR RESPONSIBILITIES WITH THIS FIRM
INCREASE BRAND RECOGNITION AND FINANCIAL GROWTH, INCLUDING ESTABLISHMENT AND TRACKING OF BUSINESS GOALS ; MANAGE PROJECTS AND STAFF

PRIOR EMPLOYMENT

(START WITH LATEST EMPLOYMENT PRIOR TO JOINING THIS FIRM AND PROVIDE SIMILAR INFORMATION FOR EACH SEPARATE EMPLOYMENT OR MAJOR CHANGES IN DUTIES WITH THE SAME EMPLOYER.)

FIRM: LMN ARCHITECTS	DATE FROM: 1996 TO: 1997	FIRM: EDAW INC.	DATE FROM: 1995 TO: 1996
ADDRESS: SEATTLE, WA		ADDRESS: SEATTLE, WA	
JOB TITLE: DESIGN CONSULTANT		JOB TITLE: DESIGN CONSULTANT	
SUPERVISOR'S NAME AND TITLE:		SUPERVISOR'S NAME AND TITLE:	
MAJOR DUTIES: ADVISE FIRM ON MASTER AND COMMUNITY PLANNING PROJECTS.		MAJOR DUTIES: ADVISE FIRM ON MASTER AND COMMUNITY PLANNING PROJECTS.	

FIRM: BELT COLLINS	DATE FROM: 1991 TO: 1995	FIRM: ECOSIGN MOUNTAIN RESORT PLANNERS	DATE FROM: 1986 TO: 1991
ADDRESS: HONOLULU, HAWAI'I		ADDRESS: WHISTLER, BRITISH COLUMBIA, CANADA	
JOB TITLE: PLANNER		JOB TITLE: PLANNER	
SUPERVISOR'S NAME AND TITLE:		SUPERVISOR'S NAME AND TITLE:	
MAJOR DUTIES: MANAGE PROJECTS FROM EARLY VISIONING THROUGH PERMITTING.		MAJOR DUTIES: MANAGE PROJECTS FROM EARLY VISIONING THROUGH PERMITTING.	

PRINCIPALS ONLY - ADDITIONAL INFORMATION

NAME BOO Y. JANG	TITLE AND POSITION PRINCIPAL	YEARS WITH FIRM 7
MAJOR RESPONSIBILITIES WITH THIS FIRM INCREASE BRAND RECOGNITION AND FINANCIAL GROWTH, INCLUDING ESTABLISHMENT AND TRACKING OF BUSINESS GOALS ; MANAGE PROJECTS AND STAFF		

PRIOR EMPLOYMENT

(START WITH LATEST EMPLOYMENT PRIOR TO JOINING THIS FIRM AND PROVIDE SIMILAR INFORMATION FOR EACH SEPARATE EMPLOYMENT OR MAJOR CHANGES IN DUTIES WITH THE SAME EMPLOYER.)

FIRM: RHODESWORK DESIGN STUDIO	DATE FROM: 2016 TO: 2018	FIRM: BENNETT DESIGN GROUP	DATE FROM: 2007 TO: 2016
ADDRESS: SEATTLE, WA		ADDRESS: LONG BEACH, CA	
JOB TITLE: LANDSCAPE DRAFTER		JOB TITLE: PROJECT MANAGER	
SUPERVISOR'S NAME AND TITLE:		SUPERVISOR'S NAME AND TITLE:	
MAJOR DUTIES: PROVIDE TECHNICAL CAD DRAWINGS, TEMPLATES AND 3D MODELS FOR PRODUCTION AND ASSEMBLY.		MAJOR DUTIES: MANAGEMENT/PRODUCTION OF DESIGN PROJECTS, COORDINATION WITH CLIENTS, AND PROPOSALS/MARKETING MATERIALS	

FIRM:	DATE FROM: TO:	FIRM:	DATE FROM: TO:
ADDRESS:		ADDRESS:	
JOB TITLE:		JOB TITLE:	
SUPERVISOR'S NAME AND TITLE:		SUPERVISOR'S NAME AND TITLE:	
MAJOR DUTIES:		MAJOR DUTIES:	

Professional Services Request for Qualifications

Community Planning Services
Fiscal Year 2025-2026

[Appendix B - Company Brochure](#)





GEYER COBURN HUTCHINS

Landscape Architecture

Land Planning

Golfscape Design International

GCH is committed to the highest quality of work, focusing on seeing our client's projects from the early planning studies, through design phases, and ultimately through the construction supervision process. The firm has an extensive portfolio working for both private and public clients in the land planning and landscape architectural roles throughout the US and the world. We offer client and site specific planning and design solutions, understanding that each project is distinctively characterized by its own unique set of challenges and attributes.

At GCH, we underscore a holistic approach to all planning and landscape design phases. This involves a meticulous examination of short and long-term goals, encompassing physical, environmental, social, cultural, and economic elements crucial for successful development. We are unwaveringly committed to providing innovative, environmentally conscious, and sustainable design solutions that blend creativity with feasibility.

Our process involves in-depth site analysis, coupled with robust client and design team collaboration, to derive the most fitting and enduring design solutions that align with the client's objectives and capabilities. Utilizing our extensive experience, we conduct on-site reviews during construction to ensure the seamless translation of design principles into the final built environment.

GCH measures our success by the achievements of our completed projects and the satisfaction of our clients. We pride ourselves on demonstrating a commitment to excellence in every facet of our work; and not just meeting, but exceeding our client's expectations.



RELEVANT
EXPERIENCE

PATAGONIA CONSERVATION RESERVE SEA TO SEA TRAIL

Location: Tierra del Fuego, Argentina

Scope: Land analysis

Program: Residential communities, resorts, remote lodging, commercial center and trails

Size: 250,000 Acres

Description: GCH conducted a conservation and development feasibility analysis studying over 250,000 acres of land in Tierra del Fuego, Argentina, with the goal of preserving more than 94% of the total area in perpetuity. This area comprises part of the Patagonia region and is considered one of the world's premier trekking and eco-tourism destinations. Sensitive ecosystems, plant species, soil and tree types, wild life and view corridors were studied as a whole to identify critical areas and patterns of preservation. Areas of local ongoing farming and sustainable forestry were analyzed for conservation as well as to promote local economic stability. A trail route is also integrated within the overall planning study, linking the Atlantic and Pacific oceans through Argentina and Chile. National Geographic is currently assembling a documentary which will highlight the areas to be under conservation, and the process preserving this sensitive region.



DUPONT MIXED-USE COMMUNITY OLD FORT LAKE

Location: DuPont, Washington

Scope: Master planning

Program: Residential lots, commercial zones, neighborhood retail centers, hospitality, schools, road and trail system, parks and open spaces, cultural resource zones

Size: 262 acres

Description: This comprehensive planning project involved the analysis and design of a 260 acre piece of land in the city of DuPont, Washington. The project owner is currently working with the Department of Ecology and the Attorney General to cleanup and reclaim the hazardous site that surrounds Old Fort Lake, much of The Home Course golf course, and abuts Nisqually tribal lands. The project goal is ultimately to create a legacy project that compliments the city's character and offers new housing and amenity opportunities for the public.



SERI TANJUNG PENANG

Location: Tanjung, Malaysia

Scope: Master planning, site planning

Program: Civic buildings, retail, golf course, marina, residential districts

Size: 300 Hectares

Description: This 300 hectare project off the coast of Penang is a landfill project consisting of three inter-connected islands for which GCH is providing master planning and site planning services. The project's entertainment district includes a conference and exhibition facility, sports stadium, 18-hole golf course, recreation complex, as well as cultural and religious centers. The commercial district includes hotels, retail and restaurants, shopping center, civic buildings and marinas. Residential districts are integrated throughout the islands as multifamily, condominium, townhouses and villas.



M.C. GATEWAY COMMUNITY

Location: Walla Walla, Washington

Scope: Concept master plan

Program: Residential parcels, hospitality zone, commercial hub, parks and open spaces, circulation

Size: 357 acres, 670 residential units

Description: GCH worked closely with Jensen Design Architects on the master plan for a new Urban Planned Development in Walla Walla, Washington. The community program includes single family and town homes, resort hotel with amenities, and a commercial zone including winery, event spaces, and retail. The community will be integrated with 145 acres of public open space, including parks, nature preserve, vineyards, recreation, amenities, and trails.



SILVERHAWK

Location: Ferndale, Washington

Scope: Site analysis, concept master plan

Program: Residential parcels, parks and open spaces, circulation

Size: 25 acres, 310 residential units

Description: GCH provided planning services on this multi-family residential community in Ferndale. Silverhawk is a mixed-use development including apartments, townhomes, and live/work units with small zones also set aside for commercial and retail use. Special attention was given to the existing wetlands which make up roughly six areas of the site and will now create focal points for the park and trail system. A careful balance of preservation and strategic development enhances this environmentally sensitive area, ensuring its long-term sustainability.



FOSHAN RESIDENTIAL COMMUNITY

Location: Foshan City, China

Scope: Master planning, concept design, schematic design, design development

Program: Public trail system around lake, public parks, waterfront terraces, water features, private gardens, entry courts, plazas, tree-lined residential streets, lookout tower

Size: 70 hectares

Description: The vision for the Foshan Residential Development is the creation of a premier community that complements the existing beauty of the land and highlights the spectacular waterways throughout. Residential areas will be connected to each other as well as to amenities of the overall development by various trails systems along roadways. Existing landscape features will be preserved and integrated into the overall development as much as possible.



OLD TOWN URBAN CENTER

Location: Bellingham, Washington

Scope: Planning, city meetings, public hearings, concept design, design guidelines, landscape design (certain development blocks)

Size: 8.5 acres

Description: GCH has been working with the project developer and the City of Bellingham to transform an industrial area adjacent to the city's waterfront into a new urban center. Through thoughtful integration of historical buildings and features, multi-modal circulation patterns, and amenities for both residents and commercial tenants, a vibrant and pedestrian-centered community concept has emerged. Design guidelines for the overall development and early phase landscape design were also created to ensure a consistent aesthetic throughout the district.



SOUL LUXURY RESORT COMMUNITY

Location: North Coast, Egypt

Scope: Innovation strategy, design narrative, development opportunities, site analysis, land use planning, long-range planning

Size: 517 acres

Program: Stand-alone villas, townhomes, chalets, apartments, circulation systems, hotels, cabanas, commercial areas, sports fields, open spaces, green corridors

Description: GCH has been working on Egypt's idyllic North Coast of the Mediterranean Sea providing master planning for the extraordinary, "Soul" destination. Working alongside the Emaar Misr/Eagle Hills team, the group has envisioned a destination of unsurpassed elegance, innovation and sustainability throughout the region. The EcoLuxe destination includes more than 20 kilometers of water frontage and 1.5 kilometers of sandy coastline. A never seen before, elevated "infinity beach" in the property's interior doubles the project's sandy beach experience and provides stunning views up and down the coastline of this already sought after destination.



RAVENWING RESORT

Location: Malaga, Washington

Scope: Concept design, schematic design, design development, construction documentation

Description: GCH has assisted the Owner's with the landscape design of a neighborhood entry and several homes within the community. The site is one of the most dramatic and unique community in the Northwest. Through a detailed design process, the homes, trails, and amenities of the community are nestled into the landscape while creating minimal impact to the site. Firewise landscape principals are used for each home and a mix of plants that are fire resistant.



TEHALEH

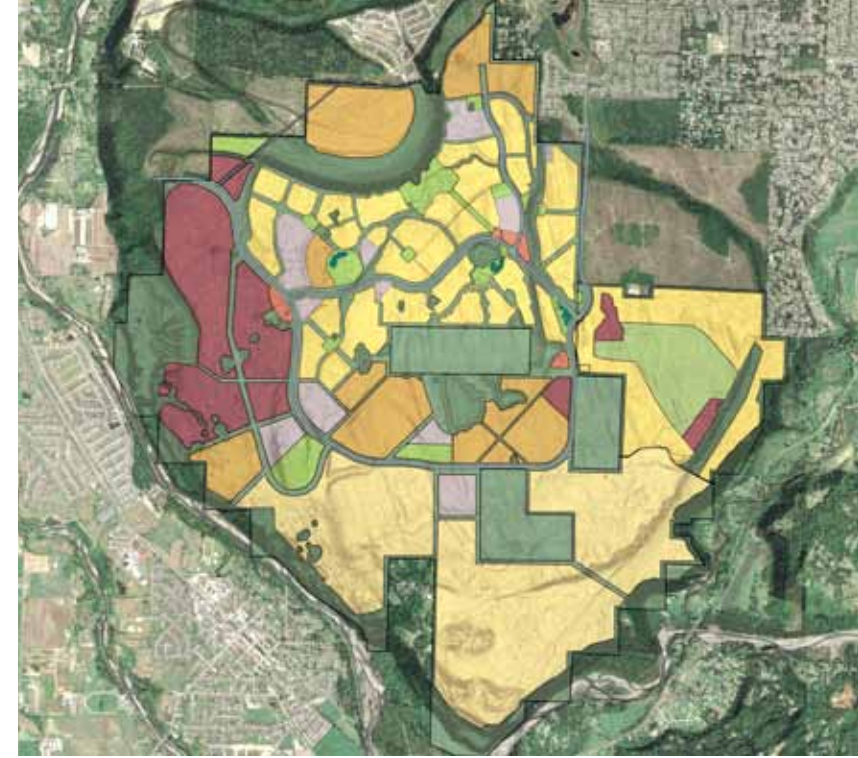
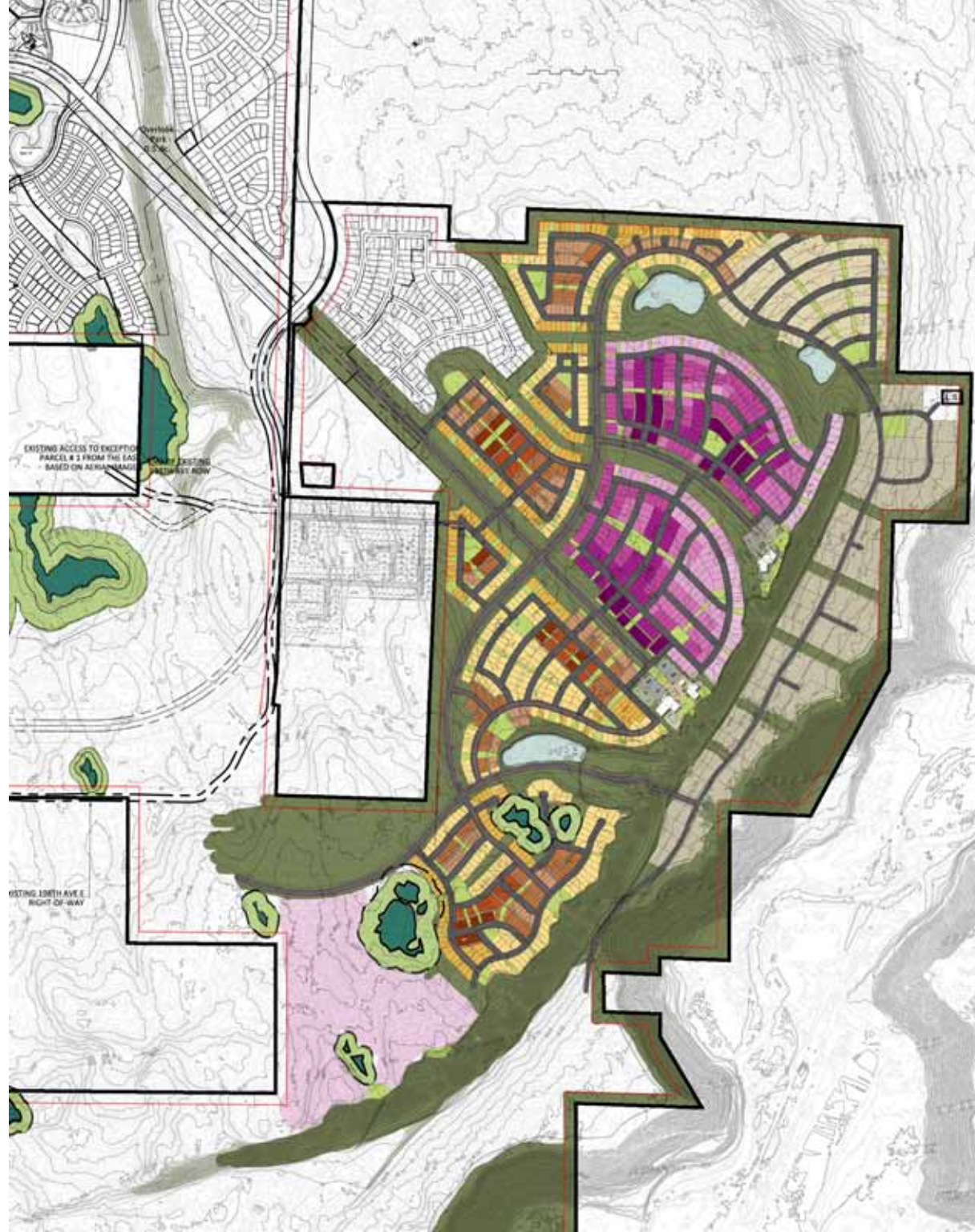
Location: Pierce County, Washington

Scope: Master planning

Program: Public parks, trail systems, schools, employment center, wetland preservation, road network.

Size: 4,200 Acres

Description: This comprehensive planning process involved integration of all aspects for a new community from the ground up, including 9,000 residential units, business parks, schools, neighborhood retail and civic centers, parks and trail systems, transportation, etc. The site's natural characteristics such as preserved open space, Rainier views, and wetlands were woven into the fabric of the infrastructure, roads, and development. Small residential neighborhoods have been set within existing stands of trees and natural open space corridors to create a sense of scale and connection to the environment.



OQYANA WORLD FIRST

Location: Dubai, United Arab Emirates

Scope: Master planning, site planning, concept design, schematic design, design development, construction documentation

Size: 46 Hectares land in 186 hectares of ocean

Description: Perhaps the most aggressive development project currently underway in the World is a project in Dubai known by those same words, "The World". A destination residential resort located seven kilometers off the coast of Dubai in the UAE. Our portion of the project, known as "Oqyana" is the region designated in the "The World" for Australia, New Zealand and the Island communities of the South Pacific. Land fill aspects of the project are well underway and the landscape design is in the design development phase currently.



CAVA MINE

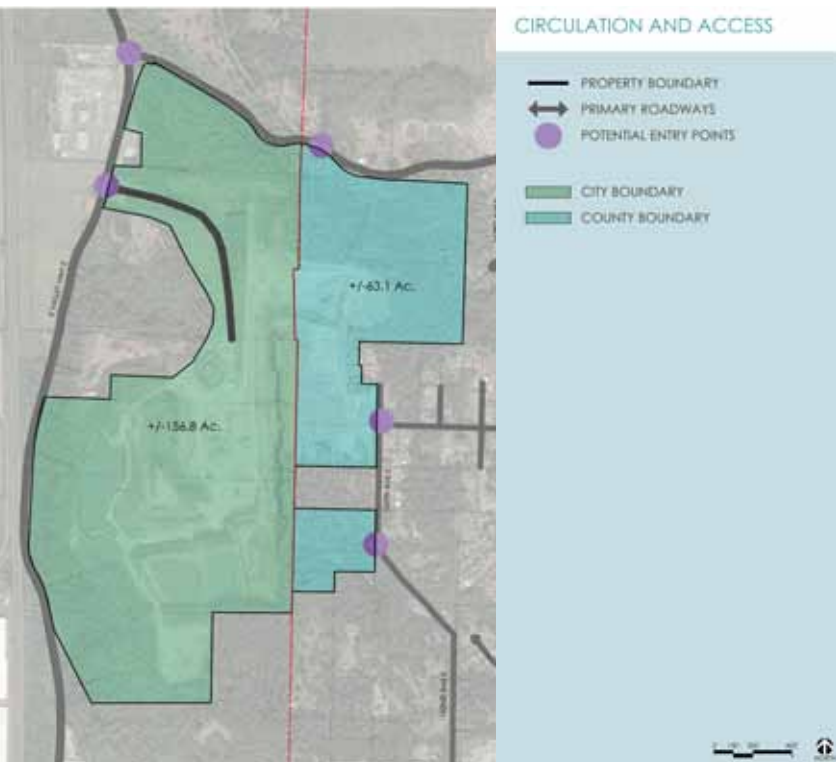
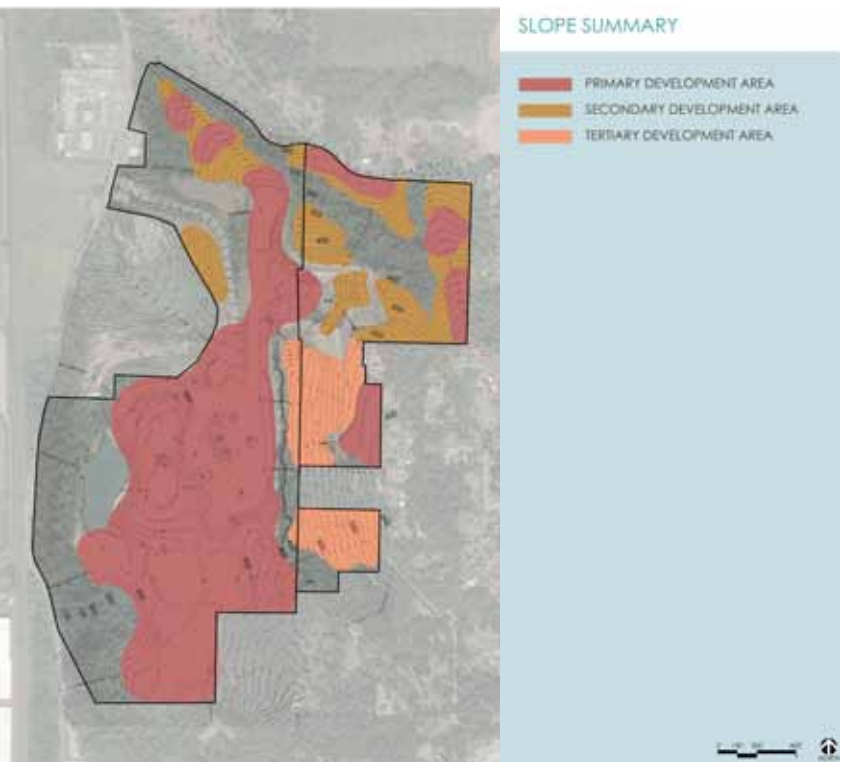
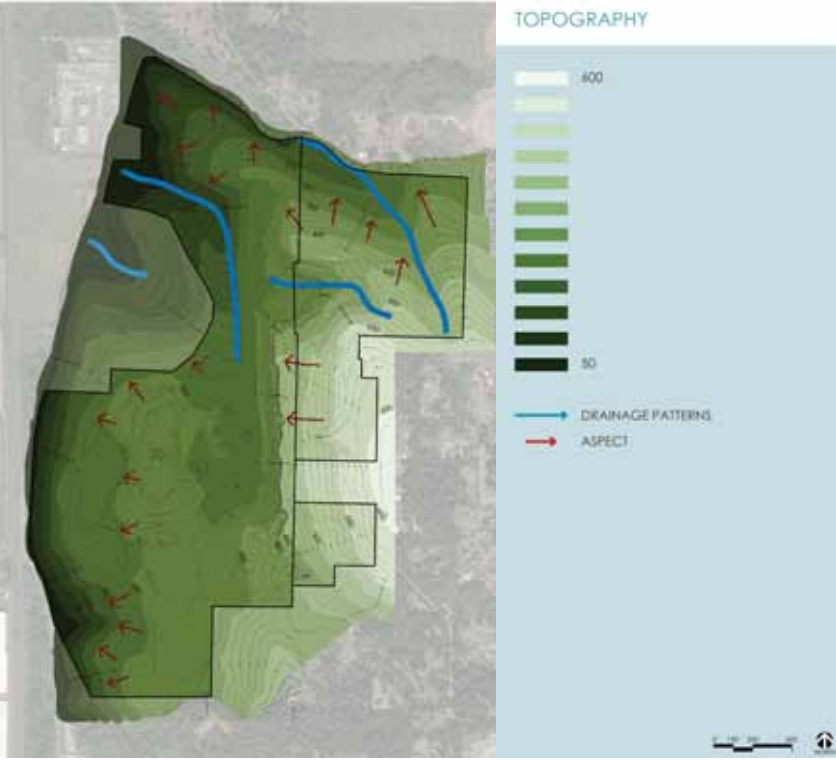
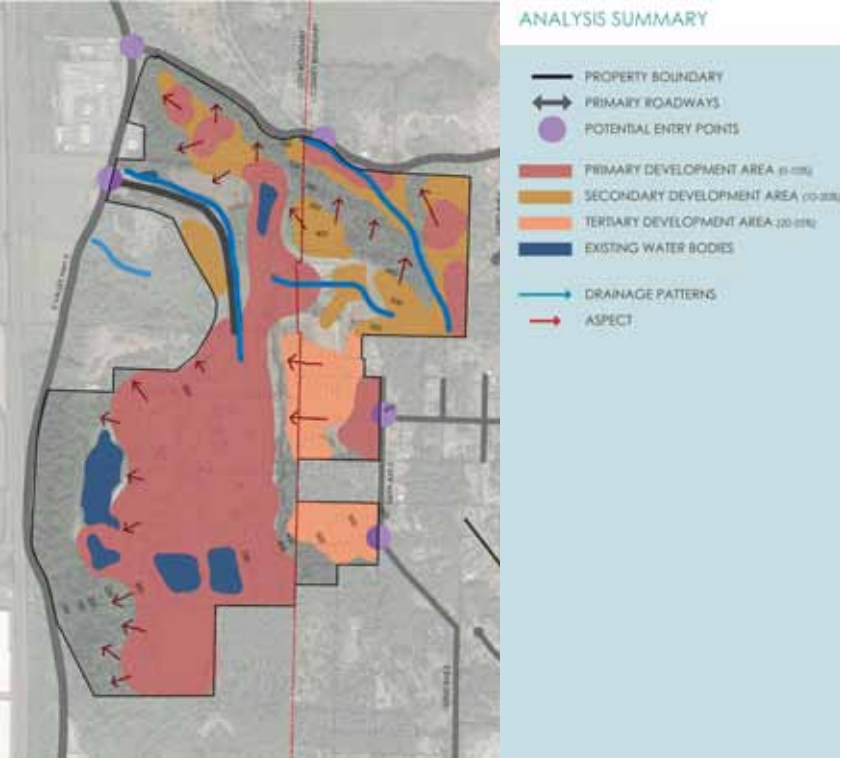
Location: Pierce County, Washington

Scope: Development Concept

Program: Residential community, trails, open spaces, recreation areas, community features

Size: 220 acres, 917 residential units

Description: The Cava Mine development plan is based on a diverse and complimentary mix of adaptive reuse for a former mining operation. The intent is to create a place with a broad blend of residents and visitors to activate the development through various times of the day and year. The general program includes low and mid density single family homes, as well as a multi-family zone with resident clubhouse amenities. Open space and “green boulevard” connections are intended to be unifying factors in knitting the community identity together.



FAILAKA ISLAND

Location: Failaka Island, Kuwait

Scope: Master planning, site planning

Program: Retail districts, residential communities, educational center, sports facilities, two Robert Trent Jones II golf courses, zoo, large scale native gardens, parks, water park, villages, multiple hotels, marinas, science center, heritage village

Size: 4,600 hectares

Description: Failaka Island is located just off the coast of Kuwait in the Persian Gulf. This large scale planning project sets out to create a national and international world class destination. This master plan sets out to create several very different but cohesive nodes of interest on the island with vibrant corridors that will transform the currently barren landscape through restoration of the island's history and culture. The client's vision included an island that would be free of cars for visitors to enhance the unique experience.



SEMIAHMOO RESORT

Location: Blaine, Washington

Scope: Regional planning, site design, concept design, schematic design, design development

Program: Hotel, residential, resort retail, market, amphitheater, historic buildings, public waterfront, trails, monuments and signage, campus planning

Size: 2,400 acres

Description: Semiahmoo Resort is one of the leading destination resorts in the Pacific Northwest. Adjacent to the Canada-US border, the resort covers several hundred acres of prime waterfront property. GCH has assisted Semiahmoo Resort in all stages of planning, site design and landscape architecture over the past several years. Work for Semiahmoo has included long range feasibility and planning studies covering several hundred acres, historic waterfront re-use programming and design, hotel amenity design, waterfront trail systems and revegetation, entry monuments, site planning for a destination golf academy and numerous residential community designs.



ROCKY POND RESORT

Location: Orondo, Washington

Scope: Master planning and site planning.

Program: Hotel, winery, spa, event pavilion, residences, trails, event lawn, culinary gardens, vineyards, orchards, pools, parking and roadways.

Size: 50 acres

Description: Rocky Pond Resort is located on the cliffs of the Columbia River in eastern Washington. GCH has assisted with the overall master plan for the entire property, as well as the site planning for exterior amenities and all program elements. The focal point of the resort will be a destination event venue with adjacent hotel and gardens; the site will also boast state-of-the-art conference facilities, winery and distillery tasting rooms, a spa, multiple pools, trails, parks, and various indoor and outdoor performance venues. The resort, as well as the surrounding small clusters of homes and amenities, are integrated within the rugged natural landscape of the surrounding area.



LAKE NANLI

Location: Hainan, China

Scope: Resort planning, community planning

Program: Entertainment and commercial hubs, marina, hotels, residential, open spaces, amenities

Size: 158 Hectares

Description: The long range vision for Nanli is the creation of a destination resort and regional tourism hub. The resort is anchored by a marina and entertainment/commercial/retail core surrounded by various recreational/leisure amenities and residential communities. There is an open space and trail network linking all parts of the community together and providing access to the several parks and places along the waterfront. Careful site analysis and integration of development within the lake front topography was critical in preserving the natural shoreline and character of the site.



OCOTILLO COMMUNITY

Location: Chandler, Arizona

Scope: Planning, city meetings, public hearings, concept design, schematic design, design development

Size: 100 acres

Description: GCH provided planning and landscape architectural services on this project which covers over 100 acres within the city of Chandler. Ocotillo is a mixed-use residential development including 1,000 total residential units of villas, apartments and condominiums with a commercial/retail core. The community has a fully integrated green system of parks, trails and pedestrian ways internally connecting the entire community. The project is designed around waterways sourced from the City of Chandler's treated effluent which is also used to irrigate all landscape areas within the project.



STOCKING ISLAND CLUB

Location: Great Exuma, Bahamas

Scope: Site planning, concept design, detailed plans, & schematic design

Size: 34 Hectares

Description: GCH was hired by a private equity firm to provide master planning and landscape architecture to sustainably develop their property on Stocking Island into an exclusive hotel and private residential club. The site includes a rare combination of pristine, calm “bay side” beaches and Atlantic facing beaches connected by significant elevation change, indigenous plant material and unique limestone formations. The master plan was designed to maximize on exclusivity to the private estates while providing a vibrant and versatile boutique hotel and spa of the highest caliber. Preservation and enhancement of the unique and precious marine and plant life was integral to the design as is the historic significance of the island.



POINT ROBERTS

Location: Whatcom County, Washington

Scope: Master planning

Program: Marina, beach/yacht club, residential, open space, public & private parks, trail systems, parking, retail, restaurant

Size: 152 Acres

Description: The vision for the Point Roberts waterfront development was the creation of a premier destination water-front resort community that compliments the existing beauty of the region while maintaining economic profit and sustainability. This involved the analysis and re-envisioning of the current marina and marina facilities, as well as the 150 acres of surrounding land. The master plan included a beach/yacht club, marina village, recreation center, and 250 residential units. These program elements were to be integrated while maintaining the existing marina and marina circulation including parking and access. There was an extensive wetland an natural drainage network the was enhanced and integrated within the community open space and trail system, creating natural habitats and amenities for visitors and residents to experience.



WANGJING BUSINESS DISTRICT

Location: Beijing, China

Scope: Master planning

Size: 105 Hectares

Description: A competition for a new urban development on the edge of Beijing, The Grand Wangjing Business District is envisioned to be a community where ecology and economics go hand in hand. Working closely with NBBJ, GCH assisted in the planning and conceptual landscape design of this area, with a special emphasis on the use of sustainable features such as green roofs, bio filter zones, multi-modal transit, and energy generation systems. The overall plan incorporates retail, civic and residential elements all working together to create a vision of vitality, community and inspiration in harmony with nature.



THE LOOKOUT

A LAKESIDE VILLAGE

Location: Chelan, Washington

Scope: Land analysis, site planning, concept design, schematic design, design development, construction documentation, construction observation

Program: Residential cottages, parks, pools, playfields, trail system

Size: 60 acres

Description: Located on the southern shore of Lake Chelan, “The Lookout” development provides breathtaking views of the adjacent clear blue water and sandy beaches. The goal of this mixed-use residential project is to create a unique environment that fosters a strong sense of community. The landscape design includes several parks, a marina, swimming pools and open space. An extensive trail system creates a walkable neighborhood with access to the lake, throughout the site and to adjacent vineyards.



YEN SO PARK

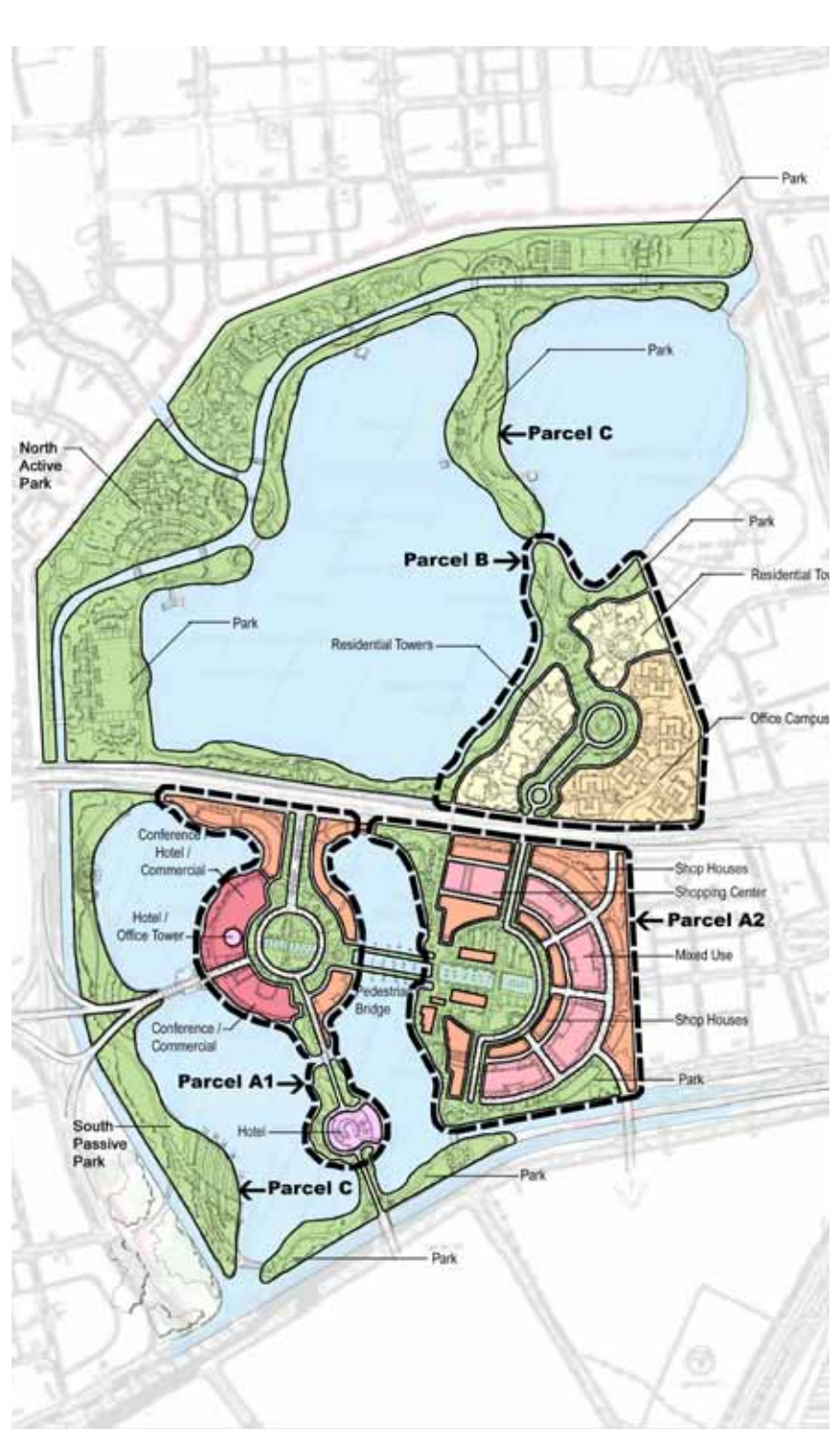
Location: Hanoi, Vietnam

Scope: Master planning

Program: Hotels, convention center, corporate campus, commercial, mixed-use residential, extensive public park system, natural preservation areas.

Size: 150 Hectares

Description: Located within the urban core of Hanoi this project covers over 150 hectares of land surrounding a series of existing lakes. Envisioned to be the new business center and gathering place of Hanoi this project features a 34 acre commercial core area which includes a centrally located convention center and hotel as its iconic focal point supported by symmetrically designed commercial, multi-use and park developments. The plan includes the addition of the largest and most significant public park system in Hanoi which is designed around the project's existing lakes with direct links to the commercial core and residential areas. The park system includes a botanical garden, arboretum, heritage park, cultural gardens and events square to complement the development.



HUALALAI FOUR SEASONS GOLF RESORT MASTER PLANNING

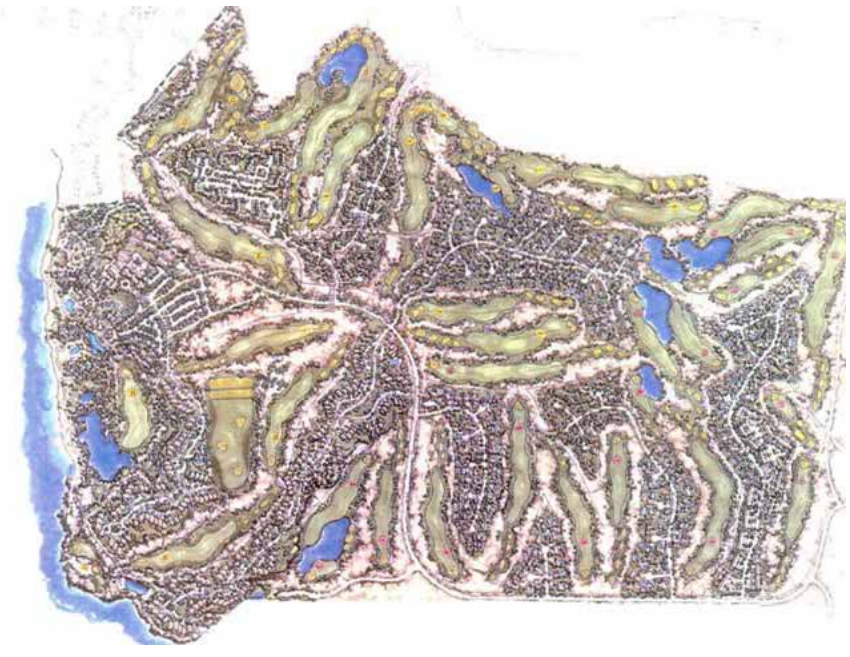
Location: Kailua Kona, Hawaii

Course Architect: Nicklaus Design

Scope: Concept design, schematic design, design development, construction documentation, construction observation

Size: 620 acres

Description: Assisting in the transformation of this ocean-side site from an existing lava flow on the island of Hawaii to golf resort was an important role for our designers. We worked with Jack Nicklaus Design on the landscape aspects of this project which include preservation of lava areas, recreation of lava areas and planting of native trees and ground covers throughout the course. GCH planning staff played a key pivotal role in the careful integration of the course routings as they interacted with shoreline, alkaline ponds, historic trails, residential, hotel and arrival experience. Holes were analyzed and strategically placed to create ocean view corridors from upland residential parcels.





thank you