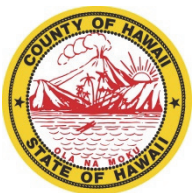


# County of Hawai'i Housing and Community Development



## Statement of Qualifications: OH.2) Community Planning (Environmental Assessment)

June 2025



Prepared for:  
**County of Hawai'i**  
**Housing and Community Development**  
50 Wailuku Drive  
Hilo, Hawai'i 96720



Prepared by:  
**The Limtiaco Consulting Group, Inc.**  
1622 Kananui Street  
Honolulu, Hawai'i 96817



**THE LIMTIACO CONSULTING GROUP**  
CIVIL ENGINEERING AND ENVIRONMENTAL CONSULTANTS

June 30, 2025

Ms. Kehaulani M. Costa, Administrator  
Housing and Community Development  
County of Hawai'i  
1990 Kino'ole Street, Suite 102  
Hilo, Hawai'i 96720

**Re: Notice to Providers of Professional Services**

Dear Ms. Costa:

**The Limtiaco Consulting Group, Inc. (TLCG)** would like to be considered for providing professional services related to projects within:

- **Category OH.2) Community Planning (Environmental Assessment)**

A completed Federal Standard Form 330 describing our firm's capabilities is provided. Included is a list of five references of previous clients who can be contacted for an evaluation of our professional experience and past performance.

We appreciate the opportunity to submit our firm's qualifications and this letter of interest. We look forward to the selection process and would like to take this opportunity to wish you and your staff success in the completion of your Capital Improvement Projects for this fiscal year and subsequent years. If there are any questions or if additional information is required, please do not hesitate to call us at (808) 596-7790.

Very truly yours,  
**The Limtiaco Consulting Group, Inc.**

Ian Y. Arakaki, P.E.  
President  
thegroup@tlcg-hawaii.com

# ARCHITECT – ENGINEER QUALIFICATIONS

## PART I – CONTRACT SPECIFIC QUALIFICATIONS

### A. CONTRACT INFORMATION

1. TITLE AND LOCATION *(City and State)*

**County of Hawai'i, Office of Housing and Community Development**

2. PUBLIC NOTICE DATE

**June 1, 2025**

3. SOLICITATION OR PROJECT NUMBER

**25-26**

### B. ARCHITECT – ENGINEER POINT OF CONTACT

4. NAME AND TITLE

**Ian Arakaki, P.E, Principal**

5. NAME OF FIRM

**The Limtiaco Consulting Group, Inc.**

6. TELEPHONE NUMBER

**(808) 596-7790**

7. FAX NUMBER

8. E-MAIL ADDRESS

**thegroup@tlcgohawaii.com**

### C. PROPOSED TEAM

*(Complete this section for the prime contractor and all key subcontractors.)*

	<i>(Check)</i>			9. FIRM NAME  <input type="checkbox"/> CHECK IF BRANCH OFFICE	10. ADDRESS	11. ROLE IN THIS CONTRACT
	PRIME	J-V PARTNER	SUBCONTRACTOR			
a.	X			The Limtiaco Consulting Group, Inc.  <input type="checkbox"/> CHECK IF BRANCH OFFICE	1622 Kakanui Street Honolulu, Hawai'i 96817	Civil Engineering
b.			X	EnviroServices & Training Center, LLC  <input type="checkbox"/> CHECK IF BRANCH OFFICE	505 Ward Avenue, Suite 202 Honolulu, Hawai'i 96814	Environmental Planning, Hazardous Materials Management
c.			X	Cultural Surveys Hawai'i, Inc.  <input type="checkbox"/> CHECK IF BRANCH OFFICE	P.O. Box 1114 Kailua, Hawai'i 96734	Archaeology
d.			X	Pacific Consulting Services, Inc.  <input type="checkbox"/> CHECK IF BRANCH OFFICE	720 Iwilei Road, Suite 424 Honolulu, Hawai'i 96817	Archaeology
e.			X	AECOS, Inc.  <input type="checkbox"/> CHECK IF BRANCH OFFICE	45-939 Kamehameha Hwy, Suite 104 Kane'ohe, Hawai'i 96744	Biological Reconnaissance, Water Quality Investigations
f.			X	Mason Architects, Inc.  <input type="checkbox"/> CHECK IF BRANCH OFFICE	119 Merchant Street, Suite 501 Honolulu, Hawai'i 96813	Historical Architecture

### D. ORGANIZATIONAL CHART OF PROPOSED TEAM

*(Attached)*



**THE LIMTIACO CONSULTING GROUP**  
CIVIL ENGINEERING AND ENVIRONMENTAL CONSULTANTS

**ENVIRONMENTAL ENGINEERING TEAM**

Ian Arakaki, P.E., CCM, Principal-in-Charge  
Jason Lau, P.E., Principal Engineer  
Kyle Kaneshiro, P.E., Principal Engineer  
Jason Nakata, P.E., Environmental Planner

**SUBCONSULTANTS**

***Environmental Planning/Hazardous Materials Management***  
EnviroServices & Training Center, LLC

***Archaeology***  
Cultural Surveys Hawai'i, Inc.  
Pacific Consulting Services, Inc.

***Biological Reconnaissance/Water Quality Investigations***  
AECOS, Inc.

***Historical Architecture***  
Mason Architects, Inc.

**E. RESUMES OF KEY PERSONNEL PROPOSED FOR THIS CONTRACT**

*(Complete one Section E for each key person.)*

<b>12. NAME</b> <b>Ian Arakaki, P.E., CCM</b>	<b>13. ROLE IN THIS CONTRACT</b> <b>Principal-in-Charge</b>	<b>14. YEARS EXPERIENCE</b>	
		a. <b>TOTAL</b> <b>29</b>	b. <b>WITH CURRENT FIRM</b> <b>23</b>

**15. FIRM NAME AND LOCATION** *(City and State)*  
**The Limtiaco Consulting Group, Inc. Honolulu, Hawai'i**

<b>16. EDUCATION</b> <i>(Degree and Specialization)</i> <b>BS/1996/Civil Engineering</b>	<b>17. CURRENT PROFESSIONAL REGISTRATION</b> <i>(State and Discipline)</i> <b>HAWAI'I 2001/Civil Engineering (No. 10291)</b> <b>HAWAI'I 2013/CMAA Certified Construction Manager (No. 2737)</b> <b>HAWAI'I 2025/CCH DPP Erosion and Sediment Control Plan Coordinator</b> <b>HAWAI'I 2025/CCH NPDES MS4 Construction Inspector Training Certification</b>
---	---

**18. OTHER PROFESSIONAL QUALIFICATIONS** *(Publications, Organizations, Training, Awards, etc.)*  
**American Council of Engineering Companies of Hawai'i**  
**American Society of Civil Engineers – Board of Directors, Past President, 2009-2015**  
**American Water Works Association**  
**Construction Management Association of America**  
**Hawai'i Water Environment Association**  
**Water Environment Federation**

**19. RELEVANT PROJECTS**

	(1) TITLE AND LOCATION <i>(City and State)</i>	(2) YEAR COMPLETED	
		PROFESSIONAL SERVICES	CONSTRUCTION (If Applicable)
a.	<b>Preliminary Engineering Study and Environmental Assessment for 'Aina Haina Reservoir No. 2 Honolulu, Hawai'i</b>	<b>2016</b>	<b>N/A</b>
	(3) BRIEF DESCRIPTION <i>(Brief scope, size, cost, etc.)</i> AND SPECIFIC ROLE Principal-in-Charge for the preparation of a Preliminary Engineering Study (PES) to determine the suitability of the remaining land area within the Board of Water Supply's 'Aina Haina Reservoir No. 1 and Booster Station property to site a second 0.5-million-gallon reservoir. Duties included preparing the PES, conducting a visual impact evaluation from the affected public viewpoints, identifying permit requirements, preparing cost estimates and project timelines, overseeing the soils survey and structural analysis, and attending Neighborhood Board meetings.	<input checked="" type="checkbox"/> Check if project performed with current firm	
b.	<b>Wastewater Program Management (DDC/WEC Staff Augmentation) Honolulu, Hawai'i</b>	<b>On-going</b>	
	(3) BRIEF DESCRIPTION <i>(Brief scope, size, cost, etc.)</i> AND SPECIFIC ROLE Principal-in-Charge responsible for providing technical engineering services to assist the City and County of Honolulu, Department of Environmental Services – Division of Wastewater Engineering and Construction in project management; construction management; and coordination of planning, design, and construction activities. Responsible for construction management services including conducting jobsite meetings, reviewing construction submittals, monitoring the work of the contractor, resolving conflicts, and overseeing final testing and inspection.	<input checked="" type="checkbox"/> Check if project performed with current firm	
c.	<b>Project Management Services for Security Projects Honolulu, Hawai'i</b>	<b>On-going</b>	
	(3) BRIEF DESCRIPTION <i>(Brief scope, size, cost, etc.)</i> AND SPECIFIC ROLE Principal-in-Charge to assist the BWS in management of the Security Capital Improvement Program (CIP). Responsibilities include evaluation of existing physical security systems and alternatives, recommendations for optimum physical security systems (fencing, enclosures, building security), defining and prioritizing physical security CIP projects, development of a physical security CIP plan, and project management services.	<input checked="" type="checkbox"/> Check if project performed with current firm	
d.	<b>Lead Service Line Inventory, Water Quality Study, and Related Technical Services Island-wide, O'ahu, Hawai'i</b>	<b>On-going</b>	
	(3) BRIEF DESCRIPTION <i>(Brief scope, size, cost, etc.)</i> AND SPECIFIC ROLE Principal-in-Charge to assist the BWS in their efforts to bring operations in compliance with the revised EPA Lead and Copper Rule. Duties include program development and management; conducting inter-agency workshops and public outreach activities; preparation of a lead service line (LSL) inventory to identify and catalog the presence of hazardous materials in the BWS water distribution system; preparation of a list of sampling sites for each BWS water system to include residential structures, schools, and licensed child care facilities; conducting tap water sampling analysis; and development of full and partial LSL replacement plans.	<input checked="" type="checkbox"/> Check if project performed with current firm	
e.	<b>Kalaheoa Seawater Desalination Facility Design-Build-Operate-Maintain Ewa, O'ahu, Hawai'i</b>	<b>On-going</b>	
	(3) BRIEF DESCRIPTION <i>(Brief scope, size, cost, etc.)</i> AND SPECIFIC ROLE Principal-in-Charge to assist the BWS with the development of a Request for Proposal (RFP), selection of the best-valued proposal, and execution of a Service Agreement with a DBOM contractor qualified to convert a 20-acre property into a seawater desalination facility. Duties include project coordination; development of a project strategy; assistance in preparing a Design Requirements package that will contain the specifications required to establish the design, construction, and operational performance standards for the project; and assistance with ranking offers and evaluation of proposals.	<input checked="" type="checkbox"/> Check if project performed with current firm	

**E. RESUMES OF KEY PERSONNEL PROPOSED FOR THIS CONTRACT**

*(Complete one Section E for each key person.)*

<b>12. NAME</b> <b>Jason Lau, P.E.</b>	<b>13. ROLE IN THIS CONTRACT</b> <b>Principal Engineer</b>	<b>14. YEARS EXPERIENCE</b>	
		a. <b>TOTAL</b> <b>33</b>	b. <b>WITH CURRENT FIRM</b> <b>26</b>
<b>15. FIRM NAME AND LOCATION</b> <i>(City and State)</i> <b>The Limtiaco Consulting Group, Inc. Honolulu, Hawai'i</b>			
<b>16. EDUCATION</b> <i>(Degree and Specialization)</i> <b>BS/1992/Civil Engineering</b>	<b>17. CURRENT PROFESSIONAL REGISTRATION</b> <i>(State and Discipline)</i> <b>HAWAI'I 1997/Civil Engineering (No. 9360)</b> <b>HAWAI'I 2023/NASSCO PACP &amp; MACP Certification</b> <b>HAWAI'I 2025/CCH DPP Certified Erosion and Sediment Control Plan Preparer</b> <b>HAWAI'I 2025/CCH DPP Certified Water Pollution Plan Preparer</b> <b>HAWAI'I 2025/EnviroCert Certified Professional in Erosion and Sediment Control</b>		
<b>18. OTHER PROFESSIONAL QUALIFICATIONS</b> <i>(Publications, Organizations, Training, Awards, etc.)</i> <b>American Council of Engineering Companies of Hawai'i</b> <b>American Public Works Association – Board of Directors, Past President, 2009-2014</b> <b>Hawai'i Water Environment Association</b> <b>Water Environment Federation</b>			

**19. RELEVANT PROJECTS**

(1) TITLE AND LOCATION <i>(City and State)</i>	(2) YEAR COMPLETED	
	PROFESSIONAL SERVICES	CONSTRUCTION (If Applicable)
<b>'Aiea 497 Production Well Environmental Assessment</b> <b>'Aiea, Hawai'i</b>	<b>On-going</b>	
<b>a.</b> (3) BRIEF DESCRIPTION <i>(Brief scope, size, cost, etc.)</i> AND SPECIFIC ROLE Principal Engineer for the preparation of an Environmental Assessment (EA) for the installation of a production well in the upper 'Aiea area, which includes installation of a control building, new pipeline, influent/effluent main upsizes, control valve assemblies, emergency pump connection, and appurtenances to improve operational ability to convey water from the 'Aiea system to the Honolulu 180' system. Duties include preparation of a Preliminary Engineering Analysis to evaluate the feasibility of the construction of the new well and analyze project requirements to the extent necessary for evaluation in the EA.	[ <input checked="" type="checkbox"/> ] Check if project performed with current firm	
<b>b.</b> (1) TITLE AND LOCATION <i>(City and State)</i> <b>Kea'au Zero Waste Facility</b> <b>Kea'au, Hawai'i</b>	<b>2018</b>	<b>N/A</b>
(3) BRIEF DESCRIPTION <i>(Brief scope, size, cost, etc.)</i> AND SPECIFIC ROLE Principal Engineer responsible for civil design services for the development of a new zero waste facility as part of the Agribusiness Development Corporation's initiative to expand their sustainable program of converting animal waste to product biofuel. Duties included preparation of construction documents, drainage report, and Erosion Control Report; project coordination; and services during bidding and construction.	[ <input checked="" type="checkbox"/> ] Check if project performed with current firm	
<b>c.</b> (1) TITLE AND LOCATION <i>(City and State)</i> <b>Malaekahana State Recreation Area (SRA) – Kahuku Section, Park Improvements</b> <b>La'ie, Hawai'i</b>	<b>2022</b>	<b>On-going</b>
(3) BRIEF DESCRIPTION <i>(Brief scope, size, cost, etc.)</i> AND SPECIFIC ROLE Principal Engineer to provide civil planning and design services to assess the condition of seven cabins and related infrastructure improvements at Malaekahana SRA. Responsible for the preparation of a site development planning report; demolition plans and specifications of existing cabins and auxiliary facilities; construction documents and construction cost estimates for new cabins, auxiliary facilities, and utilities; project coordination; and services during bidding and construction.	[ <input checked="" type="checkbox"/> ] Check if project performed with current firm	
<b>d.</b> (1) TITLE AND LOCATION <i>(City and State)</i> <b>DOT Maui District MS4 Program – Kahului Baseyard Improvements</b> <b>Kahului, Maui</b>	<b>2023</b>	<b>On-going</b>
(3) BRIEF DESCRIPTION <i>(Brief scope, size, cost, etc.)</i> AND SPECIFIC ROLE Principal Engineer for civil engineering and environmental planning services for MS4 Program improvements at the DOT Kahului Baseyard, including replacement of the non-operational wash rack, installation of photovoltaic systems on all existing buildings, and increasing the capacity and operational capability of the existing fueling station. Duties included civil engineering analysis for various concept designs for a wash rack system and PV equipment storage building; environmental planning services for the development of a new parking lot layout; preparation of construction documents; services during bidding and construction; and project coordination with subconsultants, client, and government agencies.	[ <input checked="" type="checkbox"/> ] Check if project performed with current firm	
<b>e.</b> (1) TITLE AND LOCATION <i>(City and State)</i> <b>Wahiawa Reclaimed Water Irrigation System</b> <b>Wahiawa, Hawai'i</b>	<b>On-going</b>	
(3) BRIEF DESCRIPTION <i>(Brief scope, size, cost, etc.)</i> AND SPECIFIC ROLE Principal Engineer for the design of a new wastewater reclaimed water irrigation system to deliver recycled water from the Wahiawa WWTP and raw water from Wahiawa Reservoir to the existing 3MG and 10MG reservoirs and a proposed 14 MG reservoir at Galbraith Farmland. Services include civil planning and preliminary engineering services for the interconnection of Agribusiness Development Corporation open air reservoirs at Galbraith Farmland, design of 20- and 24-inch transmission pipelines and grading at proposed valve boxes, and services during bidding and construction.	[ <input checked="" type="checkbox"/> ] Check if project performed with current firm	

**E. RESUMES OF KEY PERSONNEL PROPOSED FOR THIS CONTRACT**

*(Complete one Section E for each key person.)*

<b>12. NAME</b> <b>Kyle Kaneshiro, P.E.</b>	<b>13. ROLE IN THIS CONTRACT</b> <b>Principal Engineer</b>	<b>14. YEARS EXPERIENCE</b>	
		a. <b>TOTAL</b> <b>30</b>	b. <b>WITH CURRENT FIRM</b> <b>17</b>
<b>15. FIRM NAME AND LOCATION</b> <i>(City and State)</i> <b>The Limtiaco Consulting Group, Inc. Honolulu, Hawai'i</b>			
<b>16. EDUCATION</b> <i>(Degree and Specialization)</i> <b>BS/1995/Civil Engineering</b>	<b>17. CURRENT PROFESSIONAL REGISTRATION</b> <i>(State and Discipline)</i> <b>HAWAI'I 2001/Civil Engineering (No. 10268)</b> <b>HAWAI'I 2025/CCH DPP Certified Erosion and Sediment Control Plan Preparer</b> <b>HAWAI'I 2025/CCH DPP Certified Water Pollution Plan Preparer</b> <b>HAWAI'I 2025/CCH DPP Erosion and Sediment Control Plan Coordinator</b>		
<b>18. OTHER PROFESSIONAL QUALIFICATIONS</b> <i>(Publications, Organizations, Training, Awards, etc.)</i> <b>American Council of Engineering Companies of Hawai'i – Board of Directors + Past President, 2019-2025</b> <b>Hawai'i Water Environment Association</b> <b>Water Environment Federation</b>			

**19. RELEVANT PROJECTS**

	(1) TITLE AND LOCATION <i>(City and State)</i>	(2) YEAR COMPLETED	
		PROFESSIONAL SERVICES	CONSTRUCTION (If Applicable)
a.	<b>Isaac Kepo'okalani Hale Beach Park Improvements – FEMA</b> <b>Puna, Hawai'i Island</b>	<b>On-going</b>	
	(3) BRIEF DESCRIPTION <i>(Brief scope, size, cost, etc.)</i> AND SPECIFIC ROLE Principal Engineer to provide civil planning and design services to develop a park master plan and construction drawings to expand use areas at the existing Isaac Hale Beach Park and enhance existing amenities to increase usability and utility for the community. Improvements include on-site water system improvements; comfort station upgrades; on-site pedestrian access enhancements; parking improvements; generator building upgrades; cultural preservation enhancements; landscaping improvements; and construction of a new administrative support building, pavilions, and canoe building structure. Responsible for the preparation of a site development planning report, preparation of construction documents for the site improvements, obtaining necessary permits and environmental clearances, project coordination, participation in stakeholder meetings, and services during bidding and construction.	<input checked="" type="checkbox"/> Check if project performed with current firm	
b.	<b>Pohoiki Boat Ramp Dredging of Volcanic Debris and Hazard Mitigation</b> <b>Puna, Hawai'i Island</b>	<b>2024</b>	<b>On-going</b>
	(3) BRIEF DESCRIPTION <i>(Brief scope, size, cost, etc.)</i> AND SPECIFIC ROLE Principal Engineer responsible for planning, permitting, and design services to excavate and dredge volcanic debris and black sand from the entrance channel and turning basin for the Pohoiki Boat Ramp. Duties included preparation of a Pre-Design Letter Report with recommendations for dredging limits and depths, proposed hazard mitigation for erosion control, confirmation of required permits and agency approvals, and engineering analysis; preparation of construction drawings, technical specifications, and cost estimate for the selected alternative; project coordination; and services during bidding and construction.	<input checked="" type="checkbox"/> Check if project performed with current firm	
c.	<b>Engineering Services for Waimanalo Residential and Subsistence Agricultural Lots</b> <b>Waimanalo, Hawai'i</b>	<b>On-going</b>	
	(3) BRIEF DESCRIPTION <i>(Brief scope, size, cost, etc.)</i> AND SPECIFIC ROLE Principal Engineer for the development of 114 acres of Hawaiian Home Lands in Waimanalo into subsistence agricultural and residential lots for native Hawaiian beneficiaries. Duties include environmental planning and research; utility research and analysis; conceptual design options for subdivision layout, utility plan (water, wastewater, drainage, electrical, communication, and roadway), and mass grading plan; design of traffic calming improvements (speed tables, street signage, pavement markings, and curb ramp improvements); preparation of NPDES NOI Form C permit application; community outreach efforts including participation in community meetings and neighborhood board presentations; project coordination; and services during bidding and construction.	<input checked="" type="checkbox"/> Check if project performed with current firm	
d.	<b>Kalaniana'ole Highway Sewer System Improvements</b> <b>Honolulu, Hawai'i</b>	<b>On-going</b>	
	(3) BRIEF DESCRIPTION <i>(Brief scope, size, cost, etc.)</i> AND SPECIFIC ROLE Principal Engineer responsible for civil planning and design services for hydraulic improvements to the Kalaniana'ole Highway Trunk Sewer System. Duties include interagency coordination to develop a Scope of Work; public outreach services including conducting interviews with area residents and presentations at neighborhood board meetings; preparation of a Preliminary Engineering Report to investigate and evaluate alternatives, including a separate gravity sewer system, stand-alone pump station, and individual Low-Pressure Sewer Systems (LPSS); hydraulic evaluation; identification of necessary permits and clearances; preparation of construction drawings, technical specifications, and cost estimate for the selected alternative; services during bidding and construction; and coordination with project team and government agencies.	<input checked="" type="checkbox"/> Check if project performed with current firm	

**E. RESUMES OF KEY PERSONNEL PROPOSED FOR THIS CONTRACT**

*(Complete one Section E for each key person.)*

<b>12. NAME</b> <b>Jason Nakata, P.E.</b>	<b>13. ROLE IN THIS CONTRACT</b> <b>Environmental Planner</b>	<b>14. YEARS EXPERIENCE</b>	
		a. <b>TOTAL</b> <b>17</b>	b. <b>WITH CURRENT FIRM</b> <b>17</b>
<b>15. FIRM NAME AND LOCATION</b> <i>(City and State)</i> <b>The Lintiaco Consulting Group, Inc. Honolulu, Hawai'i</b>			
<b>16. EDUCATION</b> <i>(Degree and Specialization)</i> <b>BS/2008/Civil Engineering</b> <b>MBA/2017/Business Administration</b>		<b>17. CURRENT PROFESSIONAL REGISTRATION</b> <i>(State and Discipline)</i> <b>HAWAI'I 2017/Civil Engineering (No. 17843)</b>	
<b>18. OTHER PROFESSIONAL QUALIFICATIONS</b> <i>(Publications, Organizations, Training, Awards, etc.)</i> <b>American Council of Engineering Companies of Hawai'i</b> <b>American Planning Association</b> <b>American Society of Civil Engineers</b>			

**19. RELEVANT PROJECTS**

	(1) TITLE AND LOCATION <i>(City and State)</i>	(2) YEAR COMPLETED	
		PROFESSIONAL SERVICES	CONSTRUCTION (If Applicable)
a.	(1) TITLE AND LOCATION <i>(City and State)</i> <b>Isaac Kepo'okalani Hale Beach Park Improvements – FEMA</b> <b>Puna, Hawai'i Island</b>	<b>On-going</b>	CONSTRUCTION (If Applicable)
	(3) BRIEF DESCRIPTION <i>(Brief scope, size, cost, etc.)</i> AND SPECIFIC ROLE Environmental Planner to provide civil planning and design services to develop a park master plan and construction drawings to expand use areas at the existing Isaac Hale Beach Park and enhance existing amenities to increase usability and utility for the community. Improvements include on-site water system improvements; comfort station upgrades; on-site pedestrian access enhancements; parking improvements; generator building upgrades; cultural preservation enhancements; landscaping improvements; and construction of a new administrative support building, pavilions, and canoe building structure. Responsible for the preparation of a site development planning report and obtaining necessary permits and environmental clearances.	<input checked="" type="checkbox"/> Check if project performed with current firm	
b.	(1) TITLE AND LOCATION <i>(City and State)</i> <b>P&amp;E Work for Waiawa 228 Reservoirs Environmental Assessment</b> <b>Waipahu, Hawai'i</b>	<b>2024</b>	<b>N/A</b>
	(3) BRIEF DESCRIPTION <i>(Brief scope, size, cost, etc.)</i> AND SPECIFIC ROLE Environmental Planner responsible for the preparation of an Environmental Assessment (EA) and Public Infrastructure Map (PIM) for three proposed reservoirs (8.5 MGD total capacity), 30-inch influent main, 30-inch effluent main, access road, and appurtenances in the Waiawa Ridge to improve operational ability to convey water from the 228 system to the Honolulu 180 System 42-inch main. Project duties included preparing all necessary Environmental Clearances including incidental and related technical work associated with the preparation, assimilation, and publication of the Draft and Final EA (2023) in accordance with HRS Chapter 343; preparing a PIM Revision Application, inclusive of consultation with agencies, civic groups, and individuals; attendance at public informational meetings; and project management services.	<input checked="" type="checkbox"/> Check if project performed with current firm	
c.	(1) TITLE AND LOCATION <i>(City and State)</i> <b>'Aiea 497 Production Well Environmental Assessment</b> <b>'Aiea, Hawai'i</b>	<b>On-going</b>	CONSTRUCTION (If Applicable)
	(3) BRIEF DESCRIPTION <i>(Brief scope, size, cost, etc.)</i> AND SPECIFIC ROLE Environmental Planner for the preparation of an Environmental Assessment (EA) and Public Infrastructure Map (PIM) for the installation of a production well in the upper 'Aiea area, which includes installation of a control building, new pipeline, influent/effluent main upsizes, control valve assemblies, emergency pump connection, and appurtenances to improve operational ability to convey water from the 'Aiea system to the Honolulu 180' system. Project duties included preparing all necessary Environmental Clearances including incidental and related technical work associated with the preparation, assimilation, and publication of the Draft and Final EA in accordance with HRS Chapter 343; preparing a PIM Revision Application, inclusive of consultation with agencies, civic groups, and individuals; and attendance at public informational meetings.	<input checked="" type="checkbox"/> Check if project performed with current firm	
d.	(1) TITLE AND LOCATION <i>(City and State)</i> <b>Malaekahana State Recreation Area (SRA) – Kahuku Section, Park Improvements</b> <b>La'ie, Hawai'i</b>	<b>2022</b>	<b>On-going</b>
	(3) BRIEF DESCRIPTION <i>(Brief scope, size, cost, etc.)</i> AND SPECIFIC ROLE Environmental Planner to provide civil planning and design services to assess the condition of seven cabins and related infrastructure improvements at Malaekahana SRA. Responsible for obtaining necessary permit applications and exemptions including NPDES, NOI Form C, Shoreline Setback Determination Application, and Special Management Area Major Permit.	<input checked="" type="checkbox"/> Check if project performed with current firm	
e.	(1) TITLE AND LOCATION <i>(City and State)</i> <b>Statewide Storm Water Management Program – Environmental Assessment for Kakoi Base Yard Improvements</b> <b>Honolulu, Hawai'i</b>	<b>2014</b>	<b>N/A</b>
	(3) BRIEF DESCRIPTION <i>(Brief scope, size, cost, etc.)</i> AND SPECIFIC ROLE Environmental Planner responsible for the preparation of an Environmental Assessment (EA), pursuant to HRS Chapter 343, for the proposed O'ahu District Office Base Yard Canopy Extension and Maintenance Storage Building project. Project duties encompass all facets of the EA process, including agency consultation and public outreach, preparation and publication of the Draft and Final EA, and identifying applicable permits required for the project. The Final EA was published in 2014.	<input checked="" type="checkbox"/> Check if project performed with current firm	

<b>F. EXAMPLE PROJECTS WHICH BEST ILLUSTRATE PROPOSED TEAM'S QUALIFICATIONS FOR THIS CONTRACT</b> <i>(Present as many projects as requested by the agency, or 10 projects, if not specified. Complete one Section F for each project.)</i>		20. EXAMPLE PROJECT KEY NUMBER  <b>1</b>
21. TITLE AND LOCATION <i>(City and State)</i> <b>Isaac Kepe'okalani Hale Beach Park Improvements - FEMA</b> <b>Puna, Hawai'i Island</b>	22. YEAR COMPLETED	
	PROFESSIONAL SERVICES <b>On-going</b>	CONSTRUCTION <i>(if applicable)</i>

**23. PROJECT OWNER'S INFORMATION**

a. PROJECT OWNER <b>County of Hawai'i</b> <b>Department of Parks and Recreation</b>	b. POINT OF CONTACT NAME <b>Mr. James Komata</b>	c. POINT OF CONTACT TELEPHONE NUMBER <b>(808) 961-8531</b>
---	---	---

24. BRIEF DESCRIPTION OF PROJECT AND RELEVANCE TO THIS CONTRACT *(Include scope, size, and cost)*



Existing comfort station at Isaac Hale Beach Park

*Planning and Design Fee - \$1,435,000*

Scope

Civil planning and design services to expand use areas at the Isaac Hale Beach Park and enhance existing amenities to increase usability and utility for the community.

Relevant Project Elements

- √ Master Planning
- √ Permit Applications
- √ Environmental Assessment
- √ Construction Documents
- √ Public Meetings and Outreach

TLCG is currently developing a park master plan and construction drawings for the Isaac Hale Beach Park on Hawai'i Island. The project will provide on-site water system improvements, on-site pedestrian access, paved parking improvements, cultural preservation enhancement, and landscape improvements; return the comfort station to full functionality and provide showers for beachgoers; replace the electrical system for safe nighttime use and security purposes; and design a new park administrative support building, large pavilion, several smaller picnic style pavilions, and canoe building structure.

Duties include the preparation of a site development planning report, preparation of construction documents for the site improvements, obtaining necessary permits and environmental clearances, publication of the Draft and Final Environmental Assessments in accordance with HRS Chapter 343, project coordination, participation in stakeholder meetings, and services during bidding and construction.

**Project Status:** Draft Environmental Assessment and Pre-Final Design submitted.

**25. FIRMS FROM SECTION C INVOLVED WITH THIS PROJECT**

a.	(1) FIRM NAME EnviroServices & Training Center, LLC	(2) FIRM LOCATION <i>(City and State)</i> Honolulu, Hawai'i	(3) ROLE Environmental Planning, Hazardous Materials Management
b.	(1) FIRM NAME	(2) FIRM LOCATION <i>(City and State)</i>	(3) ROLE
c.	(1) FIRM NAME	(2) FIRM LOCATION <i>(City and State)</i>	(3) ROLE
d.	(1) FIRM NAME	(2) FIRM LOCATION <i>(City and State)</i>	(3) ROLE
e.	(1) FIRM NAME	(2) FIRM LOCATION <i>(City and State)</i>	(3) ROLE

<b>F. EXAMPLE PROJECTS WHICH BEST ILLUSTRATE PROPOSED TEAM'S QUALIFICATIONS FOR THIS CONTRACT</b> <i>(Present as many projects as requested by the agency, or 10 projects, if not specified. Complete one Section F for each project.)</i>	20. EXAMPLE PROJECT KEY NUMBER  <b>2</b>
---	--

21. TITLE AND LOCATION <i>(City and State)</i>  <b>Pohoiki Boat Ramp Dredging of Volcanic Debris and Hazard Mitigation</b>  <b>Puna, Hawai'i Island</b>	22. YEAR COMPLETED	
	PROFESSIONAL SERVICES  <b>2024</b>	CONSTRUCTION <i>(If applicable)</i>  <b>On-going</b>

**23. PROJECT OWNER'S INFORMATION**

a. PROJECT OWNER  <b>State of Hawai'i</b> <b>Department of Land and Natural Resources</b>	b. POINT OF CONTACT NAME  <b>Mr. Finn McCall, P.E.</b>	c. POINT OF CONTACT TELEPHONE NUMBER  <b>(808) 587-3250</b>
--	--	---

24. BRIEF DESCRIPTION OF PROJECT AND RELEVANCE TO THIS CONTRACT *(Include scope, size, and cost)*



Volcanic debris from the 2018 eruption land-locked the State-operated Pohoiki Boat Ramp

*Planning and Design Fee - \$781,000*

Scope

Environmental planning and permitting, design, and public outreach services for the dredging of volcanic debris surrounding the Division of Boating and Ocean Recreation's (DOBOR) Pohoiki Boat Ramp in the Puna District.

Relevant Project Elements

- √ Public Outreach
- √ Feasibility Study and Analysis
- √ Permit Applications
- √ Environmental Assessment
- √ Construction Documents

Due to the 2018 Kilauea Lower East Rift Zone volcanic eruption, ocean access was cut off from the Puna District causing substantial financial hardship to the local Puna community. TLCG is responsible for providing community outreach, environmental planning and permitting, and design services to excavate and dredge volcanic debris and black sand from the entrance channel and turning basin for the Pohoiki Boat Ramp.

Public Outreach

TLCG will provide continuous public outreach services throughout the duration of the project with key stakeholders, including State and County elected officials, community groups, and residents. Various community group meetings will be conducted and incorporation of the group's concerns into the design will be analyzed and considered.

Planning

TLCG was responsible for developing a Pre-Design Letter Report with recommendations for dredging limits and depths, proposed hazard mitigation for erosion control, confirmation of all required permits and agency approvals, engineering analysis, and construction cost estimate.

Environmental Permitting

TLCG was responsible for the preparation of all necessary environmental clearances associated with the preparation, assimilation, and publication of the Final Environmental Assessment (2023) in accordance with HRS Chapter 343. The following permit applications and exemptions were obtained for this project:

- Clean Water Act (CWA) 404 U.S. Army Corps of Engineers (USACE) permit
- NPDES, NOI Form C, authorizing discharges of stormwater associated with construction activities and stockpiling permits
- HRS 6E SHPD consultation
- Grading Permit from the County of Hawai'i

Design

The selected alternative is to excavate and dredge a navigable channel through a portion of the existing volcanic debris. Debris removal will be through on-land excavation and dragline dredging with the excavated material being distributed across surrounding debris, neighboring properties, and lava land mass. Design services included preparation of construction documents, project coordination, and services during bidding and construction.

**Project Status:** Construction expected to be completed in 2025.

**25. FIRMS FROM SECTION C INVOLVED WITH THIS PROJECT**

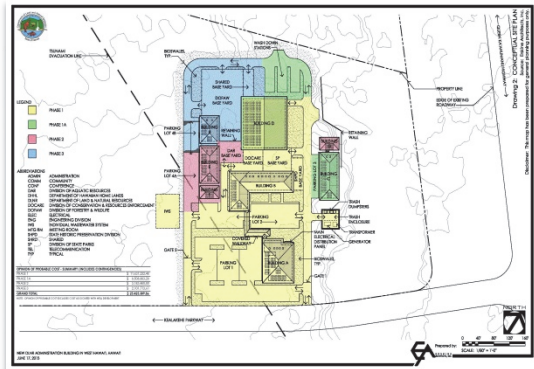
a.	(1) FIRM NAME Cultural Surveys Hawai'i, Inc.	(2) FIRM LOCATION <i>(City and State)</i> Kailua, Hawai'i	(3) ROLE Archaeology
b.	(1) FIRM NAME AECOS, Inc.	(2) FIRM LOCATION <i>(City and State)</i> Kane'ohe, Hawai'i	(3) ROLE Biological Reconnaissance and Water Quality Investigations

<b>F. EXAMPLE PROJECTS WHICH BEST ILLUSTRATE PROPOSED TEAM'S QUALIFICATIONS FOR THIS CONTRACT</b> <i>(Present as many projects as requested by the agency, or 10 projects, if not specified. Complete one Section F for each project.)</i>		20. EXAMPLE PROJECT KEY NUMBER  <b>3</b>
21. TITLE AND LOCATION <i>(City and State)</i>  <b>New Administration and Baseyard Facility in West Hawai'i for DLNR</b>  <b>West Hawai'i, Hawai'i Island</b>	22. YEAR COMPLETED	
	PROFESSIONAL SERVICES  <b>2021</b>	CONSTRUCTION <i>(if applicable)</i>  <b>N/A</b>

**23. PROJECT OWNER'S INFORMATION**

a. PROJECT OWNER  <b>State of Hawai'i</b> <b>Department of Land and Natural Resources</b>	b. POINT OF CONTACT NAME  <b>Mr. Fred Erskine, AIA</b>	c. POINT OF CONTACT TELEPHONE NUMBER  <b>(808) 955-3373</b>
--	--	---

24. BRIEF DESCRIPTION OF PROJECT AND RELEVANCE TO THIS CONTRACT *(Include scope, size, and cost)*



Conceptual design of new facility

*Planning Fee - \$191,000*

Scope

Environmental planning services for the new administration and baseyard facility for the DLNR in West Hawai'i.

Relevant Project Elements

- ✓ Environmental Assessment
- ✓ Permit Applications

The DLNR is in need of consolidating a number of division services which are currently spread out in various locations throughout Hawai'i County. The DLNR envisions a new facility which will combine the staff administrative offices and base yard services into a single location.

TLCG was responsible for preparing all necessary environmental clearances, including incidental and related technical work associated with the preparation, assimilation, and publication of the Draft and Final Environmental Assessments (2021) in accordance with HRS Chapter 343.

**25. FIRMS FROM SECTION C INVOLVED WITH THIS PROJECT**

a.	(1) FIRM NAME <b>AECOS, Inc.</b>	(2) FIRM LOCATION <i>(City and State)</i> <b>Kane'ohe, Hawai'i</b>	(3) ROLE <b>Biological Reconnaissance and Water Quality Investigations</b>
b.	(1) FIRM NAME	(2) FIRM LOCATION <i>(City and State)</i>	(3) ROLE
c.	(1) FIRM NAME	(2) FIRM LOCATION <i>(City and State)</i>	(3) ROLE
d.	(1) FIRM NAME	(2) FIRM LOCATION <i>(City and State)</i>	(3) ROLE
e.	(1) FIRM NAME	(2) FIRM LOCATION <i>(City and State)</i>	(3) ROLE

<b>F. EXAMPLE PROJECTS WHICH BEST ILLUSTRATE PROPOSED TEAM'S QUALIFICATIONS FOR THIS CONTRACT</b> <i>(Present as many projects as requested by the agency, or 10 projects, if not specified. Complete one Section F for each project.)</i>	20. EXAMPLE PROJECT KEY NUMBER  <b>4</b>
---	--

21. TITLE AND LOCATION <i>(City and State)</i> <b>Kea'au Zero Waste Facility</b> <b>Kea'au, Hawai'i</b>	22. YEAR COMPLETED	
	PROFESSIONAL SERVICES <b>2018</b>	CONSTRUCTION <i>(if applicable)</i> <b>N/A</b>

**23. PROJECT OWNER'S INFORMATION**

a. PROJECT OWNER <b>State of Hawai'i</b> <b>Agribusiness Development Corporation</b>	b. POINT OF CONTACT NAME <b>Mr. Colyn Lee, AIA</b>	c. POINT OF CONTACT TELEPHONE NUMBER <b>(808) 738-7684</b>
--	---	---

24. BRIEF DESCRIPTION OF PROJECT AND RELEVANCE TO THIS CONTRACT *(Include scope, size, and cost)*



Future site of the Zero Waste Conversion Facility

*Planning and Design Fee - \$242,000*

Scope

Preparation of an environmental assessment and civil design plans for the development of a new zero waste facility to be owned and operated by the Agribusiness Development Corporation (ADC) on Hawai'i Island.

Relevant Project Elements

- ✓ Environmental Assessment
- ✓ Construction Documents

The zero waste facility is part of the ADC's initiative to expand their sustainable program of converting animal waste to product biofuel. The project includes construction of a new 3,000 sf pre-manufactured building with a new driveway connection, accessible parking stall, access aisle, chain link fence, manual gates, and supporting utilities (water, sewer, stormwater).

Duties included the preparation of a Final Environmental Assessment in accordance with HRS 343 (2018), including an Archaeological Inventory Survey and Cultural Impact Statement; preparation of construction drawings, technical specifications, cost estimate, drainage report, and erosion control report; preparation of NPDES permit; project coordination; and services during bidding and construction.

**25. FIRMS FROM SECTION C INVOLVED WITH THIS PROJECT**

	(1) FIRM NAME	(2) FIRM LOCATION <i>(City and State)</i>	(3) ROLE
a.	Cultural Surveys Hawai'i, Inc.	Kailua, Hawai'i	Archaeology
b.	AECOS, Inc.	Kane'ohe, Hawai'i	Biological Reconnaissance and Water Quality Investigations
c.	(1) FIRM NAME	(2) FIRM LOCATION <i>(City and State)</i>	(3) ROLE
d.	(1) FIRM NAME	(2) FIRM LOCATION <i>(City and State)</i>	(3) ROLE
e.	(1) FIRM NAME	(2) FIRM LOCATION <i>(City and State)</i>	(3) ROLE

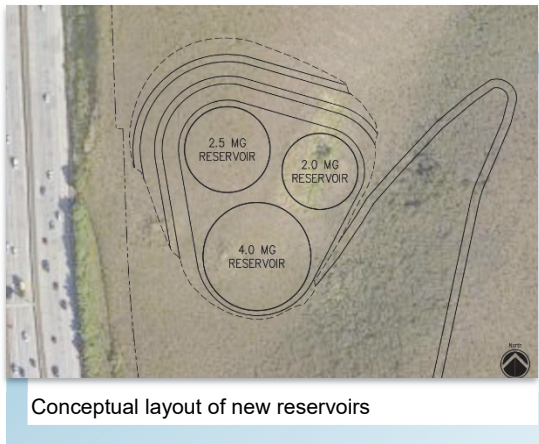
<b>F. EXAMPLE PROJECTS WHICH BEST ILLUSTRATE PROPOSED TEAM'S QUALIFICATIONS FOR THIS CONTRACT</b> <i>(Present as many projects as requested by the agency, or 10 projects, if not specified. Complete one Section F for each project.)</i>	20. EXAMPLE PROJECT KEY NUMBER  <b>5</b>
---	--

21. TITLE AND LOCATION <i>(City and State)</i>  <b>P&amp;E Work for Waiawa 228 Reservoirs Environmental Assessment</b>  <b>Waipahu, Hawai'i</b>	22. YEAR COMPLETED	
	PROFESSIONAL SERVICES  <b>2024</b>	CONSTRUCTION <i>(if applicable)</i>  <b>N/A</b>

**23. PROJECT OWNER'S INFORMATION**

a. PROJECT OWNER  <b>Board of Water Supply</b> <b>City and County of Honolulu</b>	b. POINT OF CONTACT NAME  <b>Mr. Dominic Dias, P.E.</b>	c. POINT OF CONTACT TELEPHONE NUMBER  <b>(808) 748-5928</b>
--	---	---

24. BRIEF DESCRIPTION OF PROJECT AND RELEVANCE TO THIS CONTRACT *(Include scope, size, and cost)*



*Planning Fee - \$400,000*

Scope

Preparation of all necessary Environmental Clearances including related technical work associated with the preparation, assimilation, and publication of an Environmental Assessment (EA) and Public Infrastructure Map (PIM) for three proposed reservoirs in the Waiawa Ridge area.

Relevant Project Elements

- √ Project Management
- √ Environmental Assessment
- √ Public Meetings and Outreach

The Honolulu Board of Water Supply (BWS) proposes to install three reservoirs (8.5 MGD total capacity); 3,700 linear feet (LF) of 30-inch influent main; 3,700 LF of 30-inch effluent main; 3,700 LF of 12-foot-wide asphaltic concrete access road; and drainage, landscaping, utilities, and other appurtenances in the Waiawa Ridge area to improve operational ability to convey water from the 228 system to the Honolulu 180 System 42-inch main.

**Project Management**

Project management services for the duration of the project included communication and coordination with BWS, scheduling, budget tracking, invoicing, preparation of monthly status reports, and meeting with BWS to coordinate planning alternatives.

**Environmental Assessment**

TLCG was responsible for the preparation of all necessary environmental clearances, including incidental and related technical work associated with the preparation, assimilation, and publication of the Draft and Final Environmental Assessments (EA) in accordance with HRS Chapter 343. The Final EA was published in 2023.

**PIM Application**

TLCG prepared a PIM Revision Application for the new reservoir facility in accordance with City and County of Honolulu PIM requirements, inclusive of consultation with agencies, civic groups, and individuals. Assistance at public informational meetings was also required, including a Neighborhood Board meeting and PIM presentation.

**25. FIRMS FROM SECTION C INVOLVED WITH THIS PROJECT**

a.	(1) FIRM NAME Cultural Surveys Hawai'i, Inc.	(2) FIRM LOCATION <i>(City and State)</i> Kailua, Hawai'i	(3) ROLE Archaeology
b.	(1) FIRM NAME AECOS, Inc.	(2) FIRM LOCATION <i>(City and State)</i> Kane'ohe, Hawai'i	(3) ROLE Biological Reconnaissance, Water Quality Investigations
c.	(1) FIRM NAME	(2) FIRM LOCATION <i>(City and State)</i>	(3) ROLE
d.	(1) FIRM NAME	(2) FIRM LOCATION <i>(City and State)</i>	(3) ROLE
e.	(1) FIRM NAME	(2) FIRM LOCATION <i>(City and State)</i>	(3) ROLE

<b>F. EXAMPLE PROJECTS WHICH BEST ILLUSTRATE PROPOSED TEAM'S QUALIFICATIONS FOR THIS CONTRACT</b> <i>(Present as many projects as requested by the agency, or 10 projects, if not specified. Complete one Section F for each project.)</i>	20. EXAMPLE PROJECT KEY NUMBER  <b>6</b>
---	--

21. TITLE AND LOCATION <i>(City and State)</i> <b>'Aiea 497 Production Well Environmental Assessment</b> <b>'Aiea, Hawai'i</b>	22. YEAR COMPLETED	
	PROFESSIONAL SERVICES <b>On-going</b>	CONSTRUCTION <i>(if applicable)</i>

**23. PROJECT OWNER'S INFORMATION**

a. PROJECT OWNER <b>Board of Water Supply</b> <b>City and County of Honolulu</b>	b. POINT OF CONTACT NAME <b>Mr. Dominic Dias, P.E.</b>	c. POINT OF CONTACT TELEPHONE NUMBER <b>(808) 748-5928</b>
--	---	---

24. BRIEF DESCRIPTION OF PROJECT AND RELEVANCE TO THIS CONTRACT *(Include scope, size, and cost)*



*Planning Fee - \$300,000*

Scope

Preparation of an Environmental Assessment for the installation of a production well to convey water from the 'Aiea 497 system to the Honolulu 180 system.

Relevant Project Elements

- ✓ Feasibility Study and Analysis
- ✓ Environmental Assessment
- ✓ Public Meetings and Outreach

The BWS proposes to install a production well in the upper 'Aiea area, which includes installation of a control building, new pipeline, influent/effluent main upsizes, control valve assemblies, emergency pump connection, and appurtenances to improve operational ability to convey water from the 'Aiea system to the Honolulu 180 system. Project scope consists of the preparation of a Preliminary Engineering Analysis to evaluate the feasibility of construction the new production well and analyze project requirements to the extent necessary for evaluation in the Environmental Assessment (EA).

**Environmental Assessment**

TLCG is responsible for the preparation of all necessary environmental clearances, including incidental and related technical work associated with the preparation, assimilation, and publication of the Draft and Final EA in accordance with HRS Chapter 343. The EA will also include applicable information specified in the latest guidelines from the Environmental Review Program (ERP) under the State of Hawai'i Office of Planning and Sustainable Development.

**PIM Application**

TLCG will prepare a PIM Revision Application for the new production well in accordance with City and County of Honolulu PIM requirements, inclusive of consultation with agencies, civic groups, and individuals. Assistance at public informational meetings is also required, including a Neighborhood Board meeting and PIM presentation.

**25. FIRMS FROM SECTION C INVOLVED WITH THIS PROJECT**

a.	(1) FIRM NAME	(2) FIRM LOCATION <i>(City and State)</i>	(3) ROLE
	Cultural Surveys Hawai'i, Inc.	Kailua, Hawai'i	Archaeology
b.	AECOS, Inc.	Kane'ohe, Hawai'i	Biological Reconnaissance, Water Quality Investigations
c.	(1) FIRM NAME	(2) FIRM LOCATION <i>(City and State)</i>	(3) ROLE
d.	(1) FIRM NAME	(2) FIRM LOCATION <i>(City and State)</i>	(3) ROLE
e.	(1) FIRM NAME	(2) FIRM LOCATION <i>(City and State)</i>	(3) ROLE

<b>F. EXAMPLE PROJECTS WHICH BEST ILLUSTRATE PROPOSED TEAM'S QUALIFICATIONS FOR THIS CONTRACT</b> <i>(Present as many projects as requested by the agency, or 10 projects, if not specified. Complete one Section F for each project.)</i>	20. EXAMPLE PROJECT KEY NUMBER  <b>7</b>
---	--

21. TITLE AND LOCATION <i>(City and State)</i>  <b>Engineering Services for Waimanalo Residential and Subsistence Agricultural Lots</b>  <b>Waimanalo, Hawai'i</b>	22. YEAR COMPLETED	
	PROFESSIONAL SERVICES  <b>On-going</b>	CONSTRUCTION <i>(If applicable)</i>

**23. PROJECT OWNER'S INFORMATION**

a. PROJECT OWNER  <b>State of Hawai'i</b> <b>Department of Hawaiian Home Lands</b>	b. POINT OF CONTACT NAME  <b>Ms. Sara Okuda, P.E.</b>	c. POINT OF CONTACT TELEPHONE NUMBER  <b>(808) 730-0318</b>
---	---	---

24. BRIEF DESCRIPTION OF PROJECT AND RELEVANCE TO THIS CONTRACT *(Include scope, size, and cost)*



*Planning and Design Fee - \$5,655,000*

Scope

Civil planning, environmental permitting, and design services for the development of 114 acres of Hawaiian Home Lands in Waimanalo into subsistence agricultural and residential lots for native Hawaiian beneficiaries.

Relevant Project Elements

- √ Feasibility Study and Analysis
- √ Environmental Assessment    √ Construction Documents
- √ Public Meetings and Outreach

The Waikupanaha Agricultural Lots project area had previously been subdivided into five lots and is currently being utilized primarily for stabling activities. TLCG is responsible for consolidating existing parcels and re-subdividing them into subsistence agricultural lots.

The Waimanalo Homestead Development project area was recently conveyed to the Department of Hawaiian Home Lands and is currently operating as Waimanalo Country Farms. TLCG is responsible for subdividing the lot into subsistence agricultural and residential lots.

**Planning**

TLCG investigated the feasibility of developing and subdividing the two project areas. Duties included environmental planning and research, utility research and analysis, preparation of preliminary site layouts and construction cost estimates, Preliminary Analysis Report preparation, project coordination, and community outreach efforts including participation in community meetings and beneficiary discussions and presentations to the Waimanalo Homestead Association and Neighborhood Board.

**Environmental Permitting**

TLCG was responsible for the preparation of all necessary environmental clearances associated with the preparation, assimilation, and publication of the Final Environmental Assessment (2020) in accordance with HRS Chapter 343 for the Waikupanaha Agricultural Lots. The project scope also included overseeing the preparation of a Phase I Environmental Site Assessment by our environmental subconsultant.

**Design**

Design includes conceptual design options for subdivision layout, utility plan (water, wastewater, drainage, electrical, communication, and roadway), and mass grading plan. Services include preparation of construction drawings, technical specifications, cost estimate, and NPDES permit; project coordination; and services during bidding and construction.

Traffic calming improvements were also designed and constructed along Nakini and Huli Streets. Improvements included speed tables, street signage, pavement markings, and curb ramp improvements to address community pedestrian safety concerns.

**Project Status:** Final EA and Preliminary Design submitted.

**25. FIRMS FROM SECTION C INVOLVED WITH THIS PROJECT**

a.	(1) FIRM NAME EnviroServices & Training Center, LLC	(2) FIRM LOCATION <i>(City and State)</i> Honolulu, Hawai'i	(3) ROLE Environmental Planning, Hazardous Materials Management
b.	(1) FIRM NAME	(2) FIRM LOCATION <i>(City and State)</i>	(3) ROLE
c.	(1) FIRM NAME	(2) FIRM LOCATION <i>(City and State)</i>	(3) ROLE
d.	(1) FIRM NAME	(2) FIRM LOCATION <i>(City and State)</i>	(3) ROLE

<b>F. EXAMPLE PROJECTS WHICH BEST ILLUSTRATE PROPOSED TEAM'S QUALIFICATIONS FOR THIS CONTRACT</b> <i>(Present as many projects as requested by the agency, or 10 projects, if not specified. Complete one Section F for each project.)</i>		20. EXAMPLE PROJECT KEY NUMBER  <b>8</b>
21. TITLE AND LOCATION <i>(City and State)</i> <b>Malaekahana State Recreation Area (SRA) – Kahuku Section, Park Improvements</b> <b>La'ie, Hawai'i</b>	22. YEAR COMPLETED	
	PROFESSIONAL SERVICES <b>2022</b>	CONSTRUCTION <i>(if applicable)</i> <b>On-going</b>

**23. PROJECT OWNER'S INFORMATION**

a. PROJECT OWNER <b>State of Hawai'i</b> <b>Department of Land and Natural Resources</b>	b. POINT OF CONTACT NAME <b>Ms. Valerie Suzuki, P.E.</b>	c. POINT OF CONTACT TELEPHONE NUMBER <b>(808) 587-0275</b>
--	---	---

24. BRIEF DESCRIPTION OF PROJECT AND RELEVANCE TO THIS CONTRACT *(Include scope, size, and cost)*



*Planning and Design Fee - \$1,394,000*  
*Construction Cost - \$9,300,000*

Scope

Civil planning and design services to upgrade the camping experience at Malaekahana SRA, Kahuku Section.

Relevant Project Elements

- √ Master Planning
- √ Permit Applications
- √ Environmental Assessment
- √ Construction Documents
- √ Agency Coordination
- √ Public Meetings and Outreach

TLCG was responsible for preparing site development planning report; environmental assessment; demolition plans of existing cabins and auxiliary facilities; and design of new cabins, comfort station, satellite restrooms, pot washing stations, campgrounds, parking lots, and utilities at the Malaekahana SRA, Kahuku Section.

The project was originally intended to replace illegal cesspools; however, the scope of work quickly broadened to address new problems identified during initial site investigations. The project focus shifted to a comprehensive condition assessment of all property facilities, including the seven cabins that were observed to be uninhabitable due to structural integrity and presence of hazardous materials.

During the planning phase of the project, TLCG prepared cabin replacement recommendations along with a list of necessary

environmental clearances and permits including a shoreline certification and Special Management Area permit. An Archaeological Inventory Survey was prepared to comply with State Historic Preservation Division (SHPD) requirements because the cabins were potentially historically significant. Cultural impact assessments and biological surveys were completed for the Environmental Assessment (EA) in accordance with HRS Chapter 343. The Final EA was published in 2016.

In addition to designing the recommended facility improvements, TLCG designed new civil and electrical infrastructure to support the re-designed property. Infrastructure included wastewater collection and treatment, water, drainage, grading, roadways, walking paths, ADA-accessible parking stalls, communication, and power.

**Project Status:** Construction expected to be completed in 2025.

**25. FIRMS FROM SECTION C INVOLVED WITH THIS PROJECT**

	(1) FIRM NAME	(2) FIRM LOCATION <i>(City and State)</i>	(3) ROLE
a.	EnviroServices & Training Center, LLC	Honolulu, Hawai'i	Environmental Planning, Hazardous Materials Management
b.	(1) FIRM NAME	(2) FIRM LOCATION <i>(City and State)</i>	(3) ROLE
c.	(1) FIRM NAME	(2) FIRM LOCATION <i>(City and State)</i>	(3) ROLE
d.	(1) FIRM NAME	(2) FIRM LOCATION <i>(City and State)</i>	(3) ROLE
e.	(1) FIRM NAME	(2) FIRM LOCATION <i>(City and State)</i>	(3) ROLE

<b>F. EXAMPLE PROJECTS WHICH BEST ILLUSTRATE PROPOSED TEAM'S QUALIFICATIONS FOR THIS CONTRACT</b> <i>(Present as many projects as requested by the agency, or 10 projects, if not specified. Complete one Section F for each project.)</i>	20. EXAMPLE PROJECT KEY NUMBER  <b>9</b>
---	--

21. TITLE AND LOCATION <i>(City and State)</i>  <b>Maui Office Annex Building</b>  <b>Wailuku, Maui</b>	22. YEAR COMPLETED	
	PROFESSIONAL SERVICES  <b>2016</b>	CONSTRUCTION <i>(if applicable)</i>  <b>2019</b>

**23. PROJECT OWNER'S INFORMATION**

a. PROJECT OWNER  <b>State of Hawai'i</b> <b>Department of Land and Natural Resources</b>	b. POINT OF CONTACT NAME  <b>Mr. Brandon Kim, P.E.</b>	c. POINT OF CONTACT TELEPHONE NUMBER  <b>(808) 587-0248</b>
--	--	---

24. BRIEF DESCRIPTION OF PROJECT AND RELEVANCE TO THIS CONTRACT *(Include scope, size, and cost)*



*Planning and Design Fee - \$905,000*  
*Construction Cost - \$7,850,000*

**Scope**

Civil planning services to evaluate the existing structure and infrastructure conditions of an aging administration building and design services for site improvements and the construction of a new office building.

Relevant Project Elements

- √ Feasibility Study and Analysis
- √ Environmental Assessment
- √ Construction Documents
- √ Permit Applications

**Planning**

TLCG prepared a Concept Plan Report to evaluate the existing structure of the building and parking requirements; assess infrastructure capacities, constraints, and deficiencies; identify easements, permit requirements, and building code and non-conformance violations; provide site and space planning recommendations; and evaluate the feasibility of repair/rehabilitation vs. total replacement.

**Environmental Assessment**

The project scope also included the preparation of all necessary environmental clearances, including incidental and related technical work associated with the preparation, assimilation, and publication of the Draft and Final Environmental Assessments (EA) in accordance with HRS Chapter 343. The Final EA was published in 2014.

**Design**

TLCG's recommended alternative was to demolish the existing building and construct a new building with improved on-site infrastructure. Design included the construction of a single-story, slab-on-grade structure; retaining wall; new curbs and asphalt concrete paving and pavement; security fencing and entry gates; and areas for solid waste receptacle, bicycle storage, and covered boat storage. New utilities included installation and connection of a new water meter; construction of new fire hydrant; extension of sewer main and construction of new lateral sewer connection; water, sewer, and electrical service to the building; and closure of onsite cesspool per DOH requirements.

Project Highlight

The Planning Report integrated the needs of multiple DLNR division offices into a design that satisfies individual functionality, space, and personnel requirements.

**25. FIRMS FROM SECTION C INVOLVED WITH THIS PROJECT**

a.	(1) FIRM NAME	(2) FIRM LOCATION <i>(City and State)</i>	(3) ROLE
b.	(1) FIRM NAME	(2) FIRM LOCATION <i>(City and State)</i>	(3) ROLE
c.	(1) FIRM NAME	(2) FIRM LOCATION <i>(City and State)</i>	(3) ROLE
d.	(1) FIRM NAME	(2) FIRM LOCATION <i>(City and State)</i>	(3) ROLE
e.	(1) FIRM NAME	(2) FIRM LOCATION <i>(City and State)</i>	(3) ROLE

<b>F. EXAMPLE PROJECTS WHICH BEST ILLUSTRATE PROPOSED TEAM'S QUALIFICATIONS FOR THIS CONTRACT</b> <i>(Present as many projects as requested by the agency, or 10 projects, if not specified. Complete one Section F for each project.)</i>		20. EXAMPLE PROJECT KEY NUMBER  <b>10</b>
21. TITLE AND LOCATION <i>(City and State)</i> <b>DOT Maui District MS4 Program – Kahului Baseyard Improvements</b> <b>Kahului, Maui</b>	22. YEAR COMPLETED	
	PROFESSIONAL SERVICES <b>2022</b>	CONSTRUCTION <i>(If applicable)</i> <b>On-going</b>

**23. PROJECT OWNER'S INFORMATION**

a. PROJECT OWNER <b>State of Hawai'i</b> <b>Department of Transportation – Highways Div</b>	b. POINT OF CONTACT NAME <b>Mr. Keith Miyashiro</b>	c. POINT OF CONTACT TELEPHONE NUMBER <b>(808) 483-7290</b>
---	--	---

24. BRIEF DESCRIPTION OF PROJECT AND RELEVANCE TO THIS CONTRACT *(Include scope, size, and cost)*



*Planning and Design Fee - \$255,000*  
*Construction Cost - \$1,900,000*

Scope

Civil engineering and environmental planning services to make various MS4 Program improvements at the DOT Kahului Baseyard.

Relevant Project Elements

- ✓ Feasibility Study and Analysis
- ✓ Permit Applications
- ✓ Environmental Assessment
- ✓ Construction Documents

TLCG provided civil engineering and environmental planning services for MS4 Program improvements at the DOT Kahului Baseyard, including replacement of the existing non-operational wash rack, installation of photovoltaic systems on all existing buildings, and increasing the capacity and operational capability of the existing fueling station.

Duties included civil engineering analysis (including site layout, traffic flow, sewer, and drainage) for various concept designs for a wash rack system to wash DOT vehicles (trailers and large construction equipment) and a PV equipment storage building. Environmental planning services for the development of a new parking lot layout included preparation of an Environmental

Assessment (EA) in accordance with HRS Chapter 343 and SMA Permit (SM1), and project coordination with subconsultants, client, and government agencies. The Final EA was published in 2023.

The selected improvements include electrical upgrades and replacement of two existing fuel tanks with aboveground fuel storage tanks. Design services included preparation of construction drawings, technical specifications, and opinion of probable cost; coordination with design team; and services during bidding and construction.

**Project Status:** Construction expected to be completed in 2025.

**25. FIRMS FROM SECTION C INVOLVED WITH THIS PROJECT**

	(1) FIRM NAME	(2) FIRM LOCATION <i>(City and State)</i>	(3) ROLE
a.	AECOS, Inc.	Kane'ohe, Hawai'i	Biological Reconnaissance, Water Quality Investigations
b.	(1) FIRM NAME	(2) FIRM LOCATION <i>(City and State)</i>	(3) ROLE
c.	(1) FIRM NAME	(2) FIRM LOCATION <i>(City and State)</i>	(3) ROLE
d.	(1) FIRM NAME	(2) FIRM LOCATION <i>(City and State)</i>	(3) ROLE
e.	(1) FIRM NAME	(2) FIRM LOCATION <i>(City and State)</i>	(3) ROLE



---

## H. ADDITIONAL INFORMATION

---

30. PROVIDE ANY ADDITIONAL INFORMATION REQUESTED BY THE AGENCY. ATTACH ADDITIONAL SHEETS AS NEEDED.

### Company Background

The Limtiaco Consulting Group, Inc. (TLCG) is the consulting company established by Mr. Felix B. Limtiaco, a former Director of the Department of Wastewater Management of the City and County of Honolulu. Founded in 1997, TLCG specializes in planning, design, and construction services for water, wastewater, stormwater, and water reuse infrastructure. The company is also experienced in general civil engineering projects.

---

#### **TLCG is certified as a Minority Business Enterprise by the Western Regional Minority Supplier Development Council**

---

In 2016, the U.S. Small Business Administration selected TLCG principals as the Small Business Person of the Year for the City and County of Honolulu. The prized SBA award recognizes the best of the small business community.

### Experience and Professional Qualifications

TLCG has built a reputation for openness and honesty with regulators at the Federal, State, and local levels. We also invest the time to meet and discuss projects early and often with regulators in order to build a strong rapport. This strategy of direct engagement allows us to have frank conversations with regulators, which can lead to out-of-the-box strategies that benefit our client, the regulators, and the environment.

Our method of project evaluation involves identifying potential environmental issues and regulatory requirements as early as possible during project development. Early identification of these issues results in superior project delivery. For example, consideration of endangered species during alternatives analysis may favor one alternative over another. Another example is that identification of historic resources at a project site during design could allow engineers to alter their design to avoid impacts to the historic resource altogether. TLCG encourages constant communication between planners, designers, and construction managers in order to facilitate these types of solutions.

Our broad range of expertise, strategy of openness, honesty and engagement, and early evaluation method has taken many projects from planning to construction efficiently while minimizing complications.

### ENVIRONMENTAL PLANNING

TLCG is highly capable in environmental planning and has successfully prepared environmental documents in accordance with State and Federal requirements.

---

**Published 25 EAs with OEQC**

---

TLCG has prepared environmental documents on the local, State, and Federal levels, and has worked closely with accepting agencies to obtain key environmental clearances.

- ✓ HRS Chapter 343 compliance
- ✓ HRS Chapter 6E Consultation, National Historic Preservation Act, Section 106
- ✓ NEPA Categorical Exclusion
- ✓ HRS 195D Consultation, Endangered Species Act, Section 7
- ✓ Coastal Zone Management Consistency Review
- ✓ Shoreline Setback Variance
- ✓ Army Corps Section 404 and Section 10 Permits
- ✓ Clean Water Act, Section 401 Water Quality Certification
- ✓ NPDES Notice of Intent and Individual Permits
- ✓ Stream Channel Alteration Permit
- ✓ Conservation District Use Permit
- ✓ Special District Permit
- ✓ Special Management Area permit (City and County of Honolulu, County of Hawai'i, County of Kaua'i, County of Maui, and State Office of Planning)

### PERMITTING

TLCG has completed a wide range of permits, clearances, and certification applications.

- ✓ NPDES
- ✓ SWPPPs
- ✓ trenching
- ✓ street usage
- ✓ noise variance
- ✓ grading, grubbing, and stockpiling
- ✓ dewatering, hydrotesting
- ✓ Stream Channel Alteration Permit
- ✓ Conservation District Use Permit
- ✓ Special District Permit

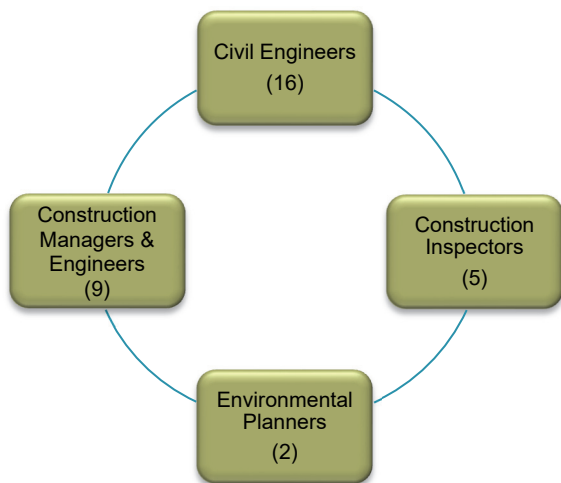
Through 28 years of business, TLCG has grown its staff of complementing professional engineering services. The company has maintained an average of 43 employees over the past five years.

---

**\* Sixteen licensed civil engineers \***  
**\* U.S. Green Building Council member \***

---

TLCG's greatest asset is its people. Comprised of motivated, experienced, creative, and practical professionals, TLCG is eager to solve the toughest engineering problems. Ian Arakaki is the Principal-in-Charge.



**Ian Arakaki, P.E., CCM**



Mr. Arakaki has 29 years of experience on civil, sanitary, and environmental projects. He is responsible for providing program management services for the Board of Water Supply, the City and County of Honolulu's Department of Environmental Services, and Hawai'i American Water. As a direct result of his exemplary management

skill and ability to deliver quality end results, TLCG has remained the preferred consultant for the private utility for the past 23 years.

**Jason Lau, P.E.**



Mr. Lau has 33 years of experience on civil and sanitary engineering projects spanning Federal, State, City, and private sector projects in Hawai'i and California. His projects involve various civil engineering disciplines with an emphasis on site development, utilities, soil erosion control, and roadway infrastructure.

Mr. Lau leads a staff of 14 engineers and is currently managing design contracts totaling more than \$44M. His experience includes coordination, design, feasibility studies, preliminary engineering reports, and preparation of plans, specifications, and cost estimates.

**Kyle Kaneshiro, P.E.**



Mr. Kaneshiro has 30 years of civil and sanitary engineering experience with an emphasis on site development and wastewater system design. He has an extensive background in the development of municipal and private facilities including pump stations and treatment plants, municipal and private utilities, drainage and stream studies, and government permits.

Mr. Kaneshiro specializes in utility infrastructure for site development projects, including subdivisions, commercial and industrial developments, schools, resorts, recreational facilities, and private residences.

**Jason Nakata, P.E.**



Mr. Nakata has 17 years of experience in environmental planning. His duties include the preparation of environmental assessments; planning reports; zoning and land use approvals; discretionary permit approvals (SMA permits, CDUP, shoreline approvals); and County, State, and Federal resource agency reviews (SHPD, US Fish and Wildlife).

**Past Performance on Contracts**

TLCG has established a successful track record and positive reputation for providing high levels of performance with government and private sector clients. TLCG management completes projects meeting stringent performance criteria in a practical, timely, and cost-efficient manner. Clients routinely reward TLCG with new projects, reflecting confidence in professional judgment, value, and commitment to customer service. By collaborating with clients, TLCG is able to develop project-specific criteria to solve the toughest problems.

**CERTIFICATE OF APPRECIATION**

The firm's largest client, the City and County of Honolulu, Department of Environmental Services, Division of Wastewater Engineering and Construction (formerly DDC – Wastewater Division), recognizes one outstanding consultant each year with a Certificate of Appreciation. TLCG was awarded this certificate, which acknowledges exceptional engineering services, in 2006.

**ENGINEERING EXCELLENCE**

TLCG received an Honor Award at the 2010 Engineering Excellence Awards Competition held by the American Council of Engineering Companies – Hawai'i. The award is for superior engineering services provided by the firm for the State of Hawai'i, Department of Land and Natural Resources (DLNR) and Ka'a'awa residents whose homes were in imminent danger of collapse following the 40 days of rain in 2006. *"The Limtiaco Consulting Group designed a project which was on time and came in under budget. The ability to do those things, while adhering to a compressed design schedule, is the hallmark of a technically competent firm,"* said Carty Chang, Chief Engineer of the DLNR, Engineering Division.

**BEST WATER/WASTEWATER/ENVIRONMENTAL PROJECT**

TLCG's Pearl City Force Main Slip-Lining Repair project for the City and County of Honolulu, Department of Design and Construction was awarded the Best Water/Wastewater /Environmental Project at the 2013 ASCE Hawai'i Section Outstanding Civil Engineering Achievement Awards Banquet. This project was spurred by consecutive pipeline breaks within a 250-foot section of 30-inch and 42-inch dual force mains. The project was declared an emergency because the public's health and safety were in imminent danger due to the large service area associated with the force mains. This project also won an Excellence Award at the 2014 Engineering Excellence Awards Competition.

## **BEST SMALL PROJECT**

The Mana Drag Racing Strip Improvements project located in Waimea, Kaua'i was awarded the Best Small Project Award at the 2015 ASCE Hawai'i Section Outstanding Civil Engineering Achievement Awards Banquet. TLCG performed civil design and construction management services for the State of Hawai'i, Department of Land and Natural Resources for the resurfacing and reconstruction of the NHRA-sanctioned drag strip to provide a safe and functional facility for motor sports on Kaua'i.

## **BEST SUSTAINABILITY PROJECT**

The Wahiawa Police Station NPDES Small MS4 Permit Program Improvements project was awarded the Best Sustainability Project Award at the 2017 ASCE Hawai'i Section Outstanding Civil Engineering Achievement Awards Banquet. This project was one of the first projects in Hawai'i solely developed to improve stormwater quality; it was completed prior to the issuance of local guidelines on Low Impact Design or structural BMP standards. TCG earned an Honor Award for this same project at the 2018 Engineering Excellence Awards Competition.

## **HONOR AWARD**

TLCG received an Honor Award at the 2024 Engineering Excellence Awards Competition held by the American Council of Engineering Companies – Hawai'i for the Wailua Sewage Pump Station No. 1 Rehabilitation project located in Lihu'e, Kaua'i. The County of Kaua'i faced a public health and environmental problem when one of the pump stations stopped functioning, leaving this aging facility at risk of wastewater spills. TCG designed a facility retrofit to expand the wet well access and accommodate two new pumps. Even amid the COVID-19 pandemic, this project was completed under a strict time constraint to ensure the public's health and safety.

## **Quality Control / Capacity to Accomplish Work in the Required Time**

TLCG's work quality is based on the wisdom and engagement of experienced principals and project managers. Successful project management begins with the development of a concise and objective-oriented scope of work and is maintained through effective communication with the client, stakeholders, and project team. TCG employs tried-and-true project control practices to track productivity, maintain costs, and meet or exceed project milestones, while ensuring a high-quality work product. TCG engineers have more than 350 years of combined project management and engineering experience.

TLCG maintains five guiding philosophies to ensure project success:

- 1. Quality, above all else**
- 2. Service capacity**
- 3. Effective communication**
- 4. Resourceful employees**
- 5. Redundancy**

## **QUALITY, ABOVE ALL ELSE**

TLCG's driving philosophy is its commitment to quality engineering services. The company recruits diligent and talented employees, committed to successful projects and happy clients. TCG understands commitment to quality customer service is more important than profitability. TCG engineers genuinely care about their projects and clients.

## **SERVICE CAPACITY**

TLCG maintains a database to track current staff workload relative to upcoming project milestones. This tool allows TCG engineers to produce 40 to 45 quality hours of work each week. Practical employee expectations promote healthy work-life balance, resulting in happy and dedicated employees. In addition to managing the workload for existing employees, TCG routinely seeks talent before the critical need arises. This philosophy ensures an ample amount of engineering capacity while proactively controlling the quality of each employee added to the company.

## **EFFECTIVE COMMUNICATION**

TLCG invests in relationships through effective communication. TCG engineers are empowered to create and cultivate professional relationships with clients and approving agencies to ensure project success. TCG engineers are encouraged to communicate both good and bad news because it's the right thing to do. Effective communication – which TCG recognizes requires a tremendous amount of listening – builds trust and relationships.

## **CROSS-TRAINING**

TLCG services are generally comprised of three disciplines: Planning, Design, and Construction Management. TCG invests in training employees across the three disciplines because adaptable engineers are better prepared to solve difficult problems. TCG engineers are prepared with broader experiences, armed with deeper appreciation of the various phases of a project life cycle. This core philosophy also allows TCG to use engineers interchangeably to manage dynamic workloads. TCG staff members are prepared to temporarily assist with critical deadlines, thereby increasing TCG service capacity.

## **REDUNDANCY**

TLCG builds redundancies for each key employee. This company philosophy ensures that clients and projects will continue to be serviced at high levels even when unanticipated events occur. Employee redundancy practices were exercised when the company was just four years old. In 2001, president and founder Felix Limtiaco died unexpectedly. TCG was not only able to survive the tragedy, but the company continued to thrive because of its reliable employee redundancy practices.

## **Conflicts of Interest**

TLCG does not have any conflicts of interest in performing services for the County of Hawai'i.

**Client References**

The following list provides a sample of TLCG clients.

- Dr. Roger Babcock, Jr., Director  
Department of Environmental Services  
City and County of Honolulu  
Phone: (808) 768-3486
- Mr. Ernest Lau, Manager and Chief Engineer  
Board of Water Supply  
City and County of Honolulu  
Phone: (808) 748-5061
- Mr. Lee Mansfield, District Manager  
Hawai'i American Water  
Phone: (808) 394-1285
- Mr. Tim Trang, Chief  
Civil Division  
Department of Design and Construction  
City and County of Honolulu  
Phone: (808) 768-8838
- Mr. Donald Fujimoto, Chief  
Wastewater Management Division  
Department of Public Works  
County of Kaua'i  
Phone: (808) 241-4083

---

**I. AUTHORIZED REPRESENTATIVE**  
*The foregoing is a statement of facts.*

31. SIGNATURE



32. DATE

**June 30, 2025**

33. NAME AND TITLE

**Ian Y. Arakaki, Principal**

