

County of Hawai'i

Civil Defense

NOTICE TO PROVIDERS OF PROFESSIONAL SERVICES
for fiscal year 2025-2026, beginning July 1, 2025

Letter of Interest and Statements of Qualifications for CD.4) Safety Engineering/General Physical Science *(Emergency Management)*

Prepared for:
Mr. Talmadge Magno, Civil Defense Administrator
County of Hawai'i
920 Ululani Street
Hilo, Hawai'i 96720

June 30, 2025



letter of interest



111 S. King Street
Suite 170
Honolulu, HI 96813
808.523.5866
www.g70.design

June 30, 2025

Mr. Talmadge Magno, Administrator
Civil Defense
County of Hawai'i
920 Ululani Street
Hilo, HI 96720

**Subject: Statement of Qualifications & Letter of Interest
Civil Defense, County of Hawai'i for Fiscal Year 2025-2026**

Dear Mr. Magno:

G70 is pleased to express interest in providing professional services to the Civil Defense for the Fiscal Year 2025-2026 in the following categories:

CD.4) Safety Engineering / General Physical Science (Emergency Management)

Established in 1971, G70 is Hawai'i's largest full service multi-discipline design firm providing integrated services for sustainable development in architecture, civil engineering, planning and environment, geographic information systems, technology, and interior design. Our team brings a collective high level of talent unique in our approach and broad thinking from typical engineering firms. G70's team will:

- ✓ **Create Value** – understanding our client, culture and community to design innovative solutions that deliver a successful project on time, and on budget.
- ✓ **Provide a “One Stop Shop” of Skilled Professionals** - collaborative and multidiscipline team of professionals including engineers, planners, architects, interior designers, information technologists, cultural specialists, software engineers, GIS technicians, graphic designers, asset managers, and communications personnel.
- ✓ **Be Culturally Relevant in Design and Project Management** – years of experience and involvement with the local culture, community and government agencies allow us to deliver successful projects.
- ✓ **Promote Sustainable Principles** – delivering solutions that consider the context of the project using a cross discipline, life cycle perspective to integrate and protect resources and the community.
- ✓ **Leverage Technology** – knowledge and ability to utilize technological tools to provide efficient and valued added service.

1. The name of the firm or person, contact information including email address, the principal place of business, and location of all of its offices:

Name of firm: Group 70 International dba G70
Firm Address: 111 S. King Street, Suite 170
Honolulu, HI 96813

Contact Person: Mark Kāwika McKeague, AICP, President
Email Address: kawikam@g70.design
Phone number: (808) 523-5866

2. The age of the firm and its average number of employees over the past five years:

G70 was founded in 1971. We have averaged 100 employees over the past five years and we currently have 105 employees.

3. The education, training, and qualifications of the individual, or if a firm, its key employees in accordance with HRS 103D-304 and/or the professional and scientific occupation series contained in the United States Office of Personnel Managements' Qualifications Standards Handbook:

Please see Resumes of Key Personnel

4. A list of recent projects and the names of up to five clients who may be contacted, including at least two for whom services were rendered during the preceding year:

- State of Hawai'i Department of Transportation CAD Migration
- CNMI State Standard Mitigation Plan
- DHHL Census Assistance and Land Inventory
- City & County Road Maintenance Software
- Hawai'i MRS Japan Civil Aviator Bureau
- Alapai Joint Traffic Management & Emergency Operations Center
- Chanta'an, Pongsona Post Storm Assessment
- City and County of Honolulu Oahu Coastal Evacuation Planning
- City and County of Honolulu Emergency Operations Center
- CNMI Emergency Operations Center

Client References		
Name	Organization	Phone Number
Ms. Catherine Taschner	City and County of Honolulu – Department of Land Management	(808) 768-4271
Mr. R. Kalani Fronda	Hawai'i State Department of Hawaiian Home Lands	(808) 620-9500
Mr. John R. Condrey	City and County of Honolulu - Facilities Division, Department of Design & Construction	(808) 768-8468
Mr. Milton Yoshimoto	U.S. Army Corps of Engineers	(808) 835-4004
Mr. Barry Usagawa	City and County of Honolulu, Honolulu Board of Water Supply	(808) 748-5900

5. Any promotional or descriptive literature which the individual or firm desires to submit.

We have provided supporting data for G70 to include:

- Company Profile
- Key Personnel Resumes
- Project Profiles

Civil Defense, County of Hawai'i
LOI and SOQ for Fiscal Year 2025-2026
June 30, 2025
Page 3 of 3

We appreciate your consideration of our firm for the above listed category. Should you have any questions, please contact me at (808) 523-5866 or by email at kawikam@g70.design.

Sincerely,

A handwritten signature in black ink, appearing to read 'Mark Kāwika McKeague', with a long horizontal flourish extending to the right.

Mark Kāwika McKeague, AICP
President, Principal Planner
Director of Cultural Planning

company profile

about g70

FULL SERVICE

Established in 1971, G70 is Hawai'i's largest full service multi-disciplined design firm providing integrated services for sustainable development in architecture, interior design, civil engineering, and planning & environmental services. We have specific expertise in design for resort communities, residential projects, educational and medical facilities, mixed-use commercial ventures, utilities and roadway infrastructures, and all phases of master planning for major land holdings.

CREATING VALUE

Based in Honolulu, G70 is staffed with over 100 full-time professionals, including: licensed architects, interior designers, civil engineers, planners, technical specialists, and other support personnel. The firm is on the forefront of sustainable design practices with 25 LEED (Leadership in Energy and Environmental Design) accredited professionals in all areas of service.

CULTURALLY RELEVANT

G70 is about stewardship. Our work begins with understanding our client, the host culture of each project, and the surrounding community. We work with communities to create designs that not only best serve the people, but also incorporate the cultural, historical and environmental aspects of the land.

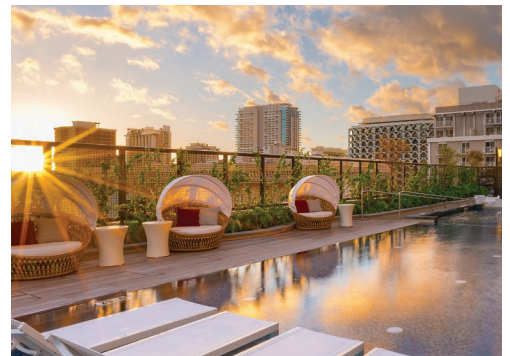
SUSTAINABLE DESIGNS

Sustainable principles cross all disciplines in project development from planning to design, integrating land resource management and cultural heritage with cutting edge sustainable technology. G70 offers sustainable design methods and tools to plan, build, and monitor the utilities and infrastructure of a project site. We provide asset management resources to maintain, secure, and optimize operating costs for land owners and developers.

TECHNOLOGY

G70 is progressive in its use and application of design software to enhance visualization and bring efficiency to the design process. Our current list of software being utilized is:

- Autodesk Revit
- Autodesk AutoCAD
- Autodesk Civil 3D
- Autodesk Construction Cloud / BIM 360
- Autodesk InRoads
- Autodesk Forma
- Arc GIS
- Bluebeam
- Sketchup Pro
- Adobe Photoshop
- Adobe Illustrator
- Adobe InDesign
- Lumion
- Enscape
- Twinmotion
- Cove.Tool
- Rhino
- Grasshopper
- Google Earth Pro



G70 services

ARCHITECTURE

G70 designs architecture that represent the lifestyles of communities and respect the natural landscape surrounding each project. Our emphasis on cultural context, honoring traditional values, combined with contemporary innovation and planning of sustainable environments creates harmonious, memorable designs for our future.



CIVIL ENGINEERING

Civil Engineering Consulting Services include the full range of services for a civil consulting firm. Our capabilities are broadened significantly with the overlapping services and abilities of G70, including Planning and Environmental Services, Land-Use Permitting, Architecture, Sustainable Development, GIS and Geospatial Services, and Asset Management.



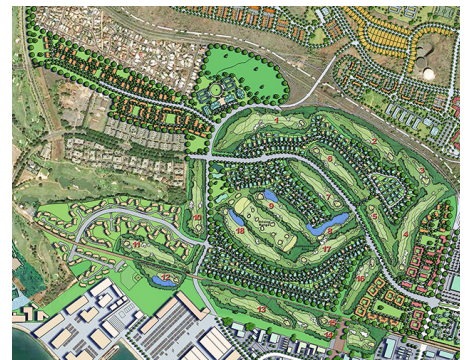
INTERIOR DESIGN

We believe that interior spaces should have a timeless quality and compliment the architectural style of its environment. Our team includes architects specializing in interior design. We offer custom designed finishes, furniture and architectural elements that offer signature details to enhance our client's individual style.



PLANNING & ENVIRONMENT

G70 provides comprehensive services to meet the challenges in the planning of communities, regions and the preservation of land resources. We engage the community in the process, assess the land, and prepare the necessary documents to expedite the due diligence process in a timely manner.



sustainable design

APPROACH

HONOR & INTEGRATE

With a deep understanding of an area's culture, heritage, and history at the onset of the design process, G70 is able to create distinctive, award-winning environments, richly appealing, harmonious and increasing in value over time. This is the foundation of good planning and design.

RESPECT & UNDERSTAND

We are committed to sustainable design principles, approaching each project with in-depth research of the site, to understand its environmental context, geological and topographical features, wind and solar characteristics, and historical and cultural background. We provide innovative GIS and 3D visualization to assist in planning, design and decision making.

PLAN & MAINTAIN

G70 offers sustainable design methods and tools to plan, build, and monitor the utilities and infrastructure of a project site. With GIS capabilities and state-of-the-art software, we provide asset management resources to maintain, secure, and optimize operating costs for developers.

LEAD FUTURE DESIGN

Our mission is to foresee a sustainable future now: to initiate, plan, design and build the best-in-class projects that demonstrate leadership in the global sustainability theater.



sustainable design

INNOVATION

EXPERTISE

G70 is on the cutting edge of sustainable development, recognizing the importance and impact of built environments of all types and sizes on individual lives, whole communities, and the entire planet. The firm's resources include a growing number of in-house LEED AP architects, planners, and interior designers working strategically with our clients and partners.

LEED SERVICES

- Pre-evaluation: identifying economically viable LEED compliance
- Certification: processing and documenting a project through design and construction
- Post-Certification: providing project asset management to ensure long term performance
- Water Efficiency Improvement Assessment
- Credit Products & Technologies Specification
- Credit Innovation & Design programming

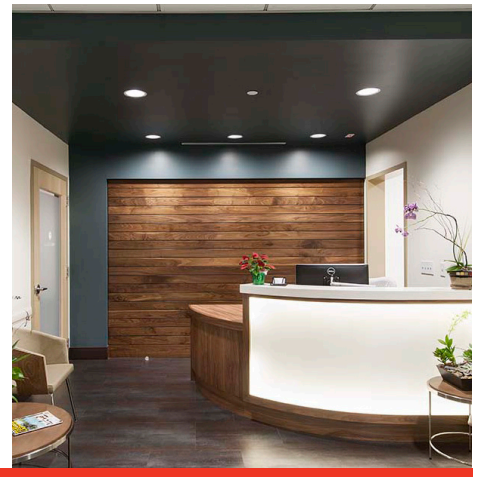
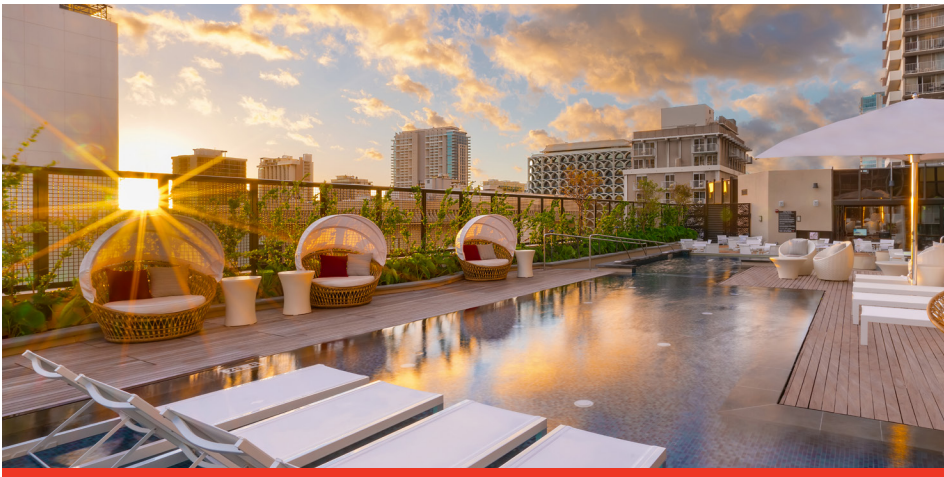
ACCOUNTABILITY

Our Sustainable Development Division created a proprietary methodology to map specific LEED components such as potable water consumption, graywater utilization, energy consumption, carbon footprint, waste generation, and open space. Following certification, G70 will monitor the ongoing performance of LEED certified projects. This innovative process ensures that the LEED building performs as designed throughout its life.



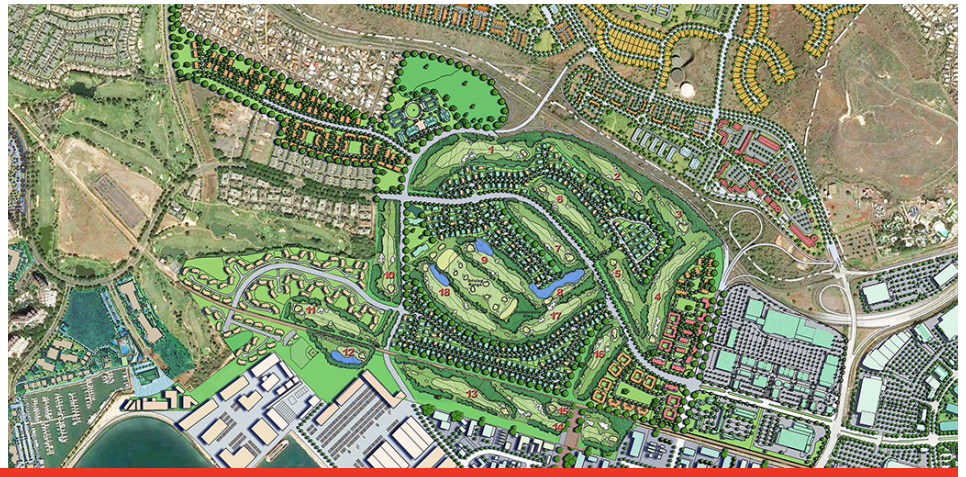
select client list

- Alexander & Baldwin
- Actus Lend Lease, LLC
- Aeko Hawai'i
- American Savings & Loan Association
- Amfac Corporation
- Armstrong Builders
- Azabu USA Corporation
- Bank of America
- Bank of Hawai'i
- BHP Gas Company
- Black River Energy, LLC
- Blackacre Institutional Capital Mgt, LLC
- Blackstone
- Brookfield Homes Hawai'i, Inc.
- California Institute of Technology
- CBRE
- Chaminade University of Honolulu
- Chartres Lodging Group, LLC
- City and County of Honolulu
- CM&D International, Inc.
- Coconut Plantation Holdings, LLC
- Consuelo Foundation
- County of Hawai'i
- Daiei USA
- Department of Business, Economic Development & Tourism (DBEDT)
- Department of Defense Education Activity (DoDEA)
- State Department of Transportation Airport Division
- State of Hawai'i Department of Hawaiian Home Lands (DHHL)
- State of Hawai'i Department of Land & Natural Resources (DLNR)
- Dole Foods, Incorporated
- EAH Housing
- Elleair Hawai'i, Inc.
- First Hawaiian Bank
- Forest City
- Flintridge Partners
- Gay & Robinson, Inc.
- Government of French Polynesia
- Grosvenor International
- Halekulani
- Haseko (Hawai'i), Inc.
- Hawai'i Baptist Academy
- Hawai'i Health Systems Corporation
- Hawai'i Reserves, Inc.
- Hawai'i Pacific Health
- Hawai'i Pacific University
- Hawaiian Electric Industries
- Hawaiian Telephone Company
- Hilton Worldwide
- Hilton Grand Vacation Club
- H MART Companies, Inc.
- Hōkūli'a
- Honolulu Board of Water Supply
- Host Hotels and Resorts, Inc.
- Hunt Building Company, Ltd.
- Hyatt Vacation Ownership, Inc.
- 'Iolani School
- Iwasaki Group, Japan
- JRANSA
- Kaiser Permanente Hawai'i
- Kamehameha Schools
- Kāne'ohe Ranch Co. Ltd.
- Kapalua Land Company
- Kapolei Property Development, LLC
- Kaua'i County
- Kaua'i Economic Development Board
- Kaua'i Community Federal Credit Union
- Ke Kailani Development, LLC
- Kisco Senior Living
- Kona Heights, LLC



select client list

- Kuakini Medical Center
- Kualoa Ranch
- Kuilima Development Company
- Kupu Hawai'i
- Kyo-ya Company, Ltd.
- Landmark Hotels
- Lockheed Martin
- Marianist Center of Hawai'i
- Marine Corps Forces, Pacific (MARFORPAC)
- Marriott Corporation
- Marriott Vacation Club International
- Maui County
- Maui County Employees Federal Credit Union
- Maui Land and Pineapple Co.
- Metropolitan Life Insurance Co.
- Monarch Group
- NAVFAC Pacific
- NEC Telenetwox, Ltd.
- Obayashi Hawai'i Corporation
- Oceanic Properties, Incorporate
- Oceanside Partners
- Ohana Real Estate Investors LLC
- Otaka Corporation
- OTO Development
- Outrigger Enterprises
- Pacific Resources, Incorporated
- PacMar, Incorporated
- PBS Hawai'i
- Po'ipu Beach Villas, LLC.
- Prince Resorts Hawaii
- Princess Hotels International, Inc.
- PRM Realty, Inc.
- Prudential Real Estate
- Sea Life Park
- Sentul City
- Servco Pacific
- Shimizu Corporation
- Shin Yang Co., Malaysia
- Shipman Company
- Shiraishi Shokai, Okinawa
- Southern Pacific Communications
- Special Olympics Hawai'i
- Starwood Captial Group, LLC
- Systems International, Inc., Japan
- The Contemporary Museum
- The Estate of James Campbell
- The MacNaughton Group
- The Queen Emma Foundation
- The Queen's Health Systems
- The Resort Group
- The Resort Partners
- The Salvation Army
- The Sullivan Family of Companies
- Theo H. Davies Properties, Inc.
- Timbers Resorts
- Tosei Shoji, Incorporated, Japan
- Tri-Mark Pacific Homes
- Trinity Investments, LLC
- UH Institute of Astronomy
- University of Hawai'i
- University of Hawai'i Federal Credit Union
- University of the Nations
- US Army Corps of Engineers
- VMS Realty, Incorporated
- Victoria Ward Limited
- Wai'alaie Country Club
- Woodridge Capital
- Wyndham Worldmark Kihei
- Wyndham Vacation Resorts, Inc.



honors & awards

CBRE Honolulu Offices

- National Association of Industrial and Office Properties (NAIOP) Hawai'i Renovation Project - Under 40,000 SF, Kūkulu Hale Award, 2015

Central Union Preschool & Kindergarten Phase I

- National Association of Industrial and Office Properties (NAIOP) Hawai'i Nonprofit, Kūkulu Hale Award, 2013

Concrete, Masonry, and Metal Structures Repair and Maintenance Manual for Historic Facilities at Joint Base Pearl Harbor-Hickam for Commander, Navy Region Hawai'i

- Historic Hawai'i Foundation (HHF) Preservation Commendation Award, 2018

Department of Accounting and General Services No. 1 Capital Place Exterior Renovation (Hemmeter Building)

- Historic Hawai'i Foundation (HHF) Preservation Award, 2019

Department of Hawaiian Home Lands Kaupuni Village

- American Institute of Architects (AIA) Honolulu Mayor's Choice Award, 2011
- United States Green Building Council (USGBC) Outstanding Green Project Team Award, 2011
- American Planning Association (APA) Hawai'i Innovation In Planning: Best Practices for Sustainability Award, 2010



G70 Interiors Office

- American Society of Interior Designers (ASID) Overall Grand Design Award, 2006
- American Society of Interior Designers (ASID) Commercial Design Award of Excellence, 2006
- American Society of Interior Designers (ASID) Green Sustainable Design Award of Excellence, 2006
- Building Industry Association (BIA) Hawai'i Overall Grand Award, 2006
- Building Industry Association (BIA) Hawai'i Built Green Grand Award, 2006
- National Association of Industrial and Office Properties (NAIOP) Hawai'i Renovation, Kūkulu Hale Award, 2006

G70 First & Second Floor Sustainable Renovations

- Historic Hawai'i Foundation (HHF) Preservation Commendation Award, 2010

Guam USMC Installation Appearance Plan

- American Society of Landscape Architects (ASLA) Planning & Analysis Honor Award, 2012

Ha'ikū Stairs Study

- American Planning Association (APA) Hawai'i, Cultural/Historic Preservation Award, 2020

Hanauma Bay Nature Preserve

- American Planning Association (APA) Hawai'i Outstanding Planning Project, 2004
- American Institute of Architects (AIA) Honolulu Award of Merit, 2003
- National Association of Industrial and Office Properties (NAIOP) Hawai'i Award of Merit, 2003
- Building Industry Association (BIA) Hawai'i Renaissance Award, 2003
- Hawai'i Tourism Authority (HTA) Keep it Hawai'i, Kahili Award, 2003
- American Society of Landscape Architects (ASLA) Award of Merit, 2003



honors & awards

Hale Ola, Wailea

- American Society of Interior Designers (ASID) Award of Excellence, 2004

Hale Pu'u, Wailea

- American Society of Interior Designers (ASID) Award of Excellence, 2004

Harry and Jeanette Weinberg Ho'okupu Center

- International Interior Design Association (IIDA) Hawai'i Serve Award, 2019

Hawai'i Baptist Academy

- American Institute of Architects (AIA) Honolulu Mayor's Choice Award, 2007
- Building Industry Association (BIA) Hawai'i Grand Award Hawai'i BuiltGreen, 2007
- National Association of Industrial and Office Properties (NAIOP) Hawai'i Kūkulu Hale Award, 2007

Hawai'i Baptist Academy High School - Phase I

- General Contractors Association (GCA) of Hawai'i Award of Merit, 2014
- American Institute of Architects (AIA) Honolulu Merit Award, 2014
- National Association of Industrial and Office Properties (NAIOP) Hawai'i Nonprofit, Kūkulu Hale Award, 2015

Hawai'i Film Studio

- American Council of Engineering Companies of Hawai'i (ACECH) Award of Honor, 2019

Hawai'i State Art Museum Sculpture Garden

- Historic Hawai'i Foundation (HHF) Preservation Honor Award, 2014
- American Institute of Architects (AIA) Honolulu Mayor's Choice Award, 2013
- American Institute of Architects (AIA) Honolulu Award of Merit, 2013
- National Association of Industrial and Office Properties (NAIOP) Hawai'i Public/Government Renovation Kūkulu Hale Award, 2013
- American Society of Landscape Architects (ASLA) Honolulu Award of Excellence, 2012

Hilton Grand Waikikian

- American Resort Development Association (ARDA) ACE Project of Excellence Award, 2010
- Waikīkī Improvement Association (WIA) Ho'owehiwehi Nui Award, 2009

Hilton Hukulani Waikīkī

- American Resort Development Association (ARDA) Best Renovation Award, 2015
- General Contractors Association (GCA) of Hawai'i Award of Excellence - Building Construction, 2014

Hilton Waikōloa Kings Land Phase I

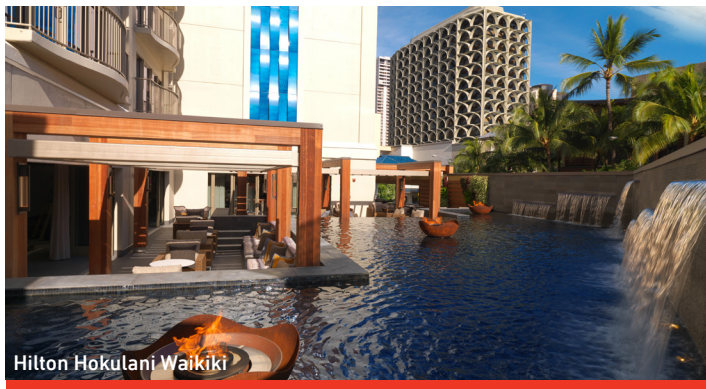
- American Resort Development Association (ARDA) Award of Green Sustainability Program Within a Resort, 2012

Hilton Waikōloa Kings Land Clubhouse

- American Society of Heating, Refrigerating & Air-Conditioning Engineers (ASHRAE) 1st Place, Region X, Technology Award, 2011

Holo Holo Ku Residential Condominiums

- American Institute of Architects (AIA) Honolulu Mayor's Choice Award, 2004
- Building Industry Association (BIA) Hawai'i New Residential Division Award, 2004



honors & awards

HPH Kapi'olani Medical Specialists

- American Society of Interior Designers (ASID) Healthcare Facilities, Award of Merit, 2017

HPU Waterfront Lots at Aloha Tower Marketplace

- National Association of Industrial and Office Properties (NAIOP) Hawai'i Renovation Kūkulu Hale Award, 2016
- American Society of Interior Designers (ASID) Commercial, Award of Excellence, 2016
- General Contractors Association (GCA) of Hawai'i Renovation/Remodeling, Award of Excellence, 2016

Hyatt Centric Waikīkī Beach

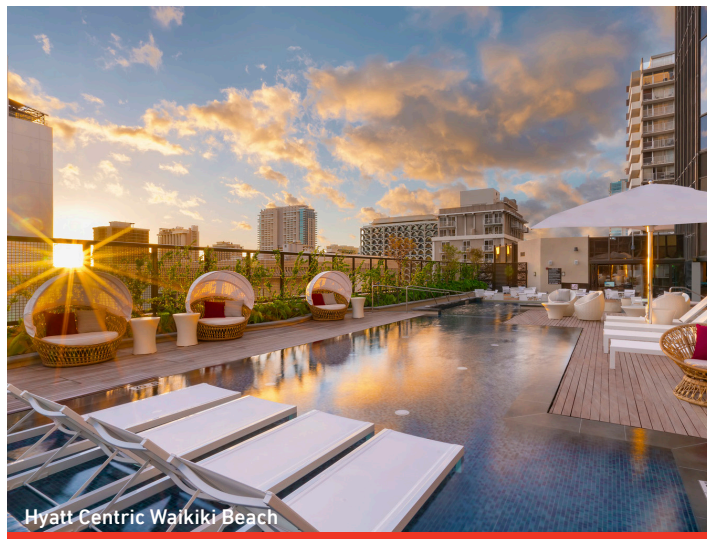
- National Association of Industrial and Office Properties (NAIOP) Hawai'i Renovation Project - Over 40,000 SF, Kūkulu Hale Award, 2017

Hyatt Residence Club - Kā'anapali Beach Maui

- American Resort Development Association (ARDA) Resort Architecture Award, 2015
- American Resort Development Association (ARDA) Best Site Plan Award, 2015
- American Resort Development Association (ARDA) ACE Project of Excellence Award, 2015

'Iolani School Phase I

- National Association of Industrial and Office Properties (NAIOP) Hawai'i New Project, Kūkulu Hale Award, 2005
- Building Industry Association (BIA) Hawai'i Grand Award, 2004
- American Society of Interior Designers (ASID) Design Awareness Award, 2004
- General Contractors Association (GCA) of Hawai'i Award of Excellence, 2004
- Building Industry Association (BIA) Hawai'i Renovation Project of the Year, 2002
- National Association of Industrial and Office Properties (NAIOP) Hawai'i New Project, Kūkulu Hale Award, 2002



Hyatt Centric Waikiki Beach

'Iolani School K-1 Community

- American Institute of Architects (AIA) Honolulu Award of Merit, 2020
- American Institute of Architects (AIA) Honolulu People's Choice Award, 2020

'Iolani School Residence Hall

- American Institute of Architects (AIA) Honolulu Award of Merit, 2019
- General Contractors Association (GCA) of Hawai'i Award of Excellence, 2020

'Iolani School Sullivan Center

- National Association of Industrial and Office Properties (NAIOP) Hawai'i New Project Green Building, Kūkulu Hale Award, 2014
- General Contractor Association (GCA) Award of Excellence - Design-Build/Design-Assist Construction, 2014
- International Interior Design Association (IIDA) Hawai'i Award of Merit, 2014
- American Institute of Architects (AIA) Honolulu People's Choice Award, 2014

Japengo - Hyatt Regency Resort & Spa

- Building Industry Association (BIA) Hawai'i Renaissance Commercial Remodel Award, 2011

Joan K. Mendel Kindergarten Classroom

- American Institute of Architects (AIA) Honolulu Award of Merit, 2019



'Iolani School K-1 Community



Joan K. Mendel Kindergarten Classroom

honors & awards

Kai Lani at Ko Olina Housing

- *Hawaiian Electric Company (HECO) Energy Efficiency Award, 2002*
- *Building Industry Association (BIA) Hawai'i Parade of Homes, First Place, 2002*
- *Building Industry Association (BIA) Hawai'i New Residential Division - Up to \$750,000, 2004*

Kailua Community Planning

- *American Planning Association (APA) Hawai'i Innovation in Neighborhood Planning, 2002*

Kalihi Valley Homes Phase I Renovation

- *American Institute of Architects Pacific NW Region (AIA NW) Award of Merit, 2003*
- *American Institute of Architects (AIA) Honolulu Award of Merit, 2002*
- *American Institute of Architects (AIA) Honolulu Mayor's Choice Award, 2002*
- *Building Industry Association (BIA) Hawai'i Renovation Project of the Year, 2002*
- *National Association of Industrial and Office Properties (NAIOP) Hawai'i Renovation Project of the Year, Kūkulu Hale Award, 2002*

Kamakana Villages at Keahuolu

- *American Planning Association (APA) Hawai'i Outstanding Planning Award, 2011*

Kamehameha Schools Cultural Resource Management Plan

- *American Planning Association (APA) Hawai'i Environment/Preservation Award, 2013*

Kamehameha Schools Hale'iwa Store Lots

- *American Planning Association (APA) Hawai'i Historic Preservation Award, 2015*
- *American Council of Engineering Companies (ACEC) Hawai'i Engineering Honor Award, 2016*
- *American Institute of Architects (AIA) Honolulu Honorable Mention, 2016*
- *National Association of Industrial and Office Properties (NAIOP) Hawai'i Renovation - Over 40,000 SF, Kūkulu Hale Award, 2017*



Kamehameha Schools Hawai'i Campus

- *National Association of Industrial and Office Properties (NAIOP) Hawai'i Non-profit, Kūkulu Hale Award, 2003*

Kamehameha Schools Maui Campus

- *National Association of Industrial and Office Properties (NAIOP) Hawai'i Non-profit, Kūkulu Hale Award, 2009*

Kamehameha Schools North Shore O'ahu Master Plan

- *American Planning Association (APA) Hawai'i National Planning Excellence Award for Innovation in Sustaining Places, 2011*
- *American Planning Association (APA) Hawai'i Outstanding Planning Award, 2008*

Kaua'i Community Federal Credit Union

- *National Association of Industrial and Office Properties (NAIOP) Hawai'i New Non-Profit Project Award, 2012*

Kauna'oa Country Club

- *Building Industry of Hawai'i (BIA) Grand Award New Commercial, 2007*

King Kamehameha Kona Beach Hotel

- *National Association of Industrial and Office Properties (NAIOP) Hawai'i Commerical Renovation - Over 40,000 SF, Kūkulu Hale Award, 2011*
- *American Society of Interior Designers (ASID) Award of Honor, 2010*

Koloa Landing Resort & Spa

- *General Contractor Association (GCA) of Hawai'i Award of Excellence, 2014*



honors & awards

Kuhio Park Terrace

- American Institute of Architects (AIA) Honolulu Mayor's Choice Award, 2010

Laiopua 2020 Community Center

- American Planning Association (APA) Hawai'i Community-Based Planning Award, 2008

Lyon Arboretum

- American Planning Association (APA) Hawai'i Hawai'i Preservation Award, 2006

Marriott Maui Ocean Club

- Green Business Hawai'i Award for Outstanding Efforts, 2012

Nanea Clubhouse

- American Institute of Architects Pacific NW Region (AIA NW) Design Citation Award, 2006
- Building Industry Association (BIA) Hawai'i Overall Grand Award for New Commercial, 2006
- American Society of Interior Designers (ASID) Award of Excellence, 2006
- National Association of Industrial and Office Properties (NAIOP) Hawai'i Commercial, Kūkulu Hale Award, 2006
- American Institute of Architects (AIA) Honolulu Award of Excellence, 2005
- Building Industry Association (BIA) Hawai'i New Commercial Award, 2004

Parker Ranch Center

- Hawai'i Tourism Authority (HTA) Keep it Hawai'i, Award of Merit, 2003

PBS Hawai'i

- National Association of Industrial and Office Properties (NAIOP) Hawai'i Non-Profit Kūkulu Hale Award, 2018
- American Society of Interior Designers (ASID) Commercial: Office Space, Award of Excellence, 2016

Pu'u Kukui Elementary School

- American Society of Landscape Architects (ASLA) General Design, Award of Merit, 2015

The Salvation Army KROC Center Hawai'i

- National Association of Industrial and Office Properties (NAIOP) Hawai'i New Commercial, Kūkulu Hale Award, 2012
- American Society of Interior Designers (ASID) Institutional, Award of Honor, 2012
- American Society of Interior Designers (ASID) Institutional, Award of Excellence, 2012

St. Regis Princeville Resort

- Building Industry Association (BIA) Hawai'i Commercial Remodeling, Grand Award, 2010

Standard State Mitigation Plan CNMI

- American Planning Association (APA) Hawai'i Current Topic Award: Safe Growth, 2004

U.S. Army Corps of Engineers, Honolulu District Consolidated Real Property Master Plan, Okinawa Area

- U.S. Army Corps of Engineers, Honolulu District Award of Excellence, 2010



honors & awards

U.S. Army Corps of Engineers, Honolulu District Consolidated Training and Medical Facility

- U.S. Army Corps of Engineers, Honolulu District
Award of Excellence, 2007

University of Hawai'i - Center for Microbial Oceanography: Research and Education (C-More)

- American Institute of Architects (AIA) Honolulu
Award of Merit, 2012
- American Institute of Architects (AIA) Honolulu
Lipman-Member's Choice Award, 2012
- American Society of Interior Designers (ASID)
Institutional, Award of Honor, 2012
- American Society of Interior Designers (ASID)
Award of Excellence, 2012
- National Association of Industrial and Office Properties (NAIOP) Hawai'i
New Commercial Project - Under 40,000 SF, Kūkulu Hale Award, 2011
- National Concrete Masonry Association (NCMA),
Award of Excellence, 2011
- Masonry Institute of Hawai'i, (MIH)
Outstanding Project Award, 2010

Waialua Town Master Plan

- American Planning Association (APA) Hawai'i
Community-Based Planning Award, 2005

Wailea Beach Marriott Resort & Spa

- National Association of Industrial and Office Properties (NAIOP) Hawai'i
Commercial Renovation - Over 40,000 SF, Kūkulu Hale Award, 2019

Ward Entertainment Center

- Building Industry Association (BIA) Hawai'i
Overall Grand Award, 2002
- National Association of Industrial and Office Properties (NAIOP) Hawai'i
Project of the Year, 2002

Wooden Structures Repair Manual for Historic Facilities at Joint Base Pearl Harbor-Hickam for Commander, Navy Region Hawai'i

- Historic Hawai'i Foundation (HHF)
Preservation Commendation Award, 2017



Wailea Beach Marriott Resort & Spa



University of Hawai'i C-More



Ward Entertainment Center

civil engineering

Services Overview

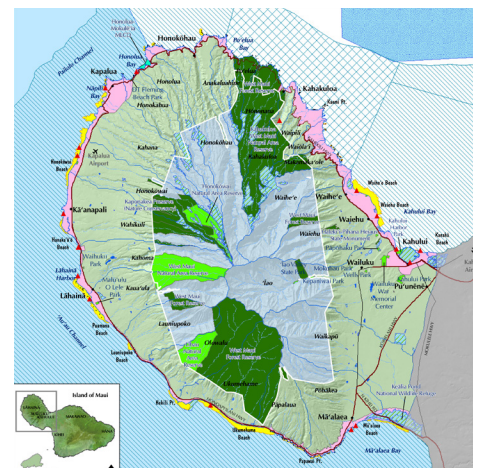
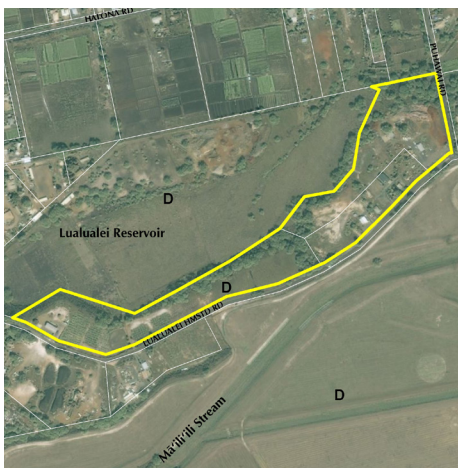
G70 is a full-service civil engineering practice. We provide services for a wide variety of project types serving the public and private sectors, including:

- Land Development
- Residential Site Development
- Commercial Site Development
- Energy Systems Development
- Industrial Site Development
- Resort/Hospitality Site Development
- Institutional/Educational Site Development
- Transportation
- Wastewater
- Water Supply and Distribution
- Utility Infrastructure
- Stormwater Management
- Sustainable Design

Civil Engineering Consulting Services include the full range of services for a civil consulting firm. Our capabilities are broadened significantly with the overlapping services and abilities of G70, including Planning and Environmental Services, Land-Use Permitting, Architecture, Sustainable Development, GIS and Geospatial Services, and Asset Management.

- Site Master Planning and Site Selection
- Infrastructure Master Planning
- Feasibility Studies and Due Diligence
- Preliminary Engineering Report (PER)
- Permitting – NPDES, UIC, Dept. of the Army, Water Quality Certification, SCAP
- Environmental Assessments (EA) and Environmental Impact Statements (EIS)
- Drainage and Water Quality
- Watershed and Ecosystem Management Planning
- Infrastructure Modeling
- Surface Modeling and Earthwork Analysis
- Geospatial Analysis and Mapping
- Construction Plans, Specifications and Cost Estimates
- Bid Proposals and Contract Documents
- Construction Administration and Observation
- Project Management
- Value Engineering
- Visualization Services
- Community Support and Public Involvement

G70 recognizes key trends in both our industry and society. We position ourselves and our company to capitalize on these trends by adapting our services and capabilities. Additionally, we anticipate the needs of our clients and enhance their projects by offering services that are synergistic or complementary to one another.



planning and environment

Services Overview

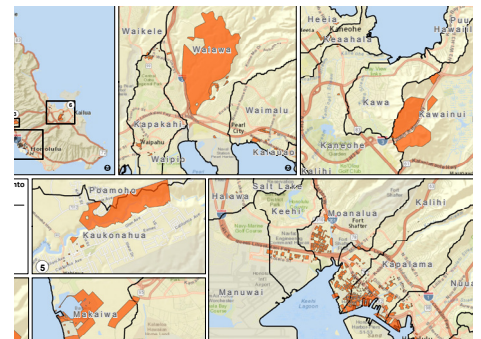
G70 provides a variety of services to meet the complex challenges of planning land resources and diverse communities with a sustainable future. Our extensive experience in all phases of the development process includes Master Planning, Community Building and Land Use Entitlements. We are staffed to manage large-scale Environmental and Physical Planning with architecture to create appealing, sustainable settings.

Our urban and environmental planners collaborate with in-house cultural experts, as well as solicit community input to incorporate historical and cultural elements in our planning process. Before proceeding with any project, we ensure that our environmental studies and land use plans are accepted by the community and the approving agencies.

G70 provides landowners and government agencies with the full range of land use permitting and entitlement services at both the State and County levels.

G70 planning services include:

- Community Master Plans
- Resort Master Plans
- Educational Campus Plans
- Regional, General and Specific Plans
- Urban Design Plan / Design Guidelines
- Park and Open Space Plans
- Community Involvement and Facilitation
- Feasibility Studies and Alternatives Analysis
- Land Use Permits
- Development Constraints Analysis (regulatory, environmental, technical)
- Regional and Area-wide Land Use Planning
- Detailed Property and Site Assessments, and Due Diligence Reporting
- Environmental Assessments and Environmental Impact Statements
- Cultural & Historic Resource Management



planning and environment

Geographical Information System (GIS)

G70 utilizes GIS technology as an essential tool in a broad-range of architectural, planning, sustainable development, and asset management projects. Our experience applying GIS technology includes:

- Land Use Planning
- Military Planning
- Site Investigation/Analysis/Selection
- Entitlement Process
- Emergency Preparedness/Management
- Flood Hazard Mapping
- Environmental Planning/Management

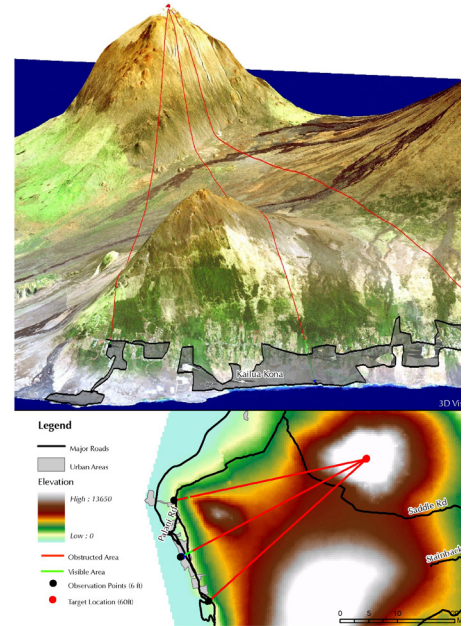
In addition, we provide GIS development for clients requiring needs assessments, requirements analysis, data collection and conversion, application development, geo-database design/creation, mapping, and data modeling and analysis.

At G70 we establish a clear project task that describes how GIS will be applied and support each project. Whether the task is to implement an interactive tool for accessing useful information through online maps or to conduct complex analysis of both geospatial and non-geospatial data, we deliver high quality GIS products to our clients.

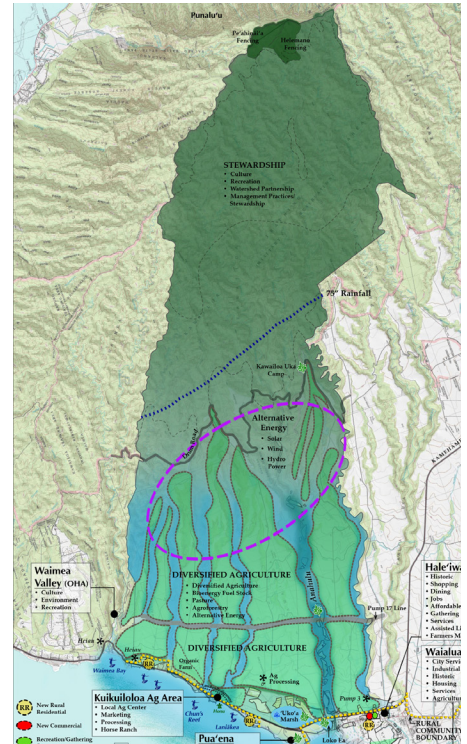
Our GIS Services group consists of a multi-disciplinary team of GIS/Geospatial professionals, GIS-trained planners, GIS-trained architects, and GIS-trained graphic designers working across the company as an integrated technology team.

Select GIS experience includes:

- *West Kaua'i Community Plan*
- *CCH NPDES Storm Water Public Education Project*
- *CCH DEM O'ahu Coastal Communities Evacuation Planning*
- *Commonwealth of the Northern Mariana Islands Standard State Mitigation Plan*
- *DHHL Anahola Regional Plan*
- *DHHL Kahikinui Regional Plan*
- *DHHL Kaua'i Island Plan*
- *DHHL Moloka'i Island Plan*
- *NAVFAC Hawai'i Natural Resources and Cultural Resources GIS*
- *USACE West Maui Watershed Study*
- *South Kona FEMA Flood Hazard Study*
- *DOT Airports Division Architectural Data Conversion Phases I-VII*



Mauna Kea
Line of Sight from Kailua Kona



services overview

Planning & Environment

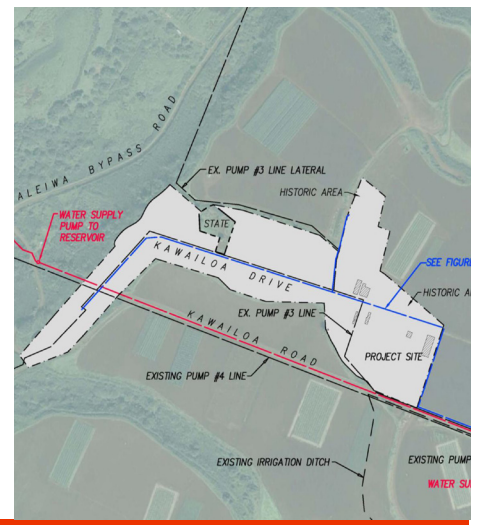
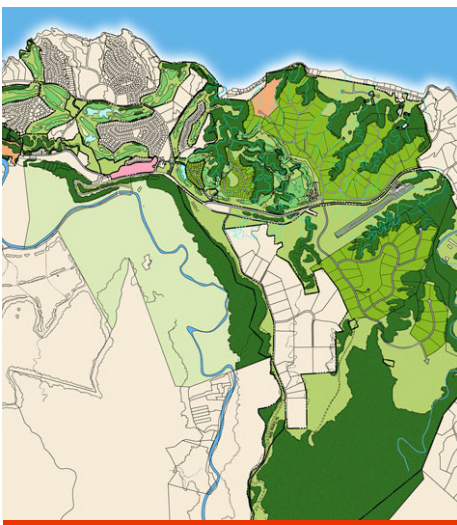
G70 provides a variety of services to meet the complex challenges of planning land resources and diverse communities with a sustainable future. Our extensive experience in all phases of the development process includes Master Planning, Community Building and Land Use Entitlements. We are staffed to manage large-scale Environmental and Physical Planning with architecture to create appealing, sustainable settings.

Our urban and environmental planners collaborate with in-house cultural experts, as well as solicit community input to incorporate historical and cultural elements in our planning process. Before proceeding with any project, we ensure that our environmental studies and land use plans are accepted by the community and the approving agencies.

G70 provides landowners and government agencies with the full range of land use permitting and entitlement services at both the State and County levels.

G70 planning services include:

- Community Master Plans
- Resort Master Plans
- Educational Campus Plans
- Regional, General and Specific Plans
- Urban Design Plan / Design Guidelines
- Park and Open Space Plans
- Community Involvement and Facilitation
- Feasibility Studies and Alternatives Analysis
- Development Constraints Analysis (regulatory, environmental, technical)
- Regional and Area-wide Land Use Planning
- Detailed Property and Site Assessments, and Due Diligence Reporting
- Environmental Assessments and Environmental Impact Statements
- Land Use Permits



resumes

MARK KĀWIKĀ MCKEAGUE

AICP
President, Principal Planner
Director of Cultural Planning



Mark Kāwika McKeague brings over 26 years of experience as a Kanaka Maoli planner, integrating indigenous knowledge, cultural stewardship, and environmental responsibility into transformative planning solutions. As Principal Planner at G70, he leads efforts to craft community-driven master plans, cultural resource management programs, and environmental impact studies, ensuring that each project reflects the values of mālama (caring for the land) and kuleana (responsibility) at its core. Grounded in the ancestral wisdom of Hawai'i and skilled in fostering meaningful collaboration, he works across public, private, and non-profit sectors to deliver culturally resonant and sustainable outcomes. In his various leadership roles, he advocates for embedding a Native Hawaiian perspective into planning frameworks that honor both people and place with cultural and environmental integrity.

SELECTED PROJECTS:

Ho'okua'āina Master Plan
Maunawili, O'ahu

Ho'oulu 'Āina Master Plan
Kalihi, O'ahu

Kauluakalana Master Plan
Maunawili, O'ahu

**Kamehameha Schools -
He'eia Master Plan**
He'eia, O'ahu

**Kamehameha Schools -
Cultural Resource Management Plan**
State of Hawai'i

Kamehameha Schools - North Shore Plan
Island of O'ahu

**Kamehameha Schools - Natural Resource
Management Plan Update**
State of Hawai'i

**Kamehameha Schools - Keauhou Bay
Management Plan**
Keauhou, Hawai'i

**Board of Water Supply - Ko'olau Loa
Watershed Management Plan**
Windward O'ahu

Board of Water Supply Ha'ikū Stairs
He'eia, O'ahu

**Office of Hawaiian Affairs - Strategic
Management Framework for Kaka'ako
Makai**
Honolulu, O'ahu

**Department of Hawaiian Home Lands &
Papakōlea Community Development
Corporation - Native Hawaiian Education
Cultural Center & Kūpuna Assisted Living
Center Master Plan**
Puowaina, O'ahu

**Department of Hawaiian Home Lands -
Ho'olehua Veteran Center - EA, Master
Plan, CRM**
Ho'olehua, Moloka'i

**Department of Hawaiian Home Lands -
Moloka'i Island Plan**
Island of Moloka'i

**Department of Hawaiian Home Lands -
Waimea Nui Master Plan**
Honolulu, O'ahu

**Department of Hawaiian Home Lands -
Wai'anae Coast Emergency Access Road/
Parallel Secondary Access Road**
Wai'anae, O'ahu

**Department of Hawaiian Home Lands -
Pu'u Ōpae Special Area & Settlement Plan**
Kekaha, Kaua'i

**University of Hawai'i at Mānoa - Hawai'i
Institute of Marine Biology (Coconut
Island), Master Plan, LRDP, EIS, CIA**
Kāne'ohe, O'ahu

**Pelekane Bay - EA, Ecological Restoration
Assessment**
North Kohala, Hawai'i

PROFESSIONAL REGISTRATIONS & ASSOCIATIONS:

**American Planning Association, Hawai'i
Chapter (APA-HI), Member**

**APA National Tribal and Indigenous
Planning Division, Executive Council,**
2023-present

Omidyar Fellow, 2019-2020

Hula Mamo Hawaiian Civic Club, 2012-2013

**Lamda Alpha International Aloha Chapter,
Member 2021-present**

**Historic Hawai'i Foundation, Board of
Trustees and Executive Committee,**
2021-present

**Hawai'i Leeward Planning Conference
(HLPC), Member**

**Native Hawaiian Chamber of Commerce,
Member**

**PA'I Foundation, Board of Director 2001-
2003; President, 2003-Present**

**O'ahu Island Burial Council, Chair;
Vice-Chair; 'Ewa Moku Representative,**
2005-2012

EDUCATION:

NAGPRA, ARPA Application & Requirement
National Preservation Institute

**Hawai'i State Foundation on Culture and the
Arts, Folk and Traditional Arts Apprentice
Program**
Cyril Lani Pahinui

**Section 106: A Review for Experienced
Practitioners**
National Preservation Institute

**Consultation and Protection of Native
American Sacred Lands**
National Preservation Institute

Master of Urban and Regional Planning
University of Hawai'i at Mānoa, HI

Historic Preservation Graduate Certificate
University of Hawai'i at Mānoa, HI

**Identification & Management of Traditional
Cultural Places**
National Preservation Institute

B.A. Political Science
University of Hawai'i at Mānoa, HI

**FEMA Certified HURRIPLAN Resilient
Building Design Coursework**
National Disaster Preparedness Training
Center

**DeVos Institute of Arts Management at the
Kennedy Center for Performing Arts**

JEFFREY H. OVERTON

AICP, LEED AP
Principal Planner



As Principal Planner, Mr. Overton leads the preparation of Master Plans, environmental impact documents, land use permitting, and community involvement for private developments, military installations, and government projects. His experience spans over 40 years of Environmental Impact Statements and permitting for residential communities, infrastructure and utilities, renewable energy projects, government facilities, scientific installations, schools, resorts, commercial/mixed-use centers, and recreational facilities. Mr. Overton directs community and area-wide Master Plans, site selection studies and urban design plans, and provides expert testimony before State and County land use authorities.

SELECTED PROJECTS:

Kalaeloa Barbers Point Harbor - 2040 Master Plan, Fuel Pier Design, EIS
Kalaeloa, O'ahu

Pan-STARRS Observatory - EIS (NEPA), CDUP
Maunakea, Hawai'i

U.S. Army Garrison Hawai'i - Pohakuloa Training Area, NEPA/HEPA EIS
Pohakuloa, Hawai'i

Pelekane Bay & Watershed - Ecosystem Restoration Plan (NEPA)
Kohala, Hawai'i

Coconut Plantation Village - SMA, PDU, Zone Change
Kapa'a, Kaua'i

East Kapolei Solar (5MW) - Environmental Studies, Permits
Kapolei, O'ahu

Hale'iwa Commercial Redevelopment - Master Plan, Zone Change, EA
Hale'iwa, O'ahu

Hilo Judiciary Complex - Site Selection Study, EIS
Hilo, Hawai'i

Hilton Hawaiian Village Expansion - Master Plan EIS, SMA Permit, PDR, WSD
Honolulu, O'ahu

Ho'opili Community - Master Plan, Zone Change, Urban Design Plan
Kapolei, O'ahu

Kamakana Villages at Keahoulu - Master Plan, EA, Permits
Kona, Hawai'i

Kamehameha Schools - Kapālana Strategic Implementation Master Plan
Kapālana, O'ahu

Kamehameha Schools - Kohou TOD Residential Development
Honolulu, O'ahu

Kamehameha Schools - North Shore Lands Master Plan
North Shore, O'ahu

Kalaeloa ASEF 2 Solar - EA, HCDA Dev. Permit
Kalaeloa, O'ahu

Kapolei Harborside Center - Master Plan, EIS, State Land Use, Zone Change
Kalaeloa, O'ahu

Kawaihae Deep Draft Harbor - EIS (NEPA), EA
Kohala, Hawai'i

Lā'ie Development Plan & Wastewater Facility - EIS, Facility Plan, Permits
Lā'ie, O'ahu

Makaīwa Hills Residential Community - Master Plan, EIS, State Land Use, Zoning
'Ewa, O'ahu

Manini'Ōwali Residential Community - Master Plan, EIS, State Land Use
Kona, Hawai'i

PROFESSIONAL REGISTRATIONS & ASSOCIATIONS:

American Institute of Certified Planners (AICP), Member

Urban Land Institute (ULI), Member

O'ahu Economic Development Board, Chair

U.S. Green Building Council (USGBC) Leadership in Energy and Environmental Design Accredited Professional (LEED AP)

EDUCATION:

M. S. Marine Environmental Science
State University of New York, NY

B. S. Zoology/Biology Oceanography
Duke University, NC

PROJECT HONORS & AWARDS:

Ha'ikū Stairs Study EIS - APA Hawai'i Cultural Preservation Award, 2020

Hale'iwa Store Lots - APA Hawai'i Environment/Preservation Award, 2015

Kamakana Villages at Keahoulu - APA Hawai'i Chapter Outstanding Planning Award, 2011

Kamehameha Schools North Shore Plan - APA National Planning Excellence Award, 2008

Waialua Town Master Plan - APA Hawai'i Chapter Community-based Planning Award, 2005

Mauna Kea Science Reserve Master Plan - APA Hawai'i Chapter Outstanding Planning Award, 2000

KAHEALANI WINCHESTER

P.E.
Associate
Project Manager



Kahealani is a Project Manager for G70 with 22 years of civil engineering and civil design experience. She has developed site utilities; drainage; grading hydraulics; roadway improvements; as well as subdivisions. Kahealani is also responsible for project coordination with clients from the Federal, State and Counties, as well as the private sector; and consultants from multiple disciplines. She is proficient in authoring specifications; design analysis; and cost estimates. Kahealani has a proven track record of delivering projects to budget and within timeframes; trouble shooting; and organizing for maximum efficiency. She has received a Bachelor of Science degree in civil engineering from the Oregon Institute of Technology.

SELECTED PROJECTS:

1 Hotel Hanalei
Princeville, Kaua'i

**Armstrong Builders –
Wailea Multifamily Residential**
Wailea, Maui

**City & County of Honolulu - Department
of Transportation Services - Pearlridge
Bus Transit Center EA, Design and
Construction Support Services**
Honolulu, O'ahu

**County of Maui - Kalani O Maui Campus
Expansion - Phase 1A Office Building**
Wailuku, Maui

**County of Maui - Pavement Rehabilitation
of Various South Maui Roads**
Kīhei, Maui

**County of Maui - Old County Courthouse
Hazard Materials Abatement and
Interior/Exterior Repairs**
Wailuku, Maui

**Department of Education -
James Campbell High School**
'Ewa Beach, O'ahu

**Department of Education - Kūlanihāko'i
High School Phases I, II & III**
Kīhei, Maui

**Department of Education - Kūlanihāko'i
High School Grade Separated Pedestrian
Crossing Alternatives Study, EA**
Kīhei, Maui

**Department of Education - Kūlanihāko'i
High School Overpass Pedestrian
Crossing Design and Construction
Support**
Kīhei, Maui

**Department of Hawaiian Home Lands –
Papakolea, Kalāwahine Geotechnical
and Structural Home Investigation and
Outreach**
Papakolea, O'ahu

**Department of Hawaiian Home Lands
- Kalāwahine Ground Settlement
Investigation and Monitoring**
Papakolea, O'ahu

ECC Waipi'o Solar Farm
Waipahu, O'ahu

First Wind Mililani Solar Farm
Mililani, O'ahu

First Wind Waipi'o Solar Farm
Waipi'o, O'ahu

First Wind Kawaihoa Solar Farm
Kawaihoa, O'ahu

**Hawai'i Health Systems Corporation -
Samuel Mahelona Memorial Hospital
Property Assessment and Master Plan**
Kapa'a, Kaua'i

HHFDC Kahului Civic Center Master Plan
Kahului & Wailuku, Maui

**Lāhainā Cannery Mall - Phase 2A Fuel
Station Site Improvements**
Lāhainā, Maui

PROFESSIONAL REGISTRATIONS & ASSOCIATIONS:

State of Hawai'i - Professional Civil
Engineer (P.E.) #16291

American Council of Engineering
Companies of Hawai'i (ACECH) -
Emerging Leaders Program (ELP)
Cohort #3

Patsy T. Mink Leadership Alliance
Cohort #9

Native Stories - Vice President, Board
Member

EDUCATION:

B.S. Civil Engineering
Oregon Institute of Technology, OR

**Project Work Prior to G70*

KAHEALANI WINCHESTER

P.E.
Associate
Senior Project Engineer

SELECTED PROJECTS:

Lāhainā Cannery Mall - Phase 2B Improvements
Lāhainā, Maui

Lāhainā Cannery Mall - Phase 2A, 2B, 2C SMA Permit & Preliminary Engineering
Lāhainā, Maui

Lāhainā Cannery Mall - Water Meter Replacement and Consolidation
Lāhainā, Maui

NEVI Charging Stations - Kakoi Street and Līhu'e
O'ahu and Kaua'i

Outrigger 'Ohana East Porte Cochere Improvements
Honolulu, O'ahu

Pohai Nani Senior Care
Kāne'ohe, O'ahu

Safeway Fuel Center 1222 at Lāhainā Cannery Mall
Lāhainā, Maui

SunEdison Kawailoa Solar Farm
Kawailoa, O'ahu

SunEdison Helix Waipi'o Solar Farm
Waipahu, O'ahu

SunEdison Waiawa 50MW Solar Farm
Waiawa, O'ahu

Waiawa Solar Project
Waiawa, O'ahu

Amy Greenwell - Botanical Gardens*
Captain Cook, Hawai'i

County of Maui - Papa Avenue Reconstruction STP-3910 (001)*
Kahului, Maui

County of Maui - Kokomo Road Pavement Reconstruction Project STP-0366 (001)*
Makawao, Maui

County of Maui - Kokomo Road and Makawao Avenue Pavement Reconstruction STP-0900 (086)*
Makawao, Maui

County of Maui - Wākea Avenue Rehabilitation STP-3920 (006)*
Kahului, Maui

County of Maui - Wells Street & Wakea Avenue Pavement Reconstruction STP-0900 (082)*
Wailuku, Maui

County of Maui - Lono Avenue Pavement Rehabilitation STP-3950 (007)*
Kahului, Maui

County of Maui - Pukalani Street Pavement Rehabilitation STP-3620 (001)*
Makawao, Maui

County of Maui - Kamehameha Avenue & Hina Avenue Pavement Rehabilitation STP-0900 (079)*
Kahului, Maui

County of Kaua'i, Housing Agency - Lima Ola Workforce Housing Entitlements*
'Ele'ele, Kaua'i

County of Maui - Wells Street Sidewalk Improvement Job No. 13-39*
Wailuku, Maui

Department of Hawaiian Home Lands - Lālāmilo Phase 2A Landscape Buffer & Sidewalk, Bus Stop and Mail Box Center*
Waimea, Hawai'i

Department of Agriculture - Waimea Irrigation System Transfer Ditch Improvements*
Waimea, Hawai'i

Department of Hawaiian Home Lands - Consolidation/Re-subdivision of Kēōkea-Waiohuli Development Phase 1A (47 Lots)*
Kula, Maui

Hickam Fitness Center - Renovation*
Joint Base Pearl Harbor Hickam, O'ahu

HRSOC DB - Hawai'i Regional Security Operations Center*
HRSOC, O'ahu

Lāna'i Community Health Center*
Lāna'i City, Lāna'i

Lālāmilo Housing Phase 2A: Kawaihae Road Improvements at South Kohala Distribution Road*
Waimea, Hawai'i

Kamakoa Waikōloa Workforce Housing*
Waikōloa, Hawai'i

Kamakoa Park*
Waikōloa, Hawai'i

Kohanaiki Pod 6*
Kailua-Kona, Hawai'i

Kona Villages Renovation*
Kailua-Kona, Hawai'i

Ka Milo at Mauna Lani*
Kailua-Kona, Hawai'i

Lāna'i Community Health Center*
Lāna'i City, Lāna'i

Manini'ōwali Phase 2 and Phase 3*
Kailua-Kona, Hawai'i

NAVFAC - Hubzone: Replace Mana Waterline at Pacific Missile Range Facility*
PMRF, Kaua'i

NAVFAC - Hubzone: Bldg 1 Basement Exterior Leak Remediation*
Joint Base Pearl Harbor Hickam, O'ahu

NAVFAC - Hubzone: Playground Equipment and Landscaping at Child Development Center*
Joint Base Pearl Harbor Hickam, O'ahu

NAVFAC - Hubzone: Install Playground Equipment and Landscape at Makalapa Fitness Area*
Pearl Harbor, O'ahu

NAVFAC - Hubzone: Correct Hillside Erosion Control Problem at Richardson Field*
Pearl Harbor, O'ahu

Ulupa'u Housing*
Kāne'ohe Marine Base, O'ahu

Wheeler Air Base - Ammo Road Repair*
Wheeler, O'ahu

**Project Work Prior to G70*

PAUL T. MATSUDA

P.E., LEED AP
Principal
Director of Civil Engineering



Paul Matsuda, P.E., LEED AP is a principal and the Director of Civil Engineering at G70. Paul has 30+ years of civil engineering experience in a wide variety of site development, transportation, and utility infrastructure projects throughout Hawai'i and the Pacific Northwest. He is responsible for the management and delivery of the firm's engineering projects and is actively involved in design and project management for many of them. Paul received a Bachelor of Science degree in civil engineering from the University of Washington and is a licensed professional in Hawai'i, Oregon, and Washington.

SELECTED PROJECTS:

Department of Hawaiian Home Lands - Waimea Nui

Waimea, Hawai'i

Department of Hawaiian Home Lands - Moloka'i Homesteads

Island of Moloka'i

Department of Hawaiian Home Lands - Lualualei Homestead Subdivision Phase II

Lualualei, O'ahu

Department of Hawaiian Home Lands - Lualualei Homestead Subdivision and Stream Study

Lualualei, O'ahu

Department of Hawaiian Home Lands - Ka'u Water Master Plan

Ka'u, Hawai'i

Department of Hawaiian Home Lands - Wong Farm Subdivision

Waimānalo, O'ahu

Department of Hawaiian Home Lands - Kanakaloloa Cemetery

Island of Moloka'i

Department of Hawaiian Home Lands - Moloka'i Homesteads - Construction Management

Island of Moloka'i

Department of Hawaiian Home Lands - Moloka'i Homesteads - Drainage

Island of Moloka'i

Office of Hawaiian Affairs - 4531 Kuamo'o Road Civil Infrastructure Assessment

Kapa'a, Kaua'i

Office of Hawaiian Affairs - Kaka'ako Makai Master Plan

Honolulu, O'ahu

Kamehameha Schools - Palama Uka Camp Master Plan

North Shore, O'ahu

Kamehameha Schools - Hale'iwa Store Lots

Hale'iwa, O'ahu

Kamehameha Schools - Hale'iwa Rural Village Drainage Master Plan

Hale'iwa, O'ahu

Kamehameha Schools - Kapaeloa Cultural Learning Project

Hale'iwa, O'ahu

Kamehameha Schools - Kawaiiloa Agribusiness Center Master Plan

Kawaiiloa, O'ahu

Kamehameha Schools - Kohou Infrastructure Evaluation

Honolulu, O'ahu

Kamehameha Schools - Kohou Residential Alternatives Study

Honolulu, O'ahu

City & County of Honolulu - Emergency Operations Center

Honolulu, O'ahu

City & County of Honolulu - Farrington Highway Widening

Kapolei, O'ahu

City & County of Honolulu - Honolulu Fire Department Regional Fire Training Center

Honolulu, O'ahu

PROFESSIONAL REGISTRATIONS & ASSOCIATIONS:

State of Hawai'i – Professional Engineer (P.E.) Civil #10901

State of Oregon – Professional Engineer (P.E.) Civil #19,250

State of Washington – Professional Engineer (P.E.) Civil #35,943

U.S. Green Building Council (USGBC) - Leadership in Energy and Environmental Design Accredited Professional (LEED AP)

U.S. Green Building Council, Hawai'i Chapter

American Society of Civil Engineers (ASCEH), Member

American Council of Engineering Companies Hawai'i (ACECH), Member

American Water Works Association (AWWA), Member

EDUCATION:

B.S. Civil Engineering

University of Washington, WA

PAUL T. MATSUDA

P.E., LEED AP
Principal
Director of Civil Engineering

SELECTED PROJECTS:

City & County of Honolulu - Honolulu Fire Department Sustainability Study

Honolulu, O'ahu

City & County of Honolulu - NPDES Storm Water Public Education

Honolulu, O'ahu

City & County of Honolulu - Street Sign Inventory Database

Honolulu, O'ahu

County of Kaua'i - Impact Fee Needs Assessment

Island of Kaua'i

County of Maui - Wailuku Campus Master Plan

Wailuku, Maui

County of Maui - Kalana O Maui Campus Expansion - Phase 1A Office Building

Wailuku, Maui

County of Maui - Kalana O Maui Campus Expansion - Phase 1B Parking Structure and Office

Wailuku, Maui

Department of Transportation, Harbors Division - Kalaeloa Harbor Fuel Pier Development Plan

Kalaeloa, O'ahu

Department of Transportation, Harbors Division - Kalaeloa Harbor Environmental Impact Statement

Kalaeloa, O'ahu

Department of Transportation, Harbors Division - Commercial Harbors Civil Engineering Support, Phase 4

State of Hawai'i

- **Hilo Harbor Demolition of Quonset Hut, Reconnaissance Level Survey (HRS 6E), Phase 1 Environmental Site Assessment & Mitigation Plan**
Hilo, Hawai'i Island
- **Hilo Harbor Demolition of Pier 2/3 Shed and Investigation of Sink Holes**
Hilo, Hawai'i Island

- **Hilo Harbor Expansion of Radio Bay Yard**

Hilo, Hawai'i Island

- **Hilo Harbor Exemption from Environmental Assessment (HRS 6E) for Demolition of Water Tank & Tower**

Hilo, Hawai'i Island

Department of Education - Kūlanihāko'i High School Water Master Plan & Improvements

Kīhei, Maui

Department of Accounting & General Services - Hawai'i Film Studio Various Improvements Phases I & II

Honolulu, O'ahu

Department of Accounting & General Services - Kakūanaō'a Renovation

Honolulu, O'ahu

Kahuku Agricultural Subdivision

Kahuku, O'ahu

Kunia Solar Farm

Waipahu, O'ahu

Lunalilo Home Master Plan

Honolulu, O'ahu

University of Hawai'i at Manoa - Metcalf Water System Improvements

Honolulu, O'ahu

University of Hawai'i at Mānoa - Student Housing Study

Honolulu, O'ahu

University of Hawai'i at Mānoa - College of Education Master Plan

Honolulu, O'ahu

University of Hawai'i at Mānoa - Richardson School of Law Outreach Center

Honolulu, O'ahu

University of Hawai'i at Mānoa - Webster Hall

Honolulu, O'ahu

Hoakalei Resort Master Plan

'Ewa, O'ahu

Royal Kunia Phase II Due Diligence

Waipahu, O'ahu

Hawai'i Pacific University - Aloha Tower Lofts

Honolulu, O'ahu

Salvation Army Residence Facilities - Land Use Permitting

Honolulu, O'ahu

RYAN M. K. CHAR

P.E., LEED AP
Chief Operating Officer
Principal



Ryan has 17 years of experience with civil engineering and land-use planning projects in Hawai'i and California. His experience includes master planning, design, permitting, and construction management for commercial, educational, residential, and infrastructure site developments. As COO, Char oversees critical organizational functions and the day-to-day operations, including leadership and team engagement, human resources, facilities and technology requirements, budgets, and coordinating G70's philanthropy efforts. As a principal engineer, he oversees the Civil Engineering Division at G70 and directs the preparation and production of engineering drawings, plans, reports, specifications, and estimates. He is experienced in educational campus infrastructure master planning and design, and stormwater management, including design of new Low Impact Development stormwater quality Best Management Practices and controls.

SELECTED PROJECTS:

Hawai'i Public Housing Authority - Pumehana ADA, Life Safety, Building and Site Improvements
Honolulu, O'ahu

City & County of Honolulu – Pearlridge Bus Transit Center Mobility Hub (EA, Design)
'Aiea, O'ahu

City & County of Honolulu Department of Transportation Services - Ala Moana & Kapolei Transit Center Feasibility Studies
Honolulu, Kapolei, O'ahu

City & County of Honolulu – Farrington Highway Widening EA and Preliminary Design
Kapolei, O'ahu

HART Dillingham Kaka'ako Station Group
Honolulu, O'ahu

Kaimuki Gateway Plaza Off-site Improvements, Traffic Signal Design
Honolulu, O'ahu

Department of Education - James Campbell High School
'Ewa Beach, O'ahu

Department of Hawaiian Home Lands – Kanakaloloa Cemetery
Ho'olehua, Moloka'i

Department of Hawaiian Home Lands – Moloka'i Homesteads Flood Reconnaissance Study
Kalama'ula, Moloka'i

Hawai'i Dairy Farms – Planning and Permitting, EA, Construction Plans; State Dept. of Health Approvals and Construction Management
Māhā'ulepū, Kaua'i

Department of Accounting and General Services – Hawai'i Film Studio Various Improvements, Phase I and II
Honolulu, O'ahu

Department of Hawaiian Home Lands - Ho'olehua Water System Improvements USDA Project
Ho'olehua, Moloka'i

Department of Hawaiian Home Lands – Wai'anae Coast Emergency Access Road Planning & Feasibility Study
Wai'anae, O'ahu

Howard Hughes Corporation Kewalo Basin Infrastructure Study
Honolulu, O'ahu

Adventist Health Castle Medical Center - Hawai'i Loa Campus Master Plan & Preliminary Engineering Report
Kāne'ohe, O'ahu

PROFESSIONAL REGISTRATIONS & ASSOCIATIONS:

State of Hawai'i – Professional Engineer (P.E.) Civil, #15480

State of California – Professional Engineer (P.E.) Civil, #76734

Government of Guam – Professional Engineer (P.E.) Civil, #1749

U.S. Green Building Council (USGBC) Leadership in Energy and Environmental Design Accredited Professional (LEED AP)

American Public Works Association (APWA), Member, Past President

American Society of Civil Engineers (ASCE), Member

American Council of Engineering Companies Hawai'i (ACECH), Member

Rotary Club of Honolulu Sunrise, Member; President 2018-2019

Rotary District 5000, Youth Service Chair 2020-2025

EDUCATION:

Master Degree in Civil Engineering
University of Southern California, CA

Bachelors Degree in Civil Engineering
Minor in Business Administration
University of Southern California, CA

OSHA 16-Hour Occupational Safety and Health Confined Space Training (29CFR 1910.146 (g 1 through g 3))

HONORS & AWARDS:

Hawai'i Business Magazine - 20 for the next 20 Awardee, 2025

Pacific Business News - 40 Under 40, Awardee, 2016

Pacific Century Fellows, Fellow, 2015-2016

JAMES L. STONE

D. Arch., AIA, LEED AP
Principal



James holds a Bachelor's and Doctorate of Architecture degree and is also a LEED-accredited professional with more than 30 years of architecture experience. James has directed the design and construction of significant and complex Resort, residential, commercial, and government project types by capitalizing on long-standing project experience, collaborating with clients and communities with creative and optimal design solutions with a sensitivity to the history and legacy of the site and environment. James has been recognized by AIA, ACECH, and NAIOP for his work on a variety of project types. He served as the founding chair and is a past Regional Director of the U.S. Green Building Council, Hawai'i Chapter.

SELECTED GOVERNMENT/MILITARY PROJECTS:

Kwajalein Air Traffic Control Tower
U.S. Army Garrison, Kwajalein Atoll

Child Development Center
Schofield Barracks , O'ahu

Pohakuloa Air Support Building
Pohakuloa Training Area, Hawai'i

Repair Building 703 Dining Facility
U.S. Army Garrison, Kwajalein Atoll

Bachelor Quarters - LEED Gold
Fort Shafter, O'ahu

Bachelor Quarters - LEED Gold
Marine Corps Base Kāne'ohe, O'ahu

ASOC, Wheeler Army Airfield
Wheeler Army Airfield, O'ahu

Building 1283 Cyss , Schofield Barracks
Schofield Barracks , O'ahu

**Combined Support Maintenance
Keaukaha Military Reservation**
Hilo, Hawai'i

Aviation Simulator Training Facility
Marine Corps Base Kāne'ohe, O'ahu

SELECTED DESIGN BUILD PROJECTS:

Hawai'i State Hospital
Kāne'ohe, O'ahu

**Bachelor Quarters, Marine Corp Base
Hawai'i (LEED Gold Certified)**
Kāne'ohe, O'ahu

Bachelor Quarters - LEED Gold
Fort Shafter, O'ahu
**ASOC, Wheeler Army Airfield
(LEED Certifiable)**
Wheeler Army Airfield, O'ahu

SELECTED RESIDENTIAL PROJECTS:

Mohala Mai - 1936 Citrion Street
Honolulu, O'ahu

**City & County of Honolulu -
806 Iwilei Affordable Housing /
Homeless Resource Center**
Honolulu, O'ahu

West Loch Modular Housing
'Ewa Beach, O'ahu

Kaupuni Village - LEED Platinum
Wai'anae, O'ahu

Kaimuki Christian Church & School
Kaimuki, O'ahu

Ke Kailani Resort Community
Mauna Lani, Hawai'i

Maluhia Resort Community
Wailea, Maui

Ke Kai Lani Oceanfront Community
Ko Olina, O'ahu

SELECTED RETAIL PROJECTS:

**Kamehameha Schools - Hale'iwa
Store Lots**
Hale'iwa, O'ahu

'Aikahi Park Shopping Center
Kāne'ohe, O'ahu

PROFESSIONAL REGISTRATIONS & ASSOCIATIONS:

Licensed Architect, State of Hawai'i

American Institute of Architects (AIA),
Member; Honolulu Chapter Director.

2002-2004

U.S. Green Building Council (USGBC)
Leadership in Energy and Environmental
Design Accredited Professional (LEED
AP), Founding Chair & Pacific Regional
Director, 2007-2009

American Resort Development
Association (ARDA), Member

Urban Land Institute (ULI), Member

EDUCATION:

Doctorate of Architecture

University of Hawai'i at Mānoa, HI

Bachelor of Architecture

University of Hawai'i at Mānoa, HI

PROJECT HONORS & AWARDS:

City & County of Honolulu -
806 Iwilei Affordable Housing / Homeless
Resource Center - ACECH Engineering
Excellence Award, Honor Awards, 2023;
ASCE. Outstanding Civil Engineering
Award, Best Green/Sustainable/Envision
Project, 2022

Hawaii Army National Guard Combined
Support Maintenance Shop - ACECH
Engineering Excellence Award, Honor
Awards, 2023

Kamehameha Schools Hale'iwa Store
Lots - NAIOP Kūkulu Hale Awards,
Renovation Award, 2016; AIA, Honorable
Mention, 2016

Hilton Waikoloa Kings Land Phase I -
ARDA, Green Sustainability Program
Within a Resort Award, 2012

Kaupuni Village - AIA, Mayor's Choice
Award, 2011; USGBC, Outstanding Green
Project Team Award, 2011; American
Planning Association (APA), Best
Practices for Sustainability Award, 2010

Group 70 Interior Design Studio - Building
Industry Association (BIA), Overall Grand
Design Award, 2006; BIA Built Green
Grand Award, 2006; NAIOP Kūkulu Hale
Awards, Renovation Award, 2006

Kapolei Hale - AIA, Award of Merit, 2001

Chinatown Manor - AIA, Award of Merit,
1996

**Project Work Prior to G70*

project profiles

City & County of Honolulu Alapa'i Joint Traffic Management & Emergency Operations Center

HONOLULU, O'AHU

G70 provided programming, conceptual design and entitlement services. This includes an Environmental Assessment and a Special District Major Permit for two facilities at the existing bus transit site in Downtown Honolulu. These facilities, collectively known as the Alapa'i Transit Center (ATC) and the Joint Traffic Management Center (JTMC), house operational activities of The Bus and various City and State traffic management and emergency response departments for the purpose of daily and emergency coordination.

PROJECT FACTS

Client: City & County of Honolulu

SERVICES PROVIDED

Planning & Environment



City & County of Honolulu O'ahu Coastal Communities Evacuation Planning

ISLAND OF O'AHU

G7o teamed with Atkins and the Department of Emergency Management to identify refuge areas and develop evacuation route plans for use in the event of a tsunami warning notification for the City and County of Honolulu. Approximately three-quarters of the island's coastline is included in this project. In addition to working with community groups to identify potential shelters and understand local issues, G7o provided GIS expertise including data collection, GPS field verifications and mapping, and GIS-based refuge capacity analysis.

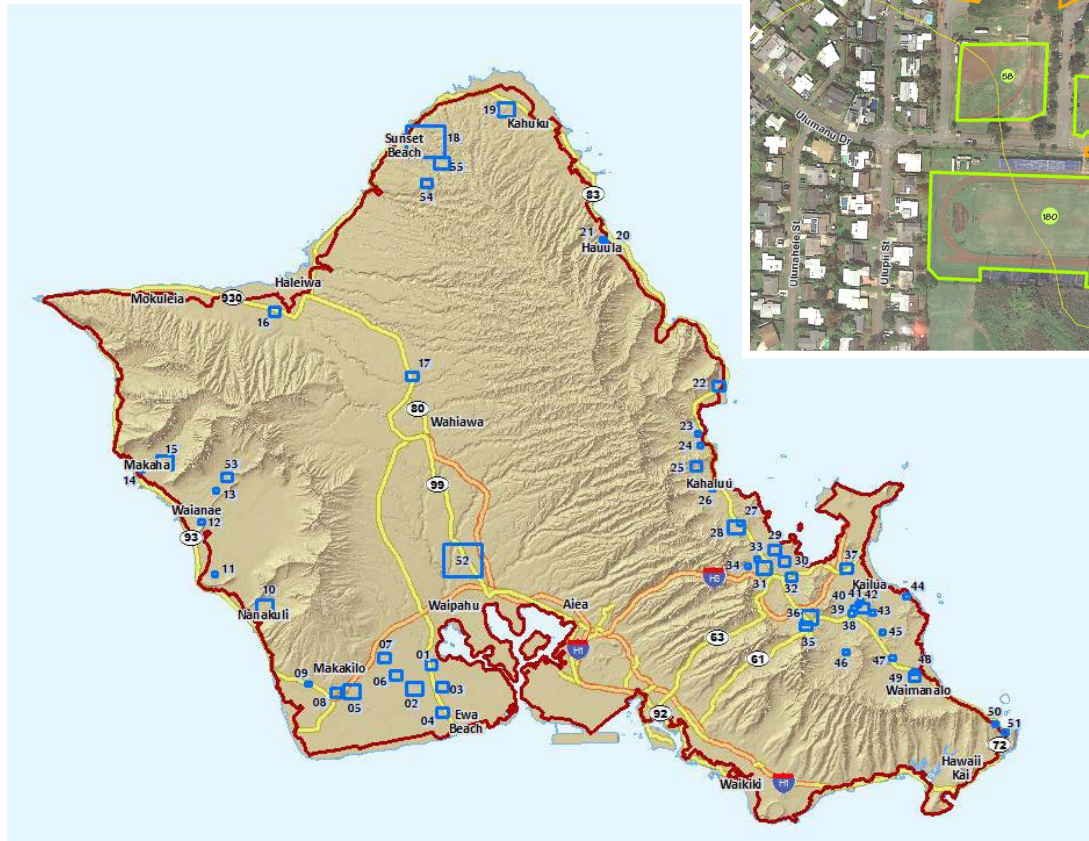
PROJECT FACTS

Client: City & County of Honolulu
Department of Emergency Management

SERVICES PROVIDED

Planning & Environment

GIS Mapping & Analysis



Commonwealth of the Northern Mariana Islands Emergency Operations Center

SAIPAN, NORTHERN MARIANA ISLANDS

G70 is provided Architectural and Planning services for the development of a new Emergency Operations Center at Saipan, Commonwealth of the Northern Mariana Islands (CNMI). The Center will monitor seasonal typhoon events and other natural disasters, and will coordinate civil defense activities on the island of Saipan and throughout the CNMI region of the North Pacific Ocean. G70 completed a NEPA-level Environmental Assessment for the project.

PROJECT FACTS

Client: Government of the Commonwealth of the Northern Mariana Islands

SERVICES PROVIDED

Architecture

Planning & Environment



Commonwealth of the Northern Mariana Islands Standard State Mitigation Plan

NORTHERN MARIANA ISLANDS

The Commonwealth of the Northern Mariana Islands (CNMI) Standard State Mitigation Plan (SSMP) was developed to fulfill the requirements of the Disaster Mitigation Act of 2000. The SSMP is a multi-hazard natural disaster mitigation plan, integrating multiple facets of information using FEMA's HAZUS program and independent data and research gathered by the project team. Hazard profiles were developed for typhoons, tropical storms, floods, tsunamis, earthquakes, volcanic eruptions, drought, and wildfires. A component in this study was the use and application of a Geographic Information System (GIS) in completing an asset inventory and loss evaluation that included identifying key cultural, archaeological, and historical resources assets.

PROJECTS FACTS

Client: Commonwealth of the Northern Mariana Islands

Size: N/A

Construction: N/A

Completion: N/A

SERVICES PROVIDED

Planning & Environment



U.S. Army Corps of Engineers, Honolulu District Hurricane Evacuation Studies

NORTHERN MARINA ISLANDS, AMERICAN SAMOA, HAWAI'I, GUAM

G7o has completed MMTs for all the main Hawaiian Islands, Guam, CNMI and the main Island of Tutuila in American Samoa. We have also trained the emergency staff of these jurisdictions (with the exception of American Samoa - pending) in the use of the tool. We have collaborated with PBS&J on these studies. Under the HES, G7o conducted Post Storm Assessments (PSA) for hurricanes Chata'an and Pongsona when they hit Guam and CNMI. The assessments of the storms and how the Corp products and services performed in these storms and evaluations of improvements for the future.

PROJECT FACTS

Client: US Army Corps of Engineers, Honolulu District

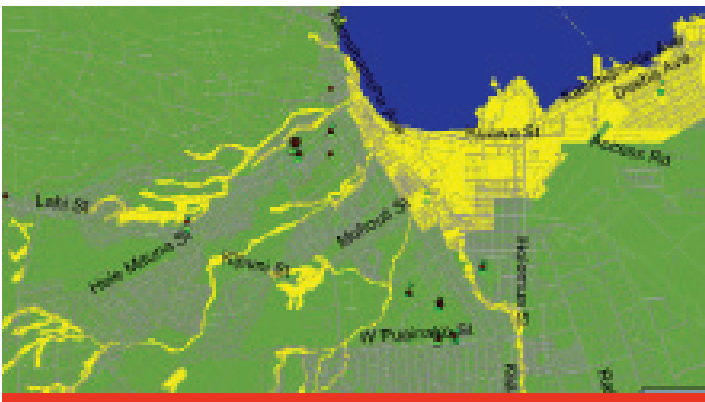
Size: N/A

Construction: N/A

Completion: N/A

SERVICES PROVIDED

Planning



City & County of Honolulu Emergency Operations Center

HONOLULU, O'AHU

Located at the Joint Traffic Management Center (JTMC) site, G70 provided programming and site studies, schematic design, Environmental Assessment, and Historic Preservation Reviews for the CCH Emergency Operations Center. (EOC) The multi-story, high-security proposed facility was to include Emergency Operations Center, Department of Emergency Management (DEM), and the Office of Climate Change, Sustainability and Resiliency (CCS&R) offices over the span of four levels.

The design of the EOC is to provide a secure centralized location, equipped with adequate communications for control during a disaster or emergency.

PROJECT FACTS

Client: City & County of Honolulu,
Department of Design and
Construction

Size: 26,000 sq. ft.

Completion: 2020

SERVICES PROVIDED

Architecture

Civil Engineering

Planning & Environment





111 S. King Street, Suite 170
Honolulu, HI 96813
808.523.5866
www.g70.design