

# The Department of Public Works

County of Hawai'i Roads.

March 7, 2017

# PROPOSED SYSTEM TO PRIORITIZE ROADWAY REPAVING IMPROVEMENTS



1. Budget Availability (“Get the most bang for the buck”)
  - a. County (CIP, Fuel Tax, Bond, Fair Share)
  - b. Federal Funds (FHWA: 80% participation)
  - c. FEMA
2. Safety:
  - a. Road Condition
  - b. Sight Distance Improvement
  - c. School Safety Zones/Walk Paths
3. Emergency
4. Usage (heavily traveled roads)
5. Maintenance (e.g., “Pot Holes,” Damage due to Vegetation, etc.)
6. In-house versus contract out
7. Needs versus wants
8. Project Status (“Shovel Ready”)
  - a. Planning
  - b. Design
  - c. Right-of-way
  - d. Estimate/Cost
  - e. Specifications
9. Project Impact/Degree of benefit:
  - a. Connectivity
  - b. General Community Benefit
  - c. Number of Beneficiaries versus Cost
10. Community Interest/Disinterest
11. Councilmember interest requests
12. Cost
13. Public versus Private

# Highway Maintenance Division

## Repair & maintenance of:

- Roads: Over 970 miles maintained
  - *pot hole repair, resurfacing*
  - *Sidewalks, guardrails, grass cutting, tree trimming*
- Over 2,100 drywells/culverts
- Roads-in-Limbo: 409 miles
- Flood channels: 52 locations
- Bridges: 128
- Training: Heavy equipment, safety
- Emergency response



# Traffic Division

- Installation, operation and maintenance of all streetlights, traffic signals, traffic signs and markings, and other traffic control devices.
- Traffic Safety and Education.



Traffic Signal  
Maintenance, S. Hilo



Driver Feedback Signs

# Engineering Division

- Design, construction, inspection of County infrastructure.
- Code Regulation and Compliance.
- Flood Control Projects and Bridges

**Inspection & Testing**



**Survey**



**Computer Aided Drafting**





# PAST PROJECTS

(East Hawai'i Highlights)

# Kapi'olani Street Improvements, Lanikāula Street to Mohouli Street

- Contractor: Isemoto Contracting Co., Ltd.
- Project Cost: \$14,100,000
- Project enhances traffic, pedestrian, ADA, and bicycle circulation
- Project consisted of Right of Way acquisition; constructing new connecting road including bike lanes and sidewalks, concrete bridge, retaining walls, two traffic signal systems and intersection channelization, street lights and drainage improvements; property/driveway tie-ins; and relocating existing utilities.
- Project completed 8/18/2016



# Kapi'olani Street Improvements, Lanikāula Street to Mohouli Street



5/15/2015



4/15/2016



5/27/2016

# Manono Street Improvements Project

The Manono Street project began Jan. 12 and was completed on May 27, 2016. The benefit of this street renovation project is the incorporation of “complete Streets” components, making it safer for bikers and pedestrians, plus taking care of drainage issues.

This project consisted of improvements to Manono Street between Lanikāula Street and Kekūanā’o Street. This involved new concrete curbs, gutters, sidewalks, roadway reconstruction, drainage improvements, utility relocation, roadway signing and striping and other related improvements.

The Federal Highway Administration is funding eighty (80) percent of the \$4.5 million project cost, and the County the remaining twenty (20) percent.



# Highways Division

## Kekuanaoa St. Resurfacing Project



Completed January 2017

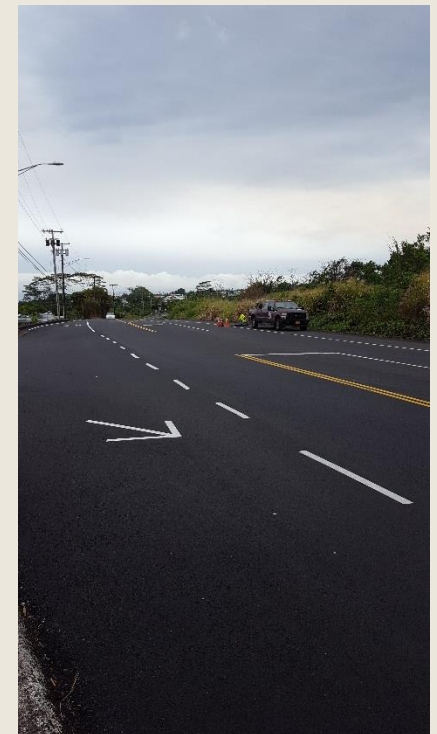




# CURRENT PROJECTS (East Hawai'i)

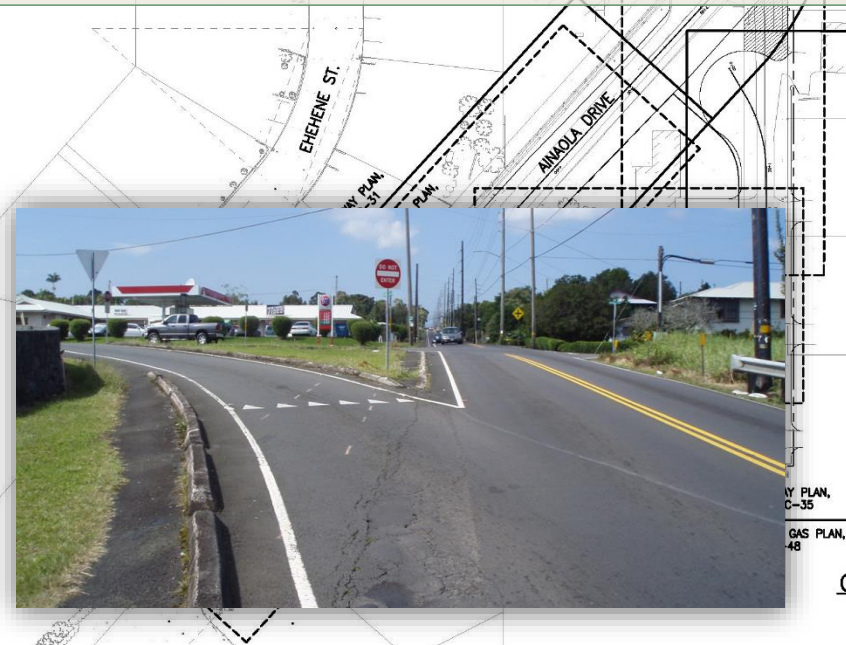
# Komohana Street Reconstruction (Waiānuenue Ave to Kūkūau St.)

- The reconstruction of 4,200 feet of roadway.
- Contractor: Yamada and Sons Inc.
- Construction cost: \$4.9M
- Project consist of reconstructing the roadway and shoulders along Komohana St. from Waiānuenue Ave. intersection to Kūkūau St. intersection. Remaining work includes guardrail installation, utility cover adjustment, traffic signal upgrades, pavement striping and tie-in of concrete driveways. The project will be completed mid-April 2017.



# Kawailani Street Improvements – Phase II

- Current Estimated Cost: \$18,000,000
- Project consists of Right of Way acquisition; installing two traffic signal systems; reconstructing roadway, constructing concrete curb/gutter/sidewalks, retaining walls, and drainage improvements; property/driveway tie-ins; and relocating existing utilities.
- 80% FHWA funds





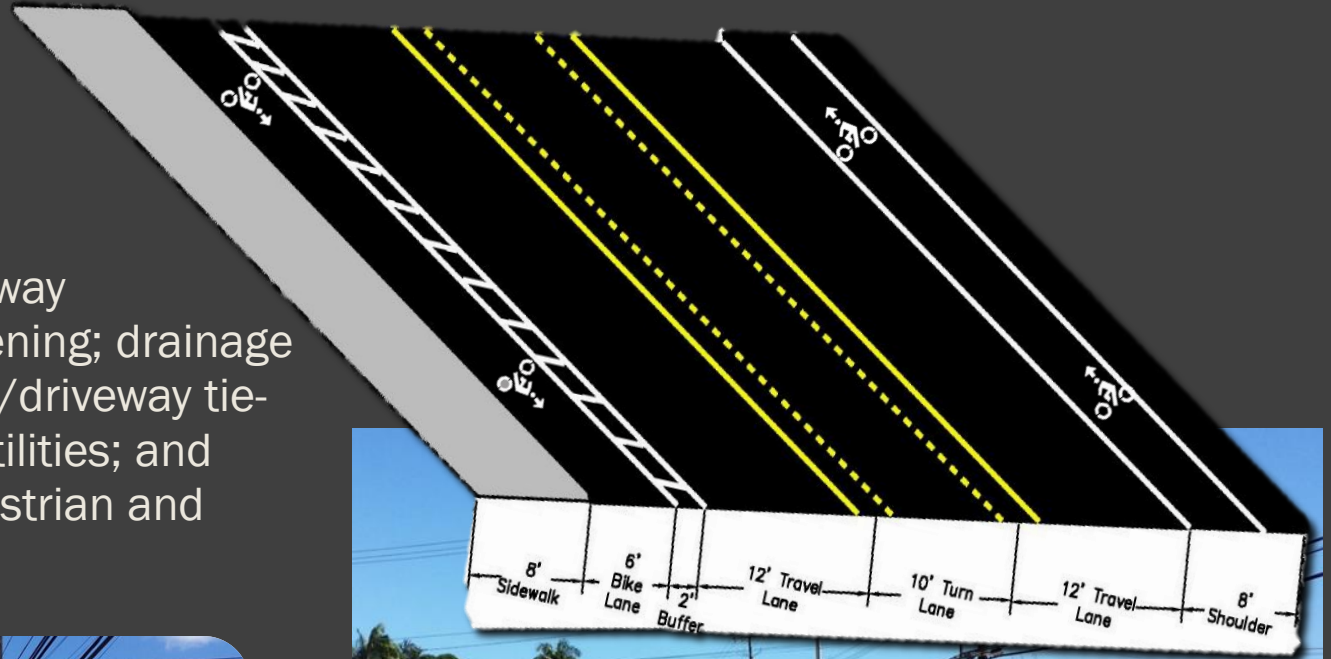
# FUTURE PROJECTS (East Hawai'i)



<b>Projects design and construction</b>	<b>Amount</b>
<b>Kalaniana'ole Avenue Reconstruction</b>	<b>\$12,000,000</b>
<b>Waiānue Avenue Roadway Reconstruction (Kamehameha Ave. to Hilo Hospital)</b>	<b>\$26,000,000</b>
<b>Waiānue Avenue Safety Improvements</b>	<b>\$12,500,000</b>

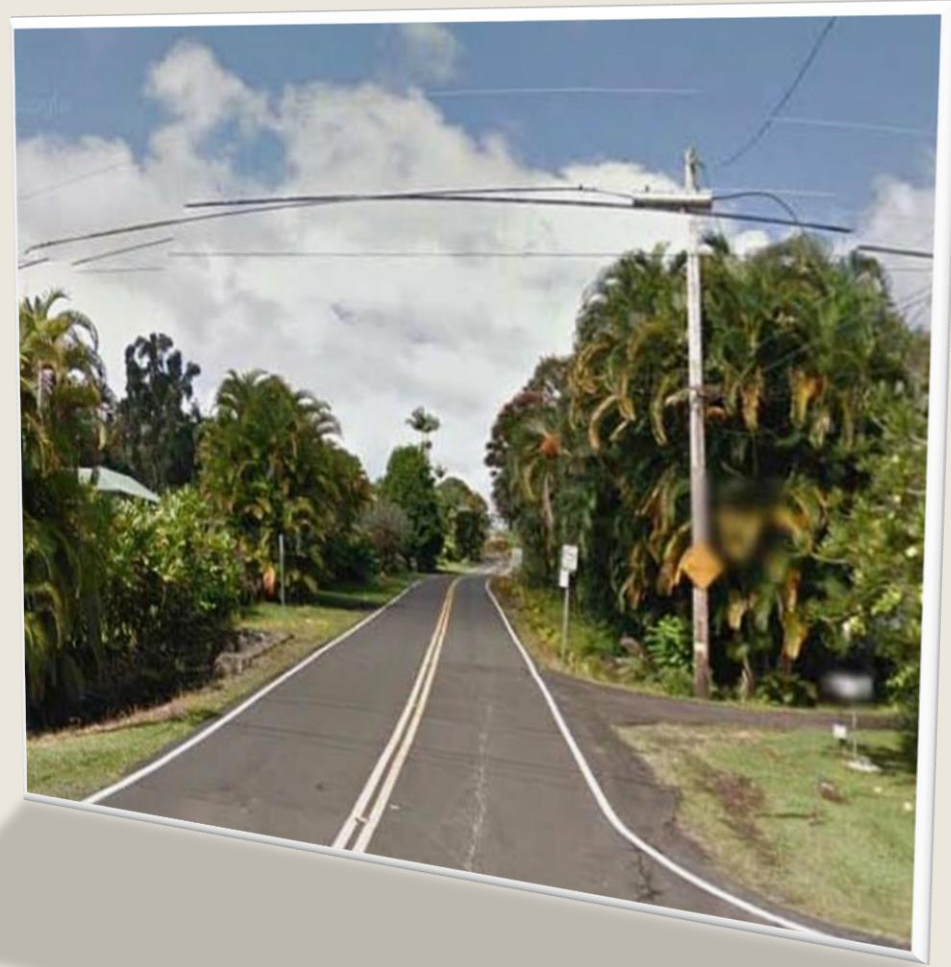
# Kalaniana'ole Avenue Reconstruction

- In Bidding Process
- Estimated Construction Cost: \$12,000,000
- Project consists of roadway reconstruction and widening; drainage improvements; property/driveway tie-ins; adjusting existing utilities; and enhancements for pedestrian and bicycle facilities.



# Waiānuenue Avenue Safety Improvements

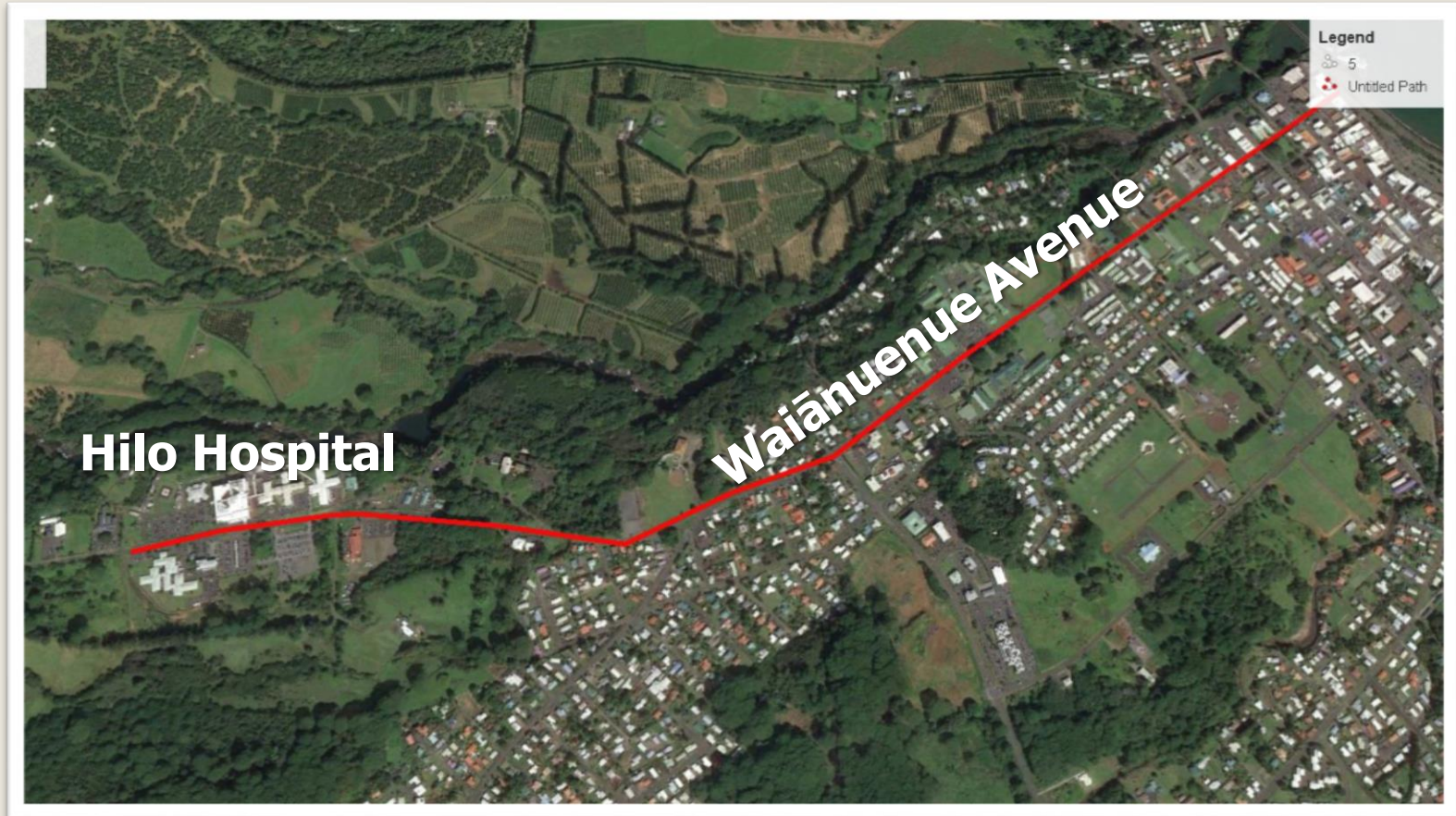
- Planning Phase
- Estimated Construction Cost: \$12,500,000
- 80% FHWA funds
- Project consists of Right of Way acquisition; reconstructing roadway; drainage improvements; property/driveway tie-ins; relocating existing utilities; and enhancements for pedestrian and bicycle facilities.



# Waiānuenue Avenue Roadway Improvements

(Roadway Reconstruction of Waiānuenue Ave. from Kamehameha Ave. to Hilo Hospital)

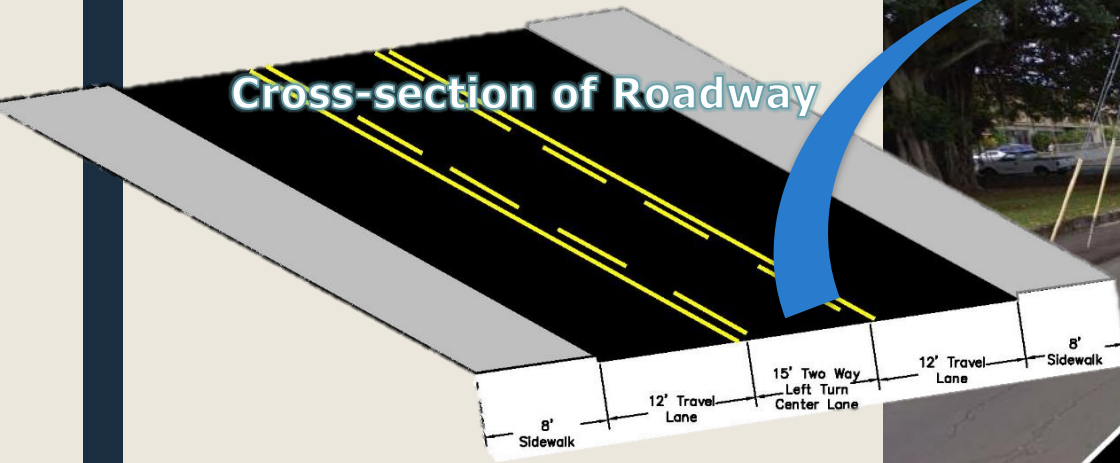
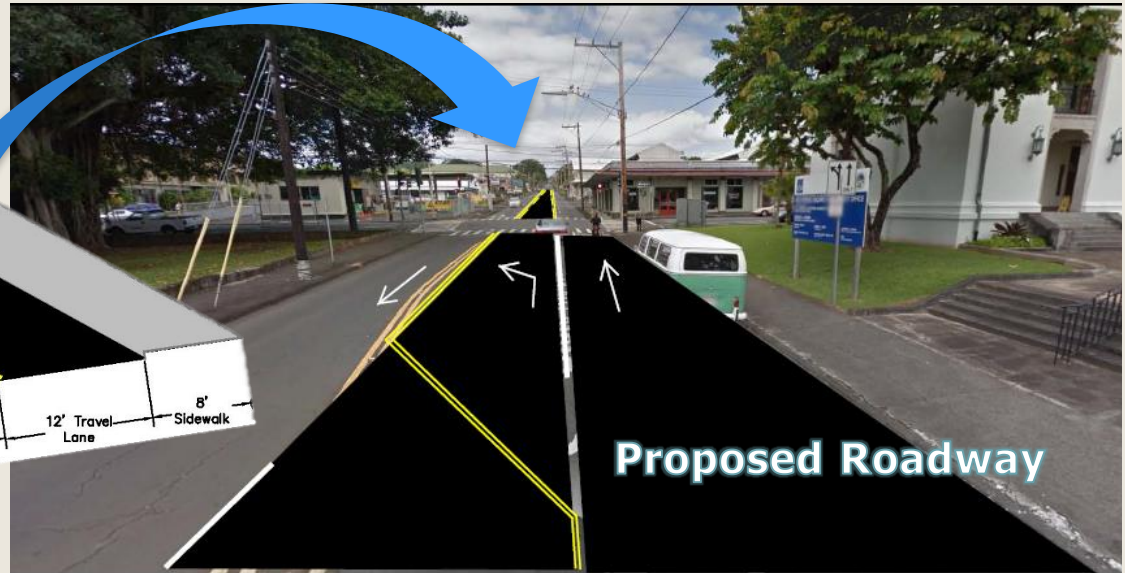
- In-House Design Phase
- Estimated Construction Cost: \$26,000,000
- 80% FHWA funds



# Waiānuenue Avenue Roadway Improvements

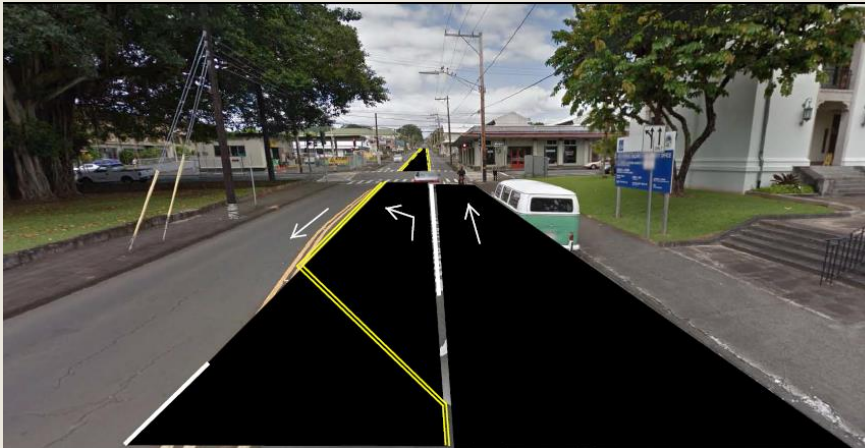
(Roadway Reconstruction of Waiānuenue Ave. from Kamehameha Ave. to Hilo Hospital)

- In-House Design Phase
- Estimated Construction Cost: \$26,000,000
- 80% FHWA funds
- Proposed In-House resurfacing from Kamehameha Ave. to Kapi'olani St. while waiting for STIP/FHWA funds.
  - *Estimated Cost: \$200,000*



# Future Roadway Resurfacing Work To Be Done By Highways Division

Project	Amount
Waiānuenue Avenue Roadway Resurface FY 2017-2018 (Kamehameha Ave. to Kapi‘olani St.)	\$200,000
Kamehameha Avenue Roadway Resurface FY 2017-2018 (Ponahawai St. to Waiānuenue Ave.)	\$260,000

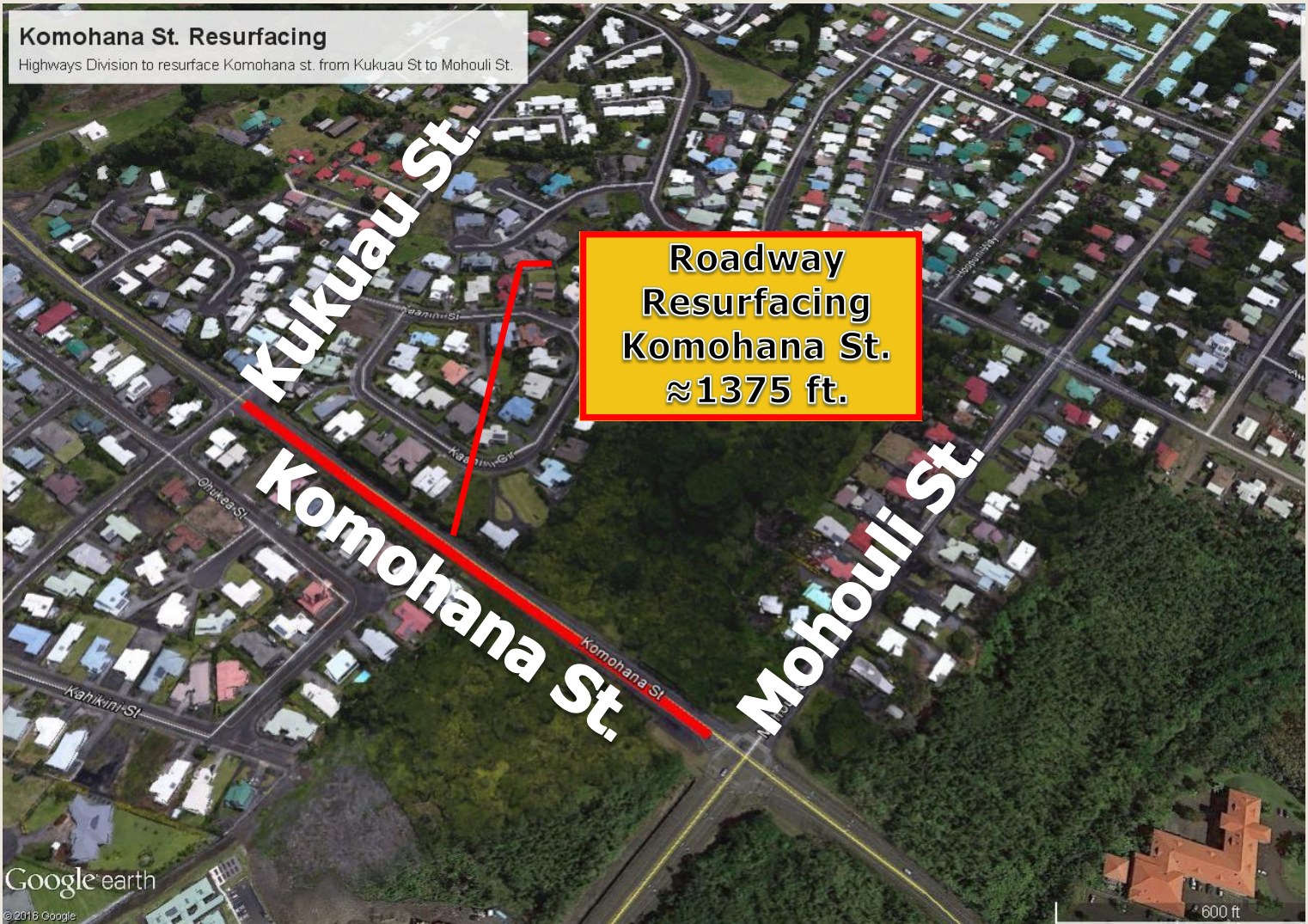


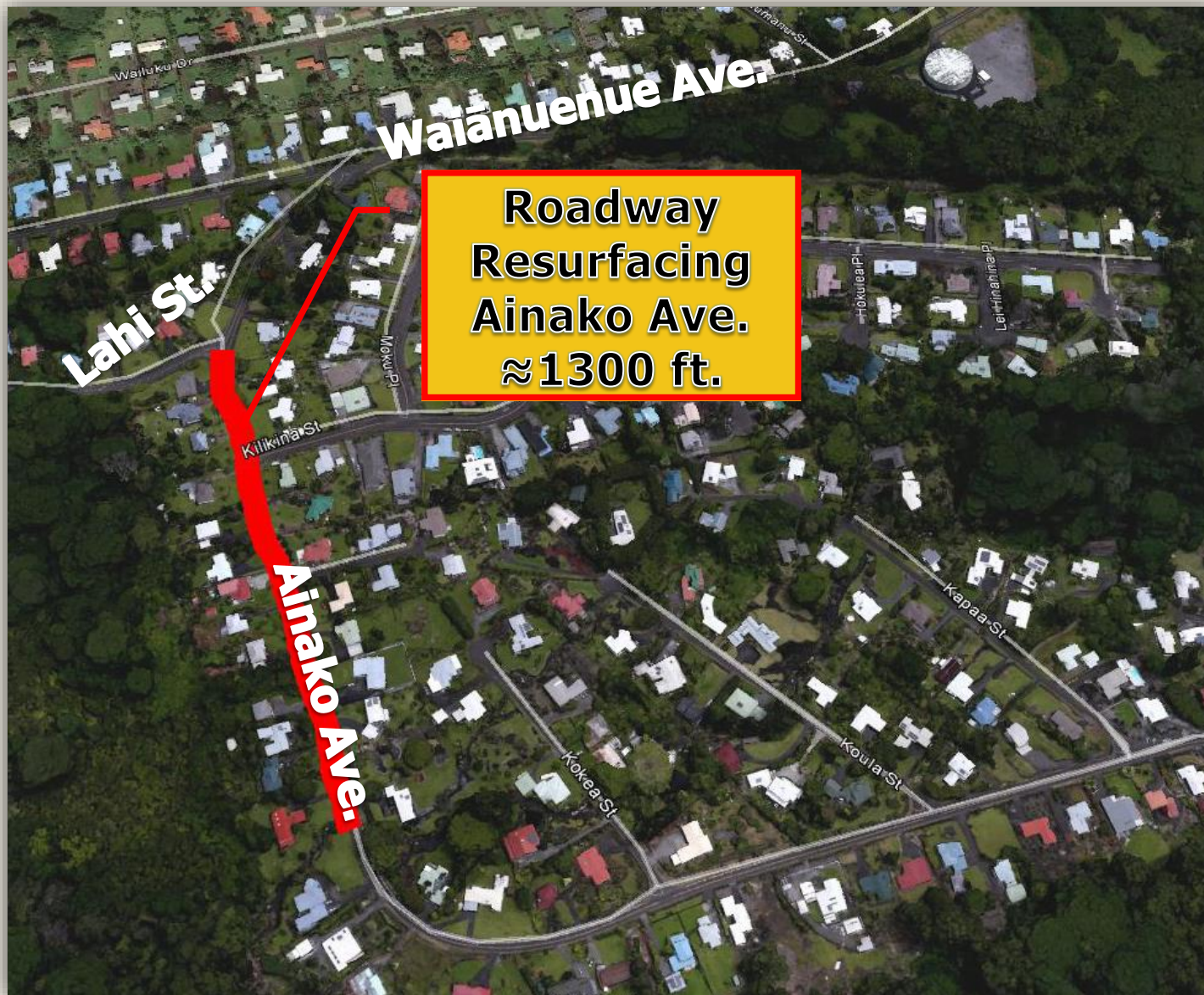
# **Highways Division**

**Roadway Resurfacing and  
Improvements Scheduled  
for FY 2016-2017  
(East Hawai'i)**

# Komohana St. (Kukuau St. to Mohouli St.)

Roadway resurfacing work to be done by Highways Division



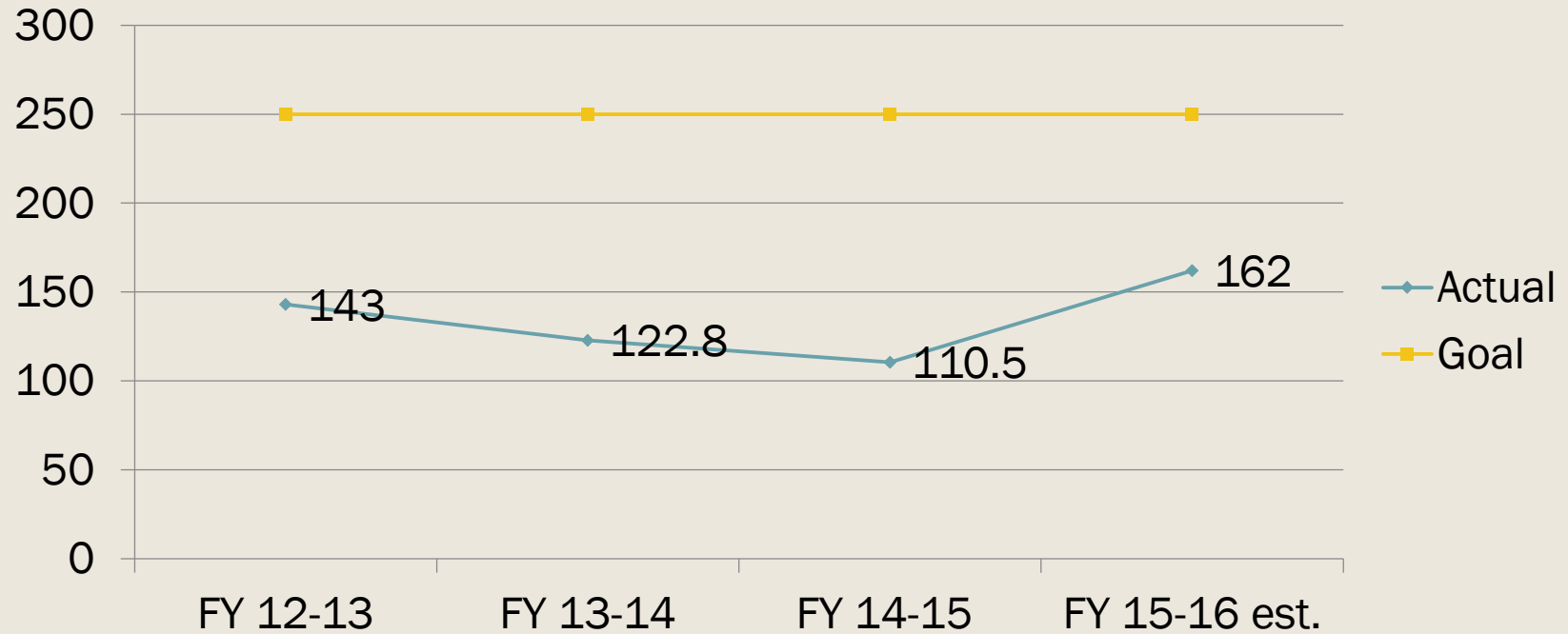






**Roadway  
Resurfacing  
Kekela St.  
≈ 930 ft.**

# Traffic Division Restriping miles



# SPEED HUMP INSTALLATIONS

Fiscal Year	No of speed humps installed
2004-2005	6
2006-2007	6
2007-2008	4
2008-2009	22
2009-2010	79
2010-2011	28
2011-2012	0
2012-2013	42
2013-2014	78*
2014-2015	9
2015-2016	<b>47</b>



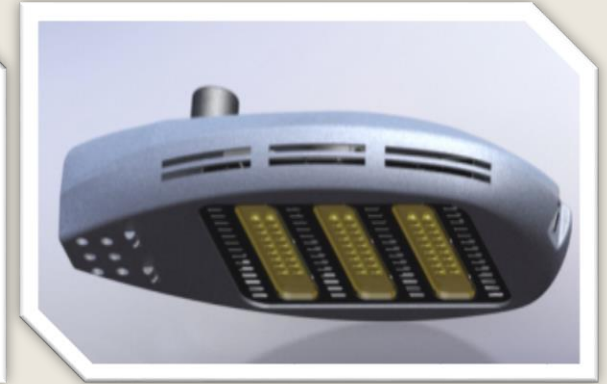
\* Includes Huina Rd., Enos Rd., N. Kulani Rd., Baker Ave., Pua Ave., Todd Ave., Waiea Pl., Haaheo Rd., Uhaloa Rd., Ahuna Rd., Holoholo St., Kakahiaka St., Kuuleialoha Cir., Kololia St., Uluwai St., Kaleiopapa St., Wainaku St., Old Mamalahoa Hwy., Iwalani St., Maunakai St., Mahilani Dr., and Konawaena School Rd.

# LED Streetlight Conversion

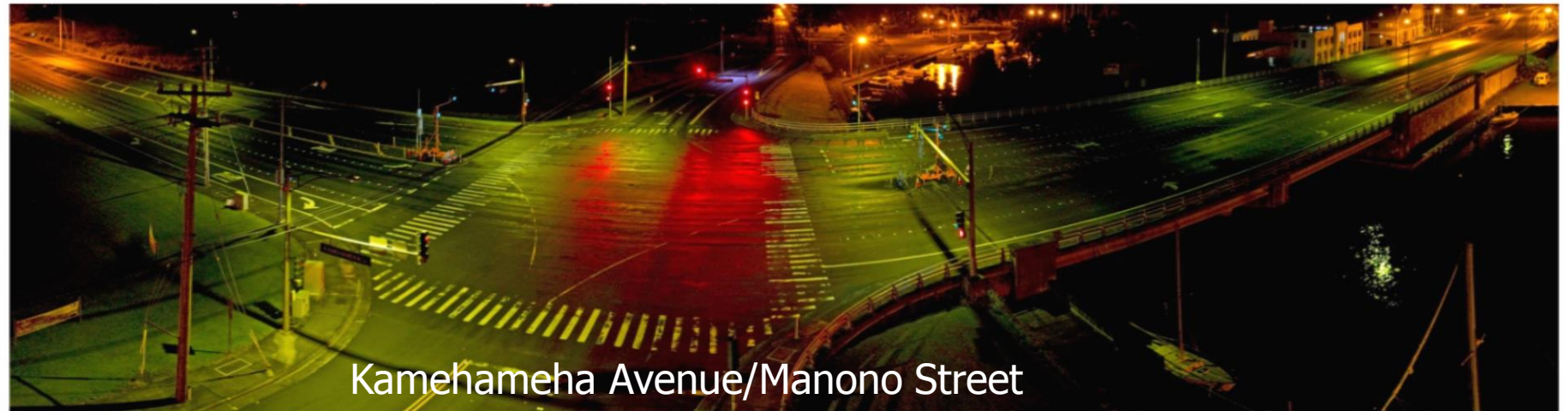
The Traffic Division converted **11,926 LPS** streetlights with **LED** lighting as of **February 3, 2017**. All streetlights on the county ROW has been converted.



Residential



Highway

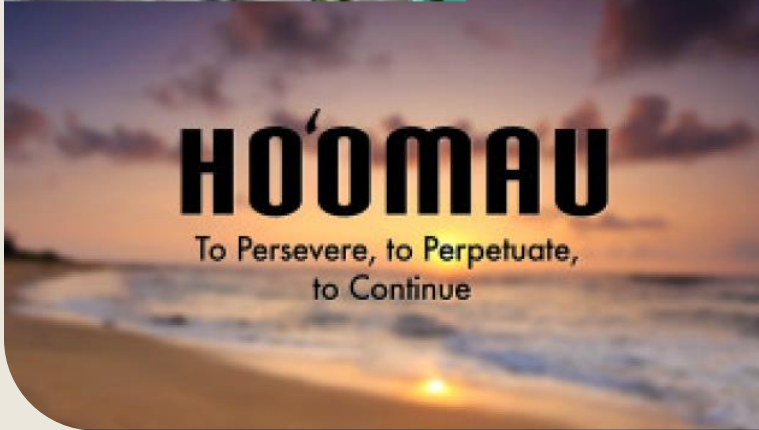
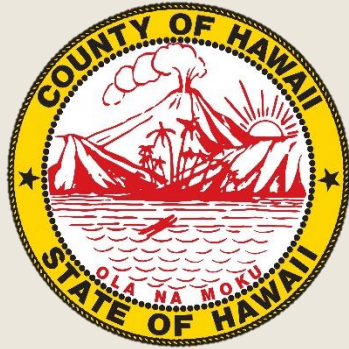


Kamehameha Avenue/Manono Street



**Department of Public Works**  
**ISLAND OF HAWAII**

*Working together as ONE to improve the quality of service for the health and safety of our Big Island Ohana*



# HO'OMAU

To Persevere, to Perpetuate,  
to Continue

