

# Environmental Management Commission Briefing

## **Wastewater Facilities and Cesspool Conversion Plans**

County of Hawaii, Department of Environmental  
Management

October 30, 2024



# Objectives

- Provide an overview of the components of the Wastewater Facilities and the Cesspool Conversion Plans.
- Summarize public outreach efforts completed to date and feedback received.
- Present an update of cesspool conversion planning activities.

---

# Discussion Topics

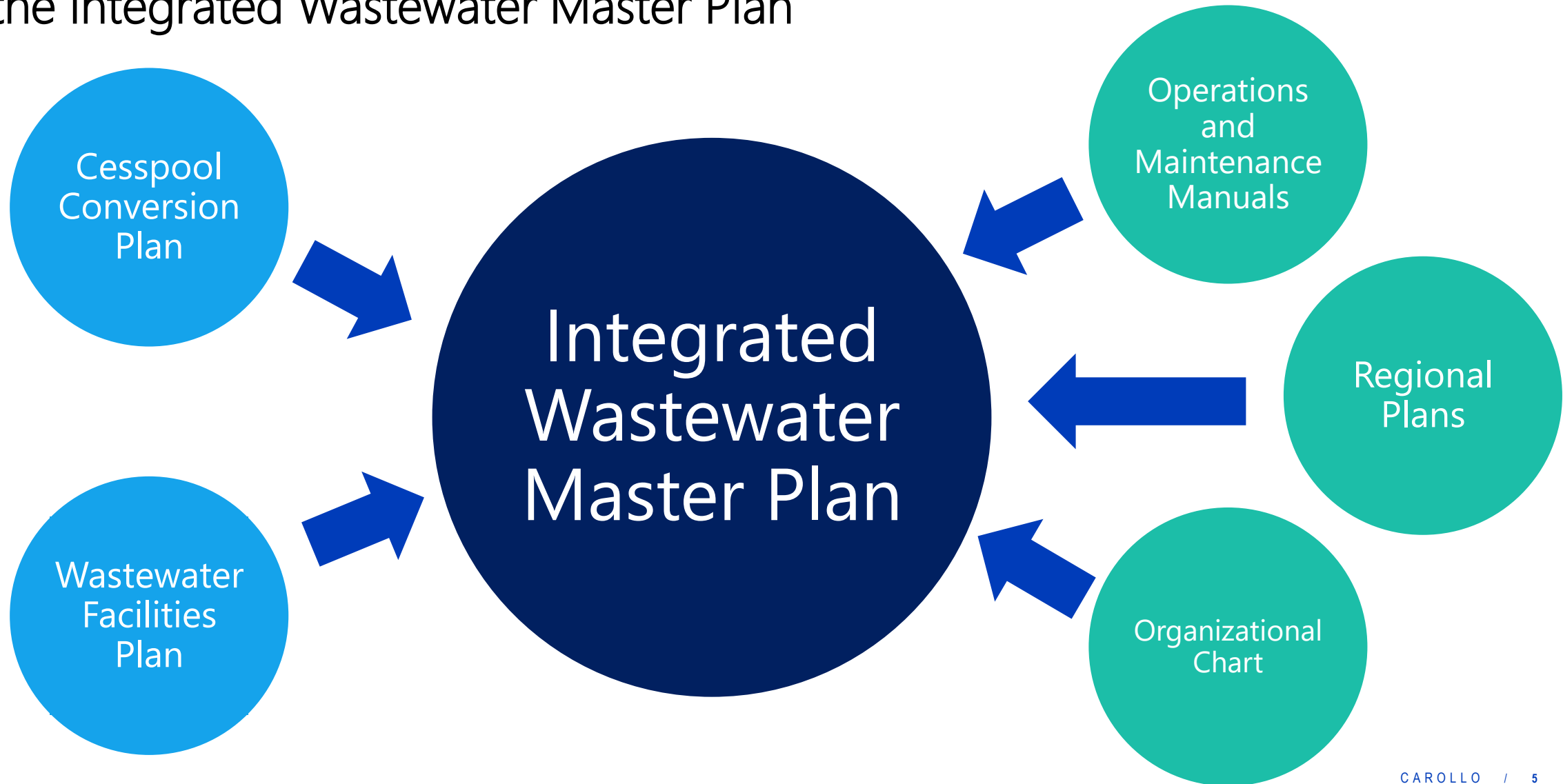
- Wastewater Facilities and Cesspool Conversion Plan Overview
- Public Outreach Completed to Date
- Cesspool Conversion Plan Status Update
  - » Conversion categories
  - » Criteria for draft sewer extension projects
  - » Criteria for potential decentralized projects
  - » Summary of potential cesspool conversions by method
- Anticipated Schedule

1

# Wastewater Facilities and Cesspool Conversion Plan Overview

—

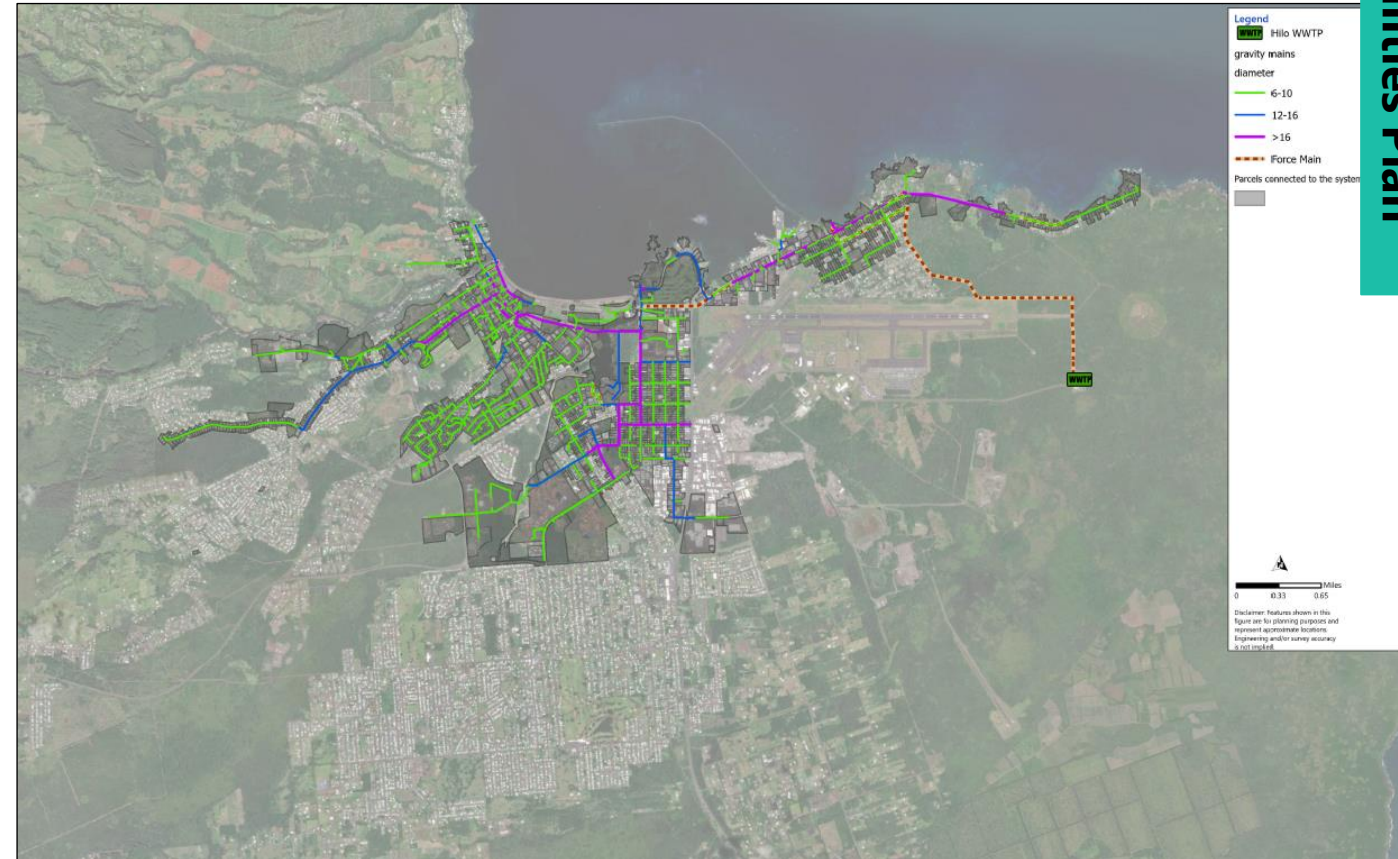
# The Wastewater Facilities and Cesspool Conversion Plans are Key Elements of the Integrated Wastewater Master Plan



# Wastewater Facilities Plan

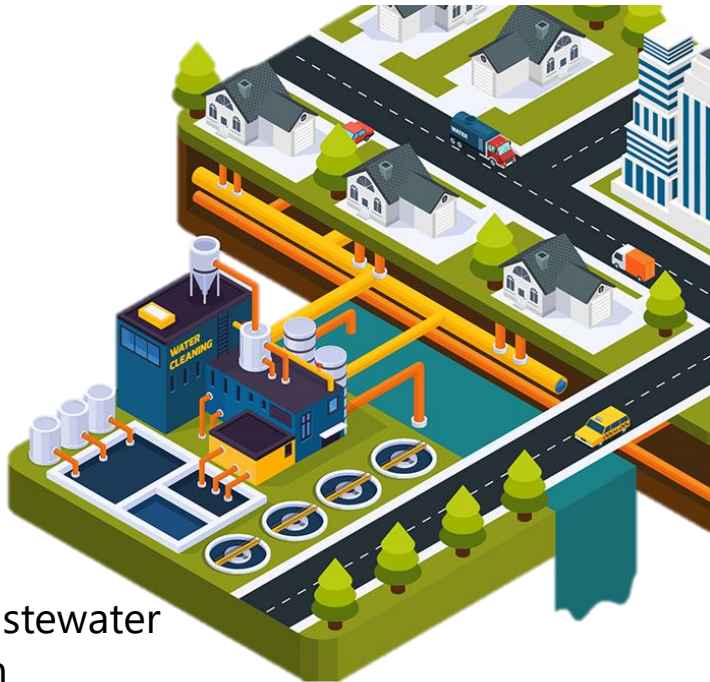
- Incorporates recommendations for extending sewer service areas
- Identification of wastewater treatment plant (WWTP) and sewage pump station (SPS) improvements to address:
  - » Condition deficiencies
  - » Capacity for cesspool conversions
  - » Potential future regulations
- Development of a wastewater capital improvement plan (CIP)
  - » Existing CIP
  - » New capital projects

Existing Hilo Sewer Service Area

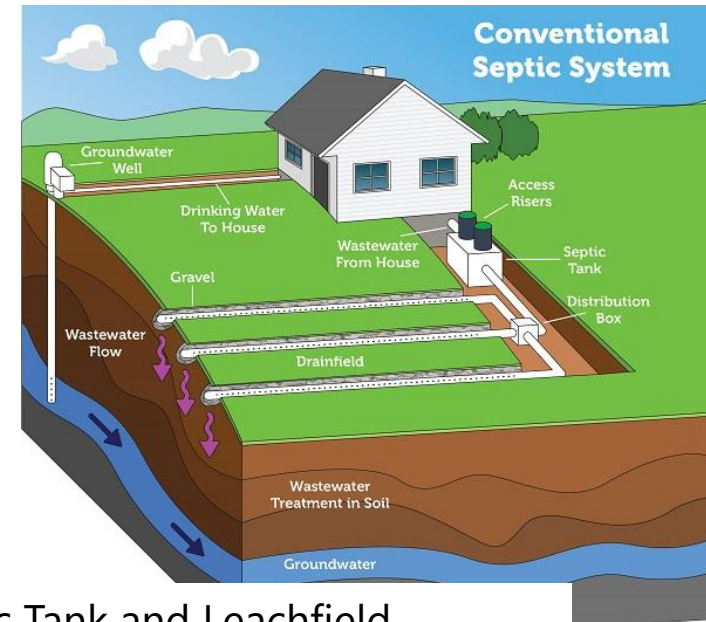


# Cesspool Conversion Plan

- Findings and recommendations for:
  - » Extension of existing County sewer service areas
  - » Potential new decentralized system (with a new “package” WWTP or connection to existing non-County WWTP)
  - » Conversions to upgraded individual wastewater systems (IWS)



Decentralized Wastewater Treatment System



Septic Tank and Leachfield

Please note: Septic systems vary. Diagram is not to scale.

2

Public Outreach Completed to Date

# Attendance and Participation

Date	Region	Location	Sign Ins <sup>1</sup>	Comment Cards <sup>2</sup>	Survey Responses <sup>3</sup>
2/13/2024	West	Old Kona Airport Pavilion	56	9	19
2/15/2024	East	Aunty Sally Kaleohano's Lu'au Hale	100	11	43
2/27/2024	South	Naalehu Community Center	8	1	1
2/28/2024	North	Kohala Intergenerational Center	24	7	13

## Notes:

<sup>1</sup> Some groups of 2 or more signed in under one name.

<sup>2</sup> For general comments.

<sup>3</sup> In response to following questions:

- Which community do you live in?
- What are your top 3 concerns about cesspool conversions?
- Is there anything else you would like to learn regarding cesspool conversions?



## Common Questions/Comments

- Costs
  - Concern about the **costs of cesspool conversions** and requests for funding support
  - Concern for the **risk of paying twice**: present conversion to upgraded IWS and future sewer connection



## Common Questions/Comments (cont'd)

- IWS
  - Requests for **more information** on **conversion technologies**
  - Concern that the **effluent quality from septic tanks is not significantly improved over cesspools**
  - Concerns about **site constraints** (e.g., space) and restoration for onsite conversions
  - Concern about adequacy of **workforce availability**
  - General requests for homeowner resources (e.g., **where to find contractors, engineers, how to maintain IWSs**)
  - Questions on regulations related to composting toilets and gray water for **residential reuse**



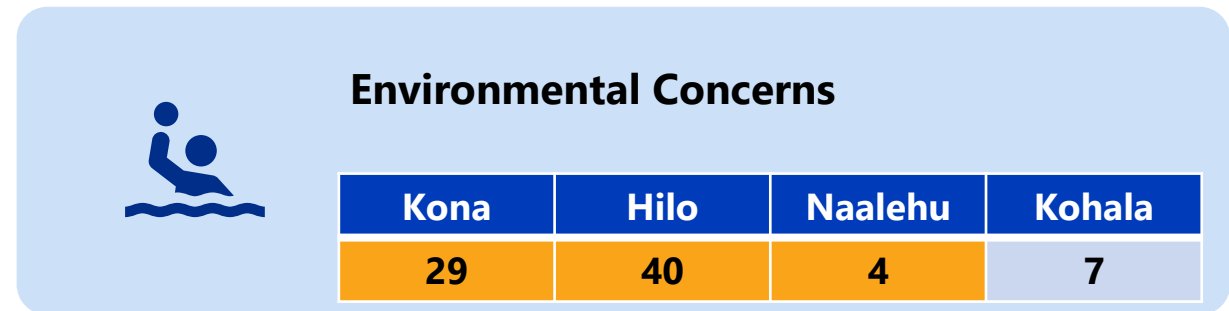
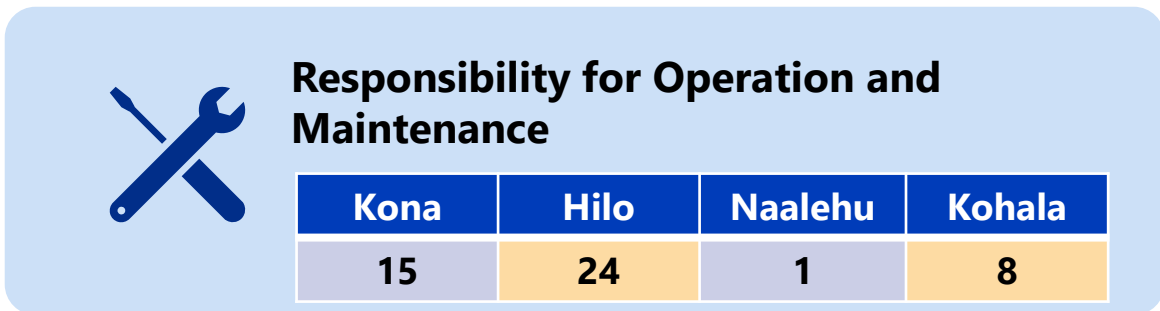
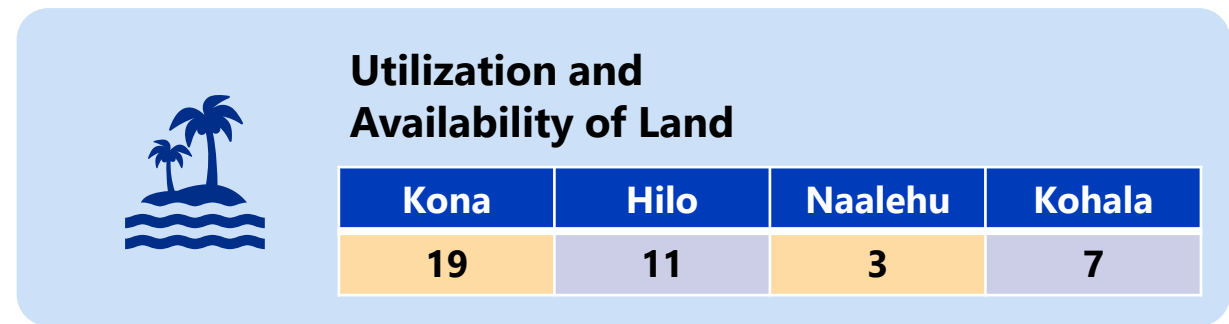
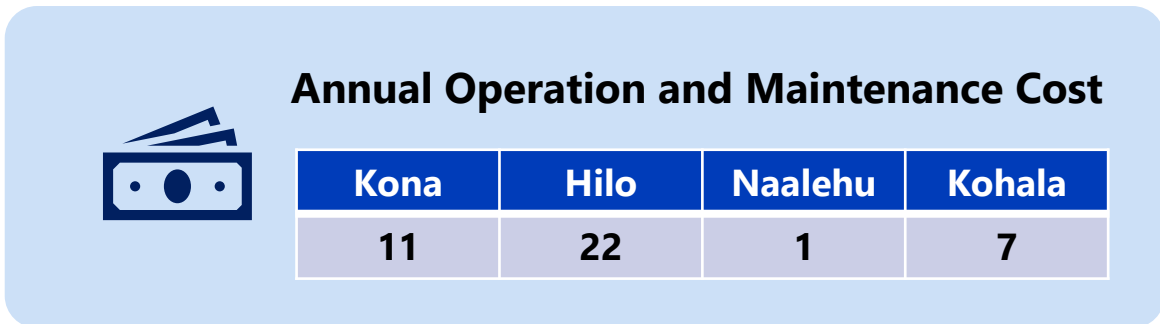
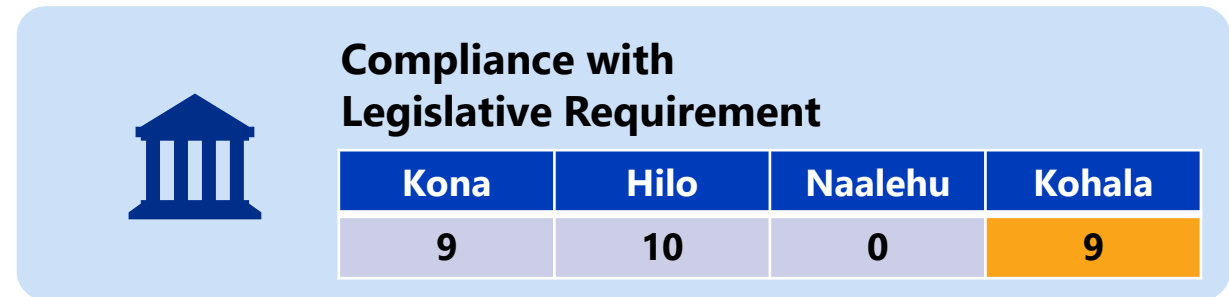
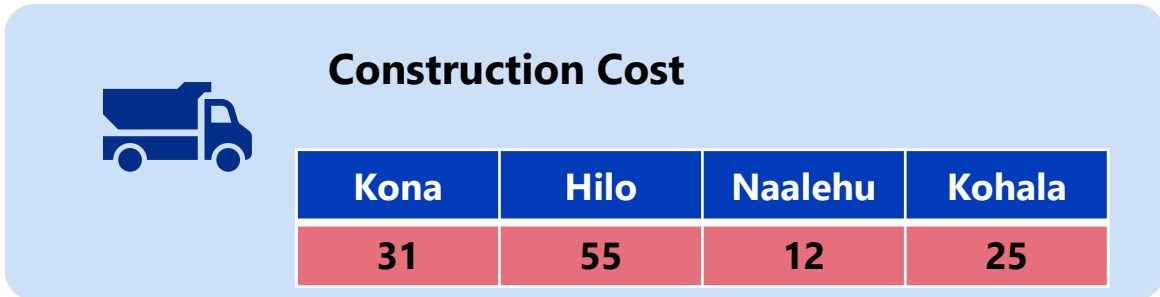
## Common Questions/Comments (cont'd)

- Centralized/decentralized options
  - Questions if there are **recycled water opportunities**
  - Questions on the possibility of **connecting to decentralized/non-County WWTPs**
  - Questions on the County's **timeframe and plans for sewerage**
  - Provide more **public information and education** on the improved water quality



# Tally: Which aspects of cesspool conversion are most important to you and your community?

- Boxes were used to represent each aspect of cesspool conversion
- Participants were given three tickets to vote by placing a ticket in their preferred boxes.

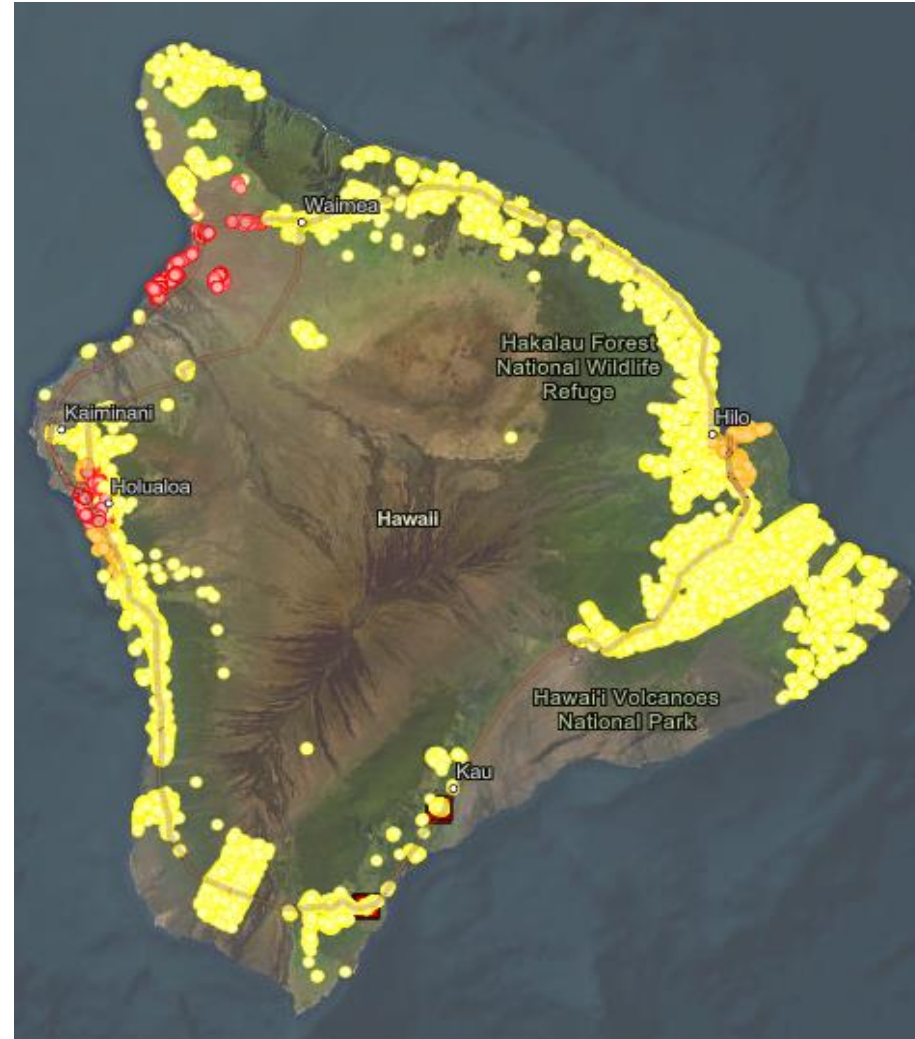


2

## Cesspool Conversion Plan Status Update

—

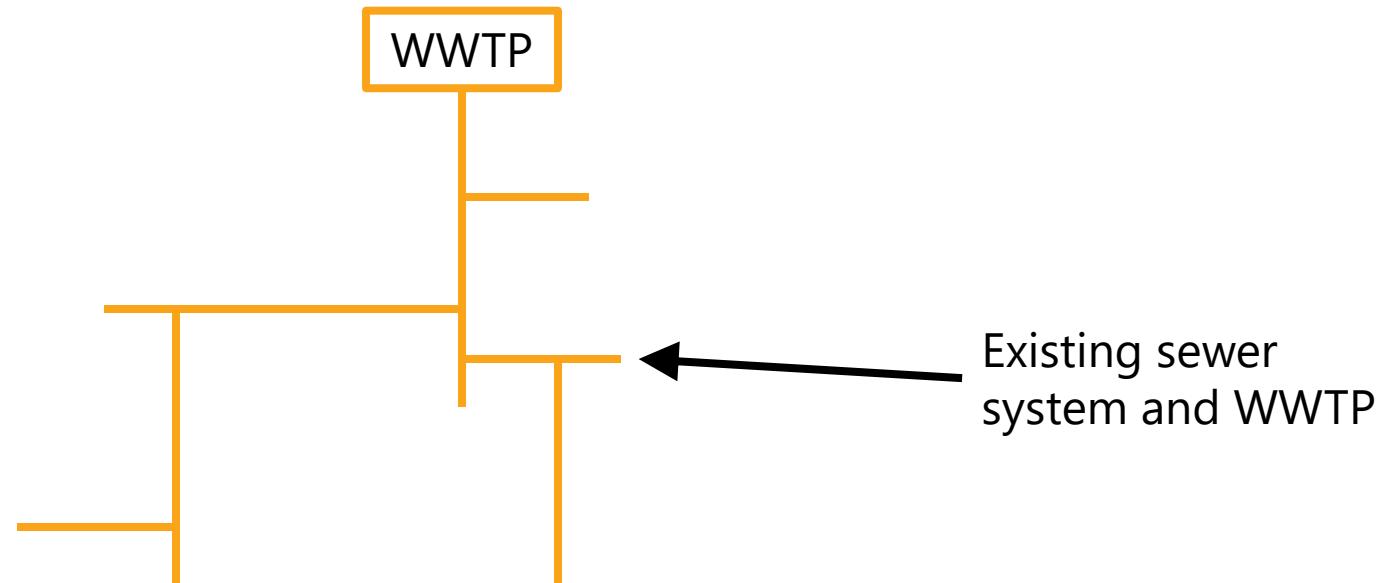
# The Cesspool Conversion Plan will Identify Potential Methods for Conversion for the County's ~48,600 Cesspools



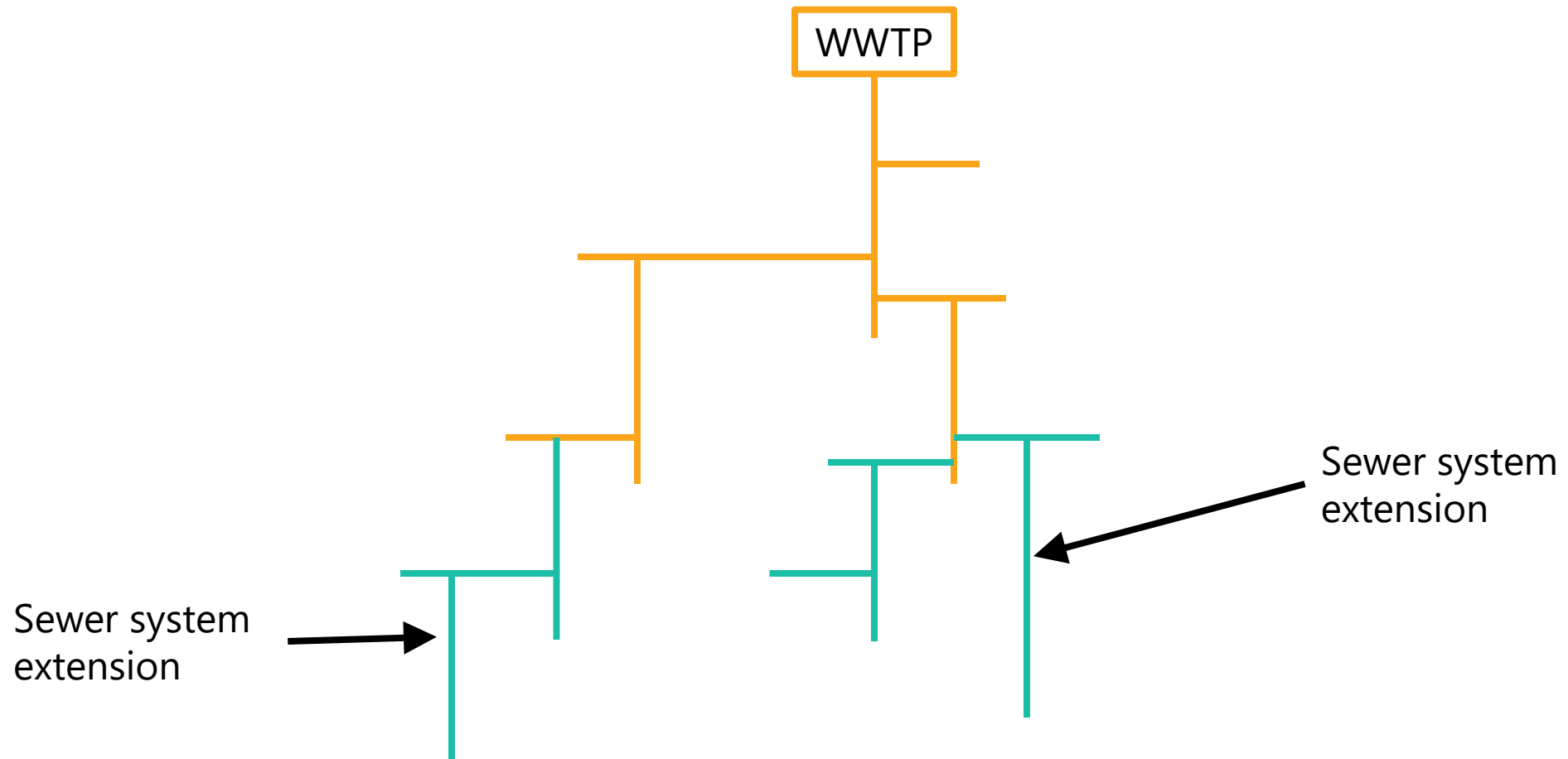
# Cesspool Conversion Categories for Existing Service Areas

- Sphere 1
  - » Within the initial sewer extension service area boundary.
  - » Must connect to the sewer system and treatment plant.
  - » Increased flows are within existing collection system and treatment plant capacities.
- Sphere 2
  - » Outside the initial sewer extension service area boundary.
  - » May connect to the sewer system and treatment plant but may require system expansion.
  - » Decentralized sewer system potential.
  - » IWS potential.
- Sphere 3
  - » Outside the initial extension sewer service area boundary.
  - » IWS is the primary potential conversion method.

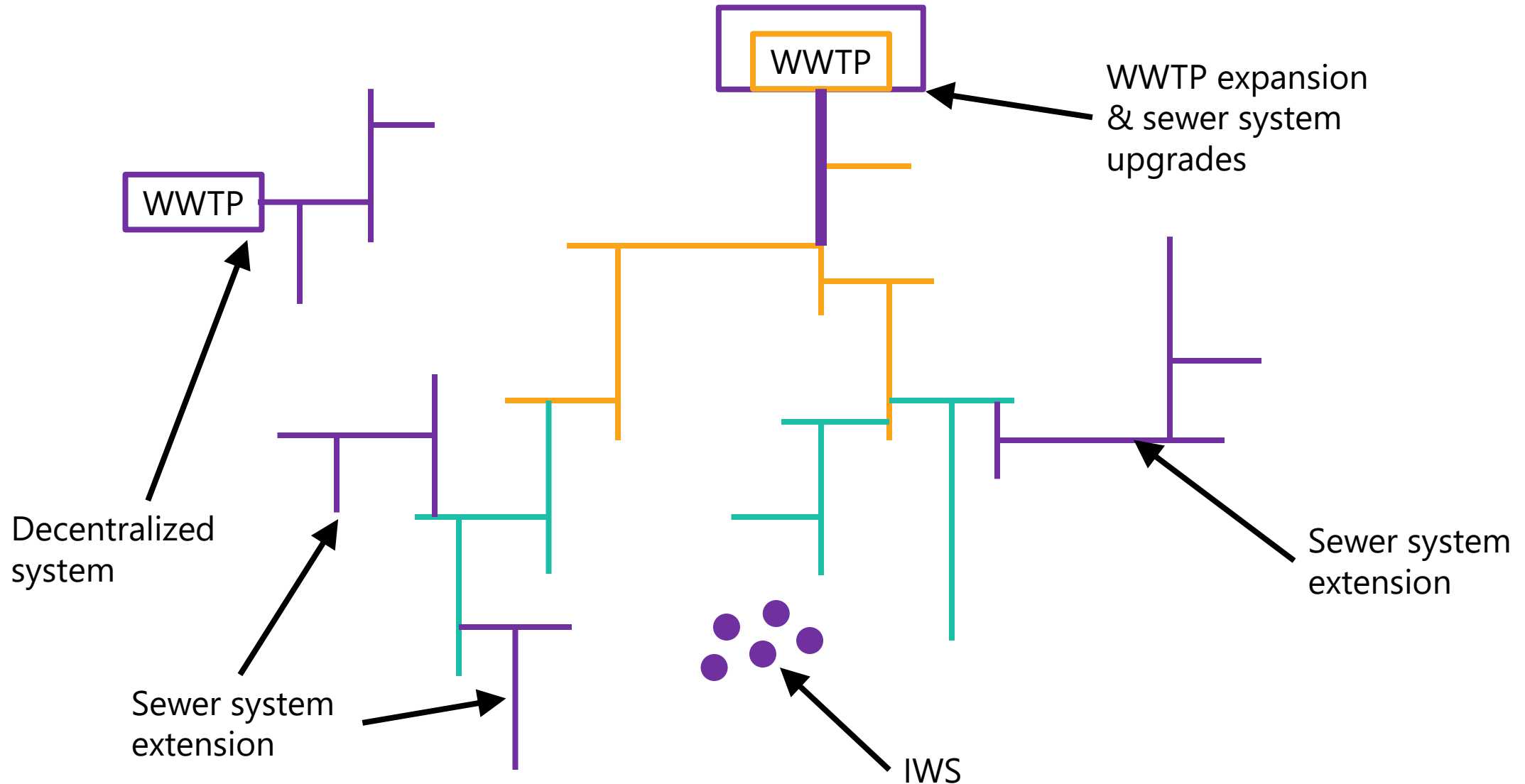
# Conceptual Cesspool Conversion Categories – Existing



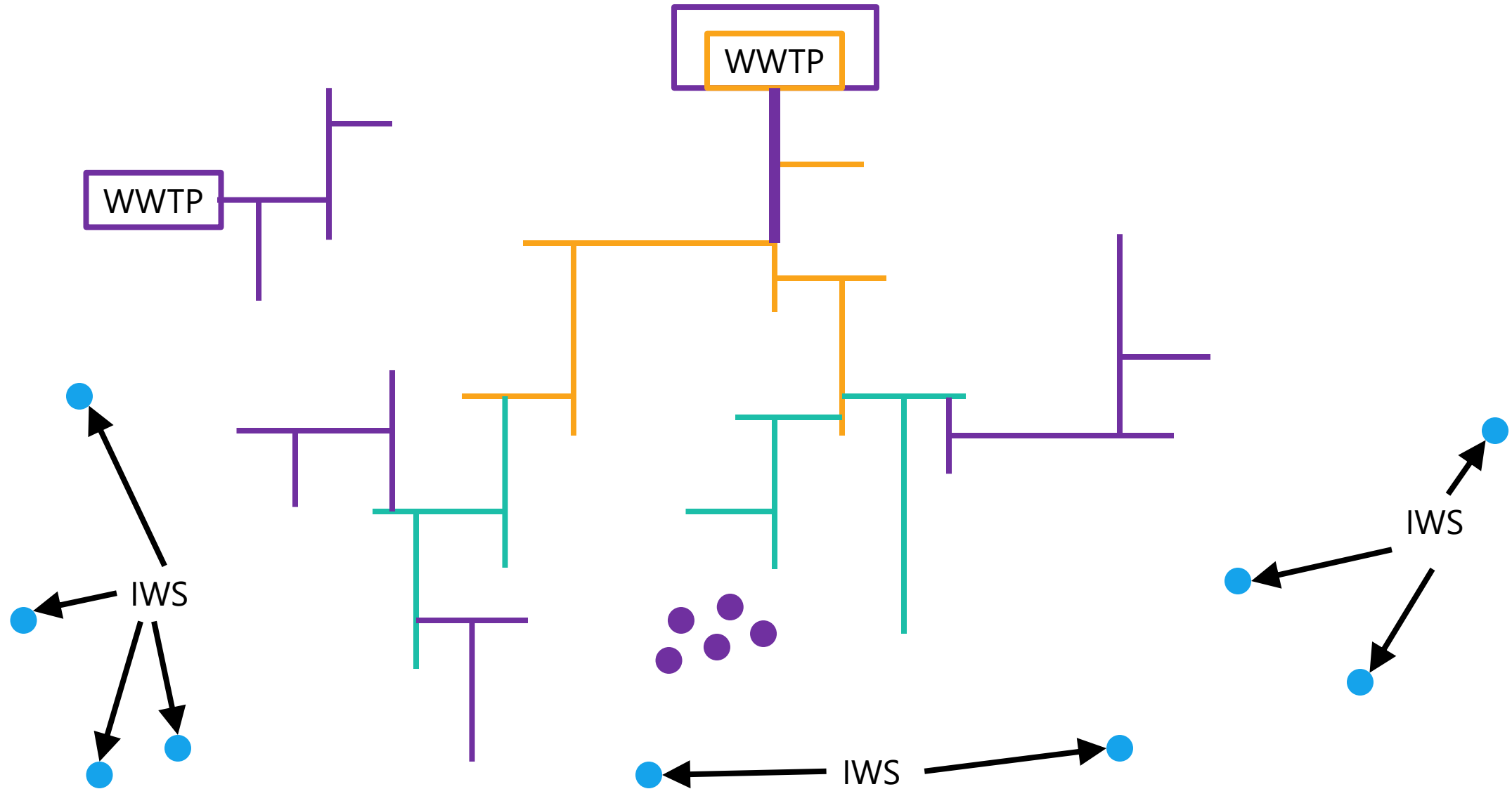
# Conceptual Cesspool Conversion Categories – Sphere 1



# Conceptual Cesspool Conversion Categories – Sphere 2



# Conceptual Cesspool Conversion Categories – Sphere 3








# Criteria for Selection of Potential Sphere 1 Sewer Conversion Priority Areas/Projects

- Selection Criteria
  - » Prior EPA grant commitments (Hilo service area)
  - » Lot size
  - » Proximity to an existing sewer
  - » Available WWTP capacity
  - » Department of Health (DOH) cesspool priority
  - » Cesspool density
  - » Logical neighborhood boundaries and contiguous areas
  - » Affordable housing
  - » DHHL and federal entities
  - » Commercial and Industrial entities high pollutants and under the pretreatment AOC
  - » Residential homes and small businesses

# Hilo Example - Existing







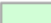
**Legend**

-  WWTP
-  Lift Stations
-  Existing Gravity Main
-  Existing Force Main
-  New Hilo Service Area

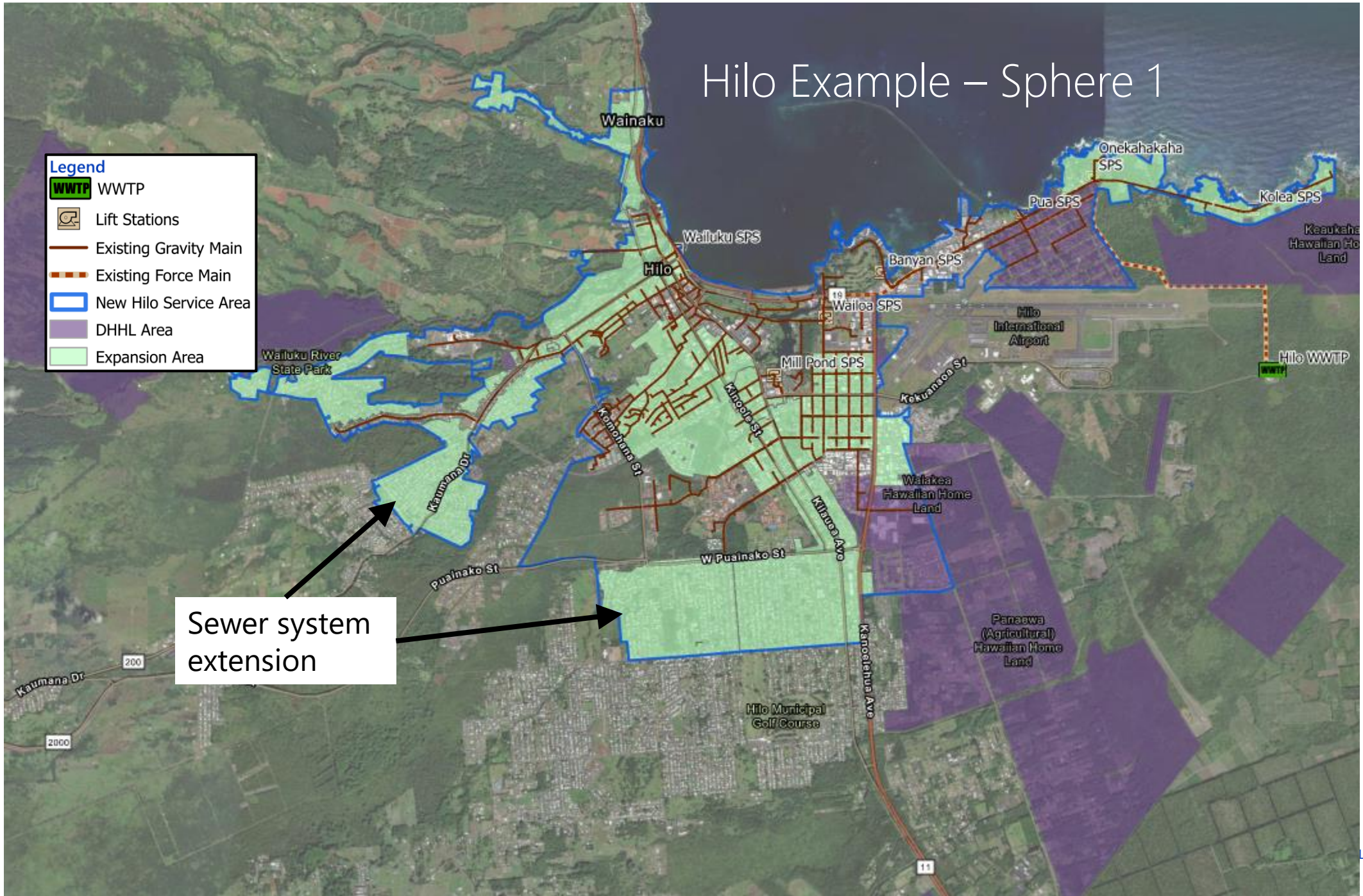


# Hilo Example – Sphere 1

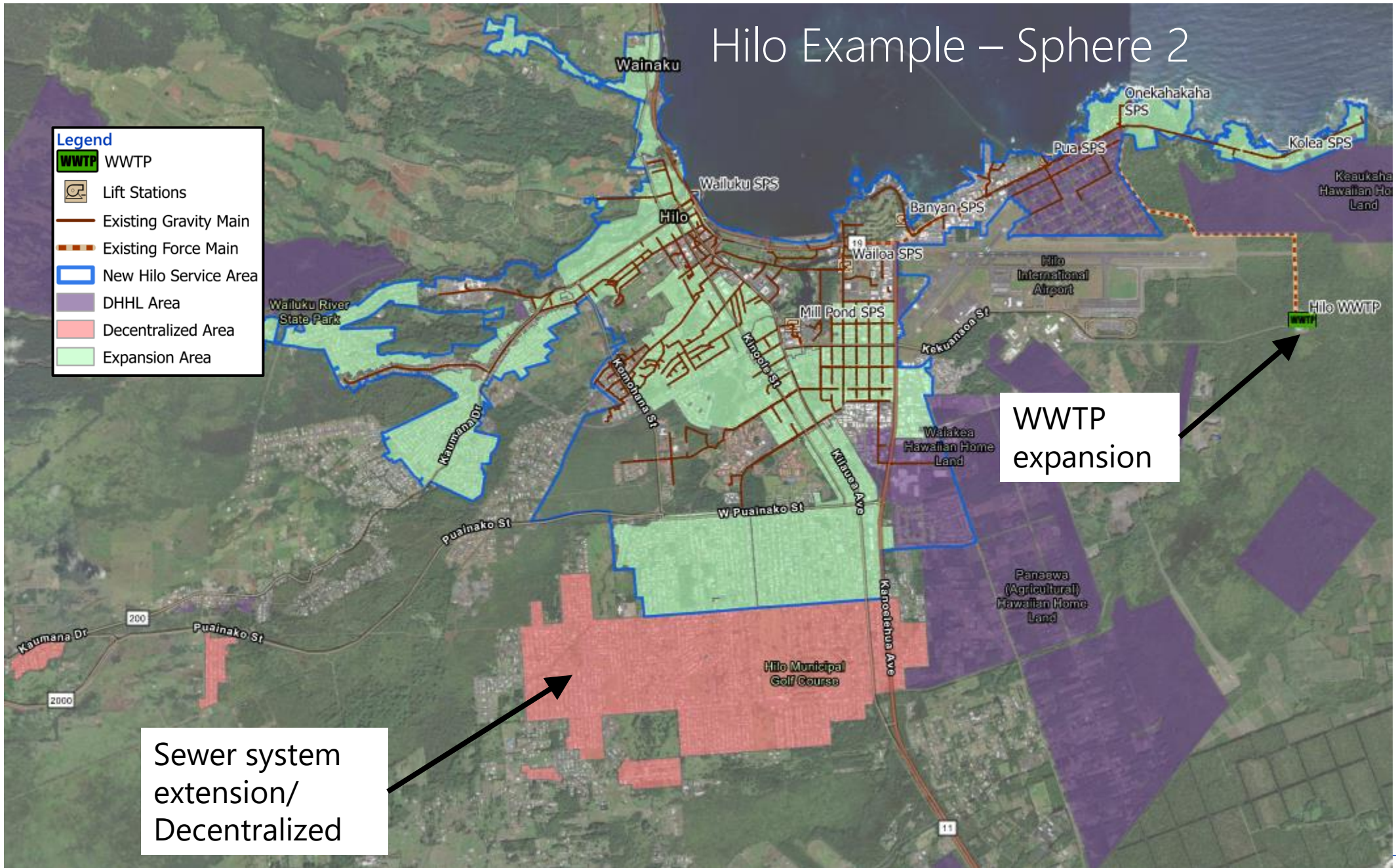
**Legend**

-  WWTP
-  Lift Stations
-  Existing Gravity Main
-  Existing Force Main
-  New Hilo Service Area
-  DHHL Area
-  Expansion Area

Sewer system extension



# Hilo Example – Sphere 2



Sewer system extension/  
Decentralized

WWTP  
expansion



# Draft Sphere 1 Sewer Extension Project Summary

Service Area	No. of Projects	No. of Cesspools
Hilo	14	4,320
Kealakehe	10	3,343
Honokaa	5	326
Papaikou	5	235
Kulaimano	3	31
Kapehu	0	0
Pahala	1	300
Naalehu	1	94
<b>Total</b>	<b>39</b>	<b>8,649</b>

# Criteria for Selection of Potential New Decentralized Systems

- Identified areas with 50 cesspools within a 1/8 mile radius
  - » 66 areas, 17,390 cesspools
- Removed areas within proposed extension of existing service area boundaries
- Reviewed each potential area; grouped if within 2 miles
  - » Cost of package WWTP vs. 2 miles of pipe
- Added the Puako community
- Resulted in 26 potential decentralized opportunities



# Potential Decentralized Project Opportunities

Location	No. of Cesspools
Puna	123
Puna	230
Puna	88
Puna	190
Hilo	3,079
Hilo	156
Hilo	92
Honomu	135
Laupahoehoe	86
Paauilo	136
Honokaa/Paauhau	126
Honokaa	335
Hawi	181
Hawi	180

Location	No. of Cesspools
Waimea	822
Waimea	445
Waikoloa Village	371
Kealekehe	1,609
South of Kealekehe/Honalo	273
South of Kealekehe/Kealakekua	56
South of Kealekehe/Captain Cook	191
South Captain Cook/Pebbles Beach	127
Ninole Cove	76
Puako	196
Hawi	281
Hawi	196
<b>TOTAL</b>	<b>9,723</b>

# Preliminary Summary of Potential Cesspool Conversions by Method

<b>Cesspool Conversion Method</b>	<b>No. of Projects</b>	<b>No. of Cesspools</b>	<b>Percent of Total</b>
<b>County-Led Sewer Extension to Existing County WWTP</b>	<b>39</b>	<b>8,649</b>	<b>17.8%</b>
<b>Potential Community-Led New Decentralized System/Extension to Existing Non-County WWTP</b>	<b>26</b>	<b>9,723</b>	<b>20.0%</b>
<b>Property Owner-Led IWS</b>		<b>30,224</b>	<b>62.2%</b>
<b>Total</b>		<b>48,596</b>	<b>100%</b>

3

## Anticipated Schedule

---

## Anticipated Schedule (pending County Management confirmation)

- Draft Cesspool Conversion Plan – Q2, 2025
- Draft Facilities Plan – Q3, 2025
- Draft Integrated Wastewater Management Plan – Q3, 2025

Mahalo! 🙌